

December 12, 2014

Announcements

Melinda Irwin Appointed Associate Director for Population Sciences

I am pleased to announce that Melinda Irwin, PhD, MPH has been appointed to succeed Susan Mayne as Associate Director for Population Sciences for Yale Cancer Center. Melinda has been a wonderful contributor to Yale Cancer Center's leadership team in her role as Co-Leader of the Cancer Prevention and Control Program with Yong Zhu, PhD, and will continue to serve in that leadership position while taking on the additional responsibility on our mini-cab team.

Melinda has built a national reputation for her expertise on exercise and diet and its impact on cancer and recurrence. Her most recent publications, linking moderate exercise to reduce recurrence rates in breast cancer survivors; quality of diet and mortality in ovarian cancer survivors; and just last week, the results of a trial showing that exercise led to improvement in AI-induced arthralgia in previously inactive breast cancer survivors, will change the way we counsel our patients and cancer survivors and continue to place significant importance on exercise and diet in our lifestyles.

Please join me in congratulating Melinda in her new role at Yale Cancer Center.

Pharmacy Services Receives National Recognition

I am truly proud to announce that the Pharmacy Services team at Smilow Cancer Hospital is the National Recipient of the Award for Excellence in Medication-Use Safety from the American Society of Health-System Pharmacists. This is the highest recognition that the organization awards, and a true reflection of the outstanding leadership of Lori Lee, Executive Director of Corporate Pharmacy Services for YNHH, and the

from the desk of

Thomas J. Lynch, Jr., MD

Director, Yale Cancer Center

Physician-in-Chief Smilow Cancer

Hospital at Yale-New Haven



Recent News

Read recent articles featuring experts from Yale Cancer Center [News Center >>](#)

LATEST ARTICLES:



Immune Checkpoint Treatment Takes Down Cancer

[Read More >>](#)

dedication to safety that all of our pharmacy staff has. The pharmacy team at Smilow and throughout our 8 Care Centers submitted a project highlighting their innovative strategies to improve medication safety for our patients. Through improved technologies, they have implemented remote supervision of technicians and the use of a telepharmacy model, which is now allowed in CT because of their efforts to change the Drugs Laws in our state.

Congratulations to the entire Oncology Pharmacy team on this prestigious and well deserved honor!

[Learn More >>](#)

Hematology Program Presents at ASH

Congratulations to the members of the Hematology Program who presented their work at the American Society of Hematology annual meeting this past week in San Francisco. Congratulations to Shiny Nair and Roger Kim who both received abstract achievement awards from ASH for their abstract presentations.

Scientific Workshops

Single Cell Deep Seq Data of Human Hematopoietic Progenitors and Their Differentiated Progeny
Diane Krause, MD, PhD

Scientific Programs

The Myeloma Niche and the Immunobiology of Myeloma
Madhav V. Dhodapkar, MD

Oral Abstracts

Thalassemia and Globin Gene Regulation: Novel therapeutic strategies for Thalassemia - HbF reactivation and beyond
Heather L Edward, BA, Tasha Morrison, MPH, BA, Jacqueline N Milton, MS, Hong-yuan Luo, MB, PhD, Lance Davis, MD, Bernard G Forget, MD, Martin H. Steinberg, MD and David H.K. Chui, MD

Platelet Activation and Biochemistry: Platelets in Hemostasis and Thrombosis

Diane Krause, MD, PhD, Stephanie Halene, MD, Carmen Jane Booth, DVM, PhD, Huiyan Jin, Siying Zou, Alexandra M Teixeira and Ping-Xia Zhang, MD

Platelet Activation and Biochemistry: Platelet and Megakaryocyte Biology

Siying Zou, Alexandra M Teixeira, Chad D Sanada, PhD, Ping-xia Zhang, MD and Diane Krause, MD, PhD

Bone Marrow Failure: Molecular Mechanisms II

Linette Bosques¹, Caroline Tang, MD², Diane Krause, MD, PhD, Sherman M. Weissman, MD, Patrick G Gallagher, MD, Mitchell J. Weiss, MD, PhD, Hannah Tamary, MD and Gary M. Kupfer, MD



Cancer's Super-Survivors: How Immunotherapy is Transforming Oncology

[Read More >>](#)



'Addiction' For a Perma-tan May be Genetic

[Read More >>](#)




With New Delivery Method, Safer Cancer Treatments to Come

[Read More >>](#)

Follow Yale Cancer Center on Twitter

Follow us on [twitter](#)

LATEST TWEETS:

 New drug combination for advanced breast cancer delays progression
<http://bit.ly/1ByXsx7> Dr. Kerin

Basic Science and Clinical Practice in Blood Transfusion:

Infection, Inflammation, and Immunity in Transfusion Medicine

Seema R Patel, PhD, Connie M Arthur, PhD, Lilian Rodrigues, Carol Xue, James C. Zimring, MD, PhD, Jeanne E Hendrickson, MD and Sean R. Stowell, MD, PhD

Red Cells and Erythropoiesis, Structure and Function, Metabolism, and Survival, Excluding Iron: Pathogenic Mechanisms Affecting Red Cells & Erythropoiesis

Mary A Risinger, PhD, Edyta Glogowska, PhD, Amber Hogart Begtrup, PhD, Neha Dagaonkar, Satheesh Chonat, MD, Clinton H Joiner, MD, PhD, Charles T. Quinn, MD, Theodosia A. Kalfa, MD, PhD and Patrick G Gallagher, MD

Lymphocytes, Lymphocyte Activation and Immunodeficiency, including HIV and Other Infections: NK cell and T cell Biology

Shiny Nair, PhD, Chandra Sekhar Boddupalli, PhD, Rakesh Verma, PhD, Jun Liu, Yang Ruhua, Gregory M Pastores, MD, Pramod Mistry, MD, PhD, FRCP and Madhav V. Dhodapkar, MD

Lymphoma: Therapy with Biologic Agents, excluding Pre-Clinical Models: Indolent B-cell NHL and T-cell NHL

Steven M. Horwitz, MD, Pierluigi Porcu, MD, Ian Flinn, Brad S. Kahl, MD, Jennifer Sweeney, Howard M. Stern, MD, PhD, Mark Douglas, MS, Kerstin Allen, MA, Patrick Kelly, MD and Francine M. Foss, MD

Poster Abstracts

Health Services and Outcomes Research - Malignant Diseases: Poster I

Roger Y. Kim, BS, Xiaopan Yao, PhD, Peter Longley, RN, DNP, Joan Rimar, DNSc, RN, Chryssanthi Kournioti, MD and Alfred Ian Lee, MD, PhD

Basic Science & Clinical Practice in Blood Transfusion: Poster I

Connie M Arthur, PhD, Amanda Mener, Seema Patel, PhD, Lilian Cataldi Rodrigues, PhD, Carol Xue, Robert Sheppard Nickel, MD, James C. Zimring, MD, PhD, Jeanne E Hendrickson, MD and Sean R. Stowell, MD, PhD

Myelodysplastic Syndromes - Clinical Studies: Poster I

Amer M. Zeidan, MBBS, MHS, Mikkael A. Sekeres, MD, MS, Guillermo Garcia-Manero, MD, John Barnard, Najla H Al Ali, Cassie Zimmerman, MA, Gail J. Roboz, MD, David P. Steensma, MD, Amy E. DeZern, MD, MHS, Elias Jabbour, MD, Hagop M. Kantarjian, MD, Katrina Zell, Quiqing Wang, Steven D Gore, Aziz Nazha, MD, Jaroslaw P. Maciejewski, MD, PhD, Alan F. List, MD and Rami S Komrokji, MD

Myeloproliferative Syndromes: Basic Science: Poster I

Alexandre P.A. Theocharides, MD, Rouven Müller, MD, Yasuyuki Saito, MD, PhD, Richard A. Flavell, PhD and Markus G. Manz, MD

Adelson to deliver results
#SABCS14

YaleNews | E-cigs catching on in Connecticut schools, new study shows @Yale

The role of immune intervention in cancer treatment is no longer deniable: Mario Sznol in @NEJM
<http://bit.ly/1vKLSFq> @YaleMed @Yale @YNHH

Cancer Drugs That Free Brake on Immune System Show Promise for Hodgkin's
<http://nyti.ms/1zao2Kr>

#Immunotherapy is appealing and complicated:
@DrRoyHerbstYale in today's @WSJ article by @ronwinslow
<http://on.wsj.com/15SL7qw>
@YaleMed @YNHH

Join Yale Cancer Center on Facebook

Like us on Facebook 

LATEST POSTS:

A new drug combination for advanced breast cancer has been shown to delay disease progression in a study presented at the San Antonio Breast Cancer Symposium by Yale Cancer Center's Dr. Kerin Adelson.

The study found that the combination of the drugs bortezomib and fulvestrant - versus fulvestrant alone - doubled the rate of survival at 12 months and reduced the chance of cancer progression overall.

Myeloma: Biology and Pathophysiology, excluding Therapy: Poster I

Rashid Z Khan, MD, Christoph Heuck, MD, Adam Rosenthal, Caleb K Stein, MS, Joshua Epstein, DSc, Shmuel Yaccoby, PhD, Xenofon Papanikolaou, MD, Yogesh Jethava, MB, MRCP, MD, FRCPath, Maurizio Zangari, MD, Frits Van Rhee, Madhav V. Dhodapkar, MD, Gareth J Morgan, MD, PhD, Antje Hoering, PhD, John Crowley, PhD and Bart Barlogie, MD, PhD

Hematopoietic Stem and Progenitor Biology: Poster II

Chad D Sanada, PhD, Elizabeth Min, BS, Siying Zou, Huiyan Jin, Ping-Xia Zhang, PhD, Bruce J Aronow, PhD and Diane S Krause, MD, PhD

Thalassemia and Globin Gene Regulation: Poster II

Zhihua Jiang, PhD, Shengwen Huang, MD, PhD, Hong Yuan Luo, MB, PhD, Nejat Akar, MD, A.Nazli Basak, MD, Nasir Al-Allawi, MD, PhD, Sule Unal, MD, Fatma Gumruk, MD, Prof, Lance Davis, MD, Tasha Morrison, MPH, BA, Andrew Campbell, MD, Patrick G. Gallagher, MD, Bernard G Forget, MD, Martin H. Steinberg, MD and David H.K. Chui, MD

Red Cells and Erythropoiesis, Structure and Function, Metabolism, and Survival, Excluding Iron: Poster II

Amalia A Figueroa, PhD, Sandra Martinez-Morilla, PhD, Srividhya Venkatesan, MS and Shilpa M Hattangadi, MD

Health Services and Outcomes Research - Non-Malignant Conditions: Poster III

Natalia Neparidze, MD, Michael Cecchini, MD, Ellice Y. Wong, MD and Michal Rose, MD

Granulocytes, Monocytes and Macrophages: Poster III

Stephanie C. Eisenbarth, MD, PhD, Jeanne E Hendrickson, MD, Samuele Calabro, PhD and Antonia Gallman, BS

Red Cells and Erythropoiesis, Structure and Function, Metabolism, and Survival, Excluding Iron: Poster III

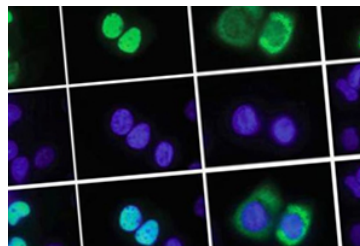
Kimberly Lezon-Geyda, PhD, Yelena Maksimova, MS, Vincent P Schulz, PhD, Bernard G Forget, MD and Patrick G Gallagher, MD

Disordered Gene Expression in Hematologic Malignancy, including Disordered Epigenetic Regulation: Poster III

Yang Xi, PhD, Velizar Shivarov, MD, PhD, Gur Yaari, PhD, Steven Kleinstein, PhD and Matthew P. Strout, MD, PhD

Experimental Transplantation: Basic Biology, Engraftment and Disease Activity: Poster III

Jana M. Ellegast, MD, Yasuyuki Saito, MD, PhD, Richard A. Flavell, PhD and Markus G. Manz, MD



[Read More >>](#)

Congratulations to the members of our Hematology Program who are presenting at the American Society of Hematology Annual meeting in San Francisco this weekend. Yale Cancer Center has over 20 abstracts scheduled for presentation! Good luck to our team!



[Read More >>](#)

We all look forward to this holiday season for its love, laughter, and great food! But for patients undergoing treatment for cancer, large holiday meals or big holiday gatherings can be the source of anxiety and stress. Also, during treatment, some patients may experience side effects including nausea and taste changes.

If you or a loved one is undergoing cancer treatment, review these tips from the [American Cancer Society](#) to minimize stress and enjoy your upcoming holiday.

*Basic Science and Clinical Practice in Blood Transfusion:
Poster III*

Alex B Ryder, MD, Jeanne E Hendrickson, MD and Christopher A. Tormey, MD

Hematopoiesis and Stem Cells: Microenvironment, Cell Adhesion and Stromal Stem Cells: Poster III

Yasuyuki Saito, MD, PhD, Jana M. Ellegast, MD, Rouven Müller, MD, Richard A. Flavell, PhD and Markus G. Manz, MD

Breast Center Represents at SABCS

This was a busy week for Yale Cancer Center and Smilow Cancer Hospital at national meetings. We also had a great presence at the San Antonio Breast Cancer Symposium this week from the breast team. Below are the presentations from Yale. Congratulations to the entire team!

Poster Discussion Session 1:

PD1-6 Inhibition of PD-L1 by MPDL3280A leads to clinical activity in patients with metastatic triple-negative breast cancer
Emens LA, Braiteh FS, Cassier P, DeLord J-P, Eder JP, Shen X, Xiao Y, Wang Y, Hegde PS, Chen DS, Krop I.

Poster Discussion Session 3:

PD3-2 Broad exonic DNA diversity is associated with resistance to taxane-FAC chemotherapy in triple negative breast cancer
Jiang T, Shi W, Symmans WF, Li C, Platt J, Lau R, Wali VB, Lifton R, Pusztai L, Hatzis C.

PD3-4 Reliability of whole exome sequencing for assessing intratumor heterogeneity from breast tumor biopsies
Shi W, Chagpar A, Jiang T, Lannin DR, Killelea B, Horowitz N, Lim R, Platt J, Ng CKY, Wali VB, Weigelt B, Reis-Filho JS, Hatzis C, Pusztai L.

General Session 1:

S1-09 A phase Ib study of pembrolizumab (MK-3475) in patients with advanced triple-negative breast cancer
Nanda R, Chow LQ, Dees EC, Berger R, Gupta S, Geva R, Pusztai L, Dolled-Filhart M, Emancipator K, Gonzalez EJ, Houp J, Pathiraja K, Karantzis V, Iannone R, Gause CK, Cheng JD, Buisseret L.

General Session 6:

S6-03 Randomized phase II trial of fulvestrant alone or in combination with bortezomib in hormone receptor-positive metastatic breast cancer resistant to aromatase inhibitors: A New York cancer consortium trial
Adelson KB, Ramaswamy B, Sparano JA, Christos PJ, Wright JJ, Raptis G, Villalona MC, Ma CX, Hershman D, Baar J, Klein P, Cigler T, Budd GT, Novik Y, Tan AR,



[Read More >>](#)

WATCH: Dr. Gary Kupfer, Chief of Pediatric Hematology & Oncology at Smilow Cancer Hospital, on this morning's Today Show discuss the challenges that teenagers with cancer are faced with.

One teenage patient remarked, "Everybody I know kind of keeps moving forward and I'm stuck where I am. It's a very different place in life to get cancer."

The segment highlights Teen Cancer America and [Yale-New Haven Hospital](#) and their efforts to help teenagers with cancer in America.



[Read More >>](#)

Closer to Free

closer to free

The fund to advance cancer research and enhance patient care

Events

December 12; 7:00 AM

Tannenbaum S, Goel A, Levine E, Shapiro CL, Andreopoulou E, Naughton M, Kalinsky K, Waxman S, Germain D.

Poster Session 3:

P3-04-07	Androgen receptor expression in triple negative breast cancer Gilmore H, Varadan V, Williams N, Thompson CL, Kim S, Hsu P, Miskimen K, Palkar A, Vinayak S, Lindner R, Harris L.
P3-06-24	Brief exposure to trastuzumab prior to preoperative chemotherapy confirms predictors of response to treatment Vadodkar AS, Varadan V, Miskimen K, Bossuyt VV, Abu-khalaf MM, Krop I, Winer E, Harris L.
P3-06-26	Measurement of domain-specific HER2 (ERBB2) expression classifies benefit from Trastuzumab in breast cancer Carvajal-Hausdorf DE, Schalper KA, Pusztai L, Psyrris A, Kalogeras KT, Kotoula V, Fountzilas G, Rimm DL.
P3-07-11	Trends in clinicopathologic features and systemic therapy use in breast cancer patients: Findings from the National Cancer Database Chagpar AB, Mougalian S, Lannin D, Abu-Khalaf M, Killelea B, Sanft T, Pusztai L.
P3-07-19	Breast cancer risk perception and adherence to U.S. cancer prevention guidelines Hofstatter E, Chagpar A.
P3-11-02	Predictors of complete pathological response to neoadjuvant chemotherapy for breast cancer: 19,310 cases from the national cancer database treated in 2010 and 2011 Yang VQ, Han G, Mougalian SS, Killelea BK, Horowitz N, Chagpar AB, Hayse B, Pusztai L, Lannin DR.
P3-11-16	S0800: Nab-paclitaxel, doxorubicin, cyclophosphamide, and pegfilgrastim with or without bevacizumab in treating women with inflammatory or locally advanced breast cancer (NCI CDR0000636131) Nahleh ZA, Barlow WE, Hayes DF, Schott AF, Gralow JR, Perez EA, Sikov WM, Chennuru S, Mirshahidi H, Vidito S, Lew DL, Pusztai L, Livingston RB, Hortobagyi GN.

Poster Session Ongoing Trials 2:

OT2-3-01	SGN-LIV1A: A phase 1 trial evaluating a novel antibody-drug conjugate in patients with LIV-1-positive breast cancer Forero A, Burris III H, LoRusso P, Specht J, Miller K, Mita M, Liu MC, Modi S, Pusztai L, Sussman D, Kostic A.
-----------------	---

Poster Session Ongoing Trials 1:

Yale Eye Center Clinical Conference Series

Temple Street Medical Center
Conference Room
Tailoring Our Communication to Best Suit Our Patients
Andrew Putnam, MD
[Read More >> \(PDF\)](#)

**December 12; 12:00 PM
YCC Research in Progress Meeting**

NP4-101A
Identifying New Combination Targets for Cancer Therapy
David Stern, PhD
[Read More >> \(PDF\)](#)

**December 14; 6:00 PM
Yale Cancer Center Answers**

WNPR
The Crisis in Cancer Care
Kerin Adelson, MD
[Read More >>](#)

**December 16; 9:30 AM
Pathology Research in Progress Talks**

TAC N-107
Mixed Signals: Stratified Control of IGF-1 Gene Expression by Hypoxia and Stress Hormones
Thomas McCarthy, PhD and Michael Centrella, PhD
[Read More >>](#)

**December 16; 12:00 PM
Yale Cancer Center / Schwartz Center Rounds**

Park Street Auditorium
Bouncing Back When The "Cure" didn't Cure...
Thomas Lynch Jr., MD
[Read More >> \(PDF\)](#)

**December 17; 12:00 PM
Cancer Prevention and Control Research Program**

LEPH/Rm 216
Comparative Effectiveness and Patient-Reported Outcomes in Breast Cancer
Sarah Mougalian, MD
[Read More >>](#)

**December 18; 5:30 PM
YCC / SCH Holiday Party 2014**

OT1-1-13 A Phase 2, randomized, open-label, multicenter, safety and efficacy study of oral lucitanib in patients with metastatic breast cancer with alterations in the FGF pathway
Abu-Khalaf M, Mayer I, Litten JB, Raponi M, Allen AR, Puzstai L, Arteaga CL.

Poster Session 1:

P1-09-16 Exercise and the influence of endocrine therapy on cardiac and metabolic outcomes in breast cancer survivors
Knobf MT, Harris L, Insogna K, Smith B, Jeon S.

P1-12-08 Bortezomib enhances the efficacy of fulvestrant by promoting the aggregation of the ER in the cytoplasm
Germain D, Adelson K, Raptis G, Waxman S.

P1-15-04 The adoption of hypofractionated whole breast irradiation for early-stage breast cancer: A national cancer data base analysis
Wang EH, Mougalian SS, Soulos PR, Rutter CE, Evans SB, Haffty BG, Gross CP, Yu JB.

Poster Session 2:

P2-03-05 The heterogeneous clinical behavior of luminal breast cancers is associated with different mutational landscapes
Bianchini G, Galeota E, Jiang T, Callari M, Zambetti M, Iwamoto T, Karn T, Hatzis C, Puzstai L, Gianni L.

P2-05-04 Gene expression associated with poor prognosis of young TNBC patients
Karn T, Puzstai L, Liedtke C, Bianchini G, Györfy B, Hatzis C, Rody A, Müller V, Schmidt M, Holtrich U, Becker S.

Poster Session 6:

P6-10-02 The KRAS-variant, multiple breast cancer risk, and estrogen withdrawal
Weidhaas JB, Mcveigh T, Pilarski R, Miller N, Sweasy J, Kerin M, Nallur S, Sadofsky J, Nemec A, Sweeney K, Daniel Z.

P6-11-01 A broad spectrum therapeutic strategy for TNBC revealed by a new pathway that coordinates oncogenic RTKs
Westbrook TF, Nair A, Sun T, Karlin KL, Kessler J, Migliaccio I, Nguyen DX, Bernardi RJ, Renwick A, Creighton CJ, Dephore N, Gygi SP, Shaw CA, Gibbs R, Wheeler D, Schiff R, Christensen JG, Shields DJ, Osborne CK, Elledge SJ, Hilsenbeck SG, Lewis MT.

Poster Session 5:

P5-02-08 Incidence of misattributed specimen provenance among surgical breast biopsies
Lerner AG, Bush AL, Kenler AS, Dorfman DD, Morgan TA, Boyd B, Burak WE, Fine RE.

Peabody Museum
[Read More >>](#)

**December 19; 12:00 PM
YCC Research in Progress Meeting**

NP4-101A
Prevention Strategies in Head and Neck Cancer
Aartia Bhatia, MD, MPH
[Read More >>](#)

**December 21; 6:00 PM
Yale Cancer Center Answers**

WNPR
Chemoprevention
Erin Hofstatter, MD
[Read More >>](#)

Holiday Party!



Save the date to join Yale Cancer Center and Smilow Cancer Hospital for our annual holiday party at the Peabody Museum!

Thursday, December 18th
5:30 - 7:30 PM
Families are welcome!

[Learn More >>](#)

Submissions

Please submit your recent publication and grant announcements to:

Renee Gaudette
Director, Public Affairs and Marketing

P5-03-01 Breast cancer biology varies dramatically by method of detection and may account for overdiagnosis
Hayse B, Kanumuri P, Killelea BK, Horowitz NR, Chagpar AB, Lannin DR.

renee.gaudette@yale.edu

 Forward to a Friend

Poster Session 4:

P4-12-11 Patient perceptions of the impact of genetic testing for breast cancer risk on health insurance
Hofstatter E, Chagpar A.

Smilow 5-Year Anniversary Awards

In celebration of the 5th anniversary of Smilow Cancer Hospital, and in recognition of our care providers, we will be honoring four providers with awards during our 5-year anniversary celebration on Friday, January 30 at the Omni Hotel.

[Learn More >>](#)

Smilow Compassionate Caregiver Awards

The Smilow Compassionate Caregiver Awards celebrate caregivers who put in their whole heart to take excellent care of our patients, advocate for our patients, and work in partnership with the healthcare team to ensure the care plan is followed to achieve the treatment goal.

Three awards will be given to honor a Physician, Nurse, and Social Worker.

[Download Application >>](#)

Smilow Achievement Award

The Smilow Achievement Award will be presented to a role model who has made a significant contribution to the culture and patient care at Smilow Cancer Hospital or at our Care Centers. Their career has demonstrated a sustained and lasting contribution to the field of oncology and their influence has made a positive impact on care for our patients.

One award will be given to honor an individual whose influence, mentorship, and positive impact on cancer care has made a positive difference at Smilow Cancer Hospital.

[Download Application >>](#)

Notables

Laura J. Morrison, MD co-presented a concurrent session with national colleagues at the **Association of American Medical Colleges 2014 Annual Meeting** entitled: A Model for Sharing Competency-Based Teaching Innovations: the Palliative Care Education Exchange.

Suchitra Krishnan-Sarin, PhD, Associate Professor of Psychiatry and a member of the Yale Cancer Center Cancer Prevention and Control Program, has been appointed to the Board of Trustees of the Connecticut Tobacco and Health Trust Fund.

Dr. Roy Herbst presented the Paul Calabresi Visiting Professor Lectureship at Washington University on "Personalized Immunotherapy for Non-Small Lung Cancer."

Research in the News

Smoking lights up brain's response differently in men and women

Yale researchers using a new brain imaging analysis method have confirmed that smoking cigarettes activates a dopamine-driven pleasure and satisfaction response differently in men compared to women.

The study, published in *The Journal of Neuroscience*, used a new way of analyzing PET (positron emission tomography) scans to create "movies" of the dopamine response during smoking to demonstrate for the first time that smoking-induced dopamine activation occurs in a different brain region and much faster in nicotine-dependent men than women.

[Learn More >>](#)

E-cigs catching on in Connecticut schools, new study shows

One in four Connecticut high school students surveyed report having tried an e-cigarette, a Yale-led study has found.

The Yale study provides one of the first comprehensive evaluations of e-cigarette use among Connecticut youth.

"We were surprised so many kids were using these products," said Suchitra Krishnan-Sarin, associate professor in psychiatry and lead author of the study, which appeared Dec. 9 in the journal *Nicotine and Tobacco Research*. "The other thing which both surprised and worried me is that adolescents who have never smoked cigarettes are initiating use of e-cigarettes."

[Learn More >>](#)

Analysis shows increased use of hypofractionated whole-breast irradiation for patients with early-stage breast cancer

The use of hypofractionated whole-breast irradiation (HF-WBI) for patients with early-stage breast cancer increased 17.4 percent from 2004 to 2011, and patients are more likely to

receive HF-WBI compared to conventionally fractionated whole-breast irradiation (CF-WBI) when they are treated at an academic center or live ≥ 50 miles away from a cancer center, according to a study published in the December 1, 2014 issue of the International Journal of Radiation Oncology.

[Read More >>](#)

New drug combination for advanced breast cancer delays disease progression

A new combination of cancer drugs delayed disease progression for patients with hormone-receptor-positive metastatic breast cancer, according to a multi-center phase II trial. The findings of the randomized study were presented at the 2014 San Antonio Breast Cancer Symposium by Kerin Adelson, MD, Assistant Professor of Medical Oncology at Yale Cancer Center and Chief Quality Officer at Smilow Cancer Hospital at Yale-New Haven.

The trial enrolled 118 post-menopausal women with metastatic hormone-receptor-positive breast cancer whose cancer continued to progress after being treated with an aromatase inhibitor. The study, based on work done by Doris Germain of Mt. Sinai Hospital, found that the combination of the drugs bortezomib and fulvestrant - versus fulvestrant alone - doubled the rate of survival at 12 months and reduced the chance of cancer progression overall.

[Read More >>](#)

Closer to Free

The 2015 Closer to Free Ride has been confirmed for **Saturday, September 12!** We'll be celebrating the Ride's 5th anniversary and we have big plans to make this the biggest and best CTF Ride yet!

As is our tradition, the 2015 online registration will open at our **Launch Party on Wednesday, March 11, 2015 at BAR in New Haven from 5pm-8pm.** So you've got two dates to mark on your calendar: March 11th for the Launch Party and September 12th for the 2015 Closer to Free Ride.

Finally, we want to share our recently completed [2014 Closer to Free Ride video](#). We love it and we hope it brings back fond memories for you, your friends and your donors.



Employee Profile: Nelson Delgado



Nelson Delgado joined Yale-New Haven Hospital in 2009 as a temporary employee in the IT Department. After a few months, the opportunity arose to become part of a new department within IT, the Audio Visual Department, and Nelson was hired in 2010 as Systems Analyst. The AV crew oversees video conferences, conference rooms, and new AV installations for the entire Yale-New Haven Health System.

On a daily basis, Nelson manages video conference calls both within the system and externally. He also collaborates with Classroom Technology and Event Services at Yale School of Medicine to exchange ideas and keep up with the changing times. One of his main roles includes providing support to the Smilow Cancer Hospital Tumor Boards. He ensures that all the

technology in the room is working ahead of the Tumor Board meetings. He is also responsible for a large number of meetings including Yale Cancer Center Grand Rounds, Schwartz Rounds, PSQC, HSC Safety Huddle, and Medical and Anesthesiology Grand Rounds. Even with that busy schedule, he also works on in-house video projects and their production.

"This organization is geared for change in our community and I feel lucky to be a part of the team," said Nelson. "I handle a variety of projects, and get to interact with a lot of different departments and areas."

Among the highlighted productions Nelson has been involved with are the Yale-New Haven Health System's Institute for Excellence, producing live webinars for their Essential Components of Leadership Development program. These have had enormous success within the Y-NHH system. He also supports Bridgeport Hospital and Greenwich Hospital on a daily basis in coordinating videoconferences and Livestream events. Nelson was recently recognized along with his teammates as Employee of the Month by their division, Finance and Corporate Services.

"There isn't a meeting or event at Smilow Cancer Hospital that doesn't rely on Nelson's expertise to run smoothly. The faculty and staff of Yale Cancer Center and Smilow Cancer Hospital depend on Nelson for all of our needs at Grand Rounds, faculty meetings, patient events, CME symposiums, and other events and he always ensures everything is managed well for us. He is uniquely committed to his work, and always reliable. We appreciate all of his help on a daily basis," said Thomas Lynch, MD, Director of Yale Cancer Center and Physician-in-Chief of Smilow Cancer Hospital.

Funding and Award Opportunities

Blavatnik Awards for Young Scientists

- Eligible candidates must have been born on or after January 1, 1973, no exceptions.
- Candidates must currently hold a postdoctoral-rank position at a research institution located in NY, NJ, or CT and have earned a doctoral degree (PhD, DPhil, MD, DDS, DVM, etc.).
- Candidates must have made significant contributions to the life sciences, physical sciences and engineering, or chemistry **during** postdoctoral training.

Awards recognize high-impact and innovative accomplishments by postdoctoral-rank applicants.

Work completed as part of the candidate's doctoral training will not be reviewed.

- Winners will receive \$30,000 in unrestricted funds. Finalists will receive \$10,000 in unrestricted funds.

Application Deadline: January 7, 2015

[Learn More >> \(PDF\)](#)

Avon Foundation for Women Breast Cancer Research Grants

Supports research projects aimed at understanding the causes of breast cancer, prevention or developing new tests to assess risk. Funds can also be requested to develop new treatments for unmet needs in breast cancer.

Letter of Intent Due: January 15, 2015

[Learn More >>](#)

Avon Foundation for Women Safety Net Hospital Program Grants

Supports hospital-based programs including equipment upgrades, staff such as nurse-navigators or lay-navigators, and programmatic expenses.

Letter of Intent Due: January 9, 2015

[Learn More >>](#)

2015 Sontag Foundation - Early Career Distinguished Scientist Award for Brain Cancer Research

Career development award supporting early career scientists with inspiring, potential-laden brain cancer proposals. The foundation is highly interested in researchers that may bring new perspectives to bear on the complex questions related to brain cancer.

Applicant's initial faculty appointment must have been no earlier than March 2012.

Up to \$600,000 over 4 years.

Application Deadline: March 19, 2015

[Learn More >>](#)

Recent Publications

Release the Hounds! Activating the T-Cell Response to Cancer.

Sznol M, Longo DL.

N Engl J Med. 2014 Dec 6.

[Read More >>](#)

Developing competencies for pediatric hospice and palliative medicine.

Klick JC, Friebert S, Hutton N, Osenga K, Pituch KJ, Vesel T, Weidner N, Block SD, Morrison LJ; American Board of Hospice and Palliative Medicine Competencies Work Group. *Pediatrics*. 2014 Dec;134(6):e1670-7. doi: 10.1542/peds.2014-0748. Epub 2014 Nov 17.

[Read More >>](#)

Randomized Exercise Trial of Aromatase Inhibitor-Induced Arthralgia in Breast Cancer Survivors.

Irwin ML, Cartmel B, Gross C, Ercolano E, Li F, Yao X, Fiellin M, Capozza S, Rothbard M, Zhou Y, Harrigan M, Sanft T, Schmitz K, Neogi T, Hershman D, Ligibel J. *J Clin Oncol*. 2014 Dec 1. pii: JCO.2014.57.1547.

[Read More >>](#)

Sleep disorders and fatigue: special issues in the older adult with cancer.

Waldman L, Morrison LJ. *Cancer J*. 2014 Sep-Oct;20(5):352-7.

[Read More >>](#)

Neuregulin 1-activated ERBB4 interacts with YAP to induce Hippo pathway target genes and promote cell migration.

Haskins JW, Nguyen DX, Stern DF. *Sci Signal*. 2014 Dec 9;7(355):ra116.

[Read More >>](#)

A prospective follow-up study of the relationship between C-Reactive Protein and human cancer risk in the Chinese Kailuan Female Cohort.

Wang G, Li N, Chang S, Bassig BA, Guo L, Ren J, Su K, Li F, Chen S, Wu S, Zou Y, Dai M, Zheng T, He J. *Cancer Epidemiol Biomarkers Prev*. 2014 Dec 9.

[Read More >>](#)

Feasibility, Sensitivity, and Specificity of Postprocedure Peritoneal Cytology.

Seagle BL, Dawson M, Samuelson R, Chacho MS, Rutherford TJ, Shahabi S. *Reprod Sci*. 2014 Dec 7.

[Read More >>](#)

LKB1 preserves genome integrity by stimulating BRCA1 expression.

Gupta R, Liu AY, Glazer PM, Wajapeyee N.
Nucleic Acids Res. 2014 Dec 8.

[Read More >>](#)

Casein kinase 2 prevents mesenchymal transformation by maintaining Foxc2 in the cytoplasm.

Golden D, Cantley LG.
Oncogene. 2014 Dec 8.

[Read More >>](#)

Stem Cells in the Wild: Understanding the World of Stem Cells through Intravital Imaging.

Brown S, Greco V.
Cell Stem Cell. 2014 Dec 4;15(6):683-6.

[Read More >>](#)

Optimizing the sequence of anti-EGFR targeted therapy in EGFR-mutant lung cancer.

Meador CB, Jin H, de Stanchina E, Nebhan CA, Pirazzoli V, Wang L, Lu P, Vuong H, Hutchinson KE, Jia P, Chen X, Eisenberg R, Ladanyi M, Politi K, Zhao Z, Lovly CM, Cross DA, Pao W.

Mol Cancer Ther. 2014 Dec 4.

[Read More >>](#)

Confirming the two factor model of dispositional cancer worry.

Jensen JD, Yale RN, Carcioppolo N, Krakow M, John KK, Weaver J.

Psychooncology. 2014 Dec 5.

[Read More >>](#)

The Role of Adjuvant Therapy in the Management of Head and Neck Merkel Cell Carcinoma: An Analysis of 4815 Patients.

Chen MM, Roman SA, Sosa JA, Judson BL.
JAMA Otolaryngol Head Neck Surg. 2014 Dec 4.

[Read More >>](#)

Quantitative assessment of miR34a as an independent prognostic marker in breast cancer.

Agarwal S, Hanna J, Sherman ME, Figueroa J, Rimm DL.
Br J Cancer. 2014 Dec 4.

[Read More >>](#)

TRIM37 is a new histone H2A ubiquitin ligase and breast cancer oncoprotein.

Bhatnagar S, Gazin C, Chamberlain L, Ou J, Zhu X, Tushir JS, Virbasius CM, Lin L, Zhu LJ, Wajapeyee N, Green MR. Nature. 2014 Dec 4;516(7529):116-20.

[Read More >>](#)