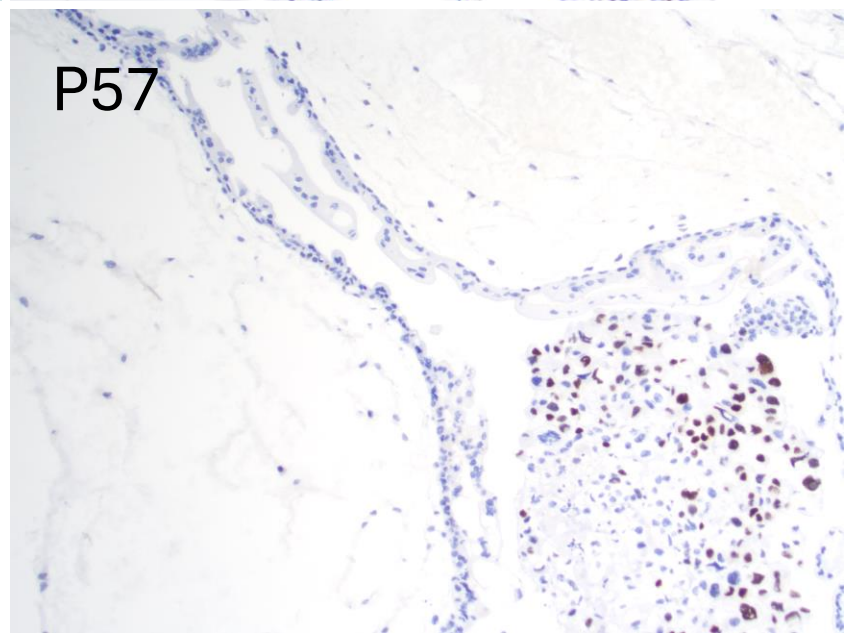
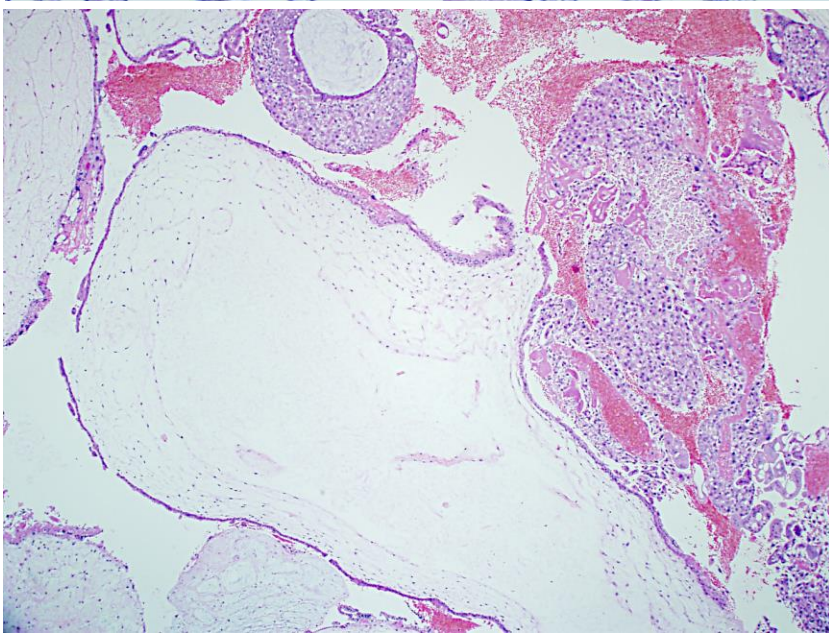
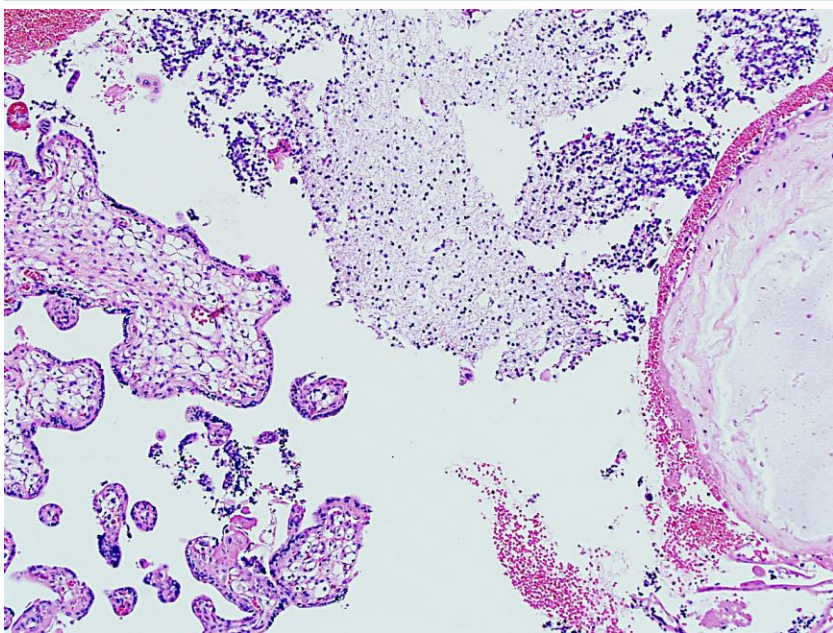
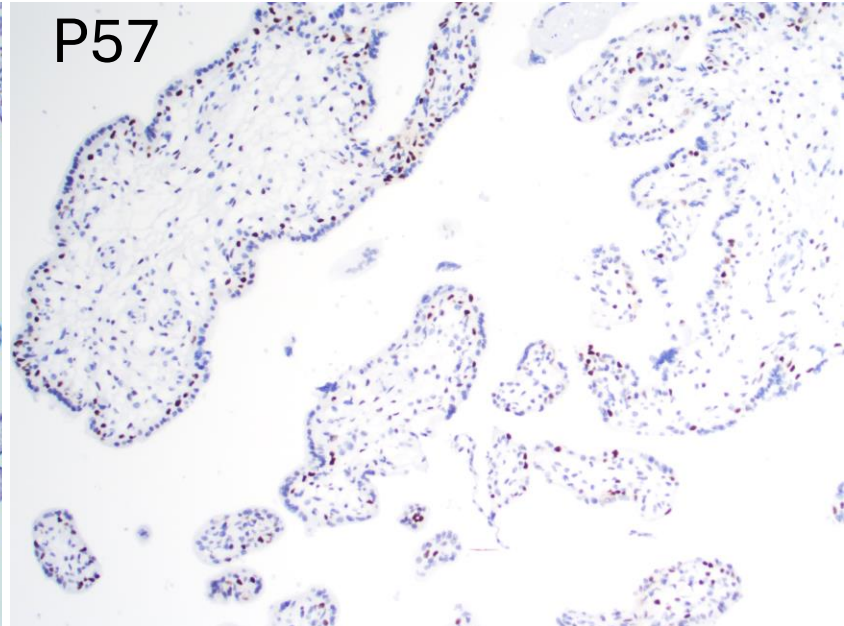
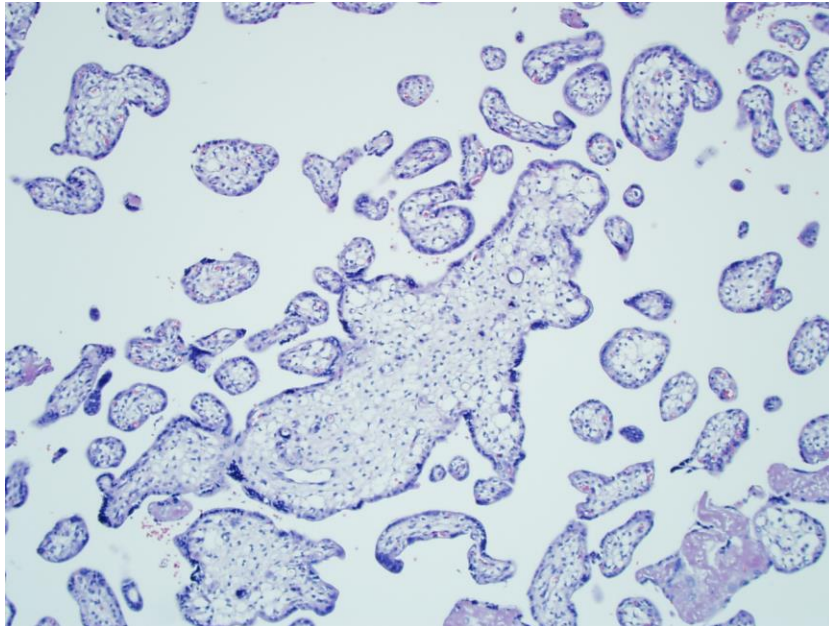
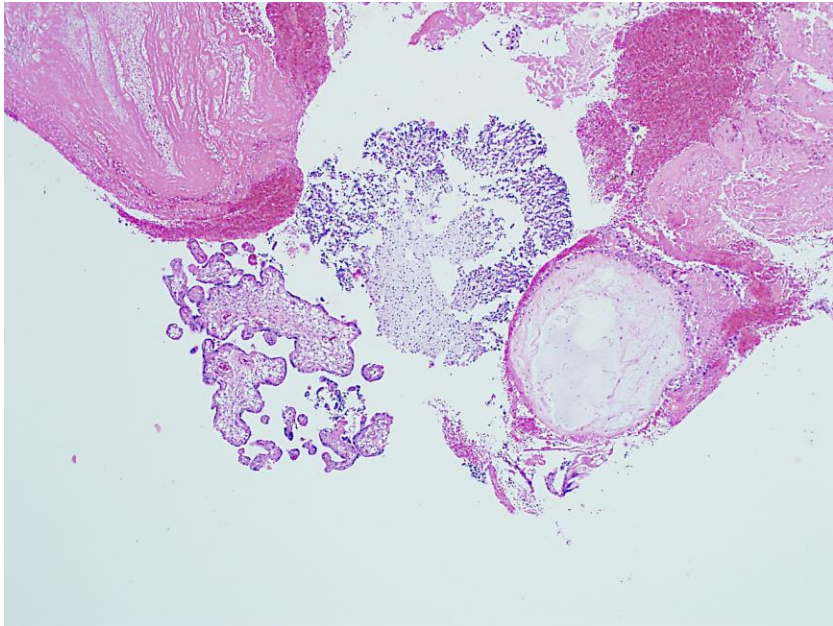


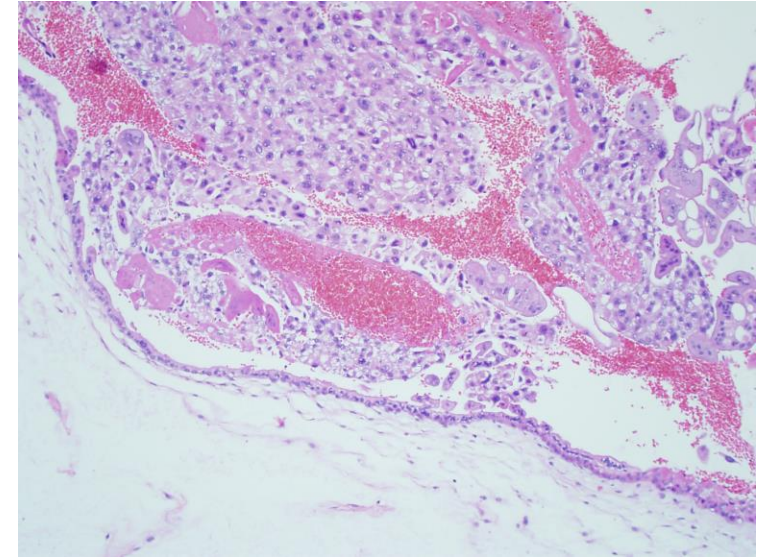
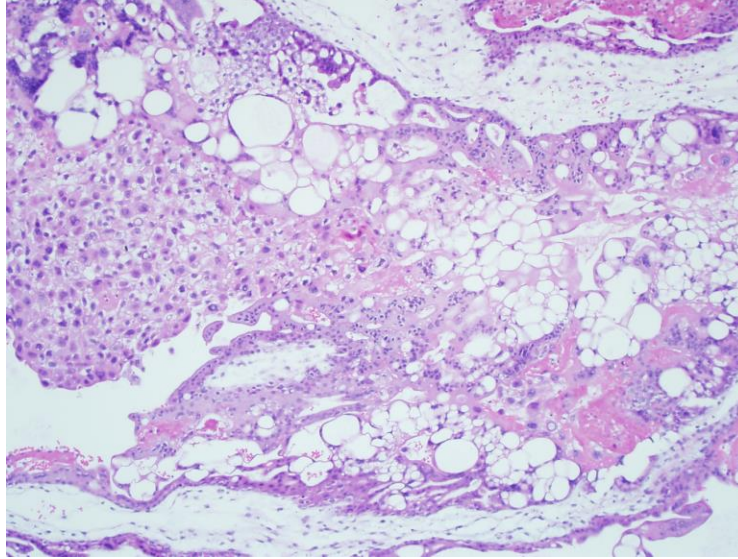
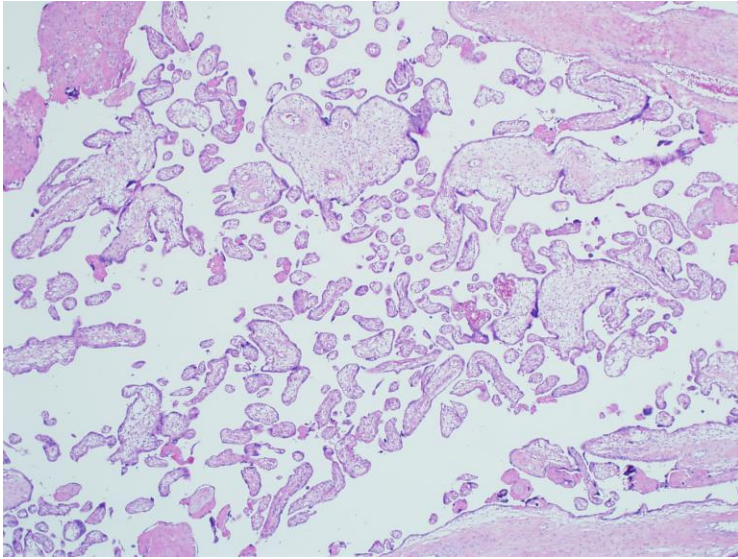


39-year-old woman with clinical suspicion for molar gestation undergoing uterine D/C.

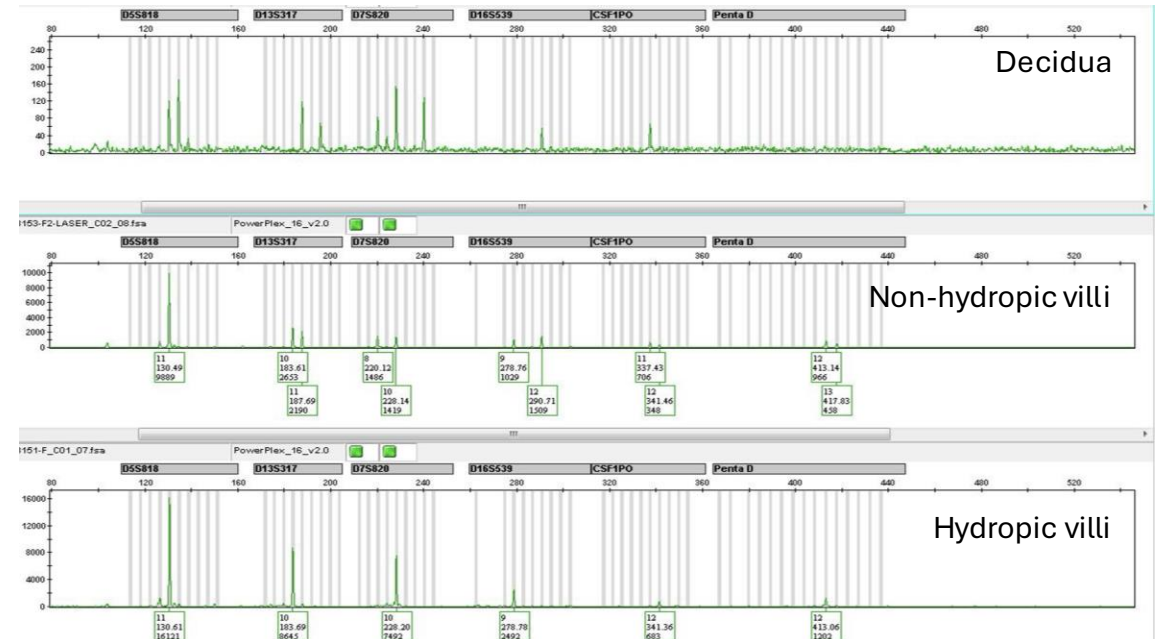
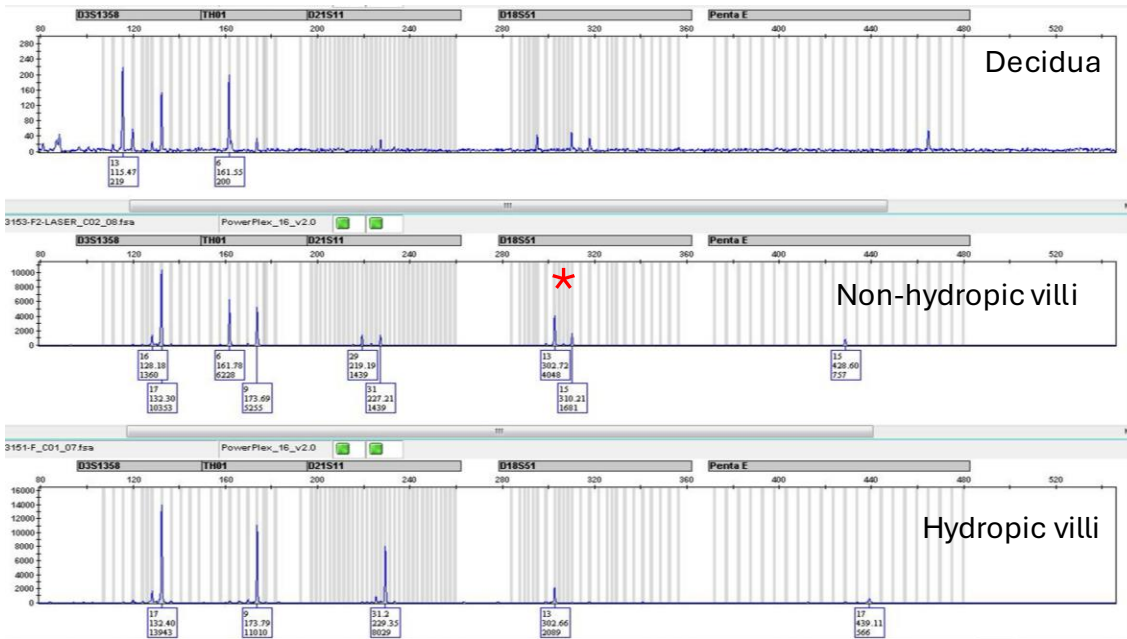


- A. Partial mole
- B. Complete mole
- C. Partial mole in Twin
- D. Complete mole in Twin

Additional Histological Images



There are admixed two populations of chorionic villi: small sized non-hydrotic villi and markedly enlarged hydrotic villi with cistern formation, abnormal trophoblastic proliferation and loss of P57 expression in the cytotrophoblast and villous stromal cells.



STR genotype panel: a balanced biparental profile in the non-hydropic villi (except three allelic copies at D18S51 locus, asterisk) and a homozygous paternal-only profile in the hydropic villi.

Two villous populations are present: one population shows markedly hydropic villi with cistern formation, abnormal trophoblastic proliferation and loss of P57 expression in the nuclei of cytotrophoblast and villous stromal cells, and another villous population shows normal size, non-hydropic villi with retained expression of P57 in cytotrophoblast and villous stromal cells.

STR genotyping reveals a homozygous paternal-only profile in the hydropic villi and a balanced biparental profile except the presence of three allelic copies at D18S51 locus on chromosome 18 in the non-hydropic villi.

Final Diagnosis: Twin gestation consisting of a complete mole and a non-molar placenta with possible Trisomy 18 (Edward syndrome)