



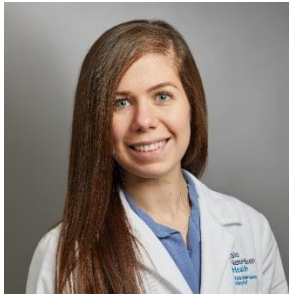
## Yale Pulmonary Critical Care and Sleep Medicine Grand Rounds

**YaleCME**  
CONTINUING MEDICAL EDUCATION

Presented by

Yale School of Medicine, Department of Internal Medicine, Section of Pulmonary, Critical Care and Sleep Medicine

# Two X Chromosomes: Implications in Pulmonary Medicine



## Shannon Kay, MD

Fellow of Pulmonary and Critical Care Medicine  
Yale School of Medicine

Wednesday, September 30, 2020 @ 3-4 pm EDT

Moderator: Jose Gomez-Villalobos, MD

### REMOTE ATTENDANCE ONLY – NO LOCAL AUDIENCE

PC, Mac, Linux, iOS or Android: <https://zoom.us/j/94544698749>

Telephone: Dial: +1 203 432-9666 or (+1 888 788-0099 or +1 877 853-5247 US Toll-free); Meeting ID: 945 4469 8749

CME credit for live event only.

To record your attendance, text the ID# provided at the session to [203-442-9435](tel:203-442-9435) from 2:45pm-4:15pm on September 16, 2020

There is no corporate support for this activity. This course will fulfill the licensure requirement set forth by the State of Connecticut.

### ACCREDITATION

The Yale School of Medicine is accredited by the Accreditation Council for Continuing Medical Education to provide continuing medical education for physicians.

### TARGET AUDIENCE

Attending physicians, house staff/fellows, medical students, nurses, physician assistants.

### NEEDS ASSESSMENT

Sexual dimorphism, a term used to describe differences in biological traits extending beyond the sex organs, is obvious throughout nature as well as in humans. Despite limited study of sex differences in medicine, pulmonary physiology unquestionably differs between sexes across the lifespan. As males and females experience pulmonary disease in a distinct manner, sex should be considered an important biological variable in the care of pulmonary patients.

### LEARNING OBJECTIVES

At the conclusion of this talk, individuals will:

1. Understand the influence of sex and sex hormones on pulmonary physiology throughout the lifespan.
2. Investigate sex-specific impacts on pulmonary disease (including asthma, COPD, lung cancer, pulmonary

hypertension, and bronchiectasis) and review female-predominant pulmonary conditions.

3. Explore future steps in the understanding of sex differences in pulmonary medicine.

### DESIGNATION STATEMENT

The Yale School of Medicine designates this live activity for 1 AMA PRA Category I Credit(s)<sup>TM</sup>. Physicians should only claim the credit commensurate with the extent of their participation in the activity.

### FACULTY DISCLOSURES

Richard Matthay, MD, Course Director – No conflicts of interest

Shannon Kay, MD – No conflicts of interest

It is the policy of Yale School of Medicine, Continuing Medical Education, to ensure balance, independence, objectivity, and scientific rigor in all its educational programs. All faculty participating as speakers in these programs are required to disclose any relevant financial relationship(s) they (or spouse or partner) have with a commercial interest that benefits the individual in any financial amount that has occurred within the past 12 months; and the opportunity to affect the content of CME about the products or services of the commercial interests. The Center for Continuing Medical Education will ensure that any conflicts of interest are resolved before the educational activity occurs.