



# YALE CHILD STUDY CENTER

*Where discovery inspires care*

## Looking Ahead to the New Academic Year: Bringing our Community Together

September 10, 2024

Linda C. Mayes, M.D.

Yale Medicine | Yale SCHOOL OF MEDICINE

1

## Welcome “Back”

*What Images from  
Summer Would You Like  
to Hold Onto?*



2

The New York Times

OPINION  
GUEST ESSAY

# How Should We Mourn the End of Summer?

Sept. 1, 2024





<https://www.nytimes.com/2024/09/01/opinion/summer-sadness-grief-seasons.html?searchResultPosition=1>

3

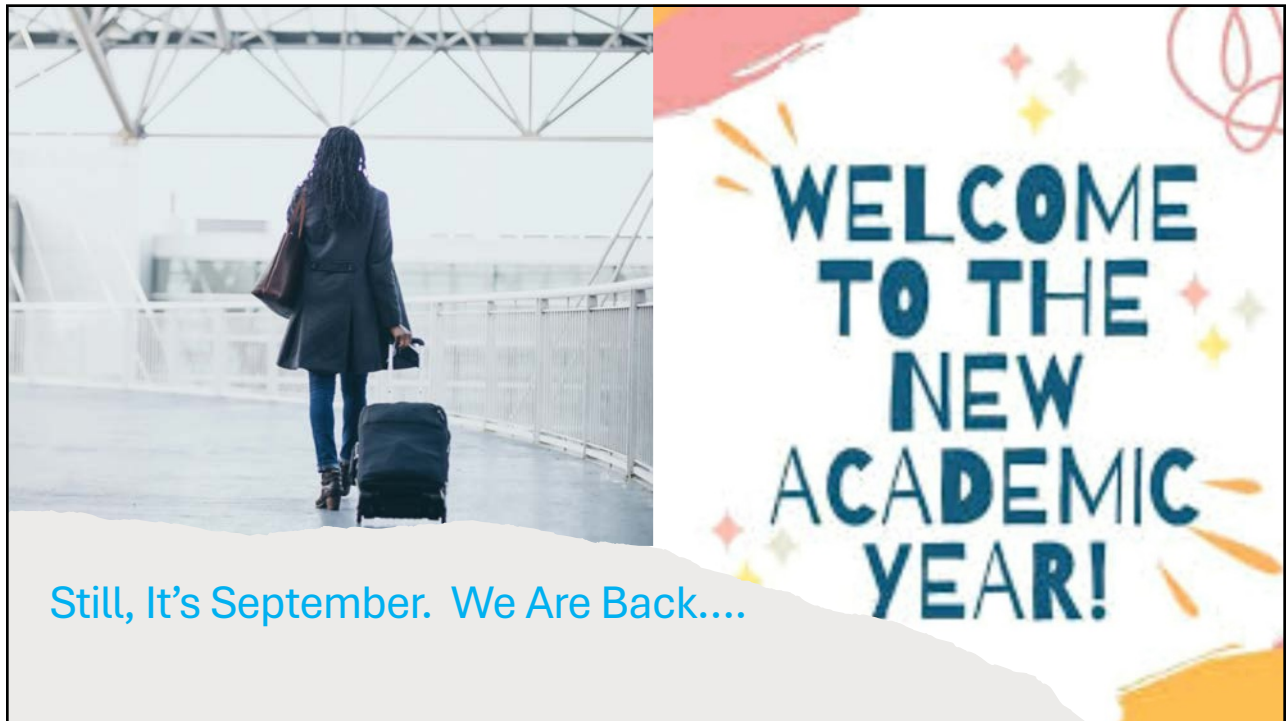
*A Personal Sampling*

---

*What Images from Summer Would You Like to Hold Onto?*






4



5

## What Are the Purposes of our Gathering?

Opening of the Academic Year 2024-2025      Beginning of the New Year 2025

-  Pausing & Reflecting
-  Welcoming
-  Looking Ahead

## State of the Department

6

## Tradition of Opening Themes for the Year



**Spinebush**  
*Spend time in an aimless, idle way*  
(2016)



**Vacation (vacare)**  
*to be unoccupied*  
(2017)



**Sojourn**  
*Journey to a world of its own*  
(2018)



**A Summer Frame of Mind**  
*Sometimes is always the best of what might*  
(2019)



**Rejuvenation**  
*Open to Possibilities*  
(2020)



**Matters of the Heart**  
(2021)



**Generativity, Imagination, & Grace**  
(2022)



**Staying Grounded amidst Change**  
(2023)

7

## Change (and Upheaval) Continues....













Current rate of COVID-19 infections  
As of June 18, 2024

Legend: Growing, Likely growing, Stable or uncertain, Not estimated

Data: CDC; Map: Raphael Mather/pepco/Axis



High humidity in the East  
Deep Valley hit 107°F (42°C) on July 7, marking the highest temperature on record

Heatwaves that left people without power and air conditioning amid hot weather

Minimum 5-day Average Air Temperature (°C)

8



Community

**Our relationships ground us in our commitments to each other, even as our circumstances become uncertain or quickly change.”**

MIKE ERWIN & WILLYS DEVOLL  
*Leadership Is a Relationship*

STAYING GROUNDED DURING UNCERTAIN TIMES


9

2024 Theme  
Restoring  
Community

EPISODE 127  
**RESTORING COMMUNITY:  
BUILDING UNDERSTANDING**

<https://www.pewtrusts.org/en/research-and-analysis/articles/2023/04/28/restoring-community-building-understanding>

10






## Origin of "Community"

- Latin "communitatem" meaning "fellowship of relations or feelings"
  - Derived from "communis"—"shared by all or many"
    - "Con"—"together" + "munis"—"service"
- By 1400, in English, came to mean "a society of persons having common interests"
- Other associations include coming together for the "common good", "in service of the common entity or the group"


11

## Strengths-- and Risks-- of Communities






- Whole greater than sum of its parts
- Individuals supported by the group
- Group together serves a greater purpose

Inclusion



Exclusion



- Tribalism, isolationism, fragmentation
- 'Othering' those not fitting in
- Fixed, narrow world-view

This world of ours... must avoid becoming a community of dreadful fear and hate, and be, instead, a proud confederation of mutual trust and respect.

Dwight D. Eisenhower

12

## Why “Restoring”?

Post-COVID:

- Change in Societal Cohesion
- Less Engagement & Greater Isolation
- Shift toward Communities as Camps
- Shifting Values



*RESTORE “SERVICE” & “SUPPORT” TO THE MEANING OF OUR COMMUNITY*

13

## What You’re Saying You Value About Being a Part of CSC Community

- Your colleagues:** Their intelligence, dedication, creativity & interest in innovation, relationships & teamwork, personal connection & friendships
- Our shared work:** Balance of applied & basic science, mission driven, many disciplines working together, bringing research & practice together, putting patients & families first
- Our work on culture and climate:** The emphasis on respect, inclusiveness, constructive curiosity, & flexible work schedules
- Being a part of Yale:** Affording a broad network, connections, & intellectual diversity

14



### What You Identify as Challenges to Our Community Cohesion

- Divides across our missions with difficulty to know what others are doing
- Difficulty connecting with others especially when primarily virtual
- Siloed/fractured into groups
- **Feeling disengaged** (? Symptom of first three)

15

## Thriving (and Growing) as a Healthy Community

Relearn how to “be together”

Intentionally come together more often in-person

Provide varied and planned opportunities for learning about each others’ work

Balance what is good for the group and what is good for the individual

16



## Looking Ahead 2024-2025

- Welcoming new fellows, staff, & faculty
- Strategic Thinking & Planning
- Goals for the New Academic Year
  - Climate and Culture
  - Education & Professional Development
  - Research
  - Clinical Services
- Sustaining a Community for the Years Ahead...

17

### New Haven Track CAP Fellows



**Alexandra Desir, MD**  
**Med School:** Frank H. Netter MD School of Medicine at Quinnipiac University  
**Residency:** Zucker School of Medicine Hofstra/Northwell at Zucker Hillside Hospital PGY3



**Alayna Freeman, MD**  
**Med School:** Uniformed Services University F. Edward Hebert School of Medicine  
**Residency:** University of Texas Health at San Antonio PGY3



**Richard Gomez, MD**  
**Med School:** Loyola University Chicago Stritch School of Medicine  
**Residency:** New York Medical College/Metropolitan Hospital PGY3



**Alero Mayuku-Dore, MBBS**  
**Med School:** University of Ilorin College of Health Sciences (Nigeria)  
**Residency:** St Barnabas Hospital PGY3

### Solnit South Track CAP Fellows



**Savion Smith, MD**  
**Med School:** University of Arizona College of Medicine  
**Residency:** University of Arizona College of Medicine PGY3



**Ulunna Natalie Umesi, MD, MBA**  
**Med School:** Medical University of the Americas (Nevis)  
**Residency:** Brookdale University Hospital Medical Center PGY3



**Richard Zhang, MD, MA**  
**Med School:** Sidney Kimmel Medical College at Thomas Jefferson University  
**Residency:** University of Connecticut PGY3

## Child Study Center Incoming Fellows 2024

### Social Work Fellows



**Phoebe Josephson, MSW**  
 Silberman School of Social Work at Hunter College



**Hector Zaragoza, MSW**  
 Portland State University of Social Work

### Psychology Fellows



**Anthony Cifre, MA, MS**  
 Pediatric University of Houston



**Elizabeth DeLucia, MS**  
 Autism Virginia Tech University



**Michael B. Hager, MA**  
 Early Child New School for Social Research

### Solnit Integrated Residents



**Faigy Mandelbaum, MA**  
 Trauma Hofstra University



**Rachel Hennein, MD, PhD**  
 Med School: Yale School of Medicine



**Eric Zheng, MD, PhD**  
 Med School: Weill Cornell Medicine

18

Master's Prepared Interns



Maurice Evans  
Southern CT State  
University



Fanta Faro  
Simmons University



Lidiane Fernandes  
Southern CT State  
University



Retta Laumann  
Virginia Commonwealth  
University



Antuanett Ortiz  
University of Bridgeport



Iryiana Rivera  
University of Connecticut



Dessa Shepherd  
Long Island  
University

Child Study Center Incoming Intern and Practicum Students 2024

Psychology Practicum Students



Lillian Blinhard, MA  
University of Connecticut



Alexandria Crawford, MA  
University of Connecticut



Jessica Duda, MS  
Yale University



Alison Kelly  
Fordham University



Kimmia Lyon  
University of Connecticut



Anna Kilbride  
Rutgers University



Sabrina Danard, RN  
Yale University

APRN

Research Training Program in Childhood Neuropsychiatric Disorders T32

M. Crowley & M. Bloch Pls



Sarah Abdallah

Entering Trainees  
for 2024  
(Year 40)



Mentor:  
Tom Fernandez



Andrew Sheldon



Mentor:  
Al Powers

## Yale-UCL Masters Program (2024-2025)

Helena Rutherford, Ph.D.

Joining us from: China, UK,  
Korea, USA, Greece, Japan,  
& Hong Kong

21

## 48 Postgraduate and Postdoctoral Trainees (2023-24)

Chrysie Alexiou	María Alejandra Gutiérrez	Faigy Mandelbaum
Tatiana Allan	Michael B. Hager	Daniel James McGlade
Zoe Beketova	Maria Hands Ruz	Jacob Pohaku Momsen
Brianna Estelle Cairney	Elizabeth Hentschel	Abhiram Girish Natu
Casey Marie Carrow	Maisha Hossain	Kezhu Niu
Satvika Ranganath Char	Zoe Angel Howell	Isabel Grace Rodden
Karen Chen	Stella Jackman-Ryan	Rebekah M.
Yulan Chen	Phoebe Josephson	Rodriguez-Boerwinkle
Eleni Christofilea	Selin Kelly	Yuria Sawada
Anthony Ballachie Cifre	Justine Krum	Emmanuel A. Scaria
Elizabeth A. DeLucia	Jocelyn Emily Lamore	Emma Johanna Simons
Hanwen Deng	Keren N. Lebrón Ramos	Gladys Venegas
Sara Nicole Eberle	Xiaoyuan Li	Po-Kai Wang
Naghham Farah	Lan Luo	Tian Xia
Hannah Catherine Ferguson	Cate MacDonald	Kexuan Yu
Emilio Alexander Gray	Maria Jose Macias Zuniga	Hector Zaragoza Valentin
		Kangxin Zhang

22

# New Faculty



**Christine Cha, Ph.D.**






23

# Additional New Faculty (2023-2024)

### PEDIATRIC PSYCHOLOGY



Caitlyn Loucas, Ph.D.



Cara Tomaso, Ph.D.



Carla Andrews, Psy.D.



Tamiqve Ridgard Peters, PhD



Jackie Britt-Friedman, PsyD

### INSTRUCTOR



Kashala Smith-Tavari, MS  
CCC-SLP

### SOCIAL WORK, COUNSELING, & FAMILY THERAPY



Brandon Israel, LPC-A



Mansa Laporte, LMSW



Julia Redman, LMFT



Nick Vecchiarelli, LPC



Nikime Headley, LMSW

### ASSOCIATE RESEARCH SCIENTIST



Alexandre Jourdon, Ph.D.

24



NEW STAFF 2023-24	
Maria Awwa	MOMS Project Program Administrator
Chamarr Barton	Graeco Lab RA
Alexandra Brizuela	YCEI Program Manager
Jade Greene	Gesell Program Administrator
Sandy Lee Chang	YCEI Project Manager
Jordan Linde	Sukhodolsky Lab RA
Karen Niemi	YCEI Executive Director
Amy Norback	YCEI Training Director
Polina Ovchinnikova	Data Manager
Sophia Selino	YCEI RA
Nihal Singh	Chawarska Lab RA
Gabriela Tapia	Family Support Services Clinical Asst

25

## Faculty Transitions 2023-2024



Jessica Hoffman, Ph.D.

**ARS to Assistant Professor**



Chris Cipriano, Ph.D., MEd      Nancy Close, Ph.D.

**PROMOTION TO ASSOCIATE PROFESSOR**



Michael Bloch, MD

**PROMOTION TO PROFESSOR**

26

## Further Faculty Transitions 2023-2024



Angelina Verneti, Ph.D.

**ARS to RS**



David Lewkowicz,  
Ph.D.



Suzanne Macari,  
Ph.D.

**PROMOTION TO  
SENIOR RESEARCH SCIENTIST**



Sam Mehr, Ph.D.



Pasco Fearon, Ph.D.

**ADJUNCT PROFESSOR  
PROMOTION**

27

## New Roles 2023-2024



Julie Wolf, Ph.D.  
Vice-chair of Professional  
Development

*Also, initiated a new process for  
appointing Vice-Chairs*



Melissa Dettmer, PMP  
IBO Senior Director of Finance  
and Administration



Beth L. Heinz, MHA, MSW  
Senior VP, YNHCH

28

## Retirements 2023-2024



Fred Volkmar, MD

Celebrating October 25, 2024  
with afternoon seminar



Joseph Woolston, MD

Celebration June 13, 2024



Belinda E. Oliver, MS

Celebration September 5, 2024



Kay Lamy  
Winchester One  
Celebration

September 6, 2024

29



Holding Members of Our  
Community in Mind

30

Looking Ahead 2024-2025

- Welcoming new fellows, staff, & faculty
- **Strategic Thinking & Planning**
- Goals for the New Year
  - Climate and Culture
  - Education & Professional Development
  - Research
  - Clinical Services
- Sustaining a Community for the Years Ahead...

31

Why Strategy?

Thoughtfully consider the future shape of the department for those just joining us now & those who will come later, that is, for **our community**



32



## Thinking Strategically

- Anticipate/imagine where a field is going
- Analyze trends
- Take a big picture view & imagine possibilities
- Embrace change as needed to achieve broader goal
- *Need both strategic and tactical thinking to move forward*



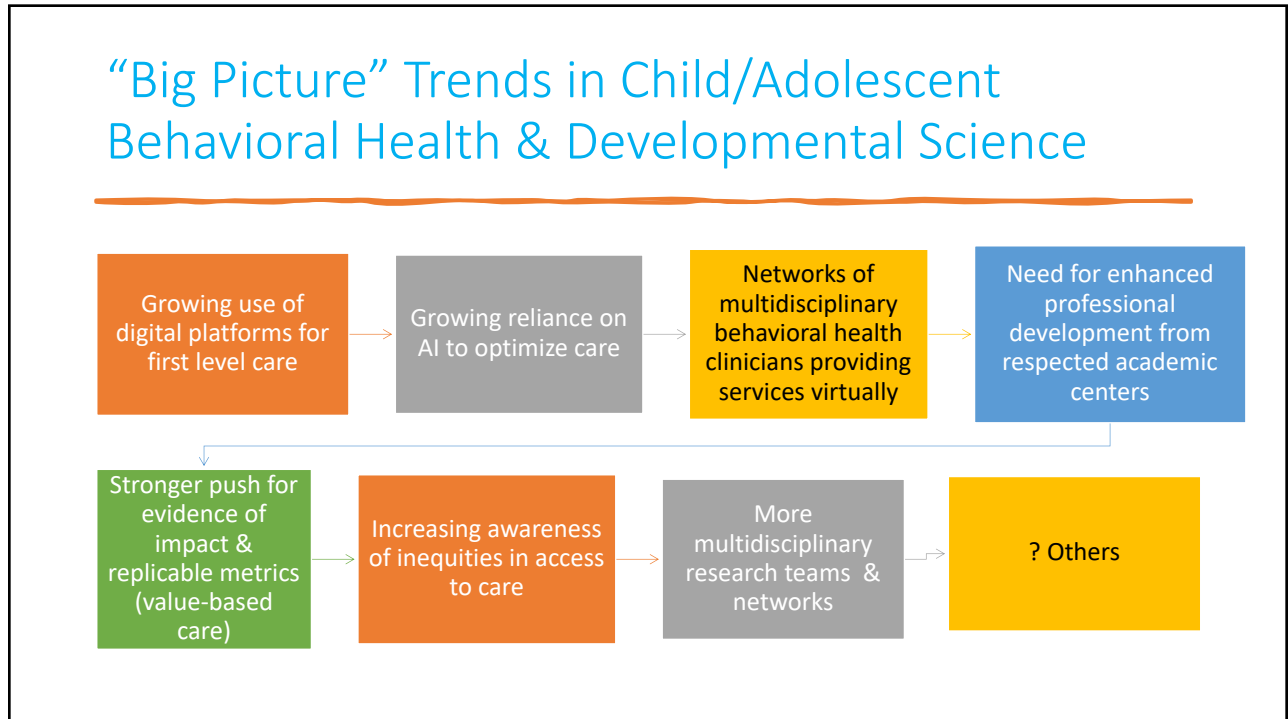
<https://www.brainzooming.com/blog/6-characteristics-of-strategic-thinking-skills>

33

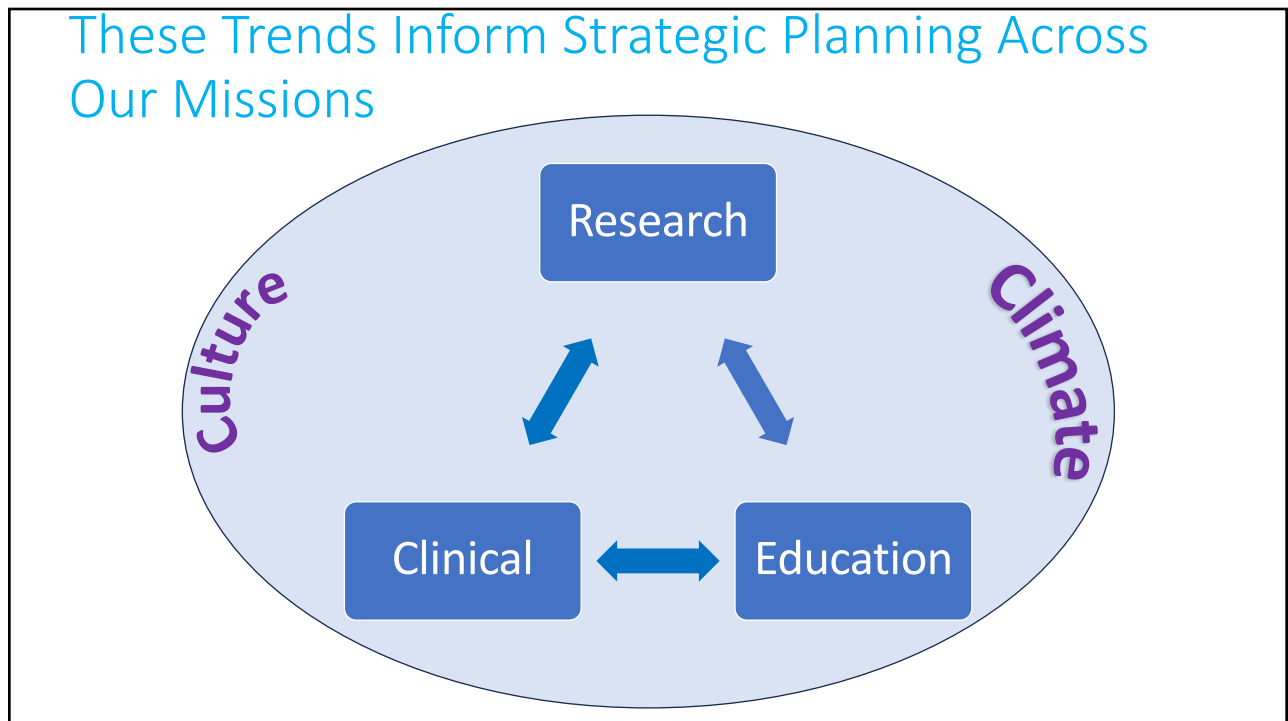
## “Classic Texts” on Thinking Strategically



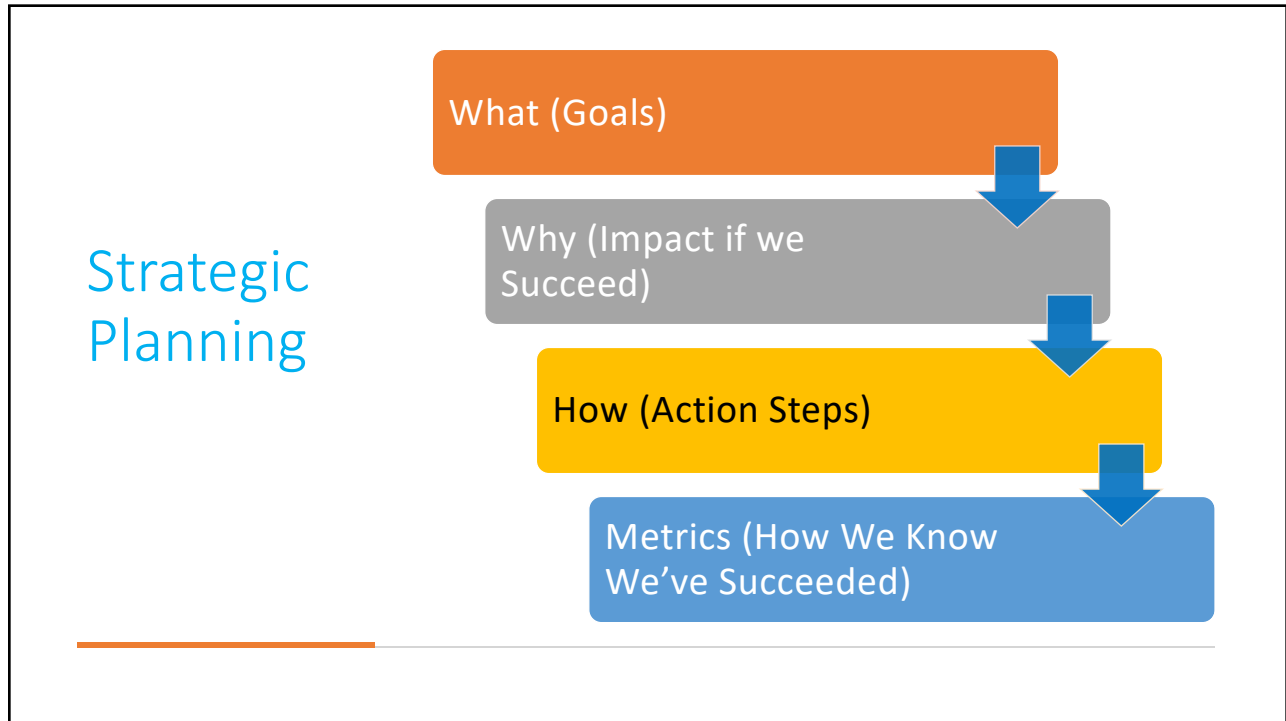
34



35



36



37

Looking Ahead  
2024-2025

- Welcoming new fellows, staff, & faculty
- Strategic Thinking & Planning
- **Goals for the New Year (And Progress to Date—Listen for “community”)**
  - Climate and Culture
  - Education & Professional Development
  - Research
  - Clinical Services
- Sustaining a Community for the Years Ahead...

38

**Climate**  
What We Perceive

**Culture**  
What We Believe

*Do our actions reflect the culture we want and the values we state?*

*Equitable, inclusive culture where everyone feels they have a place and a valued voice*

Source: CEB analysis.

**Climate and Culture**

The diagram features an iceberg with the tip above the water line and the much larger base below. The top part is labeled 'Climate' and 'What We Perceive', with a text box asking 'Do our actions reflect the culture we want and the values we state?'. The bottom part is labeled 'Culture' and 'What We Believe', with a text box stating 'Equitable, inclusive culture where everyone feels they have a place and a valued voice'. A small circular diagram in the top left shows 'Research' at the top, 'Clinical' and 'Education' at the bottom, with 'Culture' on the left and 'Climate' on the right.

39

**DEIB HIGHLIGHTS 2023-24**

Searches, Hiring & Onboarding

How to Speak Up Against Stereotypes

**OUCH!**  
THAT STEREOTYPE HURTS

Deborah Stanley-Mcauley

**SERC**  
STATE EDUCATION RESOURCE CENTER  
EQUITY | EXCELLENCE | EDUCATION

GRAND INCLUSION DIVERSITY EQUITY ROUNDS

CE Credits

Celebrating **BLACK HISTORY MONTH**

Congratulations!!! Celebrating Academic & Professional Progression  
Yale Child Study Center | October 10, 2023

**SOCIAL WORK MONTH**

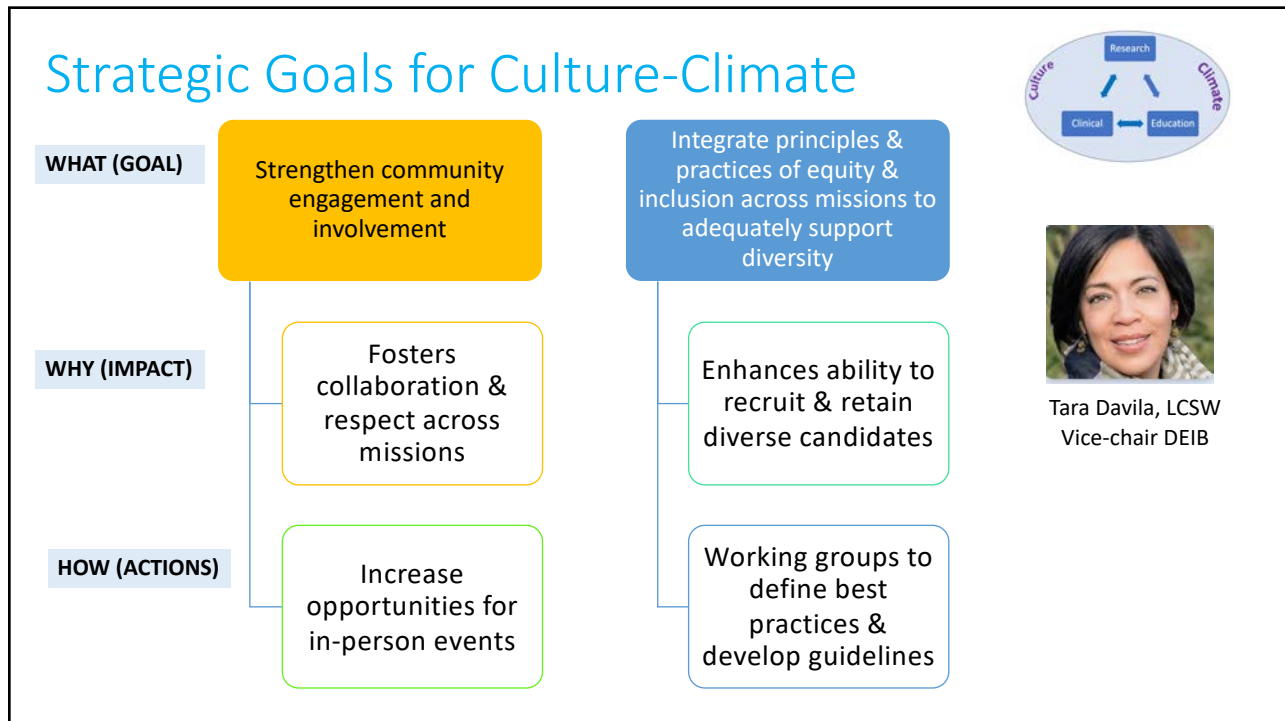
**JUNETEENTH**  
FREEDOM DAY  
JUNE 19

The collage includes various images and text: a group of people, a woman speaking, a stack of blocks with 'BELONGING INCLUSION DIVERSITY EQUITY', a graduation certificate, a 'BLACK HISTORY MONTH' banner, a 'SOCIAL WORK MONTH' banner, and a 'JUNETEENTH' banner. The SERC logo is also present.

40







43

## Viola Bernard Fund For Innovation in Mental Health Care (2024)



Laura Gallardo,  
LMSW



Kristina Washington, PhD



Isaac Johnson,  
MD

Viola Bernard Social Justice and Health Equity Fellows



Dr. Donald Warne, Johns Hopkins Center for Indigenous Health  
March 25, 2025



Dr. John Pachankis, David R Kessler Professor & Director of Yales LGBTQ Mental Health Initiative  
Dec 3, 2024

Viola Bernard Lecture Series



**Viola Bernard Award**

Encouraging proposals focusing on health equity, social justice, and community engagement



Uche Aneni-“Bridging gaps in accessing care: A digital platform for adolescents on the waitlist for mental health services”



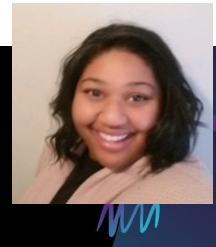
Amanda Lowell-“Adaptation of an evidence-based parenting intervention: How should we support the intersectional experiences of Black & Latina mothers with Opioid Use Disorder?”

44

## Community Building- Our Values

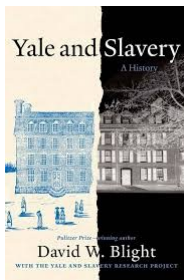


Continuation of restorative practices & community-building work with Yasmeen Davis: Info sessions 9/13 & 9/27 previewing sessions for Oct, Dec, & Jan

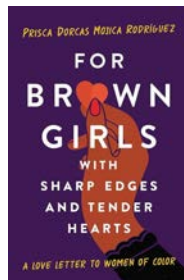


45

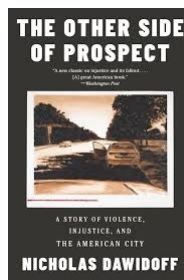
## New Lecture Series- Perspectives for Inclusion



Sept 24, 2024



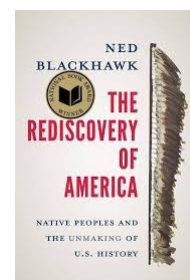
Oct. 4, 2024  
Empowering Latine Faculty & Staff @ Yale



TBD



May 13, 2025



TBD

46

# Education & Professional Development



## Examples of Accomplishments and Ongoing Work

-  Appointed Vice-Chair of Professional Development
-  Recruiting diverse groups of fellows (and interns/practicum students)
-  Working with fellows to improve climate of training programs
-  Professional Development on Science of Reading (with Global Literacy Hub and Scholastic Collaborative)
-  Official Training Site for REACH (behavioral health training for pediatricians)
-  Workshops for community on state of art research to practice (e.g., Chawarska, Lebowitz, Silverman, and others)



Michele Goyette-Ewing



Dorothy Stubbe



Michael Bloch



Carolina Parrott

Training Directors

47

### May 2024 Mental Health Month

#### Child Mental Health: Fostering Wellness in Children

Pros4Peers, a program between YSM's Office of Academic & Professional Development (OAPD) and the Chief Wellness Officer (CWO) from the YSM-YNHHS Aligned Clinician Enterprise, was designed to exchange professional expertise among Yale's medical community, improve well-being, foster a caring and connected culture, and strengthen a sense of belonging among faculty, staff, and students across the health system.

It's latest offering, Child Mental Health: Fostering Wellness in Children, a four-part webinar series exploring new insights and the latest research findings with faculty from the Yale Child Study Center (YCS), launched in May, in recognition of Mental Health Awareness Month. To view the webinars, click here: [\(link to Read More\)](#).

## Getting the Word Out

48



## YSM Student Activities at the YCSC



Andres Martin, MD, PhD

YSM Year	Activity	Faculty
1	Across the Life Cycle course (9 hours, classroom)	Jessie Mayo, Pam Ventola, Andrés Martin
1+	Donald J. Cohen Mentorship Program (since 2002)  Yearly reunion (~150 students , 13 schools) University of Illinois Chicago '24, Harvard '25	Linda Drozdowicz, Jim Leckman, Andrés Martin
2-3	Core clerkship in psychiatry (Winchester 1, 3 weeks fulltime)	Suman Baddam, José Páez, Andrés Martin
4+	Subinternship in child psychiatry (W1, 4 weeks fulltime, more patient responsibility)	Suman Baddam, José Páez, Andrés Martin
4+	Thesis requirement fulfilled at YCSC	Various
-	Melvin Lewis Award for CSC trainee most notable in medical student education	Yearly

49

## Strategic Goals for Professional Development & Education

**WHAT (GOAL)** Establish the CSC as a resource for ongoing learning and professional development in child & adolescent behavioral health

Ensure common "education signature" across CSC training programs

**WHY (IMPACT)** Disseminates state of art expertise and drives standards of care in field

Informs competency standards for the field & enhances fellow recruitment

**HOW (ACTIONS)** Develop Professional Development "Brand" including standard registration, presentation materials, & evaluation of courses

Increase & formalize mentorship & professional development opportunities for all trainees & faculty



Julie Wolf, Ph.D.  
Vice-chair of Professional Development



### Alignment with YSM Goals

- Faculty Participation in the Educational Mission
- Student Engagement in Attaining Competency

50

## Upcoming Professional Development Events



Yale Child Study Center Leadership Development Series  
Designed by Skyeer Resnik, 2023

**2<sup>nd</sup> year of CSC Lecture Series**



**Peer Coaching, now in collaboration with Pediatrics Starts September 9, 2024**

On Leadership  
#ELIS



**CSC Leadership Blog**  
<https://medicine.yale.edu/childstudy/news/newsletters-blogs/on-leadership/>



**Chyrell Bellamy, MSW, PhD**  
December 2024



**Catherine Sandler, PhD**  
April 2025

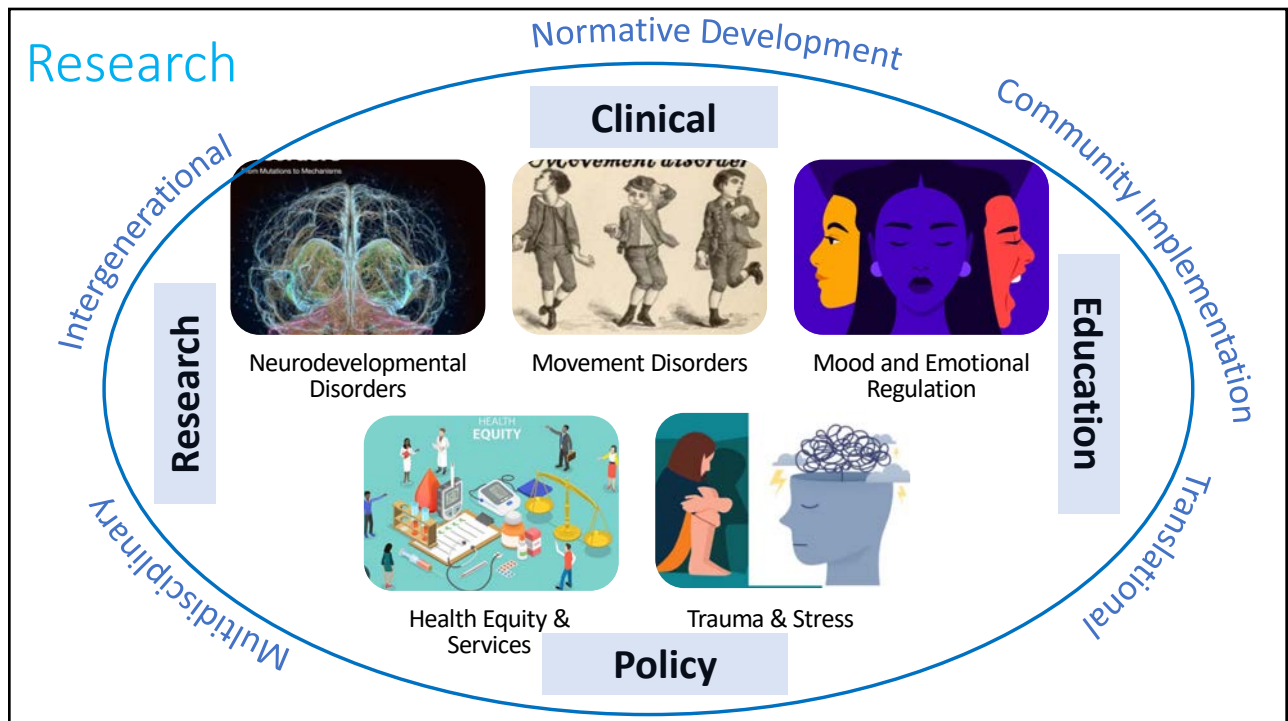


**Four session workshop to learn coaching skills for academic medicine; with Pediatrics in spring**



**Daryn David, Ph.D.**

51



52

# Research Mission

## Progress in 2023-2024



Tom Fernandez, MD.  
Vice-chair of Research

-  Bringing researchers together for shared goals
-  Regular Research Internal Communication
-  Regular research in progress sessions
-  Regular seminars for postdocs
-  Cross-talk sessions in faculty meetings

53

# Shared Recruitment Resource



Home / Research / Participate in Research

FAQs for Parents All Studies & Trials

## Participate in Research

Yale Child Study Center (YCSC) research teams collaborate to investigate the causes, consequences, and prevention of developmental and behavioral health needs in children, adolescents, and their families. YCSC is actively growing in many areas from basic research in the genetic and neurobiological basis of childhood psychiatric disorders to training clinicians around the world in evidence-based mental health service delivery.

Keep reading for a list of the ongoing research efforts at the Yale Child Study Center to find out how you can participate.



54

## Departmental Research Support

New CSC Postdoctoral Scholar Travel Award



Soraya Scuderi, PhD



Karim Ibrahim, PhD

CSC Trainee Pilot Research Award



Tom Fernandez, MD.

YCSC Faculty Development Award with increased funding (Up to 9 Professional Development & 6 Pilot Rsch awards annually)



Helena Rutherford, Ph.D.

55

## Research Goals

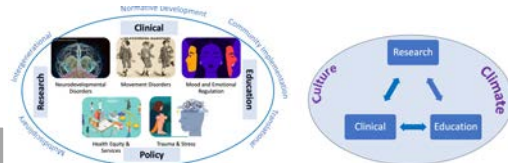
Grow capacity for clinical trials

Advance data science & technology integration (including AI applications)

Strengthen research in developmental biology of early life stress

Broaden research in neurodevelopmental disorders

Expand focus on health equity in behavioral health intervention



### Alignment with YSM Goals

- Focus Areas: Translational Medicine / Clinical Trials , Developmental Brain Disorders, Health Equity Research
- Cross-Cutting Themes: Data Science, Team Science, Support for Graduate Students and Post-Docs

56

## Upcoming Research Activities



Ongoing Research Community Meetings



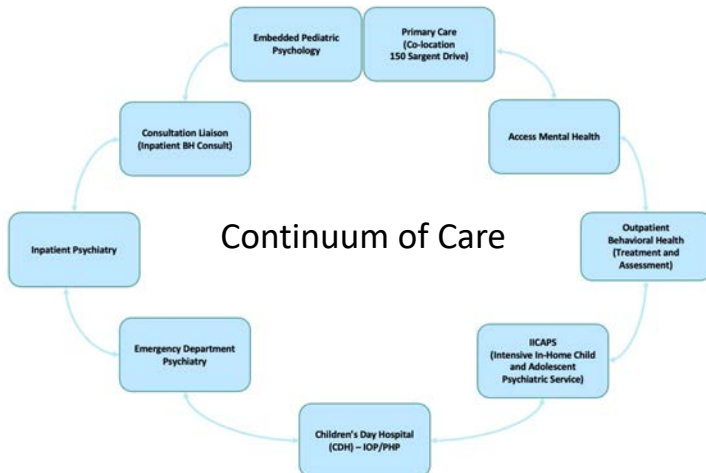
YSCS Research Day with research presentation from faculty and trainees (TBD)



Improved clinical trial eligibility matching using AI

57

## Clinical Mission



Yann Poncin, MD



Michele Goyette-Ewing, PhD



Erin Warnick, PhD

CLINICAL VICE CHAIRS

60,000+ Scheduled Appointments

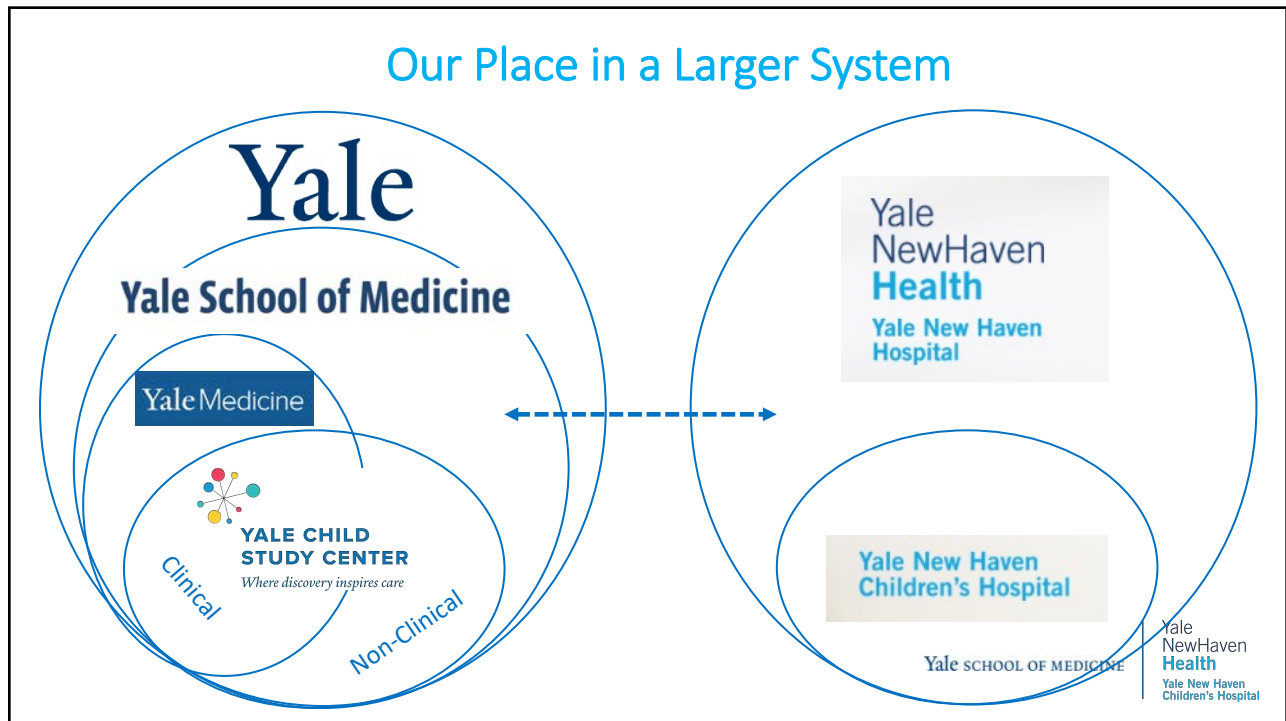
~3000 Youth and Families Served Annually

Thank the People Who Care



58





59

<https://ynhhs.yale.edu>

## Yale New Haven Health System and Yale School of Medicine Alignment

[Twitter](#) [Facebook](#) [LinkedIn](#) [Email](#) [Print](#)

### Working Together

For nearly 60 years, Yale New Haven Health System (YNHHS) and Yale School of Medicine (YSM) have affiliated with one another to provide the highest quality care to people in the Northeast region and around the world.

Both organizations have grown significantly, advancing our knowledge, innovation, and capabilities along the way. With advancement comes opportunity to do even more for the communities we serve by closely aligning our operations, care delivery, and strategic investments. An enhanced partnership will allow us to grow more effectively and flourish in today's constantly changing and challenging health care environment.



60

## Changes in YSM-Yale New Haven Health System

---



New funds flow approach supporting YSM clinical care by health system



Clinically integrated network (CIN) of practices between Yale Medicine & YNHHS



Joint strategic planning



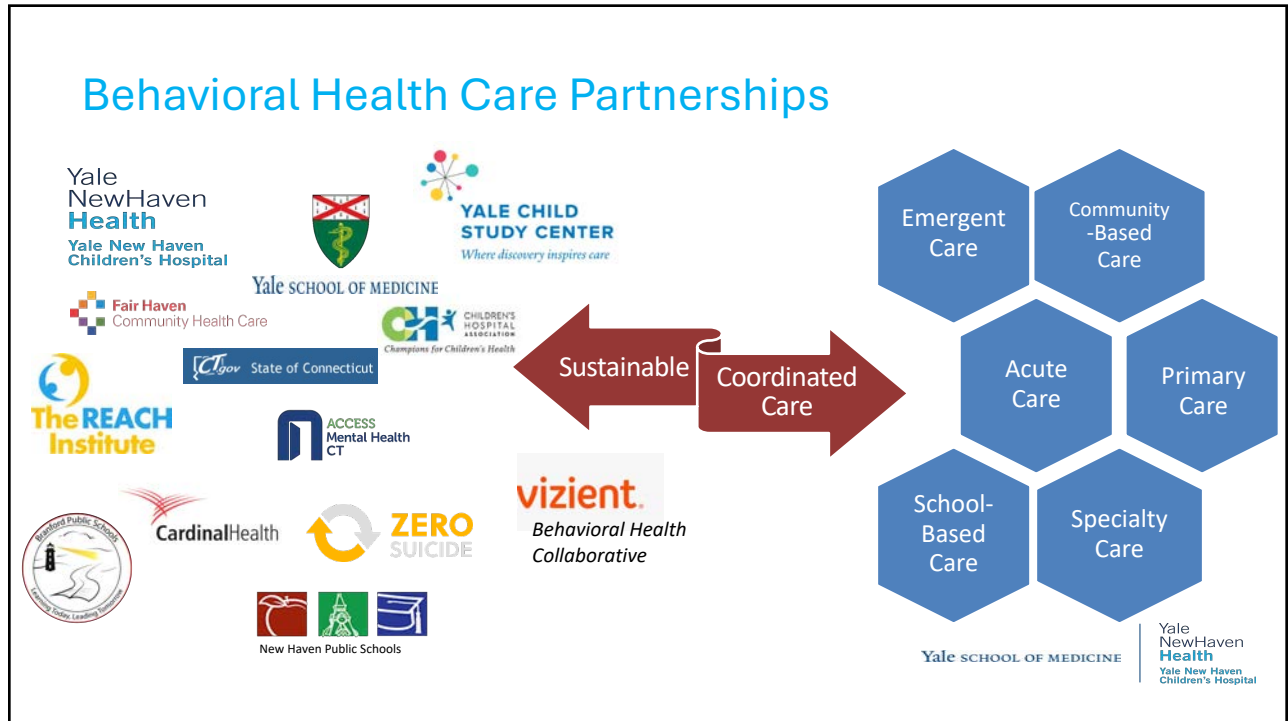
Access 365 initiative

61

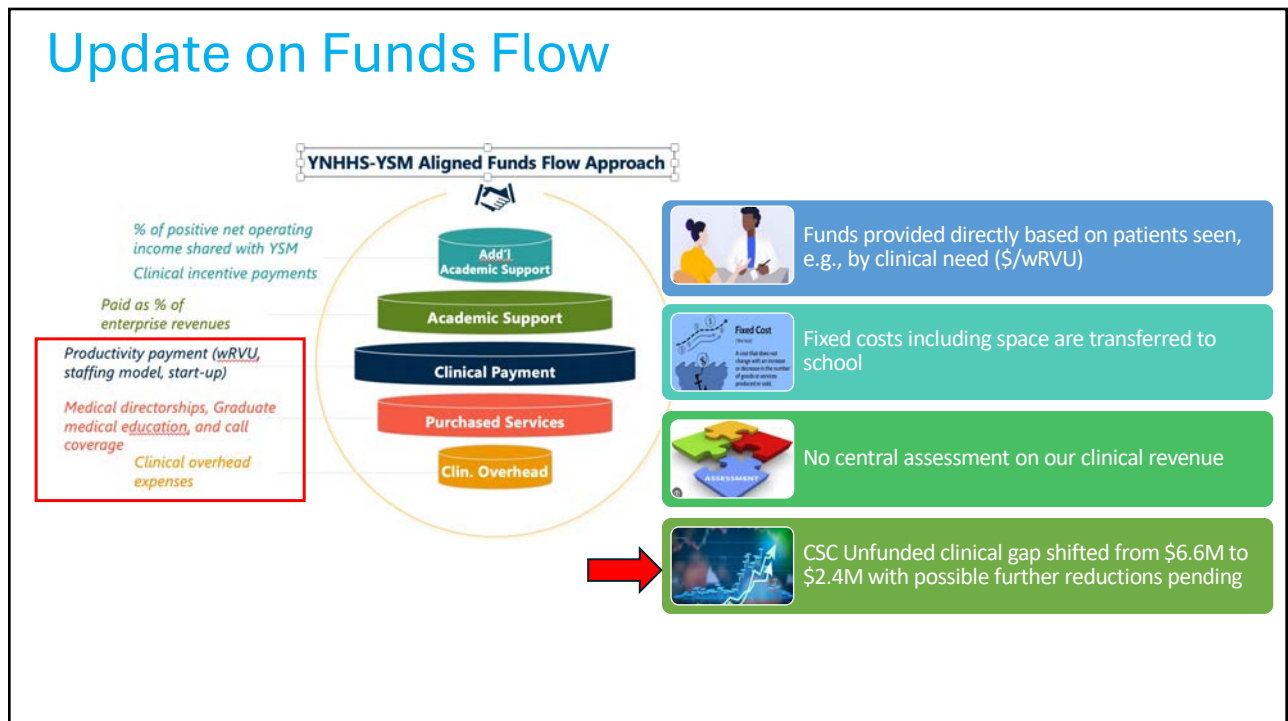


## Alignment Between YSM and YNHHS

62

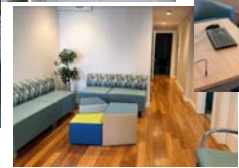
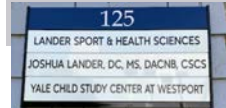


63



64

## New Westport Office Opening October 2024



Jackie Britt-Friedman, PsyD



Tamique Ridgard Peters, PhD



Ayo Ayobello, MD

65

## Growing Yale Pediatric Psychology Program

- **Diabetes**
- **Gender Clinic**
- **Gastroenterology (GI)**
- **Hematology/Oncology**
- **Inpatient Consultation/Liaison Services**
- **Neurology**
- **Orthopedic Surgery**
- **Primary Care**
  - Fully embedded in Fair Haven/YNHH/Cornell Scott Primary Care Clinic (NHPCC)
- **Sleep Medicine**
- **More to come...**



Yale Child Study Center

Yale SCHOOL OF MEDICINE

Yale  
NewHaven  
Health  
Yale New Haven  
Children's Hospital

66

## Pediatric Psychology Program – 2024 Recruits to Date



Caitlyn Loucas, PhD  
Hematology/Oncology



Carla Andrews, PsyD  
Primary Care



Cara Tomaso, PhD  
Orthopedic Surgery



Aarti Patel, PsyD  
Gastroenterology (h  
December)

Open Search for craniofacial/plastic surgery service

Yale Child Study Center

Yale SCHOOL OF MEDICINE

Yale  
NewHaven  
Health  
Yale New Haven  
Children's Hospital

67

## Urgent Crisis Center

**Urgent response for children's mental health crises.**

- Thoughts of suicide or self-injury (that doesn't require medical attention)
- Feelings of depression, anxiety or hopelessness
- Out-of-control behaviors
- Substance misuse
- Any mental health crisis



**No referral needed**

At the four walk-in **Urgent Crisis Centers (UCC)** for children and adolescents ages 18 and under, trained staff will:

- ✓ De-escalate the crisis
- ✓ Complete an evaluation
- ✓ Connect you to services

### Urgent Crisis Centers

**The Village**  
Where real change happens  
1680 Albany Avenue, Hartford, CT 06105  
(860) 297-0520  
thevillage.org/UCC

**Child & Family Agency**  
255 Hampstead St, New London, CT 06320  
(860) 437-4550  
childandfamilyagency.org/urgent-crisis-centre

**Wellmore**  
141 East Main Street, Waterbury, CT 06702  
(203) 580-4298  
wellmore.org/urgent-crisis-center

**YaleNewHavenHealth**  
Yale New Haven Children's Hospital  
20 York Street, New Haven, CT 06510  
(203) 688-4242  
ynhh.org/childrens-hospital/services/emergency-services

- Funding from state & collaboration with DCF
- Remodeling new space in proximity to current emergency department
- Physical space completed early 2025 with some programming already in place
- Dedicated behavioral health space allowing interventions to start in ED
- Addressing challenge of increasing boarding time in ED

<b>Boards</b>	183	174	44	26	27	14	47	16
<b>Boarder Hrs</b>	6,004	7,073	1,835	975	622	373	2,615	653

68



## Clinical Goals for 2024--



Serve	Serve as the child and adolescent behavioral health provider across the YNHH delivery network
Improve	Improve the access to behavioral health services across the delivery network for children, adolescents and their families
Ensure	Ensure the sustainability of child and adolescent behavioral health services
Strengthen	Strengthen clinical-research integration

69

## Goal Alignment with YSM & YNHHS



Serve	Serve as the child and adolescent behavioral health provider across the delivery network
Improve	Improve the access to behavioral health services across the delivery network for children, adolescents and their families
Ensure	Ensure the sustainability of child and adolescent behavioral health services
Strengthen	Strengthen clinical-research integration

- Build **destination programs** that command national recognition, progress the field, and attract patients
- Provide **access to the right service**, at the right time, in the right place
- Deliver exceptional quality and value by developing an evidence-based, **world-class care signature** across the care continuum
- Harness power of **clinical and translational** research enterprise to translate the latest discoveries into practice
- Foster an environment of **continuous learning**
- Translational Medicine / **Clinical Trials**

70


## Stay Tuned .....

- Current Workgroups**
  - Enhance Professional Development
  - Revisit Clinical Incentive Plan
- Future Workgroups**
  - Better Integration of Hospital & Outpatient Services
  - Improving Rsch-Clinical Interface
- Engaging Broader Community**
  - **Open House September 19th 9:30 to 11:30 at 350 George**


71

## Behind It All—Communications!

- Weekly calendar/events messages & GR announcements
- Expanded SharePoint communications sites including virtual bulletin board: internal announcements & weekly e-mail digests
- YSCS Connections: monthly external newsletter
- CSC Insider: quarterly internal newsletter—people-focused with new additions, community spotlights, awards
- Annual “year in review” in January
- Framing workshops & developing hub
- Enhanced resources on intranet & SharePoint
- Comms ambassadors to improve information flow
- Increased social media presence (FB, IG, LinkedIn, X)
- Ongoing collaboration & connections with YSM Comms & OPAC
- Strategic planning: internal & external communications goals




Crista Marchesseault, Vice-Chair Communications



June 26, 2024  
YSCS Connections  
Featuring updates, news you can use, events, and more from the Yale Child Study Centre.

Website “refresh” (reorganized & updated content; regularly updated newsfeed)

New study recruitment site for families & practitioners



Ongoing refinement

72

## Looking Ahead 2024-2025

- Welcoming new fellows, staff, & faculty
- Strategic Thinking & Planning
- Goals for the New Year (And Progress to Date)
  - Climate and Culture
  - Education & Professional Development
  - Research
  - Clinical Services
- Sustaining a Community for the Years Ahead...

73

## Restoring our Community

Relearning how to “be together”

Intentionally coming together more often in-person

Varied and planned opportunities for learning about each others’ work

Balancing what is good for the group and what is good for the individual

74

## Nurturing & Supporting Engagement

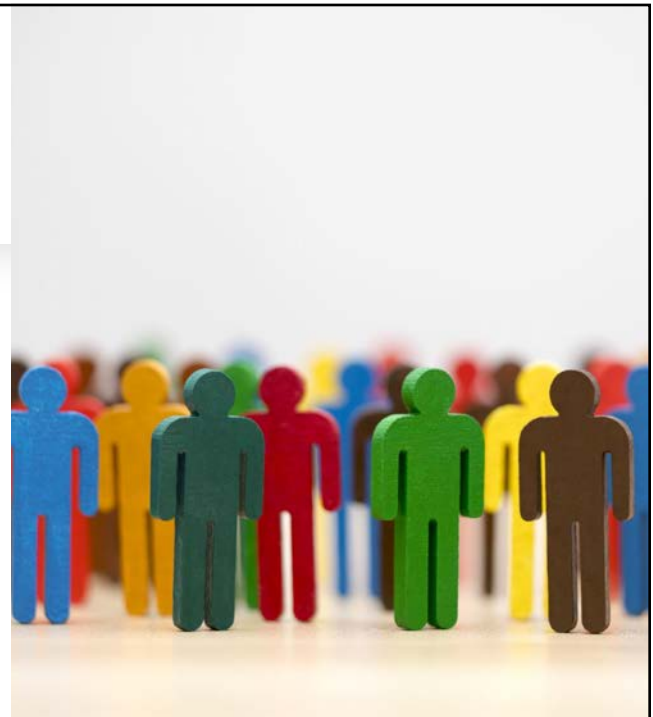
- Have at least half of our meetings in person
- Continue drop-in opportunities for in-person getting together (e.g., bagel breakfasts, community breaks, jamming...)
- Come together to help others (restoring “service” to “community”)



75

*There is immense power when a group of people with similar interests gets together to work toward the same goals.*

- Idowu Koyenikan



76