

August 7, 2015

Announcements

5th Annual Closer to Free Ride

It's hard to believe that the 5th anniversary of our Closer to Free Ride is quickly approaching on Saturday, September 12th. Bigger and more successful each year, 2015 will prove to be a great anniversary year for both Smilow Cancer Hospital and our ride! Please consider joining us, either as a rider or a volunteer. If you cannot participate, perhaps you will choose to support one of your colleagues in their fundraising challenge. Remember, every dollar raised through the Closer to Free Ride supports patient care at Smilow Cancer Hospital and cancer research at Yale Cancer Center. [Click here](#) to learn what the 2014 ride supported.



Now is the perfect time to stop thinking about registering and actually join us as a rider. Registering now will give you plenty of time to reach your fundraising minimum and get those extra training miles in to ride 25, 62.5 or 100 miles. [Click here to join us now! >>](#)

We're also searching for massage, medical and traffic & safety volunteers to make the day perfect for our riders. Click below to register to volunteer and thank you in advance for sharing your time. [Register to volunteer >>](#)

Personalized Medicine Symposium

from the desk of

Thomas J. Lynch, Jr., MD

Director, Yale Cancer Center

Physician-in-Chief Smilow Cancer

Hospital at Yale-New Haven



Recent News

Read recent articles featuring experts from Yale Cancer Center [News Center >>](#)

LATEST ARTICLES:



Dr. Chagpar on Sequencing Therapies for HER2-Positive Breast Cancer [Read More >>](#)

Join Drs. Roy Herbst and Patricia LoRusso as they host a Personalized Medicine Approach to Cancer Care Symposium in honor of Smilow Cancer Hospital's 5th Anniversary on September 11 featuring presentations from each of our Clinical Programs at Smilow Cancer Hospital.

[Register online >>](#)



5th Anniversary Symposium
A Personalized Medicine Approach to Cancer Care

Friday, September 11, 2015
Yale West Campus Conference Center
8:00am - 5:00pm

Symposium Co-Chairs:
Roy S. Herbst, MD, PhD and Patricia M. LoRusso, DO

A 5th Anniversary Symposium: A Personalized Medicine Approach to Cancer Care will celebrate our 4th Pillar: Personalized Cancer Medicine and will feature presentations by our Translational Working Groups and a keynote lecture by Dr. Lillian Siu, Director of the Phase I Program and Co-Director of the Robert and Maggie Bras and Family Drug Development Program at Princess Margaret Hospital.

Dr. Lillian Siu has extensive experience with a personalized approach to early-phase clinical trials and is a leader in head and neck cancer. She has jointly spear-headed the extensive Whole Genome Sequencing approach to drug development that has been a large part of the Princess Margaret clinical program and has been adopted extensively by Cancer Centers throughout Canada.

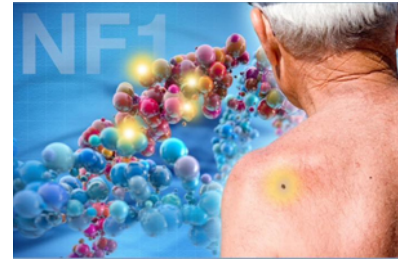
For more information, or to RSVP, please contact Angela Maria Malerba.

Notables

Dr. Gary Kupfer, Chief of Pediatric Hematology and Oncology, recently returned from a trip to the **Republic of Georgia**, where he consulted on the creation and building of pediatric oncology infrastructure in the country. He and his colleagues from Harvard University gave feedback and program recommendations on standards of care, infrastructure, and expertise.

Research in the News



Yale study identifies 'major player' in skin cancer genes

[Read More >>](#)



Five Yale researchers awarded grants to study women's reproductive cancers

[Read More >>](#)

Join Yale Cancer Center on Facebook

Like us on Facebook 

LATEST POSTS:

Thanks to a \$100K grant from the Terri Brodeur Breast Cancer Foundation, a Yale Cancer Center team led by breast oncologist and researcher Erin Hofstatter, MD, is investigating a possible cause of breast cancer in young women.

Since breast cancer primarily occurs in older women, the team is exploring whether breast cancer in younger women is a result of premature aging in breast tissue.

Yale study identifies 'major player' in skin cancer genes

A multidisciplinary team at Yale, led by Yale Cancer Center members, has defined a subgroup of genetic mutations that are present in a significant number of melanoma skin cancer cases. Their findings shed light on an important mutation in this deadly disease, and may lead to more targeted anti-cancer therapies.

The study was published July 27 in Nature Genetics. The role of mutations in numerous genes and genomic changes in the development of melanoma - a skin cancer with over 70,000 new cases reported in the United States each year - is well established and continues to be the focus of intense research. Yet in approximately 30% of melanoma cases the genetic abnormalities are unclear.

The researchers confirmed that a gene known as NF1 is a "major player" in the development of skin cancer. "The key finding is that roughly 45% of melanomas that do not harbor the known BRAF or NRAS mutations display loss of NF1 function, which leads to activation of the same cancer-causing pathway," said Michael Krauthammer, MD, Associate Professor of Pathology and the study's corresponding author. [Read More >>](#)

Employee Profile: Team "Live Positive"



Team 'Live Positive,' led by captain Maureen Raucci, RN, Nurse Manager for Inpatient Medical Oncology at Smilow, will once again participate in the Closer to Free bike ride on September 12th. This will be the team's fifth ride together and they have consistently proven to be among the top fundraising teams, raising the most money of any team last



[Read More >>](#)

While at Smilow Cancer Hospital, don't forget to stop by the Patient and Family Resource Center on the first floor to access the latest cancer information and supportive care resources, including opportunities for participation in programs at Smilow and at our Care Centers, and in the local community.



[Read More >>](#)

Read part two in the very personal and thoughtful series from one of our patients who was diagnosed with breast cancer at the age of 31.



[Read More >>](#)

Tune in to Yale Cancer Center Answers today at 6 PM on @WNPR to welcome our new co-host, Dr. Susan Higgins, to the program. Dr. Higgins is an Associate Professor of Therapeutic Radiology

year. 100% of the dollars raised directly supports patient care and research at Smilow Cancer Hospital and Yale Cancer Center.

Members of team 'Live Positive' include staff from NP-12, one of the inpatient units at Smilow Cancer Hospital: Alienne Salleroli, RN, Marion Lupone, RN, Christine Wadelin, RN, Cheryl Gans, RN, Kristen Slater, RN, Lauren Keating, RN, Ginny Adler, RN, Mary Caruso, RN, Heather Piccirillo, RN, Denise Nightengale, RN, Cristina Wolfe, RN, Erica Nicolsi, RN, Susan Louis, RN, Stephanie Jonson, RN, Stacey Herens, APRN, Amanda Iuliano, PCA, Liana Braga, PCA, Alison Putney, PCA, and Katie Shapiro, PCA are just some of the dedicated riders. They see and care for patients every day that have been diagnosed with cancer. For them, the ride means something on both a personal and professional level.

"While we cannot always change the outcome for our patients, I believe we can positively impact and improve their journeys. It's wonderful to come together to provide support outside the walls of Smilow and raise money to bring us all one step Closer to Free! I tell everyone that it is my favorite day of the year," said Maureen.

The team was inspired by two close friends that were diagnosed with cancer. Team members commented, "They both lived their lives with such an energetic and uplifting spirit that we named the team 'Live Positive' in their honor."

To learn more about the Closer to Free bike ride and how you can help, visit rideclosertofree.org

To give directly to 'Live Positive' or to join the team, click [here >>](#)

Funding and Award Opportunities

AACR NextGen Grants for Transformative Cancer Research

These three-year grants of \$450,000 represent a new AACR funding initiative to stimulate highly innovative research from young investigators. Eligibility is limited to junior faculty who have held a full-time, tenure-track appointment as an assistant professor for no more than three years.

Letter of Intent Deadline: August 10, 2015

[Learn More >>](#)

Yale Lung SPORE Developmental Research Program Grants

specializing... in the care of women with breast and gynecological cancers.



[Read More >>](#)

It's a beautiful weekend to get out and train for the Closer to Free Bike Ride on September 12th!

"Participating in the Closer to Free Ride, as a cyclist and fundraiser, since its inception has enabled me to communicate to my family, friends, vendors, suppliers and associates the overwhelming good feeling this event instills in me each year."



[Read More >>](#)

Follow Yale Cancer Center on Twitter

Follow us on [twitter](#)

LATEST TWEETS:

How does @AneesChagpar's SHAVE trial address the "epidemic" of #breastcancer resurgeries? <http://wb.md/1KT7O5r> @MedscapeOnc @YaleMed @YNHH

We thank the Terri Brodeur #BreastCancer Foundation @TBBCF

To provide seed money to investigators to support studies with a strong translational component that have the potential to evolve into, or be incorporated into, a full Yale SPORE in Lung Cancer (YSILC) project. Projects of more limited scope (e.g., for smaller amounts and/or for shorter periods of time) will be at no competitive disadvantage in the review process. Projects with multi-disciplinary collaborations and promising translational research potential will get favorable scores in review. The purpose is also to generate preliminary data or evidence of collaboration for new NCI grant applications.

Application Deadline: August 14, 2015

[Learn More >>](#)

Yale Lung SPORE Career Development Award Grant

To provide support to foster the development of the next generation of lung cancer translational researchers. The aims of the CDP are to support promising early career stage lung cancer investigators and to enhance the careers of established investigators who have newly defined interests in pursuing translational research in lung cancer. The purpose is also to generate preliminary data or evidence of collaboration for new NCI grant applications.

Application Deadline: August 14, 2015

[Learn More >>](#)

Patterson Trust Fellowship Program in Clinical Research

The Robert E. Leet and Clara Guthrie Patterson Trust was established in 1980 for the advancement of medical science, particularly research "relating to human diseases, their causes and relief." Two-year fellowships of \$90,000 (\$45,000 per year) will be awarded to Applicants working in Connecticut or New Jersey.

The Patterson Trust will provide support to early-stage mentored investigators conducting clinical research with a focus on patient-oriented or translational laboratory research. The Program will help the Trust to pursue its mission by providing Applicants with the opportunity to demonstrate creativity and explore opportunities that may promote careers in clinical research. Pilot and preliminary studies are encouraged.

Application Deadline: August 14, 2015


[Learn More >>](#)


2015 Rausch Pilot Research Grant


To provide seed money to members of Yale Cancer Center (YCC) to enable investigators to engage in innovative cancer research, with the goal of facilitating new research on the fundamental causes of, or an effective cure for, cancer. We anticipate funding two to three pilot grants. Priorities for the


for supporting our research led by Dr. Erin Hofstatter


 Today we have the honor of welcoming Terri Brodeur Breast Cancer Foundation @TBBCF to Smilow. We are thankful for their generosity @YNHH

 Women who exercise during adolescence may benefit for years <http://wpo.st/EcZTO>

 Cure rates for some #breastcancers over 90%? A peek into the future with combining therapies for Her2+ @AneesChagpar <http://bit.ly/1DqX3iL>

 MT Nobody likes a cheater, especially when it leads to cancer. Cellular 'Cheaters' Give Rise to Cancer <http://nyti.ms/1JLNhEV>

 Study identifies 'major player' in #skincancer <http://bit.ly/1OwWu7J> @NatureGenet @YaleMed

 Becoming a cancer patient <http://bit.ly/1GNz5cv> via @thedayct

Closer to Free

closer to free
The fund to advance cancer research and enhance patient care

Events

August 9; 6PM
Yale Cancer Center Answers

pilot grants include studying and/or ameliorating sociodemographic disparities in cancer incidence or outcomes; the prevention and/or treatment of women's cancers, as well as neighborhood/urban or other community factors that contribute to cancer etiology. Preference will be given to research that has a high likelihood of having a demonstrable community impact in the Greater New Haven area.

Application Deadline: August 14, 2015

[Learn More >>](#)

Provocative Questions in Cancer with an Underlying HIV Infection (R01)

The purpose of this funding opportunity announcement (FOA) is to advance our understanding of the risks, development, progression, diagnosis, and treatment of malignancies observed in individuals with an underlying HIV infection or Acquired Immune Deficiency Syndrome (AIDS) through research directed at addressing one of several proposed "Provocative Questions" (PQs). These PQs are not intended to represent the full range of NCI's priorities in HIV/AIDS-related cancer research. Rather, they are meant to challenge researchers to think about and elucidate specific problems and paradoxes in key areas of AIDS-related cancer research that are deemed important but have not received sufficient attention.

Application Deadline: August 18, 2015

[Learn More >>](#)

Alliance for Cancer Gene Therapy 2015 Young Investigator Award

Alliance for Cancer Gene Therapy, Inc. (ACGT) funds research aimed at furthering the development of cell and gene therapy approaches to the treatment of cancer. To this end, ACGT offers its Young Investigator Award to qualified scientists at the Tenure Track Assistant Professor level. The overall objectives of this grant are to advance cell and gene therapy into the causes, treatment and prevention of all types of cancer by promoting development of novel and innovative studies by young investigators. The emphasis of this initiative is to promote basic and pre-clinical research approaches utilizing cells and genes as medicine. ACGT will direct its grants into areas of cell and gene therapy research that have demonstrated great promise.

Application Deadline: August 24, 2015

[Learn More >>](#)

2015-2016 Yale SPORE in Skin Cancer Developmental Research Awards

The YALE SPORE in Skin Cancer is pleased to announce the availability of DEVELOPMENTAL RESEARCH AWARDS

WNPR

A Look Inside Blood Cancers
Stephanie Halene, MD, PhD

[Read More >>](#)

August 13; 9AM

Therapeutic Radiology

Grand Rounds

Smilow NP4-101A

ICD-10 Coding

Brenda D Fisser

[Read More >>](#)

August 16; 6PM

Yale Cancer Center Answers

WNPR

Patient Perspective: Head and Neck Cancer

Charles Timberlake

[Read More >>](#)

August 20: 9AM

Therapeutic Radiology Grand Rounds

Smilow NP4-101A

Molecular Mechanism of Non-Small Cell Lung Cancer

Katerina Politi, MD

[Read More >>](#)

Submissions

Please submit your recent publication and grant announcements to:

Renee Gaudette

Director, Public Affairs and Marketing

renee.gaudette@yale.edu

 Forward to a Friend

beginning 15 September 2015 to fund projects in amounts up to \$50,000 for one year (Projects may be eligible for a second year of funding, pending receipt and review of a competitive renewal application that documents unequivocal progress during the first year of funding.) Developmental Research Program Awards are intended to support a broad spectrum of innovative pilot projects applicable to human skin cancer risk, prevention, diagnosis, prognosis, or treatment. To be funded, DRP projects must have promising translational research potential, i.e., direct application to human skin cancer, and there must be the expectation that they can evolve into, or be incorporated into, full projects with an unequivocal translational component funded either within this SPORE or as independent R01 (or equivalent) grants.

Application Deadline: August 25, 2015

[Learn More >>](#)

[Download Instructions >>](#)

Class of '61 Yale Cancer Research Award

In order to recognize significant accomplishment and continuing outstanding promise in cancer research, Yale Cancer Center is pleased to announce the Class of '61 Yale Cancer Research Award. This annual award recognizes significant accomplishment in cancer research at Yale University by a young member of the faculty, coupled with the expectation for future outstanding contributions to our understanding of the causes and cures for cancer. The annual award, established through the ongoing generosity of the Yale College Class of 1961, will provide unrestricted funds to support the winner's cancer research. The initial award will be \$50,000. Nominees must be Yale faculty members age 45 or less, whose accomplishments are documented by published papers and awarded grants in any area of cancer research including seminal investigations into basic cancer biology, important translational or clinical studies, or critical population science studies.

Nomination Deadline: August 31, 2015

[Learn More >>](#)

Elsa U. Pardee Foundation Grants

The Elsa U. Pardee Foundation funds research to investigators in United States non-profit institutions proposing research directed toward identifying new treatments or cures for cancer. The Foundation particularly encourages grant applications for a one year period which will allow establishment of capabilities of new cancer researchers, or new cancer approaches by established cancer researchers. It is anticipated that this early stage funding by the Foundation may lead to subsequent and expanded support using government agency funding. Project relevance to cancer detection, treatment, or cure should be clearly identified.

Application Deadline: October 1, 2015

[Learn More >>](#)

Assay Validation For High Quality Markers For NCI-Supported Clinical Trials

The purpose of this Funding Opportunity Announcement (FOA) is to improve the development and validation of molecular diagnostics for the treatment, control, or prevention of cancer. This FOA includes, but is not limited to, the validation of prognostic, predictive or response markers for treatment and markers for cancer control or prevention trials. Applicants should have an assay that works in human samples and whose importance is well justified for development into a clinical assay. In addition, analytical validation of assays for these markers should be achieved when the application is submitted so that clinical validation may be achieved with little further analytical validation needed. This supplement may be used to support acquisition of specimens from retrospective or prospective studies from NCI-supported or other clinical trials. Clinical laboratory staff, technical and other needs must be an integral part of the application. Assays proposed for this FOA may be used to validate existing assays for use in other cancer clinical trials, observational studies or populations. Projects proposed for this FOA will require multi-disciplinary interaction and collaboration among scientific investigators, clinicians, statisticians and clinical laboratory scientists and staff. This FOA is not intended to support trials that assess the clinical utility of a marker/assay but is intended to develop assays to the point where their clinical utility could be assessed in other trials.

Application Deadline: October 7, 2015

[Learn More >>](#)

Smoking Cessation within the Context of Lung Cancer Screening

The goal of this Funding Opportunity Announcement (FOA) is to improve the effectiveness and/or implementation of smoking cessation interventions delivered to current smokers who undergo low-dose computed tomography (LDCT) lung cancer screening. The proposed projects must be aimed at determining:

- a) the key components and characteristics of an effective smoking cessation intervention delivered in the LDCT setting; and/or
- b) characteristics of an implementation strategy to optimally incorporate existing evidence-based smoking cessation intervention(s) into the LDCT setting.

Application Deadline: October 8, 2015

[Learn More >>](#)

Prostate, Lung, Colorectal and Ovarian Cancer (PLCO) Screening Trial Funding Opportunity

Briefly, this funding opportunity is aimed at advancing research in cancer etiology and early detection biomarkers, utilizing the advantages of the unique biorepository resources of the NCI-sponsored Prostate, Lung, Colorectal and Ovarian Cancer (PLCO) Screening Trial. The PLCO biorepository offers high quality, pre diagnostic, serial blood samples (serum/plasma/DNA/red cells/cryo-preserved whole blood) ideal for investigation of the causes and the natural history of various cancers and for pivotal validation of promising blood-based early detection biomarkers. The FOA supports biochemical and genetic analysis of cancer risk as well as discovery and validation of early detection biomarkers. The proposed research must involve the use of PLCO biospecimens.

Application Deadline: February 17, 2016

[Learn More >>](#)

Recent Publications

Are clear cell carcinomas of the ovary and endometrium phenotypically identical? A proteomic analysis.

Fata CR, Seeley EH, Desouki MM, Du L, Gwin K, Hanley KZ, Hecht JL, Jarboe EA, Liang SX, Parkash V, Quick CM, Zheng W, Shyr Y, Caprioli RM, Fadare O.
Hum Pathol. 2015 Jun 23

[Read More >>](#)

Crosstalk between the TNF and IGF pathways enhances NF- κ B activation and signaling in cancer cells.

Li S, Pinard M, Wang Y, Yang L, Lin R, Hiscott J, Su B, Brodt P.
Growth Horm IGF Res. 2015 Jul 20.

[Read More >>](#)

A penalized robust semiparametric approach for gene-environment interactions.

Wu C, Shi X, Cui Y, Ma S.
Stat Med. 2015 Aug 3.

[Read More >>](#)

Hypofractionated radiation therapy versus conventionally fractionated radiation therapy for early-stage breast cancer: how do we choose?

Evans SB, Yu JB.
Future Oncol. 2015 Aug;11(15):2105-7.

[Read More >>](#)

RAG Represents a Widespread Threat to the Lymphocyte Genome.

Teng G, Maman Y, Resch W, Kim M, Yamane A, Qian J, Kieffer-Kwon KR, Mandal M, Ji Y, Meffre E, Clark MR, Cowell LG, Casellas R, Schatz DG.
Cell. 2015 Jul 28.

[Read More >>](#)

Stem Cells Show Parental Control.

Myung P, Greco V.
Cell. 2015 Jul 30;162(3):476-7.

[Read More >>](#)

Chemotherapy in Prostate Cancer.

Hurwitz M.
Curr Oncol Rep. 2015 Oct;17(10):468.

[Read More >>](#)

Promotion of presynaptic filament assembly by the ensemble of *S. cerevisiae* Rad51 paralogues with Rad52.

Gaines WA, Godin SK, Kabbinavar FF, Rao T, VanDemark AP, Sung P, Bernstein KA.
Nat Commun. 2015 Jul 28;6:7834.

[Read More >>](#)

Exome sequencing identifies recurrent mutations in NF1 and RASopathy genes in sun-exposed melanomas.

Krauthammer M, Kong Y, Bacchicocchi A, Evans P, Pornputtapong N, Wu C, McCusker JP, Ma S, Cheng E, Straub R, Serin M, Bosenberg M, Ariyan S, Narayan D, Sznol M, Kluger HM, Mane S, Schlessinger J, Lifton RP, Halaban R.
Nat Genet. 2015 Jul 27.

[Read More >>](#)

Remodeling Tumor Vasculature to Enhance Delivery of Intermediate-Sized Nanoparticles.

Jiang W, Huang Y, An Y, Kim BY.
ACS Nano. 2015 Jul 31.

[Read More >>](#)

PIWI-interacting RNA 021285 is involved in breast tumorigenesis possibly by remodeling the cancer epigenome.

Fu A, Jacobs DI, Hoffman AE, Zheng T, Zhu Y.
Carcinogenesis. 2015 Jul 25.

[Read More >>](#)

Modulation of Sox10, HIF-1 α , Survivin, and YAP by Minocycline in the Treatment of Neurodevelopmental Handicaps following Hypoxic Insult.

Li Q, Tsuneki M, Krauthammer M, Couture R, Schwartz M, Madri JA.

Am J Pathol. 2015 Jul 22.

[Read More >>](#)