

# Department of Neuroscience

## Symposium I

**Monday, January 14, 2019**

**Continental Breakfast and Lunch Provided—Please Register by 1-8-2019 [CLICK HERE](#)**

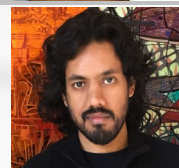
---

**9:00 AM Michelle Antoine, PhD - UC, Berkeley**  
“Synaptic and circuit homeostasis in mouse models of Autism.”



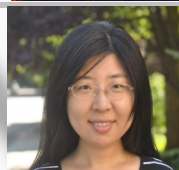
---

**10:00 AM Vikram Gadagkar, PhD - Cornell University**  
“Neural mechanisms of performance evaluation in singing birds.”



---

**11:00 AM Liang Liang, PhD- Harvard Medical School**  
“Neural computation at the retinogeniculate synapse: convergence, divergence and function.”

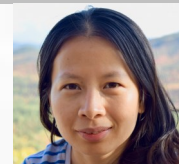


---

**12:00 PM Lunch**

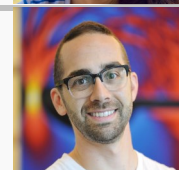
---

**1:00 PM Yi-Rong Peng, PhD - Harvard University**  
“Molecular architecture of the retina: from model systems to human vision.”



---

**2:00 PM Benjamin Scholl, PhD- Max Planck Florida**  
“The neural population within a neuron: synaptic building blocks of cortical selectivity.”

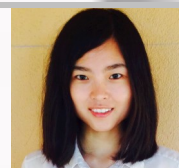


---

**3:00 PM Break**

---

**3:30 PM Xiao Wang, PhD - Stanford University**  
“Spatially resolved cell typing in mouse brain.”



---

**4:30 PM Ke Zhang, PhD - Johns Hopkins School of Medicine**  
“Targeting cellular stress responses in neurodegenerative diseases.”



**9:00 AM to 5:30 PM**

**The Maurice R. Greenberg Conference Center  
391 Prospect Street, New Haven**

**Parking:** Limited parking is available at the Center. Overflow parking is available at the Leitner Observatory  
**Shuttle:** The Center is located on the Yale Shuttle’s blue line with the closest stop being Yale Divinity School  
<http://greenberg.yale.edu/about/>

**Contact:** Katherine Bownes, [katherine.bownes@yale.edu](mailto:katherine.bownes@yale.edu), 203-785-4330