

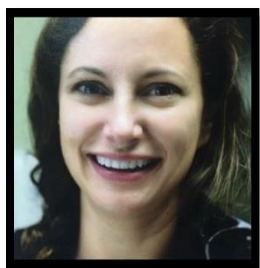


Yale General Internal Medicine Educational Strategies & Faculty Development Meeting

**“Facilitating information exchange in the EHR consultation process via a
“consult committee” and consult evaluation tool:
A Quality Improvement Initiative”**

Juliette Spelman, MD

**Assistant Professor of Medicine
General Internal Medicine
Yale School of Medicine**



**Date: Thursday, September 26, 2019
12:00pm – 1:00pm**

**Location: The Anlyan Center 2nd Floor
Room: TAC N203 (300 Cedar Street)**

General Internal Medicine Faculty Seminar

Course Director/Host: Patrick G. O'Connor, MD, MPH, 203-688-6532

There is no corporate or commercial support for this activity

This course will fulfill the licensure requirement set forth by the State of Connecticut

ACCREDITATION

The Yale School of Medicine is accredited by the Accreditation Council for Continuing Medical Education to provide continuing medical education for physicians.

TARGET AUDIENCE

Faculty, residents, students and staff involved in education of health care professional trainees.

NEEDS ASSESSMENT

There is an important need for general internists to understand the value of community level primary care assessment for policy and health planning, and the advantages of community-based participatory research methods for studying health systems.

LEARNING OBJECTIVES

At the conclusion of this activity, participants will be able to:

1. Describe the formation of consult committee and consult evaluation tool
2. Review hurdles involved in capturing measurable outcomes associated with EHR redesign.
3. Discuss future direction for assessing consult redesign process.

DESIGNATION STATEMENT

The Yale School of Medicine designates this live activity for 1 *AMA PRA Category 1 Credit(s)*TM. Physicians should only claim the credit commensurate with the extent of their participation in the activity.

FACULTY DISCLOSURES

Dr. Spelman has no conflicts of interest to disclose. Dr. Patrick G. O'Connor, Course Director, has no conflicts of interest to disclose.

It is the policy of Yale School of Medicine, Continuing Medical Education, to ensure balance, independence, objectivity and scientific rigor in all its educational programs. All faculty participating as speakers in these programs are required to disclose any relevant financial relationship(s) they (or spouse or partner) have with a commercial interest that benefits the individual in any financial amount that has occurred within the past 12 months; and the opportunity to affect the content of CME about the products or services of the commercial interests. The Center for Continuing Medical Education will ensure that any conflicts of interest are resolved before the educational activity occurs.