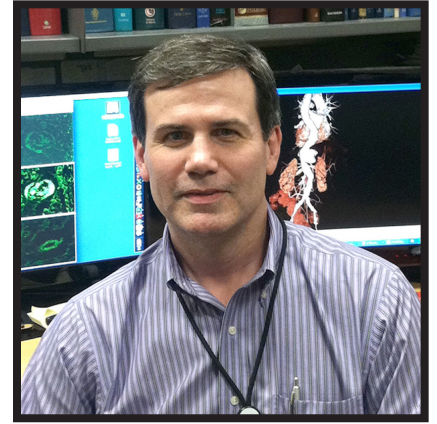


YALE SCHOOL OF MEDICINE
PATHOLOGY
GRAND ROUNDS AND
DIAGNOSTIC SLIDE SEMINAR

Host: He Wang, MD, PhD



James R. Stone, MD, PhD
Head of Cardiovascular Pathology Service
Massachusetts General Hospital
Associate Professor of Pathology, Harvard Medical School

GRAND ROUNDS: 12:30 PM

**“Cardiac Pathology of SARS-CoV-2
Infection”**

Thursday, May 20th, 2021

Zoom Meetings ID and Password: emailed separately

For information contact : susana.cruz@yale.edu

There is no corporate or grant support for this activity. This course will fulfill the licensure requirement set forth by the State of Connecticut.

ACCREDITATION

The Yale School of Medicine is accredited by the Accreditation Council for Continuing Medical Education to provide continuing medical education for physicians.

TARGET AUDIENCE

Attending physicians, researchers, house staff, fellows, residents, medical students, nurses.

NEEDS ASSESSMENT

It is important to understand the newly elucidated cardiac changes associated with SARS-CoV-2 infection and how these changes are associated with specific treatments in order to improve patient diagnosis and

treatment in both the settings of acute infection and potentially in patients with long COVID syndrome.

LEARNING OBJECTIVES

At the conclusion of this activity, participants will be able to:

- Understand the various cardiac pathologies contributing to elevated troponin levels in patients with COVID-19.
- Appreciate advances into understanding myocarditis and cardiac infection in patients with COVID-19.
- Understand the relationship and distinction between autopsy studies on patients dying from COVID-19 and clinical imaging studies on patients who recov-

ered from COVID-19.

DESIGNATION STATEMENT

The Yale School of Medicine designates this live activity for 1 AMA PRA Category 1 Credit(s)[™]. Physicians should only claim credit commensurate with the extent of their participation in the activity

FACULTY DISCLOSURES

Speaker Name: - James R. Stone, MD, PhD - Cook Medical, consultant fees

Course Directors: Manju Prasad, MD - NONE

Kurt Schalper, MD, PhD - NONE

Gopal Pallavi, MD, PhD - NONE

It is the policy of Yale School of Medicine, Continuing

Medical Education, to ensure balance, independence, objectivity and scientific rigor in all its educational programs. All faculty participating as speakers in these programs are required to disclose any relevant financial relationship(s) they (or spouse or partner) have with a commercial interest that benefits the individual in any financial amount that has occurred within the past 12 months; and the opportunity to affect the content of CME about the products or services of the commercial interests. The Center for Continuing Medical Education will ensure that any conflicts of interest are resolved before the educational activity occurs.