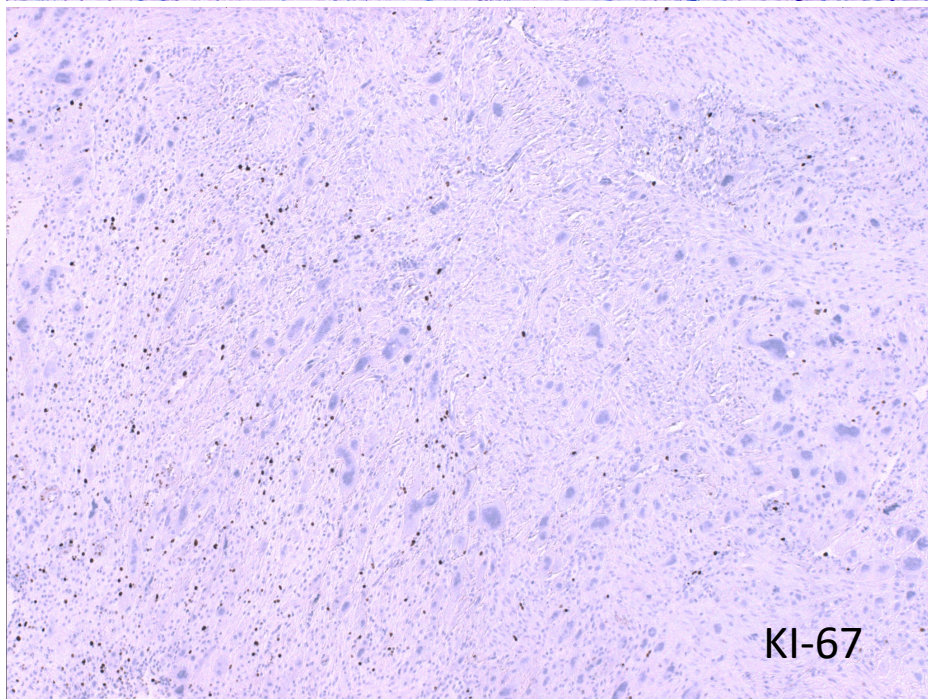
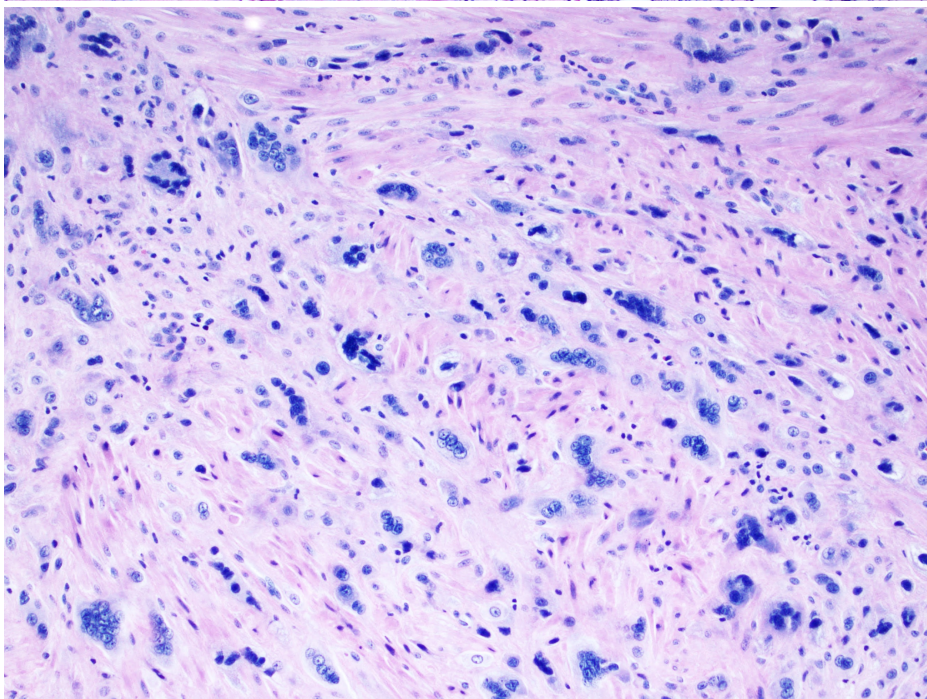
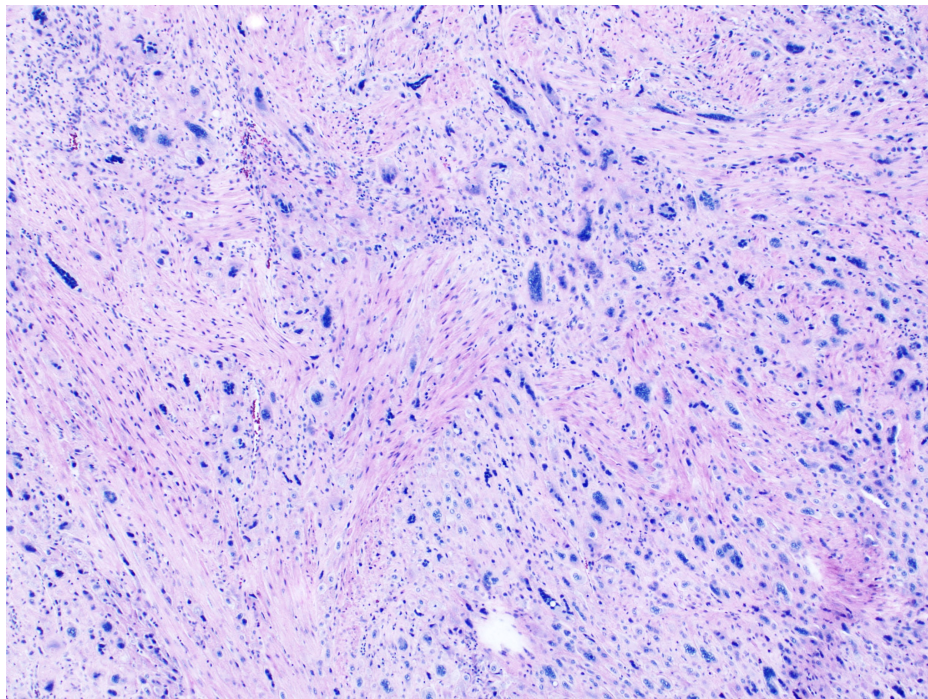
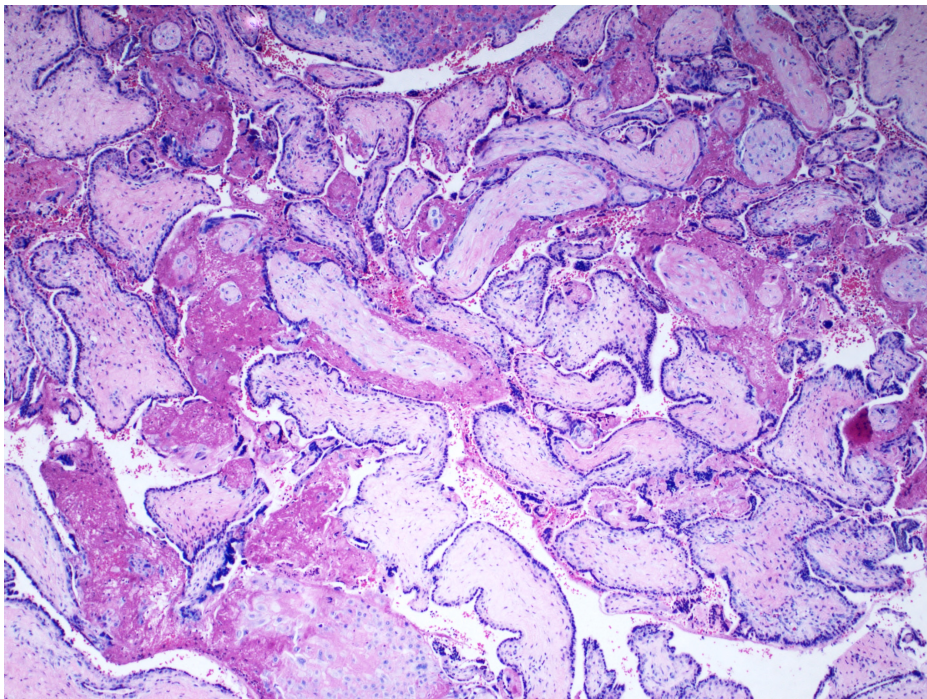




18-year-old presenting with spontaneous abortion with pain and vaginal bleeding. Two specimens were received: “product of conception” and “adherent tissue to posterior endometrium”.

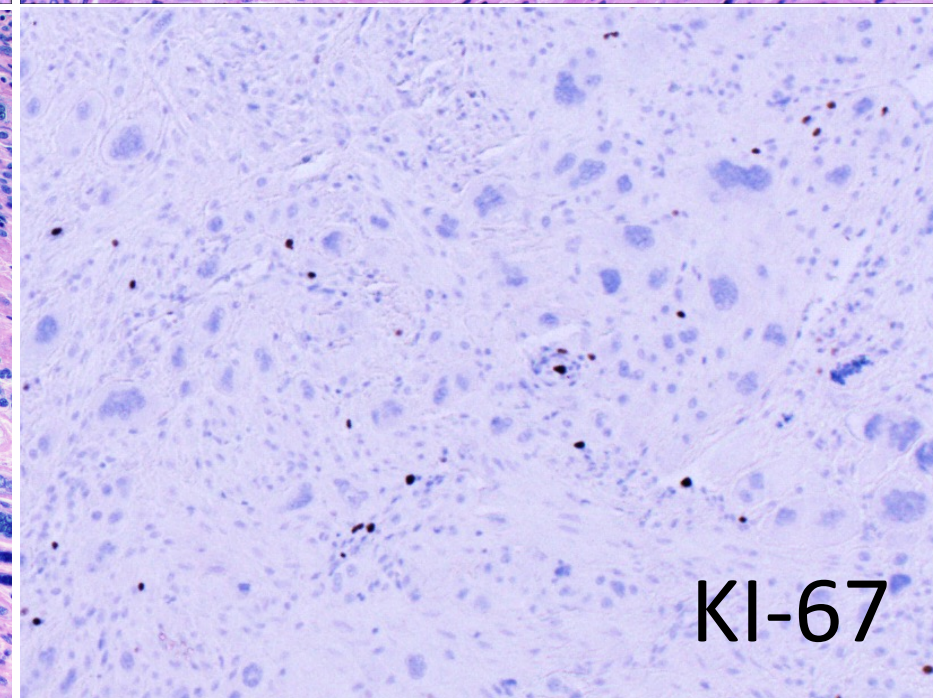
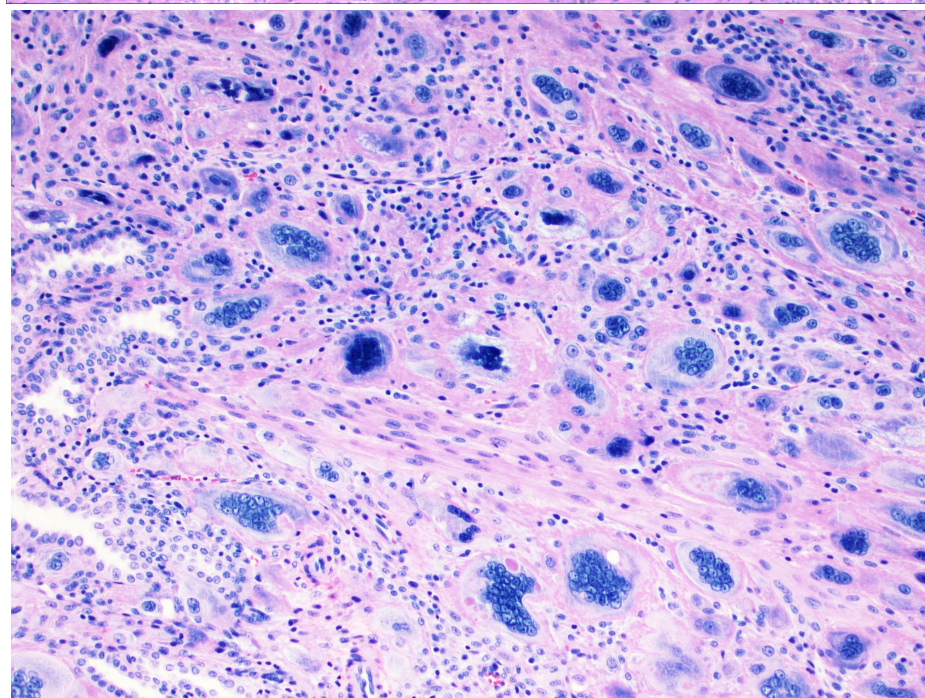
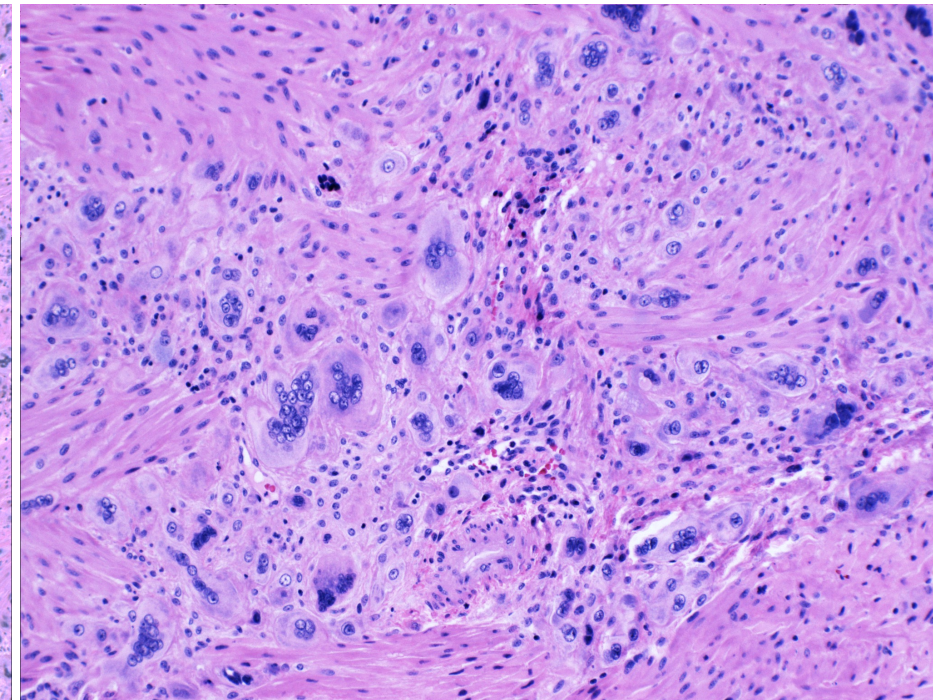
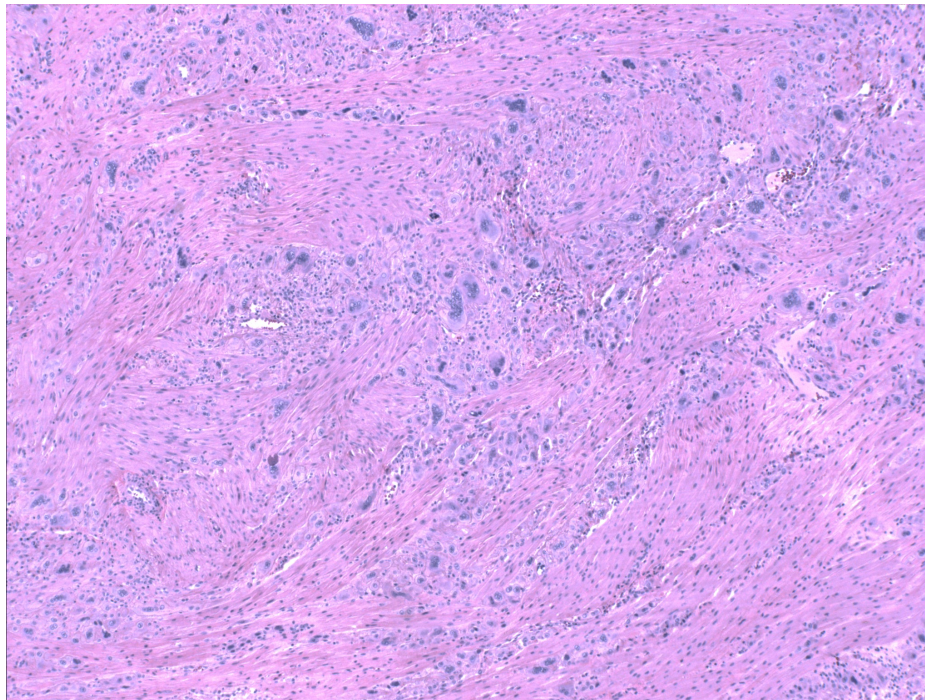


KI-67

Differential diagnoses

- A. Placental site trophoblastic tumor (PSTT)
- B. Exaggerated implantation site reaction (EPS)
- C. Placental site nodule (PSN)
- D. Atypical placental site nodule (APSN)

Additional Images



KI-67

Fragments of endomyometrium display an exuberant distribution of intermediate trophoblast, simulating an infiltrating neoplasm or PSTT. There are multinucleated trophoblastic cells that are relatively evenly distributed throughout the lesion. Ki-67 stain shows absence of nuclear staining in the trophoblast, in contrast to positively stained background small lymphocytes.

Final Diagnosis: Exaggerated Implantation Site
(EPS)