

## **SPECIAL REPORT**

# **No Safe Haven: Bombardment of Abu Shouk IDP Camp and El-Fasher's Increasing Berm Encirclement**

11 September 2025

**Yale** SCHOOL OF PUBLIC HEALTH  
*Humanitarian Research Lab*

© 2025 Humanitarian Research Lab at Yale School of Public Health.  
Imagery © 2025 Maxar Technologies.

Maps utilize data sources from © OpenStreetMap contributors.

This report was independently produced by the Yale School of Public Health's Humanitarian Research Lab. Learn more at <https://medicine.yale.edu/lab/khoshnood/>. Reports available at <https://medicine.yale.edu/lab/khoshnood/publications/reports/>

The Faculty Director of the Humanitarian Research Lab (HRL) at the Yale School of Public Health is Dr. Kaveh Khoshnood. The analysis and production of this report was overseen by HRL Executive Director Nathaniel Raymond and Caitlin Howarth. Analysis and report production was conducted by the Humanitarian Research Lab's Conflict Analytics team.

Citation | Raymond, Nathaniel A. and Caitlin Howarth et al. "SPECIAL REPORT No Safe Haven: Bombardment of Abu Shouk IDP Camp and El-Fasher's Increasing Encirclement by Berms", 11 September 2025. Humanitarian Research Lab at Yale School of Public Health: New Haven.

## **I. Key Findings**

The Yale School of Public Health's Humanitarian Research Lab (HRL) has identified over 50 instances of bombardment in Abu Shouk Internally Displaced Persons (IDP) camp in satellite imagery collected between 30 August and 10 September 2025. This bombardment includes over 20 instances of damage to Naivasha Market in Abu Shouk IDP Camp. Yale HRL also assesses a significant number of likely fatalities in Abu Shouk based on an increase of 190 burial mounds in a civilian cemetery between 3 August and 10 September 2025.

The RSF-controlled berm around El-Fasher has expanded by at least 7 km since 27 August; there are now at least 38 km of berm encircling El-Fasher and gaps in the berm are closing. Finally, Yale HRL identifies damage to SAF installations around the El-Fasher Airport. The damage, cemetery expansion, and berm activity indicate that there is no civilian safe haven in El-Fasher.

### **Artillery Bombardment in Abu Shouk IDP Camp**

Yale HRL has identified evidence of mass bombardment in Abu Shouk IDP Camp over a 10-day span from 30 August to 10 September 2025. Yale HRL has identified over 50 destroyed structures or munition impacts across the area, including at least 22 munition impacts damaging structures at Navaisha Market. This assessment is believed to be a significant underestimate due to the challenges of assessing damage to small and densely packed structures in satellite imagery.

Open sources have reported repeated artillery bombardments in Abu Shouk IDP camp throughout the 30 August – 10 September 2025 period, including drone strikes. RSF artillery bombardment allegedly occurred on 31 August, 1 September, 2 September, 3 September, and 8 September,<sup>1</sup> and open sources reported drone<sup>2</sup> attacks on 4 and 8 September 2025.<sup>3</sup>

### **Increase in Fatality Indicators in Abu Shouk IDP Camp and El-Fasher**

Yale HRL identifies a significant increase in burial mounds in an Abu Shouk IDP Camp cemetery, observing 190 new objects consistent with burial mounds in Al-Rahma Cemetery in less than six weeks between 3 August and 10 September 2025.

Yale HRL also identifies approximately 50 new burial mounds using satellite imagery collected between 3 August and 10 September 2025 at a cemetery outside the former UNAMID compound in Abu Shouk IDP camp, believed to be a base of operations for Joint Forces.

Local media and other open sources have reported regular fatalities from artillery bombardment and famine, exacerbated by a lack of medical care.<sup>4</sup> Over four days between 31 August and 3 September alone, 150 people needed medical attention due to conflict-related injuries.<sup>5</sup> At least 18 people were reportedly killed from RSF artillery

shelling on 1 September<sup>6</sup> and dozens were reported killed in Abu Shouk and west El-Fasher on 3 September.<sup>7</sup> Children are allegedly dying in IDP shelters, including from acute watery diarrhea<sup>8</sup> and open sources claim that it is not safe to move due to artillery bombardment and drone attacks.<sup>9</sup>

### **RSF Berms Continue to Wall-In El-Fasher**

RSF has expanded the earthen walls, or berms, encircling El-Fasher by over 7 kilometers between 27 August and 10 September 2025. There are now a total of at least 38 kilometers of berms encircling the city. One of the new berms has expanded from the southeast clockwise past the southern exit of the B-26 road down to Zamzam IDP Camp. A second berm is being created in the gap by Al-Salaam IDP Camp. There are now only two areas which are not currently barricaded around El-Fasher: an approximately 9 kilometer gap mostly in a *wadi* (an area that seasonally floods) between Shagara and west of the southern egress of the B-26 road to Zamzam IDP Camp, and two gaps totaling approximately 4 kilometers northeast of El-Fasher near Al-Salaam IDP Camp. In short, the city is almost fully encircled by the earthen walls and RSF appears to be rapidly closing these gaps while bombarding Abu Shouk IDP Camp.

Local media, videos from survivors, and other open sources continue to report widespread and ongoing RSF extrajudicial killings, extrajudicial detentions and abductions, and extremely high costs or looting of people fleeing El-Fasher.<sup>10, 11</sup> RSF looting and fighting in Abu Shouk IDP Camp itself reportedly caused significant displacement in Abu Shouk IDP Camp itself.<sup>12</sup> There continue to be reports of dead bodies by the sides of the roads on the way to Tawilah and other areas outside El-Fasher.<sup>13</sup> There are widespread reports of RSF abducting and extrajudicially detaining women and girls – both from homes in El-Fasher and Abu Shouk IDP Camp as well as while fleeing El-Fasher.<sup>14</sup> There are reports that RSF is forcibly taking blood from people fleeing El-Fasher, some of whom allegedly died after being released from RSF custody.<sup>15</sup> There continue to be mass shortages of food, water, and medicines; even the *ambaaz*, an animal feed supplement that people have resorting to eating, is running out.<sup>16</sup>

### **Significant Damage to Facilities used by SAF and Joint Forces**

Yale HRL identifies multiple instances of conflict-related damage to SAF and Joint Forces' military installations. Six structures at a SAF encampment were destroyed likely by munitions, as observed in satellite imagery collected between 30 August and 10 September 2025. There is likely bombardment damage to the façade of a building in the SAF 6<sup>th</sup> Division and munition impacts to the roof of a building at the University of El-Fasher, located near known SAF installations, during the same period.



## **Protected Objects and Critical Infrastructure Bombarded**

Yale HRL identifies conflict-related damage to at least three mosques and a structure at the water treatment facility in satellite imagery between 30 August 2025 and 10 September 2025. The three mosques are located in different areas of El-Fasher: two in Abu Shouk and one on the grounds of El-Fasher University. All of these facilities were damaged from some form of bombardment, likely artillery bombardment. The El-Fasher Emergency Room alleged that RSF destroyed 98% of clean drinking water sources as of 30 August 2025.<sup>17</sup>

## **II. Human Security Analysis**

There are no safe havens left for civilians remaining in El-Fasher. People are being routinely and indiscriminately bombarded by artillery and suicide drones. People are starving from lack of food. Clean water is running out, if it has not already. Any remaining escape routes are being eliminated by the continued construction of berms and RSF's advances. Those that have made it to the berm face the real risk of being extorted, abducted, assaulted, or executed. For over a year, Yale HRL has been warning that time was running out for civilians in El-Fasher. The mounting evidence of escalating fatalities, damage to what remains of El-Fasher's critical infrastructure, and the city's steady encirclement by earth walls indicates that time has now run out. Yale HRL does not believe that there are safe havens remaining in El-Fasher: artillery and drone bombardment, extrajudicial detentions, abductions, and torture, extrajudicial killings, food, water, and medical shortages mean that there is both no safety in staying put and no escape.

## **III. Methodology**

Yale HRL utilizes data fusion methodologies of open source and remote sensing data analysis. Yale HRL produced this report through the cross-corroboration of open source data, including social media, local news reporting, multimedia, and other reports, and remote sensing data, including satellite imagery and thermal sensor data. Researchers analyzed open source data across social media, news reports, and other publicly available sources to identify, chrono- and geolocate, and verify incidents. Analysts assess the credibility and reliability of open source data based on a source's level of detail, past credibility, and the corroboration of other independent sources. Remote sensing and satellite imagery analysis relies on multi-temporal change detection, which involves the comparison of two or more satellite images of the same area captured at different times to detect differences in coloration, visual properties, and presence, absence, or positional change of objects across the images.

Place names were identified using UN P-codes obtained via the United Nations Humanitarian Data Exchange (HDX) and International Organization for Migration (IOM)'s Displacement Tracking Matrix (DTM) Sudan. This baseline was then verified

and informed through open source analysis by Yale HRL's analysts with relevant cultural and linguistic skills.

## Limitations

There are significant limitations to the data fusion methodology. The information environment in Sudan does not have the breadth of data available in other locations and there is likely a significant reporting bias for those who provide open source reporting. The tools and techniques present significant challenges to assess activities such as extrajudicial detention, conflict-related sexual violence (CRSV), and conflict-related casualties, particularly in environments with limited data. Satellite imagery analysis is limited by available imagery over time and space. Available nadir angles of satellite imagery can produce challenges to assess structural damage, until multiple angles and ground-level photographic and video materials emerge to help inform the analysis. Image resolution level can also limit the analyst's ability to perceive the full extent of damage present.

---

<sup>1</sup> "الفاشر: نزوح ألف شخص وقتلى وجرحى جراء استمرار القصف والهجمات" *Radio Dabanga*, 31 August 2025, <https://www.dabangasudan.org/ar/all-news/article/%d8%a7%d9%84%d9%81%d8%a7%d8%b4%d8%b1-%d9%86%d8%b2%d9%88%d8%ad-%d8%a3%d9%84%d9%81-%d8%b4%d8%ae%d8%b5-%d9%88%d9%82%d8%aa%d9%84%d9%89-%d9%88%d8%ac%d8%b1%d8%ad%d9%89-%d8%ac%d8%b1%d8%a7%d8%a1-%d8%a7%d8%b3>, archived at <https://perma.cc/2UYX-M8NC>;

"نداء استغاثة من صحفيين لا يزالون في الفاشر" *Radio Dabanga*, 5 September 2025 <https://www.dabangasudan.org/ar/all-news/article/%d9%86%d8%af%d8%a7%d8%a1-%d8%a7%d8%b3%d8%aa%d8%ba%d8%a7%d8%ab%d8%a9-%d9%85%d9%86-%d8%b5%d8%ad%d9%81%d9%8a%d9%8a%d9%86-%d9%84%d8%a7-%d9%8a%d8%b2%d8%a7%d9%84%d9%88%d9%86-%d9%81%d9%8a-%d8%a7%d9%84%d9%81>, archived at <https://perma.cc/N8DJ-W9NW>

"الفاشر: القوات المسلحة تعلن صد هجوم جديد على المحور الشمالي" *Radio Dabanga*, 2 September 2025, <https://www.dabangasudan.org/ar/all-news/article/%d8%a7%d9%84%d9%81%d8%a7%d8%b4%d8%b1-%d8%a7%d9%84%d9%82%d9%88%d8%a7%d8%aa-%d8%a7%d9%84%d9%85%d8%b3%d9%84%d8%ad%d8%a9-%d8%aa%d8%b9%d9%84%d9%86-%d8%b5%d8%af-%d9%87%d8%ac%d9%88%d9%85-%d8%ac%d8%af%d9%8a> archived at <https://perma.cc/P93F-UEEF>

"القوات المسلحة تسيطر على مناطق جديدة في شمال كردفان وتصد هجوما على الفاشر" *Radio Dabanga*, 9 September 2025, <https://www.dabangasudan.org/ar/all-news/article/%D8%A7%D9%84%D9%82%D9%88%D8%A7%D8%AA-%D8%A7%D9%84%D9%85%D8%B3%D9%84%D8%AD%D8%A9-%D8%AA%D8%B3%D9%8A%D8%B7%D8%B1-%D8%B9%D9%84%D9%89-%D9%85%D9%86%D8%A7%D8%B7%D9%82-%D8%AC%D8%AF%D9%8A%D8%AF%D8%A9-%D9%81>, archived at <https://perma.cc/3X4L-FTMC>

"مقتل 9 مدنيين خلال تجدد الاشتباكات بالفاشر" *Darfur24*, 9 September 2025, <https://www.darfur24.com/2025/09/09/%d9%85%d9%82%d8%aa%d9%84-9-%d9%85%d8%af%d9%86%d9%8a%d9%8a%d9%86-%d8%ae%d9%84%d8%a7%d9%84-%d8%aa%d8%ac%d8%af%d8%af-%d8%a7%d9%84%d8%a7%d8%b4%d8%aa%d8%a>

---

[8%d8%a7%d9%83%d8%a7%d8%aa-%d8%a8%d8%a7%d9%84%d9%81/, archived at https://perma.cc/JNA2-8PVC](https://perma.cc/JNA2-8PVC)

"مقتل 8 أشخاص خلال قصف مدفعي جديد على الفاشر" *Darfur24*, 3 September 2025, <https://www.darfur24.com/2025/09/03/%d9%85%d9%82%d8%aa%d9%84-8-%d8%a3%d8%b4%d8%ae%d8%a7%d8%b5-%d8%ae%d9%84%d8%a7%d9%84-%d9%82%d8%b5%d9%81-%d9%85%d8%af%d9%81%d8%b9%d9%8a-%d8%ac%d8%af%d9%8a%d8%af-%d8%b9%d9%84%d9%89-%d8%a7%d9%84%d9%81/>, archived at <https://perma.cc/359U-HPPF>

<sup>2</sup> "الفاشر: نزوح ألف شخص وقتلى وجرحى جراء استمرار القصف والهجمات" *Radio Dabanga*, 31 August 2025, <https://www.dabangasudan.org/ar/all-news/article/%d8%a7%d9%84%d9%81%d8%a7%d8%b4%d8%b1-%d9%86%d8%b2%d9%88%d8%ad-%d8%a3%d9%84%d9%81-%d8%b4%d8%ae%d8%b5-%d9%88%d9%82%d8%aa%d9%84%d9%89-%d9%88%d8%ac%d8%b1%d8%ad%d9%89-%d8%ac%d8%b1%d8%a7%d8%a1-%d8%a7%d8%b3>, archived at <https://perma.cc/2UYX-M8NC>;  
"نداء استغاثة من صحفيين لا يزالون في الفاشر" *Radio Dabanga*, 5 September 2025 <https://www.dabangasudan.org/ar/all-news/article/%d9%86%d8%af%d8%a7%d8%a1-%d8%a7%d8%b3%d8%aa%d8%ba%d8%a7%d8%ab%d8%a9-%d9%85%d9%86-%d8%b5%d8%ad%d9%81%d9%8a%d9%8a%d9%86-%d9%84%d8%a7-%d9%8a%d8%b2%d8%a7%d9%84%d9%88%d9%86-%d9%81%d9%8a-%d8%a7%d9%84%d9%81>, archived at <https://perma.cc/N8DJ-W9NW>

"الفاشر: القوات المسلحة تعلن صد هجوم جديد على المحور الشمالي" *Radio Dabanga*, 2 September 2025, <https://www.dabangasudan.org/ar/all-news/article/%d8%a7%d9%84%d9%81%d8%a7%d8%b4%d8%b1-%d8%a7%d9%84%d9%82%d9%88%d8%a7%d8%aa-%d8%a7%d9%84%d9%85%d8%b3%d9%84%d8%ad%d8%a9-%d8%aa%d8%b9%d9%84%d9%86-%d8%b5%d8%af-%d9%87%d8%ac%d9%88%d9%85-%d8%ac%d8%af%d9%8a> archived at <https://perma.cc/P93F-UEEF>

"القوات المسلحة تسيطر على مناطق جديدة في شمال كردفان وتصد هجوما على الفاشر" *Radio Dabanga*, 9 September 2025, <https://www.dabangasudan.org/ar/all-news/article/%D8%A7%D9%84%D9%82%D9%88%D8%A7%D8%AA-%D8%A7%D9%84%D9%85%D8%B3%D9%84%D8%AD%D8%A9-%D8%AA%D8%B3%D9%8A%D8%B7%D8%B1-%D8%B9%D9%84%D9%89-%D9%85%D9%86%D8%A7%D8%B7%D9%82-%D8%AC%D8%AF%D9%8A%D8%AF%D8%A9-%D9%81>, archived at <https://perma.cc/3X4L-FTMC>

"مقتل 9 مدنيين خلال تجدد الاشتباكات بالفاشر" *Darfur24*, 9 September 2025, <https://www.darfur24.com/2025/09/09/%d9%85%d9%82%d8%aa%d9%84-9-%d9%85%d8%af%d9%86%d9%8a%d9%8a%d9%86-%d8%ae%d9%84%d8%a7%d9%84-%d8%aa%d8%ac%d8%af%d8%af-%d8%a7%d9%84%d8%a7%d8%b4%d8%aa%d8%a8%d8%a7%d9%83%d8%a7%d8%aa-%d8%a8%d8%a7%d9%84%d9%81/>, archived at <https://perma.cc/JNA2-8PVC>

"مقتل 8 أشخاص خلال قصف مدفعي جديد على الفاشر" *Darfur24*, 3 September 2025, <https://www.darfur24.com/2025/09/03/%d9%85%d9%82%d8%aa%d9%84-8-%d8%a3%d8%b4%d8%ae%d8%a7%d8%b5-%d8%ae%d9%84%d8%a7%d9%84-%d9%82%d8%b5%d9%81-%d9%85%d8%af%d9%81%d8%b9%d9%8a-%d8%ac%d8%af%d9%8a%d8%af-%d8%b9%d9%84%d9%89-%d8%a7%d9%84%d9%81/>, archived at <https://perma.cc/359U-HPPF>

---

<sup>3</sup> "نداء استغاثة من صحفيين لا يزالون في الفاشر" *Radio Dabanga*, 5 September 2025, <https://www.dabangasudan.org/ar/all-news/article/%d9%86%d8%af%d8%a7%d8%a1-%d8%a7%d8%b3%d8%aa%d8%ba%d8%a7%d8%ab%d8%a9-%d9%85%d9%86-%d8%b5%d8%ad%d9%81%d9%8a%d9%8a%d9%86-%d9%84%d8%a7-%d9%8a%d8%b2%d8%a7%d9%84%d9%88%d9%86-%d9%81%d9%8a-%d8%a7%d9%84%d9%81>, archived at <https://perma.cc/N8DJ-W9NW>;

"الفاشر: القوات المسلحة تعلن صد هجوم جديد على المحور الشمالي" *Radio Dabanga*, 2 September 2025, <https://www.dabangasudan.org/ar/all-news/article/%d8%a7%d9%84%d9%81%d8%a7%d8%b4%d8%b1-%d8%a7%d9%84%d9%82%d9%88%d8%a7%d8%aa-%d8%a7%d9%84%d9%85%d8%b3%d9%84%d8%ad%d8%a9-%d8%aa%d8%b9%d9%84%d9%86-%d8%b5%d8%af-%d9%87%d8%ac%d9%88%d9%85-%d8%ac%d8%af%d9%8a> archived at <https://perma.cc/P93F-UEEF>

"الفاشر: قتلى وجرحى وارتفاع متزايد لسعر "الألباز" *Radio Dabanga*, 9 September 2025, <https://www.dabangasudan.org/ar/all-news/article/%D8%A7%D9%84%D9%81%D8%A7%D8%B4%D8%B1-%D9%82%D8%AA%D9%84%D9%89-%D9%88%D8%AC%D8%B1%D8%AD%D9%89-%D9%88%D8%A7%D8%B1%D8%AA%D9%81%D8%A7%D8%B9-%D9%85%D8%AA%D8%B2%D8%A7%D9%8A%D8%AF-%D9%84%D8%B3%D8%B9%D8%B1>, archived at <https://perma.cc/C8BL-KUVH>

"مسيرات الدعم الإستراتيجية تدخل أجواء الفاشر الآن وتنفذ ضربات جوية في شمال غرب المدينة. ■" *Muammar Ibrahim (@MUAMMAR\_SUD)*, 4 September 2025, [https://x.com/MUAMMAR\\_SUD/status/1963706688382324740](https://x.com/MUAMMAR_SUD/status/1963706688382324740), archived at <https://perma.cc/S8SR-TXMH>

"«أطباء في الفاشر يلجؤون إلى «الناموسيات» لتضميد الجراح بعد انعدام «الشاش»" *Sudan Tribune*, 8 September 2025, <https://sudantribune.net/article304738/>, archived at <https://perma.cc/9Y9L-3J22>

<sup>5</sup> "مقتل 8 أشخاص خلال قصف مدفعي جديد على الفاشر" *Darfur24*, 3 September 2025, <https://www.darfur24.com/2025/09/03/%d9%85%d9%82%d8%aa%d9%84-8-%d8%a3%d8%b4%d8%ae%d8%a7%d8%b5-%d8%ae%d9%84%d8%a7%d9%84-%d9%82%d8%b5%d9%81-%d9%85%d8%af%d9%81%d8%b9%d9%8a-%d8%ac%d8%af%d9%8a%d8%af-%d8%b9%d9%84%d9%89-%d8%a7%d9%84%d9%81/> archived at <https://perma.cc/359U-HPPF>

<sup>6</sup> "الفاشر: القوات المسلحة تعلن صد هجوم جديد على المحور الشمالي" *Radio Dabanga*, 2 September 2025, <https://www.dabangasudan.org/ar/all-news/article/%d8%a7%d9%84%d9%81%d8%a7%d8%b4%d8%b1-%d8%a7%d9%84%d9%82%d9%88%d8%a7%d8%aa-%d8%a7%d9%84%d9%85%d8%b3%d9%84%d8%ad%d8%a9-%d8%aa%d8%b9%d9%84%d9%86-%d8%b5%d8%af-%d9%87%d8%ac%d9%88%d9%85-%d8%ac%d8%af%d9%8a> archived at <https://perma.cc/P93F-UEEF>

<sup>7</sup> "مقتل 8 أشخاص خلال قصف مدفعي جديد على الفاشر" *Darfur24*, 3 September 2025, <https://www.darfur24.com/2025/09/03/%d9%85%d9%82%d8%aa%d9%84-8-%d8%a3%d8%b4%d8%ae%d8%a7%d8%b5-%d8%ae%d9%84%d8%a7%d9%84-%d9%82%d8%b5%d9%81-%d9%85%d8%af%d9%81%d8%b9%d9%8a-%d8%ac%d8%af%d9%8a%d8%af-%d8%b9%d9%84%d9%89-%d8%a7%d9%84%d9%81/>, archived at <https://perma.cc/359U-HPPF>

Radio Dabanga, 5 September 2025, <https://www.dabangasudan.org/ar/all-news/article/%d9%86%d8%af%d8%a7%d8%a1-%d8%a7%d8%b3%d8%aa%d8%ba%d8%a7%d8%ab%d8%a9-%d9%85%d9%86-%d8%b5%d8%ad%d9%81%d9%8a%d9%8a%d9%86-%d9%84%d8%a7-%d9%8a%d8%b2%d8%a7%d9%84%d9%88%d9%86-%d9%81%d9%8a-%d8%a7%d9%84%d9%81>, archived at <https://perma.cc/N8DJ-W9NW>

*Sudan Tribune*, 10 September 2025, <https://sudantribune.net/article304819/>, archived at <https://perma.cc/933B-C8WS>

<sup>12</sup> "احتدام المواجهات في «الفاشر» وطيران الجيش يقصف مواقع الدعم السريع بضرارة" *Sudan Tribune*, 30 August 2025, <https://sudantribune.net/article304477/>, archived at <https://perma.cc/8NVC-GQTR>

<sup>14</sup> HRL MMC 116

<https://www.dabangasudan.org/ar/radio-news/article/%D8%A7%D9%84%D9%81%D8%A7%D8%B4%D8%B1-%D9%82%D8%AA%D9%84%D9%89-%D9%88%D8%AC%D8%B1%D8%AD%D9%89-%D9%88%D8%A7%D>

---

[8%B1%D8%AA%D9%81%D8%A7%D8%B9-%D9%85%D8%AA%D8%B2%D8%A7%D9%8A%D8%AF-%D9%84%D8%B3%D8%B9%D8%B1](https://perma.cc/MR99-2WF3), archived at <https://perma.cc/MR99-2WF3>; «الفاشر» وطيران الجيش يقصف مواقع الدعم السريع بضراوة" *Sudan Tribune*, 30 August 2025, <https://sudantribune.net/article304477/>, archived at <https://perma.cc/8NVC-GQTR>

<sup>17</sup> «الفاشر» وطيران الجيش يقصف مواقع الدعم السريع بضراوة" *Sudan Tribune*, 30 August 2025, <https://sudantribune.net/article304477/>, archived at <https://perma.cc/8NVC-GQTR>

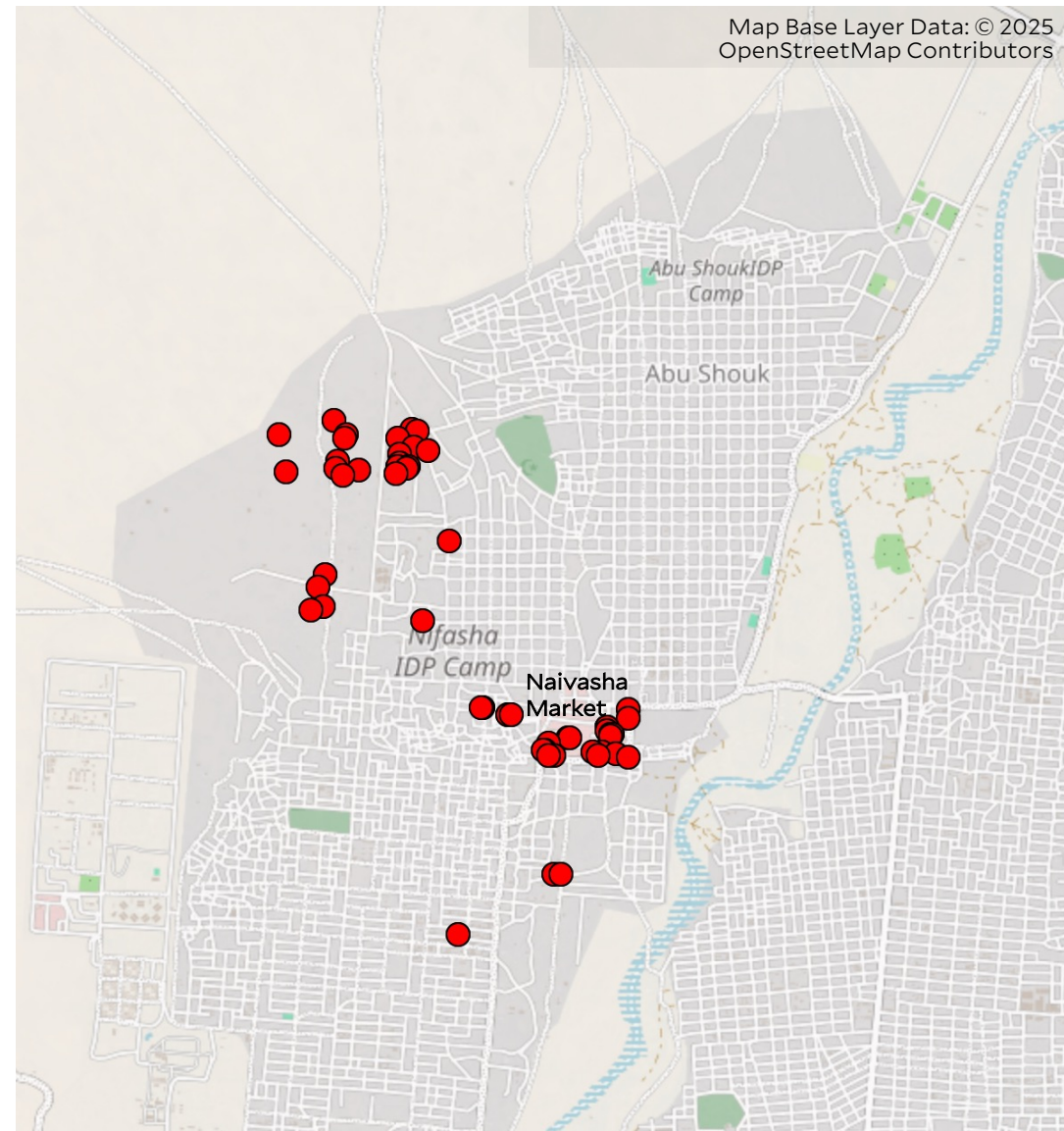


## Abu Shouk IDP Camp El-Fasher | 10 September 2025

● Newly observed munition impacts

Imagery collected on 10 September 2025 over El-Fasher shows the new presence of over 50 munition impacts, mostly affecting structures, throughout the Abu Shouk IDP Camp since 30 August 2025.

At least 20 of these impacts are observed in and around the Naivasha Market within the camp.



## Abu Shouk IDP Camp, El-Fasher

### CONFLICT-RELATED DAMAGE OBSERVED BETWEEN 30 AUGUST-10 SEPTEMBER 2025

Analysis of satellite imagery collected between 30 August and 10 September 2025 over El-Fasher shows the destruction of structures in the Abu Shouk IDP Camp.



30 August 2025 © 2025 Maxar Technologies  
Image enhanced with MGP Pro + HD image enhancement



10 September 2025 © 2025 Maxar Technologies  
Image enhanced with MGP Pro + HD image enhancement



## Naivasha Market, Abu Shouk IDP Camp, El-Fasher

### CONFLICT-RELATED DAMAGE OBSERVED BETWEEN 30 AUGUST-10 SEPTEMBER 2025

Analysis of satellite imagery collected between 30 August and 10 September 2025 over El-Fasher shows damage to several structures from likely munition impacts in the Naivasha Market located in the Abu Shouk IDP Camp.



30 August 2025 © 2025 Maxar Technologies



10 September 2025 © 2025 Maxar Technologies

## Naivasha Market, Abu Shouk IDP Camp, El-Fasher

### CONFLICT-RELATED DAMAGE OBSERVED BETWEEN 30 AUGUST-10 SEPTEMBER 2025



30 August 2025 © 2025 Maxar Technologies

Analysis of satellite imagery collected between 30 August and 10 September 2025 over El-Fasher shows damage to several structures from likely munition impacts in the Naivasha Market located in the Abu Shouk IDP Camp.



10 September 2025 © 2025 Maxar Technologies



## Naivasha Market, Abu Shouk IDP Camp, El-Fasher

### CONFLICT-RELATED DAMAGE OBSERVED BETWEEN 30 AUGUST-10 SEPTEMBER 2025

Analysis of satellite imagery collected between 30 August and 10 September 2025 over El-Fasher shows damage to several structures from likely munition impacts in the Naivasha Market located in the Abu Shouk IDP Camp.



30 August 2025 © 2025 Maxar Technologies



10 September 2025 © 2025 Maxar Technologies

Sheikh Mohammed Suleiman Mosque, Naivasha  
Market, Abu Shouk IDP Camp

CONFLICT-RELATED DAMAGE OBSERVED  
BETWEEN 30 AUGUST-10 SEPTEMBER 2025

Analysis of satellite imagery collected between 30 August and 10 September 2025 over El-Fasher shows damage to a building from likely munition impacts in the Naivasha Market located in the Abu Shouk IDP Camp.



30 August 2025 © 2025 Maxar Technologies



10 September 2025 © 2025 Maxar Technologies



## Naivasha Market, Abu Shouk IDP Camp, El-Fasher

### CONFLICT-RELATED DAMAGE OBSERVED BETWEEN 30 AUGUST-10 SEPTEMBER 2025

Analysis of satellite imagery collected between 30 August and 10 September 2025 over El-Fasher shows damage to a building from likely munition impacts in the Naivasha Market located in the Abu Shouk IDP Camp.



30 August 2025 © 2025 Maxar Technologies



10 September 2025 © 2025 Maxar Technologies

## Abu Shouk IDP Camp, El-Fasher

### CONFLICT-RELATED DAMAGE OBSERVED BETWEEN 30 AUGUST-10 SEPTEMBER 2025



30 August 2025 © 2025 Maxar Technologies

Analysis of satellite imagery collected between 30 August and 10 September 2025 over El-Fasher shows damage to a building from likely munition impacts in the Abu Shouk IDP Camp.



10 September 2025 © 2025 Maxar Technologies



## Al-Rahma Cemetery, Abu Shouk IDP Camp, El-Fasher

GRAVE ACTIVITY OBSERVED BETWEEN  
03 AUGUST-10 SEPTEMBER 2025

Analysis of satellite imagery collected 03 August and 10 September 2025 shows an increase of approximately 190 new mounds at the Al-Rahma Cemetery of the Abu Shouk IDP Camp.



30 August 2025 © 2025 Maxar Technologies



10 September 2025 © 2025 Maxar Technologies



Gravesite, Former UNAMID Compound, El-Fasher

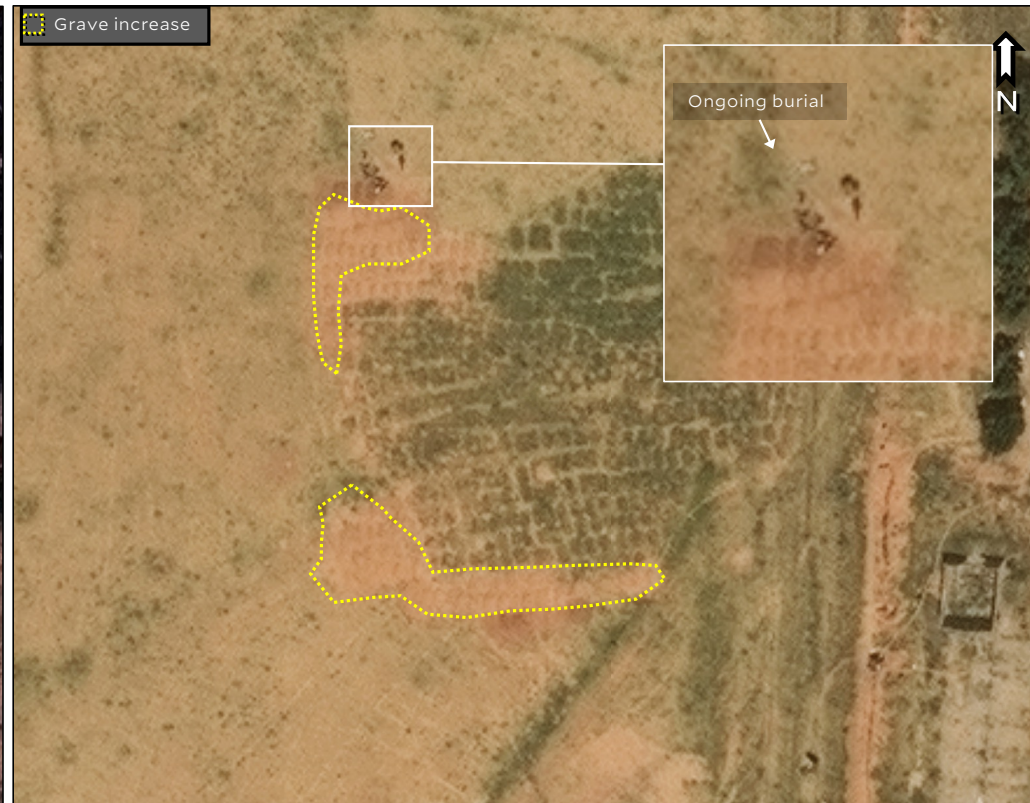
**DISTURBED EARTH OBSERVED BETWEEN  
03 AUGUST-10 SEPTEMBER 2025**



09 May 2025 © 2025 Maxar Technologies

Analysis of satellite imagery collected between 03 August and 10 September 2025 over the former UNAMID compound in El-Fasher shows an increase of approximately 50 new grave mounds at a gravesite established against the west wall of the compound.

Also visible in 10 September 2025 imagery is an apparent ongoing burial.



10 September 2025 © 2025 Maxar Technologies



## El-Fasher | 10 September 2025

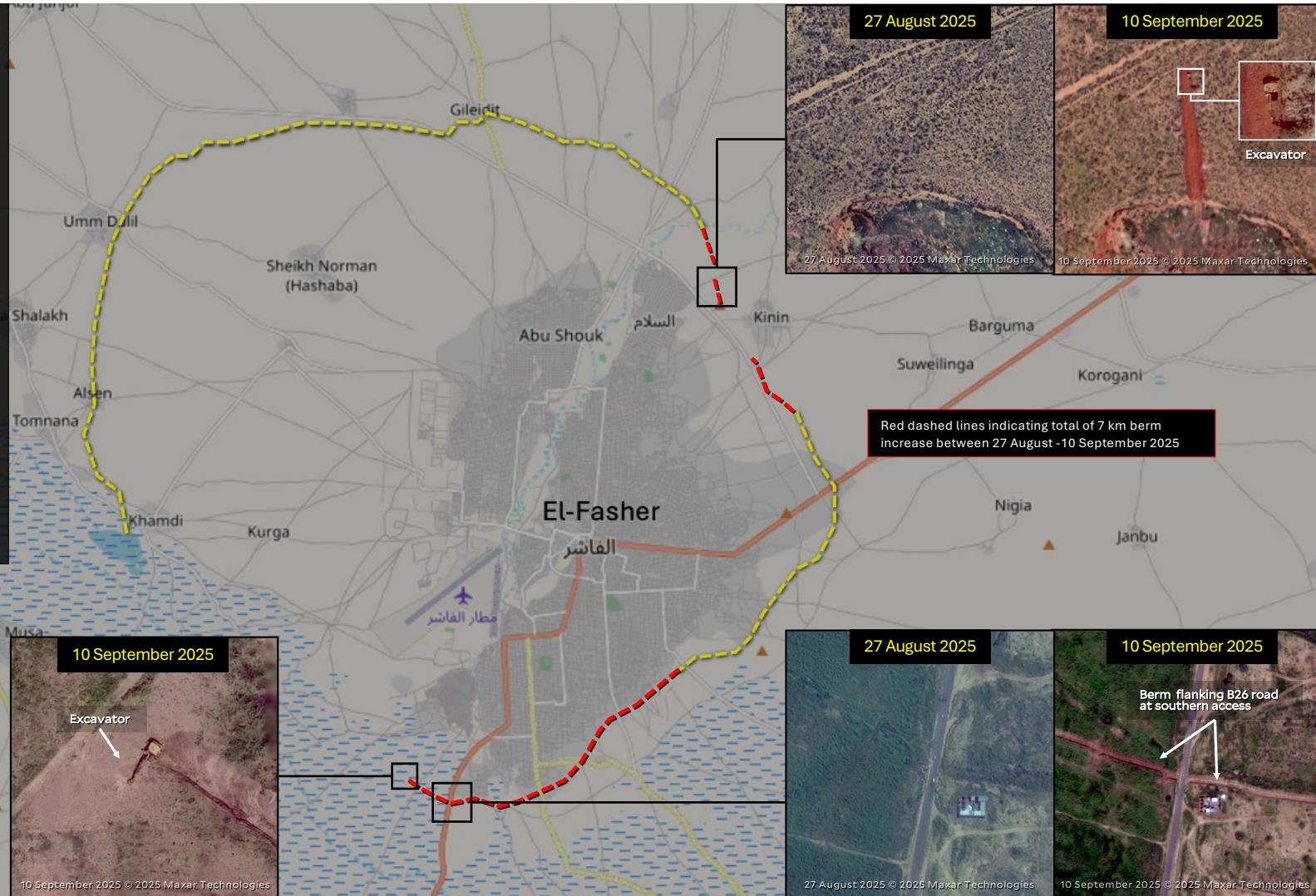
Ongoing berm construction surrounding the city

Analysis of several satellite collected on 10 September 2025 shows that a berm being constructed around the city of El-Fasher has increased by approximately 7 km since 27 August 2025.

Most of this new berm extension (red line) extends south-southwest and flanks the B26 road at the southern access point to the city. Excavators are observed at the berm ends indicating the construction is still in process.

A new segment of the berm is being constructed near a northeastern access point extending from Jebel Halluf.

The entire remainder of the berm (yellow line) has been actively observed being constructed since May 2025.





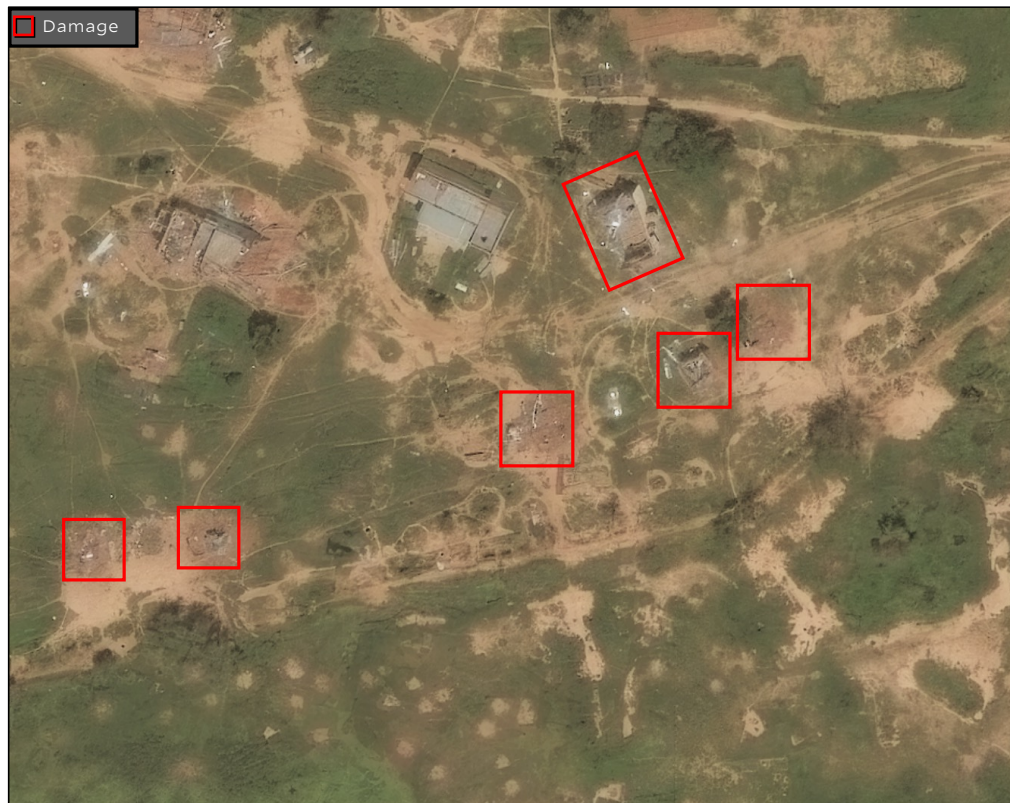
## SAF 6<sup>th</sup> Division, Airport, El-Fasher

### CONFLICT-RELATED DAMAGE OBSERVED BETWEEN 30 AUGUST-10 SEPTEMBER 2025



30 August 2025 © 2025 Maxar Technologies  
Image enhanced with MGP Pro + HD image enhancement

Analysis of satellite imagery collected between 30 August and 10 September 2025 over El-Fasher shows damage to several structures from likely munition impacts at an encampment located at the SAF 6<sup>th</sup> Division Airbase.



10 September 2025 © 2025 Maxar Technologies  
Image enhanced with MGP Pro + HD image enhancement



## SAF 6<sup>th</sup> Division, Airport, El-Fasher

### CONFLICT-RELATED DAMAGE OBSERVED BETWEEN 30 AUGUST-10 SEPTEMBER 2025

Analysis of satellite imagery collected between 30 August and 10 September 2025 over El-Fasher shows damage to the facade and roof of a building at the SAF 6<sup>th</sup> Division Base.



30 August 2025 © 2025 Maxar Technologies



10 September 2025 © 2025 Maxar Technologies



## University of El-Fasher, El-Fasher

### CONFLICT-RELATED DAMAGE OBSERVED BETWEEN 30 AUGUST-10 SEPTEMBER 2025

Analysis of satellite imagery collected between 30 August and 10 September 2025 over El-Fasher shows damage to a building from likely munition impacts through its roof at University of El-Fasher.



30 August 2025 © 2025 Maxar Technologies  
Image enhanced with MGP Pro + HD image enhancement



10 September 2025 © 2025 Maxar Technologies  
Image enhanced with MGP Pro + HD image enhancement



## Water Treatment Plant, El-Fasher

### CONFLICT-RELATED DAMAGE OBSERVED BETWEEN 30 AUGUST-10 SEPTEMBER 2025

Analysis of satellite imagery collected between 30 August and 10 September 2025 over El-Fasher shows damage to a building from likely munition impact through its roof at the Water Treatment Plant in the western part of the city.



30 August 2025 © 2025 Maxar Technologies  
Image enhanced with MGP Pro + HD image enhancement



10 September 2025 © 2025 Maxar Technologies  
Image enhanced with MGP Pro + HD image enhancement



Sheikh Mohammed Suleiman Mosque, Naivasha  
Market, Abu Shouk IDP Camp

CONFLICT-RELATED DAMAGE OBSERVED  
BETWEEN 30 AUGUST-10 SEPTEMBER 2025

Analysis of satellite imagery collected between 30 August and 10 September 2025 over El-Fasher shows damage to a building from likely munition impacts in the Naivasha Market located in the Abu Shouk IDP Camp.



30 August 2025 © 2025 Maxar Technologies



10 September 2025 © 2025 Maxar Technologies

## Mosque, Al-Naeem Neighborhood, Abu Shouk IDP Camp

CONFLICT-RELATED DAMAGE OBSERVED  
BETWEEN 30 AUGUST-10 SEPTEMBER 2025



30 August 2025 © 2025 Maxar Technologies  
Image enhanced with MGP Pro + HD image enhancement

Analysis of satellite imagery collected between 30 August and 10 September 2025 over El-Fasher shows damage to a mosque in Al-Naeem neighborhood and thermal scarring to its roof in the Abu Shouk IDP Camp.



10 September 2025 © 2025 Maxar Technologies  
Image enhanced with MGP Pro + HD image enhancement



## Mosque, El-Fasher University

### CONFLICT-RELATED DAMAGE OBSERVED BETWEEN 30 AUGUST-10 SEPTEMBER 2025

Analysis of satellite imagery collected between 30 August and 10 September 2025 over El-Fasher shows damage to a mosque at El-Fasher University from likely munition impacts.



30 August 2025 © 2025 Maxar Technologies  
Image enhanced with MGP Pro + HD image enhancement



10 September 2025 © 2025 Maxar Technologies  
Image enhanced with MGP Pro + HD image enhancement



**Yale** SCHOOL OF PUBLIC HEALTH  
*Humanitarian Research Lab*

[About](#) | [Reports](#) | [Support](#)