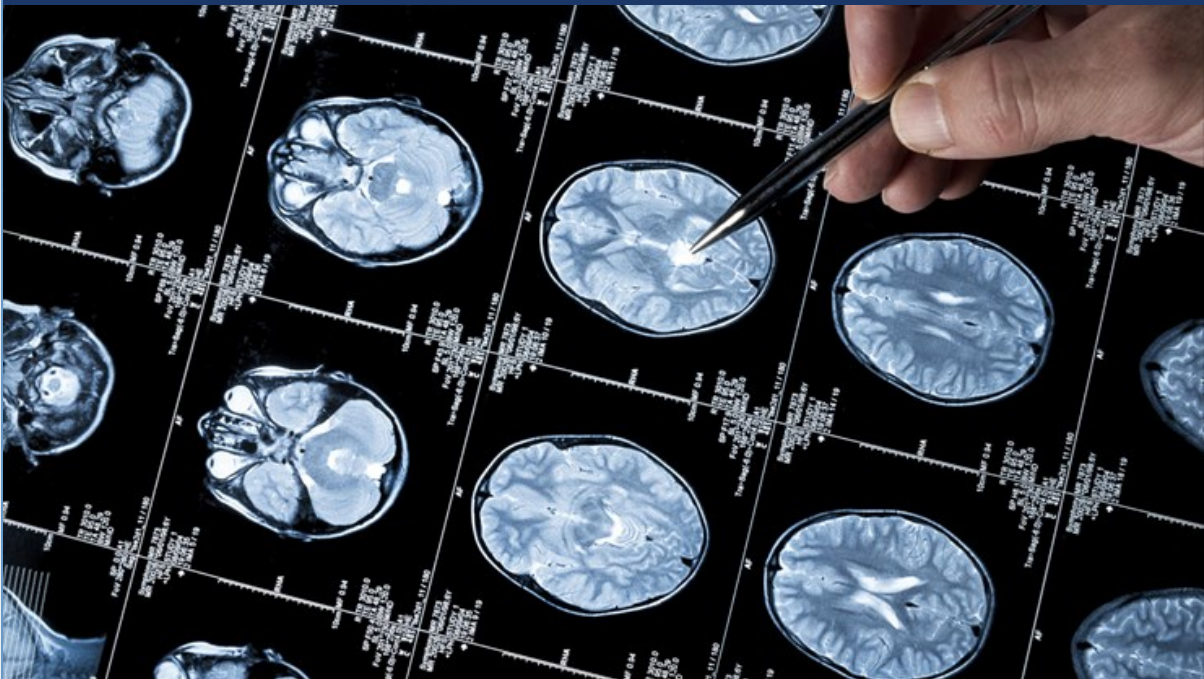


# Alzheimer's Disease Research Center (ADRC)



## Newsletter 12

We are pleased that Carl Hill, PhD, Vice President of Scientific Engagement at the Alzheimer's Association will lead a discussion on health disparities and social determinants of health in Connecticut communities. Please see below for information and registration.

## Community Conversation

# HEALTH DISPARITIES AND SOCIAL DETERMINANTS OF HEALTH: A COMMUNITY CONVERSATION

**Thursday  
July 16, 2020  
10 - 11:30 AM EST**

**Register at  
[alz.org/ct/events](https://alz.org/ct/events)**

*We are all well aware of the health disparities in Alzheimer's and all forms of dementia, as well as in COVID-19.*

*Join us as we bring together representatives of local organizations to discuss health disparities, outcomes and social determinants of health in our Connecticut communities.*

## MODERATOR



**Carl Hill, PhD.**  
V.P., Scientific Engagement, Alzheimer's Association

## PANELISTS



**Rey Martinez,**  
Chief Diversity & Inclusion Officer, Alzheimer's Association



**Florence Johnson**  
President, Northern CT Black Nurses, Inc.



**Steve Hernandez**  
Exec. Dir., CT Commission on Women, Children, Seniors, Equity & Opportunity



**Sarah Lewis**  
V.P., Health Equity, Hartford HealthCare

Thank for your interest in the Yale ADRC. For more information on our studies or to participate in studies please call or visit our website.

**203-764-8100**

**<http://medicine.yale.edu/adrc/>**



[Website](#) [Cores](#) [Education](#) [Faculty](#) [Publications](#) [Events & Seminars](#)



Yale School of Medicine  
333 Cedar Street  
New Haven CT 06510

**CONTACT US**

