

May 18, 2018

## Announcements

### Celebrating our Nurses

It was an honor to join Catherine Lyons, RN, MS, Vice President of Patient Services, at our 9th Annual Oncology Nursing Awards and Breakfast last week. Cathy is an exceptional leader who teaches us the meaning of superior world-class care, and helps us to achieve the highest level of excellence at Smilow Cancer Hospital and our Care Centers. I recognize that all of our nurses provide excellent care every day throughout the year, and each are making a difference in our battle against cancer. Thank you for all you do for our patients and for Smilow Cancer Hospital - I appreciate every one of you.

2018 Awards were presented by Cathy Lyons to:



Oncology Nursing Award for Clinical Excellence: Robin Esposito, RN, Smilow Cancer Hospital Care Center at North Haven

*from the desk of*  
**Charles S. Fuchs, MD, MPH**  
Director, Yale Cancer Center  
and Physician-in-Chief  
Smilow Cancer Hospital

Yale  
NewHaven  
Health  
Smilow Cancer  
Hospital

Yale **CANCER**  
CENTER  
A Comprehensive Cancer Center Designated  
by the National Cancer Institute

### News Center

Latest Articles:





PCA Educational Grant: Delilah Langley, NP1



PCA Educational Grant: Margaret Lewis, Smilow Cancer Hospital Care Center at Derby

### Yale Cancer Center Joins AACR Project GENIE Consortium

[Read More >>](#)



### WHRY funds study to enable early detection, treatment of ovarian cancer

[Read More >>](#)



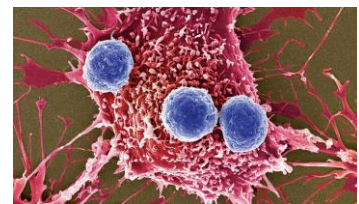
### New cancer immunotherapy drugs rapidly reach patients after approval

[Read more >>](#)



### Free head and neck screenings at Yale New Haven Hospital

[Read More >>](#)





Claire Puklin Award for Outstanding Urologic Nursing: Lori Johnson, RN, Pediatric Urology, joined by Peter Schulam, MD, PhD, Chair of Urology



Frederick A. DeLuca Foundation Scholarship: Ashley Risdon, RN, NP 11

**A promising new cancer drug has hit a major setback, raising questions about whether the field is moving too fast**

[Read More >>](#)



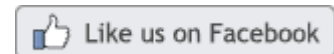
**Men Less Likely to get Genetic Testing**

[Read More >>](#)



Radio show provides cancer coverage  
[Read More >>](#)

**Join Yale Cancer Center on Facebook**



**Latest Posts:**

Please join us for an evening of discussion with two of our renowned brain tumor experts for an understanding of the most effective and comprehensive ways to manage and treat brain tumors. We will explore our comprehensive, patient-focused strategies using current state-of-the-art surgical techniques and clinical trials, as well as cutting-edge additions, including targeting the underlying genetic abnormalities in tumors with



Frederick A. DeLuca Foundation Scholarship: Jennifer D'Angelo, RN, NP 7

**Lori Pickens Named Executive Director of Smilow**

I am pleased to announce that Lori Pickens will join our Smilow Cancer Hospital and Yale Cancer Center team on August 6 as Senior Vice President and Executive Director of Smilow Cancer Hospital. Lori is currently the Associate Vice President for Oncology Services at Duke University Health System, Associate Dean and Administrator of the Duke Cancer Institute at Duke University School of Medicine, and the Service Line Executive of the Cancer Care Collaboration with Wake Medical Health System. She will assume the leadership responsibilities currently held by Abe Lopman, who will retire on October 1 after 10 years of remarkable leadership at Smilow Cancer Hospital.



Lori is a nationally recognized leader in cancer center administration, and has a proven track record of developing successful multidisciplinary oncology programs, robust ambulatory networks, and partnering with senior administrative and clinical leadership. Her background as a successful administrator at a major cancer center will further enhance our high standards of excellence in clinical

advanced precision medicine. Finally, we will focus on ways we can help optimize support for patients and their loved ones as they undergo diagnosis and treatment.

Call 888-700-6543 or register online.



[Read More >>](#)

Please join Yale Cancer Center and Smilow Cancer Hospital faculty and friends for a dessert reception in celebration of the 54th Annual Meeting of the American Society of Clinical Oncology (ASCO).



[Read More >>](#)

Pediatric Cancer Survivors of all ages and their families are welcome to our annual Pediatric Cancer Survivorship Picnic!

Rain or shine, come connect with other families and hang with your amazing doctors and nurses!



[Read More >>](#)

outcomes, cancer research, patient experience, employee engagement, education, and network development. I look forward to working with Lori to advance the mission of our Center. Please join me in welcoming Lori to our Smilow Cancer Hospital and Yale Cancer Center community this summer.

### Annual Retreat a Success

Thank you to all of those who attended our Annual Retreat earlier this week. Now that we have completed our very successful renewal of the CCSG, our Annual Retreat focused on many of the key strategic initiatives that we will develop over the next five years. During the day, we heard outstanding presentations and plans for the Cancer Therapeutic Accelerator Program (CTAP), the new Obesity and Cancer Working Group, our new Center for Immuno-Oncology, and Precision Oncology & Cancer Genome Discovery. In addition, we received updates on a number of vital initiatives, including CTO, Tomorrow, Today (CTOTT), the Functional Genomics Core, the Translational Research Core, and the Center for Precision Cancer Modeling. Our lunch session yielded new ideas for potential projects, many of which I hope will evolve into applications for [Yale Cancer Center Innovation Awards](#). Please note, notification of intent to apply for the Innovation Awards is due Monday, May 21. A special thank you to Dr. Richard Flavell, who provided an insightful keynote lecture on intestinal tumor development to close our day.

### Yale at ASCO

Yale Cancer Center is looking forward to another exciting American Society of Clinical Oncology Annual Meeting, beginning on June 1. If you are attending the meeting, please let [Anne Doerr](#), Director of Media Relations, know you will be in Chicago. A list of Yale participation is below. In addition, we are hosting a Dessert Reception on Sunday evening at 8:30pm at the Hilton Chicago. I hope you will join us.

[Yale at ASCO >>](#)

[Reception >>](#)

For her National Junior Honor Society Leadership Project, Kate Vasquez, a student at Madison Middle School in Trumbull, created hundreds of unique silver and copper bracelets that she sold to raise funds for Smilow Cancer Hospital's Melanoma Program, in honor of her grandfather who was treated at Smilow Cancer Hospital. Kate recently met with Dr. Sajid Khan at the Smilow Cancer Hospital Cancer Care Center in Trumbull to present the proceeds from the sale of her bracelets.


Thank you, Kate!



[Read More >>](#)

### Follow Yale Cancer Center on Twitter

Follow us on [twitter](#)

 Standing ovation at the recent symposium & reception to honor pioneering hospice, palliative care, & oncology nurse, Dr. Ruth McCorkle who is retiring after a distinguished career, 20 years of which have been at Yale.

### Dr. Cecchini to Join GI Program

Michael Cecchini, MD, will join the Gastrointestinal Cancers Program at Smilow Cancer Hospital on July 1. A past recipient of our Annual Fellows Award for Outstanding Research in Medical Oncology, Dr. Cecchini will complete his fellowship in the Yale Medical Oncology-Hematology Fellowship Program next month.

Dr. Cecchini received his medical degree from Albert Einstein College of Medicine and completed his residency at Yale New Haven Hospital. During his fellowship, he received a Young Investigator Award from the Conquer Cancer Foundation to support research on metastatic gastric cancer.



### Head and Neck Screenings a Success


I would like to take a moment and thank the physicians and volunteers who participated in this year's Head and Neck Cancer Screenings. Our teams conducted free head and neck cancer screenings at Greenwich Hospital, the Park Avenue Medical Center, Yale New Haven Hospital, and Lawrence + Memorial Hospital and screened over 300 people. 32 participants required referrals to our specialists for further evaluation. Thank you again to the entire team from our Head and Neck Cancers Program and our volunteers!


## Notables


**Yale Cancer Center**, along with **Dr. Vincent DeVita, Jr., Dr. Patricia LoRusso, Dr. Joan Steitz, and Dr. Lieping Chen**, were honored at a dinner in Hartford last week by the **World Affairs Council of Connecticut** as their 2018 Luminary Award recipient in recognition of global leadership in cancer research and innovation. Please take a few minutes to watch the video they prepared for the evening.


[YCC: Pioneering the Future of Global Health >>](#)


**Craig Crews, PhD**, the Lewis Cullman Professor of Molecular, Cellular and Developmental Biology, and Professor of Chemistry and Pharmacology, is a recipient of the Khorana Prize, from the **Royal Society of Chemistry**. The Khorana Prize recognizes outstanding achievement award for research at the chemistry and life science interface.


 Congratulations to @CraigMCrews for winning the 2018 Khorana prize from the Royal Society of Chemistry!


 "There are 14 types of #cancer associated with obesity and 1/3 of the American population is defined as obese (BMI>30). The incidence of obesity-related cancers are only predicted to rise,"  
.@mirwin\_yale

 YCC faculty attending our annual retreat to share their vision toward the conquest of #Cancer.

 Thank you to @RonDePinho from @MDAndersonNews for taking the time to speak at @YaleCancer Grand Rounds today! "Targeting Cancer Specific Vulnerabilities"

 If you know someone diagnosed with squamous cell lung cancer, please consider telling them about @LungMAP - a precision medicine trial testing several treatments in a single trial. Learn more at <http://www.lung-map.org>

 #ETCTN#SolidTumor Trial Activation: (10170) A Phase 2 Study of AZD1775 in SETD2-Deficient Advanced Solid Tumor Malignancies

 Today's @YaleCancer Answers will review the latest in sun safety and #melanoma awareness. Prepare for the summer months

**Dr. Hari Deshpande**, Associate Professor of Medicine (Medical Oncology) has been named a co-chair of the **Via Oncology Pathways Sarcoma Medical Oncology Committee**. He joins Dr. Warren Chow from City of Hope leading the committee, which is charged with the development of pathways for the treatment of patients with Sarcomas.

## #OOTB Thanks Marion Miller & Kadisha Recalde

YCC #OUTOFTHEBLUETHANKS recently recognized administrative assistant **Marion Miller** for her amazing support in closing a lab recently. Completing all tasks with a smile on her face, her colleagues witnessed her helping in any way she could during this move. Some of these tasks included cleaning the space, throwing stuff out, shredding documents, directing the cleaning crew, organizing painters, requesting leaks in sinks to be fixed, and even handing out water to cleaning crew and movers. Suffice it to say, Marion's help was invaluable to this project. Thank you, Marion!



YCC #OUTOFTHEBLUETHANKS recently recognized **Kadisha Recalde**, Accountant II, for her amazing hard work and dedication on several recent grant submissions. The faculty that she supports have described her as always being pleasant and helpful, even in time sensitive situations. Thank you, Kadisha!

Our #headandneckcancers teams have screened over 200 people over the last few weeks during free screenings. Thank you for your time!

Join our team on June 6 for a presentation on #braintumors: personalizing care for the best outcomes. Physicians, patients, and family are welcome to attend.

Excited to accept #luminary2018 for @YaleCancer! Congrats to our four award winners!

New cancer immunotherapy drugs rapidly reach patients after approval

YCC's @sidichen and @CharlesFuchsMD presented at the 2018 Yale Innovation Summit @YaleOCR. The summit is a day-long event highlighting entrepreneurial Yale faculty and students and the investable innovations coming out of Yale labs.

Yale New Haven Hospital announced the appointment of Lori Pickens to the position of senior vice president and executive director of Smilow Cancer Hospital.

Dr. Saral Mehra was featured on @WTNH this morning to discuss our #headandneck cancer screening

Tune in to this week's Yale Cancer Answers, "Cancer Survivorship." This evening, @tarasanftmd will draw upon her experience as the Medical



Yale Cancer Center's #OUTOFTHEBLUETHANKS program is a staff recognition initiative to show appreciation to employees who have exemplified an above-and-beyond effort or an outstanding contribution to the team. All nominations should be submitted to the Director's Office c/o [Anna Raso](#)

## Employee Profile: Sandy Sabia

Officially, Sandy Sabia's title is Support Coordinator, but behind the scenes, she is the grease that keeps the wheels turning for the Smilow Cancer Hospital Care Center in Torrington. Among her many tasks, Sandy supports staff and physicians with system issues - troubleshooting anything that comes up relating to the phones, email, and EPIC. She also sets up staff and nursing meetings, manages physician templates and schedules, creates reports for the Care Center as well as other sites, helps to resolve patient care issues, and supports Roberta Sterling, RN, MSN, MPH, Clinical Program Manager. She may not always be visible to patients who visit, but Sandy is the silent person in the background improving workflows, processes, and handling tasks that help her colleagues excel in their jobs.



Director for the Smilow Cancer Hospital Survivorship Clinic to discuss the unique challenges and opportunities associated w #survivorship

Our new international comparison of #lungcancer care found plenty of opportunity for improvement in both the US and England.

---

## Calendar

### Developmental Therapeutics Research Seminar

**May 18; 1PM**

Hope 216

*Big Data Approaches to Advance Colorectal Cancer Prevention, Treatment, and Biology*

Charles Fuchs, MD, MPH

[Learn More >>](#)

### Smilow Screening & Prevention Informational Table

**May 19; 1PM**

Cornell Scott - Hill Health Center

*Arts & Ideas Festival / Hillfest*

[Learn More >>](#)

### Smilow Screening & Prevention Informational Table

**May 20; 4PM**

Stetson Branch Library

*Arts & Ideas Festival/Dixwell  
Freddy Fixer Neighborhood*

[Learn More >>](#)

### Smilow Screening & Yale Cancer Answers

**May 20; 7:30PM**

WNPR



"There are days that I can honestly say I could not do my job without Sandy's expertise and support," said Roberta. She continued, "Sandy is an essential member of the Smilow Torrington team and has been for over 23 years. She has a vast knowledge regarding IT, coding, scheduling, reporting, and many other things. She is insightful, and has an excellent knowledge of the overall workflow in the office. She is a key coordinator in many major site projects, including the phone system conversion and recent site renovations. The title of Support Coordinator does not even begin to do justice for everything that Sandy does every day."

Ultimately, Sandy loves her job because every day is different. "I enjoy the people the most - the staff, physicians, and patients, and especially that my job is different every single day," she explained. "I'm able to adapt to change easily and I'm always ready to help when needed."

## Funding Opportunities

### Yale Cancer Innovation Awards

YCC is requesting individual or team proposals for projects that have direct relevance to cancer research. This program is designed to support projects with the potential to significantly impact our understanding of and/or approaches to the prevention, diagnosis, or treatment of cancer.

**Notification of Intent:** May 21, 2018

**Application Deadline:** June 18, 2018

[Learn More >>](#)

### Multiple Myeloma Research Foundation Research Fellow Award Program

The MMRF seeks proposals for the 2018 Research Fellow Award Program, an initiative supporting researchers at the post-doctorate/medical fellow or junior faculty levels working under the supervision or guidance of a research mentor in the multiple myeloma field.

**Application Deadline:** May 25, 2018

[Learn More >>](#)

### The Mark Foundation for Cancer Research Emerging Leader Awards

These signature three-year academic grants totaling \$750,000 will provide support to early career investigators conducting high-risk, high-impact cancer research.

**Letters of Intent Due:** June 4, 2018

### Brain Tumor Awareness Month

Jennifer Moliterno, MD,  
FAANS

[Learn More >>](#)

### Pathology Research in Progress Talks

**May 22; 9:30AM**

TAC N-107

TBA

Emily Wingrove and Yuting Liu

[Learn More >>](#)

### Cancer Prevention and Control Research Seminar May 22; 12PM

YSPH, 103

*Improving the Reach and Effectiveness of Tobacco Treatment for Yale Cancer Patients: A Service Implementation Project*

Lisa Fucito, PhD

[Learn More >>](#)

### YCC Grand Rounds/John Murren Lecture

**May 22; 12PM**

55 Park Street

*Lung Cancer: At the Forefront of Personalized Cancer Care*

Suresh S. Ramalingam, MD

[Learn More >>](#)

### Grand Rounds for Non-Clinicians

**May 23; 12PM**

55 Park Street Auditorium

*Hospice Care*

Laura Lusenbrink

[Learn More >>](#)

### Pharmacology Seminar Series

**May 23; 12:30PM**

[Learn More >>](#)

### **Pew-Stewart Scholars Program for Cancer Research**

Yale Cancer Center is pleased to announce the internal competition for the Pew-Stewart Scholars for Cancer Research Program. The Program supports assistant professors of outstanding promise in science relevant to the advancement of a cure for cancer.

**Deadline for Applications:** June 5, 2018

[Learn More >>](#)

### **Epidemiologic Research on Emerging Risk Factors and Liver Cancer Susceptibility - R01**

The purpose of this FOA is to promote epidemiologic research investigating novel and innovative hypotheses on emerging risk factors and their interplay with established risk factors associated with the development of liver cancer in the United States.

**Application Deadline:** June 5, 2018

[Learn More >>](#)

### **NIH Integration of Imaging and Fluid-Based Tumor Monitoring in Cancer Therapy-R01**

This FOA seeks research project (R01) grant applications describing projects that integrate imaging and fluid-based tumor monitoring (liquid biopsy) assays during cancer therapy in patients to determine the optimal use of those modalities.

**Application Deadline:** June 5, 2018

[Learn More >>](#)

### **NIH End-of-Life and Palliative Care Health Literacy: Improving Outcomes in Serious, Advanced Illness-R01/R21**

This FOA seeks to stimulate research focused on identification of the key barriers to effective end-of-life and palliative care (EOLPC) health literacy in diverse settings and populations.

**Application Deadline:** June 5, 2018

[Learn More >>](#)

### **NIH Biology of Lung, and Head and Neck Preneoplasias-R01/R21**

This Funding Opportunity Announcement (FOA) seeks applications investigating mechanistic and biological aspects of preneoplasia leading to lung, and head and neck (HN) cancers.

Brady Auditorium

*Understanding Metabolic Vulnerabilities in Glioblastoma*

Biplab Dasgupta, PhD

[Learn More >>](#)

### **Smilow Cancer Genetics and Prevention Program Seminar**

**May 24; 2:30PM**

SRC, suites 107-109

[Learn More >>](#)

### **Clinical Neuroscience Grand Rounds**

**May 25; 8AM**

Cohen Auditorium

*IDH Mutation in Glioma*

Daniel Cahill, MD, PhD

[Learn More >>](#)

### **First Annual Yale Cancer Center Trainee Colloquium**

**May 25; 8:30AM**

300 George St., Lecture Hall 157

*Advancing Clinical Care, Research, Education & Training at Yale Cancer Center*

Charles Fuchs, MD, MPH

[Learn More >>](#)

### **Smilow Screening & Prevention Informational Table**

**May 26; 12PM**

Criscuolo Park

*Arts & Ideas Festival/ Fair Haven Neighborhood Festival*

[Learn More >>](#)

### **Yale Cancer Answers**

**May 27; 7:30PM**

WNPR

*Medical Marijuana for Pediatric Patients*

**Application Deadline:** June 5, 2018

[Learn More >>](#)

### **NIH Food Specific Molecular Profiles and Biomarkers of Food and Nutrient Intake, and Dietary Exposure-R01**

The purpose of this FOA is to promote research on food specific molecular signatures and biomarkers of dietary consumption and to promote collaborative interactions among NIH and the USDA-NIFA supported nutrition researchers.

**Application Deadline:** June 11, 2018

[Learn More >>](#)

### **Gabrielle's Angel Foundation for Cancer Research Grants**

The Foundation funds cutting-edge research in the fields of leukemia, lymphoma, and related cancers of the blood. Funds support promising scientists who are applying novel and state-of-the-art techniques to address fundamental problems in their genesis and treatment.

**Internal Deadline:** June 11, 2018

[Learn More >>](#)

### **Alex's Lemonade Stand Psychosocial Grants**

ALSF is committed to addressing the psychosocial and behavioral health outcomes for children diagnosed with cancer and their families. These Grants fill a direct need for research funding by supporting studies that aim to explain and/or improve psychosocial outcomes of those affected by childhood cancer.

**Letters of Intent Due:** June 11, 2018

[Learn More >>](#)

### **U.S. Tobacco Control Policies to Reduce Health Disparities - R21 and R01**

The purpose of this FOA is to support observational or intervention research focused on reducing health disparities in tobacco use in the United States.

**Application Deadline:** June 13, 2018

[Learn More >>](#)

### **Epidemiologic Research on Emerging Risk Factors and Liver Cancer Susceptibility - R21**

The purpose of this FOA is to promote epidemiologic research investigating novel and innovative hypotheses on emerging risk

Prasanna Ananth, MD, MPH

[Learn More >>](#)

### **Pathology Research in Progress Talks**

**May 29; 9:30AM**

TAC N-107

*Yale Genome Editing Center: Services and Resources for Creating and Cryopreserving Genetically Altered Mice*

Timothy P Nottoli, PhD

TBA

Britta Kunkemoeller

[Learn More >>](#)

### **Kavli Institute for Neuroscience Workshop**

**May 29; 1PM**

Hope 216

*Single Cell Genomics in Neuroscience*

Guilin Wang, PhD, In-Hyun Park, PhD, Smita Krishnaswamy, PhD, Marc Hammarlund, PhD, and Steve McCarroll, PhD

[Learn More >>](#)

### **YCC Grand Rounds/Iris Fischer Memorial Lecture**

**May 29; 12PM**

55 Park Street

TBA

Lewis C. Cantley, PhD

[Learn More >>](#)

### **Human and Translational Immunology Seminar**

**May 29; 4PM**

TAC N-203

*Disentangling Host and Microbial Contributions to Drug Metabolism*

Andrew Goodman, PhD

[Learn More >>](#)

factors and their interplay with established risk factors associated with the development of liver cancer in the United States.

**Application Deadline:** June 16, 2018

[Learn More >>](#)

### **NIH Exploratory Grants in Cancer Epidemiology and Genomics Research-R21**

This FOA invites applications for research on cancer epidemiology, genomics, and risk assessment.

**Application Deadline:** June 16, 2018

[Learn More >>](#)

### **NIH Diet and Physical Activity Assessment Methodology-R21**

This Funding Opportunity Announcement (FOA) encourages innovative research to enhance the quality of measurements of dietary intake and physical activity.

**Application Deadline:** June 16, 2018

[Learn More >>](#)

### **NIH Exploratory Grant Award to Promote Workforce Diversity in Basic Cancer Research-R21**

This FOA represents the continuation of an NCI program to enhance the diversity of the pool of the cancer research workforce.

**Application Deadline:** June 19, 2018

[Learn More >>](#)

### **Research Answers to NCI's Provocative Questions - R21 and R01**

The purpose of this FOA is to support research projects designed to solve specific problems and paradoxes in cancer research identified by the NCI Provocative Questions initiative.

**Application Deadline:** June 29, 2018

[Learn More >>](#)

### **Robert E. Leet and Clara Guthrie Patterson Trust Mentored Research Award: Clinical, Health Services and Policy Research**

Two-year Awards of \$90,000 (\$45,000 per year) will be awarded to applicants working in Connecticut, New Jersey and Rhode Island.

**Application Deadline:** July 3, 2018

[Learn More >>](#)

### **Smilow Cancer Genetics and Prevention Program Seminar**

**May 31; 2:30PM**

SRC, suites 107-109

[Learn More >>](#)

### **100 Years of Women at Yale School of Medicine Symposium**

**June 1; 8AM**

Harkness Auditorium

*Celebration and Reflection*

[Learn More >>](#)

---

### **Biostatistics Shared Resource (BSR)**

Drop-In Office Hours  
WWW213

#### **Biostatistics**

Dr. Wei Wei

Thursdays - 9am-1pm

Fridays - 9am-5pm

#### **Bioinformatics**

Drs. Yong Kong and Ying Zhu

Fridays - 1pm-5pm

---

### **Submissions**

Please submit your recent publication and grant announcements to:

#### **Renee Gaudette**

Director, Public Affairs and Communications

 Forward to a Friend

### **Damon Runyon-Rachleff Innovation Award**

Designed to provide support for the next generation of exceptionally creative thinkers with "high-risk/high-reward" ideas that have the potential to significantly impact our understanding of and/or approaches to the prevention, diagnosis or treatment of cancer.

**Application Deadline:** July 6, 2018

[Learn More >>](#)

### **Program in Innovative Therapeutics for Connecticut's Health (PITCH)**

With a grant from the State of Connecticut's Bioscience Innovation Fund, this three-year, \$10 million-dollar program, provides translational research resources to generate prototype therapeutics that address unmet clinical needs. Contact [francine.carland@yale.edu](mailto:francine.carland@yale.edu) for more information.

**Application Deadline:** July 15, 2018

[Learn More >>](#)

---

## **Recent Publications**

### **Comparative Effectiveness of Thermal Ablation, Surgical Resection, and Active Surveillance for T1a Renal Cell Carcinoma: A Surveillance, Epidemiology, and End Results (SEER)-Medicare-linked Population Study.**

Xing M, Kokabi N, Zhang D, Ludwig JM, Kim HS.

Radiology. 2018 May 8:171407.

[Read More >>](#)

### **Exploratory Analysis of Brigatinib Activity in Patients With Anaplastic Lymphoma Kinase-Positive Non-Small-Cell Lung Cancer and Brain Metastases in Two Clinical Trials.**

Camidge DR, Kim DW, Tiseo M, Langer CJ, Ahn MJ, Shaw AT, Huber RM, Hochmair MJ, Lee DH, Bazhenova LA, Gold KA, Ou SI, West HL, Reichmann W, Haney J, Clackson T, Kerstein D, Gettinger SN.

J Clin Oncol. 2018 May 16:JCO2017775841.

[Read More >>](#)

### **Extracorporeal Photochemotherapy Drives Monocyte-to-Dendritic Cell Maturation to Induce Anti-Cancer Immunity.**

Ventura A, Vassall A, Robinson E, Filler R, Hanlon D, Meeth K, Ezaldein H, Girardi M, Sobolev O, Bosenberg MW, Edelson RL.

Cancer Res. 2018 May 15.

[Read More >>](#)

**Genome-wide association analysis identifies a meningioma risk locus at 11p15.5.**

Claus EB, Cornish AJ, Broderick P, Schildkraut JM, Dobbins SE, Holroyd A, Calvocoressi L, Lu L, Hansen HM, Smirnov I, Walsh KM, Schramm J, Hoffmann P, Nöthen MM, Jöckel KH, Swerdlow A, Larsen SB, Johansen C, Simon M, Bondy M, Wrensch M, Houlston R, Wiemels JL.

Neuro Oncol. 2018 May 12.

[Read More >>](#)

**Genomic Heterogeneity and the Small Renal Mass.**

Ueno D, Xie Z, Boeke M, Syed J, Nguyen KA, McGillivray P, Adeniran A, Humphrey PA, Dancik GM, Kluger Y, Liu Z, Kluger HM, Shuch B.

Clin Cancer Res. 2018 May 14.

[Read More >>](#)

**Adjuvant therapy in major salivary gland cancers: Analysis of 8580 patients in the National CancerDatabase.**

Cheraghlou S, Kuo P, Mehra S, Agogo GO, Bhatia A, Husain ZA, Yarbrough WG, Burtness BA, Judson BL.

Head Neck. 2018 May 13.

[Read More >>](#)

**Treatment delays in laryngeal squamous cell carcinoma: A national cancer database analysis.**

Morse E, Fujiwara RJT, Judson B, Mehra S.

Laryngoscope. 2018 May 14.

[Read More >>](#)

**Distinctive features of gastrointestinal stromal tumors arising from the colon and rectum.**

Zhu R, Liu F, Grisotti G, Pérez-Irizarry J, Cha CH, Johnson CH, Boffa DJ, Han D, Johung KL, Zhang Y, Khan SA.

J Gastrointest Oncol. 2018 Apr;9(2):231-240.

[Read More >>](#)

**Adherence to American Cancer Society Guidelines on Nutrition and Physical Activity in Female Cancer Survivors: Results From a Randomized Controlled Trial (Yale Fitness Intervention Trial).**

Park SH, Knobf MT, Kerstetter J, Jeon S.

Cancer Nurs. 2018 May 9.

[Read More >>](#)

**Hyperbilirubinemia following lenalidomide administration.**

Azmy V, Neparidze N.

Clin Case Rep. 2018 Mar 13;6(5):875-877.

[Read More >>](#)

**The genetic and molecular pathogenesis of myelodysplastic syndromes.**

Shallis RM, Ahmad R, Zeidan AM.

Eur J Haematol. 2018 May 9.

[Read More >>](#)

**PTEN Regulates Non-Homologous End Joining by Epigenetic Induction of NHEJ1/XLF.**

Sulkowski PL, Scanlon SE, Oeck S, Glazer PM.

Mol Cancer Res. 2018 May 8.

[Read More >>](#)