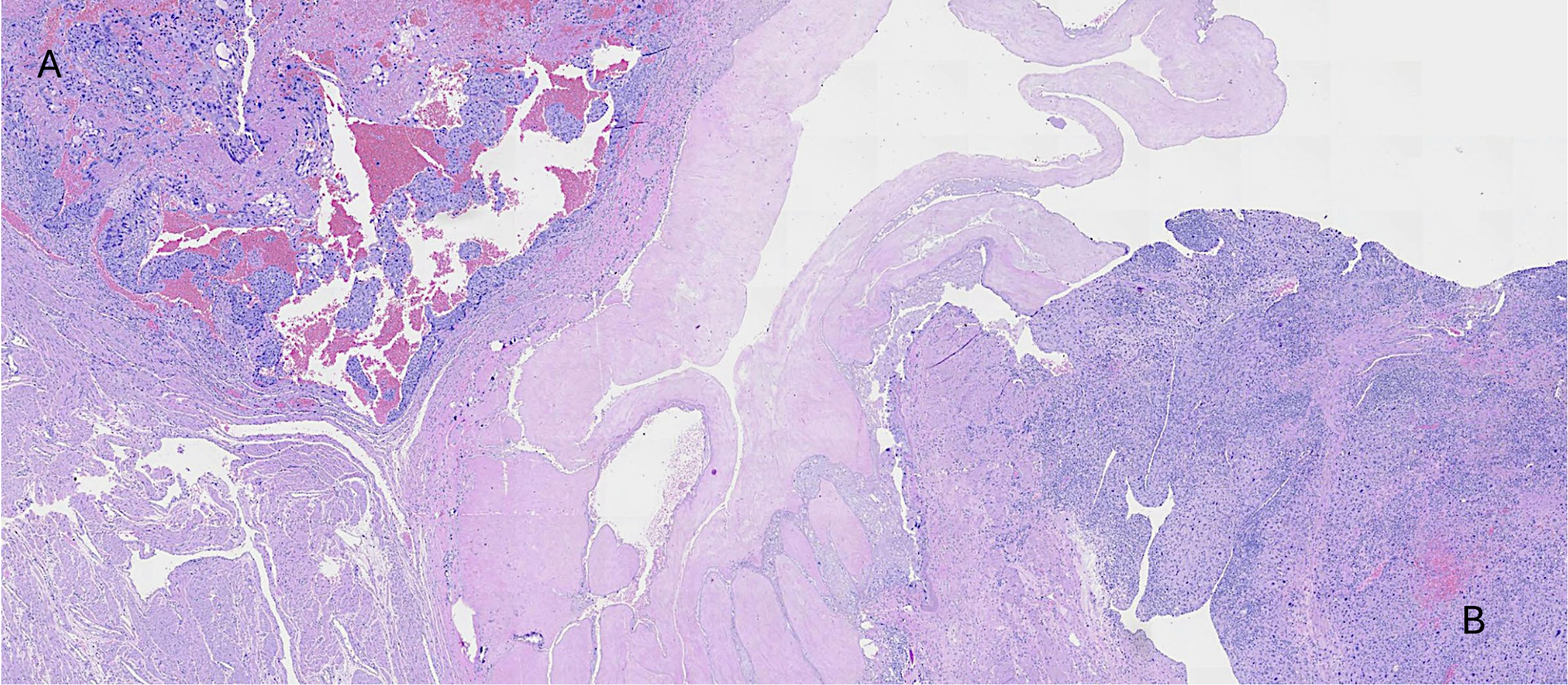




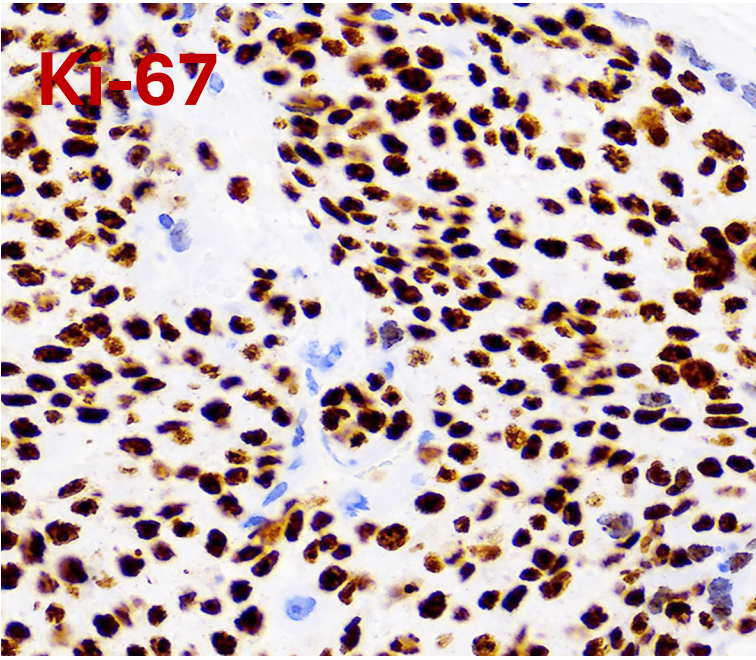
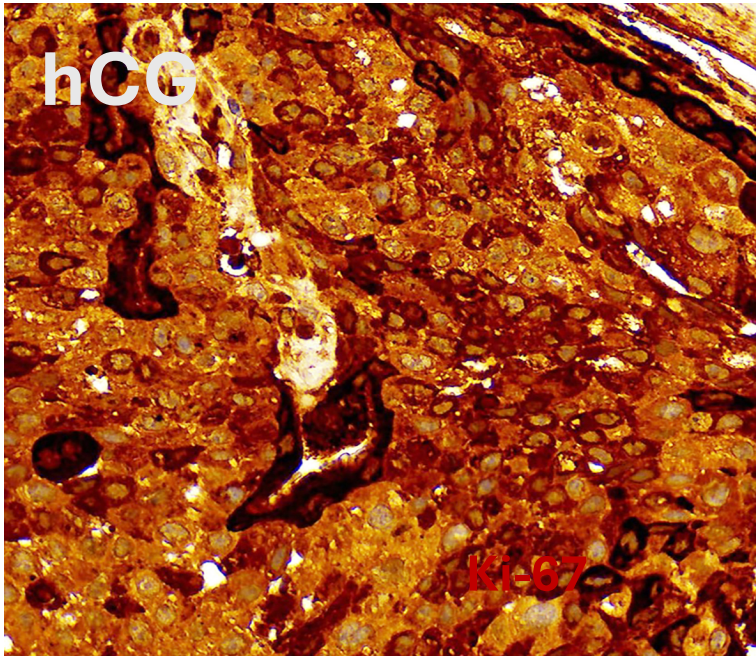
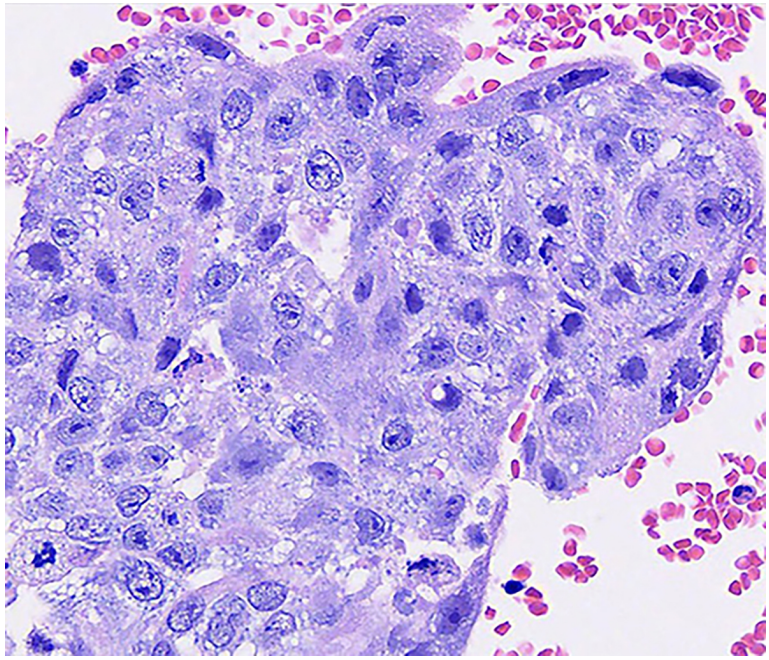
38 years-old woman presenting with 2 cm uterine mass and serum hCG of 744,828 mIU/ml.



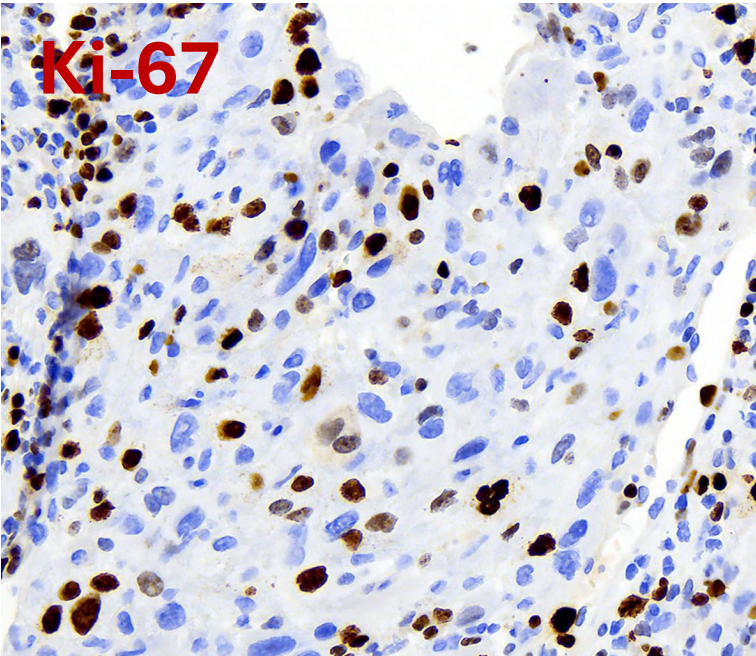
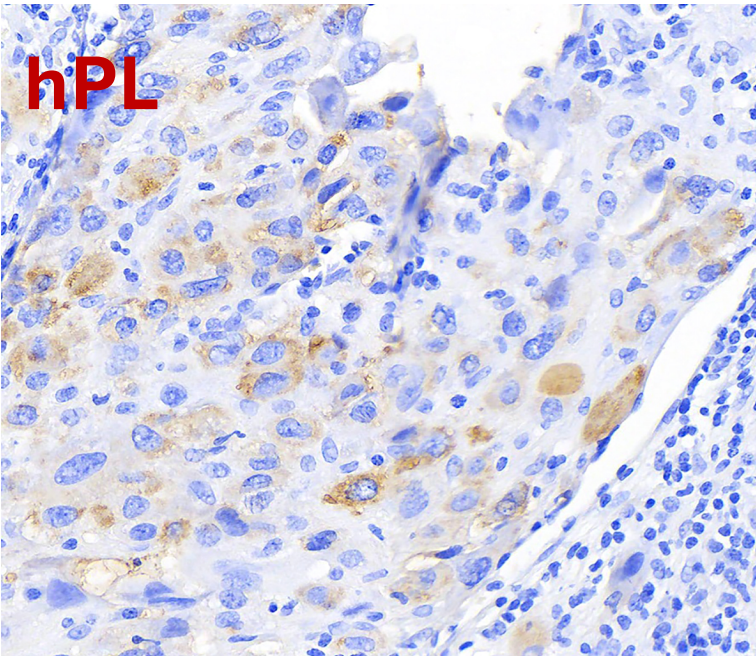
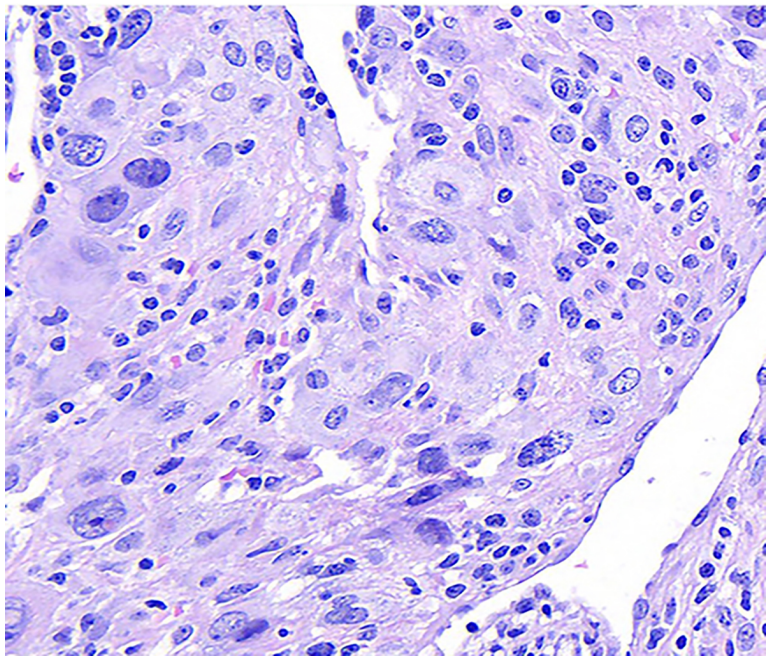
A

B

Area A



Area B



Upon hysterectomy, a 2.0 cm ill-defined, rubbery mass was identified involving the right cornu, extending through the myometrium. This lesion, which represented 10% of the tumor, displayed a well-circumscribed area characterized by biphasic proliferation of mononuclear trophoblastic cells, rimmed by syncytiotrophoblast cells (Area A). The tumor cells were diffusely positive for beta-HCG, with individual cell positivity for p63, and exhibited a Ki-67 labeling index of 90%. The majority of the neoplastic component (Area B) consisted of diffuse proliferation of large mononuclear trophoblast. Immunohistochemical profiling revealed scattered cell positivity for hCG, diffuse positivity for hPL, and negative staining for p63. The Ki-67 labeling index for this area was 20%.

Final Diagnosis: Mixed Choriocarcinoma and Placental Site Trophoblastic Tumor

Refer Y-GTD case of March 2024 for a detailed discussion on mixed trophoblastic tumors