



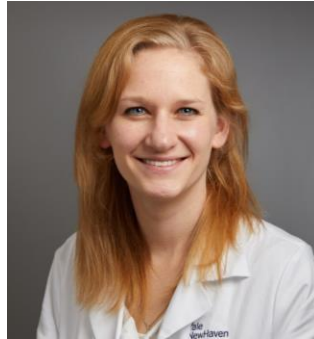
## State CHEST Conference

YaleCME  
CONTINUING MEDICAL EDUCATION

Presented by

Yale School of Medicine's Department of Internal Medicine - Section of Pulmonary, Critical Care & Sleep Medicine

# Respiratory Disease Following 9/11



## Amy Korwin, MD

Clinical Fellow of Pulmonary Medicine  
Yale School of Medicine

Wednesday, September 11, 2019, 3-4 pm  
Fitkin Amphitheatre

Moderator: Carrie Redlich, MD

*There is no corporate support for this activity*

This course will fulfill the licensure requirement set forth by the State of Connecticut

### **ACCREDITATION**

The Yale School of Medicine is accredited by the Accreditation Council for Continuing Medical Education to provide continuing medical education for physicians.

### **TARGET AUDIENCE**

Attending physicians, house staff/fellows, medical students, nurses, physician assistants.

### **NEEDS ASSESSMENT**

The terrorist attacks of September 11, 2001 resulted in many survivors and first responders having a complex environmental exposure, which led to variable pulmonary pathology, among other diseases. A significant portion of the exposed people were firefighters, who had pre-existing respiratory data and were adherent to stringent post-exposure monitoring. The data from this population provides a unique opportunity to learn about environmental exposures, respiratory protection, and disaster preparedness for the future

### **LEARNING OBJECTIVES**

At the conclusion of this activity, participants will learn to:

1. Understand the basics of inhalational injury and environmental exposures.

2. Learn about acute and chronic respiratory disease following exposures on September 11, 2001.
3. Discuss various forms of respiratory protection.

### **DESIGNATION STATEMENT**

The Yale School of Medicine designates this live activity for 1 *AMA PRA Category 1 Credit(s)*<sup>™</sup>. Physicians should only claim the credit commensurate with the extent of their participation in the activity.

### **FACULTY DISCLOSURES**

Richard Matthay, MD, Course Director – No conflicts of interest  
Amy Korwin, MD – No conflicts of interest

It is the policy of Yale School of Medicine, Continuing Medical Education, to ensure balance, independence, objectivity, and scientific rigor in all its educational programs. All faculty participating as speakers in these programs are required to disclose any relevant financial relationship(s) they (or spouse or partner) have with a commercial interest that benefits the individual in any financial amount that has occurred within the past 12 months; and the opportunity to affect the content of CME about the products or services of the commercial interests. The Center for Continuing Medical Education will ensure that any conflicts of interest are resolved before the educational activity occurs.