

November 2022



*A monthly newsletter featuring updates, news you can use, community spotlights, events, and more from the Yale Child Study Center.*

---

## In this edition...

- [Chair's Message](#)
- [Departmental News & Updates](#)
- [News You Can Use](#)
- [Upcoming Events](#)
- [YCSC In the Media](#)
- [YCSC Job Opportunities](#)
- [Recent Publications](#)
- [Giving to the YCSC](#)

---

## Chair's Message

*It was wonderful to see many of you at our Annual*



*Associates Meeting earlier this month. While some were disappointed at our shift from hybrid to all virtual, it seems we have entered a new phase in our nearly post-pandemic world where virtual options are preferred by many – and of course we are not yet out of the metaphorical woods between COVID-19 rates and other respiratory illnesses on the rise. The decision was one erring on the side of caution, and I do appreciate everyone's understanding and flexibility.*

*Indeed, we all maintain flexibility on many levels, including as the 2022-2023 academic year is now in full swing with many events to plan and announcements to share. Thanks to our Grand Rounds committee, we have an excellent lineup of speakers to round out the calendar year, and even more announced for the winter and spring. We have had a very nice turnout of both in-person and virtual participants at these weekly sessions.*

*As we look ahead to what promises to be another busy and bustling holiday season, I find myself reflecting on the many meanings of holidays, as well as the importance of respecting those celebrated by all – whether religious or secular.*

*The end of the year brings many holidays, as across cultures we prepare for winter, the waning of the sun, and the ending of the fall harvest. With our American Thanksgiving holiday around the corner, gratitude is at the forefront, as it should be year-round. I am thankful for all who serve their communities in so many ways – and I am grateful for all of you.*

*I truly cannot thank our community members and our supporters enough for all you do to help promote and move forward the work of the center, and to better the lives of children and families.*

Linda Mayes, MD

*Arnold Gesell Professor of Child Psychiatry, Pediatrics, and Psychology;  
Chair, Yale Child Study Center*

---

---

# Departmental News & Updates

---

Grand Rounds Speakers  
Announced for Spring  
Semester



[Learn More](#)

A Warm Welcome to the  
Newest YCSC  
Community Members



[Learn More](#)

---

Annual Associates  
Meeting Featured Broad  
Array of Research and  
Clinical Work

Virtual Forum for School  
Mental Health Providers  
Supporting Teens a  
Success



[Learn More](#)



[Learn More](#)

---

On-line Training Series  
with Minding the Baby™  
Model Developers:  
Bundled Rate & Student  
Discount Available

Upcoming Comfort  
Ability Program Sessions  
to Help Kids Manage  
Chronic Pain: Enroll by  
November 30, 2022



[Learn More](#)

## THE COMFORT ABILITY



[Learn More](#)

[return to menu](#)

## News You Can Use



On Leadership: Conscious



The Mental Health Wounds of

## Accountability in Clinical Work

[Learn More](#)

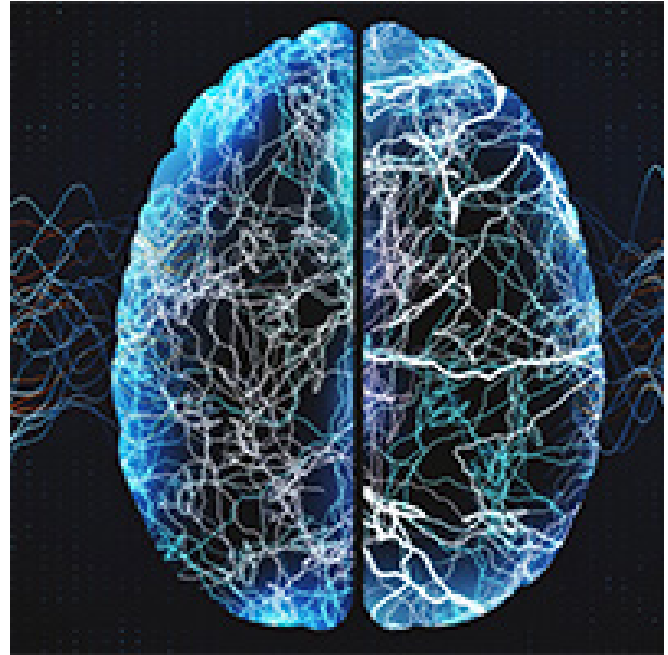
## Our Youth

[Learn More](#)



Let's Read Between the Lines of the 2022 Report Cards on Reading and Math

[Learn More](#)



Yale Study Revises Understanding of How the Brain Processes and Responds to Rewards

[Learn More](#)



## Safe Sleep Guidelines for Babies Parents Need to Know from Yale New Haven Health

[Learn More](#)



## YNHCH Fights 'National Mental Health Emergency' with Behavioral Health in Primary Care

[Learn More](#)



## CHATogether Program Helps AAPI Families Broach Difficult Topics, According to a New Study



## Yale Endocrinology Obesity Medicine: Approaching Obesity as a Complex, Chronic Disease





Learn More

Learn More

---

[return to menu](#)

---

# Upcoming Events

## YCSC Virtual Grand Rounds

Tuesdays 1:00-2:00 p.m.

### **November 22, 2022**

***Blaming Poverty on the Poor: An Analysis of the Origins and Consequences of American Antiwelfarism***

Darren Barany, PhD, MPA

*Professor, Sociology, LaGuardia Community College, City University of New York*

### **November 29, 2022**

***Childhood adversity and mental health: Identifying opportunities to reduce risk and promote resilience across the life course***

Erin Dunn ScD, MPH

*Associate Professor of Psychiatry, Harvard Medical School*

### **December 6, 2022**

#### **Compassionate Care Rounds**

***Navigating the Siloes: Providers Respond when Both Suicidality and Severe Disordered Eating are Present***

Rebecca Kamody, PhD, Assistant Professor

Michael Bloch, MD, MS, Associate Professor

Angie Landeros-Weisenberger, MD, Associate Research Scientist

Ruby Lekwauwa, MD, Assistant Professor

Marta Herger, MD, JD, Assistant Professor

Laurie Cardona-Wolenski, PsyD, Associate Professor

*Yale Child Study Center*



**December 13, 2022**

**Viola Bernard Lecture**

***Diagnosing Depression: Race, Medicine, and Melancholia in the Atlantic Slave Trade***

Carolyn Roberts, PhD

*Assistant Professor, History/History of Science and Medicine, and African American Studies, Yale University*

---

[return to menu](#)

---

## YCSC In the Media



Yale News: *Why Eye Contact is Different in Autism*

[Learn More](#)



Yale News: *Schools of Medicine and Nursing aim to boost diversity*

[Learn More](#)



Parents: *Having a Sibling with Autism Made Me A Better Doctor*

[Learn More](#)

---

[return to menu](#)

---

## YCSC Job Opportunities

A variety of opportunities for talented individuals seeking



to improve the lives of children and families through research, service, and training are currently open at the YCSC. Several excellent [benefits and rewards packages](#) are offered for faculty and staff.

[Learn More](#)

---

[return to menu](#)

---

## Recent Publications

In addition to those shared via the [YCSC website newsfeed](#), select publications by YCSC faculty and staff compiled and listed by the National Institutes of Health (NIH) via [PubMed](#) are available through a monthly report. Recent reports are linked below. *Coming soon: an even broader array of publications from educational and other trade journals included in new [Dimensions](#) reporting system..*

August 2022  
Publications

[View Report](#)

September 2022  
Publications

[View Report](#)

October 2022  
Publications

[View Report](#)

---

[return to menu](#)

---

## Giving to the YCSC

The groundbreaking work of the YCSC would not be possible without the gifts and grants that support our research, clinical care, and educational missions. YCSC donors are essential in helping us to serve children and families in need of care. For more information about planned giving, or how to [make a gift](#),



please contact Zsuzsanna Somogyi at 203-436-8559 or at [zsuzsanna.somogyi@yale.edu](mailto:zsuzsanna.somogyi@yale.edu). Thank you!

[Donate On-line](#)

[return to menu](#)

**FOLLOW US**



Facebook



Instagram



LinkedIn



Twitter



YouTube

**Yale**

[Child Study Center](#)

Copyright © 2022 Yale University • All rights reserved

This email was sent by: Yale School of Medicine  
135 College Street, Suite 100, New Haven, CT, 06510 USA

[Update Your Preferences](#)   [Privacy Policy](#)