

Equitable Breakthroughs in Medicine Development (EQBMED) announces partnership with 14 community and faith-based organizations and professional societies, furthering its mission to foster equitable access to clinical trials.

FAITH-BASED ORGANIZATIONS

CHOOSE HEALTHY LIFE

“Our partnership with EQBMED is grounded in a shared commitment to dismantling barriers to health services and clinical trials in historically underserved communities. Choose Healthy Life (CHL) brings a unique model of community health improvement, rooted in the deep trust and historic presence of the Black Church in our communities. By integrating CHL's faith-based approach with EQBMED's resources and expertise, we are uniquely positioned to make significant strides in advancing health equity. We are grateful for the opportunity to contribute to this transformative endeavor. Together, we will build bridges of trust and access to healthcare that can truly make a difference.”

Rev. Kimberly L. Williams, Executive Director



CONFERENCE OF NATIONAL BLACK CHURCHES

“To effect change, we must meet people where they are, sharing knowledge and information; but in order for the message to be heard, our community must trust the messenger and we have the trust of our community. By joining with institutions like Yale, Vanderbilt, and Morehouse, we can ensure the voices and concerns of our community are front and center in the EQBMED initiative, but more importantly, as trusted messengers, we can make sure our communities have the information needed and have equal access so that we are no longer left out of research.”

Bishop Dennis V. Proctor (AMEZ),
Founding President of the Baltimore Chapter of the Congress
of National Black Churches, Presiding Prelate of the North
Eastern Episcopal District of the AME Zion Church



Equitable Breakthroughs in Medicine Development (EQBMED) is a pioneering partnership committed to transforming the landscape of clinical trials by advancing diversity, transparency, and knowledge. This collaborative, community-based partnership is led by Yale School of Medicine, Morehouse School of Medicine, the Research Centers in Minority Institutions Coordinating Center at Morehouse School of Medicine, and Vanderbilt University Medical Center, and supported by grant funding from PhRMA. By empowering community-based sites and addressing historical disparities, EQBMED is dedicated to creating a more inclusive future in medicine development.

ASSOCIATION OF BLACK CARDIOLOGISTS (ABC)

“ABC is rooted in the belief that societal progress is intrinsically linked to achieving optimal health for everyone. In pursuit of this vision, we are committed to fostering diverse and inclusive participation in groundbreaking clinical trials, with a special focus on enhancing health outcomes in communities of color. Our collaboration with EQBMED amplifies this commitment, enabling us to uplift community voices and work together in creating educational programs and sustainable strategies aimed at addressing the complex challenges of cardiovascular health in diverse populations.”

Paul Underwood, MD,
ABC Board Chair



NATIONAL BLACK NURSES ASSOCIATION (NBNA)

“At NBNA, we provide a forum for collective action by Black nurses to advocate for and implement strategies to ensure access to the highest quality of health care for historically under-represented and marginalized people of color. We are thrilled to partner with EQBMED, to ensure that access includes equity to innovative clinical trials and to ensure our NBNA practitioners have the knowledge and resources to participate as providers at trial sites.”

Dr. Sheldon D. Fields,
PhD, RN, FNP-BC, CRNP, AACRN, FNAP, FAANP, FAAN,
14th President & CEO of NBNA



NATIONAL HISPANIC MEDICAL ASSOCIATION (NHMA) & NATIONAL HISPANIC HEALTH FOUNDATION (NHHF)

“Representation and equity in all aspects of medical care are the reasons we created NHMA and NHHF 30 years ago. We continue to fulfill this promise as we proudly join this project and help bring clinical research opportunities to Latino communities with the goal of improving health outcomes for all individuals.”

Dr. Elena Rios,
President and CEO of the National Hispanic Medical Association
(NHMA) & President of the National Hispanic Health Foundation
(NHHF)



NATIONAL MEDICAL ASSOCIATION (NMA)

“The National Medical Association is committed to improving the quality of health in Black and other systematically disadvantaged communities through our membership engagement, professional development, health education, advocacy, research, and strategic partnerships. We are delighted to join forces with EQBMED to further our mission to expand access to – and ensure equity in – innovative clinical trials for communities of color through sustained partnership and engagement.”

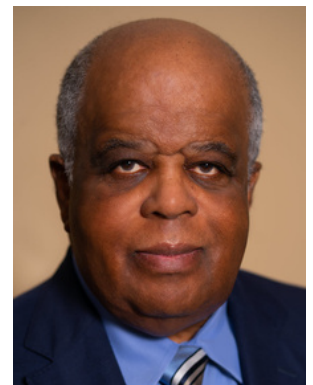
Joy D. Calloway, MBA, MHSA, Executive Director



W. MONTAGUE COBB INSTITUTE

“Through collaboration with EQBMED, the W. Montague Cobb Institute envisions a future of synergy and a revived talent pipeline, where our shared commitment to health equity serves as a beacon, illuminating pathways to transformative change. As a leading institution dedicated to advancing racial and ethnic health disparities research, the W. Montague Cobb Institute brings a rich legacy of scholarship, advocacy, and community engagement to this partnership. Together, we harness our collective expertise to address the systemic inequities that persist in healthcare, ensuring that every individual has access to quality care and opportunities for optimal health outcomes.”

Randall C. Morgan, Jr. MD, MBA, President & CEO



COMMUNITY ACTION AGENCY OF NEW HAVEN

“Community Action Agency of New Haven (CAANH) is excited about the opportunity to partner with the Yale School of Medicine on the EQBMED initiative. Many of our clients often are recipients of poor-quality care across various health issues. EQBMED provides Community Action Agencies (CAA’s) the opportunity to begin making a meaningful difference in the lives of the individuals and families we serve.”

Amos Smith, *President & CEO*



COMMUNITY EDUCATION GROUP

“At Community Education Group (CEG), we are excited to collaborate with Yale University on the EQBMED project. This partnership represents a significant step forward in our commitment to enhancing health equity and access to quality care for underrepresented communities. By working together, we aim to address the disparities in clinical research and care, with a particular focus on increasing diversity, equity, and inclusion for Black, Hispanic, and Latino individuals. Our collective efforts will pave the way for more inclusive health solutions and contribute to a healthier, more equitable future for all.”

A. Toni Young, *Executive Director & Founder*



EMERSON CLINICAL RESEARCH INSTITUTE

“Emerson Clinical Research Institute is thrilled to join forces with the Yale School of Medicine for the EQBMED initiative. Our Institute is dedicated to facilitating the participation of underserved patients in clinical trials, irrespective of their ethnic background, legal status, or socioeconomic standing while striving to modernize and enhance the development of existing and novel treatments. This collaboration is how we can make substantial and tangible differences in the lives of the communities we serve.”

Fabian Sandoval, MD, *CEO & Research Director*



THE BALM IN GILEAD

“For 36 years, The Balm In Gilead has worked to reverse health disparities that diminish or shorten the lives of African Americans. We are honored to be an EQBMED community partner and look forward to assisting Black faith communities in educating their members about the vital role clinical trials play in securing the health of our families and communities.”

Dr. Pernessa C. Seele, Founder & CEO



URBAN MARKETING NETWORK

“We at the Urban Marketing Network and the Creative Gods Agency are excited to be a part of this project. Engaging the community in a meaningful way is paramount to us, and we are honored to play a role in connecting the dots. Together, we look forward to making a positive impact and fostering connections that will benefit all involved.”

Scot Esdaile, CEO of Urban Marketing Network and President of the Connecticut State Conference of NAACP



URBAN LEAGUE OF SOUTHERN CONNECTICUT

“Embracing diversity in clinical trials isn't just about representation; it's about forging pathways to equitable medical breakthroughs. The Urban League of Southern Connecticut is excited to play a role in shaping the conversation on equitable medical breakthroughs by leveraging its position as a trusted community organization by actively engaging with diverse communities across Southern Connecticut, facilitating discussions on the importance of diversity in clinical trials and its impact on health equity.”

Virginia T. Spell, Acting CEO



YALE SCHOOL OF MEDICINE

“Yale School of Medicine has been working to increase diversity within clinical trials through groundbreaking community partnerships and initiatives for more than a decade, which has been the foundation of much of our EQBMED work. We are honored this tremendous group of professional societies and community and faith-based organizations have agreed to partner with us in establishing a new infrastructure that will positively impact clinical trial diversity.”

Nancy J. Brown, MD,
Jean and David W. Wallace Dean of Yale School of Medicine

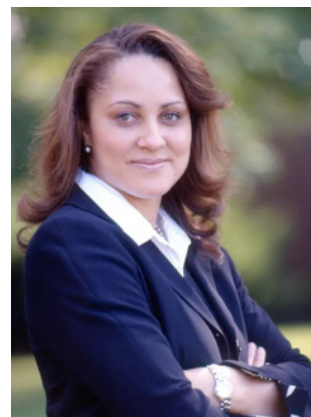


“Our collaboration with these esteemed partners is critical to enhancing clinical trial diversity beyond metrics. This collection of organizations is unique— with various focus areas, brought together under one concentrated effort in furthering clinical trial diversity. With the collective knowledge, valued trust, and deep community ties of our partners, we are creating an accessible landscape for medical research, and ultimately driving more equitable breakthroughs in healthcare”



Marcella Nunez-Smith, MD, MHS,
*Associate Dean for Health Equity Research, and
C.N.H. Long Professor of Internal Medicine,
Public Health, and Management at Yale University*

“These collaborations are essential in furthering EQBMED's goal of advancing equity and access to innovative clinical trials. Through our combined commitment to fostering diversity in clinical trials, we can continue to forge a path toward a more inclusive landscape for medical research. We find ourselves at an exciting juncture, having deliberately pursued our objectives to cultivate significant bonds with both our sites and communities.”



Tesheia Harris (Johnson), MBA, MHS,
*Chief Strategy Officer at Yale Center for Clinical
Investigation (YCCI) at Yale School of Medicine*

NETWORK PARTNERS

MOREHOUSE SCHOOL OF MEDICINE

“The significance of ensuring communities of color are co-creating with our clinical trial efforts cannot be emphasized enough. Community-based organizations bring established relationships and firsthand insights about individuals' concerns, and this information can help us better overcome any hesitancy they may have. By harnessing this collective expertise, we are rolling out focused



initiatives that tackle the unique needs and obstacles encountered by the communities we serve”

Priscilla Pemu, MD, MS, FACP
Associate Dean for Clinical Research and Professor of Medicine at Morehouse School of Medicine

RESEARCH CENTERS IN MINORITY INSTITUTIONS COORDINATING CENTER (RCMI-CC)

“Professional societies like the Association of Black Cardiologists (ABC) and the National Medical Association (NMA), represent frontline physicians with longstanding commitment to serving African American communities and advancing health equity. EQBMED is partnering with the ABC, NMA and other dynamic organizations whose members represent trusted voices to amplify our collective efforts and sustain access of diverse patients to clinical trials.”



Elizabeth Ofili, MD, MPH, FACC
Professor of Medicine (Cardiology); Principal Investigator of Research Centers in Minority Institutions Coordinating Center (RCMI-CC), Morehouse School of Medicine

VANDERBILT UNIVERSITY MEDICAL CENTER

“Together, we are committed to addressing the challenges inherent to diversifying participation in clinical trials so that the best medical evidence is available, applicable and delivered for the benefit of all. Accomplishing this requires the efforts and talents of a diverse group of partners including clinical research sites and professional organizations that will develop and implement new approaches to conducting groundbreaking research in a sustainable way that enables equitable and excellent care.”

Peter Embí, MD, MS, Professor and Chair of Biomedical Informatics, and Senior Vice-President for Research and Innovation at Vanderbilt University Medical Center



EQBMED is grant funded by PHRMA

PHARMACEUTICAL RESEARCH AND MANUFACTURERS OF AMERICA (PHRMA)

“This is the next positive step in building and supporting a strong network of community-based clinical trial sites that can lead to institutional change and better health equity. Community partnership is foundational to EQBMED's approach to improving access to clinical trials. Through EQBMED's partnership with these trusted community leaders, the initiative will raise awareness and support that will lead to participation in local sites.”

Stephen J. Ubl, President & Chief Executive Officer

