

DirectConnect

Inside Yale Cancer Center

April 2, 2021

Announcements

Bohdan Pomahac, MD, Appointed Chief of Plastic & Reconstructive Surgery

We are pleased to announce the recruitment of Dr. Bohdan Pomahac as Division Chief of Plastic & Reconstructive Surgery, effective July 1, 2021. Dr. Pomahac joins the Yale Surgery and Smilow Cancer Hospital community from Brigham and Women's Hospital and Harvard Medical School, where he is the Roberta and Stephen R. Weiner Distinguished Chair in Surgery and Director of Vascular Composite Allograft Transplantation program.



A pioneer in his field, Dr. Pomahac's team performed the first three full-face transplant procedures in the United States, and the first successful bilateral upper extremity transplantation in the Northeast. Dr. Pomahac made Brigham and Women's Hospital the world leader in vascularized composite transplantation completing 10 face and 3 bilateral hand transplants.

Dr. Pomahac's expertise will add to a growing portfolio of destination programs in the Division of Plastic & Reconstructive Surgery at Yale, which, since Dr. John Persing's appointment as Chief in 1992, has grown into a multidisciplinary enterprise—with novel programs across Connecticut, including wound healing, craniofacial surgery, melanoma treatment, targeted muscle reinnervation, breast reconstruction, and cutting-edge research in machine learning and 3D printing. Dr. Persing announced his retirement at the end of June and we are grateful for his leadership and dedication over his 29-year career at Yale.

Dr. Laura Baum Appointed at Smilow Cancer Hospital

Laura Baum, MD, MPH, has been appointed an Assistant Professor of Medicine (Medical Oncology) at

Yale Cancer Center and will care

from the desk of

Nita Ahuja, MD, MBA, FACS

Interim Director, Yale Cancer Center
Interim Physician-in-Chief,
Smilow Cancer Hospital

Yale
NewHaven
Health
Smilow Cancer
Hospital

Yale **CANCER**
CENTER
A Comprehensive Cancer Center Designated
by the National Cancer Institute

News Center

Smilow Shares Greenwich: Colorectal Cancer

Colorectal cancer is the 3rd leading cause of cancer

Estimated New Cases			Males		Females		
Prostate	248,530	26%			Breast	281,550	30%
Lung & bronchus	119,100	12%			Lung & bronchus	116,660	13%
*Colon & rectum	79,520	8%			*Colon & rectum	69,980	8%
Urinary bladder	64,280	7%			Uterine corpus	66,570	7%
Melanoma of the skin	62,260	6%			Melanoma of the skin	43,850	5%
Kidney & renal pelvis	48,780	5%			Non-Hodgkin lymphoma	35,930	4%
Non-Hodgkin lymphoma	45,630	5%			Thyroid	32,130	3%
Oral cavity & pharynx	38,800	4%			Pancreas	28,480	3%
Leukemia	35,530	4%			Kidney & renal pelvis	27,300	3%
Pancreas	31,950	3%			Leukemia	25,560	3%
All Sites	978,250	100%			All Sites	927,910	100%

Watch Now

Smilow Cancer Hospital's Dr. Lynn Tanoue discusses new lung cancer screening guidelines on FOX61

for patients as part of the Smilow Cancer Hospital Center for Gastrointestinal Cancers and the Smilow Palliative Care Program. Dr. Baum's research focuses on gastrointestinal cancers, palliative care, and health services. This has included research on chemotherapy use near the end-of-life, unused opioids and benzodiazepines remaining after death, and psychosocial outcomes in young adults and caregivers with new cancer diagnoses.



Dr. Baum is currently completing her Master's in Public Health and a fellowship in Hematology/ Oncology at Vanderbilt University and will join Yale Cancer Center and Smilow Cancer Hospital in August. She completed a fellowship in Hospice and Palliative Medicine at The Mount Sinai Hospital, and her residency at New York University Langone Medical Center where she served as a Chief Resident. She received her medical degree from University of Pittsburgh School of Medicine.

Smilow Cancer Hospital Launches Hospitalist Program

Following a careful planning process, we are excited to announce a dedicated hospitalist program for Smilow Cancer Hospital inpatient service. The program is a collaboration between the Yale New Haven Hospital Hospitalist Service and our Smilow Cancer Hospital oncology and hematology units to bring expertise in high-acuity bedside care, evidence-based inpatient medicine, and an understanding of complex hospital systems to our oncology teams.

Jensa Morris, MD, has been named Director of the Program, and will lead the service of 4 hospitalists initially with planned expansion to additional disciplines throughout Smilow in subsequent years. Dr. Morris joined YNH in 2002 as one of four hospitalists at Yale New Haven Hospital and has focused on medical co-management of orthopedic inpatients over the last 7 years as Medical Director of the Center for Musculoskeletal Care. Throughout the last year, Dr. Morris and her hospitalist colleagues, along with the outstanding Yale New Haven nursing staff, have done Herculean work caring for admitted COVID+ patients. In 2006, she was honored with a Yale New Haven Hospital Hero Service Excellence Award and in 2012, Dr. Morris received the American College of Physicians Top Ten Hospitalist Award.



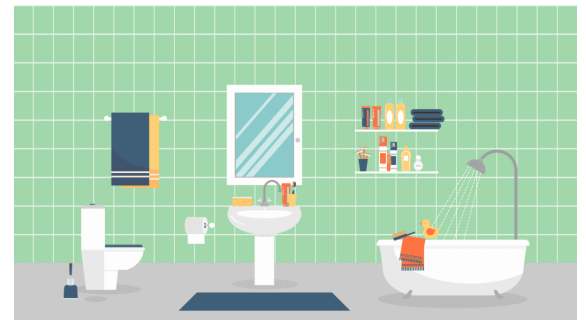
[Watch Now](#)

[Talking about cancer: SCSU professor grapples with language of the 'battle'](#)



[Read More](#)

[Is Home Screening a True Colonoscopy Alternative?](#)



[Read More](#)

[HPV Is the Most Common STI in the US—but Does It Go Away on Its Own? Here's How Doctors Explain It](#)



[Read More](#)

Kerin Adelson, MD, Chief Quality Officer for Smilow Cancer Hospital, has led the planning initiative for the Hospitalist Program along with the leadership and nursing teams at Smilow and with tremendous partnership from Thomas Donahue, MD, Executive Director of Yale New Haven Hospital's Hospitalists Program, and William Cushing, PA-C, Director of APRNs and PAs for the Hospitalist Program. There are three committees with physician, nursing, pharmacy, and care management representation working together to launch the program at Smilow: Hematology, led by Thomas Prebet, MD, PhD, and Jensa Morris, MD; Solid Tumor, led by Elizabeth Prsic, MD, and Jensa Morris, MD; and Education, led by Paul Eder, MD, and Nikolai Podoltsev, MD, PhD. Their planning is quickly moving forward with the assistance of our nursing leaders, including Jill Williams, RN, and Maureen Raucci, RN, and Dr. Morris is already spending time integrating with our teams. The service will officially be instituted in Smilow this summer.

Dr. Allison Campbell Joins Smilow Care Center in Greenwich

The Department of Therapeutic Radiology is pleased to announce the appointment of Allison Campbell, MD, PhD, to Assistant Clinical Professor of Therapeutic Radiology. Dr. Campbell will join the Smilow Cancer Hospital Care Center in Greenwich this month. She recently completed a fellowship in SRS/SBRT as a Radiosurgery Fellow in the Departments of Therapeutic Radiology and Neurosurgery at Yale, where she also completed her residency in Therapeutic Radiology and served as Chief Resident.

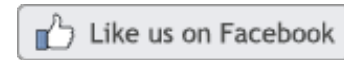


Dr. Campbell received her medical degree and her PhD in Immunobiology from Yale School of Medicine. In 2015, Dr. Campbell received the MD/PhD Award from Yale, which is awarded to an outstanding member of the graduating class who has shown excellence in both research and clinical activities. During her training she focused on the study of fundamental immunobiological pathways that establish and break self-tolerance. Recently, Dr. Campbell's research has analyzed a phase I/II clinical trial assessing the ability of SBRT to elicit abscopal responses in patients with metastatic non-small cell lung cancer who have progressed on immunotherapy.

Search for Section Chief of Surgical Oncology Launched

Dr. Ronald Salem has announced that he will be stepping down from his position as Division Chief of Surgical Oncology after nearly three decades of leadership. Since 1994, Dr. Salem has grown the Division of Surgical Oncology into a multidisciplinary enterprise that includes the sections of Breast Surgery, Hepato-Pancreato-Biliary (HPB) Surgery, and Endocrine Surgery. He will continue his busy clinical

Join Smilow Cancer Hospital on Facebook



As we continue to confront extraordinary circumstances, we are fortunate to have compassionate, world-class physicians at Smilow Cancer Hospital and at our Smilow Cancer Hospital Care Centers. We are so appreciative of our doctors and caregivers for their tireless efforts to treat, heal, and comfort our patients each and every day.



[Read More](#)

As Clinical Operations Manager and Co-Interim Ambulatory Practice Administrator for Smilow Cancer Hospital, Cynthia James was featured in the 'Employee Spotlight' for the Yale African American Affinity Group (YAAA). In her interim role, Cynthia manages the ambulatory clinical operations, making sure patients are receiving the highest quality of care. She also collaborates with Smilow leadership and physicians from Yale Cancer Center and Yale Medicine to ensure they have the adequate and appropriate administrative and operational resources they need to deliver quality, patient-centered care.

As an employee of Yale, Cynthia encourages other employees to take full advantage of the opportunities and resources offered. As a member of YAAA, Cynthia says this group is one of the resources she speaks of. "It is a Yale community of African American men and women who share not just our

ethnicity, but share our place of employment. YAAA is a place we can support and lift each other, learn together, and embrace who we are."

practice and his involvement with the academic community as Lampman Professor of Surgery (Oncology).

The Department of Surgery has partnered with Smilow Cancer Hospital and Yale Cancer Center to initiate a search for the next Division Chief. Leading the search committee is Section Chief of HPB Surgery, Dr. Sajid Khan, and Dr. Pamela Kunz, Leader of the Center for Gastrointestinal Cancers. Additional search committee members include Drs. Alan Dardik, Mehra Golshan, Kimberly Johung, Chen Liu, and Katerina Politi.

Notables

Lieping Chen, MD, PhD, United Technologies Corporation Professor in Cancer Research, Professor of Immunobiology, Dermatology, and of Medicine (Medical Oncology), and Co-Leader of the Yale Cancer Center Cancer Immunology Program, has been elected as a **Fellow of the American Association for Cancer Research (AACR) Academy**.

Dr. Chen joins two other current Yale Cancer Center members of the Academy: Vincent T. DeVita, Jr., MD, and Joseph Schlessinger, PhD.

[Learn More](#)

Anne Chiang, MD, PhD, Associate Professor of Medicine (Medical Oncology), Deputy Chief Medical Officer and Chief Network Officer for Smilow Cancer Hospital, has been appointed an **Executive Officer for SWOG** and will now oversee their portfolio of clinical trials in lung and breast cancers.

[Learn More](#)

Prasanna Ananth, MD, MPH, Assistant Professor of Pediatrics (Hematology/ Oncology), has been awarded a **K08 Career Development Award** from the National Cancer Institute to support her research project, "The Pediatric Advanced Cancer Experience (PACE): Measuring Quality of End-of-Life Care for Children with Cancer." Dr. Ananth's research seeks to define and measure quality of advanced cancer care for children.

Please support our Yale Cancer Center and Smilow Cancer Hospital colleagues during their presentations next week at the AACR Annual Meeting, April 10-15. **Katerina Politi, PhD, David Rimm, MD, PhD, and Lieping Chen, MD, PhD**, will have featured on-demand presentations launched at the beginning of the meeting, while 27 other Yale Cancer Center members will present posters scheduled throughout the week. Download the full **Yale schedule** to support your colleagues.

Call for Abstracts: The Fourth Annual YCC Trainee Colloquium

Yale Cancer Center will hold its Fourth Annual YCC Trainee Colloquium virtually on Friday, May 14, 2021. This forum is for Yale

trainees to highlight their research, exchange ideas, and initiate collaborations. We invite predoctoral MD, PhD, MD-PhD students, postdoctoral associates, postdoctoral fellows, residents, and clinical fellows engaging in cancer research and graduates of the Cancer

Cynthia James, Clinical Operations Manager, and Co-Interim Ambulatory Practice Administrator, is featured in the 'Employee Spotlight' for the Yale African American Affinity Group (YAAA)



[Read More](#)

Dr. Roy Herbst joined us on Yale Cancer Answers on Connecticut Public Radio, WNPR, to discuss exciting advances in the treatment of lung cancer, including an FDA approval based on a clinical trial at Smilow Cancer Hospital. Tune in to learn more, or download our weekly podcast on iTunes.



[Read More](#)

MyPAC (My Priorities in caring for children with Advanced Cancer) is a research study, led by Yale Cancer Center and Yale School of Medicine, seeking to improve quality of healthcare for children with advanced cancer. If you have lost a child to cancer, we would appreciate learning from your experiences. Participation in this study involves a one-time confidential online survey that takes 10-15 minutes to complete. Participants will receive a \$25 electronic gift card in exchange for their time.



Biology Training Program to submit abstracts describing their work.

The colloquium will include presentations from trainees in the following four areas: 1) Basic Science Research and Bioinformatics, 2) Translational Research, 3) Clinical Research, 4) Population Science, Prevention and Outcomes Research. The Yale Cancer Center Education Committee will review all abstracts and make selections for oral presentations. Each presentation will be 10 minutes, and presenters will be notified by May 4, 2021. Four Research Excellence Prize recipients will be selected from among the oral presentations. Winners will be announced during the colloquium and each awardee will receive an award certificate and an award of \$250.

We understand that your research progress may have been delayed due to the COVID-19 shutdown, and we encourage you to submit the data that you have. We will consider this important factor when we judge your work.

Eligibility

- Current Yale MD, PhD, and MD-PhD students
- Current Yale postdoctoral associates, postdoctoral fellows, residents, and clinical fellows
- Pre- and postdoctoral trainees of the Cancer Biology Training Program
- Abstract submission must be approved by the mentor

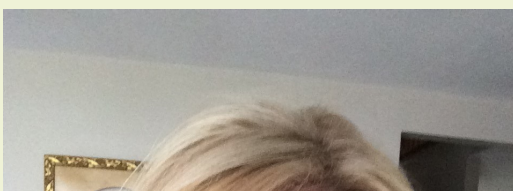
Submission Guidelines:

- Abstracts should be 300 words or less, and may include one figure
- The deadline for abstract submission is April 26, 2021 at 11:59pm EST
- Application [submission link](#)

Employee Profile: Lauren Mallette

For the past six years, Lauren Mallette has been in charge of coordinating 16 separate teams as Smilow Tumor Board Administrator. Tumor boards are considered an essential component of patient care, and involve different backgrounds, specialties, and expertise that may include surgeons, radiation oncologists, pathologists, medical oncologists, and other

disciplines, so that all perspectives can be discussed concerning individual patient cases.



Yale Cancer Center is conducting a study to improve healthcare for children with advanced or incurable cancer.

If your family has lost a child to cancer, we would appreciate the opportunity to learn from your experiences.

Visit our site to learn more:
<https://m.yale.edu/mypac>

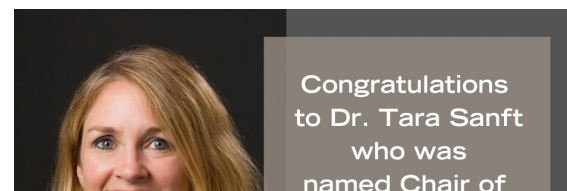
[Read More](#)

When lung cancer and breast cancer relapse, they often metastasize in the brain. The tumors that arise in the brain develop novel characteristics, differences that often favor resistance to existing drug therapies and create opportunities for new detection and treatment approaches for Yale Cancer Center researchers.



[Read More](#)

Congratulations to Tara Sanft, MD, Chief Patient Experience Officer, Director of the Smilow Cancer Hospital Survivorship Clinic, and Associate Professor of Medicine (Medical Oncology), who was recently named Chair of the National Comprehensive Cancer Network (NCCN) Survivorship Committee. Dr. Sanft has served on the panel since 2014 and has been Vice Chair since 2017. The NCCN survivorship guidelines are downloaded nearly 50,000 each year and were recently revised and published in December.



The tumor board department at Smilow Cancer Hospital is highly regarded nationally as one of the largest and well-run tumor boards. Most of them meet weekly, and Lauren is responsible for pulling together all of the information needed for each case, which includes imaging and pathology results. After pulling the information from EPIC, Lauren puts together an agenda for each tumor board.



“There is no room for error as patients rely on tumor boards to help direct their treatment plan,” said Lauren. “Privacy is paramount, and I am responsible for the onboarding of new Care Center faculty and fellows that request to join, as well as initiating and implementing new policies and procedures as needed. The metrics of each case are reported to the Cancer Committee quarterly and annually. It is a lot of work, but I love what I do.”

Lauren commented that since COVID, the tumor boards have been just as successful in the virtual format. She quickly transferred everything over to Zoom and trained those that needed help so they could continue to participate. “Ever since Lauren has become the Tumor Board Administrator, the Tumor Board conferences have run very smoothly,” said Todd Wilcox, MPA, Manager of Smilow Operations. “The level of support she always delivers to the medical providers is extraordinary.”

Recent Publications

Kawalerski R. R., Leach S. D., Escobar-Hoyos L. F.
Pancreatic cancer driver mutations are targetable through distant alternative RNA splicing dependencies.

Oncotarget. 2021; 12: 525-533.

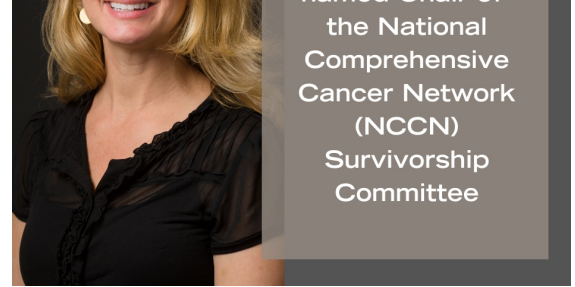
[Read More](#)

Du, L., Yau, C., Brown-Swigart, L., Gould, R., Krings, G., Hirst, G. L., Bedrosian, I., Layman, R. M., Carter, J. M., Klein, M., Venters, S., Sonal, S., van der Noordaa, M., Chien, A. J., Haddad, T., Isaacs, C., Pusztai, L., Albain, K., Nanda, R., Tripathy, D., ... Symmans, W. F.
Predicted sensitivity to endocrine therapy for stage II-III hormone receptor-positive and HER2-negative (HR+/HER2-) breast cancer

before chemo-endocrine therapy.

Annals of oncology : official journal of the European Society for Medical Oncology, S0923-7534(21)00128-9. Advance online publication.

[Read More](#)



[Read More](#)

March 30 was Lynch Syndrome Awareness Day. Lynch syndrome is a multi-cancer syndrome, meaning it increases the risk for getting several types of cancer. Smilow Cancer Hospital's Dr. Xavier Llor explains what is known and what is still yet to be discovered about the syndrome.



[Read More](#)

In recent years, the liver cancer landscape has been rapidly changing in the United States. Learn how skyrocketing hepatitis C cases and the emergence of a worrying new at-risk group for hepatitis C are presenting Yale Cancer Center and Smilow Cancer Hospital researchers and clinicians with new challenges and opportunities in their approach to patient outreach and treatment for liver cancer.



Gorfinkel, L., Demsky, C., Pashankar, F., Kupfer, G., & Shah, N. C.
Bone marrow transplant using fludarabine-based reduced intensity conditioning regimen with in vivo T cell depletion in patients with Fanconi anemia.

Pediatric transplantation, e14009. Advance online publication.

[Read More](#)

Chow, R., Herrstedt, J., Apro, M., Chiu, L., Lam, H., Prsic, E., Lock, M., DeAngelis, C., & Navari, R. M.

Olanzapine for the prophylaxis and rescue of chemotherapy-induced nausea and vomiting: a systematic review, meta-analysis, cumulative meta-analysis and fragility assessment of the literature.

Supportive care in cancer : official journal of the Multinational Association of Supportive Care in Cancer, 1–21. Advance online publication.

[Read More](#)

Davidoff, A. J., Canavan, M. E., Prsic, E., Saphire, M., Wang, S. Y., & Presley, C. J.

End-of-life patterns of symptom management and cancer-directed care among Medicare beneficiaries with lung cancer: a claims-based analysis.

Supportive care in cancer : official journal of the Multinational Association of Supportive Care in Cancer, 10.1007/s00520-020-05964-2. Advance online publication.

[Read More](#)

Perincheri S, Levi AW, Celli R, Gershkovich P, Rimm D, Morrow JS, Rothrock B, Raciti P, Klimstra D, Sinard J.

An Independent Assessment of an Artificial Intelligence System for Prostate Cancer Detection Shows Strong Diagnostic Accuracy.

Modern Pathology, Online ahead of print.

[Read More](#)

Lin YE, Shnitzer T, Talmon R, Villarroel-Espindola F, Desai S, Schalper K, Kluger Y.

Graph of Graphs Analysis for Multiplexed Data with Application to Imaging Mass Cytometry.

PLoS Computational Biology, Online ahead of print.

[Read More](#)

Gao Y, Chen S, Halene S, Tebaldi T.

Transcriptome-wide Quantification of Double-Stranded RNAs in Live Mouse Tissues by dsRIP-Seq.

Star Protocols.

[Read More](#)

Cartmel B, Hughes M, Ercolano EA, Gottlieb L, Li F, Zhou Y, Harrigan M, Ligibel JA, von Gruenigen VE, Gogoi R, Schwartz PE, Risch HA, Lu L, Irwin ML.

Randomized Trial of Exercise on Depressive Symptomatology and Brain Derived Neurotrophic Factor (BDNF) in Ovarian Cancer Survivors: The Women's Activity and Lifestyle Study in



[Read More](#)

Follow Yale Cancer Center on Twitter

Follow us on [twitter](#)



Interested in studying #geneticcounseling or becoming a #geneticcounselor? Register to learn from our @SmilowCancer #Genetics & Prevention Program and to hear from experts and current students on Friday, May 21st from 12:30-4:00pm.



Join us tonight at 6pm for a virtual CME Seminar presented by @SmilowCancer Hospital Care Center in Waterford. Dr. Elena Ratner, Dr. Mitchell Clark & Johanna D'Addario will share new updates in #GynecologicCancers.



Join us today at Noon for a @YaleCancer virtual Grand Rounds. Dr. Jorge Galán and Dr. Nicole Deziel @DezielLab_yale will be presenting "Bacterial Pathogens and #Cancer" and "Environ. Exposures and #ThyroidCancer in CT women."



Congratulations to Dr. Lieping Chen elected to the 2021 #AACRFellows class recognizing his significant innovation and progress against #cancer including the field of PD-L1 biology.



Promising news from our researchers in the fight against #PancreaticCancer. A new study in .@Oncotarget led by Dr. Luisa Escobar-Hoyos @Escobar_Lab shows alternative RNA splicing can help detect disease and target treatment.



We are conducting a study to improve care for children with advanced cancer. If you have lost a child to cancer, we would appreciate the opportunity to learn from your experiences.



Join us at Noon today for a virtual @YaleCancer Grand Rounds. Dr. Michael Hurwitz and Dr. Iris Isufi will be presenting "The Cell Therapy DART Solid Tumor Program" and "Cellular Therapies for Hematologic Malignancies at Yale "

Survivors: The Women's Activity and Lifestyle Study in Connecticut (WALC).

Gynecologic Oncology, Online ahead of print.

[Read More](#)

Slovak RJ, Park HJ, Kamp WM, Ludwig JM, Kang I, Kim HS.

Co-inhibitor Expression on Tumor Infiltrating and Splenic Lymphocytes after Dual Checkpoint Inhibition in a Microsatellite Stable Model of Colorectal Cancer.

Scientific Reports.

[Read More](#)

Gettel CJ, Canavan ME, Greenwood-Ericksen MB, Parwani VL, Ulrich AS, Pilgrim RL, Venkatesh AK.

A Cross-sectional Analysis of High-Acuity Professional Services Performed by Urban and Rural Emergency Care Physicians Across the United States.

Annals of Emergency Medicine, Online ahead of print.

[Read More](#)

Klein MI, Cannataro VL, Townsend JP, Newman S, Stern DF, Zhao H.

Identifying Modules of Cooperating Cancer Drivers.

Molecular Systems Biology.

[Read More](#)

Bewersdorf JP, Parmar N, Israel GM, Gettinger SN, Lee AI.

Clinical Characteristics and Outcomes of Splenic Infarction in Cancer Patients: A Retrospective, Single Center Report of 206 Cases.

Journal of Thrombosis and Thrombolysis, Online ahead of print.

[Read More](#)

Gorfinkel L, Demsky C, Pashankar F, Kupfer G, Shah NC.

Bone Marrow Transplant Using Fludarabine-Based Reduced Intensity Conditioning Regimen with In Vivo T Cell Depletion in Patients with Fanconi Anemia.

Pediatric Transplantation, Online ahead of print.

[Read More](#)

El Chaer F, Borate U, Duléry R, Holtan SG, Law AD, Muffly L, Nasserredine S, Shallis RM, Stringaris K, Taylor J, Devine SM, Mohty M, Hourigan CS.

Azacitidine Maintenance after Allogeneic Hematopoietic Cell Transplantation for MDS and AML.

Blood Advances.

[Read More](#)

Zhang X, Chan T, Mak M.

Morphodynamic Signatures Of MDA-MB-231 Single Cells and Cell Doublets Undergoing Invasion in Confined Microenvironments.

Scientific Reports.

[Read More](#)

Petrylak DP, Vaishampayan UN, Patel KR, Higano CS, Albany C, Dawson NA, Mehlhaff BA, Quinn DI, Nordquist LT, Wagner VJ, Siegel

J, Trandafir I, Sartor O



In new research led by @MehraGolshan presented at #SSO2021 shows breast pCR, nodal status can predict nodal pCR for patients with HER2-positive & triple-negative #breastcancer treated with chemotherapy.



We're proud to announce the appointment of Dr. Cecelia Calhoun as Director of our Adolescent-Young Adult #SickleCell Program @YaleCancer & @SmilowCancer.



Today is #LynchSyndromeAwarenessDay. Lynch syndrome is a multi-cancer syndrome, increasing the risk for getting several types of cancer. Dr. Xavier Llor @SmilowCancer explains more



Congratulations to @AnneChiangmd named the new executive officer @SWOG #Cancer Research Network to oversee the portfolio of clinical trials in #lungcancer and #breastcancer.



Skyrocketing #HepatitisC cases and the emergence of a new at-risk group for hepatitis C are presenting @YaleCancer @SmilowCancer researchers with new challenges in their approach to patient care for #livercancer.



Thank you to @YaleSurgery for the touching tribute to Dr. Clarence Sasaki. Dr. Sasaki was a master surgeon, empowering leader & mentor, and tireless scientist. He made an immeasurable impact for patients with #headandneckcancers

Calendar

Yale Cancer Answers

April 4; 7:30 PM

NPR

Prostate Cancer and Genomic Testing

Michael S. Leapman, MD

[Learn More](#)

Radiobiology and Radiotherapy Research Program

April 5; 11:00 AM

Functionality of BRCA2 Reversion Mutations Isolated from Relapsed PARPi Treated Ovarian Cancer Patients

Gemma Moore, PhD

[Learn More](#)

, Mandalari L, Santor C.

A Randomized Phase IIa Study of Quantified Bone Scan Response in Patients with Metastatic Castration-Resistant Prostate Cancer (mCRPC) Treated With Radium-223 Dichloride alone or in Combination with Abiraterone Acetate/Prednisone or Enzalutamide.

ESMO Open, Online ahead of print.

[Read More](#)

Krishnamurthy N, Goodman AM, Barkauskas DA, Kurzrock R.

STK11 Alterations in the Pan-cancer Setting: Prognostic and Therapeutic Implications.

European Journal of Cancer, Online ahead of print.

[Read More](#)

Gormley M, Knobf T, Vorderstrasse A, Aouizerat B, Hammer M, Fletcher J, D'Eramo Melkus G.

Exploring the Effects of Genomic Testing on Fear of Cancer Recurrence among Breast Cancer Survivors.

Psycho-Oncology, Online ahead of print.

[Read More](#)

Kim J, Cardin D, Vaishampayan U, Kato S, Grossman S, Glazer P, Shyr Y, Ivy S, LoRusso P.

Clinical Activity and Safety of Cediranib and Olaparib Combination in Patients with Metastatic Pancreatic Ductal Adenocarcinoma without BRCA Mutation.

The Oncologist, Online ahead of print.

[Read More](#)

Dong YL, Vadla GP, Lu JJ, Ahmad V, Klein TJ, Liu LF, Glazer PM, Xu T, Chabu CY.

Cooperation between Oncogenic Ras and Wild-Type p53 Stimulates STAT Non-cell Autonomously to Promote Tumor Radioresistance

Communications Biology.

[Read More](#)

Sullivan ZA, Khoury-Hanold W, Lim J, Smillie C, Biton M, Reis BS, Zwick RK, Pope SD, Israni-Winger K, Parsa R, Philip NH, Rashed S, Palm N, Wang A, Mucida D, Regev A, Medzhitov R.

$\gamma\delta$ T Cells Regulate the Intestinal Response to Nutrient Sensing.

Science.

[Read More](#)

Funding and Award Opportunities

NIH RFI: Inviting Comments and Suggestions to Advance and Strengthen Racial Equity, Diversity, and Inclusion in Biomedical Research and Advance Health Disparities and Health Equity Research

This RFI invites feedback on the approaches the NIH can take to advance racial equity, diversity, and inclusion within all facets of the

[Learn More](#)

The Genome as Playground: Jumping Genes and the Evolution of the Immune System

April 5; 3:00 PM

David Schatz, PhD

[Learn More](#)

Yale Cancer Center Grand Rounds

April 6; 12:00 PM

The p53 Tumor Suppressor Pathway

Guillermina (Gigi) Lozano, PhD

[Learn More](#)

Human and Translational Immunology Seminar Series

April 6; 4:00 PM

Novel Therapeutic Approaches in Sarcoidosis and Other Inflammatory Disorders with Macrophage Activation

William Damsky, MD, PhD

[Learn More](#)

Yale Cancer Center Seminar

April 7; 3:30 PM

Is Tapping into the Immune System Still a Viable Option for Breast Cancer Treatment?

Kim Blenman, PhD, MS

[Learn More](#)

Yale General Internal Medicine Clinical Conference Meeting

April 8; 7:30 AM

Breast Cancer Survivorship

Tara Sanft, MD

[Learn More](#)

Pathology Grand Rounds

April 8; 12:30 PM

Pediatric Hepatocellular Neoplasms: New Biomarkers and Biology Annotated Classification

Dolores Lopez-Terrada, MD

[Learn More](#)

Cancer Genetics and Prevention Seminar

April 8; 2:30 PM

[Learn More](#)

Center for GI Cancers Weekly Seminar – Journal Club

April 8; 4:15 PM

Jaykumar Thumar, MBBS, MD

[Learn More](#)

Yale Cancer Answers

April 11; 7:30 PM

advance racial equity, diversity, and inclusion within all facets of the biomedical research workforce and expand research to eliminate or lessen health disparities and inequities.

Responses Due: April 9, 2021

[Read More](#)

NCCN Request for Proposals (RFP): Phase I/II Clinical and/or Correlative Studies of the panHER Inhibitor Neratinib in the Treatment of Breast, Gastrointestinal, Lung, and Neurological Cancers

This RFP is to support NCCN Member Institution faculty for the performance of clinical and correlative studies to further evaluate the effectiveness of neratinib in the treatment of breast, gastrointestinal (GI), lung and neurological cancers.

Application Deadline: April 19, 2021

[Read More](#)

Cancer Grand Challenges Program

The NCI and Cancer Research UK (CRUK) are partnering to fund the Cancer Grand Challenges program. Cancer Grand Challenges will fund novel ideas by multidisciplinary research teams from around the world that offer the potential to advance bold cancer research and improve outcomes for people affected by cancer. These nine challenges are aimed at solving complex problems in cancer research, which, if solved, could have a transformative impact towards progress.

Application Deadline: April 22, 2021

[Read More](#)

Yale SPORE in Lung Cancer

- **Career Enhancement Award:** The goal of the CEP of the YSILC is to educate the next generation of investigators committed to translational research in lung cancer. The CEP will provide support of up to \$50,000 to promising junior investigators and/or established investigators who have not previously conducted lung cancer focused research.
- **Developmental Research Program:** To provide seed money to investigators to support studies with a strong translational component that have the potential to evolve into, or be incorporated into, a full YSILC project.

Letters of Intent Due: April 23, 2021

[Read More](#)

Alex's Lemonade Stand - Crazy 8 Initiative

This initiative aims to tackle specific challenges in pediatric cancer research that require substantial support for collaborative teams. The Crazy 8 Initiative will fund research into innovative and rigorous approaches that directly address the most intractable issues in pediatric cancer research today.

Letter of Intent Due: April 26, 2021

[Read More](#)

NCCN/AstraZeneca Initiative Request for Proposals (RFP) in Patients with Early-Stage Non-Small Cell Lung Cancer (NSCLC)

The intent of this RFP is to encourage NCCN Member Institutions to submit LOIs describing concepts and ideas for developing, implementing, and evaluating healthcare provider performance and/or healthcare quality improvement initiatives to improve patient care and outcomes in early stage NSCLC.

April 11; 7:30 PM

NPR

Basic Cancer Biology

Markus Müschen, MD, PhD

[Learn More](#)

YSPH/CDE526 Seminar in Chronic Disease Epidemiology

April 13; 12:00 PM

Emerging Medical Technology in Cancer Care

Michaela Dinan, PhD

[Learn More](#)

Virtual Schwartz Rounds

April 13; 12:00 PM

Past Memories And Future Hopes: A Group Reflection on COVID-19 a Year Later

Leslie Blatt, APRN

[Learn More](#)

Yale New Haven Health - Working Parents & Guardians Group

April 14; 12:00 PM

[Learn More](#)

Center for Methods in Implementation and Prevention Science (CMIPS) Seminar Series

April 14; 12:00 PM

Yin Cao, ScD, MPH

[Learn More](#)

Virtual Yale Healthcare Conference 2021

April 15; 9:00 AM

Behind the Mask: Health Equity Lessons from COVID-19

[Learn More](#)

Pathology Grand Rounds

April 15; 12:30 PM

[Learn More](#)

Cancer Genetics and Prevention Seminar

April 15; 2:30 PM

[Learn More](#)

Center for GI Cancers Weekly Seminar

April 15; 4:15 PM

GI Biorepository Update

John Kunstman, MD

[Learn More](#)

Digestive Health Virtual CME Series 2021

April 15; 5:00 PM

IBS

Jill Deutsch, MD

[Learn More](#)

outcomes in early-stage NSCLC.

Letter of Intent Deadline: May 3, 2021

Read More

Pfizer Global Medical Grants - NSCLC Therapy Management for Optimal Outcomes

Projects that will be considered for Pfizer support will focus on development of an algorithm or tool to guide the optimal treatment and support of patients with ALK or ROS1 re-arranged NSCLC.

Application Deadline: May 5, 2021

Read More

Breast Cancer Alliance Young Investigator Grant

To encourage a commitment to breast cancer research, the BCA invites clinical doctors and research scientists whose primary focus is breast cancer and who are in the early stages of their careers to apply for funding for the Young Investigator Grant.

Internal LOI Deadline: June 1, 2021

Read More

The Cure Starts Now Foundation Research Grants

Research questions considered - Disease Impact: Does the study propose an intervention or clinical tool that will reduce the morbidity or mortality from or potentially find a cure for pediatric brain cancer? Innovation: Does the research study propose a novel approach or represent advancement in current treatment of pediatric brain cancer?

Application Deadline: June 1, 2021

Read More

Cancer Prevention, Detection, Diagnosis, and Treatment Technologies for Global Health (U01)

This FOA supports the development of cancer-relevant technologies suitable for use in low- and middle-income countries.

Application Deadline: June 2, 2021

Read More

Bristol Myers Squibb Foundation Diversity in Clinical Trials Career Development Program

The BMSF DCTCDP is a 2-year program designed to support the career development of early-stage investigator (as defined by NIH) physicians underrepresented in medicine, or physicians who have a demonstrated commitment to increasing diversity in clinical research, to become independent clinical trial investigators who are engaged in advancing health equity through their research and mentoring.

Application Deadline: July 2, 2021

Read More

Short Courses on Innovative Methodologies and Approaches in the Behavioral and Social Sciences (R25)

The NIH Research Education Program (R25) supports research education activities in the mission areas of the NIH. The overarching goal of this R25 program is to support educational activities that complement and/or enhance the training of a workforce to meet the nation's biomedical, behavioral and clinical research needs.

Application Deadline: June 4, 2021

Read More

[Learn More](#)

Submissions

Please submit your recent publications, awards, and grant announcements to:

Renee Gaudette

Director, Public Affairs and Communications

[Read More](#)

The NCI Transition Career Development Award

- **K22 - Independent Clinical Trial Required-** This FOA represents the continuation of an NCI program to facilitate the transition of investigators in mentored, non-independent cancer research positions to independent faculty cancer research positions. **Application Deadline:** June 12, 2021 **Read More**
- **K22 - Independent Clinical Trial Not Allowed-** This FOA is designed specifically for candidates proposing research that does not involve leading an independent clinical trial, a clinical trial feasibility study, or an ancillary study to a clinical trial. **Application Deadline:** June 12, 2021 **Read More**
- **K22 Independent Basic Experimental Studies with Humans Required-** This FOA is designed specifically for basic science experimental studies involving humans. **Application Deadline:** June 12, 2021 **Read More**

Exploratory Grant Award to Promote Workforce Diversity in Basic Cancer Research (R21 Clinical Trial Not Allowed)

This FOA is a continuation of an NCI program to enhance the diversity of the pool of the cancer research workforce by recruiting and supporting eligible New Investigators and Early Stage Investigators from diverse backgrounds, including from groups that have been shown to be nationally underrepresented in the biomedical, behavioral, clinical and social sciences.

Application Deadline: June 15, 2021

Read More

2021 ALSF 'A' Award Grant

The 'A' Award is a four-year grant designed for independent, early career scientists who demonstrate a commitment to pediatric cancer research and have institutional support for their career development.

Application Deadline: June 18, 2021

Read More

Tobacco Regulatory Science (R01)

The purpose of this FOA is to invite R01 applications to support biomedical and behavioral research that will provide scientific data to inform regulation of tobacco products to protect public health.

Application Deadline: July 14, 2021

Read More