

January 2023



*This special “year in review” newsletter includes snapshots of the work of the Yale Child Study Center in 2022. Happy New Year and many thanks to our community members, funders, partners, and other supporters who make this work possible!*

## In this edition...

- [Message from the Chair](#)
- [Our Mission](#)
- [Our Community](#)
- [Our Strategic Areas of Focus](#)
- [Our Commitment to DEIB](#)
- [Looking Back: Key Accomplishments in 2022](#)
  - [By the Numbers](#)
  - [Community Spotlights](#)
  - [News & Media](#)
  - [Events](#)
- [Looking Ahead: Goals for 2023 and Beyond](#)
- [Giving to the YCSC](#)

# Message from the Chair



*As we enter a new calendar year and prepare for the winter/spring semester, it is fitting to reflect on the last 12 months. This new “year in review” newsletter does just that, with some highlights and snapshots of the work of the YCSC community to improve the lives of children and families in 2022. Our faculty, staff, trainees, and multitude of supporters accomplished a great deal across all missions of the center. I’m grateful to all who have contributed – and indeed continue to do so as we face the on-going surge in behavioral health needs in our country, and in our world. In the spirit of our identified theme for this academic year – Generativity, Imagination, and Grace – I look forward to another year of joining and working together with a shared focus on those who come after us to serve children and families, and to inform this work. I wish you all a healthy and happy new year.*

Linda Mayes, MD

*Arnold Gesell Professor of Child Psychiatry, Pediatrics, and Psychology;*

*Chair, Yale Child Study Center*

---

[return to menu](#)

---

## Our Mission

*The mission of the Yale Child Study Center is to improve the mental health of children and families, advance understanding of their psychological and developmental needs, and treat and prevent childhood mental illness through the integration of research, clinical practice, and professional training.*



[Learn More](#)

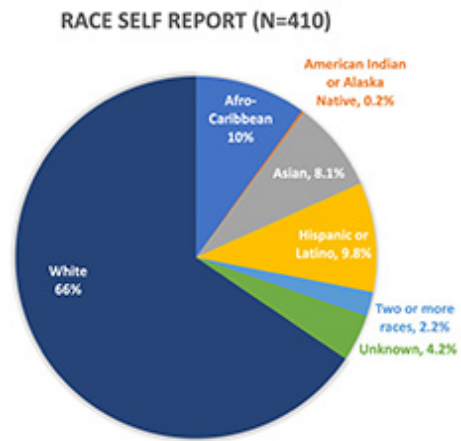
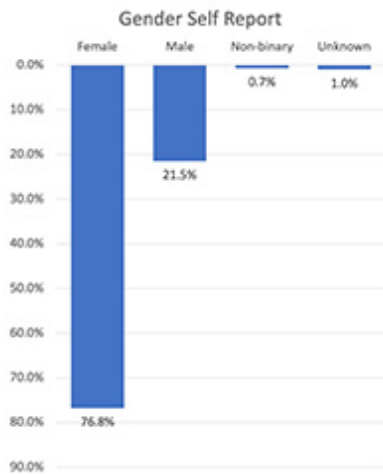
## Our Community

The YCSC community consists of faculty, staff, and trainees with a wide array of backgrounds and experiences that can't be fully represented by demographic statistics – and the basic numbers that follow portray a small picture of who we are, and portion of how we identify. Regardless, there is much room for greater diversity within our community, and our commitment to diversity, equity, inclusion, and belonging (DEIB) is a high priority across the center.

Based on Workday data in December 2022, our community consists of approximately **534 people in the following roles.**

- 192** faculty with primary YCSC appointments
- 148** voluntary and emeritus faculty
- 91** clerical, technical, and managerial staff
- 52** postgraduate associates
- 51** fellows (postdoc and clinical)

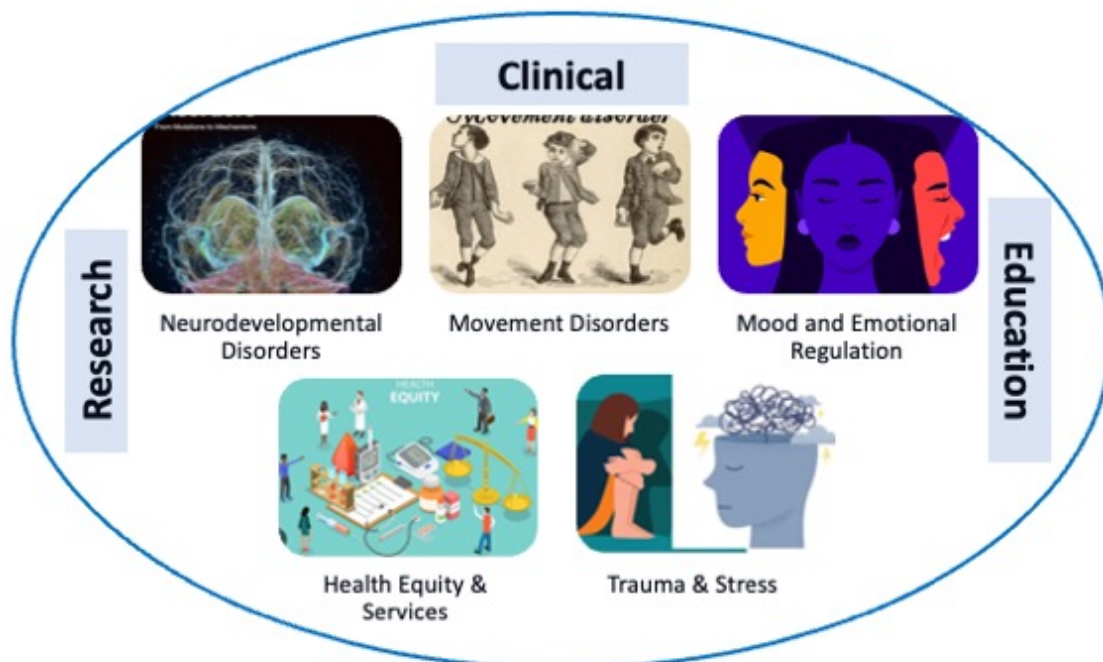
As the graphics below show, of 410 community members for whom collated data (as of August 2022) are available, more than three quarters identify as female and nearly a quarter male, with less than 1% self-reporting as non-binary. Well more than half of the community (65.6%) self-identified as white, and 10% as Afro-Caribbean, 9.8% Hispanic or Latino, 8.1% Asian, 2.2% two or more races, and 0.2% American Indian or Alaska Native.



[return to menu](#)

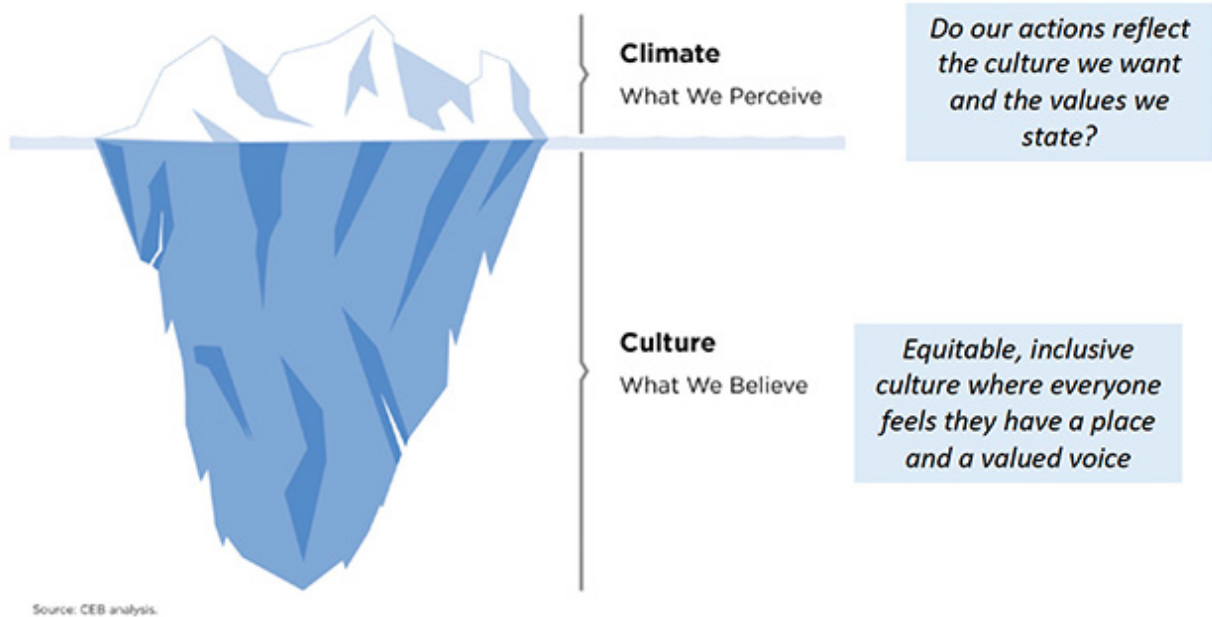
# Our Strategic Areas of Focus

The YCSC has been serving children and families from birth through adolescence since 1911. At the core of the center’s work is the mission to improve the lives of children and families through research, service, and education.



# Our Commitment to Diversity, Equity, Inclusion, and Belonging

As shown in the image below, an organization's **climate** is often the tip of the iceberg, with *what community members perceive*, and **culture** can be below the surface, focused on *what community members believe*. A key goal of our diversity, equity, inclusion, and belonging (DEIB) work at the YCSC is to ensure an *equitable, inclusive culture where everyone feels they have a place and a valued voice*. A key question in this work is: *Do our actions reflect the culture we want and the values we state?* Learn more about our center's efforts toward this in the articles linked below.



Marking Two Years of Centering Diversity, Equity, and Inclusion

Schools of Medicine and Nursing aim to boost diversity



Learn More



Learn More

[return to menu](#)

# Looking Back: Key Accomplishments & News in 2022

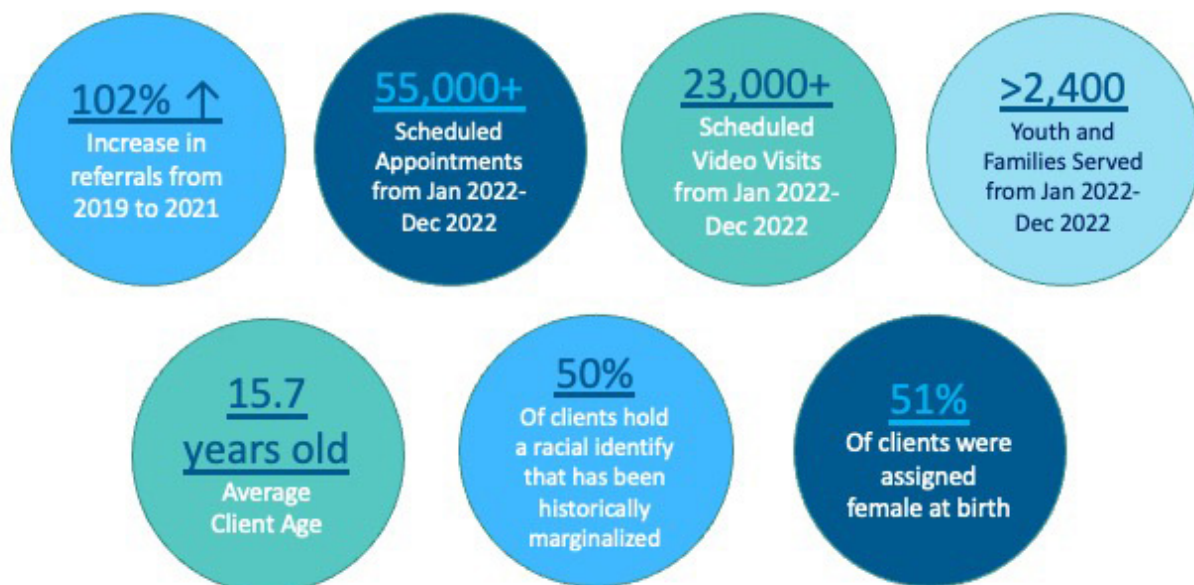
## Learning to Work Together Again In Person



## By the Numbers

As we have learned both to return to campus for in person work while also balancing a hybrid work environment, our community members have been working hard across all of our missions, as these numbers show:

- 54,729 scheduled visits in the clinical practice
- 23,270 scheduled video visits (42.5%)
- 2,422 youth and families served in the clinical practice
- 308 publications by authors with primary YCSC appointments
- 136 external news articles and media mentions
- 123 internal stories posted to the YCSC website
- 39 research trials registered in OnCore and actively recruiting participants
- 28 grants received by 24 faculty members
- 16 faculty and staff promotions



\*Data from calendar year 2022 (Jan 2022 – Dec 2022)

[return to menu](#)

## Community Spotlights



YCSC Medical-Legal  
Partnership First of Its  
Kind

[Learn More](#)

Local Collaboration Helps  
Meet Children's Basic  
Needs

[Learn More](#)

YCEI Awarded the 2022  
Horizons National Hero  
Award

[Learn More](#)



Yale Center for Emotional Intelligence (YCEI) Program Manager Tangular Irby, MAT has been part of the YCSC community since the fall of 2020. What many may not know is that Tangular, the granddaughter of [Gee's Bend quilters](#) Pearlie Kennedy Pettway and Jensie Lee Irby, has also published four children's books and two journals for educators.

[Read More](#)

In addition to honoring women's history in March with [weekly profiles](#) on four remarkable women who paved the way for others at Yale, Social Work Month was also highlighted, to honor and acknowledge the important work being done by so many in this field at the YCSC. Four social workers shared stories about why they became social workers and what advice they would offer to those new to the field.

[Read More](#)



Amy Myers, LCSW

Carrie Epstein, LCSW-R



Kimberly Gereda, LCSW

Krystal Finch, DSW, LCSW





Amanda Calhoun, MD, MPH Peter Castagna, PhD



Andrew Sheldon, MD, PhD Tara Thompson-Felix, MD

2022 Trainee Pilot Research Award  
Recipients Announced in March

[Learn More](#)



Sixteen New Fellows Joined the YCSC in  
July

[Learn More](#)



Thirteen Clinical Interns & Practicum  
Students Welcomed in September

[Learn More](#)



Yale Creates Center Devoted to Brain  
and Mind Health

[Learn More](#)



Cardona named first Latina Associate Professor at Yale Child Study Center

[Learn More](#)



Aneni selected to be part of National Institutes of Health leadership program

[Learn More](#)

---

[return to menu](#)

---

## Research Spotlight: Clinical Studies

Interested in participating in research? Many YCSC studies also provide assessments or treatments that benefit children and families. YCSC studies are advertised via the center's social media, and a sampling of some of the labs and studies seeking participants are listed below. [Visit our website](#) to learn more or [search for a study](#) of interest.

- [Active autism studies](#)
- [Anxiety and Mood Disorders Program](#)
- [Cho Lab](#)
- [Jou Lab's SPARK study](#)
- [McPartland Lab](#)
- [Sukhodolsky Lab BTIA Study](#)
- [YAY Lab](#)
- [YCEI research open enrollment](#)

---

[return to menu](#)

---

## News & Media



Got an Angry Child?  
Should You Be Worried?

[Read More](#)



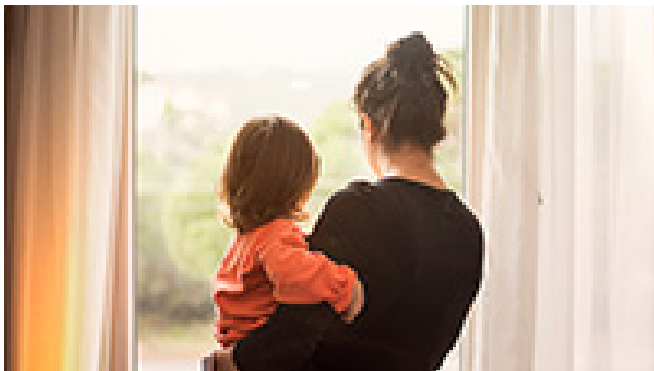
For kids, fear of the dark is  
common. Here are ways to  
help them.

[Read More](#)



Research Featured in  
Autism Advocate  
Parenting Magazine

[Read More](#)



6 Tips To Deal With The Mental Load Of  
Motherhood

[Learn More](#)



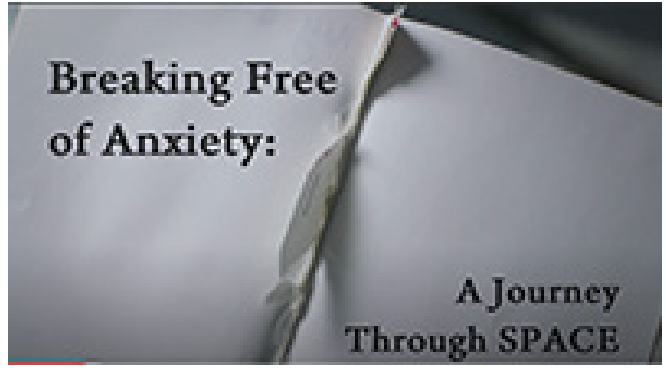
How To Talk To Kids About School  
Shootings

[Learn More](#)



Video on Puppets & Autism: Yale Research Shows Potential for Connection

[Learn More & Watch](#)



Documentary Highlights Pioneering Anxiety Treatment at Yale Child Study Center

[Learn More & Watch](#)



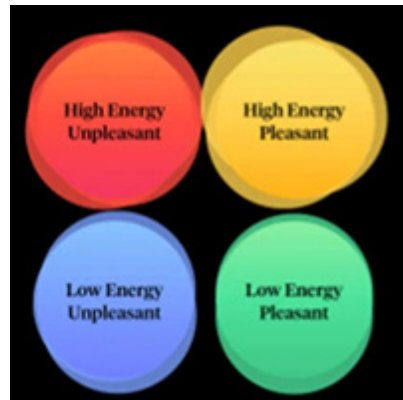
How to help kids develop the confidence to try new things

[Learn More](#)



Rethinking Treatment for Child Anxiety and OCD

[Learn More](#)



On Leadership: Conscious  
Accountability and Parenting

[Learn More](#)

The How We Feel App: Helping  
Emotions Work for Us, Not Against Us

[Learn More](#)



Why Eye Contact is Different in Autism

[Learn More](#)



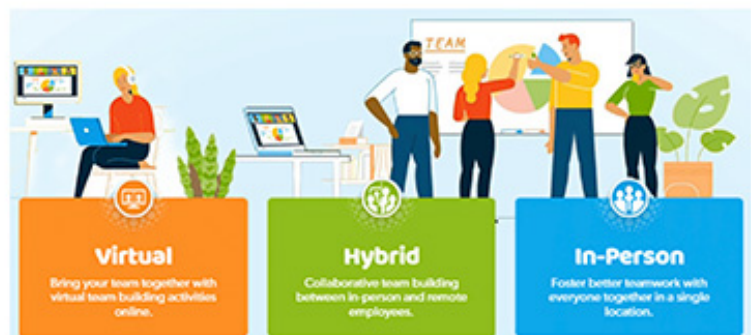
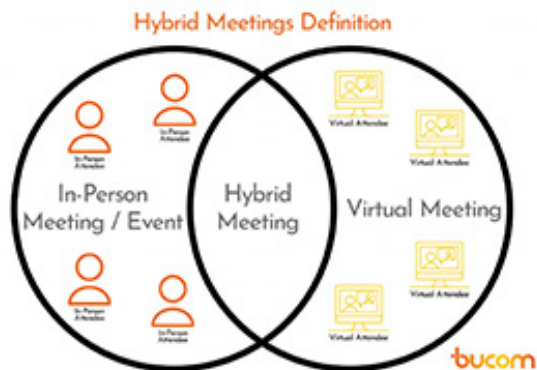
Having a Sibling with Autism Made Me  
A Better Doctor

[Learn More](#)

[More News](#)

[return to menu](#)

## Department Events





A special Grand Rounds session in February was dedicated to celebrating Black History Month

[Learn More](#)



The annual meeting of the YCSC Associates featured a broad array of research and clinical work

[Learn More](#)



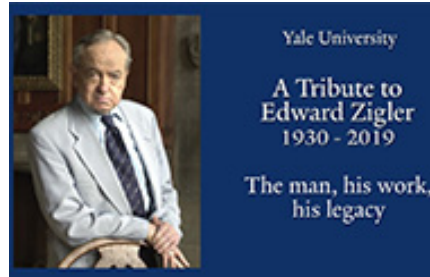
A first of its kind virtual forum was held for school mental health providers supporting teens

[Learn More](#)



A special event and portrait unveiling honored James Comer, MD, MPH in May

[Learn More](#)



A documentary honoring the life and legacy of Sterling Professor Zigler premiered in September

[Learn More](#)



The YCSC community came together in June to recognize long-term service to the University

[Learn More](#)

---



[Preview 2023 Sessions](#)

[return to menu](#)

# Looking Ahead: Goals for 2023 and Beyond



## Generativity, Imagination, & Grace Combined

A shared focus on those who come after unites us and encourages mutual support, understanding, compassion, and gratitude

Imagining a future can temper present feelings of loss and uncertainty

Building for those who come after ensures our commitments and work have lasting value

- Defining a post-COVID world
- Continuing to improve culture and enhance community engagement
- Meeting continued behavioral health surge
- Filling in research portfolio gaps
- Building a pipeline for trainees and staff to advance

- Growing and diversifying the community
- Continuing to improve and broaden communications

# Giving to the YCSC



The groundbreaking work of the YCSC would not be possible without the gifts and grants that support our research, clinical care, and educational missions. YCSC donors are essential in helping us to serve children and families in need of care. Our funding priorities for 2023 include a focus on *building the center's clinical practice* to help meet the continued behavioral health surge being faced by our clinicians on a daily basis, along with *faculty recruitment, early career faculty support, our medical-legal partnership, and child health research* efforts in collaboration with pediatrics. To learn more about supporting these or other areas of work at the center, please contact Zsuzsanna Somogyi at 203-436-8559 or at [zsuzsanna.somogyi@yale.edu](mailto:zsuzsanna.somogyi@yale.edu). **Thank you!**



**Autism  
Treatment  
Services**



**Health  
Services/Policy**



**Pediatric  
Psychology**



**Inpatient Child  
Psychiatry**



**Maternal/Family  
Mental Health**

[Donate On-line](#)





Facebook



Instagram



LinkedIn



Twitter



YouTube

**Yale**

[Child Study Center](#)

Copyright © 2023 Yale University • All rights reserved

This email was sent by: Yale School of Medicine  
135 College Street, Suite 100, New Haven, CT, 06510 USA

[Update Your Preferences](#)   [Privacy Policy](#)