

ATROCITY ALERT

Body Disposal and Mass Killing in RSF- Controlled El-Fasher

4 November 2025

Yale SCHOOL OF PUBLIC HEALTH
Humanitarian Research Lab

© 2025 Humanitarian Research Lab at Yale School of Public Health.
Satellite Imagery © Airbus DS 2025; © 2025 Vantor.

This report was independently produced by the Yale School of Public Health's Humanitarian Research Lab with the support of the Avaaz Foundation. Learn more at <https://medicine.yale.edu/lab/khoshnood/> and <https://avaaz.org>.

The Faculty Director of the Humanitarian Research Lab (HRL) at the Yale School of Public Health is Dr. Kaveh Khoshnood. The analysis and production of this report was overseen by HRL Executive Director Nathaniel Raymond and Caitlin Howarth. Analysis and report production was conducted by the Humanitarian Research Lab's Conflict Analytics team.

Citation | Raymond, Nathaniel A. and Caitlin Howarth et al. "ATROCITY ALERT Body Disposal and Mass Killing in RSF-Controlled El-Fasher," 04 November 2025. Humanitarian Research Lab at Yale School of Public Health: New Haven.

I. Key Findings

The Yale School of Public Health's Humanitarian Research Lab assesses that body disposal operations are underway in Rapid Support Forces (RSF)-controlled El-Fasher as evidence of mass killing continues. Evidence of body disposal activities include at least two earth disturbances consistent with mass graves at a mosque and the former Children's Hospital; there is one new instance of removal of objects consistent with bodies from a location north of RSF's berm. This activity appears consistent with RSF conducting clean-up of their alleged mass atrocities.

Additional indicators are present of likely ongoing mass killing at the former Children's Hospital facility (now an RSF detention site). Yale HRL also identifies multiple instances of large transport vehicles present in El-Fasher in Daraja Oula and southern El-Fasher. This transport vehicle activity may be related to movement of people (dead or alive), looting, or movement of other materials.

Yale HRL identifies a likely RSF-controlled checkpoint with a grouping of people visible on the main A-5 road between El-Fasher (via Zamzam) and Tawilah in satellite imagery collected on 1 November 2025. However, Yale HRL does not observe indicators consistent with mass displacement from El-Fasher. Sources in Tawilah, the only nearby haven for civilians not under RSF control, have reported low numbers of civilians reaching the city.¹

Yale HRL has identified at least 34 object groups consistent with bodies visible in satellite imagery since 26 October 2025, when RSF captured the city. This is widely believed to be an underestimate of the overall scale of killing.² Body disposal or removal was also observed at Al-Saudi Hospital in satellite imagery collected on 31 October 2025 (reported on 31 October 2025) and west of El-Fasher.³

Note on Burial and Mass Grave Activity

The mass grave activity that HRL identifies in this report includes the creation of trench and kettle pit graves. This activity is distinct from burial activity previously identified in El-Fasher before RSF captured the city. Yale HRL's reporting on burial and body disposal activities in and around El-Fasher prior to 26 October 2025 has concentrated on the creation of individuated burial mounds in existing cemeteries or newly created areas that are oriented toward Mecca. This burial activity has been visible in civilian areas and in military areas related to SAF, Joint Forces, and RSF. This individuated type of burial is consistent with respectful burial practices by communities that are honoring their own dead. Yale HRL does not make assessments related to whether the number of individuated burial mounds equates to a number of dead persons, and the same principle applies to mass graves, where bodies can be piled on top of each other in pit trenches and or layered on top of each other in slit trenches.

Evidence of Ongoing Mass Killings and Body Disposal in a Mass Grave at a Former Children's Hospital, El-Fasher

Yale HRL identifies activity consistent with body disposal at a mass grave outside the RSF-controlled Children's Hospital El-Fasher in satellite imagery collected on 1, 2, and 3 November 2025.

Yale HRL identifies new clusters of dark colored objects measuring 1.3-2 meters long visible inside the facility and new disturbed earth to the east of the former Children's Hospital El-Fasher facility in satellite imagery collected on 1 November 2025. Dark objects measuring approximately 1.3-2.0 meters long are visible in satellite imagery collected on 1 November 2025; these objects were not present in satellite imagery collected on 2 November or 28 October 2025. These objects are consistent in dimension and disposition with human bodies. It is possible that these objects may have been moved from another location, including from inside the RSF-controlled Children's Hospital.

Yale HRL identifies newly visible disturbed earth in satellite imagery collected on 1-3 November 2025 approximately 30 meters east of the former Children's Hospital El-Fasher Facility. Small earth disturbances are first visible in satellite imagery collected on 1 November 2025. An open trench measuring approximately 7 meters by 4 meters is then visible in satellite imagery on 2 November 2025; the trenching and holes are covered in satellite imagery collected on 3 November 2025. Two objects measuring 1.3 and 2 meters in length are visible just north of the previous trench in satellite imagery collected on 3 November 2025. This activity is consistent with mass body disposal. These activities may be related to body disposal in the mass killing at the former Children's Hospital that occurred between either 27-28 October 2025⁴ or 28 October -1 November 2025. Yale HRL first assessed that there were indicators of mass killing at this location in satellite imagery collected on 28 October 2025; a large line and grouping of objects consistent with people standing were visible in satellite imagery collected on the previous day.⁵

It is not possible based on the dimensions of a potential mass grave to indicate the number of bodies that may be interred; this is because those conducting body disposal often layer bodies on top of each other.

There is thermal scarring located across the street from the former Children's Hospital El-Fasher in satellite imagery on 1 November 2025. A group of light-toned objects was visible at this location in satellite imagery collected on 28 October 2025.

Evidence of Mass Grave at Mosque, Daraja Oula, 27-28 October 2025 (13.63283, 25.33006)

Yale HRL identifies activity consistent with body disposal in a mass grave at a mosque in Daraja Oula neighborhood. White bundles are visible on the ground near disturbed earth at a mosque in Daraja Oula between 30 October and 1 November 2025. The body disposal assessed in this instance is not consistent with individuated burial mounds.

This instance of body disposal is located approximately 200 meters north of the Saudi Hospital, where 460 “patients and their companions” were allegedly killed by the RSF,⁶ and within 250 meters east of at least one other instance of mass killing in Daraja Oula neighborhood.

Evidence of Mass Killing and Removal of Bodies North of RSF Berm, 31 October, 4 November 2025 (13.713750,25.278900)

Yale HRL corroborates evidence of a mass killing north of the RSF-created berm that walled-in the city that is removed in later imagery collected by 4 November 2025. A group of objects consistent with bodies is first visible in imagery collected on 31 October 2025. This location was first geolocated by *Bellingcat* using videos released by RSF – including footage of local RSF commander Abu Lulu – conducting alleged mass killings.⁷ The object cluster consistent with bodies cannot be individually differentiated and measured. The objects are not present in satellite imagery collected on 4 November 2025 and appear to have been removed from their prior location. It is unclear at this time whether RSF has engaged in attempted concealment at this site; further investigation is warranted.

Transport Vehicles in El-Fasher

The presence of large flatbed transport vehicles is of concern. They can be used to transport people (both alive and dead), loot, and other military equipment. Open sources have reported that at least 2000 people from El-Fasher were taken hostage and detained in Nyala, including very prominent figures such as the journalist known as Muammar Ibrahim. *Darfur24* reported on 3 November 2025 that markets in Nyala have that objects looted from El-Fasher, including roofing, cars, home furniture, and agricultural machinery and building materials such as zinc and pipes.⁸

Flatbed Vehicles in Daraja Oula: Yale HRL identifies transport vehicles measuring approximately 9.5 and 10 meters long located at a facility in Daraja Oula neighborhood. This location is approximately 340 meters from at least two areas identified as sites of alleged mass killings in reports on 31 October 2025 and located near multiple NGO, INGO, and humanitarian facilities. The Daraja Oula neighborhood, also known as the “First Class Neighborhood” is both the last known largescale refuge for civilians in El-Fasher before RSF captured the city as well as historically one of the wealthier neighborhoods in the areas. Yale HRL has identified over 19 sites consistent with door-to-door mass killings in Daraja Oula since 26 October 2025.

Flatbed Trucks near Saudi Hospital: Yale HRL identifies two transport vehicles near the Al-Saudi Hospital. The first vehicle appears in satellite imagery on 30 October 2025 and remains present through 2 November 2025. A second vehicle is newly present in satellite imagery on 2 November 2025. The transport trucks were parked along the northern fencing outside of Al-Saudi Hospital. Yale HRL first assessed that objects previously identified at Saudi Hospital, including objects consistent with the dimensions of bodies, are removed in satellite imagery on 30 October 2025, the same

day that the first transport vehicle is visible.⁹ RSF released a video at Saudi Hospital on 31 October that they were delivering medical care at Saudi Hospital.¹⁰

Flatbed Truck in Hai Al-Thawra South Neighborhood: (13.5895427 , 25.3331714) Yale HRL identifies a large transport visible in Hai Al-Thawra South Neighborhood in satellite imagery collected on 27 and 28 October 2025. The vehicle is no longer present in satellite imagery collected on 30 October 2025. The vehicle measures approximately 8 meters long. In satellite imagery from both 27 and 28 October, people are present in the area around the vehicle. Al-Thawra South neighborhood was under RSF control and not contested as of 25 October 2025 prior to RSF's control of the entire city. The ground activity is likely consistent with RSF soldiers present around the area.

RSF Checkpoint Activity on A-5 Road To Tawilah (13.58612, 25.07217)

30 October – 1 November 2025

Yale HRL identifies activity consistent with RSF-aligned checkpoint activity on the A-5 road between Tawilah and El-Fasher (Zamzam) first visible in satellite imagery collected on 1 November 2025. This location is approximately 20 kilometers east of Tawilah in an area that is known to be under RSF and its aligned forces' control. This checkpoint is located on the main road between El-Fasher and Tawilah. Tawilah, North Darfur, is the only nearby safe haven for civilians that is not under RSF control within at least 200 kilometers.

Yale HRL identifies three light technical vehicles present at a newly established checkpoint post. Two of the light technical vehicles are weapon-mounted. The object cluster consistent with people at this location may indicate detained and displaced people.

People displaced from El-Fasher arriving in Tawilah have reported that RSF and aligned forces attack, detain, and extort people along the routes to Tawilah and other locations. *Medicins Sans Frontiers* (MSF) released a statement on 31 October 2025 that “Survivors [from El-Fasher in Tawilah] report individuals being separated by gender, age or perceived ethnic identity, with many remaining held for ransom, with sums ranging from 5 million to 30 million Sudanese pounds (€7,000 to €43,000).”¹¹

Only a few thousand of the approximately 260,000 left in El-Fasher appear to have successfully arrived in havens like Tawilah.¹² Humanitarian and nongovernmental organizations based in Tawilah and other areas have reported that far fewer people have arrived in Tawilah and other locations. MSF reported on 31 October 2025 that only about 5,000 people had reached Tawilah from El-Fasher since 26 October 2025; most were suffering from malnutrition and many had gunshot wounds.¹³

Thermal Scarring in Al-Salaam

Yale HRL corroborates reports of fire damage in Al-Salaam IDP Camp in satellite imagery collected between 1 and 2 November 2025. This fire damage extends an

estimated 0.2 km². There is thermal scarring on the ground that connects multiple city blocks, indicating that large swaths of neighborhoods have been destroyed. This damage pattern is not consistent with individuated and systematic arson attacks on communities and instead may indicate unintentional fire damage. This area is not believed to have been heavily populated in a year and has been under RSF control.

II. Methodology

Yale HRL utilizes data fusion methodologies of open source and remote sensing data analysis. Yale HRL produced this report through the cross-corroboration of open source data, including social media, local news reporting, multimedia, and other reports, and remote sensing data, including satellite imagery and thermal sensor data. Researchers analyzed open source data across social media, news reports, and other publicly available sources to identify, chrono- and geolocate, and verify incidents. Analysts assess the credibility and reliability of open source data based on a source's level of detail, past credibility, and the corroboration of other independent sources. Remote sensing and satellite imagery analysis relies on multi-temporal change detection, which involves the comparison of two or more satellite images of the same area captured at different times to detect differences in coloration, visual properties, and presence, absence, or positional change of objects across the images.

Limitations

There are significant limitations to the data fusion methodology. The information environment in Sudan does not have the breadth of data available in other locations and there is likely a significant reporting bias for those who provide open source reporting. The tools and techniques present significant challenges to assess activities such as extrajudicial detention, conflict-related sexual violence (CRSV), and conflict-related casualties, particularly in environments with limited data. Satellite imagery analysis is limited by available imagery over time and space. Available nadir angles of satellite imagery can produce challenges to assess structural damage, until multiple angles and ground-level photographic and video materials emerge to help inform the analysis. Image resolution level can also limit the analyst's ability to perceive the full extent of damage present.

¹ "Urgent appeal for El Fasher's people" *Medicins Sans Frontiers* 31 October 2025. <https://www.msf.org/urgent-appeal-people-el-fasher>

² *Co-reporting including: Sudan War Monitor* "Investigation: The Killing Fields of El Fasher" *Sudan War Monitor*, 3 November 2025. <https://sudanwarmonitor.com/p/rsf-ethnic-based-killings-in-fasher>, archived at <https://perma.cc/J339-CHAJ>

Aziz Al Nour, Jack Sapoch, Julia Steers, Tessa Pang, Klaas van Dijken, Yousra Elbagir, Sam Doak, Mohamed Zakarea, Annoa Abekah-Mensah, "The Killing Fields of Al Fashir" *Lighthouse Reports, Sky News, Sudan War Monitor*
<https://www.lighthousereports.com/investigation/the-killing-fields-of-al-fashir/>, archived at <https://perma.cc/72ZW-69NL>; and

Elbagir, Yousra "Thousands targeted in 'killing fields' around Sudanese city in paramilitary group's hands" *Sky News* 4 November 2025.
<https://news.sky.com/story/tens-of-thousands-missing-in-killing-fields-around-city-in-hands-of-sudans-paramilitary-group-13463324>

³ Raymond, Nathaniel A. and Caitlin Howarth et al. "Atrocity Alert: RSF Mass Killings Persist in El-Fasher." 31 October 2025. Humanitarian Research Lab at Yale School of Public Health: New Haven. <https://files-profile.medicine.yale.edu/documents/bc5a6e36-8da3-452a-8ad9-18eac96ec064> archived at <https://perma.cc/2VT5-3T8F>

Activities consistent with body disposal:

- Removal of objects consistent with bodies at a location in Daraja Oula (13.642048,25.327989), 31 October 2025
- Removal of objects at multiple previously-reported clusters of along dirt roads near Daraja Oula Neighborhood (See Raymond, Nathaniel A., Caitlin Howarth, et al. "HUMAN SECURITY EMERGENCY El-Fasher Falls to RSF: Evidence of Mass Killing," 27 October 2025. Humanitarian Research Lab at Yale School of Public Health: New Haven. <https://files-profile.medicine.yale.edu/documents/876b4afc-e1da-495b-ac32-b5098699a371>; and Raymond, Nathaniel A., Howarth, Caitlin et al. "HUMAN SECURITY EMERGENCY Day Two of RSF Control: Mass Killings Continue in El-Fasher." 28 October 2025. Humanitarian Research Lab at Yale School of Public Health: New Haven. <https://files-profile.medicine.yale.edu/documents/b9c14991-6b22-492e-9e16-f903d25d9b49>;
- All newly-present objects at the grounds of the Saudi Hospital are no longer visible in satellite imagery collected between 28-30 October 2025 (see Raymond, Nathaniel A., Howarth, Caitlin et al. "HUMAN SECURITY EMERGENCY Day Two of RSF Control: Mass Killings Continue in El-Fasher." 28 October 2025. Humanitarian Research Lab at Yale School of Public Health: New Haven. <https://files-profile.medicine.yale.edu/documents/b9c14991-6b22-492e-9e16-f903d25d9b49>)

*Activities that **may be** consistent with body disposal include:*

- Thermal scarring of objects consistent in dimension with human bodies at 271st Air Defense Brigade, El-Fasher (26-28 October 2025)
- Structure west of Daraja Oula and former SAF Defensive Berm (13.632860, 25.309453), 28 October 2025: additional objects consistent with bodies accompanied by reddish ground discoloration may be consistent with regrouping bodies for body disposal

⁴ Raymond, Nathaniel A., Howarth, Caitlin et al. "HUMAN SECURITY EMERGENCY Day Two of RSF Control: Mass Killings Continue in El-Fasher." 28 October 2025. Humanitarian Research Lab at Yale School of Public Health: New Haven. <https://files-profile.medicine.yale.edu/documents/b9c14991-6b22-492e-9e16-f903d25d9b49> archived at <https://perma.cc/CY8H-3EHG>

⁵ Raymond, Nathaniel A., Howarth, Caitlin et al. "HUMAN SECURITY EMERGENCY Day Two of RSF Control: Mass Killings Continue in El-Fasher." 28 October 2025. Humanitarian Research Lab at Yale School of Public Health: New Haven. <https://files-profile.medicine.yale.edu/documents/b9c14991-6b22-492e-9e16-f903d25d9b49> archived at <https://perma.cc/CY8H-3EHG>

⁶ "Reported massacre at hospital in Sudan's El Fasher leaves 460 dead." *UN News*. 29 October 2025. Available at <https://news.un.org/en/story/2025/10/1166210>. archived at <https://perma.cc/JC7T-7QWC>.

Fleming, Lucy and Richard Kagoe. "Sudanese RSF militia killed 460 people at el-Fasher hospital, says WHO." *BBC*. 29 October 2025. Available at <https://www.bbc.com/news/articles/c364jgkge46o>

⁷ Bellingcat (@bellingcat) "Bellingcat has geolocated footage of a mass killing..." X, formerly known as Twitter, 31 October 2025. <https://x.com/bellingcat/status/1984287019678515289>, archived at <https://perma.cc/6FSJ-6QKV>

⁸ Darfur 24, "وصول منهوبات من الفاشر إلى أسواق نيالا بجنوب دارفور" *Darfur24*. 3 November 2025. <https://www.darfur24.com/2025/11/03/%d9%88%d8%b5%d9%88%d9%84-%d9%85%d9%86%d9%87%d9%88%d8%a8%d8%a7%d8%aa-%d9%85%d9%86-%d8%a7%d9%84%d9%81%d8%a7%d8%b4%d8%b1-%d8%a5%d9%84%d9%89-%d8%a3%d8%b3%d9%88%d8%a7%d9%82-%d9%86%d9%8a%d8%a7%d9%84%d8%a7/>, archived at <https://perma.cc/4QGW-6QWY>

⁹ Raymond, Nathaniel A. and Caitlin Howarth et al. "Atrocity Alert: RSF Mass Killings Persist in El-Fasher." 31 October 2025. Humanitarian Research Lab at Yale School of Public Health: New Haven. <https://files-profile.medicine.yale.edu/documents/bc5a6e36-8da3-452a-8ad9-18eac96ec064>

¹⁰ The Sudan Times, "RSF releases footage from wards at Saudi Hospital in El-Fasher" The Sudan Times. 31 October 2025. <https://thesudantimes.com/sudan/rsf-releases-footage-from-wards-at-saudi-hospital-in-el-fasher/>, archived at <https://perma.cc/SU2M-WBC9>;

Al Arabiya. "رداً على فيديوهات مستشفى الفاشر: قوات الدعم السريع تقول إنها تعالج جرحى الجيش السوداني." Facebook, 31 October 2025. <https://www.facebook.com/AlArabiya/videos/%D8%B1%D8%AF%D8%A7%D9%8B-%D8%B9%D9%84%D9%89-%D9%81%D9%8A%D8%AF%D9%8A%D9%88%D9%87%D8%A7%D8%AA-%D9%85%D8%B3%D8%AA%D8%B4%D9%81%D9%89-%D8%A7%D9%84%D9%81%D8%A7%D8%B4%D8%B1-%D9%82%D9%88%D8%A7%D8%AA-%D8%A7%D9%84%D8%AF%D8%B9%D9%85-%D8%A7%D9%84%D8%B3%D8%B1%D9%8A%D8%B9-%D8%AA%D9%82%D9%88%D9%84-%D8%A5%D9%86%D9%87%D8%A7-%D8%AA%D8%B9%D8%A7%D9%84%D8%AC-%D8%AC%D8%B1%D8%AD%D9%89-%D8%A7%D9%84%D8%AC%D9%8A%D8%B4-%D8%A7%D9%84%D8%B3/2053725785460303/>, archived at <https://perma.cc/5KMS-VJZF>

¹¹ "Urgent appeal for El Fasher's people" *Medicins Sans Frontiers* 31 October 2025. <https://www.msf.org/urgent-appeal-people-el-fasher>

¹² *Co-reporting including*: Sudan War Monitor “Investigation: The Killing Fields of El Fasher” *Sudan War Monitor*, 3 November 2025. <https://sudanwarmonitor.com/p/rsf-ethnic-based-killings-in-fasher>, archived at <https://perma.cc/J339-CHAJ>;

Aziz Al Nour, Jack Sapoch, Julia Steers, Tessa Pang, Klaas van Dijken, Yousra Elbagir, Sam Doak, Mohamed Zakarea, Annoa Abekah-Mensah, “The Killing Fields of Al Fashir” *Lighthouse Reports*, *Sky News*, *Sudan War Monitor* <https://www.lighthousereports.com/investigation/the-killing-fields-of-al-fashir/>, archived at <https://perma.cc/72ZW-69NL>; and

Elbagir, Yousra “Thousands targeted in ‘killing fields’ around Sudanese city in paramilitary group’s hands” *Sky News* 4 November 2025. <https://news.sky.com/story/tens-of-thousands-missing-in-killing-fields-around-city-in-hands-of-sudans-paramilitary-group-13463324>,

¹³ “Urgent appeal for El Fasher’s people” *Medicins Sans Frontiers* 31 October 2025. <https://www.msf.org/urgent-appeal-people-el-fasher>.

Former Children's Hospital, El-Fasher

NEW DISTURBED EARTH, DARK COLORED OBJECTS, THERMAL SCARRING OBSERVED BETWEEN 28 OCTOBER & 01-02 NOVEMBER 2025



28 October 2025 © Airbus DS 2025

Analysis of satellite imagery collected on 01-02 November 2025 of the former Children's Hospital in El-Fasher shows new dark colored objects measuring approximately 1.3-2 meters in length, new thermal scarring where a cluster of objects was previously identified, and disturbed earth measuring 15 x 14 meters appears that is not previously seen in prior imagery from 28 October 2025. Imagery collected on 02 November 2025 shows an open trench within the plot of disturbed earth; it appears covered in imagery collected on 03 November 2025. | 13.621739,25.383059



01 November 2025 © 2025 Vantor



26 October 2025 © 2025 Vantor



01 November 2025 © 2025 Vantor



02 November 2025 © 2025 Vantor



03 November 2025 © 2025 Vantor

Former Children's Hospital, El-Fasher 26 October-03 November 2025

New disturbed earth, light colored objects, and trenching observed

13.621765,25.383252

Imagery collected over the former Children's Hospital shows the appearance of new disturbed earth between 26 October-01 November. Imagery collected on 02 November shows additional disturbed earth, including the presence of a new trench measuring 7 x 4 meters. Imagery collected on 03 November 2025 shows the trench is no longer visible, along with two light colored objects measuring 1.3 and 2 meters in length appearing in a hole above the prior trenching.

Mosque, Daraja Oula, El-Fasher

NEW DISTURBED EARTH, WHITE BUNDLED OBJECTS OBSERVED BETWEEN 30 OCTOBER-01 & 03 NOVEMBER 2025

Analysis of imagery collected between 30 October and 01 November 2025 over of El-Fasher shows the new presence of at least 12 individual white oblong objects, measuring approximately 1.38-1.8m in length, located 5m south of a mosque in the Daraja Oula neighborhood. Adjacent to the white objects is a new earth disturbance of overturned earth, approximately 5m in length.

Imagery collected on 03 November 2025 shows the white objects are no longer present. The earth disturbance remains visible, however partially obscured by trees due to the high off-nadir angle of the imagery collection. | 13.63283, 25.33006



30 October 2025 © 2025 Vantor



01 November 2025 © 2025 Vantor



03 November 2025 © 2025 Vantor

Northern Berm, El-Fasher

BODY DISPOSAL BETWEEN 31 OCTOBER-04 NOVEMBER 2025

Analysis of satellite imagery collected on 31 October 2025 on the northern berm around El-Fasher shows the appearance of a cluster of objects confirmed to be bodies through geolocation produced by Bellingcat since imagery collected on 15 October 2025.

Satellite imagery collected on 04 November 2025 shows that this cluster of bodies has been removed.

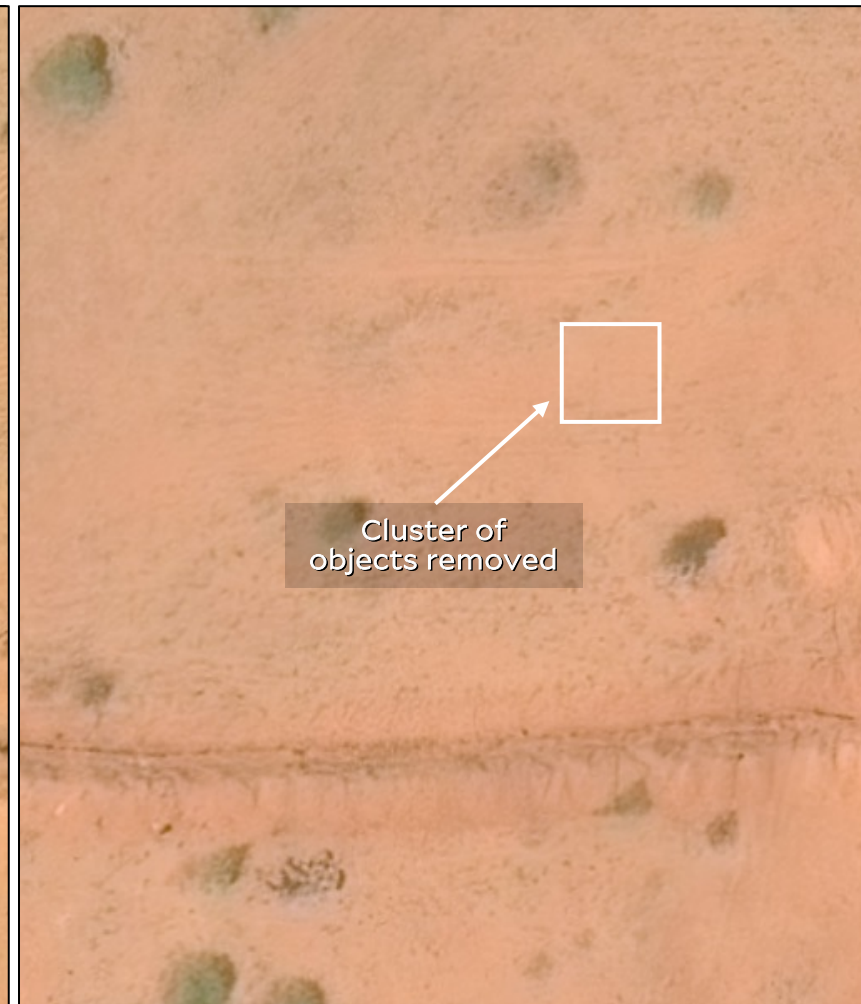
13.713750,25.278900



15 October 2025 © 2025 Vantor



31 October 2025 © 2025 Vantor
Geolocation: <https://x.com/bellingcat/status/1984287019678515289>



04 November 2025 © 2025 Vantor

Outside Saudi Hospital Facility, El-Fasher

FLATBED TRUCKS OBSERVED
30 OCTOBER TO 3 NOVEMBER 2025

In satellite imagery collected on 30 October 2025 over Daraja Oula, near Al-Saudi Hospital, one flatbed truck approximately measuring 9.5-10 meters in length appears and remains in the same place on 1 November 2025. The truck is parked near the northern fence of Al-Saudi Hospital.

In satellite imagery collected on 2 November, a second flatbed truck appears, approximately measuring 9.5-10 meters in length. | 13.631307,25.329816



28 October 2025 © Airbus DS 2025



30 October 2025 © 2025 Vantor



2 November 2025 © 2025 Vantor

Daraja Oula, El-Fasher

**TRANSPORT VEHICLES OBSERVED ON
30 OCTOBER 2025**

Two transport vehicles approximately measuring 9.5-10 meters appear in satellite imagery collected on 30 October 2025 over Daraja Oula in El-Fasher. These two vehicles were not present in this location in prior imagery.

13.634610, 25.330552



28 October 2025 © Airbus DS 2025



30 October 2025 © 2025 Vantor

Hai Al-Thawra South, El-Fasher

LARGE VEHICLE AND PEOPLE OBSERVED ON 27 AND 28 OCTOBER 2025

A large vehicle approximately 8 meters long is present in satellite imagery collected on 27 and 28 October 2025. This vehicle remains in the same location between these two images and is not present in prior imagery. In both images, objects consistent with people appear to move near the vehicle; these objects and the vehicle are not present in prior imagery nor found in imagery after 28 October 2025. | 13.5895427 , 25.3331714



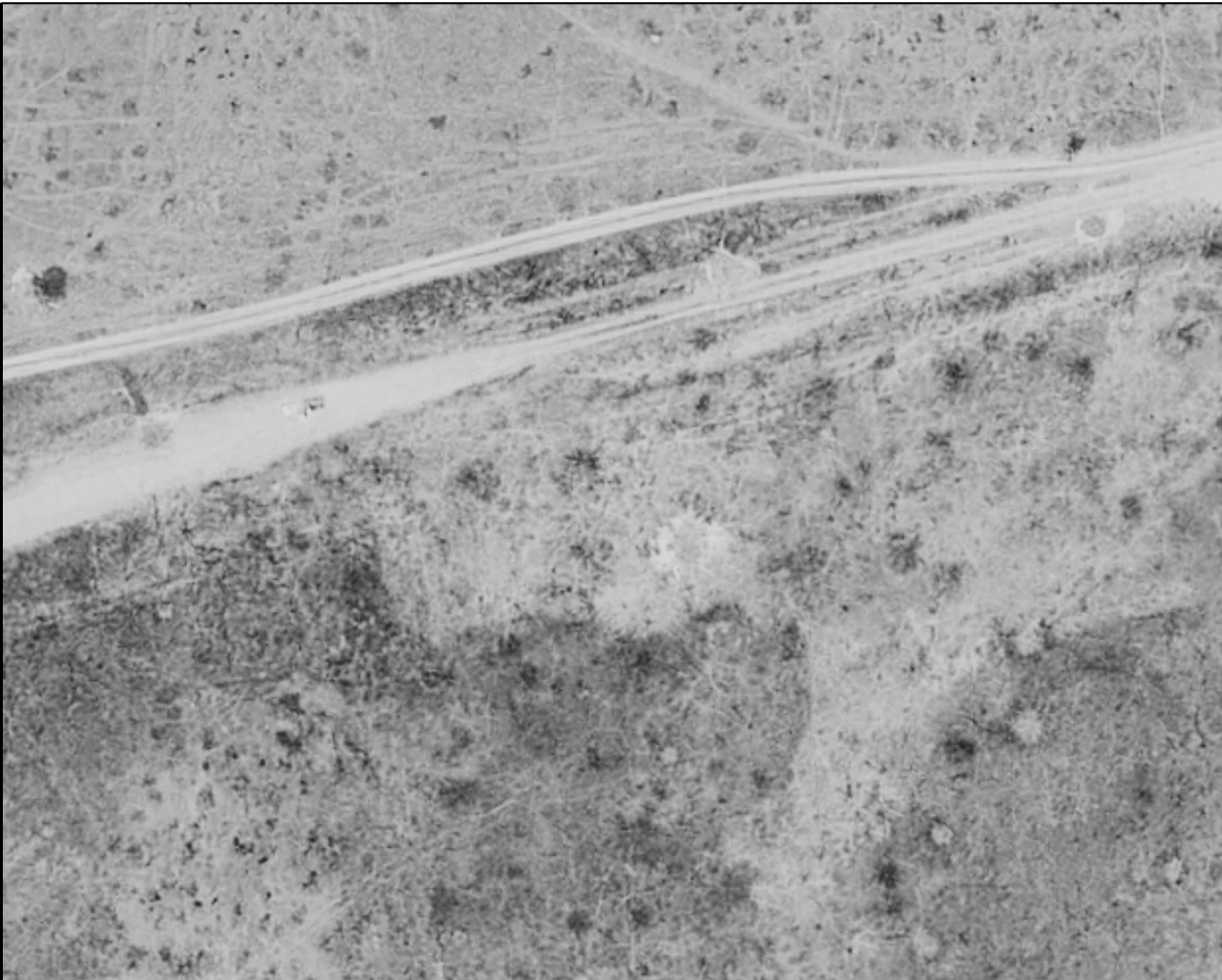
27 October 2025 © Airbus DS 2025



28 October 2025 © Airbus DS 2025

A5 Road, East of Tawilah

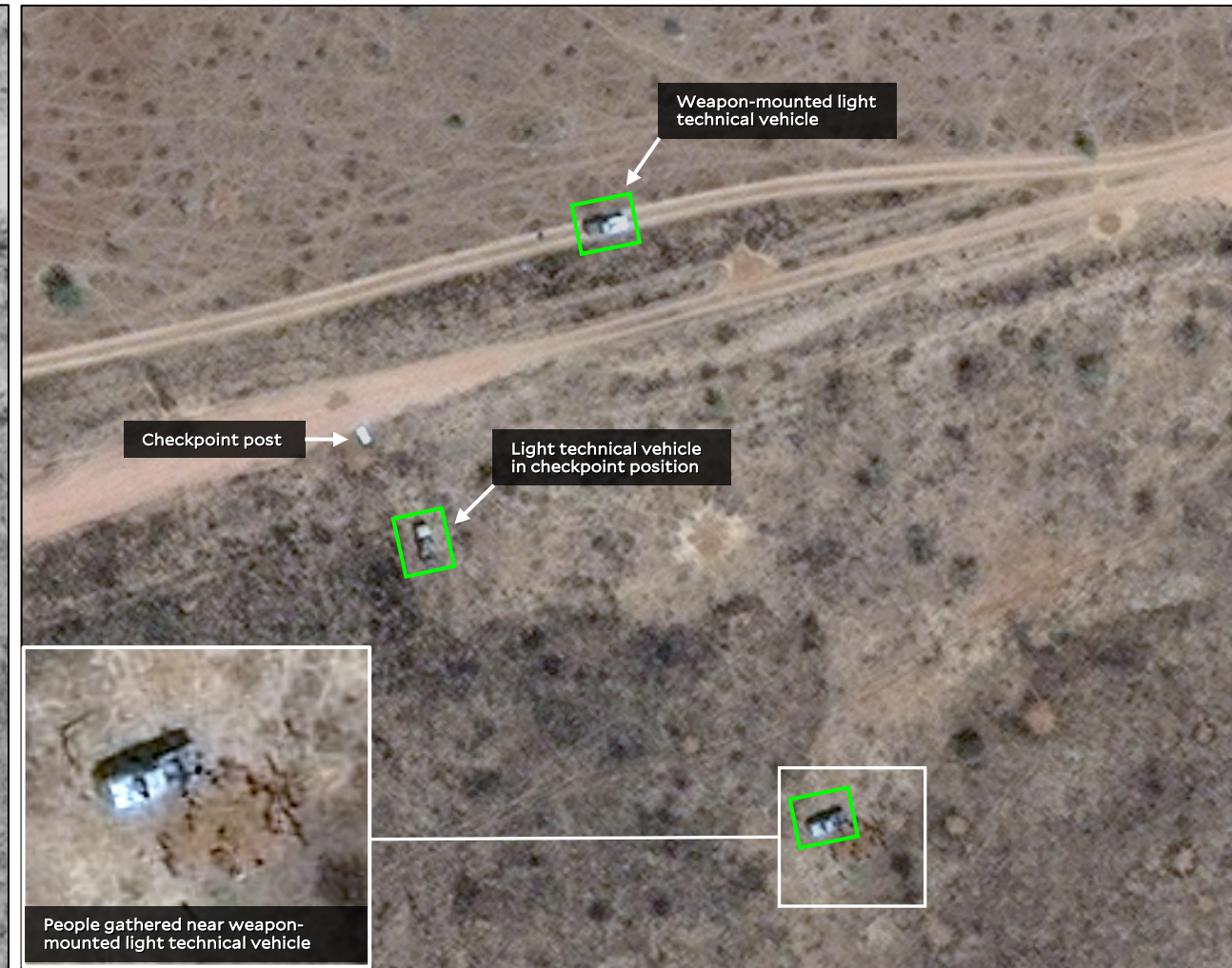
CHECKPOINT ACTIVITY OBSERVED BETWEEN 30 OCTOBER-01 NOVEMBER 2025



30 October 2025 © 2025 Vantor

Analysis of imagery collected between 30 October and 01 November 2025 shows the new presence of a checkpoint on the A5 road, located 20km east of Tawilah. Newly present is a post, likely an erected covering or tent positioned on the roadside with a light technical vehicle positioned 12 m behind it. A weapon mounted light technical vehicle with a grouping of objects consistent with people gathered nearby is observed 60m south of the checkpoint post.

Another weapon-mounted light technical vehicle is observed skirting the checkpoint on a short side-path parallel to the A5. | 13.58612, 25.07217



01 November 2025 © 2025 Vantor



Al-Salaam, El-Fasher
01 November 2025

New thermal scarring observed

13.661238,25.361372

☐ Thermal scarring

Imagery collected over Al-Salaam IDP
camp on 01 November 2025 shows the
presence of new thermal scarring in the
area.

Yale SCHOOL OF PUBLIC HEALTH

Humanitarian Research Lab

[About](#) | [Reports](#) | [Support](#)