

April 25, 2014

Announcements

Susan Higgins Appointed to NCCN Steering Committee

Abe Lopman and I are happy to report that Susan Higgins, MD has been appointed the Yale Cancer Center/Smilow Cancer Hospital representative to the National Comprehensive Cancer Network (NCCN) Steering Committee. Responsibilities of the NCCN Steering Committee include: selecting topics for new Guidelines, appointing institutional representatives to each Guidelines Panel, developing Guidelines policies for ensuring consistency, overseeing the institutional review process, ensuring full participation of members from his/her member institution, and coordinating the implementation of Guidelines within their institution.

We are confident that Sue will do an outstanding job in this role and look forward to her leadership at NCCN on behalf of YCC/SCH.

Press Ganey Scores Continue to Climb!

I am pleased to report that after considerable efforts toward improving our patients' experience in our outpatient clinics in Smilow, we are seeing continued improvement in our Patient Satisfaction results. In particular, Smilow 4 clinics (a large group of multidisciplinary disease teams) has shown great improvement over time. In this area, a concerted effort has been made to improve patient wait times, scheduling conflicts, and the overall experience for our patients, and as a result, the most recent Press Ganey scores showed a steady gain to 90.7.

Our overall Press Ganey score for all of our outpatient clinics was just reported for the first quarter of 2014 and it is our highest score ever! Even more meaningful, we are now benchmarking our results against 34 other NCI-designated Cancer Centers; our overall score for the period ending March 31 puts our rank at the 65th percentile against this peer group! Thank you to all of the physicians, nurses, and staff who continually strive to improve our patients' experience each day. I look forward to reporting steady gains to you in future

from the desk of

Thomas J. Lynch, Jr., MD

Director, Yale Cancer Center

Physician-in-Chief Smilow Cancer

Hospital at Yale-New Haven



Recent News

Read recent articles featuring experts from Yale Cancer Center [News Center >>](#)

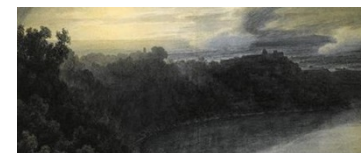
LATEST ARTICLES:



Cannolis for Cancer

APRIL 24, 2014

[Read More >>](#)



Art therapy for cancer patients helps manage emotions

APRIL 22, 2014

[Read More >>](#)

quarters for all of our outpatient clinics.

Clinical Redesign Efforts Save Money

In an effort to position Smilow Cancer Hospital and our Care Centers for financial success moving forward, we have instituted several clinical redesign efforts to ensure our success beginning this calendar year. The first initiative is to review the inpatient administration of rituximab, in cases where appropriate moving it to the outpatient clinics after a patient is discharged. This thoughtful review of resource consumption by a specific outpatient population has provided us with a savings along with a positive impact of nearly \$1 million. Second, we have reduced patient admissions for administration of ifosfamide by 70%, an often unnecessary inpatient admission. This is the right treatment in the right setting for patient-centered care. Savings have yielded \$20,000 thus far. A third initiative is to reduce inpatient stays by .5 days for patients following surgical procedures for Head and Neck malignancies. By streamlining testing, patients are able to be discharged 1/2 day sooner. Lastly, we are also reviewing the utilization of inpatient PET scans over the coming year.

Additional priorities are also underway to initiate palliative care in advanced stage lung cancer at an earlier stage of care; to improve access and patient experience for patients requiring testing through the Smilow Pulmonary Function Lab; and to expand our palliative care program for improved accessibility for all patients in need. I look forward to sharing with you additional successes in these areas and welcome other ideas you may have for consideration.

Notables

Barbara Burtness, MD has recently published **Molecular Determinants of Head and Neck Cancer** in the *Current Cancer Research Series* (Series Editor: Wafik El-Deiry, MD).

Development Update

The Yale Cancer Center leadership welcomed the Sackler family to campus on Wednesday, April 23 for a celebration of their endowed gift of the Richard and Jonathan Sackler Professorship in Medicine. The Sacklers gave the gift in 2009, which is expressly intended to be held by those appointed as Director of Yale Cancer Center. Dr. Thomas Lynch was named the Richard and Jonathan Sackler Professor in Internal Medicine in 2010.




Yale-New Haven's
'Checkup from the Neck Up'
APRIL 21, 2014


[Read More >>](#)


Follow Yale Cancer Center on Twitter


Follow us on  [twitter](#)


LATEST TWEETS:

 RT @AACR: We applaud @US_FDA's proposal to extend regulatory authority to more #tobacco products like #ecigs: <http://ow.ly/w80IF>

 We do not know the nature of the long-term health consequences...regulation of these products[e-cigs] is welcomed by @AACR. @DrRoyHerbstYale

 F.D.A. Will Propose New Regulations for E-Cigarettes <http://nyti.ms/1HaHoF>

 Thank you to @bankofamerica for their sponsorship of @ridecloser2free! Join us on September 6th for an amazing day! <http://bit.ly/1jPPQtX>

 MT @OncLive: Ellen T. Matloff from @YaleCancer on Changes to the Field of Genetic Testing <http://ow.ly/w2mUS> @MatloffGenie

Join Yale Cancer Center on Facebook

Like us on  [Facebook](#)

LATEST POSTS:

There is still time to register campers to join Yale's Camp Kesem



Standing:
left-right: Dr. Thomas Lynch, Dr. Richard Sackler, Jonathan Sackler, and Dean Robert Alpern.
Seated:
Mr. and Mrs. Raymond and Beverly Sackler.



Left to Right:
Dr. Roy Herbst, Dr. Joseph Schlessinger, Dr. Daniel DiMaio, Dr. Lajos Pusztai, Dr. Thomas Lynch, Abe Lopman, and Dr. Howard Hochster

Closer to Free

Bank of America has signed on as the Closer to Free Ride's first-ever presenting sponsor!

"The Ride has become a marquis fundraising event for Smilow, and serves as an annual rallying point for cancer survivors and their support teams," said Bill Tommins, Bank of America's Southern Connecticut market president, in a release. "Our involvement will help amplify the Ride's reach, bringing even more attention to an anchor institution in our community."

The Closer to Free Ride is set for Saturday, Sept. 6 with routes

for a fun filled week this summer! This FREE, student-run, camp is designed for the children of current or former cancer patients.



[Read More >>](#)

Learn about the LEAN Study - A lifestyle, exercise and nutrition intervention for women with breast cancer. The study is available for women to participate in at Yale Cancer Center and [Yale School of Public Health](#).



[Read More >>](#)

Did you know that Smilow Cancer Hospital has a Patient and Family Resource Center with a lending library, educational events, and drop-in discussion sessions?



[Read More >>](#)

Closer to Free

closer to free

The fund to advance cancer research and enhance patient care

of 25, 62.5, and 100 miles. Last year, more than 1,000 participants helped raise over \$1.2 million to support patient programs and research at Smilow Cancer Hospital and Yale Cancer Center.

Join us at this year's ride! Each cyclist must pay a \$100 registration fee, and raise a minimum of \$400 to ride. For anyone interested in riding or volunteering, visit www.rideclosetofree.org

Employee Profile: Kathryn Pratt

The Employee Profile recognizes the diverse contributions made by Yale Cancer Center and Smilow Cancer Hospital staff to meet our patient care, research, education, and outreach goals. The staff profiled are examples of the great work being done here, and the dedication and values we possess.

To suggest someone to be profiled, please contact [Emily Fenton](#).

As one of two Autologous Stem Cell Transplant Coordinators at Smilow Cancer Hospital at Yale-New Haven, Kathryn Pratt helps guide patients through the autologous stem cell transplant process. With autologous transplant, a patient's own stem cells are collected and then returned to them, usually after they receive treatment with high dose chemotherapy. Kathryn mainly works with patients that have been diagnosed with myeloma or lymphoma.



The main focus of Kathryn's work is educating patients. She answers their questions regarding the process, and lets them know what to expect. She is also responsible for ensuring all components of the autologous stem cell process run smoothly. This entails coordination with referring physicians, obtaining required laboratory and imaging tests, arranging for chemotherapy prior to cell collection, coordinating apheresis and cell preparation, scheduling of high dose chemotherapy with stem cell rescue, and coordinating post stem cell care. She follows patients throughout the process and keeps track of where they need to be and makes sure everyone in the various departments are aware of the patient's treatment plan and any special requirements.

Events

April 25; 7:30 AM
Endocrine Tumor Board
NP4-215B
[Learn More >>](#)

April 25; 9:00 AM
Free Head and Neck Cancer Screening
East Pavilion Cafeteria Special Event Room, Yale-New Haven Hospital
[Learn More >>](#)

April 25; 12:00 PM
Liver Tumor Board
NP4-215B
[Learn More >>](#)

April 25; 12:00 PM
YCC Research in Progress Lecture
Smilow Cancer Hospital, 4-101A
Novel Targeted Therapies and Clinical Trial Designs for the Treatment of Lung Cancer
Roy Herbst, MD, PhD
[Learn More >>](#)

April 25; 12:00 PM
YCC Research in Progress Meeting
NP4-101A
Novel Targeted Therapies and Clinical Trial Designs for the Treatment of Lung Cancer
Roy S. Herbst, MD, PhD
[Learn More >>](#)

April 25; 1:00 PM
Hematology/Leukemia Tumor Board
WWW 208
[Learn More >>](#)

April 25; 1:15 PM
Neuro-Oncology Tumor Board
NP4-215B
[Learn More >>](#)

April 26; 8:30 AM
Immuno-Oncology Forum
Omni New Haven Hotel at Yale
Focus on NSCLC
[Learn More >>](#)

April 27; 6:00 PM

"I enjoy being the go to person for stem cell transplant patients. Patient education is a big part of what I do and I spend a lot of time with patients, answering questions and giving them an idea of what to expect," said Kathryn. "I get to work with a lot of different departments in the hospital since there is a lot involved with a transplant. In the nine years I have been in this role, I have gotten to know a lot of wonderful people."

In 2013, Kathryn was nominated for the Schwartz Compassionate Caregiver Award and Kirsten A. Pedersen, RN, OCN, Service Line Educator for Hematology-Oncology, had these words of support, "Kathryn completes all of her tasks with thoroughness and skill. The most important component, the education and support of the patient and their family, is where Kathryn shines. Kathryn tailors her communication to each individual patient and family."

Funding and Award Opportunities

Smith Family Research Awards for Excellence in Biomedical Research

- To support promising young scientists engaged in new and innovative research in all areas of **basic** biomedical science.
- Investigators in physics, chemistry, and engineering with biomedical research projects are also encouraged to apply.
- Clinical research is beyond the scope of this program.
- Candidates must be full-time independent investigators who have completed not more than 2 years of a junior faculty appointment and will have been appointed to their **first independent** appointment between July 1, 2012 and December 1, 2014.
- \$300,000 to be used over a period of 3 years. (\$300,000)

Internal Application Deadline: May 7, 2014

[Learn More >> \(PDF\)](#)

Alex's Lemonade Stand Foundation

We are pleased to announce that grant guidelines and applications are now open for submission in the following categories:

'A' Awards

NEW in 2014, the award amount has increased to \$150,000 per year for three years! Designed for early career scientists with an original project who can demonstrate outstanding mentorship and have a strong future commitment to pediatric cancer investigation. This award totals \$450,000 over three

Yale Cancer Center Answers

WNPR 90.5

"The Role of Radiation in Treating Cancer"

David Carlson, PhD

[Learn More >>](#)

April 28; 7:30 AM

Thoracic Oncology Tumor Board

NP 4-215B

[Learn More >>](#)

April 28; 12:00 PM

Genitourinary (GU) Tumor Board

NP4-215B

[Learn More >>](#)

April 28; 3:00 PM

Head & Neck Tumor Board

NP4-215B

[Learn More >>](#)

April 28; 3:00 PM

YCC Signal Transduction Research Program

SHM I-116

"HER2 Localization and Signaling: What Does A Calcium Pump Got To Do With It?"

John Wysolmerski, MD

[Learn More >>](#)

April 28; 4:30 PM

Precision Medicine Tumor Board

NP4-215B

[Learn More >>](#)

April 29; 8:30 AM

Lymphoma/Stem Cell Meeting

NP4-215B

[Learn More >>](#)

April 29; 9:30 AM

Pathology Research in Progress Talks

The Anlyan Center Auditorium, TAC N-109

"ISL1 Cardiac Progenitor Cells: A New Cell Source for Cardiac Repair" and "TBA"

Linette Bosques; Oscar Bartulos-Encinas PhD

[Learn More >>](#)

April 29; 12:00 PM

Yale Cancer Center Grand Rounds

Smilow Auditorium

"Tobacco Control in the Hospital Emergency Department" and "Laser

years and is open to MD, MD/PhD and PhD candidates.

Application Deadline: May 23, 2014

Reach Awards

Our Reach Awards are designed to move hypothesis-driven research toward the clinic. The goal of this award is to support selected "late translational" studies needed to ultimately initiate a clinical trial. A successful application will identify an unmet clinical need relevant to the care of pediatric cancer patients and describe how the proposed project will allow for the pre-clinical research to be translated to the clinic while keeping broader clinical testing and implementation in view. Maximum of \$250,000 in total costs awarded over two years.

Application Deadline: May 30, 2014

[Learn More >>](#)

Lung Cancer Research Foundation Grants

Support research on innovate strategies for better treatments, screening, and prevention of all cancers of the lung. These awards are designed to provide critical seed support for cutting-edge scientific research on all lung cancers and will support projects with a focus on basic science, translational research, clinical research, supportive care, and quality of care/outcomes. Up to \$50,000 for 1 year.

Application Deadline: June 16, 2014

[Learn More >>](#)

Department of Defense Breast Cancer Research Program

Era of Hope Scholar Award

Independent, non-mentored investigators within 6 years of their last training position (e.g., postdoctoral fellowship, medical residency, clinical fellowship) as of the application submission deadline

- Supports exceptionally talented, creative early-career scientists who have demonstrated that they are the "best and brightest" in their fields.
- PIs should articulate a vision that challenges current dogma and demonstrates an ability to look beyond tradition and convention.
- PIs should exhibit strong potential for leadership in the breast cancer community
- PIs must include breast cancer advocates on their research team.
- Maximum funding of \$2.5M for direct costs (plus indirect costs)
- Period of performance not to exceed 5 years

Letter of Intent Deadline: August 1, 2014

Application Deadline: August 15, 2014

Innovator Award

Associate Professor or above (or equivalent)

- Supports visionary individuals who have demonstrated creativity, innovative work, and leadership in any field.

Thermocoagulation: New Developments in Neurosurgery for Oncology"

Steven Bernstein, MD, Veronica Chiang, MD

[Learn More >>](#)

April 29; 4:30 PM

Gastrointestinal Tumor Board

NP4-215B

[Learn More >>](#)

April 29; 4:30 PM

Gynecologic Oncology Conference

621 EP 2nd Floor

[Learn More >>](#)

April 29; 4:30 PM

Yale Cancer Center Evening Oncology Series

Smilow Cancer Hospital at Yale-New Haven, North Pavilion Room 4-101 A & B

Gastrointestinal Cancer

Howard Hochster, MD and the GI Cancer Program

[Learn More >>](#)

April 30; 7:00 AM

The Yale Stress Center Class

RYT Suite 209

Therapeutic Yoga

Anne Dutton, MA

[Learn More >>](#)

April 30; 12:00 PM

Thoracic Oncology Meeting

NP 4-215B

Lung Cancer Case Presentation

[Learn More >>](#)

April 30; 4:30 PM

Breast Tumor Board

NP4-215B

[Learn More >>](#)

May 1; 7:30 AM

Melanoma Tumor Board

NP4-215B

[Learn More >>](#)

May 1; 12:30 PM

Gastrointestinal Cancer Multidisciplinary Intake Conference

NP4-215B

[Learn More >>](#)

May 1; 4:00 PM

Pediatric Tumor Board

NP4-215B

- Provides opportunity to pursue novel, visionary, high-risk ideas that will accelerate progress toward ending breast cancer.
- PIs must include breast cancer advocates on their research team.
- Nomination is required; self-nominations are accepted; application submission is by invitation only.
- Maximum funding of \$5M for direct costs (plus indirect costs)
- Period of performance not to exceed 5 years

Nomination Deadline: May 14, 2014

Invited Application Deadline: August 15, 2014

Breakthrough Award

- Investigators at all academic levels (or equivalent)
- Postdoctoral fellows are eligible to apply
- Supports promising research that has the potential to lead to or make breakthroughs in breast cancer.
- Potential impact of the research may be near-term or long-term, but it must be significant and go beyond an incremental advancement.
- Partnering PI Option allows two PIs, termed Initiating and Partnering PIs, to collaborate on a single application.
- Four different funding levels, based on the scope of research, are available. It is the responsibility of the PI to select the funding level that is most appropriate for the research proposed.
- Period of performance not to exceed 5 years

Letter of Intent Deadline: May 14, 2014

Full Application Deadline: May 28, 2014

[Learn More >>](#)

Recent Publications

Induction of Antigen-Specific Immunity with a Vaccine Targeting NY-ESO-1 to the Dendritic Cell Receptor DEC-205.

Dhodapkar MV, Sznol M, Zhao B, Wang D, Carvajal RD, Keohan ML, Chuang E, Sanborn RE, Lutzky J, Powderly J, Kluger H, Tejwani S, Green J, Ramakrishna V, Crocker A, Vitale L, Yellin M, Davis T, Keler T.

Sci Transl Med. 2014 Apr 16;6(232):232ra51.

[Read More >>](#)

Experience With Thoracoscopic Pneumonectomies at a Single Institution.

Kim AW, Fonseca AL, Boffa DJ, Detterbeck FC. Innovations (Phila). 2014 Apr 21.

[Read More >>](#)

[Learn More >>](#)

**May 2; 7:30 AM
Endocrine Tumor Board**

NP4-215B

[Learn More >>](#)

**May 2; 10:30 AM
Sarcoma Tumor Board**

NP4-215B

[Learn More >>](#)

**May 2;
12:00 PM**

Liver Tumor Board

NP4-215B

[Learn More >>](#)

**May 2; 1:00 PM
Hematology/Leukemia Tumor Board**

WWW 208

[Learn More >>](#)

**May 2; 1:15 PM
Neuro-Oncology Tumor Board**

NP4-215B

[Learn More >>](#)

**May 2; 1:30 PM
Kidney Cancer Support Group**

NP4-101B

[Learn More >>](#)

**May 4; 6:00 PM
Yale Cancer Center Answers**

WNPR 90.5

Hematologic Malignancies

Steven Gore, MD

[Learn More >>](#)

**May 5; 7:30 AM
Thoracic Oncology Tumor Board**

NP 4-215B

[Learn More >>](#)

**May 5; 11:00 AM
CANCELLED
Yale Cancer Center Sarcoma
Conference Pathology
Department**

EP 2-646

[Learn More >>](#)

**May 5; 12:00 PM
Epigenetics Interest Group
Meeting**

SHM 1-116

[Learn More >>](#)

**May 5; 12:00 PM
Genitourinary (GU) Tumor Board**

Risk factors for ovarian cancers with and without microsatellite instability.

Segev Y, Pal T, Rosen B, McLaughlin JR, Sellers TA, Risch HA, Zhang S, Sun P, Narod SA, Schildkraut J.
Int J Gynecol Cancer. 2014 May;24(4):664-9.

[Read More >>](#)

Risk stratification in follicular neoplasm: A cytological assessment using the modified Bethesda classification.

Ustun B, Chhieng D, Van Dyke A, Carling T, Holt E, Udelsman R, Adeniran AJ.
Cancer Cytopathol. 2014 Apr 18.

[Read More >>](#)

Clinical management of renal cell carcinoma with venous tumor thrombus.

Agochukwu N, Shuch B.
World J Urol. 2014 Apr 22.

[Read More >>](#)

Decision Analysis of Stereotactic Radiation Surgery Versus Stereotactic Radiation Surgery and Whole-Brain Radiation Therapy for 1 to 3 Brain Metastases.

Lester-Coll NH, Dosoretz AP, Yu JB.
Int J Radiat Oncol Biol Phys. 2014 Apr 18.

[Read More >>](#)

Recurrent activating mutation in PRKACA in cortisol-producing adrenal tumors.

Goh G, Scholl UI, Healy JM, Choi M, Prasad ML, Nelson-Williams C, Kuntsman JW, Korah R, Suttorp AC, Dietrich D, Haase M, Willenberg HS, Stålberg P, Hellman P, Akerström G, Björklund P, Carling T, Lifton RP.
Nat Genet. 2014 Apr 20.

[Read More >>](#)

Immune-based antitumor effects of BRAF Inhibitors rely on signaling by CD40L and IFN- γ .

Ho PC, Meeth KM, Tsui YC, Srivastava B, Bosenberg MW, Kaech SM.
Cancer Res. 2014 Apr 15.

[Read More >>](#)

Expression of DNAJB12 or DNAJB14 Causes Coordinate Invasion of the Nucleus by Membranes Associated with a Novel Nuclear Pore Structure.

Goodwin EC, Motamedi N, Lipovsky A, Fernández-Busnadiego R, Dimaio D.
PLoS One. 2014 Apr 14;9(4):e94322.

[Read More >>](#)

The KRAS-Variant and miRNA Expression in RTOG Endometrial Cancer Clinical Trials 9708 and 9905.

Lee LJ, Ratner E, Uduman M, Winter K, Boeke M, Greven KM,

NP4-215B

[Learn More >>](#)

May 5; 3:00 PM

Head & Neck Tumor Board

NP4-215B

[Learn More >>](#)

May 5; 4:30 PM

Precision Medicine Tumor Board

NP4-215B

[Learn More >>](#)

May 5; 5:30 PM

Yale Cancer Center Thoracic Oncology Program: "Lung Cancer Support Group" Speaker: Linda David, RN ||| Irene Scanlon, LCSW
NP4-101B

[Learn More >>](#)

May 6; 8:30 AM

Lymphoma/Stem Cell Meeting NP4-215B

[Learn More >>](#)

May 6; 9:30 AM

Pathology Research in Progress Talks
TAC N-109
Katrina Meeth
Daniel Gadala-Maria
[Learn More >>](#)

May 6; 12:00 PM

Yale Cancer Center Grand Rounds

Smilow Auditorium
"Cancer Health Equity in New Haven Challenges and Opportunities" and "Identification of Potential Protein Biomarkers of Early Recovery after Kidney Transplant"
Andrea Silber, MD, Christopher Colangelo, PhD
[Learn More >>](#)

May 6; 4:30 PM

Gastrointestinal Tumor Board

Smilow, NP4-215B

[Learn More >>](#)

May 6; 4:30 PM

Gynecologic Oncology Conference

621 EP 2nd Floor
[Learn More >>](#)

May 7; 7:00 AM

The Yale Stress Center Class

Suite 209
Therapeutic Yoga
Anne Dutton, MA, RYT

King S, Burke TW, Underhill K, Kim H, Boulware RJ, Yu H, Parkash V, Lu L, Gaffney D, Dicker AP, Weidhaas J. PLoS One. 2014 Apr 14;9(4):e94167.

[Read More >>](#)

Identifying gene-environment and gene-gene interactions using a progressive penalization approach.

Zhu R, Zhao H, Ma S.

Genet Epidemiol. 2014 Apr;38(4):353-68.

[Read More >>](#)

A Targeted Next-Generation Sequencing Assay Detects a High Frequency of Therapeutically Targetable Alterations in Primary and Metastatic Breast Cancers: Implications for Clinical Practice.

Vasan N, Yelensky R, Wang K, Moulder S, Dzimitrowicz H, Avritscher R, Wang B, Wu Y, Cronin MT, Palmer G, Symmans WF, Miller VA, Stephens P, Puzstai L.

Oncologist. 2014 Apr 7.

[Read More >>](#)

PEA15 regulates the DNA damage induced cell cycle checkpoint and oncogene-directed transformation.

Nagarajan A, Dogra SK, Liu AY, Green MR, Wajapeyee N. Mol Cell Biol. 2014 Apr 7.

[Read More >>](#)

Interactive effects of individual and neighborhood race and ethnicity on rates of high-grade cervical lesions.

Waggaman C, Julian P, Niccolai LM.

Cancer Epidemiol. 2014 Apr 3.

[Read More >>](#)

[Learn More >>](#)

May 7; 12:00 PM

Thoracic Oncology Meeting

NP 4-215B

Lung Cancer Case Presentation

[Learn More >>](#)

May 7; 4:30 PM

Breast Tumor Board

NP4-215B

[Learn More >>](#)

May 8 7:30 AM

Melanoma Tumor Board

NP4-215B

[Learn More >>](#)

May 8; 12:30 PM

Gastrointestinal Cancer Multidisciplinary Intake Conference

NP4-215B

[Learn More >>](#)

May 8; 4:00 PM

Pediatric Tumor Board

NP4-215B

[Learn More >>](#)

May 9; 7:30 AM

Endocrine Tumor Board

NP4-215B

[Learn More >>](#)

May 9; 12:00 PM

Liver Tumor Board

NP4-215B

[Learn More >>](#)

May 9; 1:00 PM

Hematology/Leukemia Tumor Board

WWW 208

[Learn More >>](#)

May 9; 1:00 PM

Molecular Virology Research Program

In vivo Imaging of Retroviral Spread

Xaver Sewald, PhD

SHM I-116

[Learn More >>](#)

May 9; 1:15 PM

Neuro-Oncology Tumor Board

NP4-215B

[Learn More >>](#)

Employment

Opportunities

Success in any clinical research endeavor, but especially in cancer research, requires the most qualified, dedicated staff, committed to excellence and the mission of Yale Cancer Center. The combination of education, oncology research experience, and exceptional nursing skills is enormously difficult to find. Your participation, as knowledgeable colleagues, is invaluable at this time.

Should you know individuals with outstanding clinical research nursing experience, and who are ready to join our team, please direct resumes to [Sandra Greer](#), Sr. Staffing and Career Development Representative or call (203) 432-5822. All referrals will be held in strictest confidence.

Submissions

Please submit your recent publication and grant announcements to:

Renee Gaudette
Director, Public Affairs and Marketing
renee.gaudette@yale.edu

 Forward to a Friend