

March 20, 2015

Announcements



Dr. Patricia LoRusso Named to Board of AACR

I am very proud and pleased to announce that our colleague, Pat LoRusso, has been elected to serve on the American Association for Cancer Research Board of Directors for the 2015-2018 term, beginning at the annual meeting in April. Please join me in congratulating Pat on this well deserved honor. In addition to her role on the AACR Board, she is currently chair-elect designate of the AACR Women in Cancer Research

Council, co-chair of the Annual Meeting Clinical Trials Committee, and an editorial board member of Molecular Cancer Therapeutics.

Smilow Town Hall on Monday

Please join the leadership of Smilow Cancer Hospital for a Town Hall meeting on Monday in the auditorium at 55 Park Street. Lunch will be served at 11:30 and the program will convene at noon. Cathy Lyons will join me to present a Year in Review and update of our accomplishments; Abe Lopman and Sonia Grizzle will provide an update on our financial status; and Rogerio Lilenbaum and Anne Chiang will give an overview from our 11 Care Centers.

If you are unable to join us in person, please [login](#) to participate online.

Lisa Fucito Named Director of Smoking Cessation Program

Lisa Fucito, PhD, Assistant Professor of Psychiatry, has been named Director of the Smoking Cessation Program at Smilow Cancer Hospital. Dr. Fucito was formerly a Staff Psychologist at the Substance Abuse Treatment Unit of the CT Mental Health Center and will continue her research on novel interventions for

from the desk of

Thomas J. Lynch, Jr., MD

Director, Yale Cancer Center

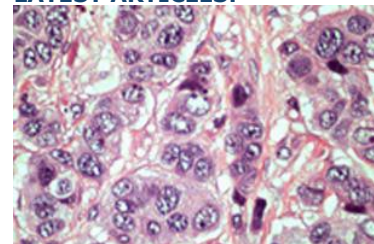
Physician-in-Chief Smilow Cancer Hospital at Yale-New Haven



Recent News

Read recent articles featuring experts from Yale Cancer Center [News Center >>](#)

LATEST ARTICLES:



How Much Can Women Trust That Breast Cancer Biopsy [Read More >>](#)



Dr. Petrylak on Immunotherapy for Second-line Treatment in Bladder

smoking and heavy drinking. She currently has a career award from the National Institute of Alcohol Abuse and Alcoholism to develop and evaluate an integrated intervention for smoking cessation and heavy drinking. In addition to her research activities, Dr. Fucito serves as the co-chair of the Treatment Network Advisory Committee of the Society for Research on Nicotine and Tobacco. As part of her role, she has led policy statements regarding FDA labeling of nicotine replacement products and the need to pair smoking cessation services with lung cancer screening.

Join us at ASCO

Please save Saturday night at ASCO to attend a reception and dinner hosted by Yale Cancer Center. The event will be held on May 30, 2015 at 7:00 PM at Quartino Ristorante, located at 626 N. State Street in Chicago. This will be a time for all Yale Cancer Center faculty and members who are attending ASCO to get together and should be a wonderful evening. Please send your RSVP to [Christen Ruff](#) by Friday, May 1, 2015.

Notables

Evan Morris, PhD, a member of Yale Cancer Center's Radiobiology and Radiotherapy Program, has been awarded a **Fulbright Scholar** grant to conduct research and teach next winter at Hadassah Hospital and Hebrew University in Jerusalem. While in Israel, Dr. Morris will work to set up and establish the PET imaging analysis technology he invented to study the brain's response to smoking cigarettes. The next step for his research is to study the brains of not-yet-addicted smokers. In the U.S., most new smokers are not yet 18 years old, and would not be admitted into a research study using PET imaging and radioactivity. In Israel, however, all Israelis are required to serve in the military, and many start smoking during that period and after age 18. This represents a unique opportunity for investigating the early stages of smoking-dependence using the technology Dr. Morris pioneered.

Smilow Cancer Hospital Hematology Program staff, friends, and families were recently recognized as a 1st place corporate team by the Leukemia & Lymphoma Society for their efforts raising over \$2000 to support the Society in its annual **Light the Night Walk** at Lighthouse Point. Team captain was Lisa Barbarotta, APRN and team co-captain was Maureen McGlennon.

Cancer

[Read More >>](#)



Yale doctor calls new treatment for lung cancer 'miraculous'

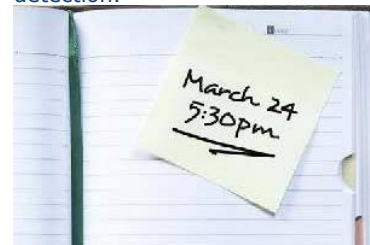
[Read More >>](#)

Join Yale Cancer Center on Facebook

Like us on Facebook 

LATEST POSTS:

80-90% of colorectal cancers can be prevented with early detection and screening. Attend a free program next Tuesday, March 24th to learn the latest information on Colorectal Cancer risk, screening, and detection.

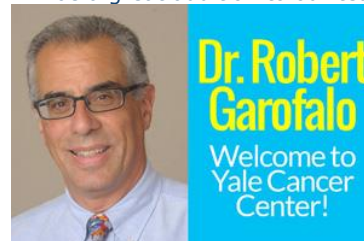


[Read More >>](#)

Welcome to Yale Cancer Center Robert Garofalo, PhD! Dr. Garofalo will join our leadership team next week as Associate Director for Research Affairs. In that role, he will oversee our Research Program infrastructure and Core Grant activities for our National Cancer Institute Comprehensive Cancer Center Grant. Dr. Garofalo most recently served as Chief of



Endocrine, Metabolism, Nutrition, and Reproductive Sciences Integrated Review Group at the NIH. His extensive scientific background, as well as his leadership experience at the NIH will be a great addition to our team!



[Read More >>](#)

Colon cancer is an often preventable disease and West Haven Mayor Ed O'Brien is sharing his story to spread the word. During a routine colonoscopy in January, doctors detected a growth in Mayor O'Brien's colon. Shortly thereafter, doctors at Yale-New Haven Hospital's St. Raphael campus removed a portion of the mayor's colon. Mayor O'Brien was luck to have detected his growth early. Doctors said that if he had waited a year, the results could have been much worse.



[Read More >>](#)

Research in the News

Concurrent Chemoradiation Treatment at High-Volume Facilities Improves Survival for Non-Small Cell Lung Cancer Patients

Patients treated with definitive concurrent chemotherapy and radiation therapy (CCRT) for stage III non-small cell lung cancer (NSCLC) have longer overall survival when treated by highly experienced facilities, whether or not they are academic or community cancer centers.

Lung cancer is the leading cause of cancer related death in the US with 159,000 deaths and 224,000 diagnoses each year, with NSCLC accounting for 85% of the cases. The stage of lung cancer is determined based on the size of the tumor, the extent and location of lymph node involvement, and whether or not the tumor has metastasized to distant regions. Approximately one quarter of NSCLC cases are diagnosed at stage III, with only 25% of those patients surviving at least 5 years. National Comprehensive Cancer Network guidelines support the use of definitive CCRT as a standard-of-care treatment option for patients with locally advanced stage III NSCLC.

[Read More >>](#)

Employee Profile: Tammy Keeman

Earlier this week, we kicked off our preparations for the 5th Annual [Closer to Free Ride!](#) Raising \$1.7 million toward patient care and cancer research last year thanks to more than 700 riders and 300 volunteers, the ride is Yale Cancer Center's and Smilow Cancer Hospital at Yale-New Haven's largest annual fundraiser.

This year's ride is on September 12! Register to Ride or Volunteer Today!

At the Smilow Cancer Hospital Care Center at Waterbury, Tammy Keeman, PCA, is a welcome sight for patients and co-workers alike. She greets patients when they come in for appointments, takes their vitals, and makes sure everything is set-up before the physician comes in to see them. Some patients then receive chemotherapy treatment, and Tammy makes sure they are comfortable and have everything they need.



Tammy also assists with certain procedures such as bone marrow biopsies. Providing a support system for patients and their families while they are there is another large part of her job and she is a huge advocate for patients and gets to know them very well. Some come in daily, and others on a weekly basis.

"If I can put a smile on a patients face, especially while they are in this environment dealing with a diagnosis of cancer, I know I have done my job. There is lots of laughter here, which I think is essential. I work with a great group of nurses and doctors as well, and I love coming into work every day," said Tammy. "It is great to see patients doing well and is very rewarding for me."

Tammy has been in this role for 18 years, and has spent all of those years with Dr. Kert Sabbath and 15 years with Nurse Practitioner Karen Hammond. Dr. Sabbath commented that Tammy is one of the best medical assistants he has worked with, and that he could not function without her there. Karen mentioned how much the patients adore her, and how she goes above and beyond for them.

"Tammy is a wonderful asset to our team. She is always pleasant even on the most demanding days. She is efficient and skilled in all that she does. Her positive attitude is contagious to staff, patients, and families. She is so deserving of this recognition," said Karen.

Funding and Award Opportunities

PhRMA 2015 Research & Hope Awards

The PhRMA Research & Hope Awards is a prestigious honor that recognizes advances made across a critical disease or health condition by individuals or organizations in the biopharmaceutical sector, academia/government, and the provider and patient communities. It is a celebration of the science, achievements to date, the possibilities to come and the vital role played by members of the biomedical research





[Read More >>](#)


Follow Yale Cancer Center on Twitter


Follow us on 


LATEST TWEETS:

 What Patients Prefer to Know
<http://nyti.ms/1BNFiLF>

 What do women need to know about for #breastcancer biopsy @nancyschute speaks Dr. David Rimm Via @nprnews
<http://n.pr/1GXvIqI> @YaleMed

 Expertise vs Evidence in Assessment of Breast Biopsies
<http://ja.ma/1F2KzXk> coauthored by Yale's Dr. David Rimm

 Molecular profiling for recurrent #glioblastoma is an exciting area #precisionmedicine #immunooncology #BrainTumour --Dr. Murat Gunel

 Studies of Second-Line Immunotherapies in Bladder Cancer Hold Promise
<http://shar.es/1fwPIQ> via @Onclive

Closer to Free

closer to free

The fund to advance cancer research and enhance patient care

ecosystem in addressing unmet medical needs and public health imperatives.

The 2015 Research & Hope Awards will honor innovators in the area of oncology research and development, including recent advances in prevention or treatment and/or promising projects in development. Within the "Excellence in Research" categories, honorees may be nominated from across the spectrum of the ecosystem - scientists working in academic research institutions, government agencies and biopharmaceutical companies (domestic and international).

Application Deadline: March 23, 2015

[Learn More >>](#)

Basser Research Center for BRCA

External Research Grant Program Announcement

The Basser Research Center for BRCA at Penn Medicine's Abramson Cancer Center announces the Basser External Research Grant Program, which focuses on projects that have the potential to advance the care of individuals living with BRCA1 and BRCA2 mutations. Research grant applications in basic science, prevention, early detection, or targeted therapeutics and **relevant to the study of BRCA1/2** will be considered. **Grants that demonstrate a potential for translation into clinical practice will be prioritized for funding.**

Funding Level: Basser Innovation Award. Three \$100,000, one-year, high-risk idea projects will be awarded.

LOI Deadline: Monday, March 30, 2015.

[Learn More >>](#)

Yale-CORE Career Development Program in Patient-Centered Outcomes Research

The Yale-CORE Career Development Program in Patient-Centered Outcomes Research (Y-CORE PCOR) is an AHRQ-funded K12 program within the Yale-New Haven Hospital Center for Outcomes Research and Evaluation that is designed to train junior faculty and postdoctoral fellows in patient-centered outcomes research. Y-CORE PCOR will provide training and career development support for 2 scholars who have a clinical or research doctoral degree and are committed to a career in patient-centered outcomes research (PCOR) and comparative effectiveness research (CER).

Application Deadline: April 1, 2015

[Learn More >>](#)

Alex's Lemonade Stand Foundation Infrastructure Grants

We understand the expense of labor intensive pediatric clinical trials. The **Infrastructure Grant** is designed to help an institution build capacity for and maintain a pediatric oncology Phase I and II clinical trials program by providing funding for adequate

Events

March 20; 1:00 PM YCC Developmental Therapeutics & Molecular Virology Research Program

SHM I-116

*Assessing Toxicity Potential of
Nucleotide Inhibitors of the Hepatitis
C Virus In Vitro*

Joy Y. Feng

[Read More >>](#)

March 22; 6:00 PM Yale Cancer Center Answers

WNPR

*Colorectal Cancer Awareness Series
Part III: Clinical Trials*

Howard Hochster, MD

[Read More >>](#)

March 23; 11:30 AM Yale Cancer Center/Smilow Cancer Hospital Town Hall Meeting

Park Street Auditorium

David Vinas

[Read More >>](#)

March 23; 2:00 PM Yale Stem Cell Center Seminar Series

TAC N-107

*Hematopoiesis, Normal and
Reprogrammed*

Kateri Moore, DVM

[Read More >>](#)

March 24; 12:00 PM Yale Cancer Center Grand Rounds

Park Street Auditorium

*Targeting Triple-Negative Breast
Cancer*

Rita Nanda, MD

[Read More >>](#)

staffing, patient care, data management, etc.

Application Deadline: April 10, 2015

[Learn More >>](#)

NCCN Request for Proposals (RFP): Phase I/II Clinical Trials and Pre-Clinical Trials of Enzalutamide for Endometrial Cancer

Funds of \$450,000 are still available to support novel preclinical and clinical studies of enzalutamide in patients with endometrial cancer. Pre-clinical laboratory and correlative/translational studies investigating the clinical relevance of AR expression to disease biology and progression or mechanisms of resistance to enzalutamide will also be considered. Clinical trials and preclinical studies involving rational enzalutamide combination approaches will be considered if supported by strong mechanistic rationale.

Application Deadline: April 27, 2015

[Learn More >>](#)

Alex's Lemonade Stand Foundation "A" Awards

Designed for early career scientists with an original project who can demonstrate outstanding mentorship and have a strong future commitment to pediatric cancer investigation. The grant is open to MD, MD/PhD and PhD investigators. Maximum of \$450,000 awarded over three years.

Application Deadline: May 22, 2015

[Learn More >>](#)

Recent Publications

Docetaxel and prednisone with or without lenalidomide in chemotherapy-naive patients with metastatic castration-resistant prostate cancer (MAINSAIL): a randomised, double-blind, placebo-controlled phase 3 trial.

Petrylak DP, Vogelzang NJ, Budnik N, Wiechno PJ, Sternberg CN, Doner K, Bellmunt J, Burke JM, de Olza MO, Choudhury A, Gschwend JE, Kopyltsov E, Flechon A, Van As N, Houede N, Barton D, Fandi A, Jungnelius U, Li S, de Wit R, Fizazi K. *Lancet Oncol.* 2015 Mar 2.

[Read More >>](#)

Expertise vs evidence in assessment of breast biopsies: an atypical science.

Davidson NE, Rimm DL.

JAMA. 2015 Mar 17;313(11):1109-10.

[Read More >>](#)

Patients selected for definitive concurrent chemoradiation at

March 24; 5:30 PM YCC/Smilow Cancer Hospital Colorectal Cancer Awareness Program

Park Street Auditorium

What You Need to Know About

Preventing Colorectal Cancer

Howard Hochster, MD, James

Farrell, MD and Xavier Llor, MD,

PhD

[Read More >>](#)

March 25; 1:00 PM YCC Genetics and Genomics Research Program

Giarman Room

A Transcription Switch that Controls

Endogenous and HDV-induced

Oncogenic Transformation

Alan Garen, PhD

[Read More >>](#)

March 26; 8:30 AM Therapeutic Radiology Grand Rounds

NP4-101A

Radiation Oncology Billing Overview

Brenda Fisser

[Read More >>](#)

March 26; 2:30 PM Pathology Thesis Seminar

TAC N-107

Combination High-Throughput

Compound Screening for Melanoma

and Lung Adenocarcinoma

Casey G. Langdon

[Read More >>](#)

March 27; 12:00 PM YCC Research in Progress Meeting

NP4-101A

TBA

Lucia Jilaveanu, MD, PhD

[Read More >>](#)

high-volume facilities achieve improved survival in stage III non-small cell lung cancer.

Wang EH, Rutter CE, Corso CD, Decker RH, Wilson LD, Kim AW, Yu JB, Park HS.
J Thorac Oncol. 2015 Feb 21.

[Read More >>](#)

Systematic approach to providing breast cancer survivors with survivorship care plans: a feasibility study.

Bulloch KJ, Irwin ML, Chagpar AB, Puzstai L, Killelea BK, Horowitz NR, Hofstatter EW, Abu-Khalaf MM, DiGiovanna M, Chung GG, Sanft TB.
J Oncol Pract. 2015 Mar;11(2):e170-6.

[Read More >>](#)

Electric light, particularly at night, disrupts human circadian rhythmicity: is that a problem?

Stevens RG, Zhu Y.
Philos Trans R Soc Lond B Biol Sci. 2015 May 5;370(1667).

[Read More >>](#)

Parents' Recall and Reflections on Experiences Related to HPV Vaccination for Their Children.

Niccolai LM, Hansen CE, Credle M, Shapiro ED.
Qual Health Res. 2015 Mar 16.

[Read More >>](#)

EGFR-directed antibodies increase the risk of severe infection in cancer patients.

Altan M, Burtneess B.
BMC Med. 2015 Dec;13(1):276.

[Read More >>](#)

Selecting early therapy in prostate cancer.

Petrylak D.
Clin Adv Hematol Oncol. 2015 Feb;13(2):124-5.

[Read More >>](#)

DUSP10 regulates intestinal epithelial cell growth and colorectal tumorigenesis.

Png CW, Weerasooriya M, Guo J, James SJ, Poh HM, Osato M, Flavell RA, Dong C, Yang H, Zhang Y.
Oncogene. 2015 Mar 16.

[Read More >>](#)

Gender differences in medication use and cigarette smoking cessation: results from the international tobacco control

**March 27; 1:00 PM
YCC 2014 Workplace Survey
Results Session**

Cohen Auditorium
Kevin Vest

[Read More >>](#)

**March 29; 6:00 PM
Yale Cancer Center Answers**

WNPR
The Healing Power of Plants
Nancy DuBrule-Clemente

[Read More >>](#)

**March 30; 12:00 PM
YCC/Epigenetics Interest Group
Special Seminar**

TAC N-203
*Establishment and Maintenance of
Epigenetic Information*
Bing Zhu, PhD

[Read More >>](#)

**March 31; 9:30 AM
Pathology Research in Progress
Talks**

TAC N-107
TBA

[Read More >>](#)

**March 31; 12:00 PM
Yale Cancer Center Grand
Rounds**

Park Street Auditorium
*Cervical Cancer Prevention and
Screening: HPV Vaccination &
Primary HPV Testing*
Sangini S. Sheth, MD, MPH
Uveal Melanoma
Miguel Materin, MD

[Read More >>](#)

**March 31; 5:00 PM
YCC Breast Clinical Lecture
Series**

Smilow First Floor Conference
Room, 1-330
TBA

four country survey.

Smith PH, Kasza KA, Hyland A, Fong GT, Borland R, Brady K, Carpenter MJ, Hartwell K, Cummings KM, McKee SA. Nicotine Tob Res. 2015 Apr;17(4):463-72.

[Read More >>](#)

Supporting Commission on Cancer-Mandated Psychosocial Distress Screening With Implementation Strategies.

Lazenby M, Ercolano E, Grant M, Holland JC, Jacobsen PB, McCorkle R. J Oncol Pract. 2015 Mar 10.

[Read More >>](#)

Radiation therapy in the locoregional treatment of triple-negative breast cancer.

Moran MS. Lancet Oncol. 2015 Mar;16(3):e113-e122.

[Read More >>](#)

Co-targeting ER and HER Family Receptors Induces Apoptosis in HER2-normal or Overexpressing Breast Cancer Models.

Chakraborty AK, Mehra R, Digiovanna MP. Anticancer Res. 2015 Mar;35(3):1243-50.

[Read More >>](#)

[Read More >>](#)

**April 1; 1:00 PM
YCC 2014 Workplace Survey
Results Session**

Park Street Auditorium
Kevin Vest

[Read More >>](#)

**April 2; 12:30 PM
Pathology Grand Rounds**

LMP 1094
*Glypican-1 and Cell Cycle
Abnormalities in Gliomas*
Andreas Friedl, MD

[Read More >>](#)

**April 2; 3:00 PM
Pathology Dissertation Defense**

TAC N-107
*ERBB4 Couples the ERBB Signaling
Network to the Hippo Pathway and
Cholesterol Homeostasis*
Jonathan Haskins

[Read More >>](#)

**April 2; 5:30 PM
YCC/Smilow Wellness Workshop**

Park Street Auditorium
The Healing Power of Plants
Nancy DuBrule-Clemente

[Read More >>](#)

Submissions

Please submit your recent publication and grant announcements to:

Renee Gaudette
Director, Public Affairs and Marketing
renee.gaudette@yale.edu

 Forward to a Friend

