

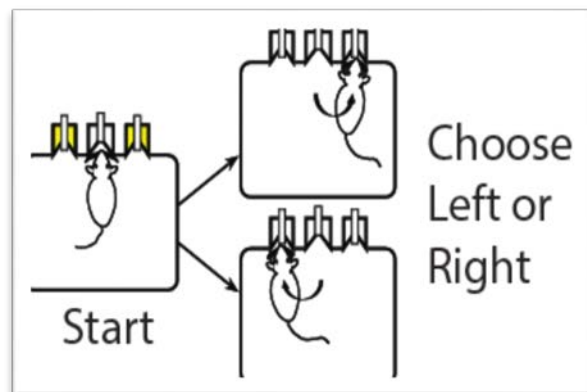
The Swartz Program in  
Theoretical Neurobiology  
Department of Neurobiology, Yale University



# Linda Wilbrecht, PhD

*Assistant Professor, Psychology  
University of California, Berkeley*

*Using Mice to Understand the Neural  
Basis of Value Based Decision Making*



**Thursday, May 14<sup>th</sup>, 4:00PM  
SHM I-500, Dome Room**