

DirectConnect

Inside Yale Cancer Center

July 14, 2023

Dear Colleagues,

I hope you are all enjoying the summer. This is one of two DirectConnect issues we will have this summer. The next one will be in mid-August, and we will then return to our every other week format in the fall.

Summer always feels a bit quieter and there are much-needed vacations, but our work continues. Sadly, cancer is not influenced by the seasons. Cancer research must carry on and our patients need clinical care 52 weeks a year.

A few quick updates:

- We are hard at work preparing the Cancer Center Support Grant (CCSG) application. The CCSG funds much of our infrastructure in Yale Cancer Center and allows us to continue to call ourselves an "NCI-Designated Comprehensive Cancer Center." The application deadline is mid-September, and our incredibly talented team is pushing to the finish line.
- From a clinical standpoint, we are moving forward with our efforts to bring Smilow and YCC in full alignment. As you know, this effort is part of a larger initiative between the Yale New Haven Health System and the School of Medicine. The overarching goal is to build the strongest possible health care system. From a cancer care standpoint, our clear focus is to further develop a statewide network system that provides unsurpassed subspecialty and multidisciplinary cancer care. Our approach will include the systemwide availability of cutting-edge and practice-changing clinical trials – a key component of cancer care and research.

As the summer progresses, we are working ever more swiftly towards these goals. Foremost is the recognition that we must provide the very best care throughout our system, working diligently to minimize, and ultimately eliminate, cancer care disparities.

Final reminder: Consider signing up to ride or volunteer for **Closer to Free** on Saturday, September 9. The Ride is less than two months away.

Be well. Be safe. And have a great weekend.

Eric

Announcements

Susan Gueble, MD, PhD,



Eric P. Winer, MD

Director, Yale Cancer Center

Physician-in-Chief, Smilow Cancer Network

Yale
NewHaven
Health
Smilow Cancer
Hospital

Yale CANCER CENTER
A Comprehensive Cancer Center Designated
by the National Cancer Institute

News Center



A Story About Love



[Read More](#)

Smilow Cancer Hospital Nurses are

Riding in Closer to Free

Appointed to Therapeutic Radiology

The Department of Therapeutic Radiology is pleased to announce that Susan Gueble, MD, PhD, has been appointed as an Assistant Professor of Therapeutic Radiology and joined the Smilow Radiation Oncology team at Smilow Cancer Hospital in Trumbull. Dr. Gueble recently completed her residency training in radiation oncology here at Yale and served as a Chief Resident for the 2022-2023 academic year. She received her MD and PhD degrees as part of the medical scientist training program (MSTP) at Yale School of Medicine in 2018. Dr. Gueble's clinical focus is in caring for patients with gynecologic, prostate, and genitourinary malignancies. She will also join the gynecologic brachytherapy program at the Smilow Cancer Hospital New Haven campus.



Dr. Gueble's research focuses on DNA damage response pathways and the mechanisms of novel DNA modifying agents. As a physician-scientist, she will be developing a basic and translational research program with the goal of identifying new therapeutic strategies for the treatment of cancer. She is also part of the Neuroendocrine Tumor (NET) program. She was recently awarded a Spector Family Fund for Clinical Research and Investigation award in collaboration with the Yale Physician-Scientist Development Award (YPSDA) and Yale Center for Clinical Investigation (YCCI) Scholars Program, for her proposal entitled "Overcoming Temozolomide Resistance with a Novel MGMT-Dependent DNA Interstrand Crosslinking Agent in Non-Glioma Cancers."

James Laird, MD, Joins Smilow Cancer Hospital in Waterford

James Laird, MD, will join the Smilow Radiation Oncology team at Smilow Cancer Hospital in Waterford this month. Dr. Laird trained at Yale Cancer Center/Smilow Cancer Hospital and served as a Chief Resident for the 2022-2023 academic year. Throughout his training he has shown a strong dedication to providing excellent patient

care and has been a leader for the residency program.



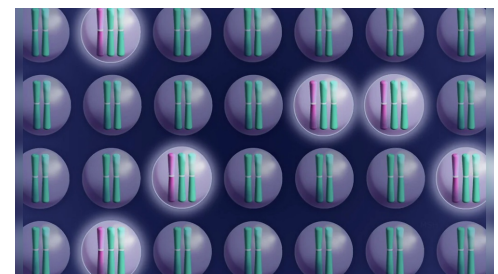
[Watch Now](#)

Gene Editing Helped Crack a 100-year-old Mystery About Cancer



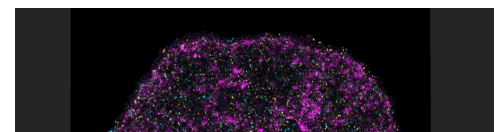
[Read More](#)

Eliminating Extra Chromosomes in Cancer Cells Prevents Tumor Growth

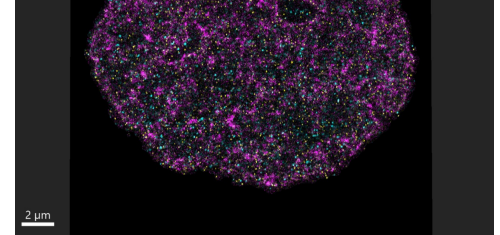


[Read More](#)

Supersize the Cell: Unlocking Secrets of the Genome Through Expansion Microscopy



Dr. Laird received his medical degree in 2018 from New York University School of Medicine, where he was inducted into Alpha Omega Alpha and named the highest performing student in preclinical training. During his training at Yale, he led the radiation oncology resident research consortium and presented his work at multiple national conferences. His academic interests include investigating the role of local treatments in oligometastatic cancer. His clinical practice will include thoracic, head and neck, and gastrointestinal malignancies.



[Read More](#)

**Cancer Patient Treated by L+M Doctor
Free of Tumors after Receiving New Drug**



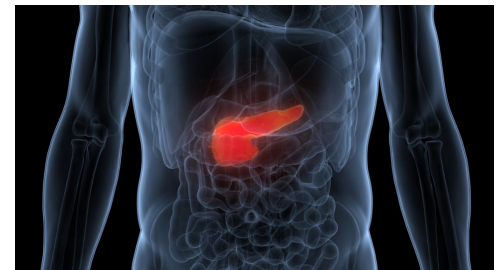
[Read More](#)

A Gaping Hole in Cancer-Therapy Trials



[Read More](#)

**Pancreatic Cancer Risk Lower if Cysts
Remain Stable for Five Years**



[Read More](#)

Don't Take Away Critical Surgery Options

Scott Huntington, MD, MPH, MSc, Appointed Interim Chief Quality Officer

We are pleased to announce Scott Huntington, MD, MPH, MSc, Associate Professor of Medicine (Hematology) and Medical Director of the Hematology Outpatient Program, as Interim Chief Quality Officer for Smilow Cancer Hospital.

An innovator in health services research and care delivery, Dr. Huntington specializes in the care of patients with lymphoma and chronic lymphocytic leukemia. He is an active member of Yale's Cancer Outcomes, Public Policy, and Effectiveness Research (COPPER) Center, where he leads research focused on improving the delivery of complex cancer treatment during routine care. Prior to joining Yale, he completed his hematology-oncology training and received a Master of Science in Health Policy Research at the University of Pennsylvania.



Notables

Michael Hurwitz, MD, PhD, Associate Professor of Medicine (Medical Oncology), has been appointed **Assistant Director of Cancer Research Training and Education Coordination (CRTEC)** for Yale Cancer Center. With the CRTEC efforts, Yale Cancer Center is a center of excellence in training the next generation of leaders in basic, translational, clinical, and

training the next generation of leaders in basic, translational, clinical, and population science cancer research. CRTEC, chaired by Harriet Kluger, MD, and co-led by Dr. Hurwitz and David Stern, PhD, is focused on bolstering and coordinating the training activities across the spectrum of disciplines.

Kiran Turaga, MD, MPH, Chief of Surgical Oncology and Assistant Medical Director of the Clinical Trials Office, has been awarded a **CA CURE Grant** from the **GI Research Foundation** to support his research into the “Development of 5hmc Based Plasma Signatures (Liquid Biopsy) in the Detection of Patients with Peritoneal Metastases.”

Mandar Muzumdar, MD, Assistant Professor of Medicine (Medical Oncology) and Genetics and Scientific Director of the Center for Gastrointestinal Cancers, has received funding for a **Research Project R01 Grant** from the NIH to support his research on “Dietary fatty acids drive pancreatic cancer development.”

Andrew Goodman, PhD, C.N.H. Long Professor of Microbial Pathogenesis, Director of the Yale Microbial Sciences Institute, and a member of Yale Cancer Center’s Developmental Therapeutics Research Program, has been appointed **Chair of the Department of Microbial Pathogenesis**.

Shuangge (Steven) Ma, PhD, Professor of Biostatistics and Director of the Biostatistics and Bioinformatics Shared Resource for Yale Cancer Center, has been appointed **Chair of the Department of Biostatistics** at Yale School of Public Health.

Ronan Talty, MD-PhD Candidate in the laboratory of Marcus Bosenberg, MD, PhD, received the **2023 ASA La Roche-Posay Medical Student Grant Targeting Melanoma and Skin Cancer** by **The American Skin Association** in recognition of his project, “Targeting Lipid Droplet Synthesis to Augment Melanoma Immunotherapy Responses.”

Anish Sharda, MD, MPH, Assistant Professor of Medicine (Hematology), is the 2023 recipient of the **JH Milstone Grant**. The JH Milstone Fund was established to support early-stage investigators with innovative research that improves the understanding of bleeding, thrombosis, or thrombolysis in memory of JH Milstone, MD, by his son, Leonard M. Milstone, MD '70, Professor Emeritus of Dermatology, and daughter-in-law, Ellen B. Milstone, MD '69.

Jeffrey Townsend, PhD, Elihu Professor of Biostatistics and Professor of Ecology and Evolutionary Biology; Co-Leader, Genomics, Genetics, & Epigenetics Research Program at Yale Cancer Center, received the **2023 Reducing Disease Risk Award** from **Yale School of Public Health** in recognition of his publication, “Attribution of Cancer Origins to Endogenous, Exogenous, and Preventable Mutational Processes.”

Caroline Johnson, PhD, Associate Professor of Epidemiology

(Environmental Health Sciences), was awarded the **2023 Women in Science (WomiX) Mentorship Award** from the **Metabolomics Association of North America** at their annual conference in June.

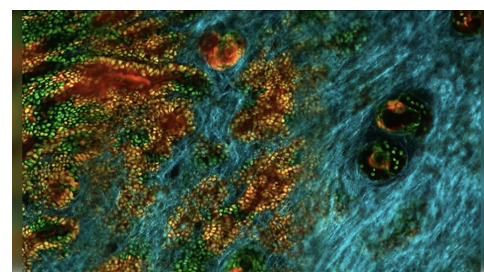
Maryam Lustberg, MD, MPH, Associate Professor of Medicine (Medical Oncology) and Director of the Center for Breast Cancer, presented at the **Multinational Association of Supportive Care in Cancer (MASCC) Annual**

from Breast Cancer Patients



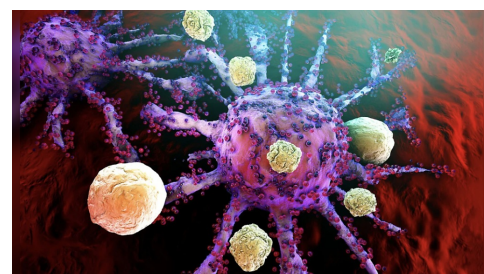
[Read More](#)

Harnessing the Power of Healthy Cells to Suppress Skin Cancer Formation



[Read More](#)

Study Hints at How Cancer Immunotherapy Can Be Safer



[Read More](#)

Yale Cancer Center Warns about Melanoma Risks as Summer Heats Up



Multinational Association of Supportive Care in Cancer (MASCC) Annual meeting in Japan in June on **Cancer Care 2030** to launch a global initiative to address global goals for supportive care research in cancer. Dr. Lustberg also served as the 2022-23 president of the organization.

Laura Baum, MD, MPH, Assistant Professor of Medicine (Medical Oncology) and a member of Yale Cancer Center's Cancer Prevention and Control Research Program, will present on "Trends in New and Persistent Opioid Use in Older Adults with and without Cancer" at the **International Society for Pharmacoepidemiology** annual meeting on August 26 during a spotlight presentation.

Veda Giri, MD, Division Chief, Clinical Cancer Genetics, Director, Cancer Genetics and Prevention Program, and Director, Early Onset Cancer Program, served as an invited Speaker at the **2023 Coffey-Holden Prostate Cancer Academy Meeting**.

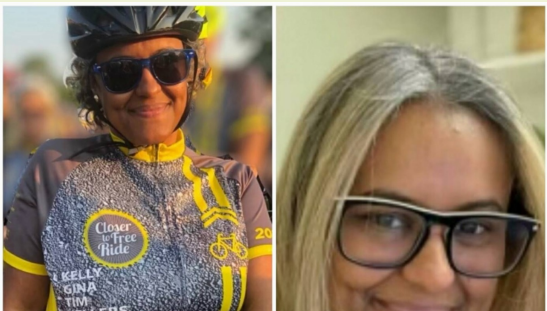
The **Cancer Prevention and Control Research Program** welcomes **Vidya Puthenpura, MD, MHS, FAAP**, Instructor of Pediatrics. Dr. Puthenpura is interested in investigating how health-related social risk can cause survival, recurrence, and adherence inequities in pediatric, adolescent, and young adult (AYA) patients with cancer. Her research has focused on outcome inequities amongst pediatric and AYA patients associated with differences in race, ethnicity, socioeconomic status, and geographic location. Her research is inspired by and interlinked with her clinical work as a pediatric hematologist/oncologist.



Employee Profile: Rosangely Cruz

Rosangely "Rosy" Cruz has worked at Yale for more than 23 years and says the experience has shaped her as

a person. Upon earning her associate degree from Gateway Community College, she entered a two-week externship in Derm-Path through the Yale Partnership program. At its completion, she received a full-time job



Watch Now



Molly West:

I am a survivor of stage IV Colon Cancer. I had my first occurrence in Sept '21 and a recent reoccurrence in Feb '23. I have gone through the same basic treatment (chemo and surgery) both times. Having to go through this a second time has given me more clarity about my journey and how to handle it. The first time was so terrifying and such a whirlwind that I didn't know what to do or how to handle the situation... Whereas the second time, I have knowledge about what to expect, and I can choose a different way of managing the process that works better for me. It's been important to continue to stay connected to family, friends, and co-workers and share my learnings along the way...



Read More

Recently on Yale Cancer Answers, cancer epidemiologist Dr. Maureen Canavan discussed ways to evaluate quality metrics for cancer care, especially when providing end-of-life care. Listen on Connecticut Public Radio or download our podcast from iTunes.



offer in Surgical Dermatology, launching her career at Yale. Of her service spanning two decades, Rosy says, "I love this organization; the journey has been long and hard, but it has been so rewarding."



Currently, Rosy is a Practice Administrator for Smilow Cancer Hospital. She supports clinical operations, including clinical operations managers, and nearly 90 medical assistants, clinical secretaries, and other supportive, patient-facing roles. She loves the scope and variety of her work, and always starts her team's daily huddle with a quote of the day or a team-building activity to set a positive tone.

"I look at life with a glass half-full approach," she says. "I look to set the tone for the day and hope the managers I work with carry this same positivity through to their teams. This work is incredibly important for me and recognizing the impact we have on patients. It's important to remember these are humans that we care for, and we are extremely fortunate to be a part of their care. It is a big responsibility."

Rosy is grateful to have worked with two leaders she considers mentors: Diana Glassman, RN, MBA, CNEL, Director of Urology, and Margaret Gilshannon, MHA, Deputy Director for Finance and Administration at Yale Cancer Center. When Rosy was first hired at Yale and joined medical records within Surgical Dermatology, Diana was her first supervisor and through the years has made a lifelong impression. "Rosy is a one-of-a-kind individual who has the ability to bring people together and solve problems," said Diana. "She is a master at work flows and always has the patient front and center in all her decision making. Any department is blessed to have her as part of their team."

For the last two years, Rosy has reported to Margaret and gained tremendous respect for her leadership. Rosy appreciates being given the room to lead her team with her own style. "Rosy joined the Cancer Center team during a period of transition and has been a remarkable manager and leader. She is smart, thoughtful, and courageous with an unwavering commitment to our patients. Smilow and the Cancer Center are incredibly lucky to have Rosy on our team!" Margaret said.

Among her notable achievements, Rosy earned her bachelor's degree in social science from Albertus Magnus College and is currently working on her master's degree in organizational leadership at Quinnipiac. She is also a six-year participant in Closer to Free, her most favorite event of the year. She rides with Team Gorilla Glue, sister team of Urology's Team Stream, led by her brother-in-law and husband.

Recent Publications

Snyder, R. A., Burtness, B., Cho, M., Del Rivero, J., Doroshov, D. B., Hitchcock, K. E., Kalyan, A., Kim, C. A., Lukovic, J., Parikh, A. R., Sanford, N. N., Singh, B., Shen, C., Shroff, R. T., Vijayvergia, N., Goodman, K. A., & Kunz, P. L.

The Room Where It Happens: Addressing Diversity, Equity, and

[Read More](#)

At Bridgeport Hospital, a new Hispanic Breast Cancer Program is launching, led by Monica Valero, MD, Assistant Professor of Surgery, and the hope is to make the breast cancer journey more manageable for patients in the growing Hispanic population.

"The mission of our program is to confront and overcome barriers the Hispanic population may face and improve access to equitable care," said Dr. Valero.



[Read More](#)

A warm thank you to Holmgren Subaru of North Franklin, Connecticut and the Leukemia and Lymphoma Society, for their partnership in a recent donation of approximately 80 blankets for patients at Smilow Cancer Hospital at Waterford.

The two organizations have been providing blankets to Smilow annually for about five years, as well as paper hearts with notes from Subaru customers that include sayings such as "stay strong," "thinking of you," and "There's no obstacle that you can't overcome!"



Inclusion in NCTN Clinical Trial Leadership.

Journal of the National Cancer Institute, djad121.

[Read More](#)

Canavan, M., Wang, X., Ascha, M., Miksad, R., Showalter, T. N., Calip, G., Gross, C. P., & Adelson, K.

End-of-Life Systemic Oncologic Treatment in the Immunotherapy Era: The Role of Race, Insurance, and Practice Setting.

Journal of clinical oncology: official journal of the American Society of Clinical Oncology, JCO2202180.

[Read More](#)

Ehrahimi, B., Howard, A., Carlson, D.J., Al-Hallaq, H.

ChatGPT: Can a Natural Language Processing Tool Be Trusted for Radiation Oncology Use?

Int J Radiation Oncol Biol Phys, Vol. 116, No. 5

[Read More](#)

Gelissen, J. H., Adjei, N. N., McNamara, B., Mutlu, L., Harold, J. A., Clark, M., Altwerger, G., Dottino, P. R., Huang, G. S., Santin, A. D., Azodi, M., Ratner, E., Schwartz, P. E., & Andikyan, V.

Hyperthermic Intraperitoneal Chemotherapy in Ovarian Cancer.

Annals of surgical oncology, 10.1245/s10434-023-13757-0.

[Read More](#)

Liu, C., Kuang, S., Wu, L., Cheng, Q., Gong, X., Wu, J., & Zhang, L.

Radiotherapy and radio-sensitization in H3K27M -mutated diffuse midline gliomas.

CNS neuroscience & therapeutics, 29(7), 1721–1737.

[Read More](#)

Bewersdorf, J. P., Xie, Z., Bejar, R., Borate, U., Boultonwood, J., Brunner, A. M., Buckstein, R., Carraway, H. E., Churpek, J. E., Daver, N. G., Porta, M. G. D., DeZern, A. E., Fenaux, P., Figueroa, M. E., Gore, S. D., Griffiths, E. A., Halene, S., Hasserjian, R. P., Hourigan, C. S., Kim, T. K., Zeidan, A. M.

Current landscape of translational and clinical research in myelodysplastic syndromes/neoplasms (MDS): Proceedings from the 1st International Workshop on MDS (iwMDS) Of the International Consortium for MDS (icMDS)

Blood reviews, 60, 101072.

[Read More](#)

Rosa, W. E., & Grant, L.

Palliative Justice Post-COP27.

The Yale journal of biology and medicine, 96(2), 257–260.

[Read More](#)

Pusztai L.

Systemic Staging of Locally Advanced Breast Cancer: How Hard to Look?

Journal of clinical oncology: official journal of the American Society of Clinical Oncology, JCO2300977.

[Read More](#)

Mirza, F. N., Mirza, H. N., Yumeen, S., Zogg, C. K., & Leffell, D. J.

Considering Sun Safety Policies in the United States.

The Yale journal of biology and medicine, 96(2), 251–255.

[Read More](#)

Surendran, H., Palaniyandi, T., Natarajan, S., Hari, R., Viwanathan, S., Baskar, G., Abdul Wahab, M. R., Ravi, M., & Rajendran, B. K.

Role of homeobox d10 gene targeted signaling pathways in cancers.

Pathology, research and practice, 248, 154643.

[Read More](#)

M. DeAngelo, D. J. Bewersdorf, J. P. Zeidan, A. M., & Stahl, M.

[Read More](#)

Theresa Magistro:

If I could tell my cancer care team one thing it would be...that my heart is filled with gratitude for all that my family and I receive from Smilow Cancer Hospital. My husband and I travel to New Haven from New Jersey because the care team makes a profound difference to our lives. Here we found a total healing community; a community providing care at every level, easing the anxiety and stress I face in battling this ugly disease.



[Read More](#)

Welcome Amro Tambal, MS, who is participating in the 2023 Yale Cancer Center Diversity Enhancement Program in Oncology. Amro is a Sudanese-American with a bachelor's degree in biomedical engineering and a master's degree in biomedical sciences from Rutgers University. In his current role as a second-year medical student at Rutgers New Jersey Medical School, he continues to pursue his passion for healthcare and oncology. Amro actively contributes to a student-run healthcare clinic in Newark, providing essential medical services to high-risk populations.

Furthermore, his commitment to addressing healthcare disparities is recognized through his status as a Removing Barriers to Success scholarship recipient at New Jersey Medical School.

Yale Cancer Center Diversity Enhancement Program in Oncology welcomes Amro Tambal, MS!



M., DeAngelo, D. J., Bewersdorff, J. P., Zeldin, A. M., & Stani, M.
Why do we not have more drugs approved for MDS? A critical viewpoint on novel drug development in MDS.

Blood reviews, 60, 101056.

[Read More](#)

Aneja, S., Avesta, A., Xu, H., & Machado, L. O.

Clinical Informatics Approaches to Facilitate Cancer Data Sharing.

Yearbook of medical informatics, 10.1055/s-0043-1768721.

[Read More](#)

Kim, L., Coman, M., Pusztai, L., & Park, T. S.

Neoadjuvant Immunotherapy in Early, Triple-Negative Breast Cancers: Catching Up with the Rest.

Annals of surgical oncology, 10.1245/s10434-023-13714-x.

[Read More](#)

DiSilvestro, J. B., Haddad, J., Robison, K., Beffa, L., Laprise, J., Scalia-Wilbur, J., Raker, C., Clark, M., Lokich, E., Hofstatter, E., Dalela, D., Brown, A., Bradford, L., Toland, M., & Stuckey, A.

Barriers to hormone therapy following prophylactic bilateral salpingo-oophorectomy in BRCA1/2 mutation carriers.

Menopause (New York, N.Y.), 30(7), 732–737.

[Read More](#)

Wiemels, J. L., Wang, R., Feng, Q., Yee, A. C., Morimoto, L. M., Metayer, C., & Ma, X.

Birth characteristics and risk of Ewing sarcoma.

Cancer causes & control: CCC, 10.1007/s10552-023-01737-4.

[Read More](#)

Moore, J. L., Bhaskar, D., Gao, F., Matte-Martone, C., Du, S., Lathrop, E., Ganesan, S., Shao, L., Norris, R., Campamà Sanz, N., Annusver, K., Kasper, M., Cox, A., Hendry, C., Rieck, B., Krishnaswamy, S., & Greco, V.

Cell cycle controls long-range calcium signaling in the regenerating epidermis.

The Journal of cell biology, 222(7), e202302095

[Read More](#)

Labaki, C., Saliby, R. M., Bakouny, Z., Saad, E., Semaan, K., Eid, M., Lalani, A. K., Choueiri, T. K., & Braun, D. A.

Emerging Biomarkers of Response to Systemic Therapies in Metastatic Clear Cell Renal Cell Carcinoma.

Hematology/oncology clinics of North America, S0889-8588(23)00076-X.

[Read More](#)

Curigliano, G., Dent, R., Llombart-Cussac, A., Pegram, M., Pusztai, L., Turner, N., & Viale, G.

Incorporating clinicopathological and molecular risk prediction tools to improve outcomes in early HR+/HER2- breast cancer.

NPJ breast cancer, 9(1), 56.

[Read More](#)

Weiss, A., Martínez-Sáez, O., Waks, A. G., Laws, A., McGrath, M., Tarantino, P., Portnow, L., Winer, E., Rey, M., Tapia, M., Prat, A., Partridge, A. H., Tolaney, S. M., Cejalvo, J. M., Mittendorf, E. A., & King, T. A.

Nodal positivity and systemic therapy among patients with clinical T1-T2N0 human epidermal growth factor receptor-positive breast cancer: Results from two international cohorts.

Cancer, 129(12), 1836–1845.

[Read More](#)

Bourdillon, A. T., Shah, H. P., Cohen, O., Hajek, M. A., & Mehra, S.

Novel Machine Learning Model to Predict Interval of Oral Cancer Recurrence for Surveillance Stratification.

The Laryngoscope, 133(7), 1652–1659.

[Read More](#)



[Read More](#)

We invite you to please Save the Date for “Caring for Metastatic Breast Cancer: A Conference for Patients & Caregivers,” a special in-person program on Saturday, October 7, from 9:00am to 3:00pm at Yale University’s Greenberg Center.

Hosted by Maryam Lustberg, MD, MPH, Director, Center for Breast Cancer at Smilow Cancer Hospital and Yale Cancer Center, and Sandy Cassanelli, Founder, Breast Friends Fund, remarks will include Eric Winer, MD, Director, Yale Cancer Center; Physician-in-Chief, Smilow Cancer Hospital.

The poster is for the 'Caring for Metastatic Breast Cancer: A Conference for Patients & Caregivers' held on Saturday, October 7, 2023, from 9am-3pm at The Greenberg Center, New Haven, CT. The poster features a pink background with a large heart outline, two butterflies, and the Yale Cancer Center logo. It lists the hosts: Maryam Lustberg, MD, MPH, Director, Center for Breast Cancer at Smilow Cancer Hospital and Yale Cancer Center, and Sandy Cassanelli, Founder, The Breast Friends Fund. It also lists the remarks by: Eric Winer, MD, Director, Yale Cancer Center; Physician-in-Chief, Smilow Cancer Hospital. The poster includes a QR code and the registration link: https://yale-cancer-center.ticketleap.com/caring-for-metastatic-breast-cancer. Logos for YaleNewHavenHealth Smilow Cancer Hospital, Yale Cancer Center, and Breast Friends Fund are at the bottom.

[Read More](#)

Mary Zaccarelli truly exemplifies the role of a Patient Experience Ambassador and is a #SmilowStar!

Mary is often the very first person patients, families, and staff members see when they enter Smilow Cancer Hospital. She is warm, engaging, and very helpful. In her role greeting patients entering Smilow on NP4 from Air Rights Garage, Mary sets the tone for patient experience for patients and

[Read More](#)

Saliby, R. M., Saad, E., Labaki, C., Xu, W., Braun, D. A., Viswanathan, S. R., & Bakouny, Z.

Novel Targeted Therapies for Renal Cell Carcinoma: Building on the Successes of Vascular Endothelial Growth Factor and mTOR Inhibition.

Hematology/oncology clinics of North America, S0889-8588(23)00077-1.

[Read More](#)

Zhan, P. L., Canavan, M. E., Ermer, T., Pichert, M. D., Li, A. X., Maduka, R. C., Udelsman, B. V., Nemeth, A., & Boffa, D. J.

Association Between Metastatic Pattern and Prognosis in Stage IV Gastric Cancer: Potential for Stage Classification Reform.

Annals of surgical oncology, 30(7), 4180–4191.

[Read More](#)

Antonarakis, E. S., Subudhi, S. K., Pieczonka, C. M., Karsh, L. I., Quinn, D. I., Hafron, J. M., Wilfehrt, H. M., Harmon, M., Sheikh, N. A., Shore, N. D., & Petrylak, D. P.

Combination Treatment with Sipuleucel-T and Abiraterone Acetate or Enzalutamide for Metastatic Castration-Resistant Prostate Cancer: STAMP and STRIDE Trials.

Clinical cancer research: an official journal of the American Association for Cancer Research, 29(13), 2426–2434.

[Read More](#)

Kim, L., Coman, M., Puztai, L., & Park, T. S.

ASO Visual Abstract: Neoadjuvant Immunotherapy in Early Triple-Negative Breast Cancers-Catching up with the Rest.

Annals of surgical oncology, 10.1245/s10434-023-13842-4.

[Read More](#)

Kahn, A. M., Golestani, R., Harigopal, M., & Puztai, L.

Intratumor spatial heterogeneity in programmed death-ligand 1 (PD-L1) protein expression in early-stage breast cancer.

Breast cancer research and treatment, 10.1007/s10549-023-06977-1.

[Read More](#)

Potnis, K. C., Viswanathan, G., Bona, R. D., Ito, S., Kempton, C. L., Pandya, A., Krumholz, H. M., & Goshua, G.

Cost-effectiveness of prophylactic emicizumab versus prophylactic recombinant factor VIII in patients with moderate or mild hemophilia A without inhibitors in the United States.

American journal of hematology, 10.1002/ajh.27014.

[Read More](#)

Pratz, K. W., Cherry, M., Altman, J. K., Cooper, B. W., Podoltsev, N. A., Cruz, J. C., Lin, T. L., Schiller, G. J., Jurcic, J. G., Asch, A., Wu, R., Hill, J. E., Gill, S. C., James, A. J., Rich, E. S., Hasabou, N., Perl, A. E., & Levis, M. J.

Gilteritinib in Combination With Induction and Consolidation Chemotherapy and as Maintenance Therapy: A Phase IB Study in Patients With Newly Diagnosed AML.

Journal of clinical oncology: official journal of the American Society of Clinical Oncology, JCO2202721.

[Read More](#)

Lewin, J., Schoenherr, S., Seebass, M., Lin, M., Philpotts, L., Etesami, M., Butler, R., Durand, M., Heller, S., Heacock, L., Moy, L., Tocino, I., & Westerhoff, M.

PACS-integrated machine learning breast density classifier: clinical validation.

Clinical imaging, 101, 200–205.

[Read More](#)

Funding and Award Opportunities

families coming through one of our most important front entrances. Kevin Billingsley, MD, MBA, says, “She treats patients like guests entering her home! She exemplifies our guest services standards, and her actions show her love for her work.” Thank you, Mary!



[Read More](#)

Dr. Eric Winer, Director of Yale Cancer Center and Physician-in-Chief of Smilow Cancer Hospital, discusses his theme 'Partnering with Patients' at the American Society of Clinical Oncology annual meeting. "I hope that the message that these partnerships are really important is something that resonates with people ...there's always room for some amount of improvement."



[Watch Now](#)

Jim Fraser, patient of Dr. Anne Chiang: If I could tell my cancer team one thing, it would be when I was diagnosed, I thought I was alone. The team quickly made me feel as though we were all in this together. From the surgical team to the radiation team to the infusion team, I was made to feel that everyone was invested. I cannot express enough my appreciation to all the doctors and thank God for the nurses whose caring really got me through it all.

Addressing the Primary Care Needs of Cancer Survivors (U01)

The purpose of this FOA is to support the development and testing of primary care practice (PCP)- and health system-level interventions and strategies to promote high quality care for adult cancer survivors during and/or after cancer treatment. The overall goal of this opportunity is to support high quality care for cancer survivors that integrates primary care from the point of diagnosis forward.

Application Deadline: July 24, 2023

[Read More](#)

Understanding Persistent Oral Human Papillomavirus and Human Immunodeficiency Virus Co-infection and Its Role with Oropharyngeal Cancer Induction (R01)

The purpose of this NOFO is to solicit research to better understand the mechanisms of persistent oral human papillomavirus (HPV) and human immunodeficiency virus (HIV) co-infection as well as its role in the induction and pathogenesis of HPV-associated oropharyngeal cancers (HPV-OPC).

Application Deadline: July 24, 2023

[Read More](#)

DoD Prostate Cancer Research Program Funding Opportunities for FY23

- **Early Investigator Research Award (EIRA)** - supports research opportunities focused on prostate cancer for individuals in the early stages of their careers. **LOI Due:** August 3, 2023
- **Exploration – Hypothesis Development Award (EHDA)** - supports the exploration of highly innovative, untested, potentially groundbreaking concepts in prostate cancer. **LOI Due:** June 22, 2023
- **Idea Development Award (IDA)** - supports new ideas that represent innovative, high-risk/high-gain approaches to prostate cancer research and have the potential to make an important contribution to one or more of the FY23 PCRCP Overarching Challenges. **LOI Due:** June 29, 2023
- **Physician Research Award (PRA)** - supports a mentored research experience to prepare physicians with clinical duties for careers in prostate cancer research. **LOI Due:** August 3, 2023

[Read More](#)

Understanding Persistent Oral Human Papillomavirus and Human Immunodeficiency Virus Co-infection and Its Role with Oropharyngeal Cancer Induction (R01)

The purpose of this NOFO is to solicit research to better understand the mechanisms of persistent oral human papillomavirus (HPV) and human immunodeficiency virus (HIV) co-infection as well as its role in the induction and pathogenesis of HPV-associated oropharyngeal cancers (HPV-OPC).

Application Deadline: July 24, 2023

[Read More](#)

Peer Reviewed Cancer Research Program Overarching Challenges

The PCRCP has developed a strategy to address multiple issues in cancer research over the spectrum of different cancer topics considered for funding. These Overarching Challenges are critical gaps in cancer research, care, and/or patient outcomes that will advance mission readiness of U.S. military members affected by cancer and improve quality of life by decreasing the burden of cancer on Service Members, their families, Veterans, and the American public.

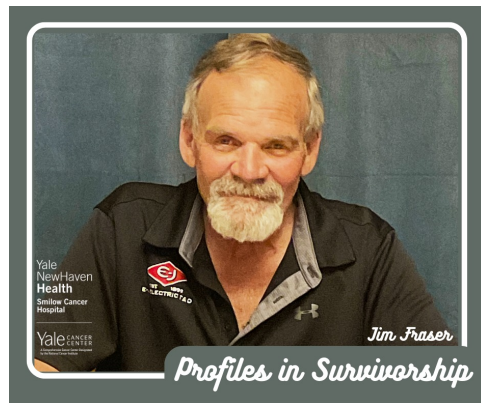
Letter of Intent Due: July 25, 2023

[Read More](#)

R50 NCI Specialist - Clinician Scientist - Clinical Trial Not Allowed (PAR-21-306)

Through this FOA, the NCI invites applications for the Research Specialist Award (R50) specifically for clinician scientists supporting NCI-funded clinical

really got me through it all.
I do not know how they can be so positive while fighting this terrible disease. I remember my first meeting at Smilow Cancer Hospital. There were so many people fighting to survive, I realized I was not alone—and I watched as every patient was treated the same.



[Read More](#)

Stephan Brigidi:

If I could tell my cancer care team one thing it would be...that I am grateful for the great attention and care that I received with the TULSA Procedure*. The process was very thorough and I was completely aware and prepared for the procedure and all that it entailed. I felt genuine concern for my care and was so happy with the team of Dr. Preston Sprenkle, Dr. Jessica Lee, and Dr. Sandeep Arora. I also appreciated the kind care shown to me by the anesthesiologists, and the vast team of nurses and technicians who assisted me throughout.



[Read More](#)

"In the Midst of it All" is a new podcast hosted by Jane Lealand, MDiv, Chaplain with the

trials research. The Research Specialist Award is designed to encourage the development of stable research career opportunities for exceptional clinician scientists who want to continue to participate in the NCI clinical trials networks through leadership in the 1) development of national clinical trials, 2) implementation of NCI clinical trials in their institutions, and 3) national service to the NCI clinical trials networks through participation in the scientific review committees, monitoring committees and other activities, but not serve as principal investigators of research project grants.

Internal Submission Deadline: August 3, 2023

[Read More](#)

Neurofibromatosis Research Program

The NFRP seeks to support innovative, high-impact research that will foster new directions for and address neglected issues in NF research; sponsor multidisciplinary and multi-institutional collaborations that will bring new perspectives to the field; promote translational and clinical studies to move promising ideas from bench to bedside; and develop a balanced portfolio of meritorious research related to all aspects of NF1, NF2, and Schwannomatosis.

- Neurofibromatosis Research Academy-Leadership Award - **Letter of Intent Due:** August 11, 2023
- Neurofibromatosis Research Academy-Scholar Award - **Letter of Intent Due:** August 11, 2023
- Clinical Trial Award - **Letter of Intent Due:** August 11, 2023
- Early Investigator Research Award - **Letter of Intent Due:** August 11, 2023
- Exploration – Hypothesis Development Award - **Letter of Intent Due:** August 11, 2023
- Investigator – Initiated Research Award - **Letter of Intent Due:** August 11, 2023
- New Investigator Award - **Letter of Intent Due:** August 11, 2023
- Synergistic Idea Award - **Letter of Intent Due:** August 11, 2023

[Read More](#)

2023 Yale SPORE in Skin Cancer Career Enhancement Program Awards

CEP projects must have promising translational research potential with application to human skin cancer. It is expected that they can evolve into projects with a clear translational component that are suitable for funding either within the Yale SPORE in Skin Cancer or as R01 or equivalent grants.

CEP Awards will support new investigative cutaneous oncologists and other scientists committed to multidisciplinary studies investigating the relevance of biological discoveries in human skin cancer risk, prevention, diagnosis, prognosis or treatment, and enhance the careers of individuals who are already productively investigating this field.

Application Deadline: August 14, 2023

[Read More](#)

2023 Yale SPORE in Skin Cancer Developmental Research Program Awards

DRP projects must have promising translational research potential with application to human skin cancer. It is expected that they can evolve into full projects with a clear translational component that are suitable for funding either within the Yale SPORE in Skin Cancer or as independent R01 or R01-equivalent grants.

DRP Awards are intended to support a broad spectrum of innovative pilot projects applicable to human skin cancer risk, prevention, diagnosis, prognosis, or treatment.

Application Deadline: August 14, 2023

[Read More](#)

DoD Melanoma Research Program Funding Opportunities

The FY23 Defense Appropriations Act provides funding for the Melanoma Research Program (MRP) to support innovative, high-impact melanoma research.

- **Idea Award:** to generate novel research avenues for investigation; therefore, novelty and innovation should be key aspects of the

by Jane Jeuland, MD/IV, Chaplain with the Palliative Care Program at Smilow Cancer Hospital. Jane interviews patients, caregivers, and clinicians that have been through it all, supported it all, and seen it all. Listen now on Spotify or Apple Podcasts and stay tuned for more episodes.

'In the Midst of it All'
a podcast of patient stories and interviews

We invite you to hear from people that have navigated work, kids, exercise, pain, relationships, faith, and spirituality in the midst of cancer. Many of the contributors have been where you are now. They hope that their words provide you with comfort and encouragement and help you know that you are not alone.

You can listen to "In the Midst of it All" on Apple podcasts or Spotify. This podcast is a project of the Palliative Care Program at Smilow Cancer Hospital. All the stories and interviews were written with and conducted by, Jane Jeuland, Palliative Care Chaplain.



YaleNewHavenHealth
Smilow Cancer Hospital

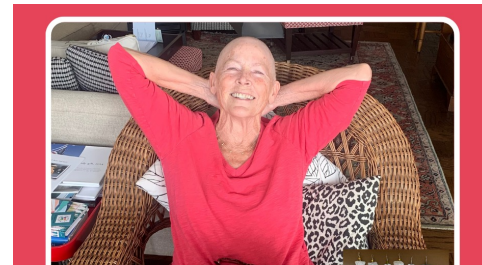
Yale
CANCER
CENTER
At the Smilow Cancer Hospital

[Read More](#)

Jane Silvestro:

Finding out last fall that I had cancer was a bit of a shock, because I had no history in my family... But then again, I asked myself why NOT me, as cancer seems to be so prevalent and so often random. Anyway, what can a girl do but take care of business, follow doctors' suggestions, etc. so I did.

I had heard that chemo treatments involve camaraderie and encouragement, at Smilow, and elsewhere, which I DID experience in a somewhat limited manner, because I kept falling sound asleep during my treatments. No one ever complained that I snored, but who knows? Even if everyone was talking about me, I would have been oblivious. During a Valentine's Day treatment, though, I woke up long enough to be offered a delicious piece of pink-frosted cake, that another patient had apparently brought in to share. It was so sweet (in both senses of the word) and I wondered to myself, 'what do I have to offer these lovely co-patients who I hardly get to chat with?' I immediately thought of an answer...



therefore, novelty and innovation should be key aspects of the proposed research.

Pre-Application Deadline: July 10, 2023

- **Melanoma Academy Scholar Award:** to develop a network of successful, highly DOD FY23 Melanoma Academy Scholar Award 5 productive melanoma researchers in a collaborative research and career development environment.

Pre-Application Deadline: August 31, 2023

- **Mid-Career Accelerator Award:** to support investigators who have laid the foundation for becoming leaders in the melanoma field and who intend to advance the state of the science in melanoma.

Pre-Application Deadline: August 31, 2023

- **Team Science Award:** to bring together investigators from divergent disciplines to achieve innovations and advancements in melanoma research and/or patient care that could not be achieved by any one investigator working independently.

Pre-Application Deadline: August 31, 2023

- **Focused Program Award – Rare Melanomas:** to support a multidisciplinary research program of at least two, but not more than three, distinct but complementary projects addressing an overarching question relevant to rare melanomas

Pre-Application Deadline: August 31, 2023

[Read More](#)

Advancing Cancer Control Equity Research Through Transformative Solutions (U19/U24)

This Notice of Funding Opportunity (NOFO) invites proposals for research centers to advance cancer control equity by stimulating community-engaged, multilevel research interventions that address the impact of social determinants of health (SDOH) on adverse cancer control outcomes.

Application Deadline: September 14, 2023

[Read More](#)

Gabrielle's Angel Foundation for Cancer Research 2023 Medical Research Awards

Identify two outstanding junior faculty members – one who is conducting mainstream or conventional research and one who is conducting complementary or integrative research – who would be willing to complete and submit a grant application for review. Gabrielle's Angel Foundation remains committed to funding innovative, translational proposals and to supporting promising independent early-career investigators, rather than well-established, senior scientists.

Application Deadline: September 15, 2023

[Read More](#)

The Leukemia & Lymphoma Society's Equity in Access Research Program

Through this program, LLS aims to generate new evidence that can guide policy reform and changes in healthcare practice, in order to mitigate the impact of social, economic and environmental disadvantages and reduce barriers to care.

Letter of Intent Due: September 15, 2023

[Read More](#)

DoD Kidney Cancer Research Program

KCRP supports research of exceptional scientific merit in kidney cancer.

- Academy of Kidney Cancer Investigators Early-Career Scholar Award - Preproposal Due: September 15, 2023
- Clinical Trial Award - Preproposal Due: September 15, 2023
- Idea Development Award - Preproposal Due: September 15, 2023
- Nurse-Initiated Research Award Preproposal Due: September 15, 2023
- Translational Research Partnership Award - Preproposal Due: September 15, 2023

[Read More](#)

NIH Institutional Excellence in Diversity, Equity, Inclusion, and Accessibility in Biomedical and Behavioral Research Prize Competition

The prize competition goals are as follows:



[Read More](#)



Congratulations to Dr. Mandar Muzumdar @MuzumdarLab

whose #R01 grant application to study 'Dietary fatty acids drive pancreatic cancer development' has been funded!



Dr. Francis Lee: "Decreasing cancer burden in bone is clinically very important. Using a min. invasive surgical procedure, we can recovery time, pain, & provide function after 1 year for patients w/cancer met. to the bone."



.@DrRoyHerbstYale & colleagues share the interim results of an adaptive phase II #clinicaltrial of pembrolizumab-based combo therapy in #NSCLC, providing an individualized approach to treatment.



"Every sunburn is dangerous," says Dr. Kathleen Suozzi @suozziskindoc, explaining how the UV exposure can introduce mutations into the skin, potentially leading to #skincancer.



At 7:30pm on Yale Cancer Answers, cancer epidemiologist Dr. Maureen

Canavan discusses ways to evaluate #quality metrics for #cancer care, especially when providing end-of-life care. Listen live on @wnpr or download our podcast from @iTunes.



A new study published in @ScienceMagazine by Dr. Jason Sheltzer @jsheltzer shows that by using #CRISPR technology to remove extra chromosomes in #cancer cells, the cells were unable to fuel tumor growth.



Ronan Talty, MD-PhD Candidate in the lab of @MarcusBosenberg, was awarded the 2023 ASA La Roche-Posay Medical Student Grant Targeting #Melanoma and #SkinCancer by The American Skin Association @american_skin1.

1. To recognize and reward institutions whose biomedical, social, and behavioral science schools, departments, centers, or divisions have identified gaps with respect to diversity, equity, inclusion, and accessibility (DEIA) and have designed, implemented, and evaluated interventions to address these gaps to achieve sustained improvement in DEIA within their faculty, postdoctoral scholars, and student bodies.

2. To identify effective practices for enhancing DEIA within faculty, postdoctoral scholars, and student bodies that are feasible and can be disseminated for adoption by other institutions.

Application Deadline: September 26, 2023

Read More



.@MonicaValero16, director,
Hispanic #BreastCancer Program

@BPTHOSP: "The mission of our program is to confront + overcome barriers the Hispanic population may face + improve access to equitable care."



"Addressing #diversity #equity +
#inclusion in membership &

leadership across #NCTN groups will lead to more creative, innovative, inclusive #clinicaltrials" @PamelaKunzMD, Dr. Barbara Burtness, et al share @JNCI_Now #DEI



Save the date: Caring for Metastatic Breast Cancer: A Conference for

Patients & Caregivers



The decision to have #mastectomy is "complex and layered,"

MehraGolshan. It requires a shared decision-making between the patient and the provider.



Older patients are often underrepresented in #clinicaltrials of #cancer Rx. "It really calls into question how we're doing research & we have to double down on research that includes older patients."



Dr. Ilana Richman: "There are a few clear misrepresentations" of the

#breastcancer case numbers cited in the #TikTok video, which leads viewers to believe they are being shown case numbers just for women under 45.



Tonight at 7:30pm on Yale Cancer Answers @wnpr Drs. Maryam

Mooghali (left) & Reshma Ramachandran discuss existing challenges and inefficiencies in healthcare delivery, and possible solutions.

Calendar

Yale Cancer Answers

July 16, 7:30 PM

WNPR 90.5

Improving Outcomes for Patients Undergoing CAR T-Cell Therapy

Timothy Robinson, MD, PhD

Learn More

[Learn More](#)

7th Annual Live Medical Crossfire:

Hematologic Malignancies

July 22, 8:30 AM

[Learn More](#)

Yale Cancer Answers

July 23, 7:30 PM

WNPR 90.5

Using Digital Neurotherapy to Address Depression and Anxiety in Patients with Cancer

Bruce Wexler, MD

[Learn More](#)

Multidisciplinary Portal Hypertension and Vascular Liver Disorders Conference

July 25, 7:30 AM

[Learn More](#)

24th Annual International Lung Cancer Congress

July 27-29

[Learn More](#)

Smilow East Opening Celebration

July 28, 1:00 PM

55 Park Street Seminar Room

[Learn More](#)

Yale Cancer Answers

July 30, 7:30 PM

WNPR 90.5

New Research into the Early Detection of Ovarian Cancer

Stacy Malaker, PhD

[Learn More](#)



Share your news!

Please submit your recent publications, awards, and grant announcements to:

[Renee Gaudette](#)

Director, Public Affairs and Communications

Yale Cancer Center | 333 Cedar Street, New Haven, CT 06520

[Unsubscribe renee.gaudette@yale.edu](#)

[Update Profile](#) | [Constant Contact Data](#)

[Notice](#)

Sent by renee.gaudette@yale.edu powered by



Try email marketing for free today!