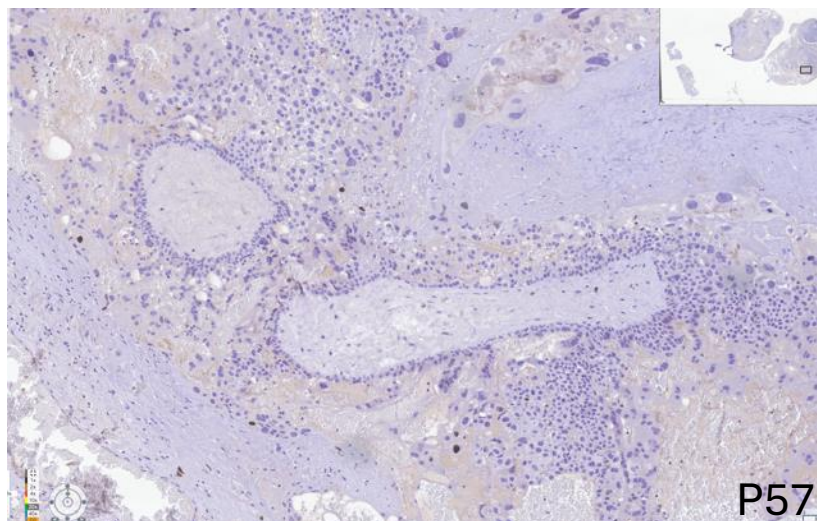
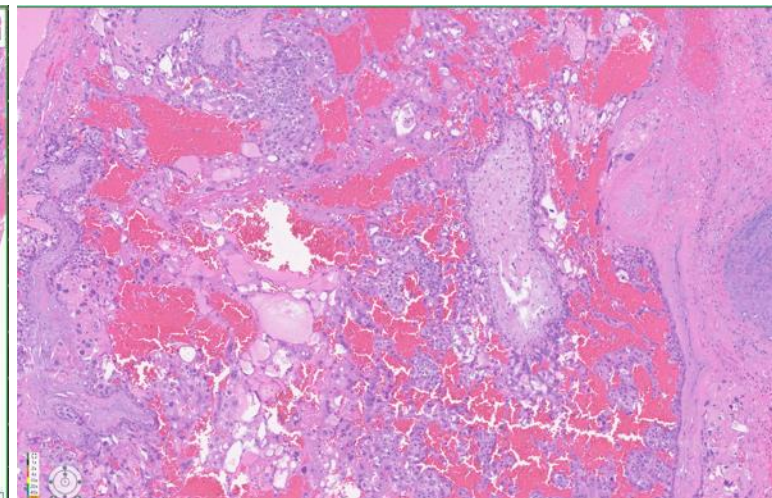
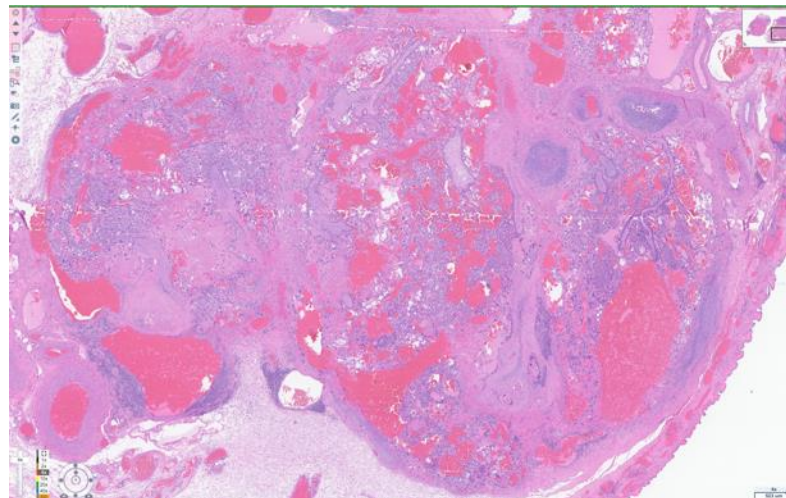
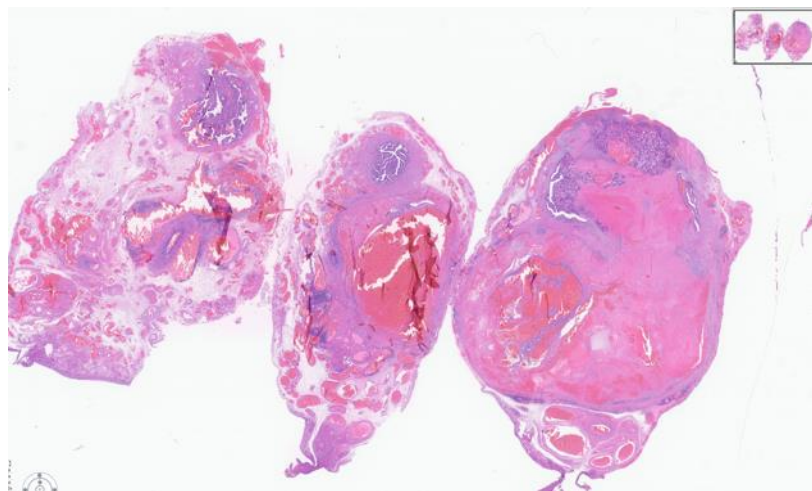
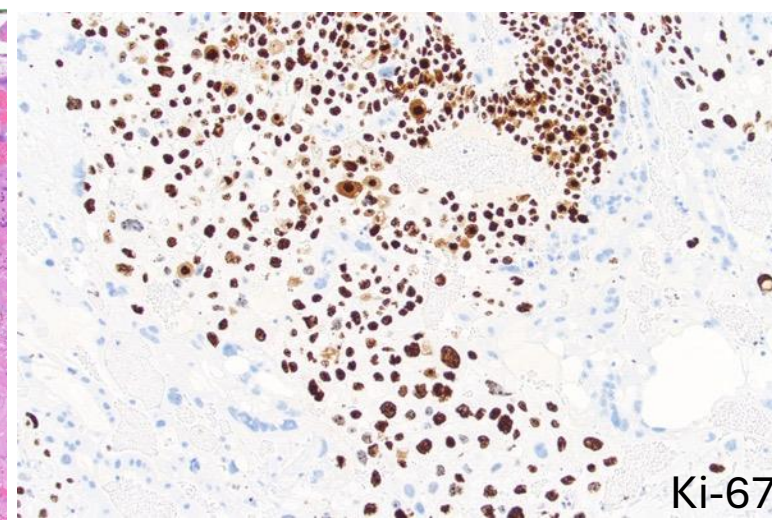
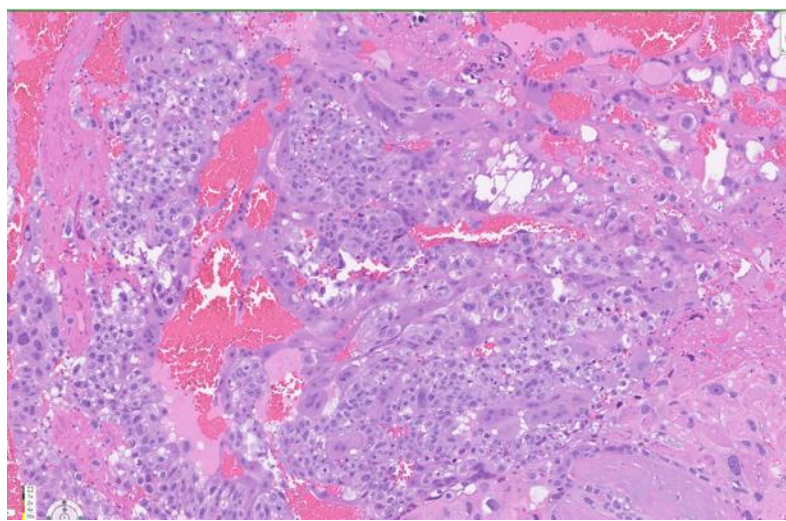




Patient in her 20s presenting with abdominal pain and elevated serum hCG, found to have a tubal ectopic pregnancy.



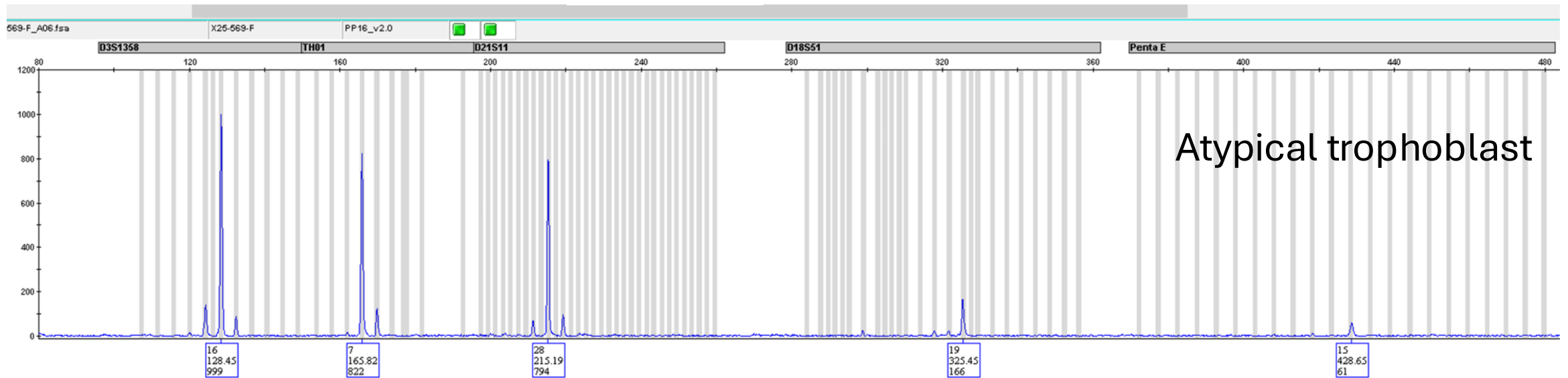
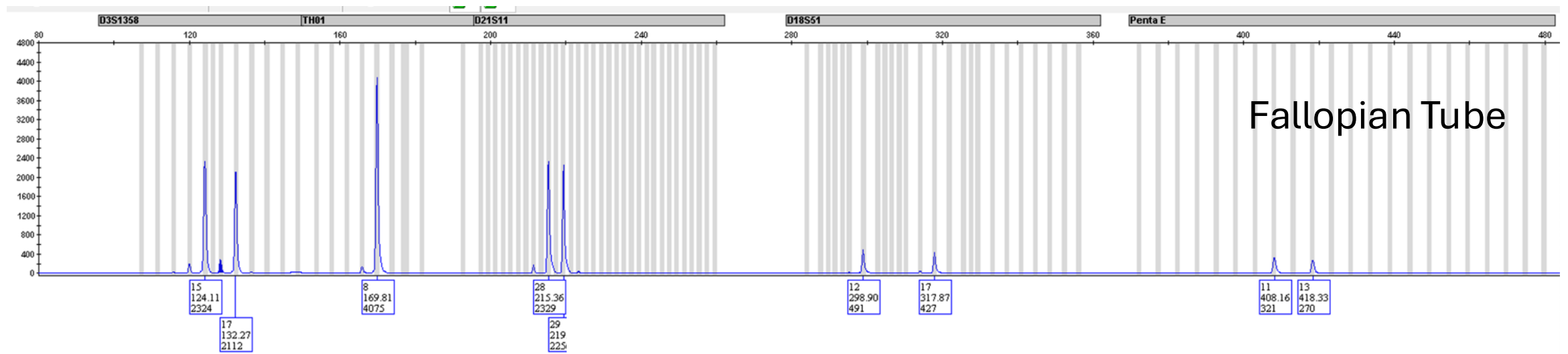
P57



Ki-67

Diagnostic Options

- A. Tubal gestation
- B. Early choriocarcinoma in tubal gestation
- C. Tubal complete mole
- D. Early choriocarcinoma in tubal complete mole



Note the homozygous allelic pattern in the trophoblasts, in contrast to the balanced biparental pattern observed in the fallopian tube.

There is an abundant solid and abnormal trophoblastic proliferation with biphasic growth of markedly atypical trophoblastic cells. A high Ki-67 labeling index ($>90\%$) is observed in the mononuclear trophoblasts. Scattered molar villi exhibit loss of p57 expression in both cytotrophoblasts and villous stromal cells. Comparative STR genotyping reveals a homozygous, paternal-only profile in the proliferating trophoblast, contrasting with a balanced biparental pattern in the fallopian tube.

Final Diagnosis

Early (intra-molar) choriocarcinoma arising from tubal complete mole