

DirectConnect

Inside Yale Cancer Center

August 7, 2020

Announcements

Pancreatic Cancer Summit

We look forward to Yale Cancer Center's first Pancreatic Summit on Monday, August 10, organized by our Gastrointestinal Cancers DART and the newly formed Yale Pancreatic Cancer Collaborative (YalePaCC). Pancreatic cancer is soon to become the second leading cause of cancer-related death in the U.S. Our goal is to bring together Yale researchers with diverse expertise to work collaboratively, to develop multi-PI and program projects in basic and translational research for grant opportunities (NIH, DoD, SU2C, foundations), to engage the next-generation of scientists in pancreatic cancer research, and to make rapid progress against this recalcitrant disease.

The Summit will feature Yale clinicians and scientists working in the field, and those developing new technologies and approaches that could be applied to pancreatic cancer research. Please register by 5pm on Friday, August 7 and plan to join us online.

[Learn More >>](#)

[Register >>](#)

from the desk of

Charles S. Fuchs, MD, MPH
Director, Yale Cancer Center
and Physician-in-Chief
Smilow Cancer Hospital



Yale
NewHaven
Health

**Smilow Cancer
Hospital**

Yale **CANCER
CENTER**

A Comprehensive Cancer Center Designated
by the National Cancer Institute

Omar Al Asad Joins Guilford Care Center

Please welcome Omar Al Asad, MD, Instructor of Clinical Medicine (Medical Oncology) to our Smilow Cancer Hospital Care Center in



Guilford. Dr. Al Asad received his Medical Degree from the University of Jordan, and completed his residency and fellowship at the University of Texas Medical Branch, where he received both an Outstanding Medical Oncology Fellow Award and a Resident of the Year Award. Many of you are familiar with Dr. Al Asad, who for the past three years has served as a Hematology/Oncology Hospitalist at Smilow Cancer Hospital and we look forward to his contributions in our Care Center Network.

T32 Training Grant in CPC Funded

I am pleased to announce that the NIH awarded a National Research Service Award Training Grant to fund our innovative cancer prevention and control training program at Yale Cancer Center and Yale School of Public Health. The 5-year, \$1.3 million, T32 grant will help train outstanding predoctoral and postdoctoral researchers in the area of cancer prevention and control under the leadership of Melinda Irwin, PhD, MPH, Associate Director of Population Sciences, and Xiaomei Ma, PhD, both Co-Leaders of our Cancer Prevention and Control Research Program.

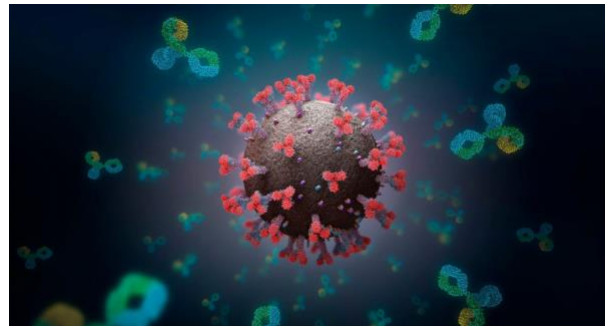
[Learn More >>](#)



News Center

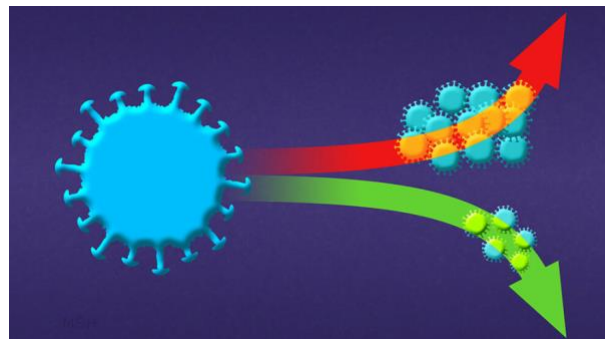
Video: Xavier Llor, MD, PhD, on Colorectal Cancer: Why Are More Younger People Being Affected?

[Watch Now >>](#)



Scared That Covid-19 Immunity Won't Last? Don't Be.

[Read More >>](#)



Immune System Variation Can Predict Severe COVID-19 Outcomes

[Read More >>](#)

YCC Team Challenge Awards

The Yale Cancer Center Team Challenge Awards support multi-project, multi-investigator research proposals that revolve around a central theme. A goal of this internal grant program is to develop new, or enhance existing, working groups by providing support for research that will lay the foundation for cancer-related, collaborative, external P or U-type grant applications.

The formation of new teams is encouraged. We are offering administrative support for new or existing focus groups or "think tanks" now to facilitate meetings, goal setting and provide project management to help teams coordinate their efforts towards Team Challenge Award or other grant applications. We will assist focus groups in engaging various Research Program Leaders, to align objectives with Research Program strategic goals.

If you would like assistance in coordinating a working group for the Team Challenge Award, please contact [Dr. Gary Hunnicutt](#) in our Office of Research Affairs to initiate discussions and planning. LOI Submission deadline is October 1.

[Learn More >>](#)

Notables

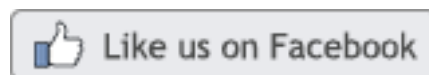
Marianne Davies, DNP, ACNP, AOCNP, has been named a **Fellow of The American Academy of Nursing**. 230 nurse leaders have been selected to join the prestigious 2020 Fellow Class, which will be recognized during the Academy's annual conference in October.



[In Vermont, Closer To Free Ride Is Close to Home](#)
[Read More >>](#)



Join Smilow Cancer Hospital on Facebook



Latest Posts:

A true #SmilowStar, Mario Lupone, RN, a nurse on NP 12 always has a smile on his face, and is fully-committed to his patients and supporting their families and caregivers. Mario helps promote a culture of caring, engagement, and support among all members of the Smilow team. He consistently demonstrates hard work, honesty, accountability, and care of the whole patient. Most of all, Mario clearly finds meaning and joy in the important work he does, and it shows with each and every interaction with patients and staff!

Mario recently completed his BSN degree, while working full time at Smilow, and caring for young children along with his wife, Rachel. He's also a dedicated member of Team Live Positive for Closer to Free, currently participating in his 7th year! Mario will soon move to a new position at Smilow to care for patients in the Phase I Unit, and will be an incredible asset to that team as well. Our inpatient team looks forward to continuing to cross paths with Mario at Smilow and are grateful for his dedication and service to our medical oncology patients on NP 12 over the years.

Mandar Muzumdar, MD, Assistant Professor of Genetics and Medicine (Medical Oncology), and **Siyuan (Steven) Wang, PhD**, Assistant Professor of Genetics and Cell Biology, have been awarded an **R33 grant** from the NCI for \$1.24 million to support their research on multiplexed imaging of chromatin folding and RNA profiles in cancer.

Vish Muthusamy, PhD, Research Scientist and Executive Director of the Center for Precision Cancer Modeling, **Marcus Bosenberg, MD, PhD**, Professor of Dermatology, Pathology, and Immunobiology; and **Katerina Politi, PhD**, Associate Professor of Pathology, have been awarded **AstraZeneca Sponsored Research Agreement** to support their project, "Investigating the anti-tumor activity of miL-12 mRNA in B2M deficient syngeneic mouse tumor models." The amount of award is \$667,874.

CureSearch for Children's Cancer, in partnership with the SebastianStrong Foundation, has awarded a \$225,000 **Young Investigator Grant** to Yale Cancer Center's **Dr. Ranjith Menon Muraleedharan**, who will develop a new treatment approach for diffuse intrinsic pontine glioma (DIPG). Dr. Muraleedharan's mentor is **Dr. Ranjit Bindra**, Professor of Therapeutic Radiology.

Meaghan McGeary, a graduate student in the lab of **Marcus Bosenberg, MD, PhD**, Professor of Dermatology, Pathology, and Immunobiology, has been awarded a F99/K00 Predoctoral to Postdoctoral Award from the NCI to fund 2 years of laboratory research and 4 years of postdoc research to continue her cancer research efforts.



[Read More >>](#)

The 2020 Blavatnik Award recipients were recently announced by the Office of Cooperative Research (OCR) at Yale University. The awards are made possible by a generous grant from the Blavatnik Family Foundation, and we are pleased to share the awardees from Yale Cancer Center.



[Read More >>](#)

Tune in to Yale Cancer Answers on Connecticut Public Radio to listen to Dr. Akiko Iwasaki discuss her latest research into the potential differences in response to COVID-19 between men and women, and

The **Smilow Cancer Hospital Care Center in Greenwich** recently welcomed **Stephanie Paine, APRN**, to their team.

Employee Profile: Christine Marien

As Senior Administrative Assistant within the Department of Neuro-Oncology,



Christine Marien supports the day-to-day needs for a team of five physicians in a department rich with big ideas and a vision for the future.

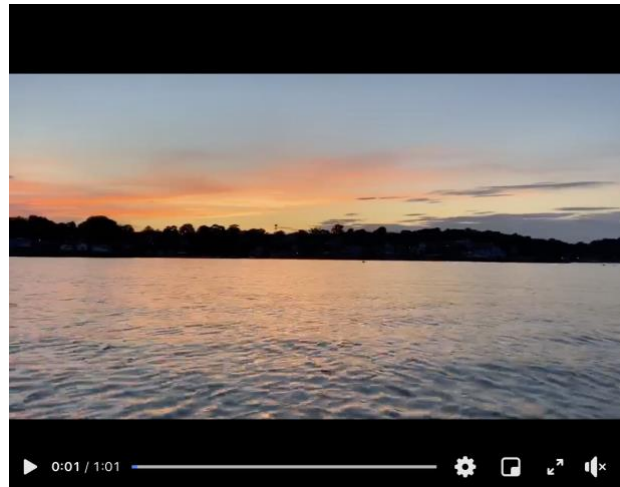
"It feels remarkable to be a part of such a bright vision for the future," said Christine. "Great things are happening; Big ideas like the Brain Tumor Center are coming to fruition. And I work with a

her research on the immune responses of patients with cancer and COVID-19.



[Read More >>](#)

Take a deep breath, reflect, and enjoy this sunset scene from our Integrative Medicine Program over the Long Island Sound.



[Watch Now >>](#)

Today we recognize the tremendous dedication of Dennis Lloyd and Cesar Vazquez, our teammates from Environmental Services on NP 12. Dennis and Cesar provide exceptional service and go above and beyond to

wonderful and supportive team who could not be more fantastic."

For the last seven years, Christine has served as the academic secretary and Neuro-Oncology Fellowship Coordinator, and she has seen her team grow from two faculty to five. Even with the shift in workflow as a result of COVID-19, she remains on top of the increase in Zoom scheduling and shift away from conference and seminar travel.

Professor of Neurology, Chief of Neuro-Oncology, and Clinical Program Leader of the Brain Tumor Center, Antonio Omuro, MD, says, "Christine is great at anticipating problems and keeping her eyes open to opportunities to improve things. She understands the needs of others and always brings up issues that require our attention."

Recent Publications

Gross, C. P., Essien, U. R., Pasha, S., Gross, J. R., Wang, S. Y., & Nunez-Smith, M. (2020). **Racial and Ethnic Disparities in Population-Level Covid-19 Mortality.** *Journal of general internal medicine*, 10.1007/s11606-020-06081-w. Advance online publication.
[Read More >>](#)

Lin, M., Zhang, Q., Song, Y., Yu, X., Ouyang, H., Xie, L., & Shang, Y. (2020). **Differentiation of endometrial adenocarcinoma from adenocarcinoma of cervix using kinetic parameters derived from DCE-MRI.** *European journal of radiology*, 130, 109190. Advance online publication.
[Read More >>](#)

Torabi, S. J., Bourdillon, A., Salehi, P. P., Kafle, S., Mehra, S., Rahmati, R., & Judson, B. L. (2020).

ensure our patients are taken care of in a clean and safe environment and that our nurses and staff have everything they need on a daily basis. Both Dennis and Cesar joined the EVS team in 2018, and soon transferred to NP 12. Since joining Smilow, both nursing and EVS leadership have received numerous compliments about their courtesy and engagement with our patients. They are an integral part of our NP 12 family and we are so proud to have them on our team. Thank you, Dennis and Cesar, you are both #SmilowStars!



[Read More >>](#)

Join Kaveh Khoshnood, PhD, MPH, from Yale School of Public Health on Yale Cancer Answers on Connecticut Public Radio for a discussion of global cancer care during the #covid19 pandemic.



[Read More >>](#)

The epidemiology, surgical management, and impact of margins in skull and mandibular osseous-site tumors.

Head & neck, 10.1002/hed.26389.

Advance online publication.

[Read More >>](#)

Janardan, S. K., Balsamo, L. M., Ross, W. L., Rotatori, J., Auerbach, C., & Kadan-Lottick, N. S. (2020).

The association of health status and cancer history of young adult survivors of childhood cancer with parental accompaniment to survivorship clinic visits.

Supportive care in cancer : official journal of the Multinational Association of Supportive Care in Cancer, 10.1007/s00520-020-05653-0. Advance online publication.

[Read More >>](#)

Thompson, B., Davidson, E. A., Liu, W., Nebert, D. W., Bruford, E. A., Zhao, H., Dermitzakis, E. T., Thompson, D. C., & Vasiliou, V. (2020).

Overview of PAX gene family: analysis of human tissue-specific variant expression and involvement in human disease.

Human genetics, 10.1007/s00439-020-02212-9. Advance online publication.

[Read More >>](#)

Liu, B., & Goodwin, J. E. (2020).

The Effect of Glucocorticoids on Angiogenesis in the Treatment of Solid Tumors.

Journal of cellular signaling, 1(3), 42-49.

[Read More >>](#)

Cao, Z., Zheng, X., Yang, H., Li, S., Xu, F., Yang, X., & Wang, Y. (2020).

Association of obesity status and metabolic syndrome with site-specific

Did you know that our newest Smilow Cancer Hospital Care Center is in Westerly, RI, bringing National Cancer Institute Cancer Care to residents in Rhode Island?

The Center includes 13 staff members, and two oncology board certified physicians to care for patients in need of cancer care or hematology care, as well as radiation oncology, genetic testing, clinical trials, and on site lab and pharmacy services.

Supportive care clinicians, including an oncology nurse coordinator, social workers, a dietician, clinical research staff, palliative care, and survivorship planning are also available.



[Read More >>](#)

Follow Yale Cancer Center on Twitter

Follow us on **twitter**



We are proud to announce @NIH has awarded a 5-year, T32 grant to @YaleCancer @YaleSPH led by @mirwin_yale and Dr. Xiaomei Ma to fund innovative #cancer prevention and control research training.



Tune in to Yale Cancer Answers today at 7:30pm @wnpr to listen to @VirusesImmunity discuss her latest research into the potential differences in response to #COVID19 between men and women, & her research on the #immune responses of patients with #cancer & COVID-19.

cancers: a population-based cohort study.

British journal of cancer, 10.1038/s41416-020-1012-6. Advance online publication.

[Read More >>](#)

Sisu, C., Muir, P., Frankish, A., Fiddes, I., Diekhans, M., Thybert, D., Odom, D. T., Flicek, P., Keane, T. M., Hubbard, T., Harrow, J., & Gerstein, M. (2020).

Transcriptional activity and strain-specific history of mouse pseudogenes.

Nature communications, 11(1), 3695.

[Read More >>](#)

Zhang, J., Lee, D., Dhiman, V., Jiang, P., Xu, J., McGillivray, P., Yang, H., Liu, J., Meyerson, W., Clarke, D., Gu, M., Li, S., Lou, S., Xu, J., Lochovsky, L., Ung, M., Ma, L., Yu, S., Cao, Q., Harmanci, A., ... Gerstein, M. (2020).

An integrative ENCODE resource for cancer genomics.

Nature communications, 11(1), 3696.

[Read More >>](#)

Kim, P., & Omuro, A. (2020).

Consolidation Therapy in Primary Central Nervous System Lymphoma.

Current treatment options in oncology, 21(9), 74.

[Read More >>](#)

Patel, T. H., & Cecchini, M. (2020).

Targeted Therapies in Advanced Gastric Cancer.

Current treatment options in oncology, 21(9), 70.

[Read More >>](#)

Hsiang, W. R., Gross, C. P., Maroongroge, S., & Forman, H. P. (2020).

Trends in Compensation for Primary Care and Specialist Physicians After Implementation of the Affordable Care Act.

JAMA network open, 3(7), e2011981.

[Read More >>](#)



New findings led by @VirusesImmunity in @nresearch news may help identify people at high risk of severe illness from #Covid19 early in their hospitalization and suggest specific treatments for the virus.



New research in @ASCO_pubs led by @YaleCancer scientists including @cpgyale @KerimAdelsonMD @FauziaRiaz shows adoption of immune #checkpointInhibitor and patterns of care at end of life.



Join Kaveh Khoshnood, PhD, MPH, from @YaleSPH on Yale Cancer Answers at 7:30pm for a discussion of global cancer care during the #covid19 pandemic.



Join @DrRoyHerbstYale who will be co-chairing the 2020 @gotoPER virtual #gotoILCC discussing current research and treatment for #lungcancer.



@RanjitBindra will report in a live Virtual Town Hall starting at 10am today on the latest research and treatment for #Glioblastoma on behalf of the @NBTStweets for #GBMDay.



Research by .@BarbaraBurtness & Dr. Benjamin Judson w/@RobertFerrisMD thru @eaonc in Oral Oncology shows novel process to credential surgeons to perform transoral surgery for #oropharyngealcancerpatients.



Using technology pioneered by .@YaleCancer scientists and @DrMayneFDAFood , new research by Dr. Brenda Cartmel shows #obesity is associated with lower skin carotenoid levels in #breastcancer survivors.



Tune in to Yale Cancer Answers today at 7:30pm @wnpr to hear Dr. Rachel Perry @RachelPerryLab1 discuss her research and insight into the connection between #obesity#insulin and #cancer.

Van Cutsem, E., Tempero, M. A., Sigal, D., Oh, D. Y., Fazio, N., Macarulla, T., Hitre, E., Hammel, P., Hendifar, A. E., Bates, S. E., Li, C. P., Hingorani, S. R., de la Fouchardiere, C., Kasi, A., Heinemann, V., Maraveyas, A., Bahary, N., Layos, L., Sahai, V., Zheng, J. Lacy, ... HALO 109-301 Investigators (2020).

Randomized Phase III Trial of Pegvorhyaluronidase Alfa With Nab-Paclitaxel Plus Gemcitabine for Patients With Hyaluronan-High Metastatic Pancreatic Adenocarcinoma.

Journal of clinical oncology : official journal of the American Society of Clinical Oncology, JCO2000590. Advance online publication.

[Read More >>](#)

Catenacci, D., Kang, Y. K., Park, H., Uronis, H. E., Lee, K. W., Ng, M., Enzinger, P. C., Park, S. H., Gold, P. J., Lacy, J., Hochster, H. S., Oh, S. C., Kim, Y. H., Marrone, K. A., Kelly, R. J., Juergens, R. A., Kim, J. G., Bendell, J. C., Alcindor, T., Sym, S. J., ... CP-MGAH22-5 Study Group (2020).

Margetuximab plus pembrolizumab in patients with previously treated, HER2-positive gastro-oesophageal adenocarcinoma (CP-MGAH22-05): a single-arm, phase 1b-2 trial.

The Lancet. Oncology, S1470-2045(20)30326-0. Advance online publication.

[Read More >>](#)

Funding Opportunities

NIH Support for Conferences and Scientific Meetings (Parent R13)

The purpose of the NIH Research Conference Grant (R13) is to support high quality scientific conferences that are relevant to the NIH's mission and to the public health.



We're proud @theNCIhas awarded a UM1 grant renewal to @YaleCancer for early phase investigator #clinicaltrials led by Dr. Patricia LoRusso for new #cancer therapies thru the Experimental Therapeutics Clinical Trials Network.



Congratulations to Lynn Wilson, MD, MPH @xrtldw winner of the Anthony Edward Kupka '64 Distinguished Alumnus Award @landonschool The award is presented annually to an alumnus who has demonstrated service to Landon, his community, his profession, or his country.



We are excited to announce the appointment of Dr. Marcella Nunez-Smith as @YaleCancer @SmilowCancer Director of the Center for Community Engagement and Health Equity and Chief Health Equity Officer.



Listen at 10:50am to .@SanjayAnejaMD discuss "Applications of Deep Learning in Diagnostic Image Analysis" through @NASEM_Health 's workshop on Digital Health Applications in Oncology.



Fitness expert Shana Schneider will join us on Yale Cancer Answers today at 7:30pm @wnpr to share tips and advice on exercise for cancer survivors during the #Covid_19 pandemic. Tune in this evening, or download our podcast through @iTunes

Calendar

Phone Meditation hosted by Smilow Integrative Medicine

August 7; 1:00 PM

[Learn More >>](#)

Yale Cancer Answers

August 9; 7:30 PM

NPR

Thyroid Nodule Management

Grace Lee, MD

[Learn More >>](#)

Application Deadline: August 12, 2020
[Learn More >>](#)

NCCN Pfizer Axitinib Request for Proposals (RFP)

NCCN and Pfizer are collaborating to offer a new grant opportunity seeking proposals to support NCCN Member Institution faculty utilizing axitinib. The overall aim is to develop innovative trials that will evaluate the role of axitinib in the treatment of melanoma, hepatocellular carcinoma, and colorectal cancer. Application Deadline: August 12, 2020
[Learn More >>](#)

NCI Emergency Administrative Supplements for Research and Training Continuity of Postdoctoral Fellows during COVID-19

Current NCI funded Principal Investigators whose postdoctoral fellows have temporarily lost stipend support from a non-profit funder because of the COVID-19 global pandemic may apply for an administrative supplement to cover the postdoctoral fellow's salary plus applicable F&A for the time and effort devoted to the NCI funded grant
Application Deadline: August 15, 2020
[Learn More >>](#)

JH Milstone Fund Grant

JH Milstone Fund will award a grant in 2020 to support early stage investigators and innovative research and education in thrombosis, thrombolysis and hemostasis.
Letter of Intent Due: August 17, 2020
[Learn More >>](#)

Lasker Clinical Research Scholars Program (Si2/R00)

This FOA encourages applications for the Lasker Clinical Research Scholars Program for the purpose of supporting the

Guided Imagery Meditation with Michele Grand LMT
hosted by Smilow Integrative Medicine
August 10; 10:30 AM
[Learn More >>](#)

Phone Meditation hosted by Smilow Integrative Medicine
August 11; 12:30 PM
[Learn More >>](#)

Zumba Gold hosted by Smilow Integrative Medicine
August 11; 1:00 PM
[Learn More >>](#)

Restorative Yoga with Ellen McNally hosted by Smilow Integrative Medicine
August 11; 3:00 PM
[Learn More >>](#)

Phone Meditation hosted by Phil Levine, Mindfulness Meditation Coach
August 12; 4:00 PM
[Learn More >>](#)

Virtual Gentle Yoga hosted by Smilow Integrative Medicine
August 13; 10:00 AM
[Learn More >>](#)

Pathology Grand Rounds
August 13; 12:30 PM
Autopsy in COVID-19: Histopathological and Viral Tropism Findings
Michael Osborn, MRC, FRCPath & Brian Hanley, MSc
[Learn More >>](#)

Guided Imagery Meditation with Michele Grand LMT
hosted by Smilow Integrative Medicine
August 13; 1:30 PM
[Learn More >>](#)

Phone Meditation hosted by Smilow Integrative Medicine
August 14; 1:00 PM
[Learn More >>](#)

Yale Cancer Answers
August 16; 7:30 PM
NPR
Building a Relationship with your Physician: a patient's perspective
Shantana Maye-Hazel
[Learn More >>](#)

Guided Imagery Meditation with Michele Grand LMT
hosted by Smilow Integrative Medicine
August 17; 10:30 AM
[Learn More >>](#)

research activities during the early stage careers of independent clinical researchers.

Application Deadline: August 28, 2020

[Learn More >>](#)

Community Interventions to Address the Consequences of the COVID-19 Pandemic among Health Disparity and Vulnerable Populations (R01)

This FOA encourages applications to implement and evaluate community interventions testing 1) the impacts of mitigation strategies to prevent COVID-19 transmission in NIH-designated health disparity populations and other vulnerable groups; and 2) already implemented, new, or adapted interventions to address the adverse psychosocial, behavioral, and socioeconomic consequences of the pandemic on the health of these groups.

Application Deadline: August 28, 2020

[Learn More >>](#)

NCCN Pfizer Biosimilars Request for Proposals (RFP)

The intent of this RFP is to encourage NCCN Member Institutions and non-NCCN Member Institutions to submit proposals describing concepts and ideas that develop and validate enduring approaches that improve the safe and efficient adoption of biosimilars in oncology.

Letter of Intent Due: September 9, 2020

[Learn More >>](#)

CRI Irvington Postdoctoral Fellowship Program

This program furthers career development and supports laboratory research for promising young scientists working under the mentorship of leading immunologists.

Application Deadline: October 1, 2020

Virtual T'ai Chi/Qigong hosted by Smilow Integrative Medicine

August 17; 3:00 PM

[Learn More >>](#)

Digestive Diseases Special Seminar

August 17; 5:00 PM

From Nebula to Nexus - Lessons Learned in Team Building

Tamar Taddei, MD

[Learn More >>](#)

Phone Meditation hosted by Smilow Integrative Medicine

August 18; 12:30 PM

[Learn More >>](#)

Zumba Gold hosted by Smilow Integrative Medicine

August 18; 1:00 PM

[Learn More >>](#)

Restorative Yoga with Ellen McNally hosted by Smilow Integrative Medicine

August 18; 3:00 PM

[Learn More >>](#)

Bereavement Seminar

August 18; 5:30 PM

COVID-19: Coping with the Loss of your Loved One

[Learn More >>](#)

Virtual T'ai Chi/Qigong hosted by Smilow Integrative Medicine

August 19; 2:00 PM

[Learn More >>](#)

Phone Meditation hosted by Phil Levine, Mindfulness Meditation Coach

August 19; 4:00 PM

[Learn More >>](#)

Slide Seminar

August 20; 8:30 AM

Painful Lesions of the Skin

Priyadharsini Nagarajan, MD, PhD

[Learn More >>](#)

Virtual Gentle Yoga hosted by Smilow Integrative Medicine

August 20; 10:00 AM

[Learn More >>](#)

Pathology Grand Rounds

August 20; 12:30 PM

Not all Melanomas are Created Equal - Histopathologic Evaluation and Staging of Primary Anogenital Mucosal Melanomas

Priyadharsini Nagarajan, MD, PhD

[Learn More >>](#)

Promoting Research on Music and Health: Phased Innovation Award for Music Interventions (R61/R33 Clinical Trial Optional)

The purpose of this FOA is to promote innovative research on music and health with an emphasis on developing music interventions aimed at understanding their mechanisms of action and clinical applications for the treatment of many diseases, disorders, and conditions.

Application Deadline: October 2, 2020

[Learn More >>](#)

Assay development and screening for discovery of chemical probes, drugs or immunomodulators (R01)

Through this FOA, NCI wishes to stimulate research in discovery and development of novel, small molecules for their potential use in studying disease treatment relevant to the missions of the participating NIH Institutes.

Application Deadline: October 5, 2020

[Learn More >>](#)

Secondary Analysis and Integration of Existing Data to Elucidate the Genetic Architecture of Cancer Risk and Related Outcomes (R01 and R21)

Through these FOAs, the NCI along with the NHGRI and NIDCR encourages submission of applications proposing to conduct secondary data analysis and integration of existing datasets and database resources, with the ultimate aim to elucidate the genetic architecture of cancer risk and related outcomes.

Application Deadlines: October 5, 2020 (R01) and October 16, 2020 (R21)

[Learn More >>](#)

[Learn More >>](#)

Guided Imagery Meditation with Michele Grand LMT hosted by Smilow Integrative Medicine

August 20; 1:30 PM

[Learn More >>](#)

Submissions

Please submit your recent publication and grant announcements to:

Renee Gaudette

Director, Public Affairs and Communications

Aging, Cancer-Initiating Cells, and Cancer Development (U01)

Through this FOA, the NCI and National Institute on Aging will promote research to advance the understanding of the mechanistic factors and cellular interactions during aging that contribute to cancer initiation.

Application Deadline: October 27, 2020

[Learn More >>](#)

Fertility Status as a Marker for Overall Health (R01 and R21)

The purpose of this FOA is to support research that explores the premise that fertility status can be a marker for overall health.

Application Deadline: October 19, 2020

[Learn More >>](#)

NCI Outstanding Investigator Award (R35)

The objective of the NCI OIA is to provide long-term support to accomplished investigators with outstanding records of cancer research productivity who propose to conduct exceptional research.

Application Deadline: November 6, 2020

[Learn More >>](#)

3D Technologies to Accelerate HTAN Atlas Building Efforts (UH2)

Through this FOA, the NCI, as a part of its Beau Biden Cancer Moonshot Initiative, invites submission of applications requesting support for projects that will accelerate cancer research.

Application Deadline: November 9, 2020

[Learn More >>](#)

Alex's Lemonade Stand RUNX1 Early Career Investigator Grant

The RUNX1 Early Career Investigator grant is a 3-year award designed to fund research in strategies leading to the development of therapies to prevent the transition from pre-leukemia to leukemia for patients with RUNX1-FPD.

Application Deadline: December 16, 2020

[Learn More >>](#)