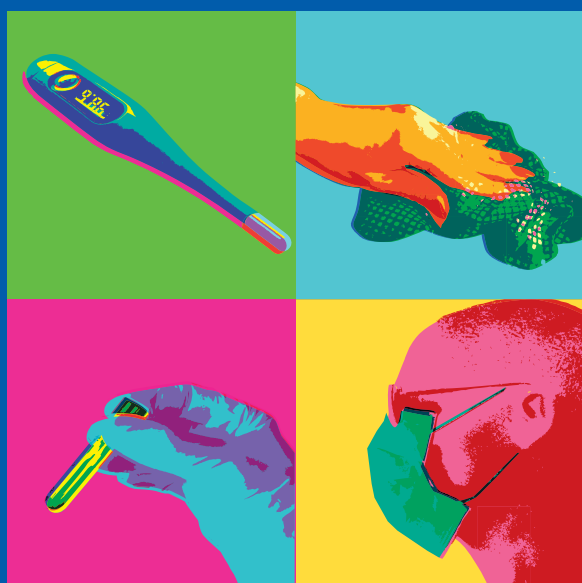


Yale's Clinical Response to COVID-19 Pandemic



Friday, May 1, 2020

1:00—4:00 PM

Virtual Panel Via Zoom

We invite you to join us for the third in our series of virtual Dean's Workshops to share data and work collaboratively in response to the COVID-19 pandemic. Hosted jointly by Yale School of Medicine and Yale New Haven Health, this workshop will focus on innovations in clinical care and highlight elements of the coordinated responses by our medical teams to address the COVID-19 pandemic. As with previous workshops, we will provide an online response thread for your ideas and questions.

Sponsored by the Office of the Dean, Yale School of Medicine in collaboration with YNHHS and Nelson Delgado.

1:00 PM INTRODUCTION

Nancy J. Brown, MD

Jean and David W. Wallace Dean of the Yale School of Medicine and C.N.H. Long Professor of Internal Medicine

1:05 PM COVID-19—NOT JUST A DRILL

Thomas Balczak, MD

Executive Vice President and Chief Clinical Officer, Yale New Haven Health

Michael Holmes, MSA

Senior Vice President, Operations, Yale New Haven Hospital

1:25 PM INNOVATING NURSING SOLUTIONS FOR A NOVEL VIRUS PANDEMIC

Beth P. Beckman, DNSc

Chief Nursing Executive, Yale New Haven Health

1:45 PM OBTAINING PPE FOR OUR FRONTLINE HEROES:

A GLOBAL AND LOCAL JOURNEY

Lisa Lattanza, MD

Chair, Orthopaedics & Rehabilitation; Professor, Orthopaedics & Rehabilitation, Yale School of Medicine; Chief, Orthopedics, Yale New Haven Hospital

2:05 PM CLINICAL COLLABORATION IN RESPONSE TO

THE COVID-19 PANDEMIC

Maricar Malinis, MD

Associate Professor of Medicine, Yale School of Medicine; Medical Director, Transplant Infectious Diseases, Yale New Haven Hospital

5 MINUTE BREAK

2:30 PM FACILITATING CLINICAL RESEARCH AT YALE: "HELP US

DISCOVER" AND YALE CENTER FOR CLINICAL INVESTIGATION

COMBAT THE COVID-19 PANDEMIC

Eric Velazquez, MD

Robert W. Berliner Professor of Medicine (Cardiology); Chief, Cardiovascular Medicine; Chief, Cardiovascular Medicine, Yale New Haven Hospital; Physician-in-Chief, Heart and Vascular Center, Yale New Haven Health

2:55 PM TREATING SEVERE COVID-19 WITH CONVALESCENT PLASMA

Mahalia S. Desruisseaux, MD

Associate Professor of Internal Medicine (Infectious Diseases)

3:15 PM SARS-COV-2 SEROLOGY IN YALE-YNHHS HEALTH CARE WORKERS

AND OTHER HIGH-RISK PERSONNEL

Carrie Redlich, MD, MPH

Professor of Medicine (Occupational Medicine) and of Environmental Health Sciences; Director, Occupational and Environmental Medicine Program

3:35 PM INSIGHTS FROM THE FRONT: THE CHALLENGES OF NEWLY FORMED

TEAMS IN COVID-19 UNITS

Amy Wrzesniewski, PhD

Michael H. Jordan Professor of Management, Yale School of Management

3:55 PM CLOSING REMARKS AND FUTURE DIRECTIONS

Marna P. Borgstrom

Nancy J. Brown, MD

Yale SCHOOL OF MEDICINE

Yale
NewHaven
Health