

**Yale Trainees' Global Health
Experiences:
Implications for Career-Building**

13 March 2023

Yale SCHOOL OF MEDICINE

Office of Global Health Leadership Team



Tracy Rabin, MD, SM



Sheela Shenoi, MD, MPH



Laura Crawford

Faculty Co-Directors

Global Health Capacity Building Fellowship: Experiences in a New Training Program

Dr. Amed Logrono MD

March 13st 2023

Yale SCHOOL OF MEDICINE

Fellowship Mission

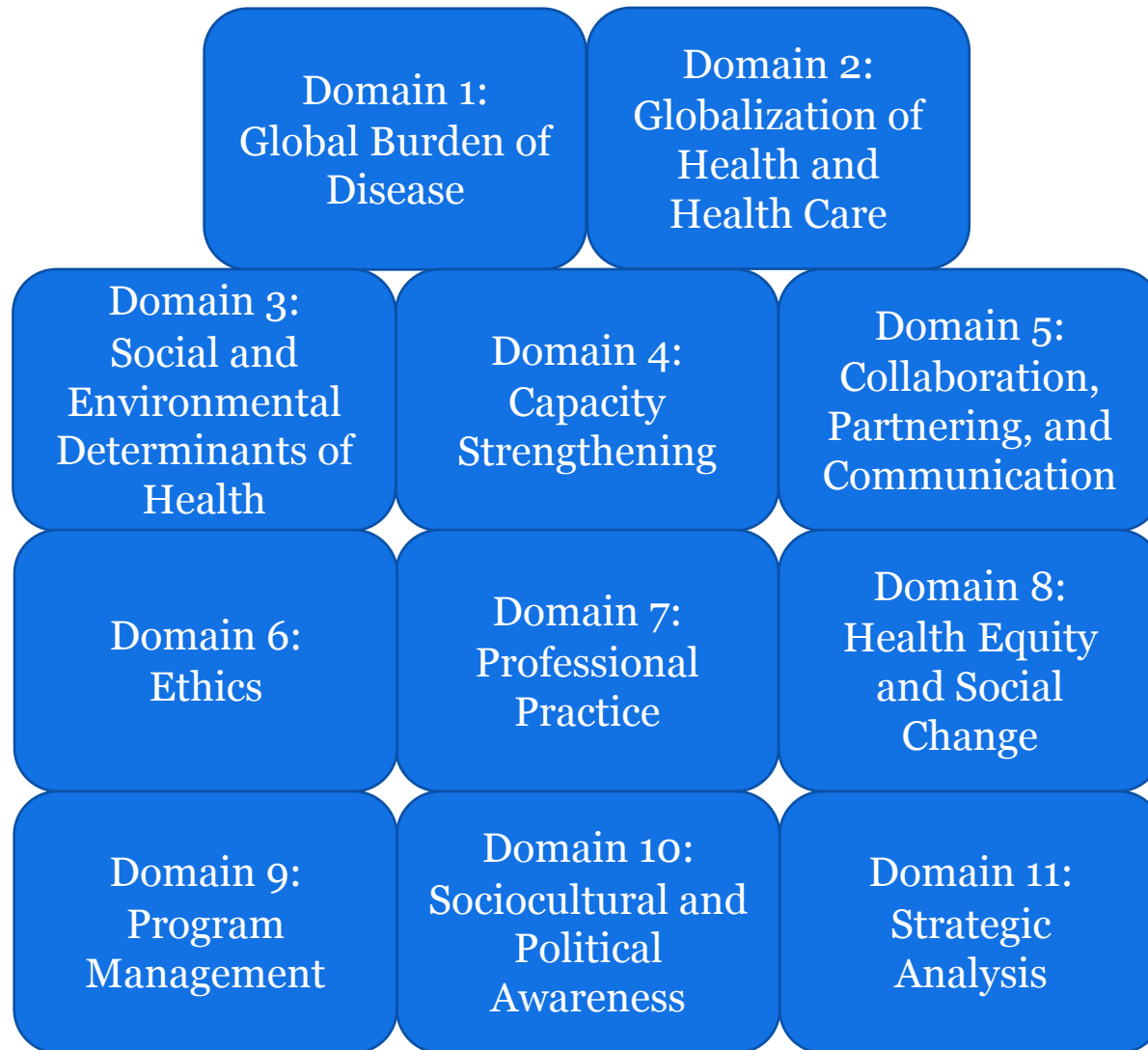
To prepare graduates for a career in global health by:

- Developing an understanding of the theory and existing best practices related to global health education capacity building collaborations
- Providing opportunities for immersion into existing domestic and international Yale global health partnerships, with the goal of supporting and enhancing those collaborations
- Working clinically with vulnerable patients in New Haven
- Developing global health teaching and scholarship skills under OGH faculty umbrella

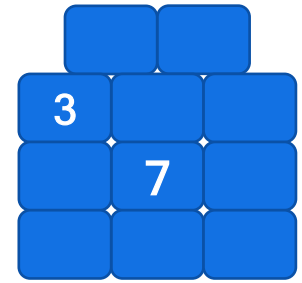
Putting the Fellowship Together

- Duration → 1 year Fellowship
 - 6 months in New Haven, CT (YNHH/NEMG)
 - 6 months at partner site Universidad De Valle, Cali, Colombia
- Funding
- Graduate Medical Education Approval
- Section of General Internal Medicine Approval
- Credentialing

CUGH Global Health Competency Domains



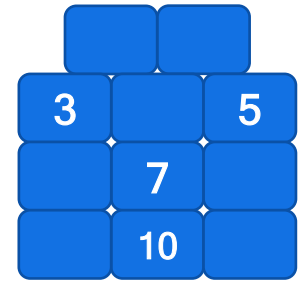
Inpatient Clinical Experience



Hospitalist Medicine at Yale New Haven Hospital

- Independent Clinical Practice as Nocturnist
- General Medical Floor, Step Down Unit
 - Acute Care/Triage Medicine
- Experience in COVID19 Wards
 - Resident → Attending

Outpatient Clinical Experience



New Haven Primary Care Consortium

- Preceptor in weekly Resident Refugee Clinic
- Initial Point of Care for Newly Arrived Refugees
- August 2021 → Responding to increase in refugee arrivals from Operation Allies Refuge
- Collaborating with local resettlement agency, health care institutions, and providers to improve access to:
 - Dental Services
 - Transportation
 - Continuity to Primary Care

Teaching Experiences



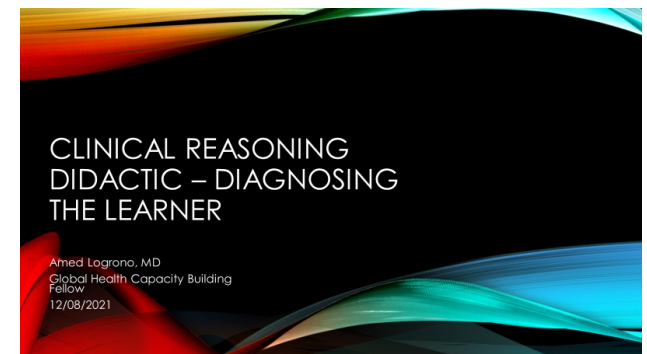
1. Point of Care Ultrasound (POCUS) Curriculum

- Medical Students
- Interns/Residents
- Clinical Elective

2. Independent Ultrasound Mentorship

3. Musculoskeletal Curriculum

4. Clinical Reasoning Elective



Local Curriculum Planning

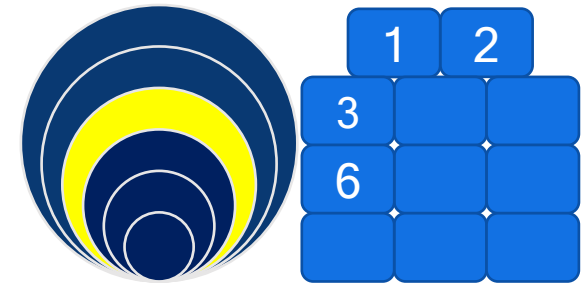
Global Health Equity and Distinction Pathway

- Office of Global Health, Internal Medicine
- Reviewing resident log and survey data to identify curricular gaps
 - Global Health Ethics Seminar Series 2020-21

Global Health Night Out

- Quarterly Sessions for Yale Global Health Community
 - September 2020: COVID19 in Latin America
 - February 2021: Youth Homelessness
 - March 2021: Addiction & Global Health
 - Sept 2021: Rheumatic Heart Disease
 - December 2021: HIV & Long Acting Antiretrovirals
 - February 2022: Climate Change and CKD

Yale Office Based Medicine Curriculum Chapter – Refugee Health



GLOBAL HEALTH NIGHT

Climate Change

Date: Thursday, February 11th
Time: 7:00-8:30pm
Sponsored by the YSM

Join us for a lively discussion on the development of chronic

GLOBAL HEALTH NIGHT

World AIDS Day

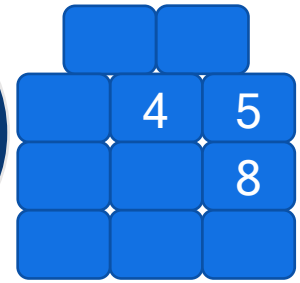
ENDING THE HIV EPIDEMIC

Announcing the second 2021-2022 *Global Health Night Out*
Long Acting Injectable ARVs: Ensuring Equitable Access
(Will need a zoom link)

Date: Thursday, December 9th
Time: 6:45-8:15pm
Sponsored by the YSM Office of Global Health Education

Join us for a lively discussion on the impact of new long-acting injectable ARV therapies on the treatment of HIV/AIDS as well as consideration to ensure fair and equitable access.

Advocacy/Community Engagement



COVID19 Vaccine Clinics

- Vaccinating at YNHH Clinics
- Satellite Clinics in Under-Resourced Areas

Community Management Team Meetings

- Reviewing vaccine essentials with community leaders
- COVID19 vaccine Q&A with community members

Community Healthcare Worker Training w/Community Alliance for Research and Engagement



NEW HAVEN INDEPENDENT

Valley Independent Sentinel La Voz Hispana WNHH FM

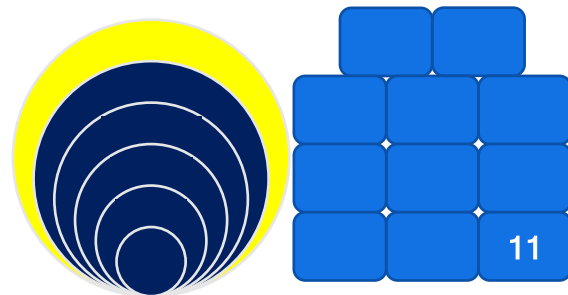
YNHH Docs Update Neighbors On Vaccines; J&J On Hold For now

by MAYA MCFADDEN | Apr 14, 2021 10:01 am

[Post a Comment](#) | [E-mail the Author](#)

Posted to: [Covid-19](#), [The Hill](#), [Health](#), [Community Management Teams](#)

National Curriculum Building



CUGH GME Working Group

- To create a basic curriculum for GME programs covering fundamental topics in global health, drawing from the CUGH Competencies Subcommittee among other sources.
- Multidisciplinary Working Group
- Surveying medical education community for feedback

Collaboration with Partner Site

Findings from Initial Discussions

- Interest in Collaboration
- Desire to Establish Bilateral Partnership
- Potential Needs Assessment

Challenges to Collaboration

- COVID19 Pandemic → Traveling Challenges
- Communication Barriers



Reflections/Lessons

- Exposure to teaching opportunities in topics of interest
- Growth in clinical abilities/independence
- Exposure to breadth of Global Health Medical Education
- Responding to Local Needs
 - COVID Vaccination and Community Efforts
 - Refugee Clinic Involvement

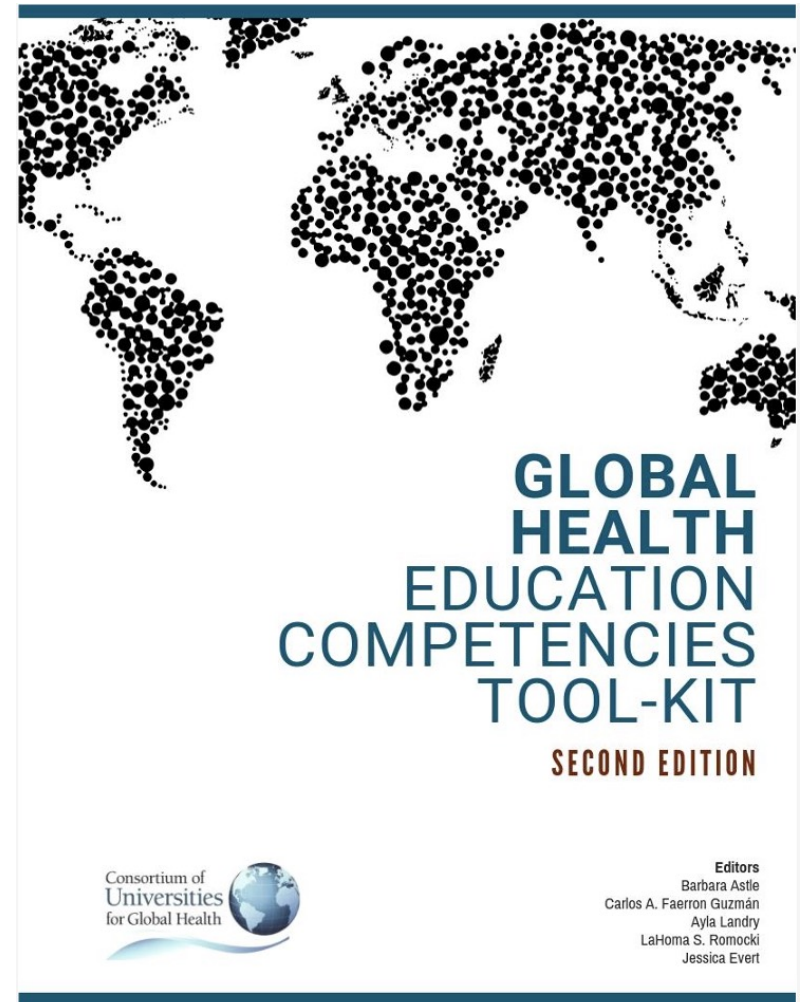
Currently...

Instructor in General Medicine with
Yale Primary Care Program

Affiliate Faculty with the Office of
Global Health

Preceptor in Yale Resident Refugee
Clinic

Member of the CUGH Competency
Subcommittee 2022-24



Acknowledgements

- Dr. Tracy Rabin
- Dr. Aniyizhai Annamalai
- Ms. Laura Crawford
- Dr. Joseph Donroe
- Dr. Steve Holt
- Dr. Stephen Huot
- Dr. Hani Mowafi
- Dr. Sharon Ostfeld-Johns
- Dr. Deborah Proctor
- Dr. Sheela Sheno
- Department of Hospitalist Medicine/New England Medical Group
- Integrated Refugee and Immigration Services (IRIS)
- Yale New Haven Health Office of Graduate Medical Education

Thank you!

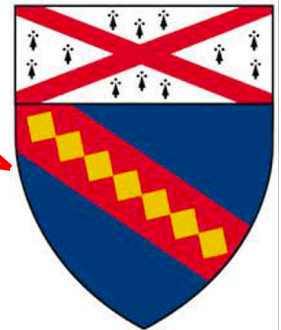
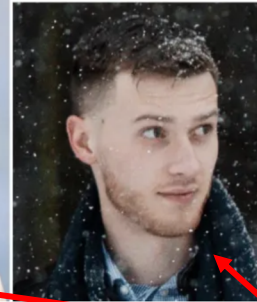
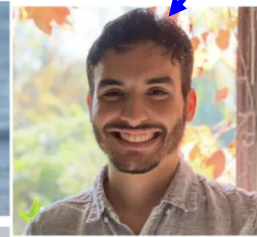
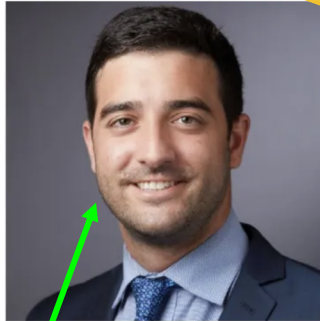
Yale Institute of Global Health

Leadership in Global Health Fellowship



Tim DeVita, MD (YPC HIVTT - PGY3)

Yale Institute for Global Health





WORLD BANK GROUP



Save the Children®



HQ (1)



Executive Board (36)

Regional Offices (7)

S. N	REGIONAL OFFICES	COUNTRIES
1	Latin America and Caribbean	Panama city, Panama
2	Europe and Central Asia	Geneva , Switzerland
3	East Asia and the Pacific	Bangkok, Thailand
4	Eastern and Southern Africa	Nairobi , Kenya
5	Middle East and North Africa	Amman, Jordan
6	South Asia	Kathmandu , Nepal
7	West and Central Africa	Senegal



Member States (190)

13,000 Employees

Country Offices (150)

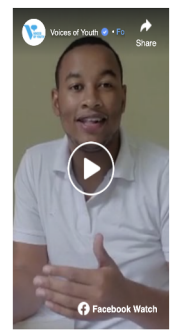


HEALTH

Let's Talk About Eating



REAL LIFE, REAL TALK



Growing up 2030 in a digital world

About Us Report #Youth4Health Futures Policy and Research Convenings Resources Imagining Health Futures

Imagining Health Futures

Imagining Health Futures leverages foresight, storytelling, and youth imagination in a collection of fictional short stories that reveal young peoples' collective hopes, fears, challenges, wants, needs, and imagined solutions for health futures in a digital world.

unicef for every child

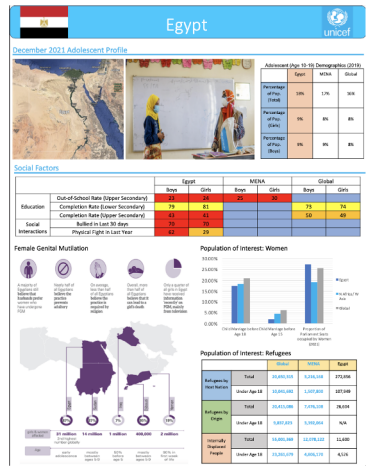
March 2023

unicef for every child

Focusing Care for Those Most Vulnerable: Maternal, Newborn and Child Health in the Middle East & North African Region

An investment opportunity for the private and public sectors

"Hey everyone, it's me, Vinicius from Brazil! My friends and I are going to tell you how we stay active throughout our day!"



Middle East North Africa Regional Profile on Adolescent Health and Wellbeing

unicef for every child

Samuel Choi, MD. Current role

Yale Primary Care
residency program
(‘21)



Primary Care



Homeless
outreach:
2 sessions/wk

How I got here

My roots/my parents

- 2nd generation Korean American
- Benefactor of safety net services
 - Axis community health
 - Asian Health Services in SF
- Parents occupation
 - Pastor of a small community church comprised of immigrant families
 - Community oriented
 - Help people heal and be empowered so they can help themselves and others around them
 - Helped me be mindful of my community today, wherever I am
- Family member with lived experience of homelessness - LION -
- Helped develop the framework for how I would pursue advocacy. To empower others so that they can help themselves and others around them





How I got here

- Undergrad-> worked with my local and international community.
 - Local: Westwood Village
 - International: Project Nicaragua
 - Scholarship program
- Medical school
 - Cook county hospital. Emergency med and internal medicine
 - Solidified my specialty in internal medicine/primary care.
 - Brought me to YPC
- Residency
 - Outreach with homeless department at CSHH
 - Interviewed several clinics -> found CSHH to be the best fit
 - Negotiated my contract to include time with the homeless department
 - Connected with the Raymond Wong Scholarship -> community based participatory research
 - Partnership approach with the community and stake holders while developing an intervention and measuring its outcome

Raymond Wong Scholarship

My role: Be an accessible community provider for our houseless patients at drop-in centers

Goal: Improve post-ED/hospitalization follow up

Outcomes:

- Will measure the impact on ED recidivism and rehospitalization rates
- Will measure the quality of the intervention from the perspective of the users



Thank you for your time

Any questions?