



**YALE PATHOLOGY LABS
2024 CALENDAR**

Letter from the Chair



Yale Pathology Labs is pleased to share our 2024 calendar with you. The mission of Yale Pathology has always revolved around innovation, collaboration, and outstanding patient care. With robust research, teaching programs, and exceptional clinical patient care, we diligently pursue our goal of bringing new knowledge and innovative diagnostic and therapeutic approaches to medicine.

Although the pandemic was declared over, we continue to offer COVID-19 testing and services to our local communities and other healthcare facilities throughout Connecticut and beyond. Our COVID-19 testing revolves around the innovative SalivaDirect™ test developed in our Molecular Diagnostics Lab in collaboration with scientists in the Yale School of Public Health. We also established whole genome sequencing testing for SARS-CoV2 using either nasal swabs or saliva samples. Throughout the pandemic, Yale Pathology Labs (YPL) has led efforts in the region to track COVID-19 and its variants.

In 2023, YPL, in conjunction with Yale School of Public Health, launched a mobile testing van or mobile lab that enables us to bring our high-quality diagnostics and patient-care services to vulnerable populations in five Connecticut counties.

Our clinical practice thrived in 2023 with the support of our Reference Services team. After we introduced new molecular and genomic testing services, we continue to expand our client base to more physicians in the Northeast Medical Group and beyond and grow our national and international reference work, as well.

Our YPL Reference Services team is working with David Rimm, MD, PhD, Anthony N. Brady Professor of Pathology and Professor of Medicine (Medical Oncology), to market a quantitative assay newly developed at Yale that measures with increased accuracy the amount of HER2 protein in patients with breast cancer. This new assay is providing quantitative data, allowing for increased accuracy in treatment planning.

In addition to our well-established Molecular Diagnostics and Tumor Genotyping evaluations, which use next generation sequencing (NGS)-based assays to guide therapeutic decisions in many solid tumors, we also have our NGS panel for the targeted evaluation of borderline thyroid lesions (ThyroSureNGS®). This test complements our cytologic evaluation of fine needle aspirates (FNA) and allows physicians to select the correct therapy more decisively for patients with thyroid neoplasms. Our gynecologic pathology team offers expert molecular genotyping test for molar gestations.

We continue to provide FDA-approved PDL-1 testing, a key diagnostic for personalizing immunotherapy for patients diagnosed with cancer, and continue to refine and expand this capability as it is applied to a wider variety of tumors. We have also expanded our evaluation methodologies for the detection of microsatellite instability (MSI) to a wide array of tumors found well beyond those of the gastrointestinal tract. This testing allows physicians to select additional and often more effective therapies for their patients. And along with Yale Medicine and Yale New Haven Health, we continue to refine the reporting options for pathology and laboratory results within the Epic® electronic medical record. Clients using Epic® can

receive their Pathology reports through this pathway as well as through RELAY, our own web-based office-reporting tool.

These advances and a robust clinical focus on quality and patient safety carry on our long Yale tradition of introducing leading technologies and scientific discoveries to benefit patient care. Yale Pathology has many “firsts” to its credit. Yale’s exceptional diagnostic programs offer patients the most accurate, advanced, safest, and most cost-effective pathology and laboratory evaluations available. We make these easily accessible to all physicians and patients. Our pathologists continue to thrive at the intersection of basic science and clinical care. We are making exciting discoveries on cancer biology, epigenetics, computational pathology, digital pathology, and biology/pathology of aging.

Also in 2023, our pathologists continued to contribute to medical research as well as the national conversation on healthcare. We also acquired a new electron microscope in the Renal Pathology and Electron Microscopy Laboratory that will allow Yale pathologists to maintain their high level of accuracy in diagnosing kidney diseases. And we continued the expansion of digital pathology and digitizing of slides under the direction of Sudhir Perincheri, MD, PhD, Assistant Professor of Pathology and Director of Digital Pathology.

Our department saw some changes in 2023 with new faculty members coming on board. We also had some leadership changes as Angelique Levi, MD, Associate Professor of Pathology, was appointed Vice Chair of Operations and CLIA Laboratory Medical Director while maintaining her existing leadership roles as Vice Chair and Director of the Pathology Reference Services Program. Also, Xuchen Zhang, MD, PhD, Professor of Pathology, was appointed Director of Gastrointestinal Pathology, and Mina L. Xu, MD, Professor of Pathology and Laboratory Medicine, was named Founding Director of the new Expert Consultation Practice for Yale Pathology. In this role, Dr. Xu leads the clinical consultation practice of Pathology, as well as restructure the expert consultation faculty practice.

The importance of the work being done at Yale Pathology cannot be overstated. Our consultative practices are available to all regardless of location through our robust reference program that is specifically designed to serve physicians in their offices. Details of how to access the services of Yale Pathology Labs are presented herein.

Sincerely,

Chen Liu, MD, PhD

Anthony N. Brady Professor of Pathology
Chair, Department of Pathology
Yale School of Medicine
Chief of Pathology, Yale New Haven Hospital

Yale SCHOOL OF MEDICINE
Department of Pathology

Reference Services



Yale Pathology Labs understand that test results are integral to the daily routine of your practice. From diagnosing patients to selecting treatments, your lab service affects every patient. When you choose Yale Pathology Labs as your service provider, you choose the latest technology, outstanding customer service, and a team of premier pathologists.

Reference customer service representatives are available between 8 am and 5 pm EST, Monday through Friday. Our knowledgeable and efficient staff is ready to assist with questions about ordering, billing, shipping, and reports. Our service team will thoroughly address your needs, concerns, or questions and can be reached at **877-YALE LAB (877-925-3522)** and by email at yalepathologylabs@yale.edu.

FINAL REPORTS

For most locations, patient final reports are delivered to your practice by our courier, Lab Logistics. Patient reports are also available for physicians to access immediately via the Yale New Haven Health System **Epic**® interface or through our secure web-based software solution, **RELAY** (Remote Electronic Labs at Yale). For information about access to **RELAY**, please contact our customer service team.

FOLLOW-UP SERVICES AVAILABLE FROM OUR CYTOLOGY LABORATORY

- Annual patient reminder letters
- 6-month no follow-up reminders
- Normal Pap result letters
- Monthly reports customized to the needs of your practice

PARTICIPATION IN MANAGED CARE PLANS

Yale Pathology Labs accept most health insurance plans. For a complete list of managed care health plans in which we participate, please visit Yale Medicine's website at www.yalemedicine.org/patient-tools/insurance.

BILLING

Yale Pathology Labs will bill the insurance company or financially responsible party directly, per the requisition form that accompanies each specimen submitted to our lab. Please note that patients are responsible for any co-payments, deductibles, or co-insurance under their plan.

TRANSPORT FOR SPECIMENS

In our primary service area, Lab Logistics is our dedicated courier service for all routine or STAT laboratory specimen pick-ups. Lab Logistics also handles supply orders and deliveries. Please contact them directly for a specimen pick-up and for supplies, at: **Tel: 833-215-7628 Fax: 888-370-5356**

If you are outside of our courier service area, whether in-state, nationally, or globally, your practice can submit specimens through our pre-paid FedEx service. Contact customer service for more information.

Consultation Services



EXPERT CONSULTATION PRACTICE

Yale Pathology Labs strive to provide both prompt and timely diagnoses and specialized studies applicable to specific diseases through our new Expert Consultation Practice. The expertise of our pathology subspecialists and the diversity of surgical specimens submitted for evaluation also provide an excellent environment for research and training. Consultations and requests for second opinions are welcome.

Patients or physicians seeking to have pathology slides sent to Yale Pathology for an upcoming appointment or for a second opinion should send slides along with the final report to:

Yale Surgical Pathology
Medical School Receiving
200 South Frontage Road
YNHH EP2-631
New Haven, CT 06520

Please contact our service team at **877-YALE LAB (877-925-3522)** for detailed information about how to send specimens and other material necessary for consultation on an individual patient's case.

QUALITY ASSURANCE INITIATIVE

Yale Pathology Labs provide quality patient care in an effective, efficient, and timely manner. We maintain extensive quality assurance and improvement programs consisting of a formal, multifaceted, and systematic approach for measuring and enhancing patient safety and improving the nature of patient care. In addition to satisfying all accreditation and licensing requirements, our quality assurance programs go well beyond the minimum as a leader in quality improvement (QI) and quality monitoring methodologies.

Yale Pathology Labs



Angelique W. Levi, MD
*Vice Chair, Clinical Operations
& Reference Services*
angelique.levi@yale.edu



Kevin Schofield, BS, CT(ASCP)
*Director, Reference Services
Clinical Operations*
kevin.schofield@yale.edu



Stephanie Weirsman
*Director, Reference Services
Business Development*
stephanie.weirsman@yale.edu

SERVING CUSTOMERS LOCALLY, NATIONALLY AND GLOBALLY

BRIDGEPORT / MILFORD FACULTY

Paul Jay Cohen, MD, Associate Professor of Clinical Pathology
*Chair, Bridgeport Hospital Pathology
Site Director, Yale Pathology Residency Program at Bridgeport Hospital*

William B. Laskin, MD, Professor of Clinical Pathology,
Director, Bone and Soft Tissue Pathology

Christine Minerowicz, MD, Assistant Professor of Pathology
Milford Director, Blood Drive Director

Harold Sanchez, MD, Assistant Professor of Pathology, Medical Director -
Bridgeport Hospital, Pathology; Medical Director - Milford Campus, Pathology

Tong Sun, MD, PhD, Assistant Professor of Pathology

Yuanxin Liang, MD, PhD, Assistant Professor of Pathology

Robert Homer, MD, PhD, Professor of Pathology

Haiying Zhan, MD, PhD, Assistant Professor of Pathology

Sumi Thomas, MBBS, Assistant Professor of Pathology

SAINT RAPHAEL CAMPUS FACULTY

Mingfu Yu, MD, MS
Assistant Professor of Pathology

QDAP CAP/CLIA Laboratory

The Yale QDAP (Quantitative Diagnostics in Anatomic Pathology) Laboratory is a CAP/CLIA-certified laboratory that represents next generation immunohistochemistry.

Pathology has long provided quantitative data in Laboratory Medicine or Clinical Pathology labs where Hematology and Chemistry values are provided to clinicians in mg/dl or similar quantitative values expressed as a concentration with a standardized value and range. However, Anatomic Pathology has historically provided only subjective readings due to the technical challenges of measuring protein concentrations within tissue sections.

Modern technology and computational power have allowed for fully quantitative, standardized measurement of biomarker expression in tissue expressed in attomole/mm²

The QDAP laboratory now offers a High Sensitivity (HS) HER2 assay validated for HER2 expression in breast cancer. Assays for TROP2, PD-L1, HER3 and CD8 are expected to be validated over the next year.

OUR TEAM

David Rimm, MD, PhD, Director, QDAP
Nay Nwe Nyein Chan, PhD, Technical Director
Liam Scott, Technical Assistant
Julia Benanto, Technical Assistant

Yale Autopsy Service

The Yale Autopsy Service performs autopsies seven days a week for the York Street Campus, Saint Raphael Campus, Bridgeport Hospital, and the West Haven VA Hospital. Autopsies on patients from the Yale system are usually performed at no cost to the family. The autopsy service is involved in the Pathology Department's educational, quality assurance, and teaching missions, and we collaborate with researchers through the Yale Legacy Tissue Donation Program and multiple tissue banks. We also provide morgue services for all patients who pass away at Yale New Haven Hospital. The morgue is responsible for processing paperwork for all deceased patients including death certificates and autopsy consents.

OUR TEAM

Harry Sanchez, MD, Director
Raffaella Morotti, MD, Associate Director
Amanda Masters, MHS, PA (ASCP), Autopsy and Morgue Manager

Molecular Diagnostic Pathology



Advances in molecular and cell biology have provided us with a profound understanding of the mechanisms of disease at the molecular and genetic levels. Such understanding has been successfully translated into clinical diagnostic, prognostic, and therapeutic applications in modern medicine. Molecular genetic alterations not only provide a signature for the presence of a disease but may also provide essential biomarkers for therapeutic drugs targeting the specific abnormal gene products or their altered functional aspects. In recent decades, the role of diagnostic pathology has expanded from mere morphologic evaluation into comprehensive multifaceted analysis through combined histological, immunohistochemical and molecular evaluations. Yale Pathology's program in Molecular Diagnostics is constantly translating new discoveries and novel technologies into relevant clinical tests that provide either molecular fingerprint of the diseases or precise prediction for the response to targeted therapies. The molecular diagnostics laboratory performs a wide range of molecular tests on routine pathology specimens, including hotspot mutation analyses, microsatellite instability testing, STR genotyping and fluorescent in situ hybridization for detection of a wide range of chromosomal translocations and gene amplifications that occur in various cancers. In recent years, our molecular pathologists direct the comprehensive, next-generation sequencing analysis of solid tumors and provide clinically relevant interpretations to assist in the critical oncological care of patients at Smilow Cancer Hospital.

Clinical Tests Provided by Molecular Diagnostics Lab

Diagnostic PCR Tests

BRAF mutation
FOXL2 mutation
KRAS mutation
T and B cell rearrangement
STR DNA genotyping (gestational trophoblastic disease and tissue identity testing)
MLH1 promoter methylation
MSI analysis
Mycobacterium Tuberculosis

PCR Based Companion Diagnostic Tests

BRAF mutation
KRAS mutation
KIT(c-kit) mutation
MGMT promoter methylation



Left: The new mobile Laboratory-in-a-Van that Yale Pathology Labs uses to bring our testing services to underserved Connecticut communities.

Below: Members of the YPL Reference Services team at a community event in West Haven in Summer 2024.



Diagnostic FISH tests

BCL2, BCL1, BCL6 rearrangement (lymphomas)
EWS rearrangement (soft tissue tumors)
SYT rearrangement (synovial sarcoma)
TFE3 rearrangement of renal tumors
UroVysion (urothelial carcinoma)
MYC rearrangement (lymphomas)
MDM2 amplification (liposarcomas)
Chromosome 1p/191 deletion (oligodendroglioma)
CDNK2A (mesothelioma)

FISH Companion Diagnostic Tests

EGFR gene amplification
HER2 amplification
ALK rearrangement
ROS rearrangement
MET amplification

Next-generation Sequencing Tests

Yale ThyroSure NGS Analysis (thyroid FNA specimen)
ArcherDx Fusion Gene Panel (various solid tumors and lymphomas)
- Recently validated

OUR TEAM

Pei Hui, MD, PhD, Director
Sanja Dacic, MD, PhD
Mohamed Kahila, MBCh

Clinical Faculty



Rita Abi Raad, MD, Assistant Professor of Pathology; Associate Residency Program Director, Pathology. Clinical interests: cytopathology, gynecologic pathology.



Jocelyn Chandler, MD, Assistant Professor of Pathology. Clinical interests: cytopathology, hematopathology.



Peter Gershkovich, MD, MHA, Associate Professor of Clinical Pathology; Director, Section of Pathology Informatics and Cancer Data Science, Pathology. Clinical interests: clinical systems engineering, information visualization, DNA sequencing analysis, NLP full-text search of clinical data.



Dhanpat Jain, MD, Professor of Pathology and of Medicine (Digestive Diseases). Clinical interests: gastrointestinal and liver pathology, including liver tumors, gastrointestinal stromal tumors, prostate cancer risk and mortality, motility disorders of the bowel.



Adebowale Adeniran, MD, Professor of Pathology; Director of Cytopathology; Director, Cytology Laboratory; Director, Cytopathology Fellowship Program, Pathology; Director, Anatomic Pathology Elective Program, Pathology. Clinical interests: oncologic pathology, urologic pathology, cytopathology.



Paul Jay Cohen, MD, Associate Professor of Clinical Pathology; Chair, Bridgeport Hospital Pathology; Site Director, Yale Pathology Residency Program at Bridgeport Hospital. Clinical interests: general surgical pathology, thoracic pathology, gynecologic pathology.



Joanna Gibson, MD, PhD, Associate Professor of Clinical Pathology; Director, Quality and Patient Safety, Pathology. Clinical interests: colorectal polyposis and carcinogenesis, inflammatory bowel disease, Barrett esophagus, liver disease and transplantation, gastrointestinal neuroendocrine tumors, tumor molecular profiling.



Mohamed Kahila, MBBCh, Assistant Professor of Pathology. Clinical interests: breast pathology, molecular genetics pathology.



Rebecca Baldassarri, MD, Assistant Professor of Pathology. Clinical interests: cytopathology, gynecologic pathology.



Lorraine Colón-Cartagena, MD, Assistant Professor of Pathology. Clinical interests: oncologic and breast pathology, breast cancer genomics.



Earl J. Glusac, MD, Professor of Pathology and of Dermatology; Director, Physician Associate Studies. Clinical interest: melanocytic tumors.



Samuel Katz, MD, PhD, Associate Professor of Pathology. Clinical interest: hematopathology.



Andrea Barbieri, MD, Associate Professor of Pathology; Residency Program Director, Pathology. Clinical interests: gastrointestinal pathology, endocrine head and neck pathology.



Shawn E. Cowper, MD, Professor of Dermatology. Clinical interests: nephrogenic systemic fibrosis, alopecia, informatics.



Pallavi Gopal, MD, PhD, Assistant Professor of Pathology. Director, Neuropathology and Human Brain Discovery, Pathology; Director, Neuropathology Fellowship, Pathology. Clinical interests: neuropathology, neurodegenerative disease.



Christine J. Ko, MD, Professor of Dermatology and Pathology. Clinical interests: cutaneous and adnexal neoplasms.



Marcus W. Bosenberg, MD, PhD, Anthony N. Brady Professor of Dermatology, Pathology and Immunobiology; Director, Yale SPORC in Skin Cancer; Director, Yale Center for Immuno-Oncology; Co-Leader, Cancer Immunology, Yale Cancer Center. Clinical interests: melanocytic neoplasms, soft tissue tumors, cutaneous lymphoma.



Sanja Dacic, MD, PhD, Professor of Pathology; Vice Chair and Director of Anatomic Pathology. Clinical interests: thoracic pathology, molecular pathology.



Robert Homer, MD, PhD, Professor of Pathology; Director, Medical Studies, Anatomic Pathology. Clinical interests: thoracic pathology, immunopathology.



Uma Krishnamurti, MD, MBBS, PhD, Professor of Pathology and Director of Breast Pathology; Director of Breast Pathology, Pathology. Clinical interests: breast pathology, cytopathology, gynecologic pathology.



Demetrios T. Braddock, MD, PhD, Associate Professor of Pathology. Clinical interests: urologic pathology, hematopathology, disorders of bone metabolism.



Marcello DiStasio, MD, PhD, Assistant Professor of Pathology; Co-Director, Yale Legacy Tissue Donation Program, Pathology. Clinical interests: neurodegenerative, neuropsychiatric and retinal disorders.



Won Jae Huh, MD, PhD, Assistant Professor of Pathology. Clinical interests: preneoplastic lesions in the stomach and liver.



Deepika Kumar, MD, Assistant Professor of Pathology. Clinical interests: hematopathology, genitourinary pathology, renal pathology.



Natalia Buza, MD, Professor of Pathology; Director, Pathology Center of Excellence for Women's Health, Anatomic Pathology; Director, Gynecologic Pathology Fellowship Program, Anatomic Pathology. Clinical interest: gynecologic pathology.



Jeffrey Eskendri, DMD, Assistant Professor Adjunct in Pathology. Clinical interests: oral and maxillofacial pathology.



Pei Hui, MD, PhD, Professor of Pathology and of Obstetrics, Gynecology and Reproductive Sciences; Director, Gynecologic Pathology; Clinical Director, Molecular Diagnostics Laboratories. Clinical interests: gynecologic pathology, general surgical pathology, molecular diagnostics.



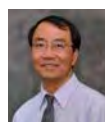
William Bradlyn Laskin, MD, Professor of Pathology. Clinical interests: soft tissue and bone tumors.



Guoping Cai, MD, MS, Professor of Pathology; Associate Director of Cytopathology, Pathology. Clinical interests: fine needle aspiration (FNA), cytopathology, urologic pathology, thoracic pathology.



Karin Finberg, MD, PhD, Associate Professor of Pathology. Clinical interests: molecular diagnosis of inherited and acquired clinical disorders, disorders of iron metabolism.



Anita Huttner, MD, Associate Professor of Pathology. Clinical interests: neuropathology, molecular genetic pathology.



Angelique W. Levi, MD, Associate Professor of Pathology; Affiliated Faculty, Yale Institute for Global Health; Vice Chair of Operations and Director of Pathology Reference Services, Pathology; CLIA Laboratory and Medical Director, Pathology. Clinical interests: Public health, COVID testing, gynecologic cytopathology, HPV-associated uterine cervical disease, urologic pathology, MRI-targeted prostate cancer.



Anjela Galan, MD, Associate Professor of Dermatology and Pathology; Associate Director, Dermatopathology Fellowship. Clinical interests: melanocytic skin neoplasms, soft tissue tumors, general neoplastic and non-neoplastic dermatopathology.



Yuanxin Liang, MD, PhD, Assistant Professor of Pathology. Clinical interests: breast pathology, gastrointestinal pathology, general surgical pathology.

Clinical Faculty



Chen Liu, MD, PhD, Anthony N. Brady Professor of Pathology; Chair, Pathology; Chief of Pathology, YNHH, Pathology. Clinical interest: liver pathology.



Jon S. Morrow, MD, PhD, Raymond Yesner Professor of Pathology. Clinical interests: hematologic and renal disorders.



Marie Robert, MD, Professor of Pathology and of Medicine (Digestive Diseases). Clinical interests: celiac disease, pancreas cancer, immune therapy related gastroenteritis and colitis, fatty liver disease, hepatocellular carcinoma.



He Wang, MD, PhD, Associate Professor of Pathology; Director of Anatomic Pathology and Cytopathology, VA Connecticut Healthcare System, West Haven Campus, Pathology and Cytopathology; Director, Cardiovascular Pathology, Pathology. Clinical interests: cardiovascular pathology, thoracic pathology.



Wenyi Luo, MD, PhD, Assistant Professor of Pathology. Clinical interest: GI pathology.



Peggy Myung, MD, PhD, Associate Professor of Dermatology and of Pathology; Vice Chair of Research, Dermatology. Clinical interests: dermatopathology, clinical dermatology.



Harry Sanchez, MD, Assistant Professor; Director of Autopsy Services, Pathology; Co-Director, Yale Legacy Tissue Donation Program, Pathology. Clinical interests: autopsy pathology, quality management, microbiology, medical education, medical history.



Minhua Wang, MD, PhD, MS, Assistant Professor of Pathology. Clinical interests: cytology, cytopathology.



Declan McGuone, FRCPath Neuro, MBBS, Associate Professor of Pathology. Clinical interests: neuropathy, forensic pathology, autopsy.



ILKe Nalbantoglu, MD, Associate Professor of Pathology. Clinical interests: gastrointestinal and liver pathology, pediatric pathology.



Alexa Siddon, MD, Associate Professor Term; Hematopathology Fellowship Director, Laboratory Medicine; Director, Molecular Diagnostics Laboratory, Laboratory Medicine; Director, Flow Cytometry, Laboratory Medicine; Associate Director, Hematology Laboratory, Laboratory Medicine. Clinical interests: molecular and laboratory diagnosis of lympho-proliferative disorders.



Hao Wu, MD, PhD, Associate Professor of Pathology. Clinical interests: pediatric solid tumors, diseases of the gastrointestinal tract, diseases of the bone and soft tissue.



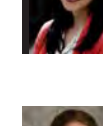
Jennifer M. McNiff, MD, Professor of Dermatology and Pathology; Director, Yale Dermatopathology Laboratory. Clinical interests: cutaneous lymphomas and clinicopathologic correlations.



Gauri Panse, MD, Assistant Professor of Dermatology and Pathology. Clinical interests: dermatopathology and soft tissue pathology.



John H. Sinard, MD, PhD, Professor of Pathology and of Ophthalmology and Visual Science; Medical Director, Pathology Informatics, Pathology. Clinical interests: pathology informatics, ophthalmic pathology, autopsy, tumor pathology.



Mina Xu, MD, Associate Professor of Pathology and Laboratory Medicine; Director of Hematopathology, Pathology; Director, Expert Consultation Practice, Pathology. Clinical interests: leukemia, lymphomas, myeloid neoplastic disorders.



Christine Minerowicz, MD, Assistant Professor; Medical Director - Milford Campus Core Laboratory & Blood Bank, Pathology. Clinical interests: pulmonary pathology, neoplastic and interstitial lung disease.



Vinita Parkash, MBBS, MPH, Associate Professor of Pathology, Obstetrics, Gynecology, and Reproductive Services. Clinical interests: gynecologic pathology, clinical quality patient safety.



Kristin Stendahl, MD, Assistant Professor of Pathology and Laboratory Medicine. Clinical interests: cytopathology, laboratory medicine, particularly transfusion medicine.



Isil Yildiz, MD, MPH, Assistant Professor of Pathology; Affiliated Faculty, Yale Institute for Global Health. Clinical interests: cytopathology, ultrasound-guided fine needle aspiration, general surgical pathology.



Joseph Misdraji, MD, Professor of Pathology; Director, Immunohistochemistry Laboratory, Pathology; Director, Gastrointestinal Pathology Fellowship Program, Pathology. Clinical interests: gastrointestinal pathology, appendices neoplasia, hepatic pathology.



Sudir Perincheri, MBBS, PhD, Assistant Professor of Pathology; Director of Digital Pathology, Pathology. Clinical interests: hematopathology, renal pathology, GU pathology, digital pathology.



Tong Sun, MD, PhD, Assistant Professor of Pathology. Clinical interests: cytopathology, molecular pathology, GU pathology.



Mingfu Yu, MD, MS, Assistant Professor of Pathology; Medical Director of Anatomic Pathology at Saint Raphael Campus. Clinical interest: general surgical pathology.



Gilbert Moeckel, MD, PhD, FASN, Professor of Pathology; Director, Renal, Transplant Pathology and Electron Microscopy Laboratory, Pathology; Director, Renal & Genitourinary Fellowship Program, Pathology. Clinical interests: renal pathology, progression of interstitial fibrosis, acute kidney cell injury, renal cell carcinoma microenvironment.



Manju Prasad, MD, MBBS, Professor of Pathology; Director, Endocrine, Head & Neck Pathology Fellowship Program, Pathology; Director, Endocrine, Head and Neck Pathology, Pathology. Clinical interests: endocrine head and neck pathology.



Sumi Thomas, MBBS, Assistant Professor of Pathology. Clinical interests: anatomic pathology, cytopathology.



Haiying Zhan, MD, PhD, Assistant Professor of Pathology. Clinical interests: breast pathology, general pathology.



Rafaella Morotti, MD, Professor of Pathology and Pediatrics; Director, Pediatric Pathology, Pathology; Associate Director, Autopsy Service. Clinical interests: perinatal pathology, pathology of solid tumors (pediatric), pediatric liver disease.



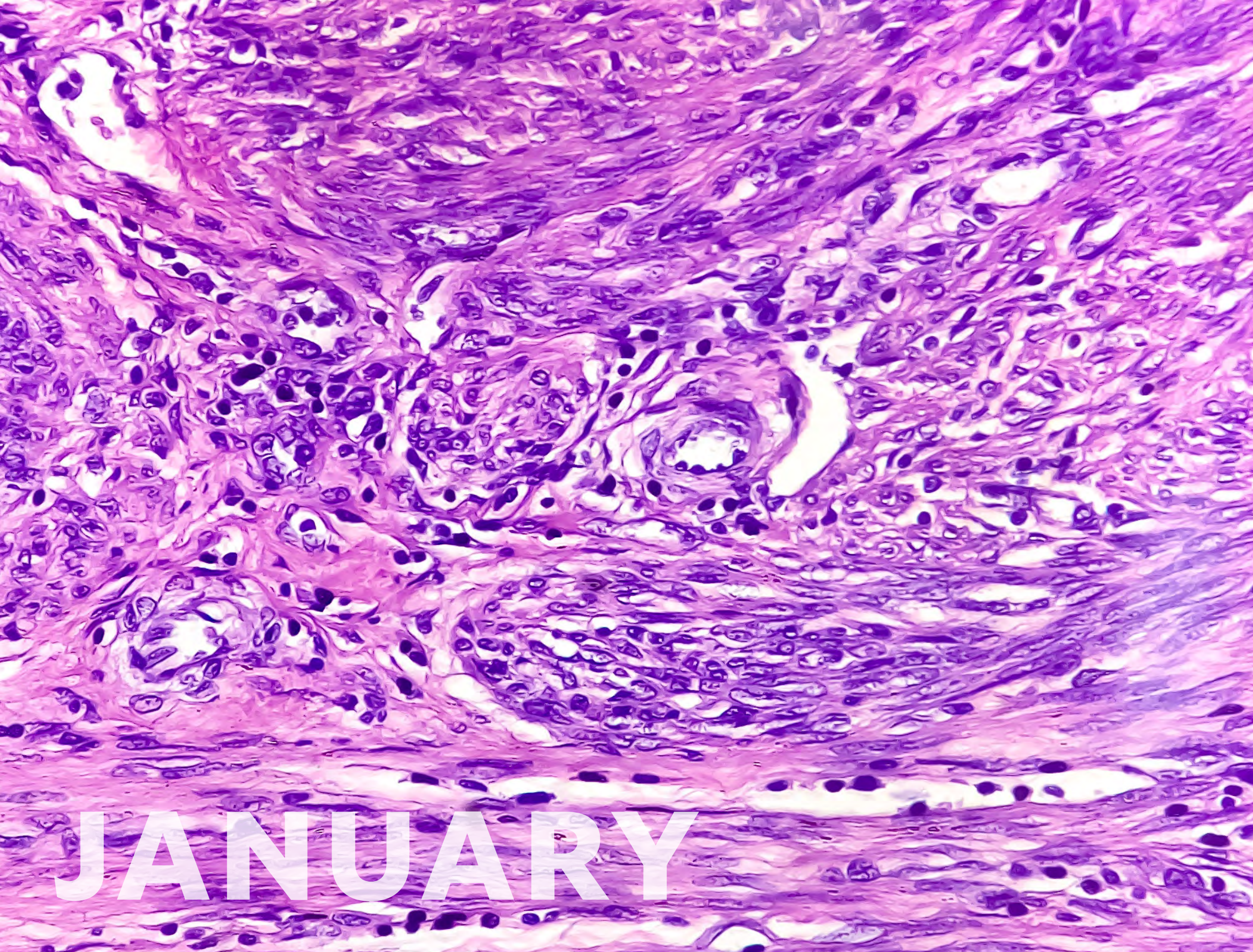
David Rimm, MD, PhD, Anthony N. Brady Professor of Pathology and Professor of Medicine (Medical Oncology); Director, Yale Cancer Center Tissue Microarray Facility, Pathology; Director, Yale Quantitative Diagnostics in Anatomic Pathology Laboratory, Pathology; Director, Physician Scientist Training Program, Pathology Research. Clinical interests: immunohistochemistry and immunotherapy diagnostics.



Zenta Walther, MD, PhD, Associate Professor of Pathology; Clinical Director, YNHH Tumor Profiling Laboratory; Director, Molecular Genetic Pathology Fellowship Program. Clinical interests: molecular pathology of solid tumors, precision medicine.



Xuchen Zhang, MD, PhD, Professor of Pathology; Director, Gastrointestinal & Liver Pathology; Director, Gastrointestinal & Liver Pathology Fellowship Program, Pathology. Clinical interests: gastrointestinal and liver pathology; thoracic pathology.



JANUARY

Cytopathology

The Cytopathology Service and Cytology Laboratory is staffed by nine cytopathologists, 14 cytotechnologists, nine clinical/preparatory technologists, and five administrative staff members. The laboratory provides comprehensive services to the hospital and its clinicians and to several clinicians in the community as part of our outreach mission. All types of cytologic specimens are routinely received and processed, including gynecologic and non-gynecologic cytology, fine needle aspiration biopsy, and specimens from consultation services. The Cytopathology personnel participate fully in the teaching programs of the hospital and medical school. An active clinical research program is distributed among the team members.

OUR SERVICES

- World-recognized expertise in Cytopathology consultation and education
- Maintenance of excellent patient care activities, using the newest and most cost-effective technology available. In addition, new modes of ancillary testing for neoplasia detection, prognosis, and classification are being tested and added as appropriate
- Use of upgraded computerized-automated ThinPrep slide imaging system
- Performance and provision of rapid on-site interpretation of fine needle aspirations of palpable and non-palpable masses obtained under radiologic guidance.
- Development and incorporation of new and advanced diagnostic techniques in cytology specimen procurement and processing, and fostering an environment in which clinical, translational, and basic research can be successfully performed.

OUR TEAM

Adebowale Adeniran, MD, Director
 Guoping Cai, MD, MS, Associate Director
 Rita Abi-Raad, MD
 Uma Krishnamurti, MD, MBBS, PhD
 Angelique W. Levi, MD
 He Wang, MD, PhD
 Tong Sun, MD, PhD
 Minhua Wang, MD, PhD, MS
 Kristin Stendahl, MD
 Sanhong Yu, MD, PhD



DECEMBER

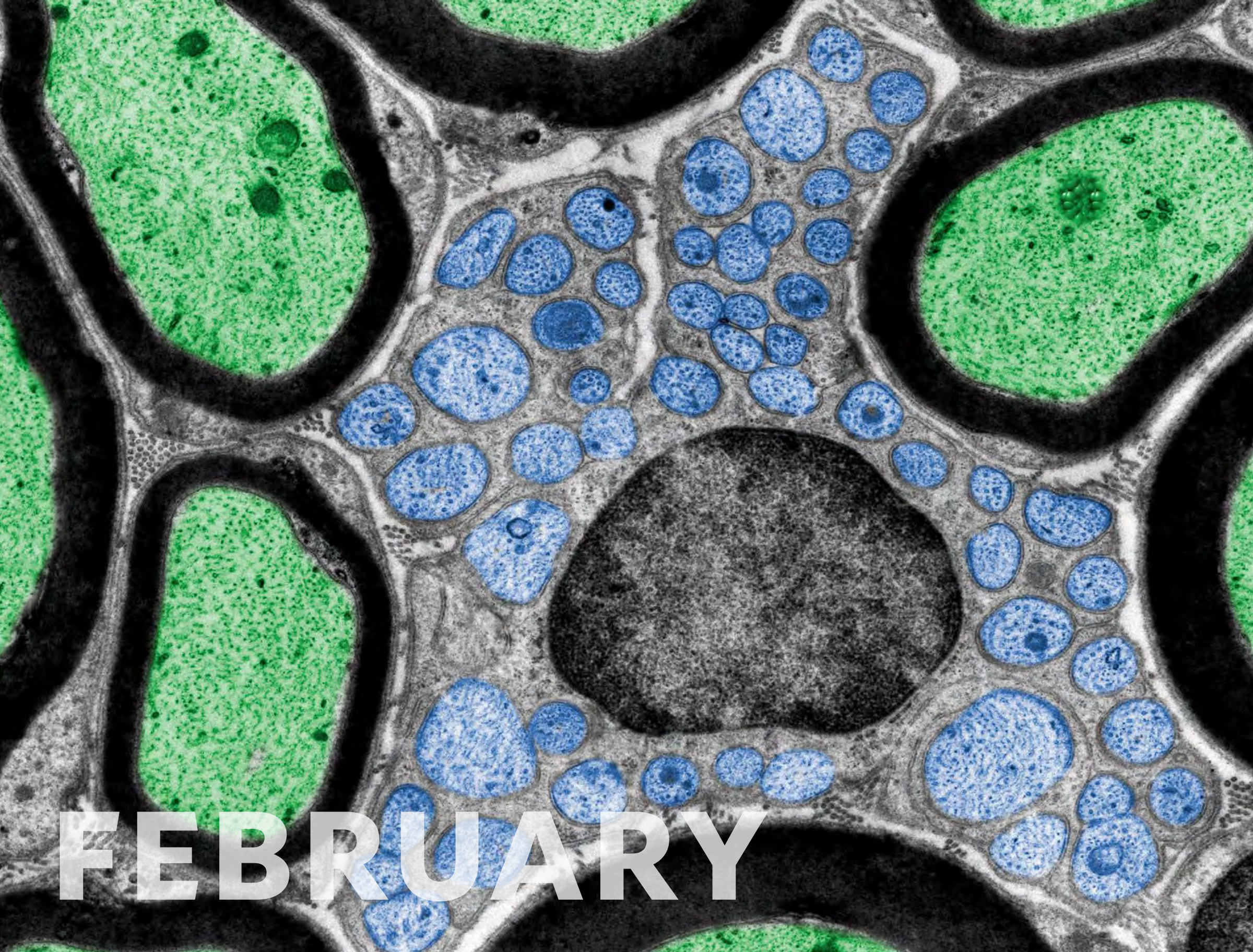
S	M	T	W	T	F	S
					1	2
3	4	5	6	7	8	9
10	11	12	13	14	15	16
17	18	19	20	21	22	23
24	25	26	27	28	29	30
31						

FEBRUARY

S	M	T	W	T	F	S	
					1	2	3
4	5	6	7	8	9	10	
11	12	13	14	15	16	17	
18	19	20	21	22	23	24	
25	26	27	28	29			

JANUARY 2024

Sunday	Monday	Tuesday	Wednesday	Thursday	Friday	Saturday
31	1	2	3	4	5	6
7	8	9	10	11	12	13
14	15	16	17	18	19	20
21	22	23	24	25	26	27
28	29	30	31	1	2	3



FEBRUARY

Renal Pathology and Electron Microscopy

The Renal Pathology and Electron Microscopy Laboratory at Yale is world-renowned for accurate, timely, and personalized kidney biopsy and electron microscopy diagnostic services. The Lab offers light microscopy, immunofluorescence, and electron microscopy analysis on all kidney biopsy specimens and specialized testing for rare diseases such as Alport's syndrome, collagenous fibrillary nephropathy, amyloidosis, and monoclonal light chain-mediated diseases.

We are bringing advanced technology (confocal IF, immune EM) to the practice of renal pathology to enhance diagnostic accuracy. We also provide electron microscopy analysis for viral diseases (Corona virus, CMV, Polyoma virus), ciliary disease, tumors of unknown origin, and parasitic diseases. We provide clients within the United States and abroad with timely, accurate, and personalized diagnostic services. Our reports are accessible to international clients through the Yale RELAY online reporting system 24 hours a day. Dr. Moeckel has been the director of the Renal & EM Laboratory since 2008 and has expanded the Lab's national and international reputation as one of the leading diagnostic renal and EM pathology labs in the world.

OUR TEAM

Gilbert Moeckel, MD, PhD, FASN, Director
Sudhir Perincheri, MD, PhD, MBBS



JANUARY

S	M	T	W	T	F	S
	1	2	3	4	5	6
7	8	9	10	11	12	13
14	15	16	17	18	19	20
21	22	23	24	25	26	27
28	29	30	31			

MARCH

S	M	T	W	T	F	S
						1 2
3	4	5	6	7	8	9
10	11	12	13	14	15	16
17	18	19	20	21	22	23
24	25	26	27	28	29	30
31						

FEBRUARY 2024

Sunday	Monday	Tuesday	Wednesday	Thursday	Friday	Saturday
28	29	30	31	1	2	3
4	5	6	7	8	9	10
11	12	13	14	15	16	17
18	19	20	21	22	23	24
25	26	27	28	29	1	2



MARCH

Genitourinary Pathology

The Yale Program in Genitourinary Pathology provides nationally leading pathologic diagnostic expertise in genitourinary (GU) diseases, particularly prostate, kidney, bladder, and testis cancer. The GU Pathology director, Dr. Peter Humphrey, is co-author of national GU pathology practice guidelines and several GU pathology textbooks. Our group of dedicated GU pathology subspecialists offers expert, in-depth histopathologic slide interpretations, state-of-the-art immunophenotyping, and access to Yale Pathology molecular genetic GU tumor profiling. We are engaged in GU translational cancer research, such as use of machine learning and artificial intelligence in prostate cancer diagnosis, grading, and prognostication, using H&E-stained slides. Yale Genitourinary Pathology Services in Yale Pathology Labs thus will continue to lead in providing the best diagnosis, enhanced by innovative technological tools, for patients with diseases of the genitourinary system.

OUR TEAM

- Peter A. Humphrey, MD, PhD, Director
- Adebowale Adeniran, MD
- Guoping Cai, MD, MS
- Angelique W. Levi, MD
- Deepika Kumar, MD



FEBRUARY

S	M	T	W	T	F	S
				1	2	3
4	5	6	7	8	9	10
11	12	13	14	15	16	17
18	19	20	21	22	23	24
25	26	27	28	29		

APRIL

S	M	T	W	T	F	S
	1	2	3	4	5	6
7	8	9	10	11	12	13
14	15	16	17	18	19	20
21	22	23	24	25	26	27
28	29	30				

MARCH 2024

Sunday	Monday	Tuesday	Wednesday	Thursday	Friday	Saturday
25	26	27	28	29	1	2
3	4	5	6	7	8	9
10	11	12	13	14	15	16
17	18	19	20	21	22	23
24	25	26	27	28	29	30
31	1	2	3	4	5	6



APRIL

Hematopathology

The Yale Hematopathology Program specializes in the evaluation of lymph nodes, bone marrow, blood, spleen, and hematolymphoid tissues in all organs. The strength of the service lies in the expertise of our hematopathology board-certified faculty. Our group receives external slide consultations from across the nation and international sites for primary diagnoses and second opinions.

Challenging cases are discussed at weekly consensus conferences. Yale hematopathologists are advancing the field with their research into predictive biomarkers, pathways of cell death, and novel tools that lead to precision diagnostics. Their strong collaboration with immunology, genetics, hematology, and oncology allows for promising new discoveries. The faculty regularly teach other subspecialists at national and international conferences.

Our average turnaround time for rush biopsies is less than 24 hours. Urgent results incorporating aspirate morphology, histology, flow cytometry, immunohistochemistry, FISH/cytogenetic, and state-of-the-art molecular studies, as necessary, are reported immediately to submitting physicians.

OUR TEAM

- Mina Xu, MD, Director
- Demetrios Braddock, MD, PhD
- Samuel Katz, MD, PhD
- Sudhir Perincheri, MD, PhD, MBBS
- Alexa Siddon, MD
- Deepika Kumar, MD
- Po-Han Chen, MD, PhD



APRIL 2024

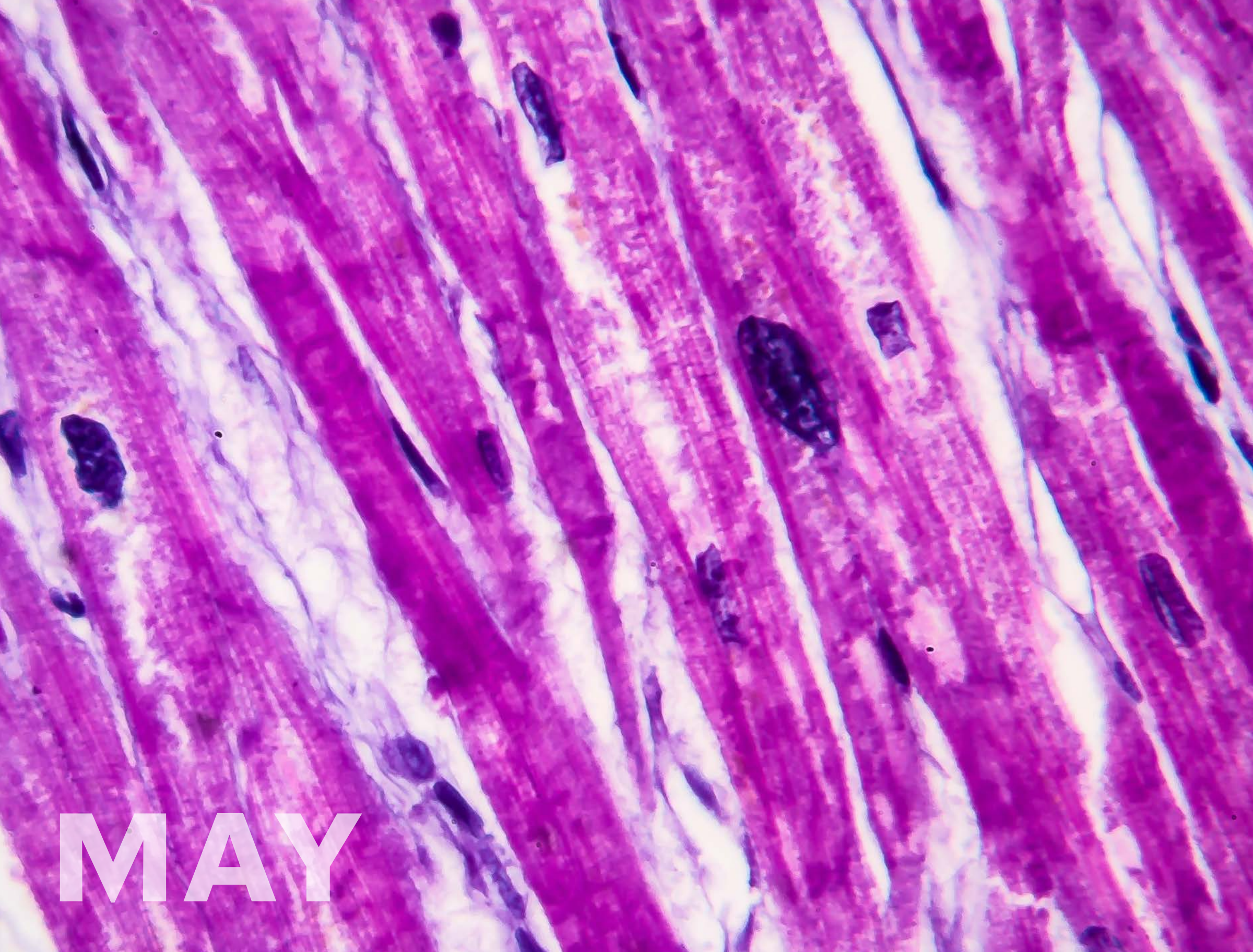
MARCH

S	M	T	W	T	F	S
					1	2
3	4	5	6	7	8	9
10	11	12	13	14	15	16
17	18	19	20	21	22	23
24	25	26	27	28	29	30
31						

MAY

S	M	T	W	T	F	S
				1	2	3
4	5	6	7	8	9	10
11	12	13	14	15	16	17
18	19	20	21	22	23	24
25	26	27	28	29	30	31

Sunday	Monday	Tuesday	Wednesday	Thursday	Friday	Saturday
31	1	2	3	4	5	6
7	8	9	10	11	12	13
14	15	16	17	18	19	20
21	22	23	24	25	26	27
28	29	30	1	2	3	4



MAY

Yale Cardiovascular Pathology

Yale Cardiovascular Pathology Service provides comprehensive diagnostic expertise in the pathology of the heart and blood vessels, and our services include the most up-to-date classification of antibody and acute cellular rejection in adult and pediatric transplanted hearts. Our team of expert cardiovascular pathologists are world-renowned and have decades of experience. We receive and review 2,000 cardiovascular specimens annually. Our faculty members collaborate closely with cardiologists, cardiac surgeons, cardiovascular radiologists, and translational investigators.

OUR TEAM

He/Peter Wang, MD, PhD, Director
Sanja Dacic, MD, PhD
Robert Homer, MD, PhD
Guoping Cai, MD, MS
Xuchen Zhang, MD, PhD
Yibing Qyang, PhD
Christine Minerowicz, MD
Deepika Kumar, MD

Thoracic Pathology

The Yale Thoracic Pathology Program offers comprehensive diagnostic services on biopsies and resections from the lung, mediastinum, and chest wall. Results of comprehensive examinations are rendered emphasizing prognosis and prediction of therapy response. We are engaged in thoracic cancer research looking at genomic and other predictors of response to cancer therapy. The team's expertise includes lung cancer, interstitial lung disease, mesothelioma, thymic lesions, and lung transplantation.

OUR TEAM

Sanja Dacic, MD, PhD, Director
Christine Minerowicz, MD, BA
Robert Homer, MD, PhD



MAY 2024

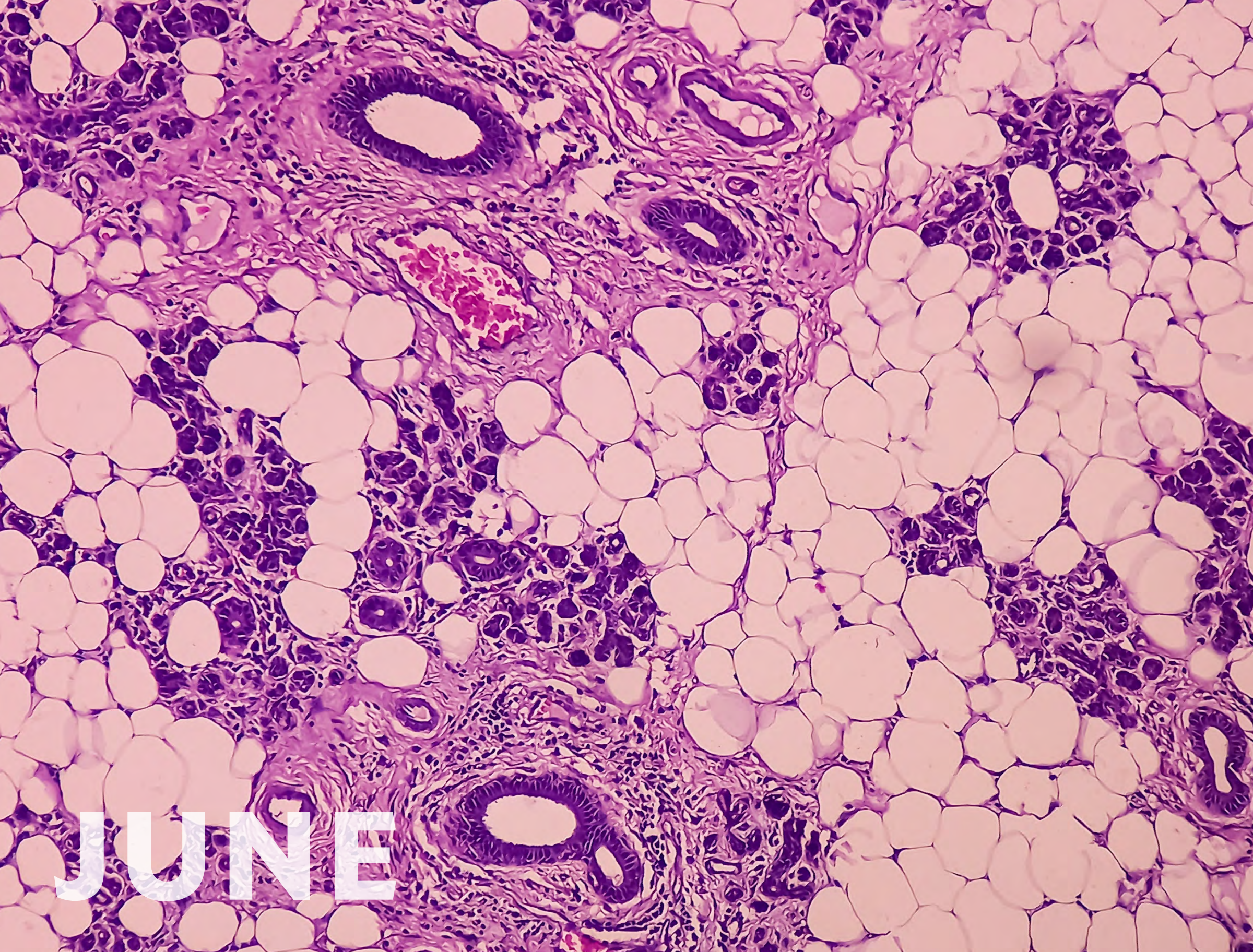
APRIL

S	M	T	W	T	F	S
	1	2	3	4	5	6
7	8	9	10	11	12	13
14	15	16	17	18	19	20
21	22	23	24	25	26	27
28	29	30				

JUNE

S	M	T	W	T	F	S
						1
2	3	4	5	6	7	8
9	10	11	12	13	14	15
16	17	18	19	20	21	22
23	24	25	26	27	28	29
30						

Sunday	Monday	Tuesday	Wednesday	Thursday	Friday	Saturday
28	29	30	1	2	3	4
5	6	7	8	9	10	11
12	13	14	15	16	17	18
19	20	21	22	23	24	25
26	27	28	29	30	31	1



JUNE

Endocrine, Head & Neck Pathology

The only one in Connecticut and one of a few in the U.S. and the world, the **Yale Endocrine, Head & Neck Pathology Program** deals with tumors of the head and neck and of major endocrine glands (thyroid, parathyroids and adrenals). The subspecialty practice has board-certified pathologists including an oral and ophthalmic pathologist and an ACGME-approved fellowship. The team supports the Smilow Cancer Hospital, a tertiary referral center that treats many complex cancers and rare diseases of the head, neck, and endocrine organs. We offer comprehensive diagnostic services on oral biopsy and cytology, including jaw tumors and cysts, to the Yale Oral and Maxillofacial Surgery Program and several dental practices in Connecticut.

Our well-appointed immunohistochemistry and molecular laboratories help disease management through routinely offering p16 and PD-L1 testing by immunohistochemistry and high-risk HPV testing by PCR on formalin-fixed paraffin-embedded head and neck cancers. The Program is led by an experienced, fellowship-trained pathologist of national and international repute who is available and readily accessible for second opinions and consultations.

OUR TEAM

Manju Prasad, MD, MBBS, Director
Sanhong Yu, MD
Jeffrey Eskendri, DMD
John Sinard, MD, PhD



JUNE 2024

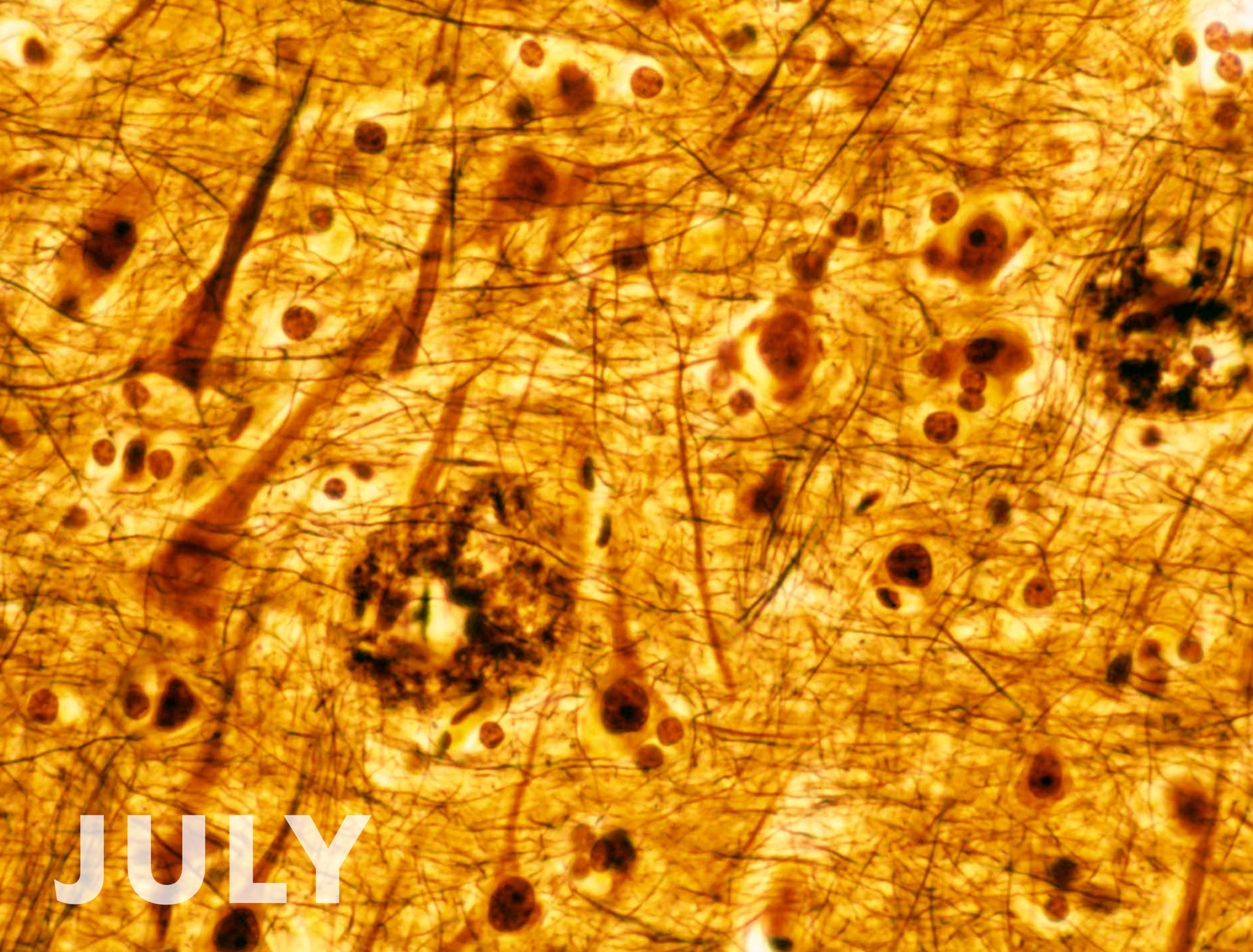
MAY

S	M	T	W	T	F	S
			1	2	3	4
5	6	7	8	9	10	11
12	13	14	15	16	17	18
19	20	21	22	23	24	25
26	27	28	29	30	31	

JULY

S	M	T	W	T	F	S
	1	2	3	4	5	6
7	8	9	10	11	12	13
14	15	16	17	18	19	20
21	22	23	24	25	26	27
28	29	30	31			

Sunday	Monday	Tuesday	Wednesday	Thursday	Friday	Saturday
26	27	28	29	30	31	1
2	3	4	5	6	7	8
9	10	11	12	13	14	15
16	17	18	19	20	21	22
23	24	25	26	27	28	29
30	1	2	3	4	5	6



JULY

Neuropathology

The Yale Neuropathology Service specializes in the evaluation of disorders involving brain, spinal cord, skeletal muscle, and peripheral nerve for adult and pediatric patients. All faculty members are subspecialty trained and board-certified in neuropathology. Aside from acute, intraoperative frozen section coverage, which is exclusively provided by board-certified neuropathologists, faculty members are also expert consultants for the postmortem assessment of neurological disorders. The Neuropathology Service aims to provide excellent clinical care while incorporating cutting-edge molecular technologies into daily practice for primary and consultation cases. Complex cases are discussed in detail among expert neuropathologists at weekly consensus conferences and ad hoc. All faculty members are involved nationally and internationally in professional societies and actively contribute to advancements in the field. The Program also offers a highly competitive ACGME-accredited two-year fellowship in neuropathology, which prepares for board certification in neuropathology and academic practice.

SERVICES AND EXPERTISE

The Yale Neuropathology Service provides diagnostic services to Yale New Haven Hospital and Yale's Smilow Cancer Hospital. In addition, the Yale Neuropathology Team provides expert diagnostic care for surrounding hospitals, including the Saint Raphael Campus in New Haven, Bridgeport Hospital, Greenwich Hospital, Milford Hospital, and Griffin Hospital. We also have an open-access brain donation program for patients and families who wish to support basic and translational research into causes and potential treatments for age-related neurologic diseases, the Center for Human Brain Discovery.

OUR TEAM

Pallavi Gopal, MD, PhD, Director
 Declan McGuone, FRCPath Neuro, MBChB
 Marcello DiStasio, MD, PhD
 Anita Huttner, MD



JULY 2024

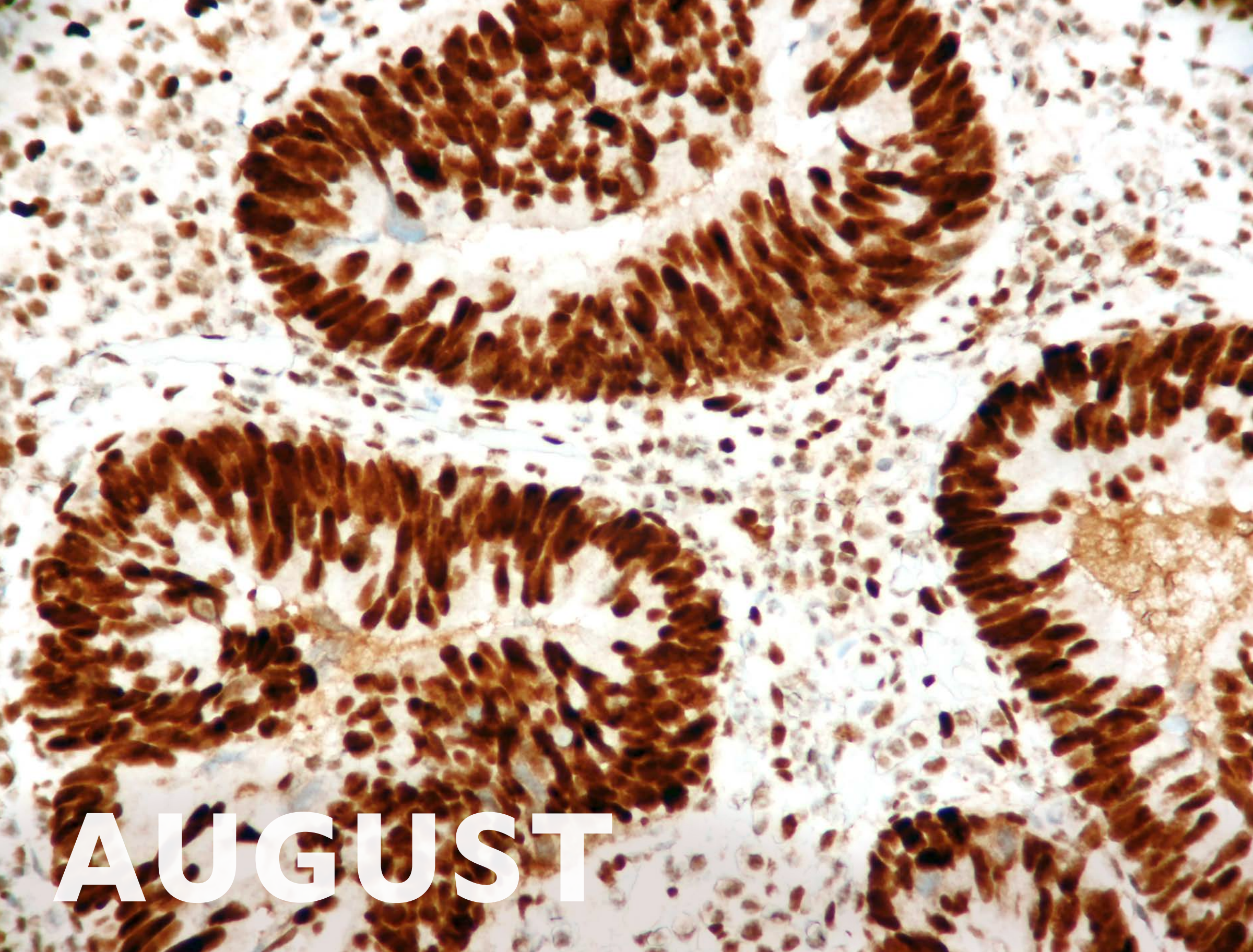
JUNE

S	M	T	W	T	F	S
						1
2	3	4	5	6	7	8
9	10	11	12	13	14	15
16	17	18	19	20	21	22
23	24	25	26	27	28	29
30						

AUGUST

S	M	T	W	T	F	S
				1	2	3
4	5	6	7	8	9	10
11	12	13	14	15	16	17
18	19	20	21	22	23	24
25	26	27	28	29	30	31

Sunday	Monday	Tuesday	Wednesday	Thursday	Friday	Saturday
30	1	2	3	4	5	6
7	8	9	10	11	12	13
14	15	16	17	18	19	20
21	22	23	24	25	26	27
28	29	30	31	1	2	3



AUGUST



Ophthalmic Pathology

The eye and its surrounding structures (eyelids, conjunctiva, cornea, orbit, globe) represent a unique portion of the human anatomy. Many of the diseases that affect this area are unique to the peri-ocular region or use a different terminology. Yale Pathology has responded to the unique needs of ophthalmologists by developing a subspecialty service in Ophthalmic Pathology. The Service receives specimens from the Yale Ophthalmology Clinic and from private ophthalmology offices throughout the state. **The Yale Ophthalmic Pathology Program** is also responsible for educating both the pathology residents and the ophthalmology residents in ophthalmic pathology.

LEADERSHIP

John Sinard, MD, PhD, Director

Immunohistochemistry Laboratory

The Yale Immunohistochemistry (IHC) Laboratory provides CAP/CLIA-certified high-quality state-of-the-art specialized revolutionary technologic services in immunohistochemistry, immunofluorescence, and in-situ hybridization. Immunohistochemistry plays a key role in diagnosis, prognosis, and therapeutics. We offer over 300 antibodies for the diagnostic work-up of various malignancies and infectious diseases. We maintain quality control systems that address technical issues related to staining and instrumentation to enhance laboratory-based quality of care for our patients. We use robust positive and negative controls, significantly reducing false negative and false positive results. Select multiplexed technologies are available that will allow two or more antibodies to be investigated simultaneously at different subcellular localizations. This has the added advantage of conserving critical tissue for potential molecular testing essential to patient care.

OUR TEAM

Joseph Misdraji, MD, Director
Yuanxin Liang, MD, PhD, Assistant Director

JULY

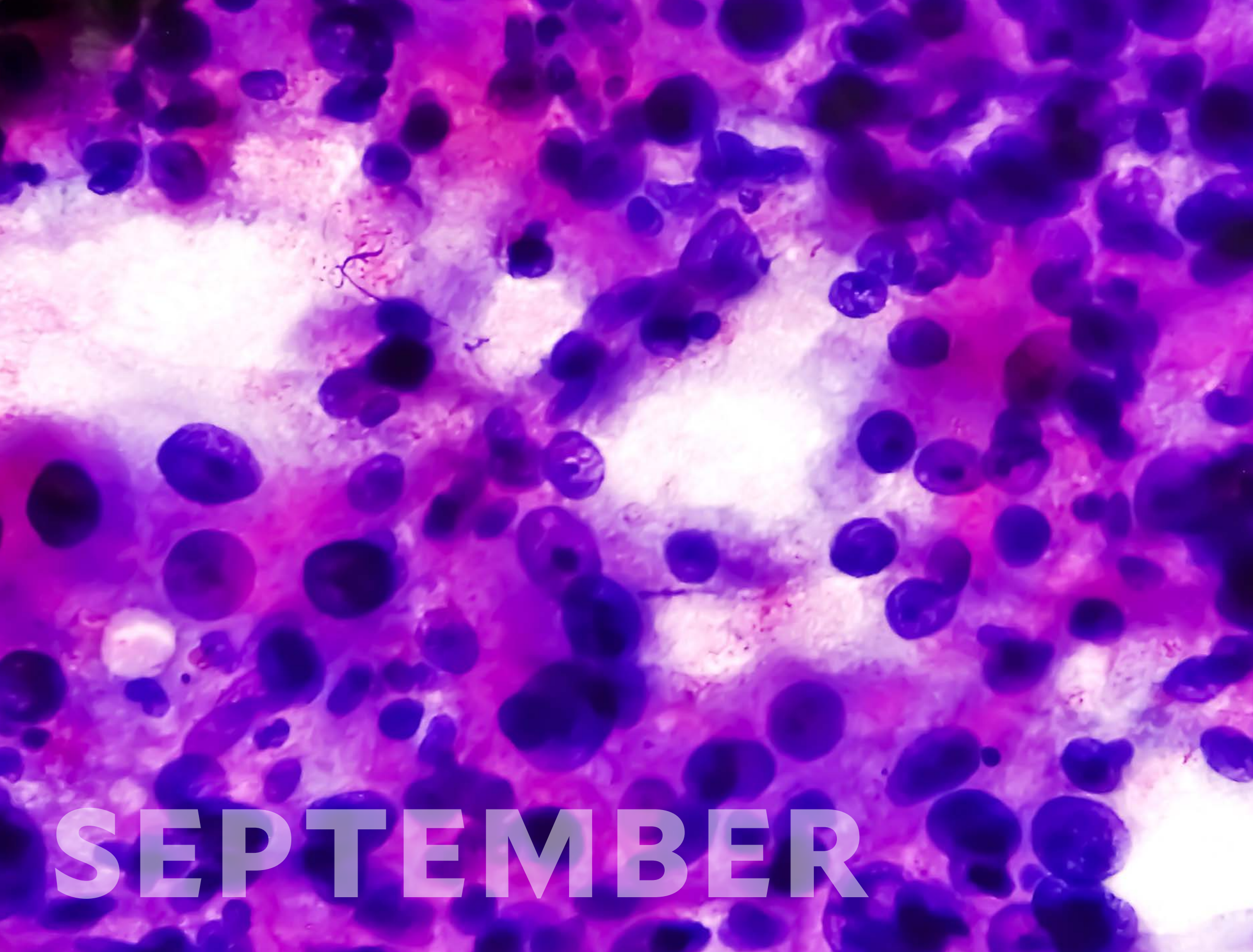
S	M	T	W	T	F	S
	1	2	3	4	5	6
7	8	9	10	11	12	13
14	15	16	17	18	19	20
21	22	23	24	25	26	27
28	29	30	31			

SEPTEMBER

S	M	T	W	T	F	S
1	2	3	4	5	6	7
8	9	10	11	12	13	14
15	16	17	18	19	20	21
22	23	24	25	26	27	28
29	30					

AUGUST 2024

Sunday	Monday	Tuesday	Wednesday	Thursday	Friday	Saturday
28	29	30	31	1	2	3
4	5	6	7	8	9	10
11	12	13	14	15	16	17
18	19	20	21	22	23	24
25	26	27	28	29	30	31



SEPTEMBER

Bone and Soft Tissue Pathology

The Yale Bone and Soft Tissue Pathology team is composed of surgical pathologists from the Yale-New Haven campus who have experience and interest in neoplastic and non-neoplastic diseases of the musculoskeletal system. We work in close alliance with the musculoskeletal radiology group to provide the best diagnostic service for all clinicians. We examine all biopsy and resection specimens using gross evaluation and light microscopic and immunohistochemical techniques. We also employ advanced methods to probe protein expression and genetic alterations harbored in the patient's pathologic tissues. The data resulting from examination of the specimens are interpreted in the context of the clinical presentation and the results of diagnostic imaging studies. For complex tumor cases, a weekly multidisciplinary Tumor Board is held to make informed decisions on treatment and follow-up of the patient. We also provide a yearly series of bone and soft tissue lectures to educate residents and fellows. Research efforts primarily involve retrospective clinicopathological correlations compiling and evaluating the experience at our institution.

OUR TEAM

William Bradlyn Laskin, MD, Director
 Hao Wu, MD, PhD
 Gauri Panse, MD
 Harry Sanchez, MD

Pediatric and Perinatal Pathology

The Yale Pediatric Pathology Service provides diagnostic expertise for diseases occurring in the pediatric age range (0-21 years). In addition, the service covers perinatal pathology, with inclusion of evaluation for fetal malformations, complex congenital malformations, perinatal and pediatric autopsies, and placental pathology. Specific areas of interest include also pediatric liver diseases, pediatric gastrointestinal pathology, and tumors of pediatric age.

OUR TEAM

Raffaella Morotti, MD, Director
 Hao Wu, MD, PhD



AUGUST

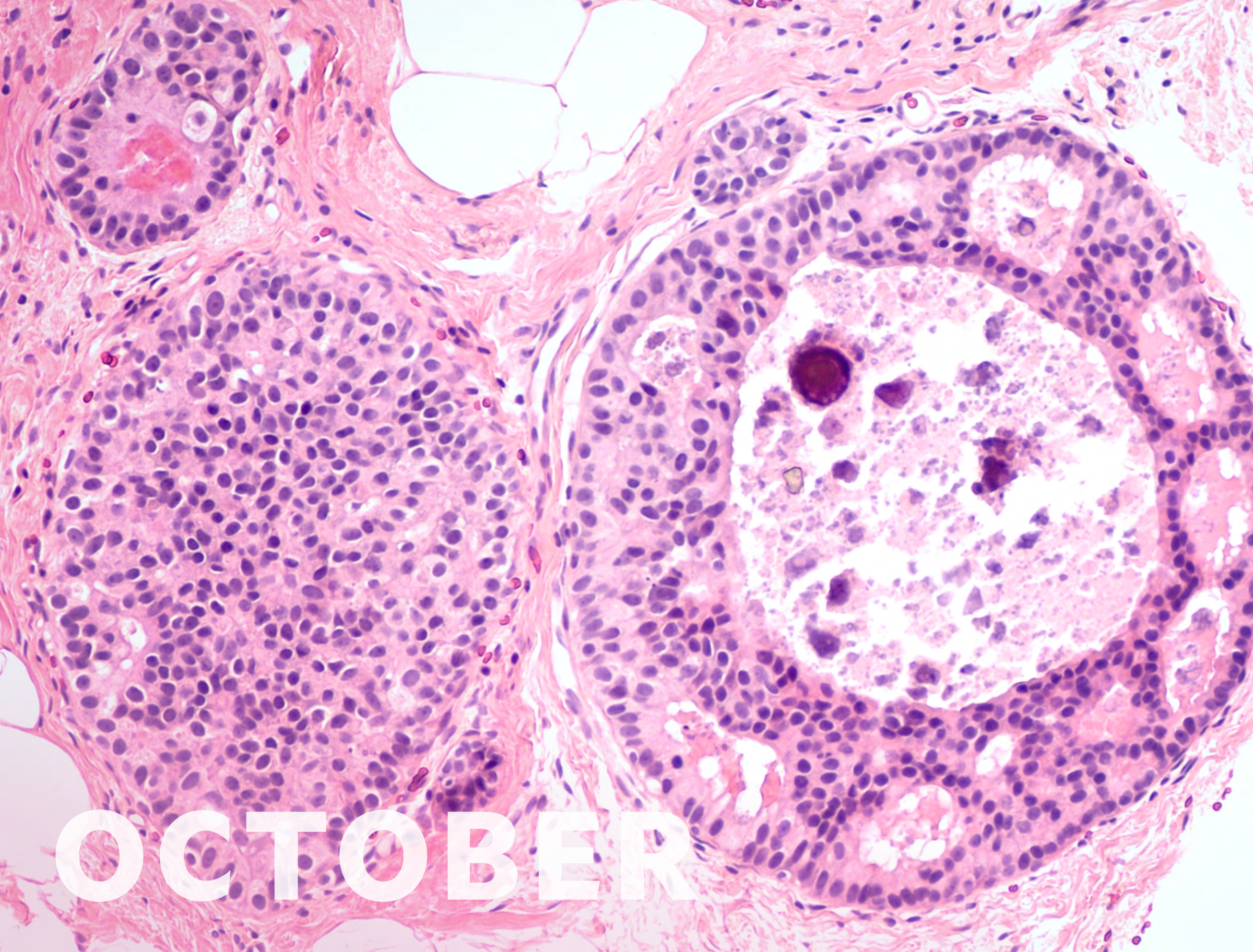
S	M	T	W	T	F	S
				1	2	3
4	5	6	7	8	9	10
11	12	13	14	15	16	17
18	19	20	21	22	23	24
25	26	27	28	29	30	31

OCTOBER

S	M	T	W	T	F	S
		1	2	3	4	5
6	7	8	9	10	11	12
13	14	15	16	17	18	19
20	21	22	23	24	25	26
27	28	29	30	31		

SEPTEMBER 2024

Sunday	Monday	Tuesday	Wednesday	Thursday	Friday	Saturday
1	2	3	4	5	6	7
8	9	10	11	12	13	14
15	16	17	18	19	20	21
22	23	24	25	26	27	28
29	30	1	2	3	4	5



OCTOBER

Center of Excellence for Women's Health

The Yale Pathology Center of Excellence for Women's Health encompasses Gynecologic and Breast Pathology clinical diagnostic services across all hospitals in the Yale New Haven Health System. The Center helps foster collaborative relationships throughout and beyond Yale School of Medicine and YNHH (Yale New Haven Hospital), focusing on the pursuit of excellence in academic Gynecologic and Breast Pathology.

LEADERSHIP

Natalia Buza, MD, Director

Breast Pathology

The Yale Breast Pathology Service focuses on precise diagnosis and providing reliable results. Board-certified pathologists with expertise in breast subspecialty interpret challenging breast cases daily. In addition to performing comprehensive studies and paying attention to detail to ensure accuracy, we review difficult diagnoses at daily consensus conferences where challenging cases are presented and discussed. Additionally, we perform necessary ancillary biomarker testing and facilitate molecular testing to aid in patient management. Pathology team members are vital contributors to The Breast Center at Smilow Cancer Hospital, which is accredited by the National Accreditation Program for Breast Centers and was the first National Cancer Institute Comprehensive Cancer Center in the Northeast to hold this designation.

OUR TEAM

Uma Krishnamurti, MD, MBBS, PhD, Director
 Yuanxin Liang, MD
 Haiying Zhan, MD, PhD
 Mohamed Kahila, MBBCh
 Lorraine Colón-Cartagena, MD



SEPTEMBER

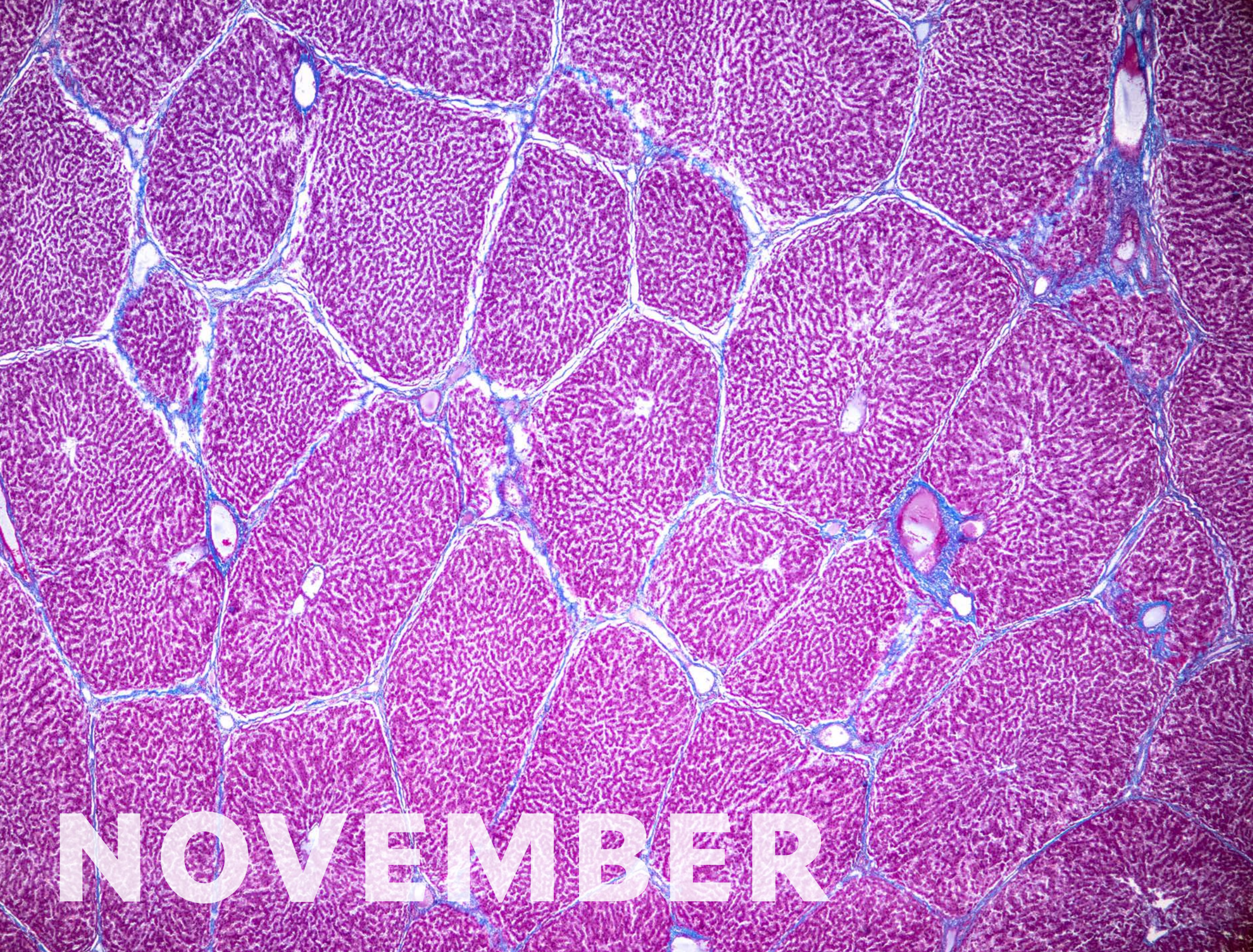
S	M	T	W	T	F	S
1	2	3	4	5	6	7
8	9	10	11	12	13	14
15	16	17	18	19	20	21
22	23	24	25	26	27	28
29	30					

NOVEMBER

S	M	T	W	T	F	S
						1 2
3	4	5	6	7	8	9
10	11	12	13	14	15	16
17	18	19	20	21	22	23
24	25	26	27	28	29	30

OCTOBER 2024

Sunday	Monday	Tuesday	Wednesday	Thursday	Friday	Saturday
29	30	1	2	3	4	5
6	7	8	9	10	11	12
13	14	15	16	17	18	19
20	21	22	23	24	25	26
27	28	29	30	31	1	2



NOVEMBER

Gastrointestinal and Liver Pathology

Gastrointestinal disorders range from common ailments such as acid reflux, colon polyps, and gallstones to chronic inflammatory diseases, infections and cancers of the colon, liver, and pancreas. **The Gastrointestinal Pathology Service at Yale** is composed of a team of nationally recognized specialists who are devoted to the accurate and timely diagnosis of diseases of the intestinal tract, liver, pancreas, gallbladder, and biliary system. We provide expert diagnostic services for biopsy and resection specimens, with an emphasis on complete, accurate, and rapid reporting. More than 90% of diagnostic biopsies are finalized within 24 hours. We analyze more than 15,000 specimens annually, with a high proportion of medically complex cases and oncologic diseases. We also provide consultation to clinical care providers, fostering the integrated management of patients.

Our pathologists are actively engaged in innovative clinical and translational research and have a firm commitment to clinical and academic excellence and quality, patient-centered care. We serve as a referral center for consultations from other institutions regionally, nationally, and internationally. Our division is supported by state-of-the-art molecular diagnostics and immunohistochemistry laboratories, providing molecular profiling of tumors and genomic analysis, furthering the pursuit of personalized medicine.

OUR TEAM

Xuchen Zhang, MD, PhD, Director
Andrea Barbieri, MD
Joanna Gibson, MD, PhD
Won Jae Huh, MD, PhD
Dhanpat Jain, MD
Yuanxin Liang, MD
Chen Liu, MD, PhD
Wenyi Luo, MD, PhD
Haris Mirza MD, PhD
Joseph Misdraji, MD
ILKe Nalbantoglu, MD
Marie Robert, MD



OCTOBER

S	M	T	W	T	F	S
		1	2	3	4	5
6	7	8	9	10	11	12
13	14	15	16	17	18	19
20	21	22	23	24	25	26
27	28	29	30	31		

DECEMBER

S	M	T	W	T	F	S
1	2	3	4	5	6	7
8	9	10	11	12	13	14
15	16	17	18	19	20	21
22	23	24	25	26	27	28
29	30	31				

NOVEMBER 2024

Sunday	Monday	Tuesday	Wednesday	Thursday	Friday	Saturday
27	28	29	30	31	1	2
3	4	5	6	7	8	9
10	11	12	13	14	15	16
17	18	19	20	21	22	23
24	25	26	27	28	29	30



DECEMBER

Center of Excellence for Women's Health

The Yale Pathology Center of Excellence for Women's Health encompasses Gynecologic and Breast Pathology clinical diagnostic services across all hospitals in the Yale New Haven Health System. The Center helps foster collaborative relationships throughout and beyond Yale School of Medicine and YNHH, focusing on the pursuit of excellence in academic Gynecologic and Breast Pathology.

LEADERSHIP

Natalia Buza, MD, Director

Gynecologic Pathology

Yale Gynecologic (GYN) Pathology Service enjoys a dynamic, high-volume subspecialty service with rigorous engagements in clinical service, translational research, and education. The Service benefits from the outstanding clinical materials afforded by Yale New Haven Hospital's world-class gynecologic oncology program. The in-house case material is supplemented by the unique and complex consult cases from all over the U.S. and around the world. This setting generates approximately 15,000 gynecological specimens annually. One of the long-term academic goals is to build an outstanding gynecological pathology program with emphasis on diagnostic tissue evaluation, oncological biomarker identification and clinical applications, and understanding the pathogenesis of various gynecological cancers. The academic environment of the GYN pathology program is highly dynamic and exciting. The faculty members are highly experienced and enjoy world-class reputations in diagnostic and investigative work in all aspects of gynecological pathology. They have expertise in the intraoperative frozen section consultation for gynecological tumors and diagnostic workup of trophoblastic disease. Senior faculty are responsible editors/authors for the 4th and 5th editions of *The WHO Classifications of Tumors of Female Reproductive Organs* in 2014 and 2020, respectively. The newly established "Center for Precision Medicine of Trophoblastic Disease" is dedicated to advancing precision medicine by leveraging the latest molecular discoveries and novel treatment options of gestational trophoblastic disease, a joint effort by the Department of Pathology and Department of Obstetrics, Gynecology & Reproductive Sciences.

OUR TEAM

Pei Hui, MD, PhD, Director
 Natalia Buza, MD
 Rita Abi-Raad, MD
 Uma Krishnamurti, MD
 Vinita Parkash, MBBS, MPH
 Tong Sun, MD, PhD
 Minhua Wang, MD, PhD, MS



NOVEMBER

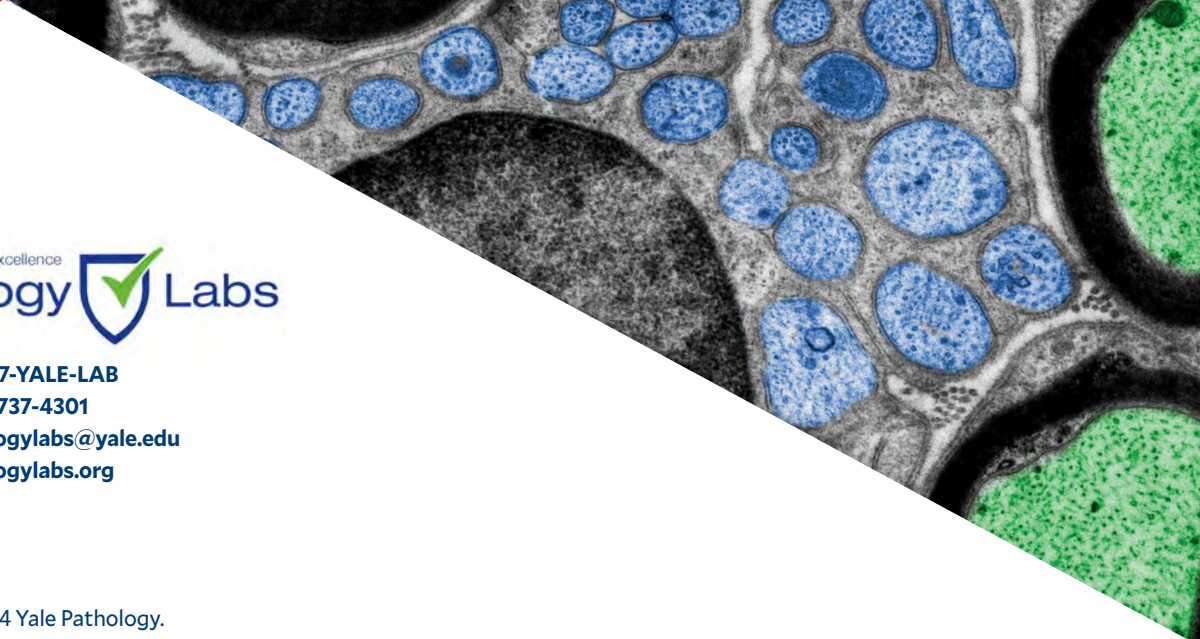
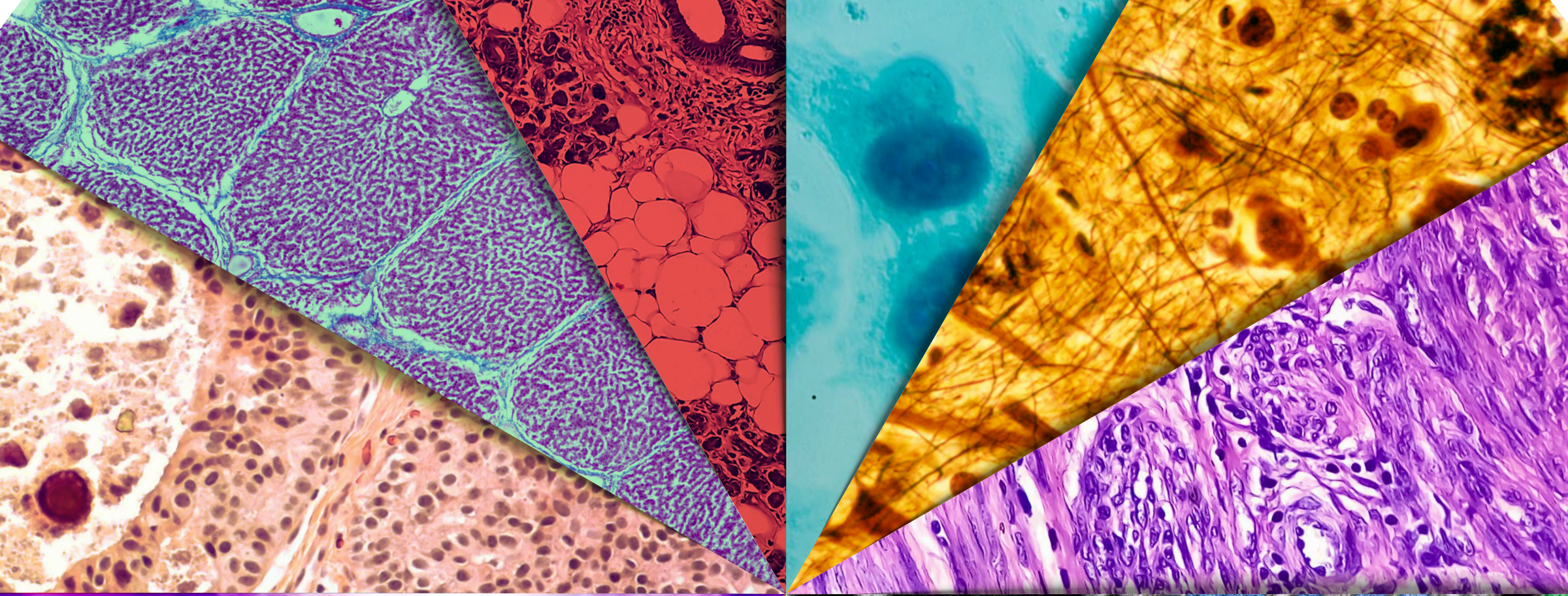
S	M	T	W	T	F	S
					1	2
3	4	5	6	7	8	9
10	11	12	13	14	15	16
17	18	19	20	21	22	23
24	25	26	27	28	29	30

JANUARY

S	M	T	W	T	F	S
				1	2	3
4	5	6	7	8	9	10
11	12	13	14	15	16	17
18	19	20	21	22	23	24
25	26	27	28	29	30	31

DECEMBER 2024

Sunday	Monday	Tuesday	Wednesday	Thursday	Friday	Saturday
1	2	3	4	5	6	7
8	9	10	11	12	13	14
15	16	17	18	19	20	21
22	23	24	25	26	27	28
29	30	31	1	2	3	4



A Legacy of Caring, a Passion for Excellence
Yale Pathology Labs

Toll Free 877-YALE-LAB

Fax 203-737-4301

Email: yalepathologylabs@yale.edu

yalepathologylabs.org

Copyright ©2024 Yale Pathology.
All rights reserved.

No part of this publication may be reproduced
or transmitted in any form without including
the prior acknowledgement of the Department
of Pathology, Yale School of Medicine.