

# DirectConnect

Inside Yale Cancer Center

October 19, 2018

## Announcements

### CCSG Funding Increase

I would like to reiterate how proud I am of the incredible accomplishment we achieved together with the renewal of our Cancer Center Support Grant (CCSG) earlier this year, and the significant increase in funding level that we received. The chart below shows the Centers who were renewed in 2018, their current funding base, and the resulting percent change from the prior CCSG funding period. You will see the incredible 73% increase in funding Yale Cancer Center received, an accomplishment that we can all be proud of, and one which we can build on in the years to come. Thank you again for your support throughout the CCSG process, and for your continued support of Yale Cancer Center and Smilow Cancer Hospital's strategic plan.

PHASE TWO FUNDING: YEAR 1 (2018)		
CENTER	NIH FUNDING BASE	% C
YALE	\$31,959,297	73
CITY OF HOPE	\$18,953,326	31
NORTHWESTERN	\$36,603,471	26
CASE WESTERN	\$32,593,733	14
THOMAS JEFFERSON	\$12,175,180	9
MICHIGAN	\$49,535,466	9
UCSF	\$68,700,455	8
WISCONSIN	\$22,008,948	5

Yale at ASTRO

from the desk of

**Charles S. Fuchs, MD, MPH**  
Director, Yale Cancer Center  
and Physician-in-Chief  
Smilow Cancer Hospital

Yale  
NewHaven  
Health  
Smilow Cancer  
Hospital

Yale CANCER  
CENTER  
A Comprehensive Cancer Center Designated  
by the National Cancer Institute

News Center

Smilow Cancer Hospital's radiation oncology team and members of Yale Cancer Center's Radiobiology and Radiotherapy Research Program will attend the ASTRO Annual meeting beginning on Monday in San Antonio. Many faculty and trainees will present their research and lead sessions, including several faculty who have leadership positions on the ASTRO planning committees. Dr. Lynn Wilson is a member of the ASTRO Board of Trustees. If you are attending the meeting, please support your colleagues by attending their presentations.

[Participation at ASTRO >>](#)

### CME Symposiums with Saint Francis

Please join us for two upcoming CME symposiums with our colleagues at Smilow Cancer Hospital at St. Francis this fall. On Friday, October 26, we will host a multidisciplinary [Breast Cancer Symposium](#) and a program on [Hematological Malignancies](#) on Friday, November 9.

### Nominations for YCC Annual Awards

Yale Cancer Center is pleased to announce our call for nominations for our annual awards in the areas of excellence in research and clinical care. Each award will be announced at the Yale Cancer Center Conclave in January. The nomination deadline for all awards is Friday, October 26th.

**Yale Cancer Center Research Prizes:** Research Prizes will be awarded in support of excellence in the areas of basic science, clinical research, translational research, and cancer prevention and control. Awards will be chosen in each area to recognize a paper that is considered to have had the greatest impact on the field this year. The applicant must be a current member of the Cancer Center and science in the publication must be cancer-focused. Please submit a PDF of your best publication (publication date from October 2017 to October 2018). To be eligible you must be either the first or last author of the publication. Email your publication to [Anna Raso](#).

**Yale Cancer Center Award for Clinical Excellence:** This award will be given to the physician who best exemplifies excellence in clinical care including super clinical skills, use of a patient- and family-centered approach to care, and inclusion of a multi-disciplinary care model. Nominee must be a current member of Yale Cancer Center. Please nominate yourself or a peer and send a brief nomination letter (one-page maximum) to [Anna Raso](#).



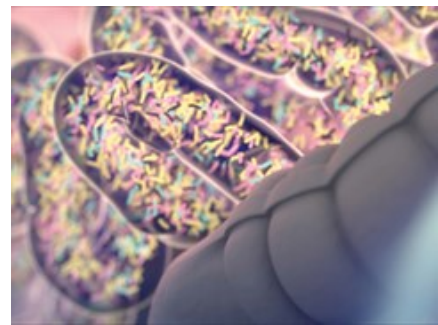
### Attacking RNA with small-molecule drugs

[Read More >>](#)



### LEAN Study

[Read More >>](#)



### Could a Better Understanding of Bacteria Prevent Colorectal Cancer?

[Read more >>](#)

**Yale Cancer Center Lifetime Achievement Award:** Yale Cancer Center recognizes the achievements of one of our senior members through our annual Lifetime Achievement award. Please send nomination suggestions for the award to [Anna Raso](#).

**Ruth McCorkle Oncology Advanced Practice Provider Award:** This annual award from Yale Cancer Center/Smilow Cancer Hospital recognizes the contributions of our Nurse Practitioner and Physician Assistant colleagues who contribute so much to oncology patient care. Please consider nominating yourself or a colleague for this award. Nominations are due for the Ruth McCorkle Award to [Cathy Lyons](#) by November 30.

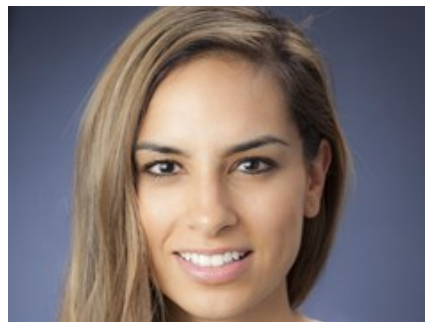
## Notables

**Catherine Lyons, MSN, RN**, Vice President for Patient Services for Smilow Cancer Hospital, was recently presented with the **2018 Doris M. Armstrong Award for Outstanding Contribution to Nursing Administration** by the **Connecticut Nurses Association (CNA)**. This award recognizes Cathy's extraordinary leadership here at Smilow, where she has made outstanding contributions to build our culture of patient and family centered care. The Doris Armstrong award is one of the Diamond Jubilee Awards established by CNA to honor individuals or organizations that have made outstanding contributions to nursing; it was presented to Cathy at a statewide dinner for the CNA last week.



Ena Williams, Chief Nursing Officer for YNHH, with Cathy Lyons.

**David Hafler, MD**, Chair of the Department of Neurology, the William S. and Lois Stiles Edgerly Professor of Neurology, Professor of Immunobiology, and a member of



**Postdoctoral Associate in Immunobiology Is Named a STAT "Wunderkind"**

[Read More >>](#)



**Cancer Treatment Improves Outcomes**

[Read More >>](#)

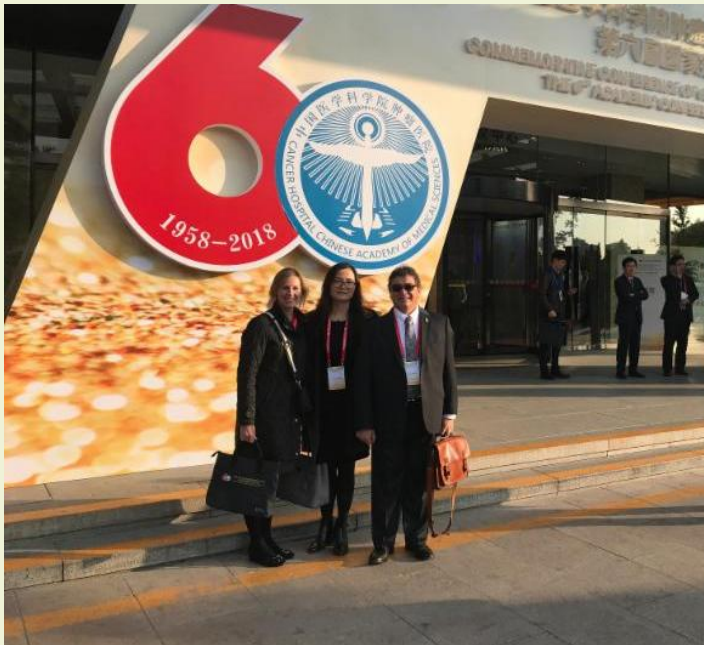


**Cancer death disparities linked to poverty, lifestyle factors nationwide**

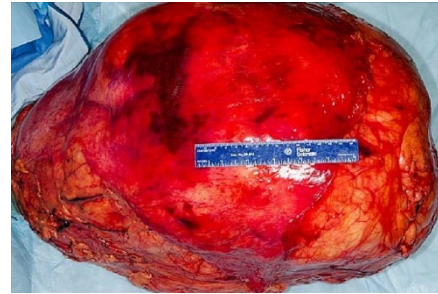
[Read More >>](#)

Yale Cancer Center's Cancer Immunology Research Program has been elected to the **National Academy of Medicine**, in recognition of his outstanding achievements in medicine.

**Melinda Irwin, PhD, MPH, Yawei Zhang, MD, PhD, MPH, and Vasilis Vasilou, PhD**, presented at the **Commemorative Conference of the 60th Anniversary of the National Cancer Hospital** and the academic conference of the **National Cancer Center** in Beijing this week. Dr. Irwin presented exciting Yale cancer prevention and control research, and Dr. Zhang shared big data research, and Dr. Vasilou presented metabolomics research.



## Employee Profile: Annette Hood

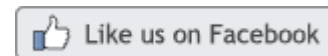


### Big, Fat Tumors: Liposarcomas Can Top 70 Pounds

[Read More >>](#)



### Join Smilow Cancer Hospital on Facebook



#### Latest Posts:

Learn more about our Endocrine Program at Smilow Cancer Hospital, which cares for patients with thyroid cancers and other cancers of the endocrine glands.

After her first visit, Kelsey said, "Walking out of the exam room, I could not have felt more confident in the path I had chosen. With such an incredibly supportive family and health care team, I had no doubt I was where I was supposed to be."



**Annette Hood, PharmD, BCACP** is a Clinical Pharmacy Specialist specializing in Oncology in the Women's Infusion Clinic on the 1st floor of Smilow Cancer Hospital. Day to day, Annette reviews chemo orders, reading through lab results of patients to monitor liver and kidney function and blood counts to confirm appropriate chemo doses. Annette also takes the time to meet

with patients who are interested in herbal therapies and natural products to ensure safety when combined with their current therapies or to answer any questions related to their treatment.

In unique circumstances, Annette also works with MAP (Medication Assistance Program) Coordinators on behalf of patients. In one recent example, a patient with endometrial cancer was prescribed IV and oral therapies, but her insurance would only approve the IV drug and not the oral. Annette enlisted the help of a MAP Coordinator who was able to work with the pharmaceutical company to provide the oral medication to this patient for free.

"I am lucky to be able to leave work every day feeling that my job is very valued," remarked Annette. "Being able to help patients and providers is a rewarding benefit of my position here." Annette is most proud that many of the patients who arrive for treatment in the women's infusion clinic have at least one of their chemo drugs prepared ahead of their arrival. "Our patient satisfaction has increased as a result, knowing that they can get right in and not have to wait." The technology that is now available is also of benefit to patients. Photos are taken during every step of the process as chemo is prepared, and this accuracy and accountability helps patients feel more comfortable.

"Annette is one of our most valued team players," says Gineesha Abraham, MSN, APRN, Advanced Practice Nurse in Breast Medical Oncology. "Her expertise in oncology medications and treatment plans makes her a very valuable asset in providing excellent care to our patients. She answers all our questions, simple and



[Read More >>](#)

Drs. Henry Park and Christin Knowlton will discuss the side effects of radiation treatment on Yale Cancer Answers today at 7:30pm on Connecticut Public Radio. Tune in to learn more, or download their podcast from our iTunes channel.



[Read More >>](#)

Yale Cancer Center's Jason Crawford, PhD, and his team have researched some of the more harmful bacterial strains of the trillions of bacterial cells that live in our digestive system to look at how they promote inflammation and colorectal cancer. They are now closer to understanding, combatting and preventing the onset of cancer in the

complex. Her warm and kind attitude makes her all the more special to us."

## #OOTB Thanks!



YCC #OUTOFTHEBLUETHANKS recently recognized **Rasny Phantharangsy**, an Accountant at Yale Cancer Center, for her amazing hard work on several recent grant submissions. Without her stellar support during the process, the grants wouldn't have been submitted on time. Thank you, Rasny!

*Yale Cancer Center's #OUTOFTHEBLUETHANKS program is a staff recognition initiative to show appreciation to employees who have exemplified an above-and-beyond effort or an outstanding contribution to the team. All nominations should be submitted to the Director's Office c/o [Anna Raso](#).*

## Funding Opportunities

### Women's Health Research at Yale Pilot Project Grants

On behalf of Dr. Carolyn M. Mazure and WHRY, we are pleased to announce the availability of Pilot Project Grants with awards starting July 1, 2019. All Yale Ladder Faculty are eligible to apply. Investigators outside the Yale community are invited to collaborate with Yale or Yale-affiliated principal investigators.

intestine, utilizing the strains of bacteria that live in our gut.



[Read More >>](#)

After receiving a diagnosis of muscle-invasive bladder cancer, Joe Weber was referred to Dr. Daniel Petrylak at Smilow Cancer Hospital for treatment through a clinical trial. Using a targeted therapy, Joe's tumors and side effects are decreasing and he is back to traveling and enjoying life with his family.



[Read More >>](#)

Twenty years ago Craig Crews, PhD, and his colleagues, launched a research project that has generated two biotech companies, hundreds of millions of dollars in investments and partnerships, a host of honors for Dr. Crews, and an FDA-approved drug that has helped more than 80,000 patients so far.

The project has also inspired drug candidates now in development against prostate cancer and breast cancer, among other diseases. Dr. Crews is confident that all of this is just the

**Letter of Intent Due:** October 25, 2018

[Learn More >>](#)

### **Human Health Exposure Analysis Resource: Targeted Exposure Analysis Laboratories**

This FOA solicits Laboratories (Lab Hubs) providing a comprehensive suite of targeted analytical services for biological samples derived from extant or ongoing human health studies in the NIH extramural research community.

**Application Deadline:** October 29, 2018

[Learn More >>](#)

### **Human Health Exposure Analysis Resource: Untargeted Exposure Analysis Laboratories**

This FOA solicits Laboratories (Lab Hubs) that can provide comprehensive measurement of the exposome using untargeted approaches (such as metabolomics using libraries enriched for environmental exposure biomarkers) for biological samples derived from extant or ongoing human health studies in the NIH extramural research community.

**Application Deadline:** October 29, 2018

[Learn More >>](#)

### **Tobacco Use and HIV in Low and Middle Income Countries (R01)**

The purpose of this FOA is to encourage research focused on tobacco use and HIV infection in low and middle income countries.

**Application Deadline:** November 1, 2018

[Learn More >>](#)

### **NCI Outstanding Investigator Award (R35 Clinical Trial Not Allowed)**

This FOA invites grant applications for the Outstanding Investigator Award (R35) in any area of cancer research.

**Application Deadline:** November 2, 2018

[Learn More >>](#)

beginning. "It's a platform technology," he said of his discovery, "meaning it could be applied to many different cancers and diseases."



[Read More >>](#)

We are proud to announce that Yale Cancer Center's Diane Krause, MD, PhD is the recipient of Yale University's 2018 Postdoctoral Mentoring Prize!


"Science is what drives me," Dr. Krause said as she accepted the honor. "That extends to what truly drives the science—the people in my lab."



[Read More >>](#)

## **Follow Yale Cancer Center on Twitter**

Follow us on 

 The Smilow Cancer Hospital Integrative Medicine team is at @espntoday to participate in their Living Well series and share information

### **NCI Outstanding Investigator Award**

This FOA invites grant applications for the Outstanding Investigator Award (R35) in any area of cancer research.

**Application Deadline:** November 2, 2018

[Learn More >>](#)

### **Developing the Therapeutic Potential of the Endocannabinoid System for Pain Treatment**

The overarching purpose of this FOA is to promote the validation of strong candidate biomarkers and endpoints for pain that can be used to facilitate the development of non-opioid pain therapeutics from discovery through Phase II clinical trials.

**Application Deadline:** November 5, 2018

[Learn More >>](#)

### **Feasibility Studies to Build Collaborative Partnerships in Cancer Research**

This FOA invites P20 planning grant applications for developing collaborative partnership between institutions serving underserved health disparity populations and underrepresented students and NCI- designated Cancer Centers (or Cancer Centers with highly integrated cancer research programs)

**Application Deadline:** November 14, 2018

[Learn More >>](#)

### **Prevention of HPV-related Cancers in HIV-infected individuals: United States-Latin American-Caribbean Clinical Trials Network: Partnership Centers**

The purpose of this FOA is to facilitate the design, conduct, and completion of clinical trials for improving prevention of human papillomavirus (HPV)-related cancers in HIV-infected individuals.


**Application Deadline:** November 15, 2018


[Learn More >>](#)


### **Cancer Prevention Clinical Trials Network (CP-CTNet): Data Management, Auditing, and Coordinating Center**


Through this FOA, the NCI proposes and will support the Cancer Prevention Clinical Trials Network (CP-CTNet)


on#reiki#massage and #healthylifestylewith employees.


 Drs. Henry Park and Christin Knowlton will discuss the side effects of#radiation treatment on Yale Cancer Answers today at 7:30pm on @wnpr. Tune in to learn more, or download their#podcast from our @iTunes channel.


 Jason Crawford, PhD researches some of the more harmful bacterial strains in our digestive system to look at how they promote inflammation &#colorectalcancer. His team is now closer to using bacteria to prevent & fight those cancers.

 After receiving a diagnosis of muscle-invasive #bladdercancer, Joe was referred to @DanielPetrylak for treatment through a #clinicaltrial. Using a targeted therapy, Joe's tumors are decreasing and he is back to traveling & enjoying life with his family.

 Listen at 1pm today to@droyherbstyale talk about highlights from this year's @AACR Cancer Progress Report.

 Read the story of @CraigMCrewsand his team's successful development of molecules called #PROTACS to fight#cancer.

 Today's Yale Cancer Answers will highlight access to #ClinicalTrials for women with #breastcancer with@AneesChagpar and Dr. Andrea Silber at 7:30pm on @wnpr

 Promising news for patients with early-stage #lungcancer. New research in @RSNA by Dr. Hyun "Kevin" Kim shows Thermal Ablation, a minimally invasive procedure, is a safe, effective treatment for the disease.



**Application Deadline:** November 15, 2018

[Learn More >>](#)

### **Physical Activity and Weight Control Interventions Among Cancer Survivors: Effects on Biomarkers of Prognosis and Survival (R21)**

This FOA encourages transdisciplinary and translational research that will identify the specific biological or biobehavioral pathways through which physical activity and/or weight control (either weight loss or avoidance of weight gain) may affect cancer prognosis and survival.

**Application Deadline:** November 16, 2018

[Learn More >>](#)

### **Diet and Physical Activity Assessment Methodology (R21 Clinical Trial Not Allowed)**

This FOA encourages innovative research to enhance the quality of measurements of dietary intake and physical activity.

**Application Deadline:** November 16, 2018

[Learn More >>](#)

### **Oncology Co-Clinical Imaging Research Resources to Encourage Consensus on Quantitative Imaging Methods and Precision Medicine**

The purpose of this FOA is to invite Cooperative Agreement applications to develop research resources that will encourage a consensus on how Quantitative Imaging (QI) methods are optimized to improve the quality of imaging results for co-clinical trials.

**Application Deadline:** November 19, 2018

[Learn More >>](#)

### **Discovery and Validation of Novel Targets for Safe and Effective Pain Treatment (R21/R01)**

This R21 NIH Exploratory/Developmental Grant supports exploratory and developmental research projects by providing support for the early and conceptual stages of pain target discovery and validation projects

**Application Deadline:** November 27, 2018

[Learn More >>](#)



Yale Cancer Center's@dskrausemdphd is the recipient of@Yale's 2018 Postdoctoral Mentoring Prize! "Science is what drives me. That extends to what truly drives the science- the people in my lab." Congratulations, Dr. Krause!

---

## **Calendar**

### **Department of Therapeutic Radiology Seminar**

**October 19; 10AM**

SHM I-116

*Impact of Neil DNA Glycosylases on Brain Function*

Magnar Bjørås, PhD

[Learn More >>](#)

### **Developmental Therapeutics Research Seminar**

**October 19; 1PM**

SHM I-304

*Precision Medicine at Yale*

Joseph Eder, MD

[Learn More >>](#)

### **Yale Cancer Answers**

**October 21; 7:30PM**

WNPR

*Pediatric Oncology*

Gary Kupfer, MD

[Learn More >>](#)

### **Yale Cancer Biology Institute Research Seminar**

**October 22; 2PM**

HOPE 110

*DNA Damage Repair, Mitosis and Genomic Instability: Elucidating multiple mechanisms by which ATR promotes genome stability*

Lilian Kabeche, PhD

[Learn More >>](#)

### **Pathology Research in Progress Talks**

**October 23; 9AM**

### **Discovery of Biomarkers, Biomarker Signatures, and Endpoints for Pain (R61/R33 Clinical Trial Optional)**

The purpose of this FOA is to promote the discovery of strong candidate biomarkers and endpoints for pain that can be used to facilitate the development of non-opioid pain therapeutics from discovery through Phase II clinical trials.

**Application Deadline:** November 27, 2018

[Learn More >>](#)

### **Analytical and/or Clinical Validation of a Candidate Biomarker for Pain**

The overarching purpose of FOA is to promote the validation of strong candidate biomarkers and endpoints for pain that can be used to facilitate the development of non-opioid pain therapeutics from discovery through Phase II clinical trials.

**Application Deadline:** November 27, 2018

[Learn More >>](#)

### **YCC K12 Calabresi Immuno-Oncology Training Program (IOTP) Scholar Awards**

We are pleased to solicit applications for the Yale Cancer Center K12 Calabresi Immuno-Oncology Training Program (IOTP) Scholar Awards for junior faculty to enhance research skills beyond the training provided during graduate and postgraduate training. Successful applicants are required to demonstrate a strong commitment to a career in cancer immunology. The two-year IOTP curriculum includes didactic and practical training in basic, translational and clinical aspects of cancer immunology research. The program also includes a required research component (either clinical or bench research, or a combination thereof). Applicants are required to identify a mentor and provide a research and mentorship proposal.

**Application Deadline:** December 1, 2018

[Learn More >>](#)

[Instructions to Apply >>](#)

### **Fusion Oncoproteins in Childhood Cancers (FusOnC2) Consortium**

TAC N107

Jackie Fretz, PhD, and TuKiet Lam, PhD

[Learn More >>](#)

### **YCC Grand Rounds**

**October 23; 12PM**

Park Street Auditorium

*Single-Molecule FRET Reveals an Additional Conformational State of the HIV-1 Envelope Glycoprotein Critical for Vaccine Design*

Walther Mothes, PhD

*Driving Transformation through Actionable Personalized Data*

Kerin Adelson, MD

[Learn More >>](#)

### **YCC Cancer Prevention and Control Research Seminar**

**October 23; 12PM**

YSPH, 101

Yang Yang-Hartwich, PhD

*The Origin of Ovarian Cancer*

[Learn More >>](#)

### **YSM Dean's Workshop**

**October 23; 1PM**

TAC Auditorium

*Yale Genome Editing Center: Innovations in Gene Targeting*

[Learn More >>](#)

### **Human and Translational Immunology Seminar**

**October 23; 4PM**

TAC N-203

*Metabolic Control of Immune Tolerance*

Andrew Wang, MD/PhD, AB

[Learn More >>](#)

### **Grand Rounds for Non-Clinicians**

**October 24; 12PM**

Park Street Auditorium

*Integrative Medicine: Readings from 'In Our Own Words' - patient essays on cancer*

This FOA, issued by the NCI, is associated with the Beau Biden Cancer MoonshotSM Initiative that is intended to accelerate cancer research.

**Application Deadline:** December 7, 2018

[Learn More >>](#)

### **NCI Research Specialist Award (R50)**

This award encourages the development of stable research career opportunities for exceptional scientists who want to pursue research within the context of an existing cancer research program, but not serve as independent investigators.

**Letter of Intent Due:** December 11, 2018

[Learn More >>](#)

### **The NCI Predoctoral to Postdoctoral Fellow Transition Award**

The purpose of this Award (F99/K00) is to encourage and retain outstanding graduate students recognized by their institutions for their high potential and strong interest in pursuing careers as independent cancer researchers.

**Internal Deadline:** December 13, 2018

[Learn More >>](#)

### **Administrative Supplements to Cancer Center Support Grants to Strengthen NCI-Supported Community Outreach Capacity through Community Health Educators of the National Outreach Network**

The purpose of this administrative supplement is to support a strengthening of community outreach capacity by working through the National Outreach Network (NON).

**Application Deadline:** December 15, 2018

[Learn More >>](#)

### **Pediatric Immunotherapy Discovery and Development Network (PI-DDN) (U54 and U01)**

This FOA is associated with the Beau Biden Cancer MoonshotSM Initiative that is intended to accelerate cancer research. The purpose is to establish centers of collaborating investigators with the goal of identifying and advancing research opportunities for translating immunotherapy concepts for children and adolescents with cancer toward clinical applications.

[Learn More >>](#)

### **Laboratory Medicine Research Seminar**

**October 24; 12PM**

CB 401

Zenta Walther, MD, PhD

*Adventures in Tumor Profiling*

[Learn More >>](#)

Smilow Screening & Prevention Program  
Informational Table

October 25; 11AM

Saint Raphael Campus

National Breast Cancer Awareness  
Month

[Learn More >>](#)

### **Pathology Grand Rounds**

**October 25; 12:30PM**

LMP1094

*A SAGA of USP22 and Gcn5 Functions  
in Development and Disease*

Sharon Dent, PhD

[Learn More >>](#)

### **Smilow Cancer Genetics and Prevention Program Seminar**

**October 25; 2:30PM**

Orchard Medical Center, Suite 107-109

[Learn More >>](#)

### **YSPH Seminar**

**October 25; 5PM**

YSPH

*Global Health Seminar: Cervical Cancer  
Prevention and Screening*

*Sangini Sheth, MD, MPH*

[Learn More >>](#)

### **Smilow Wellness Workshop**

**October 25; 5:30PM**

55 Park Street

*The Healing Power of Social Connection*

Emma Seppala

**Application Deadline:** December 17, 2018

[Learn More >>](#)

**Administrative Supplements to Cancer Center Support Grants to Strengthen the Research, Training, and Outreach Capacity of the Geographic Management of Cancer Health Disparities Program**

Through this FOA, the NCI intends to: support seven region-based "hubs" or networks to facilitate underrepresented investigator/trainee recruitment and career/professional development; provide enhanced capacity in the area of cancer health disparities research; and promote CHD research-related infrastructure development and evaluation.

**Application Deadline:** December 17, 2018

[Learn More >>](#)

---

## Recent Publications

**Lineage Specifiers in Lung Cancer Are Ahead of Their TIME.**

Connolly KA, Fitzgerald B, Joshi NS.  
Immunity. 2018 Oct 16;49(4):587-589.

[Read More >>](#)

**Regional Differences in Palliative Care Utilization Among Geriatric Colorectal Cancer Patients Needing Emergent Surgery.**

Heller DR, Jean RA, Chiu AS, Feder SI, Kurbatov V, Cha C, Khan SA.

J Gastrointest Surg. 2018 Sep 4.

[Read More >>](#)

**Hypopharyngeal Cancer Treatment Delays: Benchmarks and Survival Association.**

Morse E, Berson E, Fujiwara R, Judson B, Mehra S.  
Otolaryngol Head Neck Surg. 2018 Oct 16:194599818797605.

[Read More >>](#)

[Learn More >>](#)

**24th Therapeutic ERCP / EUS Workshop**

**October 26; 7AM**

55 Park Street

Harry Aslanian, MD, Priya Jamidar, FACG, FASGE, MBChB, Thiruvengadam Muniraj, MD, MRCP, James Farrell, MBChB, Thomas Kowalski MD, Jason Samarasena MD

[Learn More >>](#)

**Saint Francis Hospital and Medical Center 2018 Cancer Symposia**

**October 26; 8AM**

CT Convention Center

*Breast Cancer Symposium*

Regina Hooley, MD and Erin Hofstatter, MD

[Learn More >>](#)

**Smilow Screening & Prevention Program Informational Table**

**October 26; 11AM**

YNHH

*National Breast Cancer Awareness Month*

[Learn More >>](#)

**Smilow Screening & Prevention Program Informational Table**

**October 27; 1PM**

Mohegan Sun

*Sisters Journey Pink Tea*

[Learn More >>](#)

**Yale Cancer Answers**

**October 28; 7:30PM**

WNPR

*Cardio-Oncology*

Lauren Baldassarre, MD

[Learn More >>](#)

**Radiobiology and Radiotherapy Research Program**

**October 29; 11AM**

**Intraductal papillary mucinous neoplasm to pancreas ductal adenocarcinoma sequence and pancreas cancer screening.**

Farrell JJ.

Endosc Ultrasound. 2018 Sep-Oct;7(5):314-318.

[Read More >>](#)

**Proximity-enhanced SuFEx chemical cross-linker for specific and multitargeting cross-linking mass spectrometry.**

Yang B, Wu H, Schnier PD, Liu Y, Liu J, Wang N, DeGrado WF, Wang L.

Proc Natl Acad Sci U S A. 2018 Oct 15.

[Read More >>](#)

**Epidemiology of myelodysplastic syndromes: Why characterizing the beast is a prerequisite to taming it.**

Zeidan AM, Shallis RM, Wang R, Davidoff A, Ma X.

Blood Rev. 2018 Sep 21. pii: S0268-960X(18)30065-1.

[Read More >>](#)

**Perceptions of Barriers Towards Active Surveillance for Low-Risk Prostate Cancer: Results From a National Survey of Radiation Oncologists and Urologists.**

Kim SP, Gross CP, Shah ND, Tilburt JC, Konety B, Williams SB, Weight CJ, Yu JB, Kumar AMS, Meropol NJ.

Ann Surg Oncol. 2018 Oct 11.

[Read More >>](#)

**Why Travel for Complex Cancer Surgery? Americans React to 'Brand-Sharing' Between Specialty Cancer Hospitals and Their Affiliates.**

Chiu AS, Resio B, Hoag JR, Monsalve AF, Blasberg JD, Brown L, Omar A, White MA, Boffa DJ.

Ann Surg Oncol. 2018 Oct 11.

[Read More >>](#)

**Characterization of Cell Fusion in an Experimental Mouse Model of Endometriosis.**

Tal A, Tal R, Shaikh S, Gidicsin S, Mamillapalli R, Taylor HS.

Biol Reprod. 2018 Oct 9.

[Read More >>](#)

SHM I-304

*Revealing PARPi Resistance Mechanisms in the BRCA Setting*

Ryan B Jensen, PhD, and Megan C King, PhD

[Learn More >>](#)

**The Paul Sigler Lecture**

**October 29; 4PM**

Hope 110

*Molecular Mechanisms of DNA Replication and Recombination*

Wei Yang, PhD

[Learn More >>](#)

**YCC/SCH Wellness Series**

**October 29; 5:30PM**

L+M Hospital

*Minimally Invasive Surgery for Urologic Conditions*

Joseph Brito, III, MD

[Learn More >>](#)

**Pathology Research in Progress Talks**

**October 30; 9:30AM**

TAC N-107

Jon Zugazagoitia and Paul Stabach

[Learn More >>](#)

**YCC Grand Rounds**

**October 30; 12PM**

Park Street Auditorium

*Moving Forward In the New Era of Effective Melanoma Systemic Therapy*

Iman Osman, MD

[Learn More >>](#)

**Seminars in Surgical Research**

**October 31; 12PM**

BML

Sajid Khan, MD, FACS

[Learn More >>](#)

**Yale Cancer Center Seminar**

**November 1; 12PM**

**Smoking and Lung Cancer Mortality in the United States From 2015 to 2065: A Comparative Modeling Approach.**

Jeon J, Holford TR, Levy DT, Feuer EJ, Cao P, Tam J, Clarke L, Clarke J, Kong CY, Meza R.

Ann Intern Med. 2018 Oct 9.

[Read More >>](#)

**Overlapping clustering of gene expression data using penalized weighted normalized cut.**

Teran Hidalgo SJ, Zhu T, Wu M, Ma S.

Genet Epidemiol. 2018 Oct 9.

[Read More >>](#)

**Prostate cancer aggressiveness and age: Impact of p53, BCL-2 and microvessel density.**

Calvocoressi L, Uchio E, Ko J, Radhakrishnan K, Aslan M, Concato J.

J Investig Med. 2018 Oct 7.

[Read More >>](#)

FMB 115

*Beyond the usual suspects: Genomic and functional approaches to uncovering novel cancer vulnerabilities*

Srinivas R. Viswanathan, MD, PhD

[Learn More >>](#)

**Pathology Grand Rounds**

**November 1; 12:30PM**

LMP 1094

*Identifying and Reversing Mitochondrial Cardiac and Neurological Diseases*

Gerald Dorn, MD

[Learn More >>](#)

**Smilow Cancer Genetics and Prevention Program Seminar**

**November 1; 2:30PM**

Orchard Medical Center, Suite 107-109

[Learn More >>](#)

**OBGYN Grand Rounds/Special Seminar**

**November 1; 4PM**

Brady Auditorium

*100 Years of Women: Underdogs, Including RNA, Are Gaining Ground*

Setsuko K. Chambers, MD

[Learn More >>](#)

**Yale Urology Men's Health Fair**

**November 1; 5PM**

YPB, 3rd floor

[Learn More >>](#)

**Yale Cancer Center Chalk Talk**

**November 2, 2018**

SHM B-201

*Probing the Role of Alternative Splicing in Cancer Through the Study of Genitourinary Malignancies*

Srinivas R. Viswanathan, MD, PhD



[Learn More >>](#)

**Hematology Research Seminar Series**

**November 2; 12PM**

Brady Auditorium

*Patterns of Care and Outcomes Among  
Older Adults with Myeloproliferative  
Neoplasms (MPNs)*

Nikolai Podoltsev, MD, PhD

[Learn More >>](#)

---

**Submissions**

Please submit your recent publication  
and grant announcements to:

**Renee Gaudette**

Director, Public Affairs and  
Communications