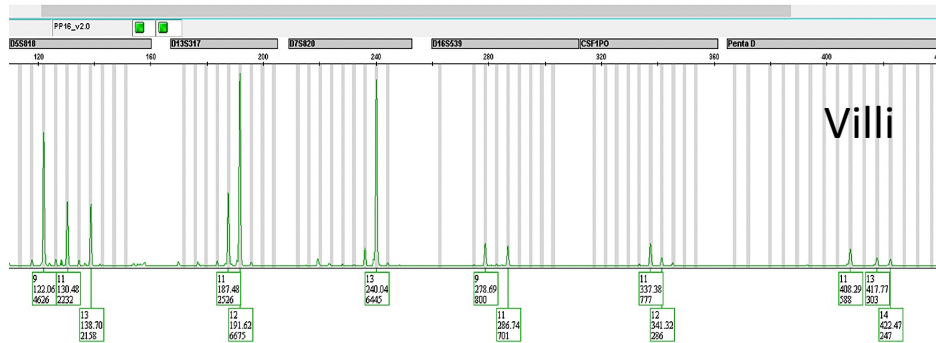
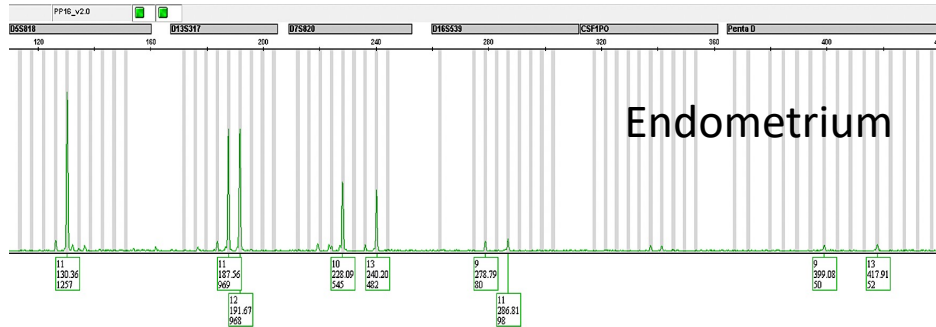
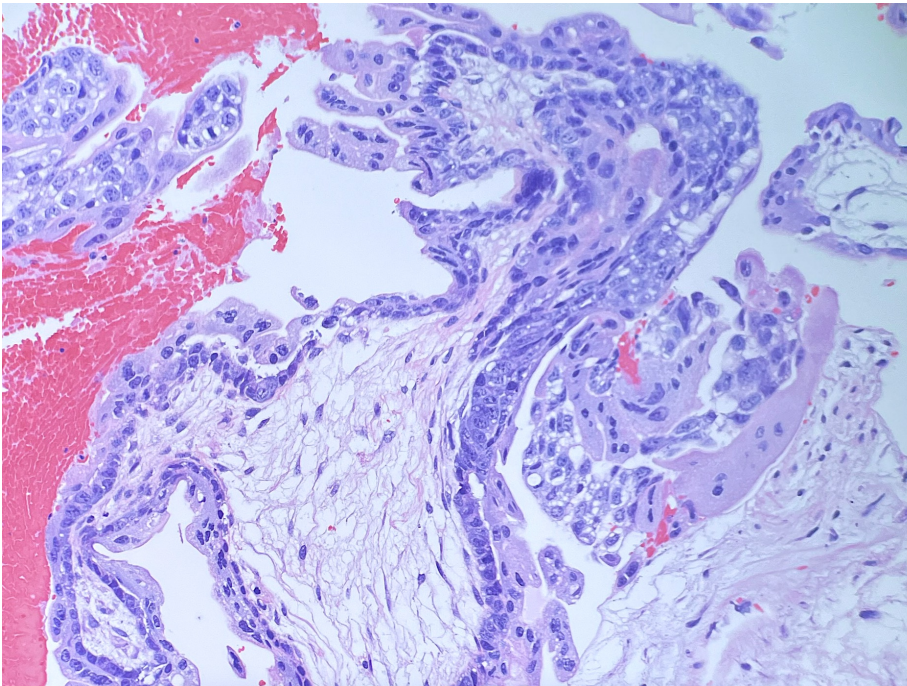
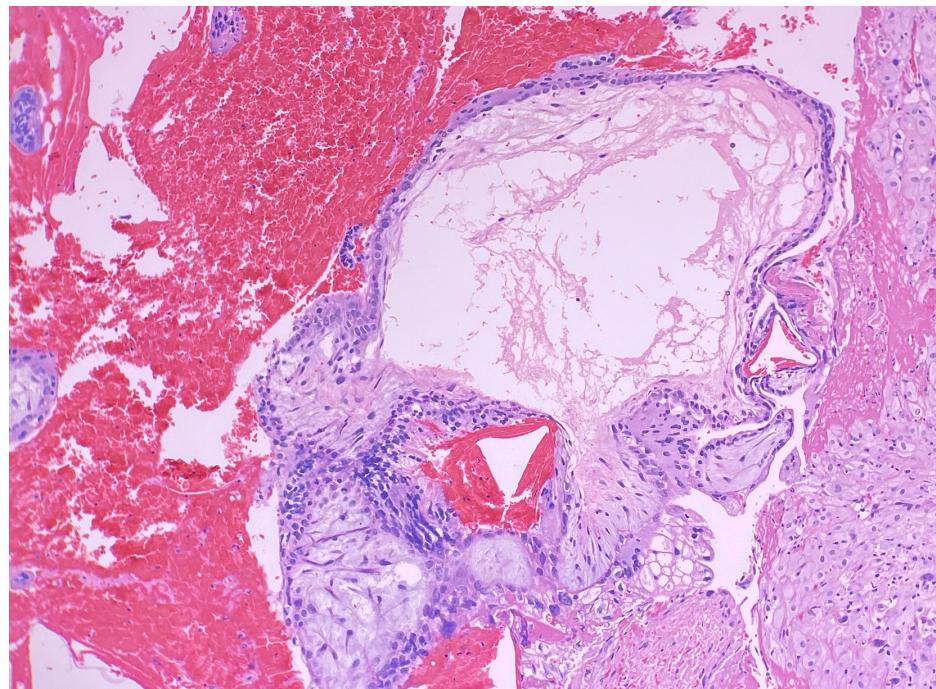
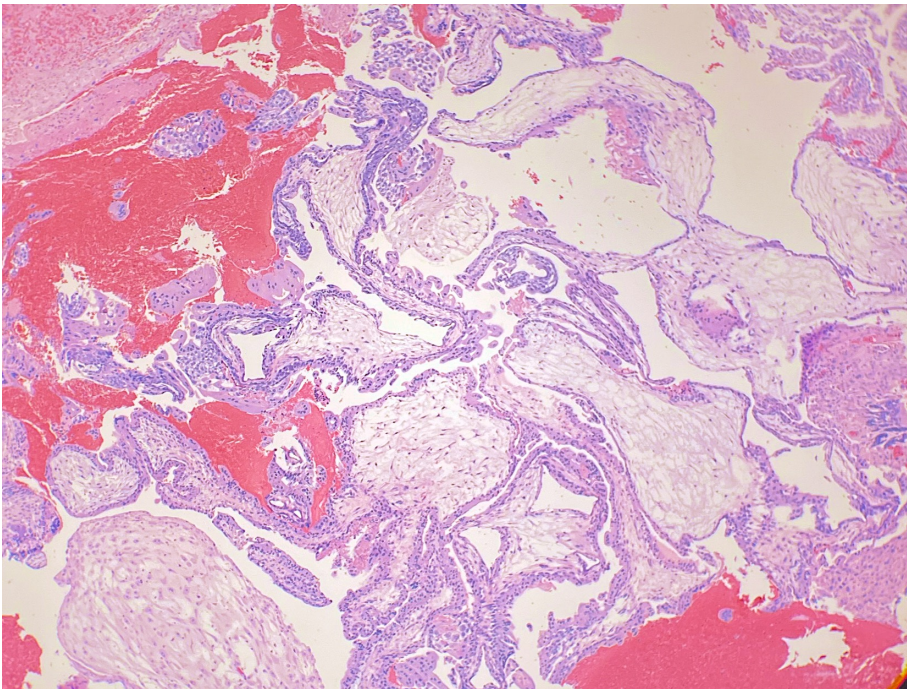


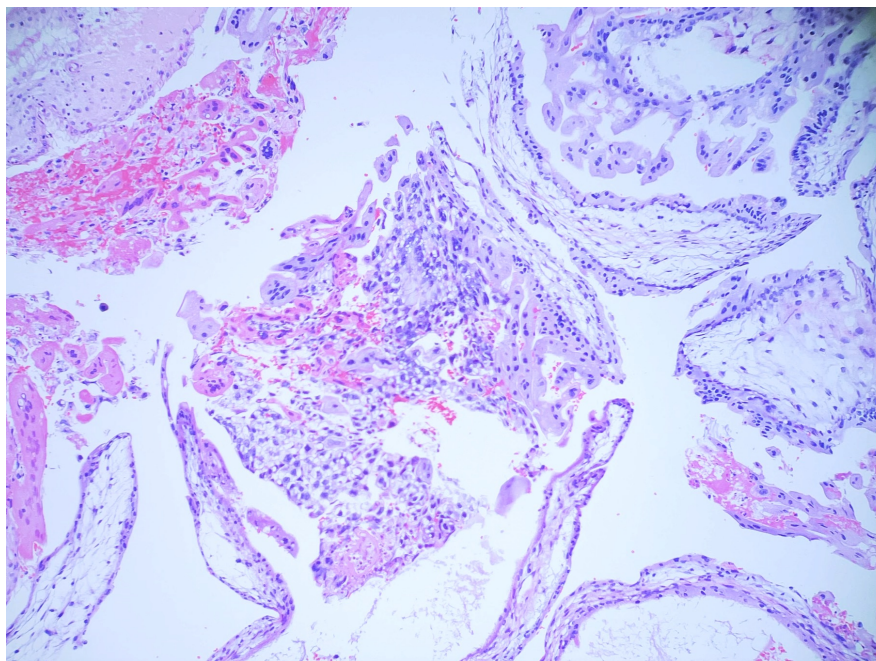
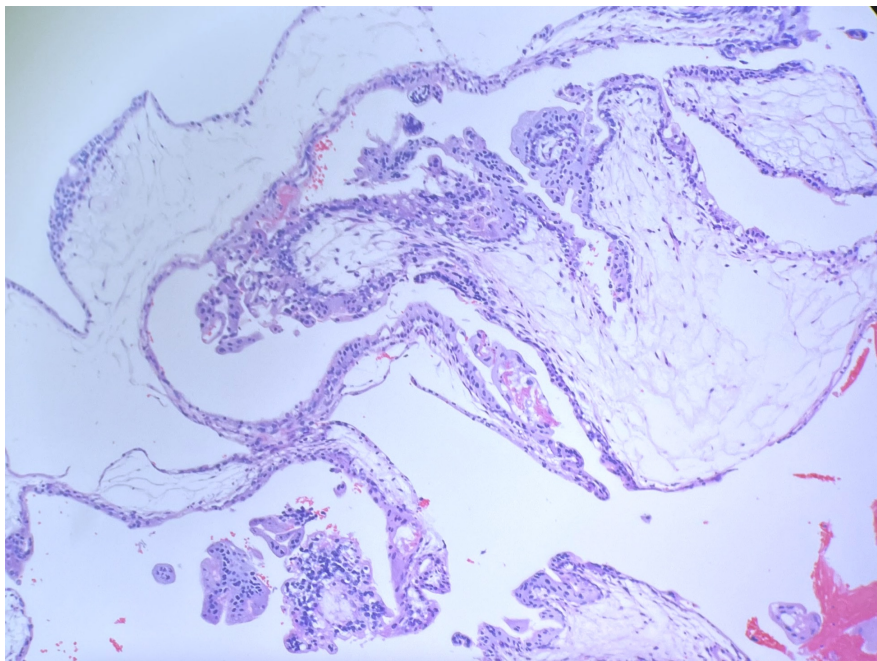
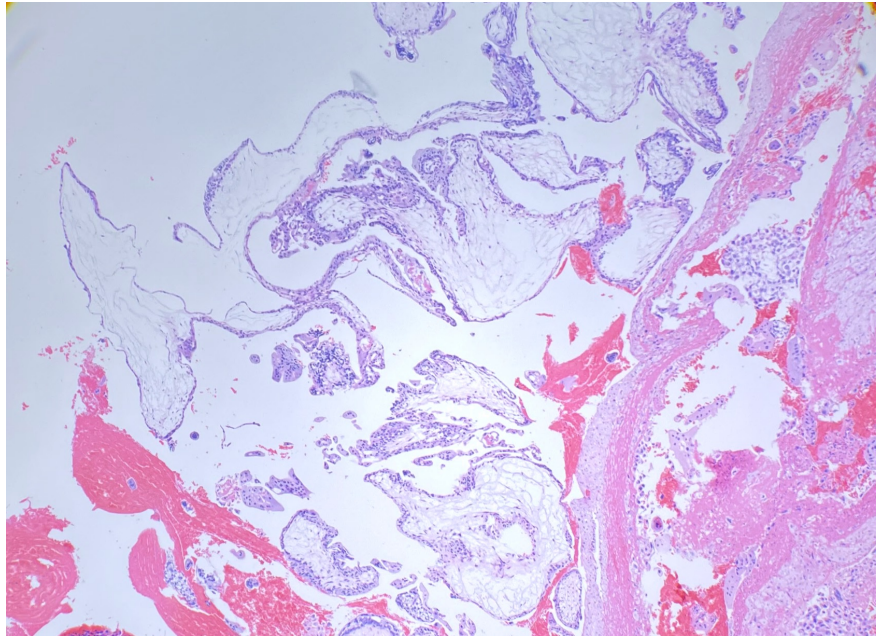
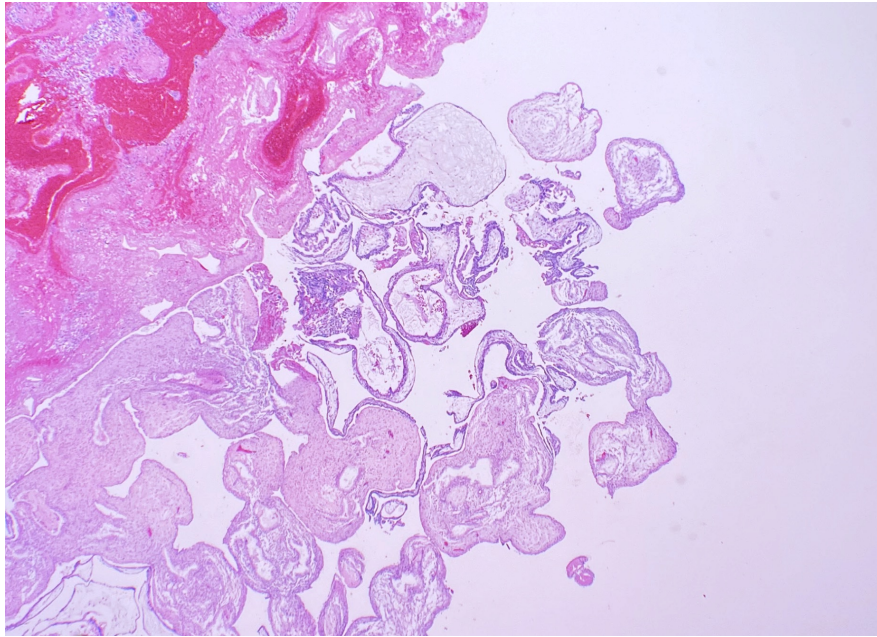


20-year-old woman presenting with threatened abortion.

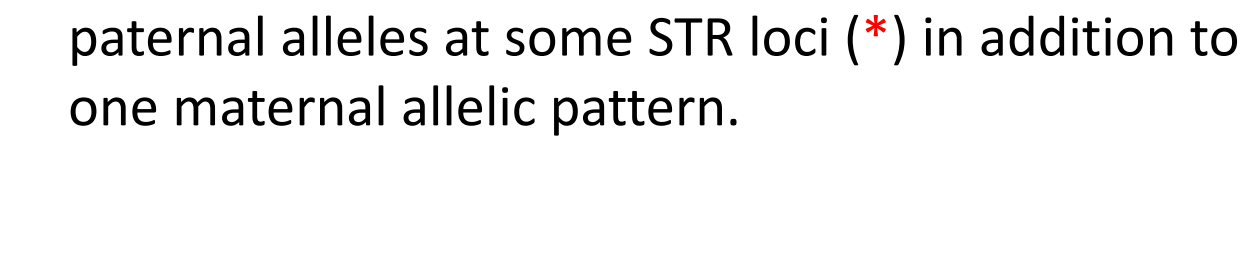
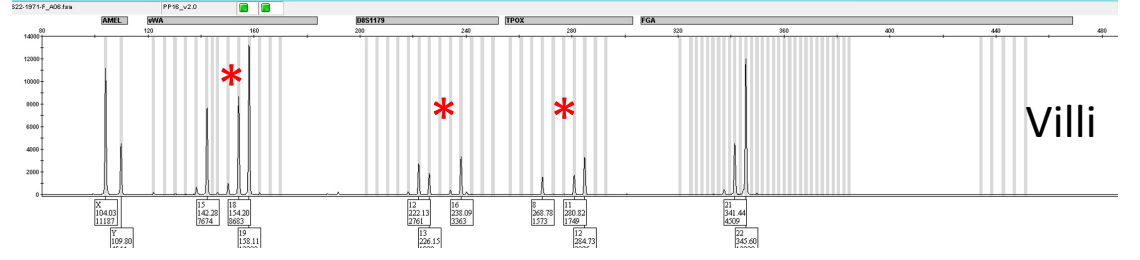
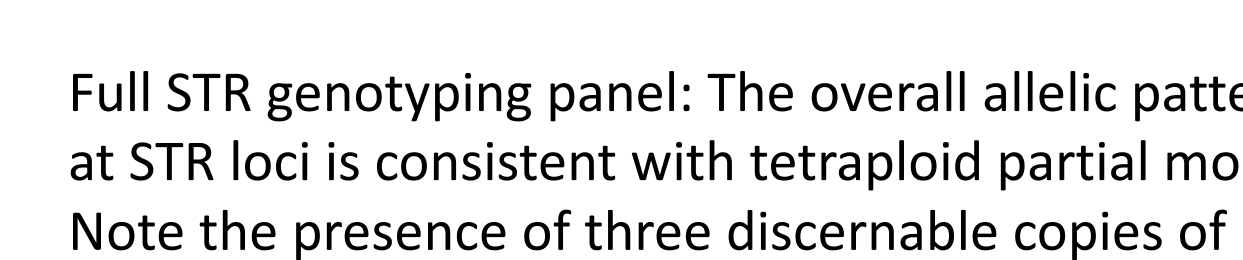
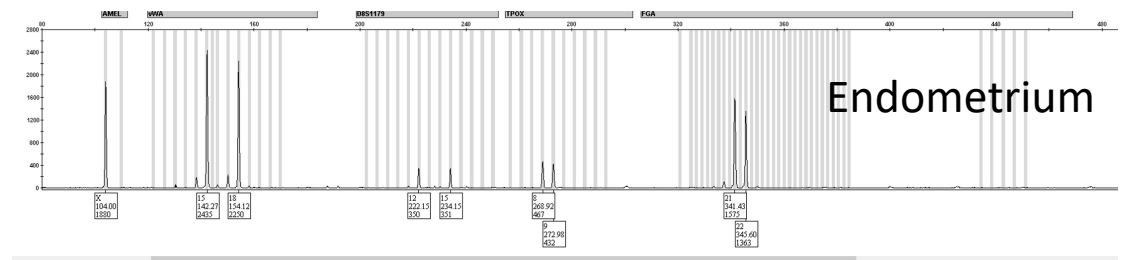
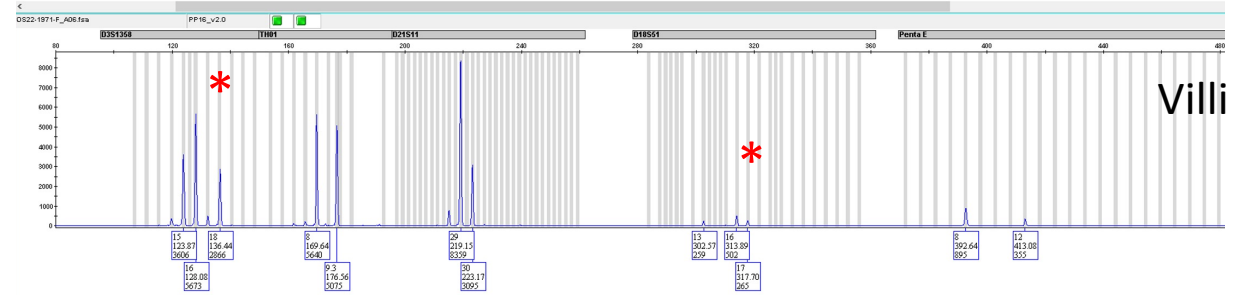
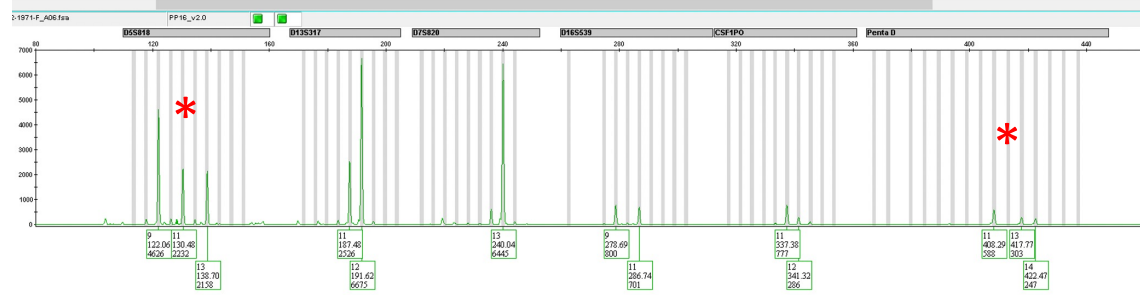
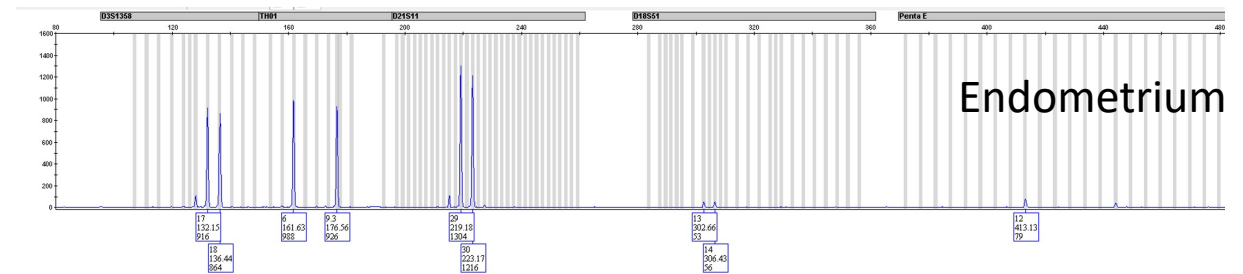
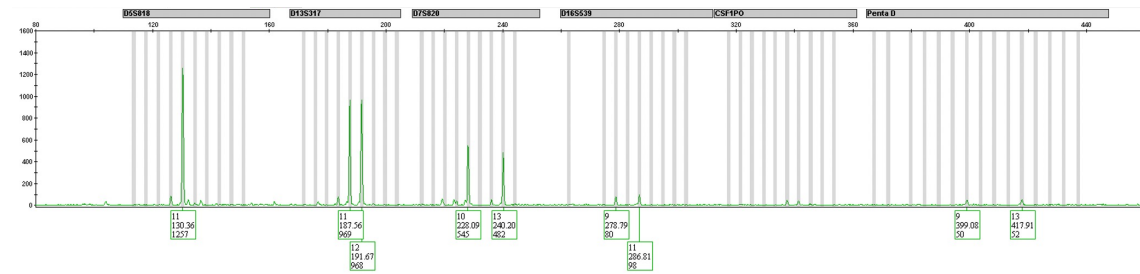


Diagnostic Options

- A: Dispermic complete mole
- B: Dispermic partial mole
- C: Monospermic partial mole
- D. Tetraploid partial mole



Additional images



Full STR genotyping panel: The overall allelic pattern at STR loci is consistent with tetraploid partial mole. Note the presence of three discernable copies of paternal alleles at some STR loci (*) in addition to one maternal allelic pattern.

Case Summary

The chorionic villi show abnormal configurations and marked hydropic changes with cistern formation. Abnormal villous trophoblastic proliferation is also present. The morphological features are suspicious for partial mole. STR genotyping demonstrates an overall STR profile consistent with triandric-monogynic genome (three allelic copies of paternal origin and one copy of maternal allele) of the chorionic villi.

Final Diagnosis: Tetraploid Partial Mole