

# Consultation Service

## For professionals caring for young individuals experiencing psychosis

This free consultation resource is for Connecticut-based clinicians, administrators and leaders of healthcare systems who would like to consult about their continuing care of young people with recent onset psychosis between the ages of 16 and 35.

### Consultation related to :

- Medication
- Psychotherapy
- Education/employment support
- Family services
- Building a new service
- Quality improvement



Fill out our form!

[bit.ly/SLC-consult](https://bit.ly/SLC-consult)

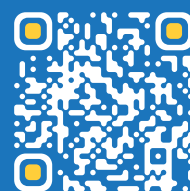
If you are outside Connecticut, please contact [stepconsult@yale.edu](mailto:stepconsult@yale.edu)



# Consultation Service

## For professionals caring for young individuals experiencing psychosis

This free consultation resource is for Connecticut-based clinicians, administrators and leaders of healthcare systems who would like to consult about their continuing care of young people with recent onset psychosis between the ages of 16 and 35.



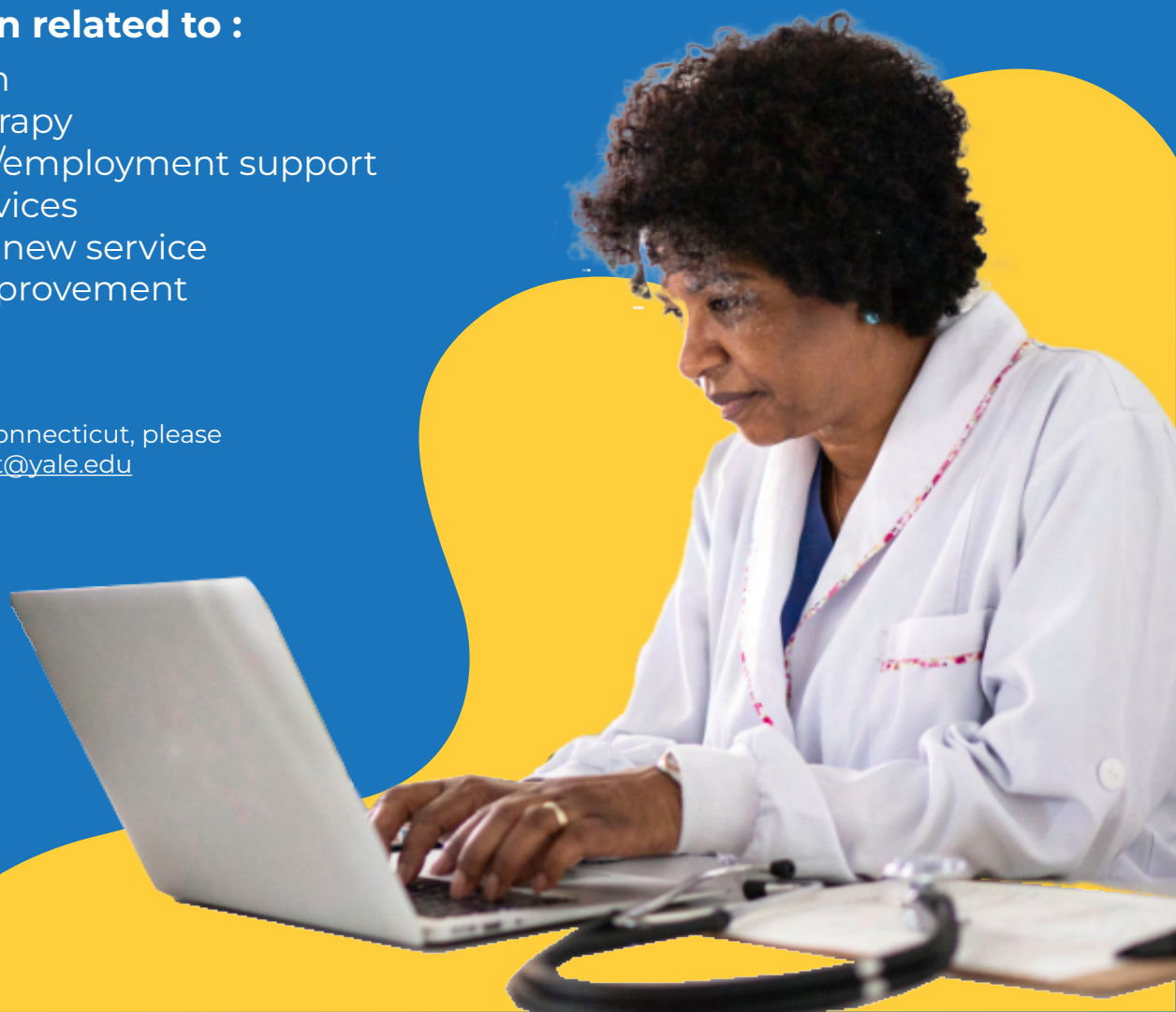
Fill out our form!

[bit.ly/SLC-consult](https://bit.ly/SLC-consult)

### Consultation related to :

- Medication
- Psychotherapy
- Education/employment support
- Family services
- Building a new service
- Quality improvement

If you are outside Connecticut, please contact [stepconsult@yale.edu](mailto:stepconsult@yale.edu)



# Consultation Service

## For professionals caring for young individuals experiencing psychosis

This free consultation resource is for Connecticut-based clinicians, administrators and leaders of healthcare systems who would like to consult about their continuing care of young people with recent onset psychosis between the ages of 16 and 35.

### Consultation related to :

- Medication
- Psychotherapy
- Education/employment support
- Family services
- Building a new service
- Quality improvement



Fill out our form!

[bit.ly/SLC-consult](https://bit.ly/SLC-consult)

If you are outside Connecticut, please contact [stepconsult@yale.edu](mailto:stepconsult@yale.edu)





# Consultation Service

## For professionals caring for young individuals experiencing psychosis

This free consultation resource is for Connecticut-based clinicians, administrators and leaders of healthcare systems who would like to consult about their continuing care of young people with recent onset psychosis between the ages of 16 and 35.



Fill out our form!

[bit.ly/SLC-consult](https://bit.ly/SLC-consult)

### Consultation related to :

- Medication
- Psychotherapy
- Education/employment support
- Family services
- Building a new service
- Quality improvement

If you are outside Connecticut, please contact [stepconsult@yale.edu](mailto:stepconsult@yale.edu)

