

February 19, 2016

Announcements

Janina Longtine, MD Joins Yale and Smilow

Please welcome Janina A. Longtine, MD to our faculty as Vice Chair of Pathology and Laboratory Medicine and Director of Molecular and Genomic Diagnostics at Yale School of Medicine and Director of our Tumor Profiling Laboratory for Smilow Cancer Hospital. Dr. Longtine joins us from Mount Sinai Hospital where she served as Vice Chair of Molecular Pathology and Genetics for the department of pathology. In addition, she recently served as President of the Association for Molecular Pathologists (2014-2015 term).



Dr. Longtine has considerable expertise and leadership in molecular pathology, and her vision will place patient management and individualized cancer care at the forefront of our Tumor Profiling Laboratory. In her new role, she will also be working to more cohesively integrate various molecular diagnostic services offered by Pathology, Laboratory Medicine, and the Center for Genome Analysis at West Campus.

Notables

from the desk of

Peter G. Schulam, MD, PhD

Director, Yale Cancer Center
and Physician-in-Chief,
Smilow Cancer Hospital (Interim)



Recent News

Read recent articles featuring experts from Yale Cancer Center

[News Center >>](#)

LATEST ARTICLES:



Specialized Care for Cancer Survivors

[Read More >>](#)

Dr. Alfred Bothwell, a member of Yale Cancer Center's Cancer Immunology Research Program, received a grant from the **Pardee Foundation** to fund the *Development of human lung cancer metastasis model in mice*. The goal of Dr. Bothwell's research project is to establish a humanized mouse model of human lung cancer and test the hypothesis that Dkk-1 is a driver of cancer metastasis.

Dr. Cary Gross and **Dr. Sarah Mougalian**, members of Yale Cancer Center's Cancer Prevention and Control Program, received a grant from the **National Comprehensive Cancer Network (NCCN) Oncology Research Program**, in collaboration with Pfizer, to study *Optimizing Patient Engagement in Reporting Outcomes among Women with Metastatic Breast Cancer*. The funding will support a tool to track patient reported outcomes in women with metastatic breast cancer at Smilow Cancer Hospital.

Research in the News

Researchers link lipids to one third of myelomas

Yale Cancer Center researchers have identified a link between lipids and the origin of a third of all myelomas, a type of cancer affecting plasma cells. The findings, published Feb. 10 in the [New England Journal of Medicine](#), could fundamentally change the way this cancer and others are treated.

Multiple myeloma is a cancer involving the growth of plasma cells, which are immune cells that make antibodies to fight infection. Uncontrolled growth of these cells leads to anemia, bone pain, kidney problems, Gaucher disease, and myeloma. Despite recent advances, including several new FDA-approved therapies for myeloma, the disease remains incurable, and nearly all patients eventually die from it. The causes of this cancer have remained a mystery until now.

[Read More >>](#)

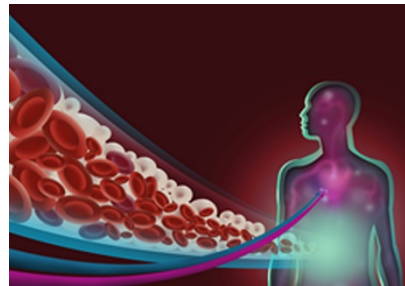
Yale study examines evolution of cancer

A novel Yale study answers age-old questions about how cancers spread by applying tools from evolutionary biology. The new insights will help scientists better understand the genetic origins of tumor metastases, and lead to more effective targets for treatment, said the researchers.



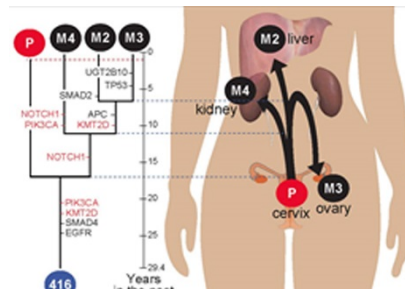
My Turn: Cancer patients must demand exercise

[Read More >>](#)



Researchers link lipids to one third of myelomas

[Read More >>](#)



Yale study examines evolution of cancer

[Read More >>](#)

The study, led by associate professor of public health (biostatistics) Jeffrey Townsend, was published on Feb. 8 by the Proceedings of the National Academy of Sciences.

Scientists have long thought that cancer is an evolutionary process that involves cells acquiring mutations that replicate and persist over time, gaining an advantage over normal cells. But questions remained about the timing and course of tumor progression.

To illuminate the process, the Yale team sequenced normal, primary, and metastatic tumor tissue from multiple individuals, including subjects with a range of cancer types. Applying the latest methodologies from evolutionary biology, the researchers mapped genetic mutations on the "tree" of cancer evolution occurring within each patient. Much like maps of species evolution, their analysis revealed genetic relationships and tumor chronology.

[Read More >>](#)

Employee Profile: David Andrew

Having been diagnosed with leukemia as a child, and with many family members affected by cancer, Dave Andrew, RN, OCN, BMTCN was drawn from a career in business to oncology nursing. He began his nursing career in the Smilow hematology and bone marrow transplant inpatient unit. When he came to the Smilow Cancer Hospital Care Center at Waterbury two years ago, he welcomed the challenge of caring for patients with all different cancer types.



A large part of Dave's role is guiding patients through the process of diagnosis and treatment. He informs them of certain side effects they can expect, teaches them about chemotherapy regimens, and helps them cope with changes they may experience along the way. He also arranges for infusions to take place at local hospitals if a patient isn't able to travel to Smilow. Dave works with physicians to triage patient calls, and manages any issues over the phone when possible.



Dr. Simon Kim profiled by ASCO's Conquer Cancer Foundation

[Read More >>](#)

Join Yale Cancer Center on Facebook

Like us on Facebook 

LATEST POSTS:

"When I was in fifth grade, my grandmother was diagnosed with breast cancer. I was very close to my grandmother and she lived a long life.... My connection to cancer has spread to my father-in-law, an aunt and uncle on my mother's side, 6 cousins, and 6 friends. Unfortunately, my circumstances aren't that unusual. It seems as if cancer has become a pervasive visitor to almost everyone. My hope is for a cure in my lifetime!"
- A cancer caregiver in Connecticut



"My hope is for a cure in my lifetime!"

"We are with patients from diagnosis throughout their treatment," said Dave. "This makes things easier for the patient, and also easier for us because we are able to build trust, and when patients feel comfortable, they are more likely to share side effects so that we can help them the best way we can."

Dave is also a designated Magnet Champion for YNHH. A Magnet designated hospital is an organization that has been recognized by the American Nurses Credentialing Center (ANCC) after demonstrating excellence in patient care in more than 35 areas of focus. In this role Dave motivates staff by serving as a liaison for education, raising awareness, and celebrating nursing excellence.

Lisa Shomsky, RN, Clinical Program Manager for the Smilow Care Centers, commented, "Dave has a great deal of knowledge and experience working with oncology patients in the ambulatory setting. His calm, professional demeanor puts patients at ease, and he takes time getting to know them on a personal level. The consistent message heard from his peers is that 'patients love him.' In addition, he often covers staff absences at other Smilow Care Centers, and does so willingly and without complaint! Dave has been a wonderful addition to the Smilow Cancer Hospital Care Center at Waterbury."

Funding and Award Opportunities

All current funding opportunities are archived on the Yale Cancer Center website, and searchable by topic, funding agency, and due date. Please check the site often for new opportunities. [Learn More >>](#)

Connecticut Breast Health Initiative

Our mission is to make a difference locally in the fight against breast cancer through support, education and research. To accomplish this mission, CT BHI plans on funding a diversified portfolio of clinical/ translational research with emphasis on programs that have not yet qualified for federal grants targeting breast cancer cause and survival.

Letter of Intent Deadline: March 1, 2016

[Learn More >>](#)

[Read More >>](#)

After taking care of both her grandmother and mother, Irene was diagnosed with breast cancer. Through her successful treatment at Smilow Cancer Hospital, Irene learned to love herself and to pursue her dreams. Along with dozens of other cancer survivors, doctors, caregivers, and the Fairfield Children's Choir, Irene celebrated personal triumph over cancer in a flash mob in Union Station. Watch and share Irene's message, a Celebration of Life.



[Read More >>](#)

Congratulations to Drs. Harriet Kluger, Jill Lacy, Michal Rose, Barbara Burtness, and Patricia LoRusso on achieving the position of Professor of Medicine (Medical Oncology)! Yale Cancer Center celebrated the promotion of these five faculty members last month at a dinner hosted by Dr. Roy Herbst, Chief of Medical Oncology.

"I am proud to have had the opportunity to recognize and celebrate the accomplishments of these five physicians and leaders in our section, each of whom have made immeasurable contributions to our patient care, research, education priorities," Dr. Herbst said.



[Read More >>](#)

Breast Cancer Alliance Exceptional Project Grants 2017

- For clinical doctors and research scientists whose primary focus is breast cancer.
- Candidates are eligible at any stage of their careers.
- The proposed research must be directly related to the field of breast cancer.
- Areas of relevant research may include, but are not limited to: diagnosis, etiology, immunology, genetics, therapies, prevention, and clinical studies.

Internal Deadline: March 2, 2016

[Learn More >>](#)

Society for Immunotherapy of Cancer Fellowships

In concert with the Society's mission to improve cancer patient outcomes through the development and application of cancer immunotherapy, SITC is presenting to young investigators the following **one-year fellowship opportunities**, which were made possible through the generosity and partnership of the organizations listed below.

- 2016 SITC-AstraZeneca Cancer Immunotherapy Clinical Fellowship in Non-Small Cell Lung Cancer (NSCLC)
- 2016 SITC-EMD Serono Cancer Immunotherapy Clinical Fellowship
- 2016 SITC-Genentech Postdoctoral Cancer Immunotherapy Basic Fellowship in Related Biomarkers
- 2016 SITC-Genentech Postdoctoral Cancer Immunotherapy Clinical Fellowship in Related Biomarkers or Mechanism of Action (MOA)

Application Deadline: March 7, 2016

[Learn More >>](#)

Gordon and Betty Moore Foundation: Moore Inventor Fellows

Purpose:

- For inventors who create new tools and technologies with a high potential to accelerate progress in the Foundation's areas of interest: natural science, environmental conservation, and patient experience and care.

16-year old Madeline Kutler, whose mother is a breast cancer survivor, is raising awareness about breast cancer for her Girl Scout Gold Award, the highest award in girl scouting. In addition to organizing a town-wide lecture on breast cancer this past October, Maddie is collecting handmade hats (Hats for Happiness) to donate to the women's chemotherapy suite at Smilow Cancer Hospital.



Maddie Kutler brings comfort & warmth to cancer patients

[Read More >>](#)

Without a primary care doctor at the age of 23, Josh Scussell visited a walk-in clinic when he noticed a lump in his groin area. After a biopsy revealed that Josh had Non-Hodgkins T Cell Lymphoma, his physician at Smilow Cancer Hospital prescribed CHOP, an aggressive form of chemotherapy. Although the few years of treatment and transplants would be very challenging for Josh, his girlfriend (and now wife) Heather was always by his side.

Read Josh and Heather's courageous story



[Read More >>](#)

- The Foundation will support ideas at an early stage that could lead to proof-of-concept or advance an existing prototype toward application.

Internal Application Deadline: March 7, 2016
[Learn More >>](#)

Damon Runyon-Sohn Pediatric Cancer Fellowship Award

This award provides funding to basic scientists and clinicians who conduct research with the potential to significantly impact the prevention, diagnosis or treatment of one or more pediatric cancers. Applicants are not required to be pediatricians or members of pediatric departments; however, the proposed research must have direct relevance to one or more pediatric cancers. This four year award is \$50,000 per year for basic scientists, and \$60,000 per year for physician scientists. In addition, an annual \$2,000 expense allowance is awarded to the laboratory in which the Fellow is working and can be used by the Fellow for his/her educational and scientific expenses. The Foundation also provides a Dependent Child Allowance of \$1,000 per child per year. The award may not be used for institutional overhead or indirect costs.

Application Deadline: March 16, 2016
[Learn More >>](#)

Schwartz Center Compassionate Caregiver of the Year Award

Each year the Schwartz Center for Compassionate Healthcare honors extraordinary health care professionals with the National Compassionate Caregiver of the Year (NCCY) Award. The award recognizes caregivers from across the country who exemplify characteristics of compassionate care, including: communicating sensitively with patients and loved ones; listening carefully, showing empathy and instilling hope; respecting patients' values, culture, choices and decisions; and understanding the significance of patients' families and communities.

An individual health care professional or team that works directly with patients in any U.S. health care setting is eligible for this prestigious national award.

Application Deadline: March 31, 2016
[Learn More >>](#)

Prostate Cancer Foundation Challenge Awards


Challenge awards are awarded to investigations of metastatic, lethal prostate cancer. These awards will be funded depending on the level of innovation in applications received. High risk, currently unfunded projects are most desired.


Application Deadline: April 29, 2016


Follow Yale Cancer Center on Twitter


Follow us on  **twitter**


LATEST TWEETS:

 MT @aneeschagpar talks w/ @medpagetoday about reexcision rates BCS Patients Tend to Undergo More Breast Surgery #bcm

 We're working to keep promising #cancer compounds from perishing in the Valley of Death
<http://bit.ly/1SxaiDg>

 ASCB Celldance 2015: "Spying on Cancer Cell Invasion"
<https://youtu.be/KV5iDXZaGX8> via @YouTube

 Why is sex and gender analysis crucial in health research? You don't know the half of it.
<http://bit.ly/whrabg>

 Via @NPR: Inside A Doctor's Mind At The End Of His Life
<http://n.pr/1mqE6F2>

Closer to Free

closer to free

The fund to advance cancer research and enhance patient care

Calendar

February 19; 10AM

YCC Section of Hematology Seminar

Giarman Room, SHM 201B

[Learn More >>](#)

Prostate Cancer Foundation Young Investigator Award

PCF Young Investigator Awards will be three (3) years in duration and will provide \$75,000 per year. The award funds may be used flexibly to advance the career and research efforts of the awardee. Every PCF Young Investigator is required to be under the direct supervision of a mentor. Applicants should be within six-years following completion of a professional degree or clinical training such as MD, PhD, MD-PhD, DSc, ScD, DDM, DDS, DMD, MBBS or equivalent and hold the title of Postdoctoral Fellow, Instructor, Research Associate, Assistant Professor, or equivalent.

Application Deadline: April 29, 2016

[Learn More >>](#)

Damon Runyon Innovation Award

The Damon Runyon-Rachleff Innovation Award is designed to provide support for the next generation of exceptionally creative thinkers with "high-risk/high-reward" ideas that have the potential to significantly impact our understanding of and/or approaches to the prevention, diagnosis or treatment of cancer.

The Innovation Award is specifically designed to provide funding to extraordinary early career researchers who have an innovative new idea but lack sufficient preliminary data to obtain traditional funding. It is not designed to fund incremental advances. The research supported by the award must be novel, exceptionally creative and, if successful, have the strong potential for high impact in the cancer field.

Application Deadline: July 1, 2016

[Learn More >>](#)

Recent Publications

Debriefing as an Essential Part of Keeping Ourselves Healthy.

McCorkle R.

Cancer Nurs. 2016 Mar-Apr;39(2):163-4.

[Read More >>](#)

Stereotactic radiotherapy or surgery for early-stage non-small-cell lung cancer.

Katz MS, Husain ZA.

Lancet Oncol. 2016 Feb;17(2):e41-2.

CART Cell Therapy in B-Cell Malignancies

Alfonso Quintas, MD

[Read More >>](#)

February 19; 12PM

YCC Research in Progress Seminar

Park Street Auditorium

Some First Steps Towards Immunophenotyping Non-Invasive Bladder Cancers

Michael Hurwitz, MD, PhD

[Read More >>](#)

February 21; 6PM

Yale Cancer Center Answers

WNPR

Healthcare and Preventative Cancer Screenings

Reza Yaesoubi, PhD

[Read More >>](#)

February 22; 11AM

YCC Radiobiology and Radiotherapy Research Program Seminar

SHM I-304

Nucleotide Excision Repair and the 2015 Chemistry Nobel Prize: The Yale Connection

W. Dean Rupp, PhD

[Read More >>](#)

February 22; 1:30PM

Yale Cancer Biology Institute Seminar

Hope 110

Common Logic: Metamorphosis, T Cell Differentiation and Erythropoiesis

Daryl Ewald Klein, PhD

[Read More >>](#)

February 22; 4PM

Employee and Family Resources

Park Street Seminar Room, 202

Mindfulness Solutions: A Class for Caregivers

[Read More >>](#)

Receipt of Care Discordant with Practice Guidelines is Associated with Compromised Overall Survival in Nasopharyngeal Carcinoma.

Schwam ZG, Sosa JA, Roman S, Judson BL.
Clin Oncol (R Coll Radiol). 2016 Feb 8.

[Read More >>](#)

Cost-effectiveness assessment of lumpectomy cavity boost in elderly women with early stage estrogen receptor positive breast cancer receiving adjuvant radiotherapy.

Lester-Coll NH, Rutter CE, Evans SB.
Radiother Oncol. 2016 Feb 8.

[Read More >>](#)

New Strategies in Breast Cancer: Immunotherapy.

Pusztai L, Karn T, Safonov A, Abu-Khalaf MM, Bianchini G.

Clin Cancer Res. 2016 Feb 11.

[Read More >>](#)

Genomic characterization of sarcomatoid transformation in clear cell renal cell carcinoma.

Bi M, Zhao S, Said JW, Merino MJ, Adeniran AJ, Xie Z, Nawaf CB, Choi J, Beldegrun AS, Pantuck AJ, Kluger HM, Bilgüvar K, Lifton RP, Shuch B.

Proc Natl Acad Sci U S A. 2016 Feb 10.

[Read More >>](#)

Clonal Immunoglobulin against Lysolipids in the Origin of Myeloma.

Nair S, Branagan AR, Liu J, Boddupalli CS, Mistry PK, Dhodapkar MV.

N Engl J Med. 2016 Feb 11;374(6):555-61.

[Read More >>](#)

Exosomes: potential for early detection in pancreatic cancer.

Lu L, Risch HA.

Future Oncol. 2016 Feb 10.

[Read More >>](#)

[Read More >>](#)

February 23; 9:30AM

Pathology Research in Progress Talks

TAC N-107

TBA

Alexander Panaccione

[Read More >>](#)

February 23; 12PM

Yale Cancer Center Grand Rounds

Park Street Auditorium

Discovery of Oncoprotein-Directed Regulatory Pathways Using Functional Genomics

Michael Green, MD, PhD

[Read More >>](#)

February 25; 12PM

YCC/SCH Section of Hematology

SHM I-116

Modeling and Targeting Immune Signaling in MDS

Daniel T. Starczynowski, PhD

[Read More >>](#)

February 25; 12:15PM

Radiology & Biomedical Imaging Grand Rounds Lecture

TAC N-107

Lung Cancer Screening

Denise, Abreel, MD

[Read More >>](#)

February 25; 12:30PM

Pathology Grand Rounds

Fitkin Amphitheater, LMP 1094

Pathogenesis and Biomarker Studies Facilitate Risk Stratification and Targeted Therapy in Diffuse Large B-cell Lymphoma

Ken H. Young, MD, PhD

[Read More >>](#)

February 26; 12PM

Immune checkpoint therapy for non-small-cell lung cancer: an update.

Xia B, Herbst RS.

Immunotherapy. 2016 Feb 9.

[Read More >>](#)

Early and multiple origins of metastatic lineages within primary tumors.

Zhao ZM, Zhao B, Bai Y, Iamarino A, Gaffney SG, Schlessinger J, Lifton RP, Rimm DL, Townsend JP.

Proc Natl Acad Sci U S A. 2016 Feb 8.

[Read More >>](#)

Knowledge of Cancer Stage among Women with Nonmetastatic Breast Cancer.

Hinchey J, Goldberg J, Linsky S, Linsky R, Jeon S, Schulman-Green D.

J Palliat Med. 2016 Feb 8.

[Read More >>](#)

YCC Research in Progress Series

NP4-101B

TBA

[Read More >>](#)

February 26; 7:30PM

Yale Medical Symphony Orchestra Performance

Harkness Auditorium

Winter Concert

[Read More >>](#)

February 28; 6PM

Yale Cancer Center Answers

WNPR 90.5

Clinical Applications of Research

Demetrios Braddock, MD, PhD

[Read More >>](#)

February 29; 11AM

YCC Radiobiology and Radiotherapy Research Program Seminar

SHM I-304

Regulation of Cancer Stem Cell Stemness in the Hypoxic Microenvironment

Hoon Kim, PhD

[Read More >>](#)

February 29; 2PM

YCC Special Seminar

Giarman Conference Room, SHM B-201

Anti-CD40 as a Solid Tumor Immunotherapy

David Bajor, MD

[Read More >>](#)

February 29; 4PM

Employee and Family Resources

Park Street Seminar Room, 202

Mindfulness Solutions: A Class for Caregivers

[Read More >>](#)

February 29; 6:30PM

**Postgraduate Institute for
Medicine and KC Consulting LLC
Presentation**

Zinc

*Optimizing Relationships With
Hematologists and Primary
Physicians for Best MPN Patient
Practices*

Rami Komrokji, MD

[Read More >>](#)

March 1; 9:30AM

**Pathology Research in Progress
Talks**

TAC N-107

TBA

Deborah Ayeni and Gregory Breuer

[Read More >>](#)

March 1; 12PM

**Yale Cancer Center Grand
Rounds**

Park Street Auditorium

TBA

[Read More >>](#)

March 1; 5PM

**YCC Breast Clinical Lecture
Series**

Smilow first floor conference room,
1-330

TBA

[Read More >>](#)

March 3; 12:30PM

Pathology Grand Rounds

Fitkin Amphitheater

*Genetics and Therapy of Myeloid
Leukemia*

Ross Levine, MD

[Read More >>](#)

March 3; 3PM

YCC Special Seminar

Fitkin Amphitheater

*Immunotherapy for Non-Small Cell
Lung Cancer: Multi-disciplinary Team
Science at Yale Cancer
Center/Smilow Cancer Hospital*

Roy Herbst, MD, PhD

[Read More >>](#)

March 4; 12PM

YCC Research in Progress Seminar

NP4-101B

TBA

Don Nguyen, PhD

[Read More >>](#)

Submissions

Please submit your recent publication and grant announcements to:

Renee Gaudette

Director, Public Affairs and Marketing

renee.gaudette@yale.edu

 **Forward to a Friend**