

# Yale RNA club

**Xiongwen Cao**

Sarah Slavoff Lab

*"alt-RBM10 downregulates ribosome biogenesis by regulating maturation of 60S ribosome subunit"*

**Jin Wei**

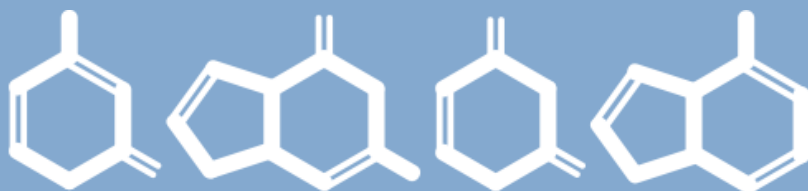
Craig Wilen Lab

*"Genome-wide CRISPR screens reveal host factors critical for SARS-CoV-2 infection"*



**Tuesday**  
**Mar 9, 2021**

**9:00 AM**  
**Zoom!**



Yale Center for RNA Science and Medicine

Info contacts:

**Giulia Biancon**

[giulia.biancon@yale.edu](mailto:giulia.biancon@yale.edu)

**Diana Martinez Saucedo**

[diana.martinezsaucedo@yale.edu](mailto:diana.martinezsaucedo@yale.edu)