

DirectConnect

Inside Yale Cancer Center

October 16, 2015

Announcements

Yale Presents at ASTRO

I am pleased to share that Yale Radiation Oncology will have a strong presence at the 57th Annual ASTRO meeting beginning this weekend in San Antonio. Many members of the therapeutic radiology faculty are participating in the meeting as session moderators and discussants. Dr. Lynn Wilson is co-moderator of the scientific session for late-breaking abstracts.

Oral Presentations:

Stereotactic Body Radiation Therapy Versus Conventionally Fractionated Radiation Therapy: A Propensity Score Matched Analysis of Survival in Unresected Pancreatic Cancer

Christopher Corso

Identification and Characterization of Novel DNA Repair Inhibitors as Potential Tumor Cell Radiosensitizers

Vikram Jairam

Evaluation at Academic Centers Increases the Likelihood of Active Surveillance in Low-Risk Prostate Cancer

Nataniel Lester-Coll

Nanoparticle Enhanced Focused K_v X-ray Radiation Therapy

Wu Liu

from the desk of

Peter G. Schulam, MD, PhD

Director, Yale Cancer Center
and Physician-in-Chief,
Smilow Cancer Hospital (Interim)



Recent News

Read recent articles featuring experts from Yale Cancer Center

[News Center >>](#)

LATEST ARTICLES:



Closing the Breast Cancer Gap. Women of certain ethnicities have a higher risk of bad outcomes. Now, some medical professionals are trying to change that gap.

[Read More >>](#)

Survival Comparison of 3 Versus 4-5 Fractions for Stereotactic Body Radiation Therapy in Stage I Non-Small Cell Lung Cancer

Henry Park

The Addition of Radiation Therapy to Adjuvant Chemotherapy is Associated With Improved Overall Survival in Resected Pancreatic Adenocarcinoma

Charles Rutter

In addition, a full list of poster presentations and agenda of Yale's participation is available to download.

[Learn More >>](#)



Dr. Babak Litkouhi joins Smilow Gynecologic Oncology Program

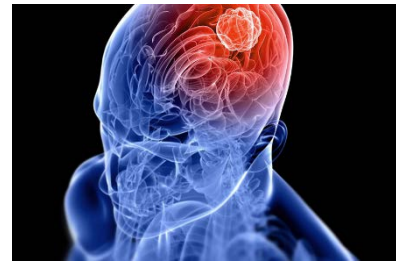
Babak Litkouhi, MD, is a board-certified gynecologic oncologist specializing in the clinical and surgical care of women with gynecological cancers. Dr. Litkouhi has extensive expertise in both traditional "open" surgery and minimally invasive surgical techniques, including laparoscopic and robotic surgery. His research on various topics in cancer medicine have been published in

journals such as *Gynecologic Oncology*, *Neoplasia*, and *Cryobiology*, and presented at regional and national medical meetings. He joins Yale from the John Thurer Cancer Center at Hackensack University Medical Center where he served as Co-chief of the Gynecologic Oncology Division. He received his medical degree from Mount Sinai School of Medicine.

Ruth McCorkle Oncology APP Award Nominations

We are pleased to accept nominations for the 4th annual "Ruth McCorkle Oncology Advanced Practice Provider" award. This annual recognition from Yale Cancer Center/Smilow Cancer Hospital will be presented at the Yale Cancer Center Conclave on Monday, November 23.

Please consider nominating yourself or a colleague for this award. It is a unique opportunity to recognize the contributions of our Nurse Practitioner and Physician Assistant colleagues who contribute so much to oncology patient care.



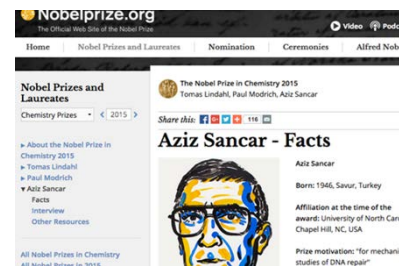
Rare mutation may extend survival in lung cancer patients with brain metastases

[Read More >>](#)



Husband And Wife Both With Breast Cancer Show It Isn't Just A Woman's Disease

[Read More >>](#)



Aziz Sancar, a Former Fellow in Therapeutic Radiology at Yale, Awarded the Nobel Prize in Chemistry

[Read More >>](#)

[Download Application >>](#)

Pediatric Hematology & Oncology CME Dinner

Please join us on Thursday, November 5 for presentations from the Pediatric Hematology and Oncology Program on the latest treatment options for our pediatric patients. Hosted by Dr. Gary Kupfer, the evening will include a variety of lectures from our faculty.

[View Agenda >>](#)

[Register >>](#)

NY Cancer Genomics Research Network

The New York Genome Center is sponsoring a new series of meetings on the topic of cancer genomics. The NY Cancer Genomics Research Network meetings are geared towards Principal Investigators and their trainees in the New York area and Yale has been invited to attend/participate. The meetings take place on the first Tuesday of each month from 5-7pm at the New York Genome Center and are followed by a social hour after the meeting.

The meeting format will generally include 2 speakers from the participating institutions and one from the NYGC. If you are interested in learning more about these meetings and being included on the listserv for these events please contact [Katie Politi](#).

Notables

Gary Kupfer, MD has received a \$250,000 Scholar Grant from the **Hyundai Hope on Wheels Program**. Dr. Kupfer will use the funding to screen the Fanconi anemia pathway to identify synthetic lethality to find targets in tumors mutant in Fanconi genes. He also hopes to identify pathways to target that will result in protection of children's bone marrow who have the Fanconi anemia bone marrow failure syndrome.

Research in the News



Pregnancy after cancer: Techniques like rapid egg freezing help make it possible

[Read More >>](#)

Join Yale Cancer Center on Facebook

Like us on Facebook 

LATEST POSTS:

"Nursing is an art that involves observing, listening, and reacting with thoughtful kindness. Our infusion room is full of hope and smiles. The tone is set with warm understanding and acceptance. Our goal is to enhance a patient's journey through cancer with love, warmth and laughter. In caring for our patients, we hope to provide stability and enable them to be grounded during their journey."



[Read More >>](#)

A new study, led by Yale's Sherry McKee, Professor of Psychiatry, reveals that the most effective prescription drug used to quit smoking initially helps more women than men. The research team found

Rare mutation may extend survival in lung cancer patients with brain metastases

Most patients with non-small cell lung cancer (NSCLC) that has metastasized to the brain have a dire prognosis. But Yale researchers have identified a subset of those patients with a rare genetic mutation who are living significantly longer than patients without the mutation.

[Learn More >>](#)

Smoking cessation drug proves initially more effective for women

The most effective prescription drug used to quit smoking initially helps women more than men, according to a Yale School of Medicine study. The study, published Oct. 7 by the journal *Nicotine and Tobacco Research*, found that varenicline, marketed as Chantix, was more effective earlier in women, and equally effective in women and men after one year.

[Learn More >>](#)

Employee Profile: Vanna Dest

Vanna Dest, MSN, APRN, BC, AOCN, has been in oncology nursing since 1984 when she started as a staff nurse at the Hospital of Saint Raphael. She received her Master's degree from Yale School of Nursing in 1992 and practiced as an oncology clinical nurse specialist in radiation at Saint Raphael's and later pursued her Post-Master's Certificate in Oncology at Yale School of Nursing in 2002. She has been a lecturer for the oncology APRN program with a concentration at Yale School of Nursing since 2007 and is currently the Manager of the Oncology Advanced Practice Providers (APP) at Smilow Cancer Hospital.



Vanna's current position was created to provide leadership for the many APPs at Smilow, which includes the Care Centers and most recently the Oncology Hospitalist team. She provides day to day administrative oversight and support for all oncology APPs and fosters communication and professional development. She is responsible for ensuring that APP practice is consistent with evidence

that Varenicline, marketed as Chantix, was 46% more effective in women after three months of treatment, and 31% more effective at maintaining complete abstinence after six months.



[Read More >>](#)

Pam, now 27 years old, learned a couple of years ago that she has the BRCA1 gene mutation. This mutation, along with a family history of cancer, led doctors to believe she had an 88% chance of having breast cancer in her lifetime. In order to minimize this risk, Pam decided to undergo a preventative double mastectomy this past May.

To help other women in similar circumstances, Pam decided to share her story on her blog, "Positive Previvor." It is truly inspirational. Take a look at her first posting, "I'm just like Angelina Jolie."



[Read More >>](#)

When Ena Williams received a call that her sister, Morine, had received a diagnosis of cancer, she didn't know what to think. No one in their family, immediate or extended, had ever been diagnosed with cancer before. To complicate matters further, her sister lives in

based practice and regulatory requirements. In addition, she is responsible for recruitment of oncology APPs and their on-boarding process. Vanna is also involved in direct cancer care and care for patients in the Thoracic Oncology and Head and Neck Cancers Programs.

"Oncology nursing has been my passion since my early teenage years and I truly could not imagine doing anything else. Oncology patients have such tremendous strength and courage. I have learned so much from my patients over the years and it is truly a privilege to care for them. In my current role, I feel that I have the best of both worlds-caring for patients and supporting and developing our dedicated, highly gifted APP team at Smilow and its Care Centers."

Vanna strives to foster a sense of community and support for the APPs. Cathy Lyons, RN, MS, Executive Director of Patient Care Services at Smilow Cancer Hospital, commented, "Vanna is our inaugural manager of our APP group. In this role, she has built a true community of advanced practice providers, providing them a source for continuing education, professional development, and advocacy. Vanna's leadership has made all the difference in our ability to attract and retain top talent. We are so lucky to have her!"

Funding and Award Opportunities

The National Cancer Institute (NCI) announces the reissuance of the Outstanding Investigator Award (R35)

The NCI is pleased to announce the reissuance of the Outstanding Investigator Award (OIA) funding opportunity announcement: [PAR-15-342](#). The OIA will support investigators with outstanding records of productivity in cancer research with \$600,000 in direct costs per year for 7 years to provide funding stability.

The OIA will allow funded investigators the freedom to embark on long-term projects of unusual potential in cancer research; the opportunity to take greater risks and be more adventurous in their lines of inquiry; and sufficient time to develop new techniques.

Applications must be submitted by Institutions who have nominated a Program Director/Principal Investigator (PD/PI) with outstanding productivity in cancer research as a recipient of NCI grant(s) for at least the last 5 consecutive calendar years. The PD/PI will be expected to commit at

the Caribbean where access to proper medical care is limited. "We were blessed that she could come to Smilow, where she had surgery and then remained with me over the next year while she healed."





[Read More >>](#)


Follow Yale Cancer Center on Twitter


Follow us on [twitter](#)

LATEST TWEETS:

 5% of #nonsmall cell #lungcancer patients have ALK mutation. Even with brain mets, patients can live years longer <http://bit.ly/1MshRod>

 ALK mutation may extend survival in #nscL patients with brain lesions so lesions may drive treatment <http://bit.ly/1Pv5ltB> @YaleMed

 Husband and wife both with breast cancer show it isn't just a woman's disease via @goodnews

 Powerful words on #breastcancer from a young woman with the #brca mutation #AngelinaJolie

least 50% of his/her research activities to the OIA; the Institution will be expected to commit at least 20% salary support. Interested applicants should read the reissuance closely, since there are a few significant changes from the first issuance, including eligibility requirements and research strategy page length.

Letter of Intent Deadline: October 23, 2015

[Learn More >>](#)

National Comprehensive Cancer Network® (NCCN®) /ImmunoGen Inc. Grants

National Comprehensive Cancer Network® (NCCN®) is pleased to announce that it has received a research grant from ImmunoGen Inc. to support NCCN investigator initiated pre-clinical studies of mirvetuximab soravtansine (previously known as IMG853) in the treatment of solid tumors of special interest.

Application Deadline: October 26, 2015

[Learn More >>](#)

Leslie H. Warner Postdoctoral Fellowships

Yale Cancer Center is pleased to announce the Leslie H. Warner Postdoctoral Fellowships to be awarded for one year commencing December 1, 2015, to fellows conducting cancer research with a Yale Cancer Center member. The Fellowships will support innovative basic, translational, clinical, or population-based cancer research. Candidates who began postdoctoral studies on or after December 1, 2014 are eligible for this award. Up to four applications will be funded.

Application Deadline: October 29, 2015

[Learn More >>](#)


Women's Health Research at Yale Pilot Project Awards

All proposals must demonstrate innovative approaches to understanding women's health or sex differences, and describe a clear path to implementation for clinical or public health benefit. These awards offer up to \$35,000 (direct costs only) in funding for research designed to meet a clear need in advancing women's health.

Application Deadline: October 29, 2015

[Learn More >>](#)

<http://bit.ly/1jmmGsG>

 Carolyn Presley Discusses the Burden of Curative Lung Cancer Treatment
<https://shar.es/1utoy0> via @cure_magazine @onclive

Closer to Free

closer to free

The fund to advance cancer research and enhance patient care

Events

October 16; 1:00 PM

YCC Developmental Therapeutics Research Program

SHM 1-116

Aldehyde Dehydrogenases as Potential Therapeutic Targets for Cancer Treatment

Vasilis Vasiliou, PhD

[Read More >>](#)

October 17; 8:00 AM

Student National Medical Association (SNMA) Regional Medical Education Conference

The Anlyan Center

From 'Do No Harm' to 'Do What's Right': Rethinking Social Justice in Medicine

[Read More >>](#)

Brozman Foundation Ovarian Cancer Grants

To provide funding for a pilot project in ovarian cancer prevention and early detection, which would ultimately lead to national peer-reviewed grants.

Application Deadline: October 30, 2015

[Learn More >>](#)

Smilow Patient Projects Grants

Yale Cancer Center and Smilow Cancer Hospital at Yale-New Haven are pleased to announce the second call for applications to fund small projects to improve patient care at Smilow Cancer Hospital. Monies for this program have come through our "Closer to Free" fund. Any employee at Smilow Cancer Hospital who develops a small project may apply by submitting an application for review. Projects can range from a patient education program to stress management for staff. In order to be eligible, the employee must be sponsored by a current Cancer Center Member

Application Deadline: November 2, 2015

[Learn More >>](#)

[Application >>](#)

American Cancer Society Institutional Research Grants

Yale Cancer Center is pleased to announce a competition for grants for Yale Assistant Professors. The awards are to support innovative work in the broad fields of basic, translational, clinical, and prevention/control cancer research by new investigators. These grants are restricted to investigators who have not already received federal research grant support or a previous ACS-IRG award. One-year grants will provide up to \$30,000 for each award. YCC members and non-members are encouraged to apply.

Application Deadline: November 12, 2015

[Learn More >>](#)

[Application >>](#)

Lion Hart Fund for Cancer Research

Yale investigators are encouraged to submit proposals of innovative, high-potential projects requiring pilot funding. Projects may be in any area of breast cancer research - basic, translational, clinical, outcomes and population science are all welcomed from any discipline or group of disciplines. A committee, comprised of scientific/medical experts from Yale Cancer Center and dedicated Lion

October 18; 6:00 PM

Yale Cancer Center Answers

WNPR

Fertility Preservation and Cancer

Cindy Duke, MD and Ryan Martin, MD

[Read More >>](#)

October 19; 8:00 AM

Yale Cancer Center / Smilow Cancer Hospital Symposium

Park Street Auditorium

40 & Five: Celebrating Advances in Basic Cancer Research at Yale

Daniel C. DiMaio, MD, PhD, Melinda Irwin, PhD, MPH and David F. Stern, PhD

[Read More >>](#)

October 19; 1:30 PM

Yale New Haven Health / Employee and Family Resources

NP4-101A

Strategies to Prevent Compassion Fatigue and Take Care of Self

[Read More >>](#)

October 20; 9:30 AM

Pathology Research in Progress Series

TAC N-107

TBA

Haris Mirza MD, PhD and Gilbert Moeckel MD, PhD

[Read More >>](#)

October 20; 12:00 PM

Yale Cancer Center Grand Rounds

Park Street Auditorium

Strategies to Improve Symptom Management for Patients with Prostate Cancer

Mark Hurwitz, PhD, MD

Non-Surgical Management of HCC

Hearts, will review the proposals and choose those to be funded. Funding will be \$20,000 for a one-year project.

Application Deadline: November 15, 2015

[Learn More >>](#)

Recent Publications

Family history of skin cancer is associated with early-onset basal cell carcinoma independent of MC1R genotype.

Berlin NL, Cartmel B, Leffell DJ, Bale AE, Mayne ST, Ferrucci LM.

Cancer Epidemiol. 2015 Sep 14.

[Read More >>](#)

Subsequent skin cancer in patients with early-onset basal cell carcinoma.

Berlin NL, Ferrucci LM, Cartmel B, Wang SY, Leffell DJ, McNiff JM, Mayne ST.

Australas J Dermatol. 2015 Aug;56(3):236-7.

[Read More >>](#)

Producing Evidence to Reduce Low-Value Care.

Howard DH, Gross CP.

JAMA Intern Med. 2015 Oct 12:1-2.

[Read More >>](#)

Gastric-type Endocervical Adenocarcinoma: An Aggressive Tumor With Unusual Metastatic Patterns and Poor Prognosis.

Karamurzin YS, Kiyokawa T, Parkash V, Jotwani AR, Patel P, Pike MC, Soslow RA, Park KJ.

Am J Surg Pathol. 2015 Nov;39(11):1449-1457.

[Read More >>](#)

Blood measurement of neuroendocrine gene transcripts defines the effectiveness of operative resection and ablation strategies.

Jeff Geschwind, MD

[Read More >>](#)

October 21; 12:00 PM

YCC Cancer Prevention & Control Research Program Seminar

60 College St, Room 216

Culturally Sensitive Palliative Care for People Affected by Cancer

Mark Lazenby, PhD

[Read More >>](#)

October 21; 5:00 PM

Yale New Haven Health / Employee and Family Resources

NP4-101A

Mindfulness Solutions

[Read More >>](#)

October 22; 8:00 AM

Health Equity Summit

Harkness Memorial Auditorium

Why Health Equity Matters: Eliminating Health Disparities

David Satcher, MD, PhD, FAAFP, FACPM, FACP

[Read More >>](#)

October 22; 12:30 PM

Pathology Grand Rounds

Fitkin Amphitheater

Implementing Widespread Personalized Medicine: Challenges from a Multi-Stake Holder Perspective

[Read More >>](#)

October 22; 1:30 PM

Yale Stem Cell Center

Yale's West Campus

Eighth Annual 2-Day Retreat

Modlin IM, Frilling A, Salem RR, Alaimo D, Drymoussis P, Wasan HS, Callahan S, Faiz O, Weng L, Teixeira N, Bodei L, Drozdov I, Kidd M.

Surgery. 2015 Oct 5. pii: S0039-6060(15)00703-5.

[Read More >>](#)

PET imaging evaluation of [18F]DBT-10, a novel radioligand specific to $\alpha 7$ nicotinic acetylcholine receptors, in nonhuman primates.

Hillmer AT, Zheng MQ, Li S, Scheunemann M, Lin SF, Holden D, Labaree D, Ropchan J, Teodoro R, Deuther-Conrad W, Carson RE, Brust P, Huang Y.

Eur J Nucl Med Mol Imaging. 2015 Oct 12.

[Read More >>](#)

Attracting Future Radiation Oncologists: An Analysis of the National Resident Matching Program Data Trends From 2004 to 2015.

Ahmed AA, Holliday EB, Deville C, Jaggi R, Haffty BG, Wilson LD.

Int J Radiat Oncol Biol Phys. 2015 Oct 6.

[Read More >>](#)

Gemcitabine plus nab-paclitaxel for advanced pancreatic cancer after first-line FOLFIRINOX: single institution retrospective review of efficacy and toxicity.

Zhang Y, Hochster H, Stein S, Lacy J.

Exp Hematol Oncol. 2015 Oct 7;4:29.

[Read More >>](#)

MEDICINE. Membrane traffic en route to cancer.

Ferguson SM.

Science. 2015 Oct 9;350(6257):162-3.

[Read More >>](#)

The Value and Relevance of the T Cell Lymphoma Registries and International Collaborations: the Case of COMPLETE and the T-Cell Project.

Bellei M, Nabhan C, Pesce EA, Conte L, Vose JM, Foss F, Federico M.

Curr Hematol Malig Rep. 2015 Oct 8.

Stuart Orkin, MD and Garry Nolan, PhD

[Read More >>](#)

October 23; 8:00 AM

Yale Stem Cell Center

Yale's West Campus

Eighth Annual 2-Day Retreat

Stuart Orkin, MD and Garry Nolan, PhD

[Read More >>](#)

October 25; 6:00 PM

Yale Cancer Center Answers

WNPR

Culture and Spiritually Sensitive Palliative Care of Muslims

Omar Shamieh, MD, MBA, Mohammad Zafir Al-Shahri, MD and Gassan Adnan Abudari, RN

[Read More >>](#)

October 26; 1:30 PM

Yale New Haven Health / Employee and Family Resources

NP4-101A

Strategies to Prevent Compassion Fatigue and Take Care of Self

[Read More >>](#)

October 27; 9:30 AM

Pathology Research in Progress Talks

TAC N-107

TBA

Hai Feng Zhang PhD and Leigh Goedeke PhD

[Read More >>](#)

October 27; 12:00 PM

Yale Cancer Center Grand Rounds

Park Street Auditorium

[Read More >>](#)

MET Expression in Primary and Metastatic Clear Cell Renal Cell Carcinoma: Implications of Correlative Biomarker Assessment to MET Pathway Inhibitors.

Shuch B, Falbo R, Parisi F, Adeniran A, Kluger Y, Kluger HM, Jilaveanu LB.

Biomed Res Int. 2015;2015:192406.

[Read More >>](#)

A Call for Value in Cancer Research.

Gross CP, Emanuel EJ.

JAMA Oncol. 2015 Oct 8:1-2.

[Read More >>](#)

Treatment of In-Transit Melanoma With Intralesional Bacillus Calmette-Guérin (BCG) and Topical Imiquimod 5% Cream: A Report of 3 Cases.

Kibbi N, Ariyan S, Faries M, Choi JN.

J Immunother. 2015 Nov-Dec;38(9):371-5.

[Read More >>](#)

Standardized Added Metabolic Activity (SAM) Predicts Survival After Intra-arterial Resin-Based 90Y Radioembolization Therapy in Unresectable Chemorefractory Metastatic Colorectal Cancer to the Liver.

Edalat F, Camacho JC, Kokabi N, Kendi AT, Galt JR, Kim HS.

Clin Nucl Med. 2015 Oct 8.

[Read More >>](#)

Sex Differences in Varenicline Efficacy for Smoking Cessation: A Meta-Analysis.

McKee SA, Smith PH, Kaufman M, Mazure CM, Weinberger AH.

Nicotine Tob Res. 2015 Oct 6.

[Read More >>](#)

Restoration of the p53 tumor suppressor function as a strategy to treat cancer

Galina Selivanova, MD

[Read More >>](#)

October 27; 5:00 PM

YCC Breast Clinical Lecture Series

Smilow First Floor Conference Room, 1-330

Breast Cancer Screening: Why, How, and Controversies (Part 2)

Regina Hooley, MD

[Read More >>](#)

October 28; 5:00 PM

Yale New Haven Health / Employee and Family Resources Presents

NP4-101A

Mindfulness Solutions

[Read More >>](#)

October 29; 9:00 AM

Therapeutic Radiology Grand Rounds

NP4-101A

Pancreatic Cancer Prevention with Aspirin

Harvey Risch, MD, PhD

[Read More >>](#)

October 29; 12:30 PM

Pathology Grand Rounds

LMP 1094

Defective Inflammation Resolution Atherosclerosis: Mechanisms and Therapeutic Opportunities

Ira Tabas, MD, PhD

[Read More >>](#)

October 29; 5:30 PM

Smilow Wellness Workshop

Park Street Auditorium

Exploring Qigong

Enrique Bejarano

[Read More >>](#)

Submissions

Please submit your recent publication and grant announcements to:

Renee Gaudette

Director, Public Affairs and Marketing

renee.gaudette@yale.edu

 Forward to a Friend