

# DirectConnect

Inside Yale Cancer Center

**March 3, 2023**

Dear Colleagues:

September may seem like it is far away (and I don't want to wish away the spring and summer) but it is not too early to think about the 13th annual Closer to Free (CTF) Ride that will take place on Saturday, September 9. CTF is an incredible event and will only continue to grow in the years ahead. It is an opportunity for our entire community to come together, pedal in harmony, and raise funds for cancer research and patient care at Yale Cancer Center and Smilow Cancer Hospital. Last year we raised over \$3 million dollars, and I think we can easily double that amount in the next couple of years. As a 22-year veteran of the Boston-based Pan-Mass Challenge, I know that athletic fundraisers like CTF take on a life of their own.

The kickoff event for the 2023 ride is Sunday, March 26. If you are riding or interested in volunteering, please try to attend. And if you are undecided, come check it out and learn more. There are many options at CTF to mesh with your cycling interests and prowess. You can ride as little as 10 miles and as many as 100. There is also a virtual option for those who cannot attend in person in New Haven. If you plan to do more than 25 miles, begin your training now— you must get comfortable sitting on the saddle for a few hours.

I will be riding on September 9, and I hope to see many of you there. Remember, fundraising through CTF is critical, but partnering with our patients and their families is truly special.

*Eric*

## Announcements

### Closer to Free Launch Party

Please join the Closer to Free community on Sunday, March 26 for the official Closer to Free Launch Party! Thank you to Bear's Smokehouse, New Haven for hosting the event as

our official launch sponsor.

[Learn More](#)

**2023 LAUNCH PARTY!**

### Eric P. Winer, MD

Director, Yale Cancer Center

Physician-in-Chief, Smilow Cancer Network

Yale  
NewHaven  
Health  
Smilow Cancer  
Hospital

Yale CANCER CENTER  
A Comprehensive Cancer Center Designated  
by the National Cancer Institute

## News Center



**RefleXion Announces Installation of X1 Platform at Smilow Cancer Hospital at Yale New Haven**



[Read More](#)

Learn more  
Register



## CME Programs

Join Yale Hematology for a CME webinar series highlighting advances presented at ASH and clinical and translational research from Yale Cancer Center and Smilow Cancer Hospital on Fridays at noon. **Register to attend** and watch the videos from prior programs on **YouTube**.

March 3 - Lymphoma

March 10 - Cellular Therapies

Our monthly Smilow Shares with Primary Care series continues Tuesday, March 7 at 5pm with insight into the care and treatment of patients with colorectal cancer. **Join live on Tuesday**

---

## Notables

**Roy S. Herbst, MD, PhD**, Deputy Director and Chief of Medical Oncology, participated in the **American Association for Cancer Research (AACR) Early-Career Hill Day** yesterday to accompany a group of early-career investigators to visit Representative Rosa DeLauro and share the importance of funding for cancer research.

**Rachel Perry, PhD**, Assistant Professor of Cellular & Molecular Physiology and of Medicine (Endocrinology) and a member of Yale Cancer Center's Cancer Signaling Networks Research Program, has been selected to receive the **American Physiological Society's New Investigator Award for 2023**. As part of the award, Dr. Perry will present a lecture on her work at the society's summit in April.

The **Connecticut Academy of Science and Engineering (CASE)** has elected 35 new members for 2023. Members are "Connecticut's leading experts in science, technology, engineering, mathematics, and medicine." Yale Cancer Center members elected to the Academy include **Carlos Fernández-Hernando, PhD**, Anthony N. Brady Professor of Comparative Medicine and of Pathology; **Steven Kleinstein, PhD**, Anthony N. Brady Professor of Pathology; **Markus Müschen, MD, PhD**, Arthur H. and Isabel Bunker Professor of Medicine (Hematology) and Professor of Immunobiology; Director, Center of Molecular and Cellular Oncology; and **Jordan Pober, MD, PhD**, Bayer Professor of Translational Medicine and Professor of Immunobiology, Pathology and Dermatology.

---

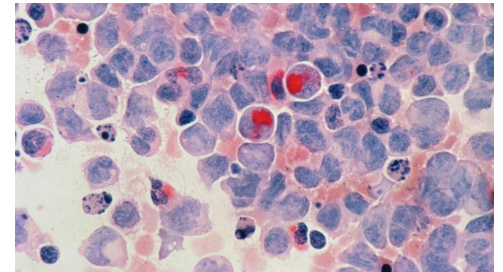
Surgeons Wouldn't Touch a CT Man's Brain Tumor. Then one looked and said, 'I can help that guy.'



[Read More](#)

---

Cancer Evolution is Mathematical



[Read More](#)

---

Health Headlines: Yale Urologist Discusses Bladder Cancer Drug Shortage



[Watch Now](#)

---

Black Patients Wait Longer for Uterine Cancer Testing, Diagnosis



# DEI Update

## Diversity, Equity, and Inclusion Efforts Start at the Top



Efforts to expand diversity, equity, and inclusion across Smilow Cancer Hospital and Yale Cancer Center are focused on diversifying the medical staff, faculty, trainees, and student body, but, more importantly, bringing equity to disparities in healthcare outcomes.

The focus emanates from Eric P. Winer, MD, and extends throughout the enterprise. The leadership is committed to building a staff that more closely resembles the community it serves and ensures that everyone benefits from advances in medicine, regardless of their background or economic status.

“The causes of disparities in healthcare outcomes are many,” said Dr. Winer. “The contribution of sociodemographic factors, unequal access to care, and the failure of our cancer care system to help every patient complete their treatment play a major role. We are totally committed at Yale to addressing this problem and diminishing these disparities.”

Faye Rogers, PhD, who was recently appointed Associate Cancer Center Director for Diversity, Equity, and Inclusion, said her primary goal is to increase the diversity of faculty, staff, and trainees within Yale Cancer Center. “Beyond increasing the diversity of our community, it is essential that we create an inclusive environment where each individual feels a true sense of belonging,” said Dr. Rogers.

[Read More](#)

## A 50-Year History of the Minority Organization for Retention and Expansion at Yale School of Medicine

With over a dozen interviewees and conversations spanning throughout 2021–2022, an oral history report of the Minority Organization for Retention

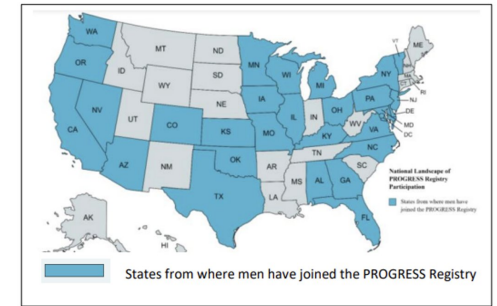
and Expansion (MORE) reflects on the personal and structural challenges Black faculty members of the Yale School of Medicine community faced over the past five decades, leading to the establishment of MORE. Firsthand recollections of the shifting dynamics of Black student admissions to the inspiring faculty members that advocated for diversity, equity, and inclusion



[Read More](#)

## ASCO GU 2023: Factors Related to Men's Experience with Prostate Cancer Germline Testing

**National Landscape of PROGRESS Registry Participation**



[Read More](#)

## How Smilow Cancer Hospital Streamlined Collaboration Between Pharmacy and Infusion



[Read More](#)

## Bladder Cancer Support Group Using Virtual Connections to Help Patients



give readers a lens into just how essential it is to know where our history begins and how it shapes where we are heading.

Documented by Historical Research Intern Sabrina Mellinghoff and supervised by Naomi Rogers, PhD, professor in the history of medicine and of history, this oral history report will be made available soon on the MORE website and as printed material.

## Employee Profile: D'Ana Brooks

The Foundation for the Accreditation for Cellular Therapy (FACT) is a non-profit corporation that establishes standards for high quality medical and laboratory practice in cellular therapies. The Cellular Therapy Program at Yale New Haven Hospital is the only FACT accredited program in the state, and as part of this, requires a manager to oversee quality regulations and assurance of the program. That is where D'Ana Brooks, MSN, RN, CNL, CMSRN, Cellular Therapy Quality Manager, comes in. D'Ana is responsible for overseeing the Data Managers in the program, as well as ensuring compliance and performing regular audits to track any deviations and to meet regulatory and accreditation requirements.



Every three years there is an extensive application that needs to be completed to ensure compliance, which D'Ana spearheads. She meets with the multidisciplinary clinics as often as possible and discusses areas of improvement and any safety issues that may have come up. As part of FACT, patient reported outcomes are submitted to the FDA and D'Ana makes it a point to visit with supportive units like the ICU and ED to share information about FACT, and to build relationships.

“Many people are not familiar with FACT or what is required of them,” said D'Ana. “They don't realize why they have to complete specific items, or track certain data, so I make it a point to let them know the 'why' behind it and that what they do matters. Once this information is submitted to the FDA, it can help form future practices. Their hard work does not go unnoticed.”

Before taking on this role, D'Ana was a nurse in the section of Pulmonary & Medicine and then the Assistant Patient Services Manager in Radiation

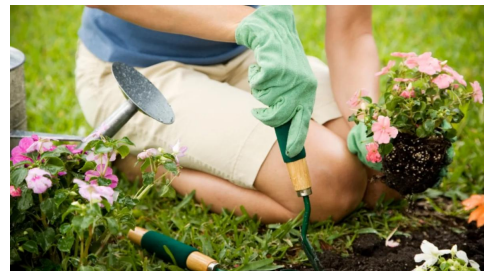
Oncology. Despite her busy schedule, D'Ana works hard to create a good work-life balance and tries to catch as many Yankees games as possible. She will graduate soon with her Doctor of Nursing Practice (DNP).

Maureen Major Campos, RN, MS, Director of Smilow Ambulatory Services, commented, “D'Ana has been a consistent and supportive leader in the role as Quality Manager. Her leadership style is to engage the people around her



[Read More](#)

[How Gardening Can Slash Your Cancer Risk, According to a New Study](#)



[Read More](#)

Follow us!

facebook



YouTube

Instagram



as Quality Manager. Her leadership style is to engage the people around her, acknowledge personal staff achievements, and highlight career accomplishments.”

Alexandra Dormal, BSN, RN, Program Manager, Cellular Therapy, also commented on D’Ana’s unique skills, “D’Ana uses audits she performs as a teaching opportunity by reviewing and explaining the findings to nurses and managers within units supporting the Cell Therapy Program, bridging regulatory requirements with nursing practice. We are now very close to the FACT inspection and feel ready due to D’Ana’s diligent work.”

## Recent Publications

An, L., Zheng, R., Zhang, S., Chen, R., Wang, S., Sun, K., Lu, L., Zhang, X., Zhao, H., Zeng, H., Wei, W., & He, J.

**Hepatocellular carcinoma and intrahepatic cholangiocarcinoma incidence between 2006 and 2015 in China: estimates based on data from 188 population-based cancer registries.**

*Hepatobiliary surgery and nutrition*, 12(1), 45–55.

[Read More](#)

Valenzuela, C. D., Moaven, O., Solsky, I. B., Stauffer, J. A., Del Piccolo, N. R., Cheung, T., Corvera, C. U., Wisneski, A. D., Cha, C. H., Pourhabibi Zarandi, N., Dourado, J., Perry, K. C., Russell, G., & Shen, P.

**Conditional Survival After Hepatectomy for Colorectal Liver Metastasis: Results from the Colorectal Liver Operative Metastasis International Collaborative (COLOMIC).**

*Annals of surgical oncology*, 10.1245/s10434-023-13189-w.

[Read More](#)

Kumar, S., & Gerstein, M.

**Unified views on variant impact across many diseases.**

*Trends in genetics : TIG*, S0168-9525(23)00026-4.

[Read More](#)

Tolaney, S. M., Tarantino, P., Graham, N., Tayob, N., Parè, L., Villacampa, G., Dang, C. T., Yardley, D. A., Moy, B., Marcom, P. K., Albain, K. S., Rugo, H. S., Ellis, M. J., Shapira, I., Wolff, A. C., Carey, L. A., Barroso-Sousa, R., Villagrasa, P., DeMeo, M., DiLullo, M., ... Winer, E. P.

**Adjuvant paclitaxel and trastuzumab for node-negative, HER2-positive breast cancer: final 10-year analysis of the open-label, single-arm, phase 2 APT trial.**

*The Lancet. Oncology*, 24(3), 273–285.

[Read More](#)

Lee, A. A., Wang, Q. L., Kim, J., Babic, A., Zhang, X., Perez, K., Ng, K., Nowak, J., Rifazzzzzzzzgi, N., Sesso, H. D., Buring, J. E., Anderson, G. L., Wactawski-Wende, J., Wallace, R., Manson, J. E., Giovannucci, E. L., Stampfer, M. J., Kraft, P., Fuchs, C. S., Yuan, C., ... Wolpin, B. M.

**Helicobacter pylori Seropositivity, ABO Blood Type, and Pancreatic Cancer Risk from 5 Prospective Cohorts.**

*Clinical and translational gastroenterology*, 10.14309/ctg.0000000000000573.

[Read More](#)

Chavez, J. C., Foss, F. M., William, B. M., Brammer, J. E., Smith, S. M., Prica, A., Zain, J. M., Tuscano, J. M., Shah, H., Mehta-Shah, N., Ramakrishnan Geethakumari, P. R., Wang, B. X., Zantinge, S., Wang, L., Zhang, L., Boutrin, A., Zhao, W., Cheng, L., Standifer, N., Hewitt, L., ... Siu, L. L.

**Targeting the Inducible T-cell Costimulator (ICOS) in patients with Relapsed/Refractory T-Follicular Helper Phenotype Peripheral T-Cell and Angioimmunoblastic T-Cell Lymphoma.**

*Clinical cancer research : an official journal of the American Association for*

LinkedIn

YALE CANCER  
ANSWERS

Gary is a survivor of Stage 4 throat cancer and is a member of Team Live Positive, a fundraising team that participates in the Closer to Free Ride, the signature fundraising event for Yale Cancer Center and Smilow Cancer Hospital. Gary has participated in every CTF Ride since it began, as a volunteer in year one and as a rider during every subsequent year. For his first year as a rider, he received a ‘Survivor’ bike jersey, and in honor of Smilow’s 10-year anniversary in 2021, he donated his jersey to be displayed within the hospital.

Due to delays as a result of the COVID-19 pandemic, his framed jersey was only recently installed on the 12th floor of the North Pavilion and a plaque was placed below, sharing Gary’s story.



[Read More](#)

Dr. Roy Herbst, Deputy Director and Chief of Medical Oncology at Yale Cancer Center, participated in the American Association for Cancer Research (AACR) Early-Career Hill Day yesterday to accompany a group of early-career investigators to visit Representative Rosa DeLauro and share the importance of funding for [#cancerresearch](#).



*Clinical cancer research : an official journal of the American Association for Cancer Research*, CCR-22-2955.

[Read More](#)

Rose, L., Lustberg, M., Ruddy, K. J., Cathcart-Rake, E., Loprinzi, C., & Dulmage, B.

**Hair loss during and after breast cancer therapy.**

*Supportive care in cancer : official journal of the Multinational Association of Supportive Care in Cancer*, 31(3), 186.

[Read More](#)

Barden, M. M., & Omuro, A. M.

**Top advances of the year: Neuro-oncology.**

*Cancer*, 10.1002/cncr.34711.

[Read More](#)

Liu, R., Ospanova, S., & Perry, R. J.

**The impact of variance in carnitine palmitoyltransferase-1 expression on breast cancer prognosis is stratified by clinical and anthropometric factors.**

*PloS one*, 18(2), e0281252.

[Read More](#)

Liu, Y., DiStasio, M., Su, G., Asashima, H., Enniful, A., Qin, X., Deng, Y., Nam, J., Gao, F., Bordignon, P., Cassano, M., Tomayko, M., Xu, M., Halene, S., Craft, J. E., Hafler, D., & Fan, R.

**High-plex protein and whole transcriptome co-mapping at cellular resolution with spatial CITE-seq.**

*Nature biotechnology*, 10.1038/s41587-023-01676-0.

[Read More](#)

Tran, T. T., Caulfield, J. I., Zhang, L., Schoenfeld, D. A., Djureinovic, D., Chiang, V. L., Oria, V. O., Weiss, S. A., Olino, K., Jilaveanu, L. B., & Kluger, H. M.

**Lenvatinib or anti-VEGF in combination with anti-PD-1 differentially augments anti-tumor activity in melanoma.**

*JCI insight*, e157347.

[Read More](#)

Lu, L., Ma, W., Johnson, C. H., Khan, S. A., Irwin, M. L., & Pusztai, L.

**In silico designed mRNA vaccines targeting CA-125 neoantigen in breast and ovarian cancer.**

*Vaccine*, S0264-410X(23)00183-4.

[Read More](#)

Aftab, F., Rodriguez-Fuguet, A., Silva, L., Kobayashi, I. S., Sun, J., Politi, K., Levantini, E., Zhang, W., Kobayashi, S. S., & Zhang, W. C.

**An intrinsic purine metabolite AICAR blocks lung tumour growth by targeting oncoprotein mucin 1.**

*British journal of cancer*, 10.1038/s41416-023-02196-z.

[Read More](#)

Chhoda, A., Sharma, A., Sailo, B., Tang, H., Ruzgar, N., Tan, W. Y., Ying, L., Khatri, R., Narayanan, A., Mane, S., De Kumar, B., Wood, L. D., Iacobuzio-Donahue, C., Wolfgang, C. L., Kunstman, J. W., Salem, R. R., Farrell, J. J., &

Ahuja, N.

**Utility of promoter hypermethylation in malignant risk stratification of intraductal papillary mucinous neoplasms.**

*Clinical epigenetics*, 15(1), 28.

[Read More](#)

Ahmad, M., Saeed, S., Olamiju, B., Silber, A., & Leventhal, J.

**Dermatologic toxicities of chemotherapy: an educational intervention for skin of color women with breast cancer.**

*International journal of women's dermatology*, 9(1), e073.

[Read More](#)



[Read More](#)

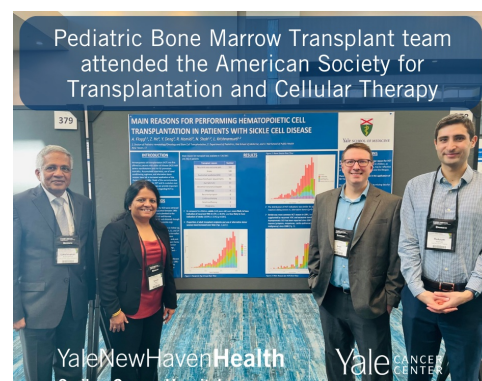
The Center for Community Engagement and Health Equity at Yale Cancer Center strives to achieve health equity and eliminate the burden of cancer for all across Connecticut. What is community? For the Center for Community Engagement and Health Equity (CEHE), it's not just the people in the neighborhoods surrounding Yale and the partners in surrounding towns, but the whole state of Connecticut.



[Read More](#)

Our Pediatric Bone Marrow Transplant team recently attended the American Society for Transplantation and Cellular Therapy meeting in Orlando to present posters on sickle cell disease transplant.

Team members featured in the photo include (left – right): Lakshmanan Krishnamurti, MD; Niketa C. Shah, MD; Aron Flagg, MD; and Rohaum Hamidi, MD, pediatric resident. Not pictured: Zili (Hugo) He, and Yanhong Deng.



Lin, N. U., Murthy, R. K., Abramson, V., Anders, C., Bachelot, T., Bedard, P. L., Borges, V., Cameron, D., Carey, L. A., Chien, A. J., Curigliano, G., DiGiovanna, M. P., Gelmon, K., Hortobagyi, G., Hurvitz, S. A., Krop, I., Loi, S., Loibl, S., Mueller, V., Oliveira, M., ... Winer, E.

**Tucatinib vs Placebo, Both in Combination With Trastuzumab and Capecitabine, for Previously Treated ERBB2 (HER2)-Positive Metastatic Breast Cancer in Patients With Brain Metastases: Updated Exploratory Analysis of the HER2CLIMB Randomized Clinical Trial.**

*JAMA oncology*, 9(2), 197–205.

[Read More](#)

VanOudenhove, J., Halene, S., & Mendez, L.

**Is it the time to integrate novel sequencing technologies into clinical practice?.**

*Current opinion in hematology*, 30(2), 70–77.

[Read More](#)

Pagani, O., Walley, B. A., Fleming, G. F., Colleoni, M., Láng, I., Gomez, H. L., Tondini, C., Burstein, H. J., Goetz, M. P., Ciruelos, E. M., Stearns, V., Bonnefoi, H. R., Martino, S., Geyer, C. E., Jr, Chini, C., Puglisi, F., Spazzapan, S., Ruhstaller, T., Winer, E. P., Ruepp, B.

**SOFT and TEXT Investigators and the International Breast Cancer Study Group (a division of ETOP IBCSG Partners Foundation) . Adjuvant Exemestane With Ovarian Suppression in Premenopausal Breast Cancer: Long-Term Follow-Up of the Combined TEXT and SOFT Trials.**

*Journal of clinical oncology : official journal of the American Society of Clinical Oncology*, 41(7), 1376–1382.

[Read More](#)

Francis, P. A., Fleming, G. F., Láng, I., Ciruelos, E. M., Bonnefoi, H. R., Bellet, M., Bernardo, A., Climent, M. A., Martino, S., Bermejo, B., Burstein, H. J., Davidson, N. E., Geyer, C. E., Jr, Walley, B. A., Ingle, J. N., Coleman, R. E., Müller, B., Le Du, F., Loibl, S., Winer, E. P.

**SOFT Investigators and the International Breast Cancer Study Group (a division of ETOP IBCSG Partners Foundation) . Adjuvant Endocrine Therapy in Premenopausal Breast Cancer: 12-Year Results From SOFT.**

*Journal of clinical oncology : official journal of the American Society of Clinical Oncology*, 41(7), 1370–1375.

[Read More](#)

Mandell, J. D., Cannataro, V. L., & Townsend, J. P.

**Estimation of Neutral Mutation Rates and Quantification of Somatic Variant Selection Using *cancereffectsizer*.**

*Cancer research*, 83(4), 500–505.

[Read More](#)

Maduka, R. C., Tai, K., Gonsai, R., DeWalt, N., Chetty, A., Brackett, A., Olino, K., Schneider, E. B., & Ahuja, V.

**Indoor Versus Outdoor: Does Occupational Sunlight Exposure Increase Melanoma Risk? A Systematic Review.**

*The Journal of surgical research*, 283, 274–281.

[Read More](#)

Yap, T. A., LoRusso, P. M., Wong, D. J., Hu-Lieskovan, S., Papadopoulos, K. P., Holz, J. B., Grabowska, U., Gradinaru, C., Leung, K. M., Marshall, S., Reader, C. S., Russell, R., Sainson, R. C. A., Seal, C. J., Shepherd, C. J., Germaschewski, F., Gliddon, D., Stern, O., Young, L., Brewis, N., ... Morrow, M.

**A Phase 1 First-in-Human Study of FS118, a Tetravalent Bispecific Antibody Targeting LAG-3 and PD-L1 in Patients with Advanced Cancer and PD-L1 Resistance.**

*Clinical cancer research : an official journal of the American Association for Cancer Research*, 29(5), 888–898.

[Read More](#)

Yip, Z., & Zeiden, A. M.



[Read More](#)

In addition to the many screening events available to the public via the Yale New Haven Health Mobile Mammography Unit, hospital employees had the opportunity to schedule breast imaging on “Love Yourself Day.” Love Yourself Day took place on Valentine’s Day and served as a reminder for women to stay on top of timely health screenings, including mammograms.

Jacqueline Crenshaw, Senior Manager of Breast Imaging, and her outreach team, Sherena Harris and Jenitza Irizarry, brainstormed and created this event with Dr. Andrea Silber to encourage employees to take time to schedule their breast imaging. More than 25 exams were scheduled, and the team also provided breast education using breast molds and handouts.



[Read More](#)

Recently on Yale Cancer Answers, nephrologist Dr. Anushree Shirali discussed the complex care of our patients who have developed kidney dysfunction and how certain immune checkpoint inhibitors can have kidney related adverse effects. Listen on Connecticut Public Radio or download our podcast from iTunes.



Xie, Z., & Zeldin, A. M. .  
**CHIPing away the progression potential of CHIP: A new reality in the making.**  
*Blood reviews*, 58, 101001.  
[Read More](#)

## Funding and Award Opportunities

### YCCI Educational Funding Support Opportunities

- **YCCI Multidisciplinary Post-Doctoral Training Program in Translational Research:** provide an opportunity for Yale post-doctoral trainees in the Schools of Medicine, Nursing, Public Health, Engineering and Applied Science or other appropriate Departments in the Graduate School to receive up to 2 years devoted to training across the full span of clinical and translational research focused on human health.

**Application Deadline:** March 10, 2023

[Read More](#)

- **YCCI Multidisciplinary Pre-Doctoral Training Program in Translational Research:** aims to identify and support a representative and diverse group of outstanding trainees who specifically want to pursue careers in clinical and translational research; to train them in the use of state-of-the-art research tools; to enhance their abilities to work collaboratively in complex multidisciplinary research teams; to provide outstanding mentoring (including concordant mentoring) by experienced and diverse faculty that support the trainee's long-term professional development.

**Application Deadline:** March 10, 2023

[Read More](#)

### Lung Cancer Research Foundation 2023 Grants

- **LCRF Leading Edge Research Grant Program:** to fund innovative projects across the full spectrum of basic, translational, clinical, epidemiological, health services, early detection, disparities, and social determinants of health research. 2023 LCRF Leading Edge Research Grants will provide \$150,000 over a period of two years
- **LCRF Research Grant on Early Detection and Pre-Neoplasia in Lung Cancer:** focused on identifying, characterizing, and developing approaches and techniques that will allow early detection and/or risk reduction of lung cancer and gaining insight into pre-neoplastic processes in the lungs.
- **LCRF Research Grants on Understanding Resistance in Lung Cancer:** focused on understanding development, prevention, and therapy of resistance by supporting research projects that are identifying, characterizing, treating, or preventing resistance to therapies in lung tumor cells, tissues, mouse models, and/or patients.

**Letters of Intent Due:** March 10, 2023

[Read More](#)

### NY Academy of Sciences: Innovators in Science Award: CANCER IMMUNOLOGY

The 2024 Innovators in Science Award will recognize achievements in

Cancer Immunology. We welcome nominations from government, non-profit, or equivalent institutions around the world, as well as from the Award's own Scientific Advisory Council, composed of renowned science and technology leaders. Prize winners will be chosen by a panel of judges independently selected by the New York Academy of Sciences, and the Awards will be conferred at a ceremony in early 2024.

**Internal Submission Deadline:** March 13, 2023


[Read More](#)

### Diversity and Inclusion in Breast Cancer Research

The following research awards are designed with the primary goal of increasing diversity in the oncology workforce and breast cancer research. These awards are made possible through the support of the Breast Cancer Research Foundation (BCRF).

- **Career Development Award:** Full Application Due: March 13, 2023
- <https://old-prod.asco.org/career-development/grants-awards/funding->

The Care of Patients with Kidney Disease and Cancer



Anushree Shirali, MD  
Associate Professor of Medicine (Nephrology)

Sunday, February 26th at 7:30pm  
Listen live on WNPR or stream via [ctpublic.org](http://ctpublic.org)  
Download our podcast on iTunes

YaleNewHavenHealth  
Smilow Cancer Hospital

Yale CANCER CENTER  
A Comprehensive Cancer Care Enterprise  
by the National Cancer Institute

[Read More](#)

We are excited to announce that applications are now being accepted for our inaugural New Graduate RN Ambulatory Fellowship Program!

If you are interested in starting your career in oncology nursing in the outpatient setting, Smilow Cancer Hospital offers a supportive, nine-month fellowship program with on-the-job mentorship by Connecticut's top oncology nurses leading to a job within Ambulatory Smilow. Key elements of our program include: classroom and simulation training, hands-on chemotherapy skills training, as well as 1:1 preceptor support.

**New Graduate RN Ambulatory Fellowship Program**  
**APPLY TODAY**

Start your oncology nursing career in the outpatient setting where we offer a 9-month onboarding program with facilitated mentorship leading to a job in one of our Smilow ambulatory settings

**Our program begins in July 2023**

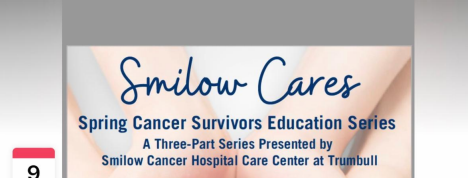


YaleNewHavenHealth  
Smilow Cancer Hospital

Yale CANCER CENTER  
A Comprehensive Cancer Care Enterprise  
by the National Cancer Institute

[Read More](#)

Smilow Cares: Spring Cancer Survivors Education Series



**Smilow Cares**  
Spring Cancer Survivors Education Series  
A Three-Part Series Presented by  
Smilow Cancer Hospital Care Center at Trumbull

9

THURSDAY, MARCH 9, 2023 AT 6:00 PM - 7:30 PM EST  
**Smilow Cares: Spring Cancer Survivors Education Series**  
Online event

Thu, Mar 9 Thu, Apr 13 Thu, May 11

[Learn More](#)



- <https://old-prod.asco.org/career-development/grants-awards/funding-opportunities/career-development-award>
- **Young Investigator Award:** Full Application Due: March 13, 2023
- <https://old-prod.asco.org/career-development/grants-awards/funding-opportunities/young-investigator-award>

### **AHEAD (Advancing Head and Neck Cancer Early Detection Research) (U01)**

The goal of this FOA is to accelerate translation of research to improve early detection of head and neck cancers (HNC). This initiative will encourage development, evaluation, and validation of biomarkers for risk assessment, detection, and molecular diagnosis and prognosis of early HNC.

**Application Deadline:** March 14, 2023

**Read More**

### **Small Research Grants for Analyses of Gabriella Miller Kids First Pediatric Research Data (R03)**

The NIH Common Fund has established the Gabriella Miller Kids First Pediatric Research Program (Kids First) to develop a pediatric research data resource populated by genome sequence and phenotypic data that will be of high value for the communities of investigators who study the genetics of childhood cancers and/or structural birth defects.

**Application Deadline:** March 16, 2023

**Read More**

### **AACR Cancer Disparities Research Fellowship**

The AACR Cancer Disparities Research Fellowship represents an effort to encourage and support postdoctoral or clinical research fellows to conduct cancer disparities research and to establish a successful career path in this field. The proposed research may be in basic, translational, clinical, or population sciences and must have direct applicability and relevance to cancer disparities.

**Application Deadline:** March 23, 2023

**Read More**

### **AACR Breast Cancer Research Fellowships**

The AACR Breast Cancer Research Fellowships represent a joint effort to encourage and support postdoctoral or clinical research fellows to conduct breast cancer research and to establish a successful career path in this field. The research proposed for funding may be basic, translational, clinical, or epidemiological in nature and must have direct applicability and relevance to breast cancer.

**Application Deadline:** March 23, 2023

**Read More**

### **Yale Head and Neck SPORE (YHN-SPORE) Career Enhancement Program (CEP)**

The CEP of the Yale Head and Neck SPORE has been established to educate the next generation of investigators committed to translational research in head and neck cancer. The CEP will provide support to promising junior investigators and/or establish investigators who have not previously conducted head and neck cancer focused research.

**Letter of Intent Due:** Friday March 24, 2023

**Read More**

### **Diversity and Inclusion in Breast Cancer Research**

The following research awards are designed with the primary goal of increasing diversity in the oncology workforce and breast cancer research. These awards are made possible through the support of the Breast Cancer Research Foundation (BCRF).

- **Career Development Award:** Full Application Due: March 13, 2023

**Read More**

- **Young Investigator Award:** Full Application Due: March 13, 2023

**Read More**

### **AHEAD (Advancing Head and Neck Cancer Early Detection Research) (U01)**

The goal of this FOA is to accelerate translation of research to improve early

Our amazing team in radiation oncology celebrated a special little boy's 10th birthday last week with a surprise party to recognize his polite and spirited attitude. The nursing staff came together to purchase decorations and bake cupcakes for Sam's birthday and he was surprised beyond belief!

"You can just tell how grateful he was when he went around to each staff member, said thank you and shared a hug with everyone," Courtney Willard, RN, BSN, Assistant Patient Service Manager, shared.



**Learn More**



The Center for Thoracic Cancers @YaleThoracic offers patients the option of #roboticbrochoscopy when needing a lung #biopsy. Learn more about this procedure <https://youtu.be/HVgR5moqPZg>.



.@DrRoyHerbstYale participated in the @AACR Early-career Hill Day today to accompany a group of early-career investigators to visit @rosadelauro and share the importance of funding for #cancerresearch.



Our Center for Community Engagement and Health Equity strives to achieve #healthequity and eliminate the burden of #cancer for all, across Connecticut.



Join @SmilowCancer @YaleCancer and wear blue on Friday, 3/3 for #colorectalcaner awareness and remind your loved ones to get screened. New guidelines recommend screening for all men and women 45 years and older.

The goal of this FOA is to accelerate translation of research to improve early detection of head and neck cancers (HNC). This initiative will encourage development, evaluation, and validation of biomarkers for risk assessment, detection, and molecular diagnosis and prognosis of early HNC.

**Application Deadline:** March 14, 2023

**Read More**

### Small Research Grants for Analyses of Gabriella Miller Kids First Pediatric Research Data (R03)

The NIH Common Fund has established the Gabriella Miller Kids First Pediatric Research Program (Kids First) to develop a pediatric research data resource populated by genome sequence and phenotypic data that will be of high value for the communities of investigators who study the genetics of childhood cancers and/or structural birth defects.

**Application Deadline:** March 16, 2023

**Read More**

### Yale Head and Neck SPORE (YHN-SPORE) Career Enhancement Program (CEP)

The CEP of the Yale Head and Neck SPORE has been established to educate the next generation of investigators committed to translational research in head and neck cancer. The CEP will provide support to promising junior investigators and/or establish investigators who have not previously conducted head and neck cancer focused research.

**Letter of Intent Due:** March 24, 2023

**Read More**

### Yale Head and Neck SPORE (YHN-SPORE) Developmental Research Program (DRP)

The Yale Head and Neck SPORE's DRP provides seed money to investigators to support studies with a strong translational component that have the potential to evolve into, or be incorporated as, a full YHN-SPORE project or to generate preliminary data or evidence of collaboration for other new NIH grant applications.

**Letter of Intent Due:** March 24, 2023

**Read More**

### ASTRO-LUNGeity Residents/Fellows in Radiation Oncology Seed Grant

This seed grant fosters and develops the research careers of residents and fellows interested in radiation oncology-related basic, translational, and/or clinical research to benefit patients with lung cancer.

**Letters of Intent Due:** March 24, 2023

**Read More**

### Breast Cancer Research Program 2023 Awards

This funding supports innovative, high-impact research with clinical relevance that will accelerate progress to end breast cancer for Service Members, Veterans, and the general public.

- Breakthrough Award Levels 1 and 2
- Era of Hope Scholar Award
- Clinical Research Extension Award
- Transformative Breast Cancer Consortium Development Award (TBCCDA)

**Letters of Intent Due:** March 28, 2023

- Transformative Breast Cancer Consortium Award
- Breakthrough Award Level 3
- Breakthrough Award Level 4
- Innovator Award

**Letters of Intent Due:** March 29, 2023

**Read More**

### The ROS1+ Cancer Innovation Award

This award aims to fund high-risk, high-reward research projects focused on ROS1+ cancer. The one-year \$75,000 seed grant can be used for pre-clinical, translational, or clinical research and is open to investigators who hold a doctorate degree and a faculty appointment at an academic or non-profit research institution anywhere in the world.



Our next Smilow Shares w/Primary Care for #PCPs is March 7 at 5pm on #GastrointestinalCancers. Presenters: Beth Allard, MD; Amit Khanna, MD; @PamelaKunzMD; Justin Persico, MD @jpdaddy3; and Scott Thornton, MD.



Classifying #endometrial tumors by the mechanism of MMRd may inform clinical decision-making regarding cancer immunotherapy says a study from co-1st authors Ryan Chow @ScienceChow and Tai Michaels.



Watch @IreneGhobrial @DanaFarber @BrighamWomens deliver @YaleCancer Grand Rounds on her work in #multiplemyeloma and #earlydetection and prevention strategies



Dr. Jonathan Langdon @YaleRadiology and colleagues explored the management and care of #thyroidcancer during pregnancy from the radiologist's perspective.



Register for our next Post-ASH CME webinar series on #Lymphoma, featuring presentations from Drs. Scott Huntington @sfhYALE and Francine Foss. Join us Friday, March 3 at noon!



The #HER2CLIMB trial subgroup analysis shows survival benefits & delayed dev of new brain lesions, representing an important treatment option for patients w/ERBB2-pos #MBC, including those w/brain mets.



Join us online today at 12pm for #GrandRounds with Irene Ghobrial, MD @IreneGhobrial, of Harvard Medical School @harvardmed, on the topic of "The PROMISE of Early Detection and Interception in #Myeloma."



Watch Dr. David Rimm @RimmPathology present @YaleCancer Grand Rounds on his work in identifying companion diagnostics for #HER2 #targetedtherapies to reveal which patients may benefit and why.

profit research institution anywhere in the world.

**Letters of Intent Due:** March 31, 2023

[Read More](#)

### **The Chênevert Family Brain Tumor Center at Yale Developmental Research Awards**

The Chênevert Family Brain Tumor Center at Yale is pleased to announce Developmental Research Awards with first funding beginning 07/01/2023 to projects in amounts up to \$100,000 over two years.

The projects must focus on primary or metastatic brain tumors, and they must have a translational focus or high potential to lead to a translational project or a clinical trial.

**Internal Submission Deadline:** March 31, 2023

[Read More](#)

### **BCA Exceptional Project Grant**

Breast Cancer Alliance invites clinical doctors and research scientists at any stage of their careers, including post docs, whose current proposal is focused on breast cancer, to apply for an Exceptional Project Grant. This award recognizes creative, unique and innovative research and is open to applicants at institutions throughout the contiguous United States.

**Application Deadline:** March 31, 2023

[Read More](#)

### **BCA Young Investigator Grant**

To encourage a commitment to breast cancer research, Breast Cancer Alliance invites clinical doctors and research scientists who are in the early stages of their careers, including post docs, whose current proposal is focused on breast cancer, to apply for funding for the Young Investigator Grant. This grant is open to applicants at institutions throughout the contiguous United States. This is a two-year grant for a total of \$125,000, with half the grant award being paid out each year.

**Application Deadline:** March 31, 2023

[Read More](#)

### **ACS Research Priority Area: Screening**

Detecting cancer early saves lives. Unfortunately, the important benefits of cancer screening are not reaching enough people. The purpose of this RFA is to fund innovative research that will facilitate more widespread cancer screening and early detection culminating in reduced cancer mortality.

**Internal Submission Deadline:** April 3, 2023

[Read More](#)

### **HESI THRIVE Grant**

A proud partner of the **Biden Cancer Initiative**, THRIVE provides seed

grants for clinical and translational research and technology-based solutions that enhance our ability to predict when and how adverse effects may occur in patients who have received cancer treatment. THRIVE also supports the development of approaches to avoid or lessen these effects.

**Letters of Intent Due:** April 10, 2023

[Read More](#)

### **2023 Leslie H. Warner Postdoctoral Fellowships for Cancer Research**

The Fellowships will support early-stage promising trainees that are conducting innovative basic, translational, clinical, or population-based cancer research with a Yale Cancer Center member. Relevance of proposed research to our catchment area priorities is also encouraged. Candidates may have up to one year of postdoctoral experience from the time of application.

**Internal Submission Deadline:** April 10, 2023

[Read More](#)

### **NCCN, Fight CRC, and Pfizer Quality Improvement Initiative: Optimizing Biomarker-Directed Therapy in Metastatic Colorectal Cancer**

NCCN<sup>®</sup> is pleased to announce a collaboration with Fight Colorectal Cancer (Fight CRC) and Pfizer Global Medical Grants (GMG) to offer a new grant



Members of @yalederm and

@YaleBreast piloted a pamphlet to educate @SkinOfColor patients on the potential toxicities of #chemotherapy on their skin.



Congratulations to Michael Girardi, MD, @yalederm one of 70 physician-researchers elected to the Association of American Physicians (AAP).

## **Calendar**

### **Yale Cancer Center 2023 Post-ASH CME Series**

**March 3; 12:00 PM**

Scott Huntington, MD, MPH, MSc | Francine Foss, MD

[Learn More](#)

### **American Brain Tumor Association**

**March 4; 10:00 AM**

*Patient & Family Meetings: Low Grade Gliomas*

[Learn More](#)

### **Day of Discovery for Women's Health**

**March 4; 10:00 AM**

**55 Park Street; Auditorium**

Elena Ratner, MD, MBA | Daniel O'Neil, MD, MPH | Z. Ping Lin, PhD

[Learn More](#)

### **Yale Cancer Answers**

**March 5; 7:30 PM**

*Caring for Veterans with Cancer*

Michal Rose, MD

[Learn More](#)

### **Yale Cancer Center Grand Rounds**

**March 7; 12:00 PM**

**55 Park Street; Auditorium**

*When Watson and Crick Get linked: DNA Interstrand Crosslink Repair and Human Disease*

Agata Smogorzewska, MD, PhD

[Learn More](#)

### **Smilow Shares with Primary Care on Gastrointestinal Cancers**

**March 7; 5:00 PM**

Amit Khanna, MD | Pamela Kunz, MD | Justin Persico, MD | Scott Thornton, MD | Beth Allard, MD

opportunity seeking proposals for quality improvement initiatives focused on optimizing biomarker-directed therapy in metastatic colorectal cancer.

**Application Deadline:** April 10, 2023

[Read More](#)

[Learn More](#)

### **Smilow Shares: Colorectal Cancer**

**March 7-8; 7:00 PM**

Anne Mongiu, MD, PhD | Jeremy Kortmansky, MD | Kevin Du, MD, PhD, MSCI | Sidney Tuttle Bogardus, MD

[Learn More](#)

### **Biostatistics/Yale Cancer Center Seminar**

**March 8; 9:00 AM**

**47 College Street; 106A**

*Data-adaptive Estimation for Optimal Individualized Treatment Rules with Time-to-event Outcomes*

Oleksandr Savenkov, PhD

[Learn More](#)

### **Genetics RIP**

**March 8; 12:00 PM**

**SHM, I-Wing; 304**

Mariateresa Mazzetto | Madison Rackear

[Learn More](#)

### **General Internal Medicine Grand Rounds**

**March 9; 7:30 AM**

*Prognostication For Patients With Cancer: What Does The Internal Medicine Clinician Need To Know*

Vinay Rao, DO

[Learn More](#)

### **Therapeutic Radiology Grand Rounds**

**March 9; 9:00 AM**

**Smilow North Pavilion; LL505**

*TBN*

Zachary Corbin, MD, MHS

[Learn More](#)

### **Cancer Genetics and Prevention Program Seminar**

**March 9; 2:30 PM**

[Learn More](#)

### **Center for GI Cancers Journal Club**

**March 9; 4:15 PM**

Sajid A Khan, MD, FACS, FSSO

[Learn More](#)

### **Smilow Cares: Spring Cancer Survivors Education Series**

**March 9; 6:00 PM**

**Trumbull Care Center**

*The Relation Between Lymphedema and Nutrition*

Tomara Petrozzi, PT, DPT, CLT

Tatiana Petrazzi, PT, DPT, CEI

[Learn More](#)

**16th Annual Interdisciplinary Prostate Cancer Congress and Other Genitourinary Malignancies**

**March 10-11; 7:30 AM**

**Barclay Street; NY, NY**

Daniel P. Petrylak, MD

[Learn More](#)

**Endocrinology Clinical Dilemma**

**March 10; 12:00 PM**

**BCMM 206/208**

*TBD*

[Learn More](#)

**YSM Biorepository Open Information Session**

**March 10; 2:00 PM**

Chen Liu, MD, PhD | Wade Schulz, MD, PhD

[Learn More](#)

**Yale Cancer Answers**

**March 12; 7:30 PM**

*Colorectal Cancer Awareness Month*

Laura Baum, MD, MPH

[Learn More](#)

**Genetics Seminar Series**

**March 14; 11:30 AM**

**Anlyan Center; N107**

*Genetic conflicts during meiosis drive the rapid evolution of essential chromatin proteins*

Harmit Malik, PhD

[Learn More](#)

**Human and Translational Immunology Seminar Series**

**March 14; 4:00 PM**

**BML 131**

*Maternal Immunity and the Development of the Neonatal Intestinal Microbiota"*

Timothy Hand, PhD

[Learn More](#)

**Biostatistics/Yale Cancer Center Seminar**

**March 15; 9:00 AM**

**47 College Street; 106A**

*Risk Projection for Time-to-Event Outcome Leveraging Summary Statistics with Source Individual-Level Data*

Jiayin Zheng, PhD

[Learn More](#)

**Therapeutic Radiology Grand Rounds**  
**March 16; 9:00 AM**  
**Smilow North Pavilion; LL505**  
*Proton Therapy Recent Developments*  
Christian Hyde, MD  
**Learn More**

**Yale CCEH Rising Stars in Hematology**  
**Series: Francesca Vinchi, Ph.D.**  
**March 17; 12:00 PM**  
*Heme- and iron-mediated Phenotypic and Functional Switching of Macrophages*  
TBD  
**Learn More**

**Immunobiology Seminar Series**  
**March 23; 10:30 AM**  
**Anlyan Center Auditorium; N-107**  
*SWI/SNF Complexes in Development and Disease*  
Diana Hargreaves, PhD  
**Learn More**

**Pharmacology Yung-Chi Cheng Lecture Series**  
**March 23; 4:00 PM**  
**BML B131**  
*HIV Drug Discovery: Past, Present and Lessons for the Future*  
Daria Hazuda, PhD  
**Learn More**

**Center for Thoracic Cancers Seminar Series**  
**March 24; 11:45 AM**  
**BML Auditorium**  
Kwok-Kim Wong, MD, PhD  
**Learn More**



**Share your news!**

Please submit your recent publications, awards, and grant announcements to:

**[Renee Gaudette](#)**

Director, Public Affairs and Communications

[Update Profile](#) | [Constant Contact Data Notice](#)

Sent by renee.gaudette@yale.edu powered by



Try email marketing for free today!