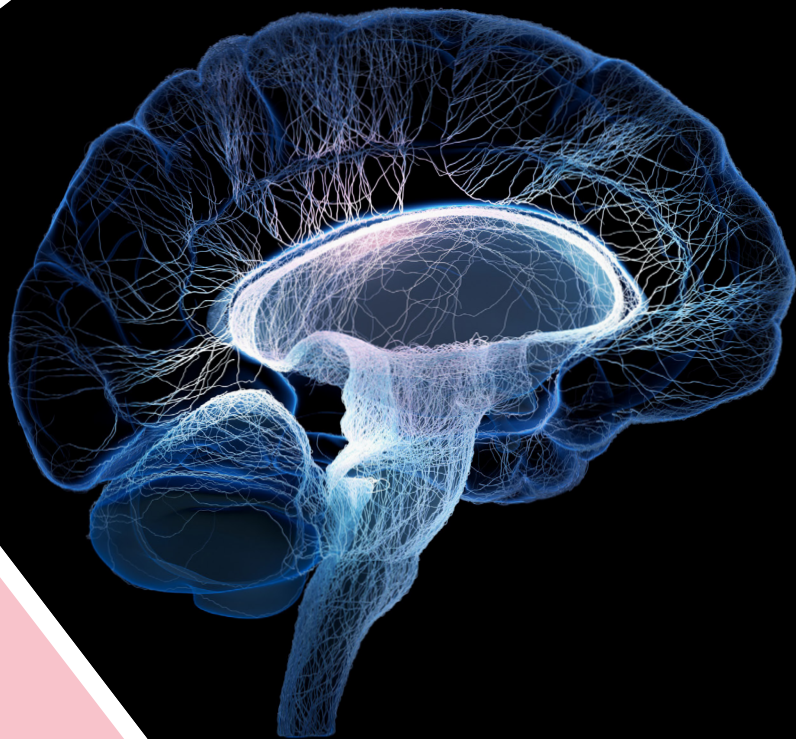


2021 Update: What's New in the Field of Multiple Sclerosis



Friday, May 14, 2021

Live Virtual Webinar

For more information, please visit, www.cme.yale.edu

Yale Medicine

Multiple Sclerosis (MS) is the most frequent non-traumatic cause for disability among young adults in North America and Europe. Worldwide, about 2.5 million people are affected. In the United States alone, almost 1 million individuals suffer from MS. There have been tremendous strides taken in the field of multiple sclerosis over the past several years including new diagnostic criteria & new treatment strategies.

This webinar is designed to educate clinicians and other health care professionals on advances in the diagnosis and management of patients with multiple sclerosis.

COURSE DIRECTOR

Sharon S. Stoll DO, MS
Assistant Professor, Department of Neurology
Division of Multiple Sclerosis and Neuro-Immunology
Yale School of Medicine

LEARNING OBJECTIVES

The presentations will enable participants to:

- ~ Examine the current understanding of the genetics and pathophysiology of multiple sclerosis
- ~ Discuss new and emerging image modalities for MS patients and the risk benefit ratio of newer agents compared to older therapies
- ~ Review MS Covid registry data as well as vaccination during the time of COVID
- ~ NMOSD: Review of current and future disease modifying therapies
- ~ Explore current MS apps and technology to better educate and evaluate patients

This live activity is approved for AMA PRA Category 1 Credits(TM).

The Yale School of Medicine, Department of Neurology is grateful to their supporters. They are acknowledged in all conference materials.

To register and view the conference program, please visit www.cme.yale.edu
To contact Yale CME: cme@yale.edu or 203.785.4578

