



# Yale SCHOOL OF PUBLIC HEALTH

## Linking science and society

For more than a century, the Yale School of Public Health has led the transformation of the science and practice of public health across the globe. In 2024, YSPH became a fully independent school at Yale University, elevating our voice and contribution to the state of public health locally, nationally and globally.

### A Call to Action

In this moment of transition for our school, the world and its health status is changing. Existing public health tools and systems are no longer adequate for the health challenges ahead:

- **Social epidemics** such as violence, substance use, mental illness, and loneliness are driving dramatic drops in life expectancy.
- Globally, **the health workforce** is insufficient and poorly supported.
- The effect of **climate change** on health is accelerating.
- Despite advances in **health technology**, data are not collected or used equitably.
- **Distrust of science**, and in higher education, is increasing.

### Our Plan

We have an opportunity to lead the transformation of public health to address these challenges. This strategic plan is our response. Through this plan, we will link science and society, helping communities everywhere to thrive and leading the world to a healthier future.

## Our vision, mission, and values

**Vision:** Linking science and society, making public health foundational to communities everywhere.

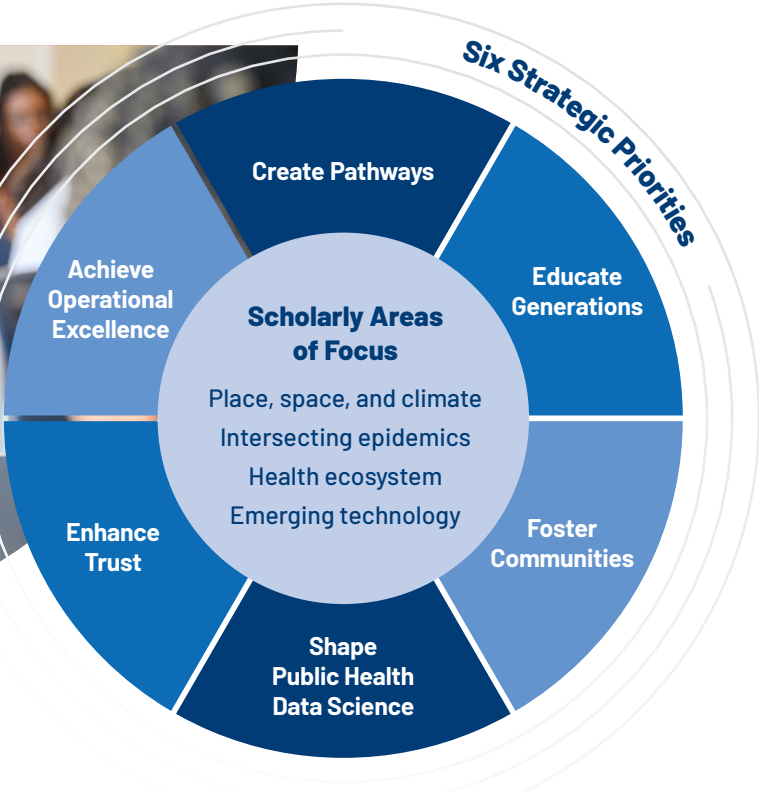
**Mission:** Our mission is to educate and equip the best public health scientists, practitioners, and leaders to develop systems-level solutions for a healthier society.

**Values:** Innovation · Leadership · Justice · Community · Inclusion

For more information  
about our Strategic Plan:

[sph.yale.edu/strategic-plan](https://sph.yale.edu/strategic-plan)





## Our Strategic Priorities

### Create Pathways for Translating Outstanding Science into Local and Global Health Impact

We will conduct world-class research and develop entrepreneurial frameworks that use our scholarship to tangibly improve societal well-being.

### Foster Interconnected, Inclusive, and Interdisciplinary Public Health Communities, Within and Beyond Yale

We will invest in building resilient public health communities in our school, at Yale, in New Haven, Connecticut, and beyond.

### Enhance Trust in the Science and Practice of Public Health

We will support our students, faculty members, alumni, staff, and external partners in serving as trusted spokespeople for, and translators of, public health science.

### Educate Generations of Public Health Leaders

We will ensure our students excel in understanding, conducting, and using rigorous science to advance population-level health.

### Shape the Future of Public Health Data Science & Artificial Intelligence

We will meld ethics and equity with cutting-edge methods to shape how health-oriented data science is structured and used.

### Achieve Strategic Imperatives through Operational and Financial Excellence

We will strengthen the administrative and financial management systems that are fundamental to our ability to achieve our mission.

## Our Scholarly Areas of Focus

**Our areas of focus guide our scholarly pursuits.** They serve as areas of scientific excellence, distinction, and influence. They reflect current and aspirational research strengths of our school, the university's science priorities, and our assessment of the globe's most pressing health challenges.



### How place, space, and climate impact health

Built and natural environments influence diseases ranging from infection, to cancer, to mental illness. We examine how various exposures – environmental, chemical, and social – interact to affect health, and then develop systems-level solutions that improve both environmental quality and human well-being.



### Cost of and connection to the health ecosystem

The health ecosystem is a complex web of formal and informal care providers, government agencies, elected officials, nonprofit organizations, and private corporations. We work to optimize policies, incentives, and systems that can drive equitable, efficient, high-quality health ecosystems around the globe.



### Reducing harm from intersecting epidemics

Social, infectious, and chronic disease epidemics mutually reinforce and are often rooted in structural disparities. We develop, evaluate, and disseminate strategies to support communities in their quest for emotional, social, and physical well-being.



### The health implications of emerging technology

Artificial intelligence tools, genomics, wearable sensors, and other quickly evolving technologies have substantial effects on health, health equity, and health privacy. We create and integrate these tools for social good and defining how to protect us from their potential health harms.