

February 17, 2017

## Announcements

### Care Centers Celebrate 5 Years

It was an honor to celebrate the 5-year anniversary of our first Care Centers earlier this month with the faculty and staff of all 10 Care Centers at the New Haven Country Club. The full integration of our Care Centers is evident throughout the organization and it is a true testament to the dedication of every one of the physicians, nurses, and staff members at each of our locations. The availability of Smilow Cancer Care in 6 of the 8 counties of Connecticut in just 5 short years is a remarkable accomplishment to celebrate!



[View More Photos >>](#)

### New Closer to Free Campaign Launches

Last week, Smilow Cancer Hospital launched a new series of three commercials supporting our Closer to Free campaign and featuring three of our patients and riders in the annual Ride. The campaign is slated to run for 18 weeks, including broadcast

*from the desk of*  
**Charles S. Fuchs, MD, MPH**  
Director, Yale Cancer Center  
and Physician-in-Chief  
Smilow Cancer Hospital

# Yale NewHaven Health

## Smilow Cancer Hospital

---

# Yale

**CANCER  
CENTER**

A Comprehensive Cancer Center Designated  
by the National Cancer Institute



### Recent News

Read recent articles featuring experts from  
Yale Cancer Center

[News Center >>](#)

television, cable television, movie cinemas, radio, and online digital video. In addition, the radio campaign supports our Care Centers and community access to Smilow Cancer Care.

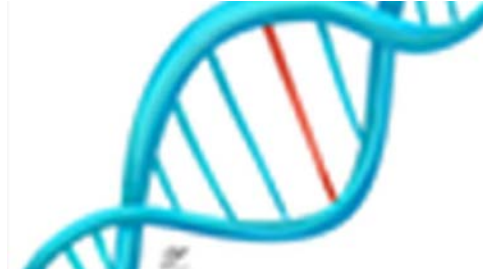
Please take a moment to visit the [Closer to Free site](#) and watch and share Gary, Erin, and Ryan's stories.



**Town Hall**

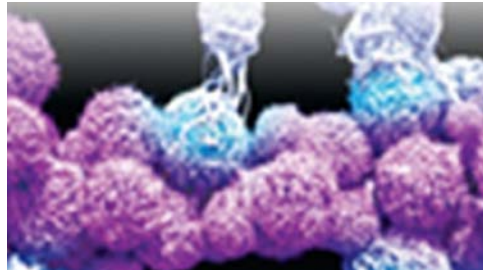
**LATEST ARTICLES:**

**Study points to potential new brain cancer treatment**



[Read More >>](#)

**Immunotherapy May Need To Have Its Own Value Model**



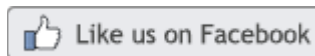
[Read More >>](#)

**Yale study: 1 in 4 teen e-cigarette users have tried 'dripping'**



[Read More >>](#)

**Join Smilow Cancer Hospital on Facebook**



I hope you will join me at Yale Cancer Center Grand Rounds at noon on Tuesday, February 21 in the Smilow Auditorium for a Town Hall presentation. I will share with you my vision for the future for Yale Cancer Center and Smilow Cancer Hospital and our Care Centers, highlighting our strengths and the opportunities across our clinical, research, and educational missions going forward. A livestream option will also be available for those of you off campus through [Skype](#), or by call-in to (203) 688-2072.

### AbbVie-Yale Symposium in Immunobiology

On behalf of Richard Flavell, Akiko Iwasaki, and Jordan Pober, the Yale Joint Steering Committee that oversees the AbbVie-Yale Collaboration, you are cordially invited to attend the 3rd Annual AbbVie-Yale Symposium in Immunobiology on March 31 at 9:00 am at the Yale West Campus Conference Center. The theme of this year's symposium is Immuno-oncology.

Attendance is free; please [register online](#) in advance of the event. Registration will close at 5pm on March 10. If you have any questions or issues with registration, please contact [Tiffany Lin](#).

[Learn More >>](#)

## Notables

**Jeff Geschwind, MD**, Chair of the Department of Radiology and Biomedical Imaging, has been appointed the inaugural **President of the Society of Interventional Oncology**. The society is the only membership-based group dedicated to interventional oncology, and will plan the annual World Conference on Interventional Oncology, which is scheduled to be held in Boston in June.

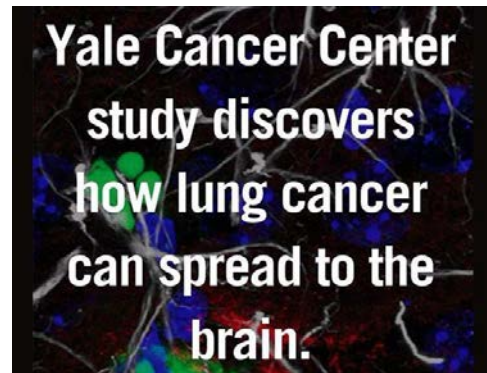
[Learn More >>](#)

Please join the family and friends of **Dr. Lawrence Solomon** for a memorial service on Saturday, February 18 at 11:00am at the Unitarian Society of New Haven, 700 Hartford Turnpike, Hamden, CT. Dr. Solomon was a deeply respected and loved physician by colleagues and patients alike. Dr.

### LATEST POSTS:

More people die of lung cancer each year than breast, colon, and prostate cancers combined. Researchers at Yale Cancer Center recently set out to study how one particularly deadly form of lung cancer, lung adenocarcinoma (LUAD) spreads from the lungs to the brain.

The team, led by Don Nguyen, PhD, analyzed both patient RNA and studied animal models of the disease, and found that the aggressive LUAD cells that survived outside of the lungs were able to do so by expressing certain proteins that shield them from harm. The study findings have already led to collaboration with a pharmaceutical company to begin testing drugs to target this process.



[Read More >>](#)

Join us on February 24th at 6:30 pm for "Get In Touch With Breast Cancer," an event designed for mothers and daughters to learn more about breast health and awareness. Presented by the Smilow Cancer Genetics and Prevention Program and The Get In Touch Foundation, the event will feature guest speaker Betsy Nilan, president of the foundation and an advocate of breast cancer awareness. Make time to join us for this important event - RSVP at (203) 200 - 4362 by February 17th!

Solomon, in collaboration with Leslie Blatt, APRN, founded the Yale New Haven Hospital Palliative Care Program, providing supportive care to patients and their families facing serious illness. His leadership and pioneering work in Palliative Care at Yale resulted in the foundation of a palliative care program that continues to thrive and expand to serve our most vulnerable patients.

## Research in the News

### Genome analysis helps keep deadly brain cancer at bay for five years

An analysis of a patient's deadly brain tumor helped doctors at Smilow Cancer Hospital identify new emerging mutations and keep a 55-year old woman alive for more than five years, researchers report in the journal *Genome Medicine*.

"We were able to identify the molecular profile at each recurrence," said Dr. Murat Günel. "The molecular make-up of the cancer changed after each treatment and with time, but we were able to adjust treatments based on those profiles."

[Read More >>](#)

### Limiting lung cancer's spread and growth in the brain

More people die of lung cancer each year than breast, colon, and prostate cancers combined. One particularly lethal form of the disease is lung adenocarcinoma or LUAD, which afflicts both smokers and non-smokers. In many patients diagnosed with LUAD, tumors cells have already spread to the brain, leading to decreased quality of life and low survival rates. A Yale Cancer Center research team conducted a study to determine how those tumor cells manage to grow outside the lungs.

The researchers found that aggressive LUAD cells expressed a number of proteins that allow them to persist outside the lungs in small numbers. They observed that the tumor cells that spread to the brain were able to utilize an extracellular molecule, which shields them from their hostile surroundings.



**Get in Touch With Breast Cancer**

A mother/daughter event focusing on breast health and awareness.

**When?** February 24th, 6pm

**Where?** 1450 Chapel St. New Haven, CT, Room MSK

**Why?** Over 2.8 million breast cancer survivors are alive today thanks to early detection.

[Read More >>](#)

Check out this chocolate mousse recipe from Cook for Your LIFE! It's perfect to enjoy if your mouth is feeling sore or dry after treatment, or even if you're just craving something sweet for Valentine's Day. To make it, just slice and pit the avocado, then throw it into the blender with the other ingredients and bring it all together.

Try it and let us know what you think!



**Chocolate Mousse**

This high-calorie, flavor packed treat is perfect for something to snack on even with a sore or dry mouth.

**Ingredients:**

- 1 ripe Hass avocado
- 2-3 tablespoons agave nectar or honey
- 1/4 cup unsweetened cocoa powder
- 1/2 teaspoon vanilla extract
- Small pinch salt
- 2 tablespoons almond, soy, or regular milk
- 1 cup washed raspberries (optional)

[Read More >>](#)

Take a few minutes to listen to an interview on Yale Cancer Answers with lung cancer survivor, Rosemary McCauley. Rosemary is an inspiration! #lcsms

[Read More >>](#)

## Employee Profile: Bob Scott

Bob Scott, courier for Yale Transport, Receiving & Storage (TR&S), knows his way around Yale's Central and Medical campuses better than anyone. He is responsible for the pick-up and delivery of important documents and materials and handles payroll distribution for Yale Dining, Yale Physical Plant, and other small departments. TR&S provides support for campus moves, storage options, passenger transport, and courier services.



Twice a day Bob is responsible for deliveries to and from the W.M. Keck Laboratory. He commented that it is usually plant-based materials that need to be safely transported, and he makes sure they arrive in a timely and efficient manner. He also handles several deliveries a month for Smilow Cancer Hospital and Yale Cancer Center. In a day, Bob can travel anywhere from 20-30 miles around campus. A lot of the deliveries are time sensitive and he has a regimented schedule planned out each day, but is always willing to try and fit in unplanned requests.

"In this job you have to be personable and able to keep your cool when people are upset about a delayed outside delivery or other situation beyond our control," said Bob. "You also have to be aware of your surroundings at all times while driving, as pedestrian traffic can pose challenges. I make sure that those around me are safe, and that I get to where I am going safely as well."

Bob has been with TR&S for three years, and before that, was a cook for Yale University for 30 years. Gerry Apuzzo, Assistant Manager,



[Read More >>](#)

Until recently, patients over 70 years old with small cell lung cancer (SCLC) were mostly treated with chemotherapy. Dr. Roy Decker recently set out to see how modern advances in radiation therapy may improve outcomes for older patients. Using data from the National Cancer Database, his team found that SLSC patients over 70 can see up to a 6 month increase in survival time with combined chemotherapy and radiation, as opposed to chemotherapy alone.

"I think our paper also highlights that physicians are already doing a good job of selecting patients for this therapy, and I hope the study reinforces that," he said. "I also hope it makes physicians who aren't using this aggressive therapy consider it for elderly patients."



[Read More >>](#)

When Gary Dangle found out he had throat cancer in 2008 during a routine physical, he was fortunate to be placed in the capable hands of one of the country's most noted head and neck surgeons, Dr. Clarence Sasaki, as well Drs. Yung H. Son and Hari Deshpande. He now participates annually in our Closer to Free Ride, and has gratified a childhood love of baking by opening a

Warehouse & Shipping for TR&S, commented, "Bob is one of the hardest workers here. He is always on time and has never called out sick. No matter how much work he has, he never complains and always makes sure his deliveries and pick-ups are done by the end of the day. I have never known him to be in a bad mood and I know that I can always depend on him to get the job done."

## Funding and Award Opportunities

All current funding opportunities are archived on the Yale Cancer Center website, and searchable by topic, funding agency, and due date. Please check the site often for new opportunities.

[Learn More >>](#)

### Translational Cancer Research Grant

The V Foundation seeks to support translational research projects within the scope of all types of cancers.

If you would like to be considered for nomination, please submit a one-page summary of your proposed project and a copy of your CV to [edward.kaftan@yale.edu](mailto:edward.kaftan@yale.edu) by **February 21st**. If selected for nomination, the full application would be due May 2nd.

### 2017 ALCF-IASLC Joint Fellowship Award

The Bonnie J Addario Lung Cancer Foundation, in collaboration with the International Association for the Study of Lung Cancer is pleased to announce their second joint Fellowship Award to support novel, innovative and translational research with potential of high clinical impact on the early detection of lung cancer.

**Application Deadline:** March 1, 2017

[Learn More >>](#)

### Stand Up To Cancer - LUNgevity - American Lung Association Lung Cancer Interception Dream Team

This grant will provide up to \$7 million to solve key problems in lung cancer interception research.

**Letter of Intent Due:** March 8, 2017

bakery in Milford. Read more about Gary's journey as well as those of other survivors who have come together to share what it means to be closer to free.



[Read More >>](#)

## Follow Yale Cancer Center on Twitter

Follow us on [twitter](#)

### LATEST TWEETS:

-  Join us: Promise of Personalized Medicine for [#LungCancer](#) on March 2 [#lscsm](#)
-  [#Genome](#) analysis helps keep deadly [#braintumor](#) at bay for 5 yrs for patient at [#Smilow Cancer Hospital](#) [#btsm@YNHH](#)
-  Handmade [#Valentine's](#) for our patients today. [#valentinesday2017](#)
-  Stream our Yale Cancer Answers [#podcast](#) - an interview w/ Dr. Sarah Goldberg on the latest in [#lungcancer](#) treatment
-  Phase I [#clinicaltrial](#) of targeting CPI-444 and in combo w/ Atezolizumab for pts with advanced [#melanoma@YaleCancer](#)
-  [@mirwin\\_yale](#) will present "Influence of Weight Management and Physical Activity on Cancer Treatment Side Effects" at [#NatlCancerForum](#)
-  Take a few minutes to listen to an interview w [#lungcancer](#) survivor,

[Learn More >>](#)

### **Program in Innovative Therapeutics for Connecticut's Health (PITCH)**

With a grant from the State of Connecticut's Bioscience Innovation Fund, this three-year, \$10 million program provides translational research resources to generate prototype therapeutics that address unmet clinical needs.

**Deadline:** March 15, 2017

Please contact [Jane Merkel](#) for more information

[Application >>](#)

### **SU2C-Lustgarten Foundation Pancreatic Cancer Interception Dream Team**

This grant will provide up to \$7 million over a four-year term to advance innovative approaches to intercept the disease-causing process.

**Letter of Intent Due:** March 22, 2017

[Learn More >>](#)

### **Exploratory Grants in Cancer Epidemiology and Genomics Research (R21)**

This FOA invites applications for research on cancer epidemiology, genomics, and risk assessment.

**Application Receipt/Submission Date:** March 22, 2017

[Learn More >>](#)

### **Pilot and Feasibility Studies Evaluating the Role of RNA Modifications (the 'epitranscriptome') in Cancer Biology (R21)**


This FOA encourages basic research into the role of RNA chemical modifications and their corresponding writers, readers and erasers in the initiation and progression of cancer.


**Application Receipt/Submission Date:** March 22, 2017


[Learn More >>](#)

### **Clinical and Translational Exploratory/Developmental Studies (R21)**

Rosemary McCauley. She is an inspiration! #lscsm

 @OncLive's 3/22 #ProstateCancer State of the Science Summit will feature educational sessions & dinner Register now

 Gary is #cancer free, living his dream of owning a bakery. Our .@CTFRide keeps him linked to the cancer community

 Annual benefit of curing 1% more cancers is est at \$500B. #Immunotherapy may need its own value model .@ClinOncNews

## **Closer to Free**

# **closer to free**

The fund to advance cancer research and enhance patient care

## **Upcoming Events**

**February 15; 12PM**

### **YCC Cancer Immunology Research Program**

SHM I-304

*Clinical Trials in Immunocellular Therapy of Cancer: Bridging the Translational Gap*

Alexey Bersenev, MD, PhD

[Learn More >>](#)

**February 19; 7:30PM**

### **Yale Cancer Answers**

WNPR 90.5

*Global Oncology*

Edward Trimble, MD, MPH

[Learn More >>](#)

**February 20; 2PM**

### **Yale Cancer Biology Institute Research Seminar**

Hope 216

This FOA supports the development of new exploratory research in cancer diagnosis, treatment, imaging, symptom/toxicity, and prevention clinical trials.

**Application Receipt/Submission Date:** March 22, 2017

[Learn More >>](#)

### **National Compassionate Caregiver of the Year Award**

The National Compassionate Caregiver of the Year (NCCY) Award is a national recognition program that elevates excellence in compassionate healthcare.

**Deadline for Nominations:** March 31, 2017

[Learn More >>](#)

## **Recent Publications**

### **Extracellular matrix receptor expression in subtypes of lung adenocarcinoma potentiates outgrowth of micrometastases.**

Stevens LE, Cheung WK, Adua SJ, Arnal-Estapé A, Zhao M, Liu Z, Brewer K, Herbst RS, Nguyen DX.

Cancer Res. 2017 Feb 14.

[Read More >>](#)

### **Objective, domain-specific HER2 measurement in uterine and ovarian serous carcinomas and its clinical significance.**

Carvajal-Hausdorf DE, Schalper KA, Bai Y, Black J, Santin AD, Rimm DL.

Gynecol Oncol. 2017 Feb 11.

[Read More >>](#)

### **Integrated genomic analyses of de novo pathways underlying atypical meningiomas.**

Harmancı AS, Youngblood MW, Clark VE, Coskun S, Henegariu O, Duran D, Erson-Omay EZ, Kaulen LD, Lee TI, Abraham BJ, Simon M, Kriscsek B, Timmer M, Goldbrunner R, Omay SB, Baranoski J, Baran B, Carrión-Grant G, Bai H, Mishra-Gorur K, Schramm J, Moliterno J, Vortmeyer AO, Bilgüvar K, Yasuno K, Young RA, Günel M.

Nat Commun. 2017 Feb 14;8:14433.

### *Chromatin Dysregulation as Driver of Oncogenesis*

Chao Lu, PhD

[Learn More >>](#)

### **February 21; 9:30AM**

#### **Pathology Research in Progress Talk**

TAC N-107

*Identification of Epigenetic Regulators of Resistance to HER2-targeted Antibodies in Breast Cancer*

Molly Gale

*A Mitochondrial ROS Induced Hormetic Response in Mice*

Carly Cox

[Learn More >>](#)

### **February 21; 12PM**

#### **YCC Grand Rounds**

Park Street Auditorium

Town Hall Presentation

Charlie Fuchs, MD, MPH

[Learn More >>](#)

### **February 21; 4PM**

#### **Human and Translational Immunology Seminar**

TAC N-203

*Protein modifications in autoimmunity and cancer*

Mark Mamula, PhD

[Learn More >>](#)

### **February 22; 12PM**

#### **Yale Dermatology Seminar**

TAC N-203

*A Melanoma Lymph Node Metastasis with a Donor-Patient Hybrid Genome Following Bone Marrow Transplantation: A Second Case of Leucocyte-Tumor Cell Hybridization in Cancer Metastasis*

John M. Pawelek, PhD

[Learn More >>](#)

### **February 23; 9AM**

#### **Therapeutic Radiology Grand Rounds**

Smilow LL505

*What's New in Radiotherapy for Pediatric Sarcomas*



[Read More >>](#)

**Lenalidomide use in myelodysplastic syndromes: Insights into the biologic mechanisms and clinical applications.**

Stahl M, Zeidan AM.

Cancer. 2017 Feb 13.

[Read More >>](#)

**The Sodium/Iodide Symporter (NIS): Molecular Physiology and Preclinical and Clinical Applications.**

Ravera S, Reyna-Neyra A, Ferrandino G, Amzel LM, Carrasco N.

Annu Rev Physiol. 2017 Feb 10;79:261-289.

[Read More >>](#)

**Immune Regulation of Antibody Access to Neuronal Tissues.**

Iwasaki A.

Trends Mol Med. 2017 Feb 6.

[Read More >>](#)

**Outcome of patients treated for myelodysplastic syndromes without deletion 5q after failure of lenalidomide therapy.**

Prebet T, Toma A, Cluzeau T, Sekeres MA, Vey N, Park S, Al Ali N, Sugrue MM, Komrokji R, Fenaux P, Gore SD.

Oncotarget. 2017 Feb 8.

[Read More >>](#)

**Achieving Clarity About Lung Cancer and Opacities.**

**Detterbeck FC.**

Chest. 2017 Feb;151(2):252-254.

[Read More >>](#)

**Contemporary Gleason Grading of Prostatic Carcinoma: An Update With Discussion on Practical Issues to Implement the 2014 International Society of Urological Pathology (ISUP) Consensus Conference on Gleason Grading of Prostatic Carcinoma.**

Epstein JI, Amin MB, Reuter VE, Humphrey PA.

Suzanne L. Wolden, MD, FACR

[Learn More >>](#)

**February 23; 12:30PM**

**Pathology Grand Rounds**

LMP 1094

*Epigenetic Changes and Somatic Retrotransposition in Cellular Senescence and Aging*

John M. Sedivy, PhD

[Learn More >>](#)

**February 23; 2:30PM**

**Smilow Cancer Genetics and Prevention Program Seminar**

SRC, Suites 107-109

[Learn More >>](#)

**February 23; 4PM**

**Microbial Pathogenesis Special Seminar**

Hope 216

*Jumping Genes and Jumping Cancers*

Michael J. Metzger, PhD

[Learn More >>](#)

**February 24; 6:30PM**

**Smilow Cancer Genetics and Prevention Program/The Get in Touch Foundation Event**

SRC, McGivney Conference Room

*A mother and daughter Event Focusing on Breast Health and Awareness*

Besty Nilan

[Learn More >>](#)

**February 26; 7:30PM**

**Yale Cancer Answers**

WNPR 90.5

Using Biomarkers to Test for Lung Cancer

David Rimm, MD, PhD

[Learn More >>](#)

**February 27; 11AM**

**YCC Radiobiology and Radiotherapy Research Program**

SHM I-304

*Regulation of Cancer Stem Cells by Hypoxic Tumor Microenvironment*

Am J Surg Pathol. 2017 Feb 7.

[Read More >>](#)

**Pathway level alterations rather than mutations in single genes predict response to HER2-targeted therapies in the neo-ALTTO trial.**

Shi W, Jiang T, Nuciforo P, Hatzis C, Holmes E, Harbeck N, Sotiriou C, Peña L, Loi S, Rosa DD, Chia S, Wardley A, Ueno T, Rossari J, Eidtmann H, Armour A, Piccart-Gebhart M, Rimm DL, Baselga J, Puztai L.

Ann Oncol. 2017 Jan 1;28(1):128-135.

[Read More >>](#)

Hoon Kim, PhD

[Learn More >>](#)

**February 27; 2PM**

**Yale Cancer Biology Institute Research Seminar**

Hope 216

*Roles of the Extracellular Matrix in Metastasis and Drug Resistance*

Madeleine Oudin, PhD

[Learn More >>](#)

**February 28; 9:30AM**

**Pathology Research in Progress Talks**

TAC N-107

TBA

Kelly Stanton, PhD and Te Liu, PhD

[Learn More >>](#)

**February 28; 12PM**

**YCC Grand Rounds**

Park Street Auditorium

*Challenges in Interpreting the Genome*

Lajos Puztai, MD, DPhil

TBA

Aaron Ring, MD, PhD

[Learn More >>](#)

**February 28; 1PM**

**Cell Biology Seminar**

SHM C-428

*Exploiting viruses to understand and treat cancer*

Clodagh O'Shea, PhD

[Learn More >>](#)

**March 2; 12:30PM**

**Pathology Grand Rounds**

LMP 1094

*Novel Mechanisms Regulating Vascular Homeostasis*

Christopher D. Kontos, MD

[Learn More >>](#)

**March 2; 2:30PM**

**Smilow Cancer Genetics and Prevention Program Seminar**

SRC, Suites 107-109

[Learn More >>](#)

**March 2; 5PM**

**Yale Cancer Center and Smilow Cancer  
Hospital Lung Cancer Event**

Park Street Auditorium

*The Promise of Personalized Medicine for  
Lung Cancer*

[Learn More >>](#)

**March 3; 12PM**

**YCC Research in Progress Seminar**

NP4-101B

TBA

Ranjit Bindra, MD, PhD

[Learn More >>](#)



**Submissions**

Please submit your recent  
publication and grant  
announcements to:

**Renee Gaudette**

Director, Public Affairs and Marketing

[renee.gaudette@yale.edu](mailto:renee.gaudette@yale.edu)

