

DirectConnect

Inside Yale Cancer Center

June 26, 2020

Announcements



**Dr. Alfred Lee
Awarded David J.
Leffell Prize for
Clinical Excellence**
Congratulations to
Alfred I. Lee, MD,
PhD, winner of The
David J. Leffell
Prize for Clinical
Excellence. This
annual award was
established by

David J. Leffell, MD, and Cindy Leffell in 2008 to recognize the Yale Medicine faculty member who best exemplifies clinical expertise, a commitment to teaching, and the highest standards of care and compassion for patients. Since arriving at Yale, Dr. Lee has been known as a "go-to" hematologist throughout the Yale system, maintaining a very busy clinical practice and a deep commitment to his educational role. Dr. Lee's passion for education and excellence in teaching have been continually recognized through numerous awards and recognitions. [Learn More >>](#)

Three Smilow Physicians Honored by Yale Medicine

The Yale Medicine Distinguished Clinical Career Award was created this year to

from the desk of
Charles S. Fuchs, MD, MPH
Director, Yale Cancer Center
and Physician-in-Chief
Smilow Cancer Hospital



Yale
NewHaven
Health
Smilow Cancer
Hospital

Yale **CANCER
CENTER**
A Comprehensive Cancer Center Designated
by the National Cancer Institute

[News Center](#)

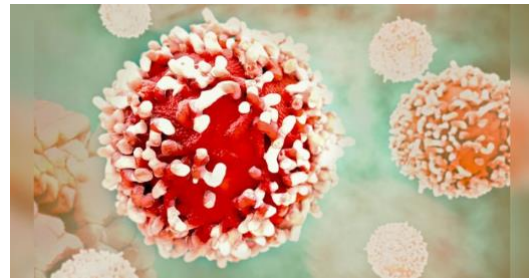
recognize and honor the careers of physicians marked by significant accomplishments, exemplary dedication, and important contributions in advancing Yale Medicine, the overall medical profession, and the community. Of the five inaugural recipients, three are celebrated and accomplished physicians from Yale Cancer Center/Smilow Cancer Hospital.

Congratulations to **Jean L. Bolognia, MD**, Professor of Dermatology and Vice Chair for Clinical Affairs, Department of Dermatology; **Peter E. Schwartz, MD**, John Slade Ely Professor of Obstetrics, Gynecology, & Reproductive Sciences and Vice Chair for Gynecology in the Department of Obstetrics, Gynecology & Reproductive Sciences; and **Karl L. Insogna, MD**, Ensign Professor of Medicine (Endocrinology) and Director of the Yale Bone Center.

[Learn More >>](#)

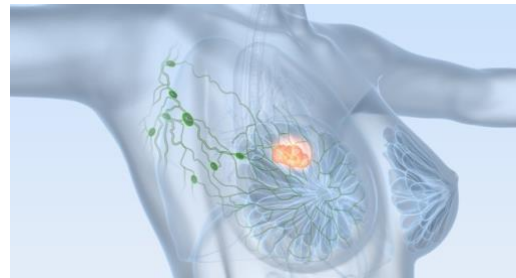


Jean L. Bolognia, MD, Peter E. Schwartz, MD, Karl L. Insogna, MD



Blocking a 'Jamming Signal' Can Unleash Immune System to Fight Tumors

[Read More >>](#)



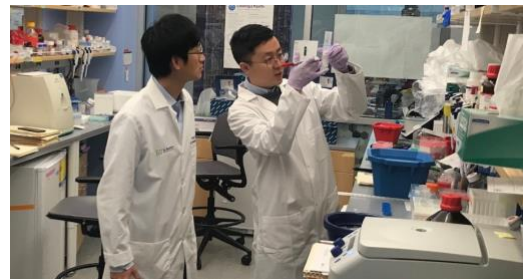
Yale Cancer Center Tumor Study Shows Triple-Negative Breast Cancer has Different Biology in African Americans

[Read More >>](#)



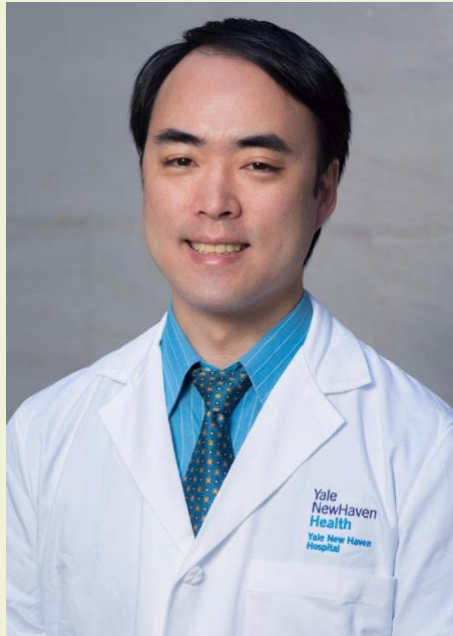
27,000 Masks Handed Out In The Hill Neighborhood

[Read More >>](#)



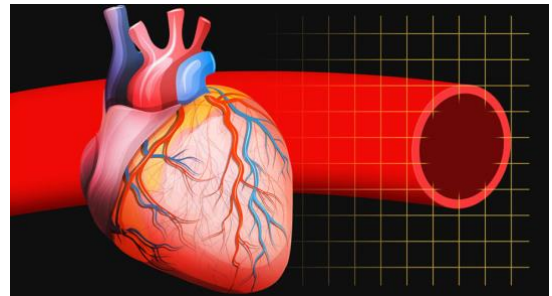
Yale Cancer Center Study Shows Development of a New Class of Immune Gene Therapy for Cancer Treatment

[Read More >>](#)



Peter Kim, MD, Appointed to Neuro-Oncology
 We are pleased to announce that Dr. Peter Kim will join the Smilow Cancer Hospital Brain Tumor Center on July 1 as an Assistant Professor of

Neurology (Neuro-Oncology), having completed his fellowship in Neuro-Oncology at Yale. Dr. Kim received his medical degree from Drexel University College of Medicine and completed his residency at Yale New Haven Hospital. He earned his MA in Physiology from Georgetown University.



Will Chemo Cause Heart Failure? A New Test May Have Answers

[Read More >>](#)

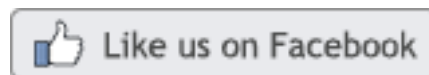


Repurposed Drug Shows Promise for Treating COVID-19 Inflammation

[Read More >>](#)



Join Smilow Cancer Hospital on Facebook



Latest Posts:

Smilow Cancer Hospital's Screening and Prevention Program connected with New Haven's Hill North Community Management Team, Mask for CT, the Jewish Federation, and Yale University to distribute over 21,000 face masks in the New Haven's Hill neighborhood over the weekend. Thank you for coming together for our local community!

Margaret Gilshannon Named Interim



Director of Finance and Administration

Please welcome Margaret Gilshannon, MHA, as Interim Director of Finance and Administration for Yale Cancer Center. Margaret joins the Cancer Center while continuing her role with the Department of Pathology, where her leadership skills, strategic planning experience, and effective projection for both faculty and staff have yielded strong results for the Department over the last four years. Prior to her work with Pathology, Margaret also served in similar roles for the Departments of Orthopedics and Rehabilitation and Emergency Medicine at Yale School of Medicine. Before joining Yale, Margaret spent 14 years in administrator and clinical leadership roles at the University of Washington School of Medicine in Seattle.

Secure and Private Zoom Meetings

In response to security and privacy concerns with the Zoom application, Yale and YNHHS IT have taken action to automatically secure sessions. Take advantage of the recommended



[Read More >>](#)

Today our #SmilowStar is Susan Hanrahan, BSN, RN, OCN, CHPN, Oncology Nurse Coordinator, from the Smilow Cancer Hospital Care Center in Derby. Sue was instrumental in the successful coordination and merger of our Orange Care Center with the Derby Care Center. She coordinated the two groups of staff, and the scheduling in the treatment room, while maintaining staffing, social distancing, and continually working within physicians' scheduling changes. In addition, Sue has helped to guarantee that supplies for both the Derby and Orange teams were more than generous and support for the combined Care Centers was never lacking. Thank you, Sue!

Smilow Stars

Thank you,
Susan Hanrahan,
RN, OCN, CHPN
Oncology Nurse
Coordinator, at Sm
Cancer Hospital C
Center in Derby

YaleNewHavenHealth
Smilow Cancer Hospital

Yale
CANCER
CENTER
A Comprehensive Cancer Center Designated
by the National Cancer Institute

[Read More >>](#)

actions and Zoom features in order to fully ensure your Zoom meeting is secure and private.

[Learn More through Yale >>](#)

[Learn More through YNHHS >>](#)

Notables

Kathryn Miller-Jensen, PhD, Associate Professor of Biomedical Engineering and Molecular, Cellular, and Developmental Biology, along with **Marcus Bosenberg, MD, PhD**, Interim Director of the Yale Center for Immuno-Oncology (YCIO) and Professor of Dermatology, Pathology, and Immunobiology, were awarded a \$2.8 million **Cancer Systems Immunology Grant** from the National Cancer Institute to evaluate and model cytokine signaling related to immunotherapy for cancer. In addition to research funding, the award will establish Miller-Jensen and Bosenberg as members of the **Cancer Systems Biology Consortium (CSBC)**, a science network founded by the National Cancer Institute (NCI) devoted to enhancing the role of systems biology approaches to cancer research.
[Learn More >>](#)

At this year's graduation, **The David S. Fischer, MD Annual Award for Outstanding Teaching and Mentoring of Fellows in Medical Oncology** was presented to **Sarah Goldberg, MD**, and to **Jill Lacy, MD**. **The David S. Fischer, MD Annual Award for Outstanding Teaching and Mentoring of Fellows in Hematology** was presented to **Natalia Neparidze, MD**. **Ranjan Pathak, MBBS, MHS**, and **Alexander Pine, MD, PhD**, received the **Fellows' Research Awards in Medical Oncology and Hematology**, respectively.

ASCO will recognize **Anne C. Chiang, MD, PhD, FASCO**, Associate Professor of Medicine (Medical Oncology) and Chief Network Officer,

Smilow Cancer Hospital and Yale New Haven Children's Hospital have once again been recognized as one of the top centers in the nation for pediatric cancer treatment and care in the U.S. News and World Report 2020-21 Best Children's Hospitals rankings.



[Read More >>](#)

Please join us on July 2 at 10am for the start of a six-week, virtual art therapy program: Collage Book Club! Through art therapy, participants in this group will learn how to create a beautiful book for emotional and artistic expression.



Starting July 2, join us for a 6-week, virtual workshop, every Thursday from 10-11am!

To register, email: elizabeth.ferguson@yale.edu

YaleNewHavenHealth
Smilow Cancer Hospital

Yale CANCER CENTER
A Division of Yale University School of Medicine

[Read More >>](#)

with the **Joseph V. Simone Award and Lecture for Excellence in Quality and Safety in the Care of Patients With Cancer**. Dr. Chiang will be presented with the award at the 2020 Virtual ASCO Quality Care Symposium, taking place October 9-10.

Jeremy Kortmansky, MD, Associate Clinical Professor of Medicine (Medical Oncology), Deputy Chief Network Officer, Care Centers, has been appointed to serve as a member of **ASCO's Gastrointestinal Cancer Guideline Advisory Group (GAG)**. The four-year term began on June 3, 2020. GAGs make recommendations to the Clinical Practice Guidelines Committee (CPGC) on identifying and prioritizing topics for guideline development.

The **National Palliative Care Research Center** has awarded **Prasanna Ananth, MD**, Assistant Professor of Pediatrics (Hematology/Oncology) with a two-year **Kornfeld Scholar Grant** to establish benchmarks for high-quality end-of-life care for pediatric cancer patients.

Xavier Llor, MD, PhD, Professor of Medicine (Digestive Diseases) and Medical Director, Cancer Screening and Prevention Program, has been awarded an **R01 Grant** from the **National Cancer Institute** to study early onset colorectal cancer.

Grace Kong, PhD, Assistant Professor of Psychiatry, has received an **R01 Grant** from the **National Institute on Drug Abuse (NIDA)** and U.S. Food and Drug Administration Center for Tobacco Products to examine youth-accessible information on YouTube regarding how e-cigarettes are modified and "hacked."

Darryl Martin, PhD, Research Scientist in the Department of Urology and member of Yale Cancer Center's Cancer Signaling Networks

Our Hematology-Medical Oncology Fellowship Program graduated nine fellows in an online graduation on Friday, and celebrated again through a socially distanced event in the parking lot of our Smilow Cancer Hospital Care Center in North Haven on Saturday morning. Congratulations to these stellar physicians, and good luck to each of them on the next step in their careers!



[Read More >>](#)

Maura Harrigan discusses what cancer survivorship means to her, and how it has impacted how she cares for patients. View our full archive of videos in celebration of Cancer Survivorship



[Read More >>](#)

Get to know Dr. Kelsey Martin, Assistant Professor of Clinical Medicine (Hematology) at our Smilow Cancer Hospital Care Center in Orange, and hear why she chose to pursue cancer care, in this recent interview.

Research Program, has been awarded an **Idea Development Award** from the **Department of Defense**. In this interdisciplinary collaborative project, Dr. Martin will serve as the PI and work with Co-PIs, James Yu, MD, MHS, Preston Sprenkle, MD, Peter Humphrey, MD, PhD, and John Onofrey, PhD, to use therapeutic response genomic signatures and machine learning to predict treatment intervention. **Dr. Martin** has also been awarded a **Career Development Award** from the **Department of Defense Peer Reviewed Cancer Research Program**. Dr. Martin's research aims to understand the impact of the tumor immune microenvironment on bladder cancer progression. This 3-year award will begin on July 1, 2020. Dr. Alfred Bothwell, PhD, Professor, Department of Immunobiology will serve as mentor on this award.

Employee Profile: Susanne Lee-Baldassini

Get to Know *A Caregiver*



Kelsey Martin, MD
Assistant Professor, Clinical Medicine (Hematology)

YaleNewHavenHealth
Smilow Cancer Hospital

Yale CANCER CENTER
A Comprehensive Cancer Center Designated by the National Cancer Institute

[Read More >>](#)

Congratulations to Roy S. Herbst, MD, PhD, Chief of Medical Oncology, on his appointment to the American Association for Cancer Research (AACR) Board of Directors for a three-year term for his outstanding contributions to lung cancer research and treatment.



Dr. Roy Herbst

Appointed to the AACR Board of Directors

[Read More >>](#)

Tristen Park, MD, Assistant Professor of Surgery (Oncology), will share the latest information on surgical options for breast cancer on Yale Cancer Answers. Tune in to hear her interview live, or download our podcast



Susanne Lee-Baldassini, LCSW, has been a clinical social worker for 28 years, and recently celebrated 14 years with Yale New Haven Health. She currently supports patients and families at the Smilow Cancer Hospital Care Center in Guilford.

Throughout her social work career, Susanne's goal has always been to be focused and present for both the patient and their families. "I really enjoy the challenges and rewards of working at a Care Center where every day is an opportunity to make a difference. I feel passionate about my work and helping those facing various challenges on their often difficult journey," said Susanne.

Susanne is currently working on an initiative to bring her focus of Meaning-Centered Psychotherapy to COVID-19 survivors. Meaning-Centered Psychotherapy is an evidence-based intervention that helps people connect to meaning in their lives amidst the grief and loss they have


through iTunes





[Read More >>](#)

Follow Yale Cancer Center on Twitter

Follow us on [twitter](#)

 Congratulations @DrRoyHerbstYale on receiving the @AACR Distinguished Public Service Award for his outstanding leadership in #cancer science policy.

 Today in @nresearchnews @tz4st @Aaronmring reveal a "jamming signal" that blocks IL-18 from reaching tumors to fight #cancer and share a newly created IL-18 version that cannot be jammed and significantly reduced tumors.

 Log in to virtual #AACR20 today at 2:15pm!
@DrRoyHerbstYale leads a presentation highlighting combination strategies with IO Agents.

experienced as of late. She is hoping to reach those in need of extra support to process the experience of the illness.

"The hope is that group members will use teaching, group discussion, and experiential exercises to focus on themes of meaning while being a COVID-19 survivor," said Susanne. "My biggest challenge currently is adjusting to working remotely. I really enjoy spending time with patients, families, and my teams!"

Before her recent retirement, Bonnie Indeck, LCSW, commented, "Susanne has provided social work services to a number of areas during her tenure here. Her clinical skills are sharp and her patients and families benefit from her expertise. I look forward to her continued great work and innovative projects. Susanne has been exemplary in working remotely and continuing to provide the best of care during the COVID-19 crisis."

Recent Publications

Escobar-Hoyos, L. F., Penson, A., Kannan, R., Cho, H., Pan, C. H., Singh, R. K., Apken, L. H., Hobbs, G. A., Luo, R., Lecomte, N., Babu, S., Pan, F. C., Alonso-Curbelo, D., Morris, J. P., 4th, Askan, G., Grbovic-Huezo, O., Ogradowski, P., Bermeo, J., Saglimbeni, J., Cruz, C. D., ... Leach, S. D.


Altered RNA Splicing by Mutant p53 Activates Oncogenic RAS Signaling in Pancreatic Cancer.


Cancer cell, S1535-6108(20)30260-9.


Advance online publication.


[Read More >>](#)

Zeidan, A. M., Boddu, P. C., Patnaik, M. M., Bewersdorf, J. P., Stahl, M., Rampal, R. K., Shallis, R., Steensma, D. P., Savona, M. R., Sekeres, M. A., Roboz, G. J., DeAngelo, D. J., Schuh, A. C., Padron, E., Zeidner, J. F., Walter, R. B., Onida, F., Fathi, A., DeZern, A., Hobbs, G., ... Mascarenhas, J.


 Scheduled for 9:50am at #AACR20 @tz4st will present research w/@aaronmring showing IL-18 #immunotherapy is effective against checkpoint-immunotherapy refractory tumors by promoting the increase of NK cells.


 Thank you to Dr. Chen Liu . @yalepathology for presenting at our virtual Grand Rounds today on #Immunotherapy for Hepatocellular Carcinoma


 New research in a poster presentation at #ACCR20 led by Wan Ying Tan and . @vasilisyle shows the role of aldehyde dehydrogenase 1B1 in #coloncancer in a newly developed mouse model.

 "The increase in #colorectalcancer in young people is puzzling. It's imperative to find development pathways so we can screen and treat for this disease" - Dr. Xavier Llor.

 Log on to virtual #AACR20 today at 1:15pm for @politikaterina's insight on incorporating translational research into #clinicaltrials of targeted agents.

 Dr. Irvin Modlin is senior author on a study scheduled to be presented this morning at 10:05am at #AACR20 showing a multi-gene #prostatecancer liquid biopsy with 92% better accuracy than #PSA

 Elena Bonazzoli and Dr. Alessandro Santin show in a poster presentation at #AACR20 potential for a new therapeutic option for #cervicalcancer using the novel BET bromodomain inhibitor GS-626510.

 Eunice Cho led research with Hua Lou and Dr. Benjamin Turk in a poster presentation at #AACR20 showing PPP6C regulation of ERK signaling in #melanoma.

Special considerations in the management of adult patients with acute leukaemias and myeloid neoplasms in the COVID-19 era: recommendations from a panel of international experts.

The Lancet. Haematology, S2352-3026(20)30205-2. Advance online publication.

[Read More >>](#)

Goldmacher, G. V., Khilnani, A. D., Andtbacka, R., Luke, J. J., Hodi, F. S., Marabelle, A., Harrington, K., Perrone, A., Tse, A., Madoff, D. C., & Schwartz, L. H.

Response Criteria for Intratumoral Immunotherapy in Solid Tumors: itRECIST.

Journal of clinical oncology : official journal of the American Society of Clinical Oncology, JCO1902985. Advance online publication.

[Read More >>](#)

Cai, Y., Rattray, N., Zhang, Q., Mironova, V., Santos-Neto, A., Muca, E., Vollmar, A., Hsu, K. S., Rattray, Z., Cross, J. R., Zhang, Y., Paty, P. B., Khan, S. A., & Johnson, C. H.

Tumor Tissue-Specific Biomarkers of Colorectal Cancer by Anatomic Location and Stage.

Metabolites, 10(6), E257.

[Read More >>](#)

Zhou, T., Damsky, W., Weizman, O. E., McGeary, M. K., Hartmann, K. P., Rosen, C. E., Fischer, S., Jackson, R., Flavell, R. A., Wang, J., Sanmamed, M. F., Bosenberg, M. W., & Ring, A. M.

IL-18BP is a secreted immune checkpoint and barrier to IL-18 immunotherapy.

Nature, 10.1038/s41586-020-2422-6. Advance online publication.

[Read More >>](#)

Lee, V., Jairam, V., Yu, J. B., & Park, H. S.
Nationwide patterns of hemorrhagic stroke among patients hospitalized with brain



Ismail Osagie led a poster presentation with .@Zhigui_Li and @GloriaHuangMD today at #AACR20 showing the combination of letrozole plus abemaciclib is synergistic & suppresses tumor growth in #ovariancancer& #endometrialcancer.



In a poster presentation at #AACR20, Jennifer Garbarino led research with .@RanjitBindra & Dr. Ryan Jensen showing Alpha Thalassemia/Mental Retardation Syndrome X-Linked mutation as a potential therapeutic target in #gliomas



Please check out our lab's AACR poster on a new antibody:antigen discovery platform focused on extracellular proteins. We found that patients treated with checkpoint inhibitors made novel functional autoantibodies to secreted proteins and surface receptors



.@BarbaraBurtness reports in a poster presentation at #AACR20 on efficacy of pembrolizumab by PD-L1 expressed recurrent metastatic squamous cell #headandneckcancer



Just published in .@TheLancetHeam, @Amer_Zeidan published new guidelines for treating patients with acute #leukemia and #myeloid neoplasms during #COVID19 in collaboration with a panel of 50 international experts.



New today at virtual #AACR20! .@SidiChen presents research showing development of a new class of immune gene therapy for #cancer treatment.



Dr. Yuhong Lu presents results tomorrow w/ .@PeterGlazer showing hypoxia induces #EGFR inhibitor resistance in #lungcancer cells by upregulation of fibroblast growth factor receptor 1 via MAPK pathway in a poster at #AACR20

metastases: influence of primary cancer diagnosis and anticoagulation.

Scientific reports, 10(1), 10084.

[Read More >>](#)

Kim, D. J., Venkataraman, A., Jain, P. C., Wiesler, E. P., DeBlasio, M., Klein, J., Tu, S. S., Lee, S., Medzhitov, R., & Iwasaki, A.

Vitamin B12 and folic acid alleviate symptoms of nutritional deficiency by antagonizing aryl hydrocarbon receptor.

Proceedings of the National Academy of Sciences of the United States of America, 202006949. Advance online publication.

[Read More >>](#)

Alvero, A. B., Hanlon, D., Pitruzzello, M., Filler, R., Robinson, E., Sobolev, O., Tedja, R., Ventura, A., Bosenberg, M., Han, P., Edelson, R. L., & Mor, G.

Transimmunization restores immune surveillance and prevents recurrence in a syngeneic mouse model of ovarian cancer.

Oncoimmunology, 9(1), 1758869.

[Read More >>](#)

Yoon, E., Wilson, P., Zuo, T., Pinto, M., Cole, K., & Harigopal, M.

High Frequency of Triple Negative Breast Cancers Co-express p16 and SOX10 But Do Not Express AR.

Human pathology, S0046-8177(20)30119-2. Advance online publication.

[Read More >>](#)

Xu, X., Persing, S. M., Allam, O., Park, K. E., Mozaffari, M. A., Lannin, D. R., Bossuyt, V., & Alperovich, M.

Management of recurrent bilateral multifocal pseudoangiomatous stromal hyperplasia (PASH).

The breast journal, 10.1111/tbj.13950. Advance online publication.

[Read More >>](#)



Coming up in a poster presentation at #AACR20 tomorrow, Dr. Patricia LoRusso shares results from a phase 1b study of xentuzumab and abemaciclib to treat #NSCLS



@Zhigui_Li and @GloriaHuangMD present a poster presentation tomorrow at #AACR20 showing the combination of letrozole plus abemaciclib is synergistic and suppresses tumor growth in #ovariancancer and #endometrialcancer



So grateful for all of the @YaleCancer fellows and APPs who were mobilized to our @SmilowCancer inpatient services during the #COVID19 pandemic. It has been a large team effort, and we are so thankful for your dedication!



Promising new #pancreaticcancerresearch! A study @cellpressnews led by Dr. Luisa Escobar-Hoyos uncovers a link between certain mutations & the mechanism that regulates cell activity that could help develop new treatments.



Let's do it again! We're getting ready for #AACR20 Virtual Meeting II .@YaleCancer @SmilowCancer scientists are presenting the latest developments in #cancer research including #lungcancer#headandneckcancer and #immunotherapy



Congratulations to .@PJAnanthMD ! Dr. Ananth received a 2020 National #PalliativeCare Research Center grant to help establish high quality end-of-life care in children with #pediatriccancer



.@EllenFoxman discusses her work investigating immune responses to respiratory viruses, including #Covid19 during a recent @YaleCancer Grand Rounds



Dr. Lajos Pusztai shares information on #translational research for #breastcancer and how to predict which patients will respond to

Daley, J. M., Tomimatsu, N., Hooks, G., Wang, W., Miller, A. S., Xue, X., Nguyen, K. A., Kaur, H., Williamson, E., Mukherjee, B., Hromas, R., Burma, S., & Sung, P.

Specificity of end resection pathways for double-strand break regions containing ribonucleotides and base lesions.

Nature communications, 11(1), 3088.

[Read More >>](#)

Youngblood, M. W., & Günel, M.

Molecular genetics of meningiomas.

Handbook of clinical neurology, 169, 101-119.

[Read More >>](#)

Khadraoui, W., Tymon-Rosario, J., Nagarkatti, N., & Menderes, G.

Robotic Low Anterior Resection and Partial Bladder Resection for Management of Locoregional Endometrial Cancer Recurrence.

Journal of minimally invasive gynecology, S1553-4650(20)30296-X. Advance online publication.

[Read More >>](#)

Funding Opportunities

Fund to Retain Clinical Scientists at the Yale School of Medicine (FRCS)

We are announcing a request for applications for support from the Fund to Retain Clinical Scientists at the Yale School of Medicine (FRCS), made possible by a grant from the Doris Duke Charitable Foundation. The FRCS program provides supplemental research support to early-career physician-scientists who face significant caregiving demands.

Application Deadline: July 13, 2020

[Learn More >>](#)

FY20 Ovarian Cancer Research Program Proteogenomics Research Award

therapy in a recent grand rounds



Congrats .@Annechiangmd honored w/the prestigious @ASCO 2020 Joseph V. Simone Award! "Anne's commitment to quality cancer care has contributed to the creation of quality-focused initiatives enhancing how care is delivered."



Dr. Tristen Park .@YaleSurgery will share the latest information on surgical options for #breastcancer on Yale Cancer Answers today at 7:30pm on @wnpr



@YaleCancer autoimmune disease expert Dr. Eric Meffre talked to @Jocelymaminta @WTNH about antibody research he's leading to help treat patients severely affected w/ #COVID19 & diminish the length & severity of their disease.

Calendar

Building Against Burnout: Tools, Shortcuts, & Pearls for Physicians & APPs

June 26; 12:15 PM

[Learn More >>](#)

Phone Meditation hosted by Smilow

Integrative Medicine

June 26; 1:00 PM

[Learn More >>](#)

Yale Cancer Answers

June 28; 7:30 PM

NPR

Deep Learning and Cancer Outcomes

Sanjay Aneja, MD

[Learn More >>](#)

Yale Summer Workshop in Clinical Trials

June 29-June 30; 8:30 AM

[Learn More >>](#)

Guided Imagery Meditation with Michele Grand LMT hosted by Smilow Integrative Medicine

June 29; 10:30 AM

[Learn More >>](#)

This Research Award supports the use of proteomics and/or genomics to explore new concepts or theories in ovarian cancer. The award is intended to support the genomic and/or transcriptomic and/or proteomic analysis of currently available clinical specimens with a focus on answering biologic and pathophysiologic questions of clinical relevance in ovarian cancer.

Letter of Intent Due: July 16, 2020

[Learn More >>](#)

DeLuca Pilot Award Grants

Five pilot awards will be awarded to support investigators participating in Hematology research for the purpose of establishing research collaborations between scientists/researchers at Yale and primary Hematology faculty and to generate preliminary data and evidence of collaboration for new NCI/NIH grant applications. The research should seek to advance our knowledge in hematologic disorders and to improve patient care, therapies, and outcomes.

Application Deadline: July 20, 2020

[Learn More >>](#)

Serological Sciences Network (SeroNet) RFAs

- Research Projects in SARS-CoV-2 Serological Sciences (U01)
- SARS-CoV-2 Serological Sciences Centers of Excellence (U54)

Funding for these RFAs was provided through Congressional appropriation enacted in response to the COVID-19 pandemic to NCI "to develop, validate, improve, and implement serological testing and associated technologies." In response, NCI intends to use this emergency appropriation in part to establish a Serological Sciences Network to which these RFAs correspond.

Application Deadlines: July 22, 2020

[Learn More >>](#)

Virtual T'ai Chi/Qigong hosted by Smilow Integrative Medicine

June 15; 3:00 PM

[Learn More >>](#)

Yale Cancer Center Grand Rounds

June 30; 12:00 PM

Town Hall - State of Yale School of Medicine

Dean Nancy J. Brown, MD

[Learn More >>](#)

Virtual Cancer Survivors Day Closing Ceremony

June 30; 12:00 PM

Tara Sanft, MD | Janet Freedman, MD | Scott Capozza, MS, PT | Angela Khairallah, MSW, LCSW | Lynn Carbino, RN | Javin Brita, PA | Heather Studwell, MS, ORT/L, CLT-LANA

[Learn More >>](#)

Phone Meditation hosted by Smilow Integrative Medicine

July 30; 12:30 PM

[Learn More >>](#)

Zumba Gold hosted by Smilow Integrative Medicine

June 30; 1:00 PM

[Learn More >>](#)

Restorative Yoga with Ellen McNally hosted by Smilow Integrative Medicine

June 30; 3:00 PM

[Learn More >>](#)

Yale Cancer Center Presents YCIO Seminar/Chalk Talk

June 30; 4:30 PM

T Cell Differentiation and Fate Choice in Cancer and Autoimmunity

Andrea Schietinger, PhD

[Learn More >>](#)

Virtual T'ai Chi/Qigong hosted by Smilow Integrative Medicine

July 1; 2:00 PM

[Learn More >>](#)

Phone Meditation hosted by Phil Levine, Mindfulness Meditation Coach

July 1; 4:00 PM

[Learn More >>](#)

Virtual Gentle Yoga hosted by Smilow Integrative Medicine

July 2; 10:00 AM

[Learn More >>](#)

Breast Cancer Alliance Young Investigator Grant

To encourage a commitment to breast cancer research, Breast Cancer Alliance invites clinical doctors and research scientists whose primary focus is breast cancer and who are in the early stages of their careers, to apply for funding for the Young Investigator Grant.

Application Deadline: July 24, 2020

[Learn More >>](#)

Strengthening Institutional Capacity to Conduct Global Cancer Research in Low- and Middle-Income Countries (D43)

The purpose of this FOA is to establish an institutional program for mentored training in global cancer research.

Application Deadline: July 24, 2020

[Learn More >>](#)

2020 Yale Cancer Center Internal Pilot Grant Competition

These grants will support all potential areas of innovative cancer research including basic, clinical, computational, population and epidemiology, prevention/control, implementation science and translational cancer research.

Application Deadline: August 1, 2020

[Learn More >>](#)

DoD FY20 Kidney Cancer Research Program

The KCRP focuses on the issues regarding prevention, detection, treatment, and the long-term effects of treatment for kidney cancer for Service Members, Veterans, their families, and the American public.

Early Career Investigator Award - Letter of Intent Due: August 5, 2020

Concept Award - Letter of Intent Due: July 15, 2020

Translational Research Partnership Award - Letter of Intent Due: August 5, 2020

A Collage Book Club: Storytelling Through Art

July 2; 10:00 AM

[Learn More >>](#)

Guided Imagery Meditation with Michele Grand LMT hosted by Smilow Integrative Medicine

July 2; 1:30 PM

[Learn More >>](#)

Cancer Genetics and Prevention Program Seminar

July 2; 2:30 PM

[Learn More >>](#)

Phone Meditation hosted by Smilow Integrative Medicine

July 3; 1:00 PM

[Learn More >>](#)

Virtual T'ai Chi/Qigong hosted by Smilow Integrative Medicine

July 6; 3:00 PM

[Learn More >>](#)

Bereavement Seminar

July 7; 9:30 AM

COVID-19: Coping with the Loss of Your Loved One

[Learn More >>](#)

Phone Meditation hosted by Smilow Integrative Medicine

July 7; 12:30 PM

[Learn More >>](#)

Zumba Gold hosted by Smilow Integrative Medicine

July 7; 1:00 PM

[Learn More >>](#)

Restorative Yoga with Ellen McNally hosted by Smilow Integrative Medicine

July 7; 3:00 PM

[Learn More >>](#)

Virtual T'ai Chi/Qigong hosted by Smilow Integrative Medicine

July 8; 2:00 PM

[Learn More >>](#)

Phone Meditation hosted by Phil Levine, Mindfulness Meditation Coach

July 8; 4:00 PM

[Learn More >>](#)

[Learn More >>](#)

**Emergency Awards: RADx-UP
Coordination and Data Collection Center
(CDCC) (U24)**

This emergency cooperative agreement FOA from the NIH provides an expedited funding mechanism as part of the Rapid Acceleration of Diagnostics-Underserved Populations (RADx-UP) initiative, a consortium of community-engaged research projects to understand factors that have led to disproportionate burden of the pandemic on the underserved and/or vulnerable populations so that interventions can be implemented to decrease these disparities.

Application Deadline: August 7, 2020

[Learn More >>](#)

NIH Support for Conferences and Scientific Meetings (Parent R13)

The purpose of the NIH Research Conference Grant (R13) is to support high quality scientific conferences that are relevant to the NIH's mission and to the public health.

Application Deadline: August 12, 2020

[Learn More >>](#)

NCCN Pfizer Axitinib Request for Proposals (RFP)

NCCN and Pfizer are collaborating to offer a new grant opportunity seeking proposals to support NCCN Member Institution faculty utilizing axitinib. The overall aim is to develop innovative trials that will evaluate the role of axitinib in the treatment of melanoma, hepatocellular carcinoma, and colorectal cancer.

Application Deadline: August 12, 2020

[Learn More >>](#)

Lasker Clinical Research Scholars Program (Si2/R00)

Submissions

Please submit your recent publication and grant announcements to:

Renee Gaudette

Director, Public Affairs and Communications

This FOA encourages applications for the Lasker Clinical Research Scholars Program for the purpose of supporting the research activities during the early stage careers of independent clinical researchers.

Application Deadline: August 28, 2020

[Learn More >>](#)

Community Interventions to Address the Consequences of the COVID-19 Pandemic among Health Disparity and Vulnerable Populations (R01)

This FOA encourages applications to implement and evaluate community interventions testing 1) the impacts of mitigation strategies to prevent COVID-19 transmission in NIH-designated health disparity populations and other vulnerable groups; and 2) already implemented, new, or adapted interventions to address the adverse psychosocial, behavioral, and socioeconomic consequences of the pandemic on the health of these groups.

Application Deadline: August 28, 2020

[Learn More >>](#)