

# Epithelial Cell Polarity Symposium 2018

**March 21<sup>st</sup> 2018, New Haven, CT**

## Poster abstract submission

**March 10<sup>th</sup>, 2018**

[www.ecp-symposium2018.com](http://www.ecp-symposium2018.com)

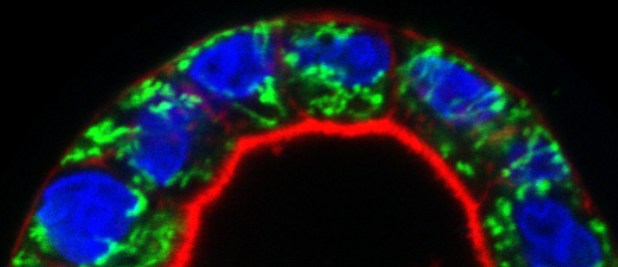
## Registration

**March 15<sup>th</sup>, 2018**

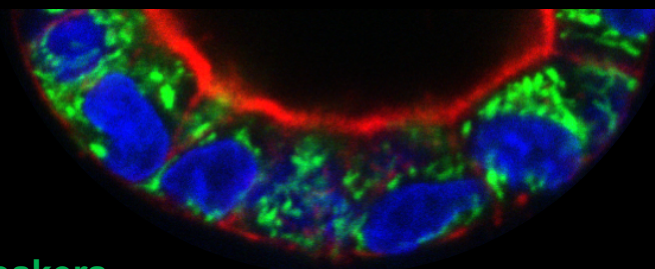
[www.ecp-symposium2018.com](http://www.ecp-symposium2018.com)

## Location

The Anlyan Center  
Yale University, School of Medicine  
300 Cedar Street, New Haven, CT



A local East Coast Symposium on  
Membrane Trafficking, Cell Polarity  
and Cilia.



## Speakers

Susan Mango, Harvard University  
Rebecca Burdine, Princeton University  
Jennifer Lippincott-Schwartz, Janelia Research Campus  
Gregory Pazour, University of Massachusetts  
Tomas Kirchhausen, Harvard University  
Danelle Devenport, Princeton University

## Contact information:

For more information, please visit Epithelial Cell Polarity Symposium 2018 website [www.ecp-symposium2018.com](http://www.ecp-symposium2018.com)

For further inquiries please contact Christina Olesen at [christina.olesen@yale.edu](mailto:christina.olesen@yale.edu)

## Organized by:

Christina W. Olesen, Postdoctoral Fellow, Yale University  
Valeria Padovano, Associate Research Scientist, Yale University  
Andrea Reyna, Associate Research Scientist, Yale University

