



## Yale Pulmonary Critical Care and Sleep Medicine Grand Rounds

**YaleCME**  
CONTINUING MEDICAL EDUCATION

*Presented by*

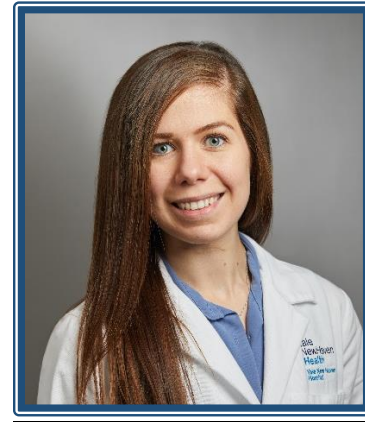
Yale School of Medicine, Department of Internal Medicine, Section of Pulmonary, Critical Care and Sleep Medicine

# Year in Review - Asthma



**Lauren Cohn, MD**

Associate Professor of Medicine, Pulmonary  
Director, Newington VA Pulmonary Clinic  
Co-Director, Yale Center for Asthma and Airway Diseases  
Yale School of Medicine



**Shannon Kay, MD**

Fellow, Pulmonary and Critical Care Medicine  
Yale School of Medicine

**Wednesday, May 12, 2021 @ 3-4 pm EDT**

**REMOTE ATTENDANCE ONLY – NO LOCAL AUDIENCE**

**Moderator: Jose Gomez Villalobos, MD**

Register at: <https://zoom.us/join/join?secret=20210512130000&pwd=1234567890>

Only need to register once for the series

CME credit for live event only.

There is no corporate support for this activity. This course will fulfill the licensure requirement set forth by the State of Connecticut.

### ACCREDITATION

The Yale School of Medicine is accredited by the Accreditation Council for Continuing Medical Education to provide continuing medical education for physicians.

### TARGET AUDIENCE

Attending physicians, house staff/fellows, medical students, nurses, physician assistants.

### NEEDS ASSESSMENT

Asthma clinical care guidelines and management of asthma have advanced in the past few years. This lecture will educate clinicians about updates to asthma care guidelines and recent scientific studies that guide asthma clinical management.

### LEARNING OBJECTIVES

At the conclusion of this talk, individuals will:

1. Updates to management of acute exacerbations of asthma and management of chronic persistent disease.
2. Introduce changes to international asthma guidelines
3. Update and review new therapies for asthma, including biologic drugs for severe asthma

### DESIGNATION STATEMENT

The Yale School of Medicine designates this live activity for 1 AMA PRA Category 1 Credit(s)<sup>TM</sup>. Physicians should only claim the credit commensurate with the extent of their participation in the activity.

### FACULTY DISCLOSURES

Richard Matthay, MD, Course Director – No conflicts of interest  
Lauren Cohn, MD – AstraZeneca, Biohaven  
Shannon Kay, MD – No conflicts of interest

It is the policy of Yale School of Medicine, Continuing Medical Education, to ensure balance, independence, objectivity, and scientific rigor in all its educational programs. All faculty participating as speakers in these programs are required to disclose any relevant financial relationship(s) they (or spouse or partner) have with a commercial interest that benefits the individual in any financial amount that has occurred within the past 12 months; and the opportunity to affect the content of CME about the products or services of the commercial interests. The Center for Continuing Medical Education will ensure that any conflicts of interest are resolved before the educational activity occurs.