

Medical center institutions
 Yale School of Medicine

- School of Public Health
- Yale Medical Group
- Cancer Center
- Child Study Center
- School of Nursing
- Connecticut Mental Health Center
- John B. Pierce Laboratory
- VA Connecticut Healthcare System
- Yale University Health Services
- Yale-New Haven Hospital, Children's Hospital and Psychiatric Hospital
- Yale New Haven Health System

MEDICAL CENTER

An affiliation agreement between the medical school and Grace-New Haven Hospital in 1965 created Yale-New Haven Hospital and the Yale-New Haven Medical Center. Since then, the medical center has grown to include the institutions listed at left. Four miles away in West Haven, the affiliated VA Connecticut Healthcare System maintains active clinical, research and education programs in conjunction with many YSM departments. Extensive maps and directions to medical center destinations are available online at info.med.yale.edu/maps.

- To find a Yale doctor, visit the Yale Medical Group online at yalemedicalgroup.org or phone 1(877)YALEMDS or (203) 785-4851.
- Information for medical school applicants is available from the Office of Admissions at info.med.yale.edu/education/admissions/ or (203) 785-2643.
- For news about the school, visit YSMInfo at ysminfo.yale.edu and the Office of Public Affairs (OPA) at www.yale.edu/opa. Media inquiries should be directed to OPA at (203) 432-1345.
- To find a person at Yale University, consult the online directory at www.yale.edu/phonebook or call directory assistance at (203) 432-4771. To find a person at Yale-New Haven Hospital call (203) 688-4242.

New Haven

Population 130,254
 Distance from:
 NYC 80 miles
 Boston 137 miles

University profile

FACULTY
 Yale Univ. 3,381
 YSM 1,836

STAFF
 Yale Univ. 11,483
 YSM 2,981

STUDENTS
 Yale Univ. 8,185
 YSM 1,176

OPERATING REVENUE
 Yale Univ. \$1.8 billion
 YSM \$790.6 million

Community service
 More than 85 percent of students volunteer in one of close to 100 community service projects including:

- Hill Regional Career High School partnership
- Anatomy Teaching Program
- Hunger and Homelessness Auction
- Wednesday Evening Clinic and HAVEN Student-Run Free Clinic
- 33 School-based clinics

Free care provided to New Haven residents in 2005: \$3.1 million

YALE UNIVERSITY AND NEW HAVEN

The School of Medicine is located less than a mile west of the main campus of Yale University, one of the world's great institutions of higher learning. With a residential college system modeled after Cambridge and Oxford, the undergraduate school is complemented by the Graduate School of Arts and Sciences, the Faculty of Engineering and 10 professional schools including Medicine, Nursing, Law, Management, Divinity and Forestry and Environmental Studies, which offer joint degrees.

Established in 1638, New Haven was the first planned municipality in America, organized geographically in nine squares including a picturesque Green. Today, New Haven is a vibrant coastal city located on Long Island Sound between New York and Boston. New Haven lays claim to the first hamburger and the world's best pizza, as well as the renowned Shubert Theater, where countless Broadway shows proved their mettle before heading to New York. Cultural opportunities abound, from dance, theater and music to the treasures of Yale's art and natural history museums.



Endowment (6/30/05)

Yale Univ. 15.2 billion
 YSM 1.25 billion

2005 capital projects \$ in millions

NEW CONSTRUCTION
 Yale Univ. 87.16
 YSM 9.18

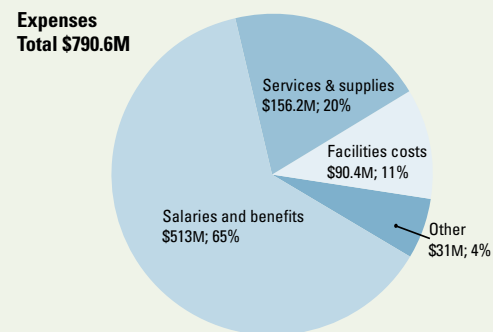
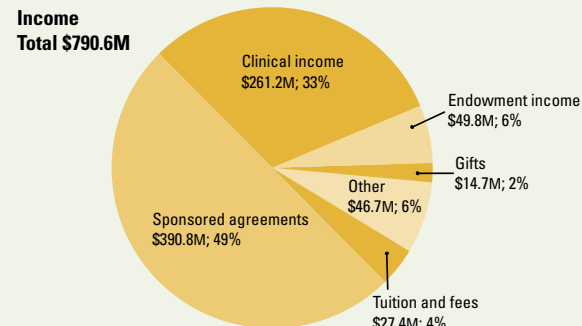
MAINTENANCE & REPAIR
 Yale Univ. 30.15
 YSM 4.26

RENOVATION & ALTERATION
 Yale Univ. 130.37
 YSM 32.05

FINANCES

The School of Medicine had operating income and expenses of \$790.6 million in 2005, a 4.5 percent increase over 2004. The school continues to derive the largest portion of its revenues from sponsored research, improving its ranking from number 8 to number 7 in National Institutes of Health (NIH) awards to medical schools in 2005. Clinical activities sustained the robust performance of the previous year with revenue increasing by 11 percent. Salaries and benefits for faculty, fellows and staff totaled 65 percent of expenditures.

Operating summary for the year ending June 30, 2005



This fact sheet was produced by Yale Medicine Publications. To order copies, contact us at P.O. Box 7612, New Haven, CT 06519-0612 or (203) 785-5824, or by e-mail at facts.med@yale.edu. On the web: facts.med.yale.edu. Data are as of 9/30/05 unless otherwise noted.



Brief chronology

1701 Yale College founded

1810 Medical Institution of Yale College chartered

1833 The State Hospital, precursor to the New Haven Hospital, opens

1839 M.D. student thesis requirement formalized

1857 First African American student graduates

1915 Department of Public Health established at Yale

1916 First female students admitted

1923 School of Nursing established

1945 The New Haven Hospital merges with Grace Hospital, becoming Grace-New Haven Community Hospital

1965 Medical school and hospital revise their affiliation, creating Yale-New Haven Hospital

1974 Yale Cancer Center established

1991 Boyer Center for Molecular Medicine completed

1993 Children's Hospital opens

2003 Anlyan Center completed

OVERVIEW AND HISTORY

The Yale University School of Medicine is one of the world's leading centers for biomedical research, advanced clinical care and medical education. It ranks seventh among medical schools receiving research funding from the National Institutes of Health. More than 700 Yale physicians provide care to patients from across the region and around the world. The Yale System of medical education, with its emphasis on critical thinking and independent inquiry, has produced leaders in every field of academic medicine.

The sixth-oldest medical school in the United States, the school was established by the Connecticut General Assembly in 1810 when it chartered the Medical Institution of Yale College, located first on Grove Street, then at 150 York Street. Since 1924, it has occupied Sterling Hall of Medicine at 333 Cedar Street and surrounding buildings. Since 1814, it has awarded 7,839 medical degrees. There are 4,913 living alumni with M.D. degrees, 3,557 with M.P.H. degrees and 847 alumni of the Physician Associate Program.



Research activity

1,940 awards totaling \$436.5 million

NIH awards \$298.5 million

NIH Center and Program grants 47

NIH rank among medical schools 7

Basic science and bridge departments 11

Active patents for Yale inventions 315

Yale-founded biotech companies, Greater New Haven 21

Research award data are for Yale's fiscal year ending 6/30/05; NIH ranking is for federal fiscal year ending 9/30/04.

Faculty profile

Teaching (ladder) 1,063

Research 492

Lecturer/Instructor 281

Subtotal 1,836

Visiting/Adjunct 76

Emeritus/Retired 131

Voluntary 1,828

Subtotal 2,035

Total 3,871

Postdoctoral fellows & associates 1,131

Memberships* National Academy of Sciences 63

Institute of Medicine 37

NIH study section members 43

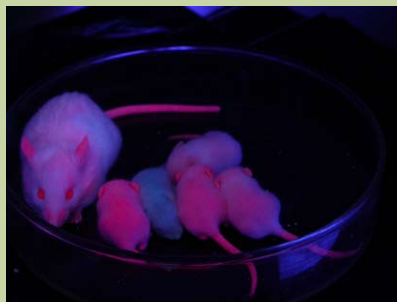
HHMI investigators 16

RESEARCH

Research at the medical school covers a broad spectrum, from fundamental studies in areas such as cell biology, genetics, immunobiology, microbial pathogenesis, neuroscience, physiology, biophysics and biochemistry to clinical studies aimed at improving the diagnosis and treatment of human diseases. Funding for research has almost doubled over the past decade, rising from \$226.2 million in 1995 to \$436.5 million in 2005.

State-of-the-art core resources at the School of Medicine provide access to the newest technologies in areas including:

- Genomics and proteomics, with more than 100 instrument systems for DNA and protein analyses, microarray studies, SNP genotyping and mass spectrometry
- Cell and molecular imaging, ranging from confocal, electron and cryoelectron microscopy to X-ray crystallography
- MR and PET imaging
- Construction and analysis of animal models of disease



**Data as of 12/31/05. Includes the Faculty of Arts and Sciences and the graduate and professional schools.*



Students by degree program

M.D.	396
Ph.D.	366
M.D./Ph.D.	85
M.P.H.	250
M.M.Sc.	62
M.D./J.D.	5
M.D./M.B.A.	7
M.D./M.P.H.	5
Total	1,176

M.D. program details

Class of 2009 profile	
Applicants	3,708
No. enrolled	100
Acceptance rate	5.9%
Average GPA	3.75
MCAT mean of sections	11.6

Male-to-female ratio 42 to 58

Faculty-to-student ratio 2.9 to 1

Tuition, 2005–2006 \$37,280

Average debt, 2005 graduates w/debt \$98,518

EDUCATION

The School of Medicine educates future leaders in medicine, public health and biomedical science enrolled in its M.D. and other degree programs (listed at left). The M.D. program follows a unique educational philosophy established in the 1920s by Dean Milton C. Winternitz, M.D., known as the Yale System of medical education. No course grades or class rankings are given in the first two years, examinations are limited and students are expected to engage in independent investigation. Every Yale medical student since 1839 has been required to write a thesis based on original research.

Each year, approximately 10 students enroll in the school's M.D./Ph.D. Program, one of the original Medical Scientist Training Programs established and funded by the NIH. Within the medical school, the Department of Epidemiology and Public Health operates as a fully accredited school of public health. Students in the Physician Associate Program earn the M.M.Sc. degree. Graduate students in the Combined Program for Biological and Biomedical Studies (BBS) earn a Ph.D. degree through the Faculty of Arts and Sciences.

Clinical overview

Revenues \$261 million

Clinical departments 16

Yale Medical Group

Office visits 245,910

YMG physicians

Full-time 701

Part-time 134

YMG midlevel practitioners (PA, RNP) 79

Medical residents 659

Clinical fellows 215

Clinical revenues and office visits are for the year ending 6/30/05.

Affiliated hospitals 12

Yale-New Haven Hospital

Patient discharges 48,595

Newborns 4,893

Emergency visits 108,852

Adult beds 670

Pediatric beds 95

Bassinets 92

Psychiatric beds 87

Total 944

CLINICAL CARE

More than 700 Yale physicians provide primary and specialty care for patients under the auspices of the Yale Medical Group, one of the largest academic multi-specialty practices in the nation. Yale doctors provide advanced care in more than 100 specialties and subspecialties, including organ transplantation, minimally invasive surgery and state-of-the-art cancer care. Yale's historical contributions to medicine include the first X-ray performed in the United States, the first successful use of penicillin in America, the first use of cancer chemotherapy, and the introduction of fetal heart monitoring, natural childbirth and newborn rooming-in. Yale doctors designed the first artificial heart pump and the first insulin infusion pump for diabetes, and it was here that the polio virus was isolated and its means of transmission established, paving the way for the Salk vaccine. Lyme disease was identified by two Yale physicians in 1975.

